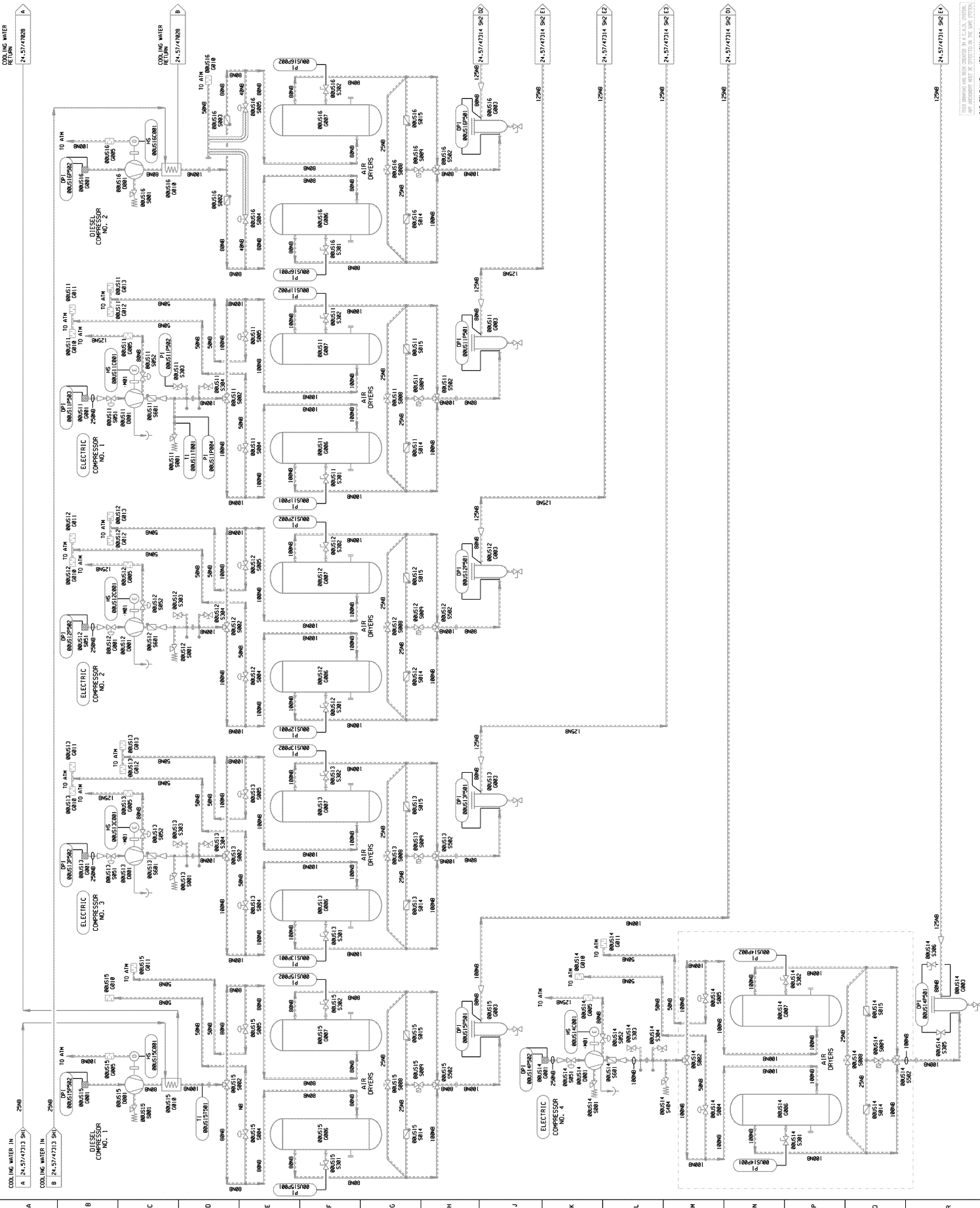


22
21
20
19
18
17
16
15
14
13
12
11
10
9
8
7
6
5
4
3
2
1



ORIGINAL P&ID (DCL, NO. 0.57/10088) SHEET 1

NO.	DATE	BY	CHKD.	APP.	REVISION
1					
2					
3					
4					
5					
6					
7					
8					
9					
10					
11					
12					
13					
14					
15					
16					
17					
18					
19					
20					
21					
22					

QUINVA POWER STATION,
CONTROL AND SERVICE AIR
COMPRESSORS & DRYERS

ESKOM
POWER CO. OF S.A.

24-57/47314

SHEET 1 OF 18

049 FILENAME: 47314P&ID.DWG