

A

B

C

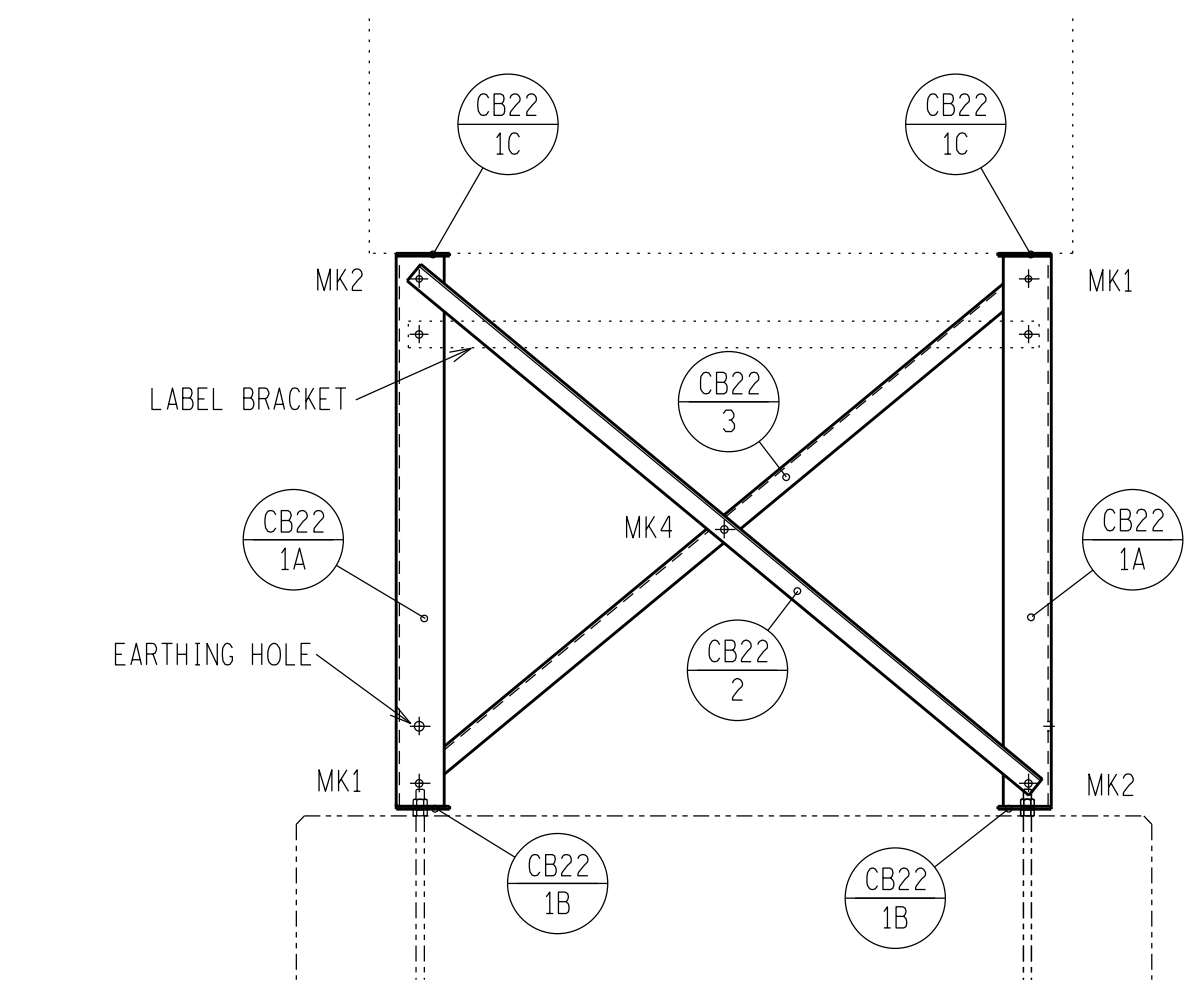
D

E

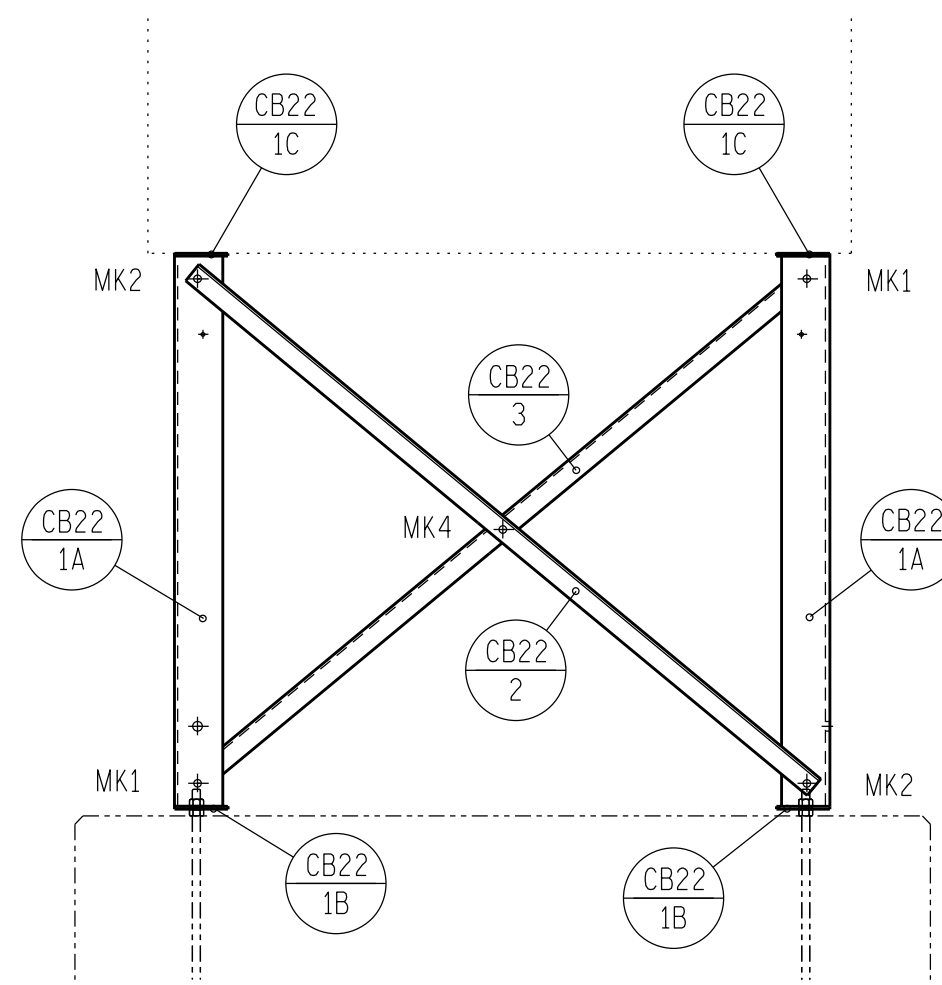
F

G

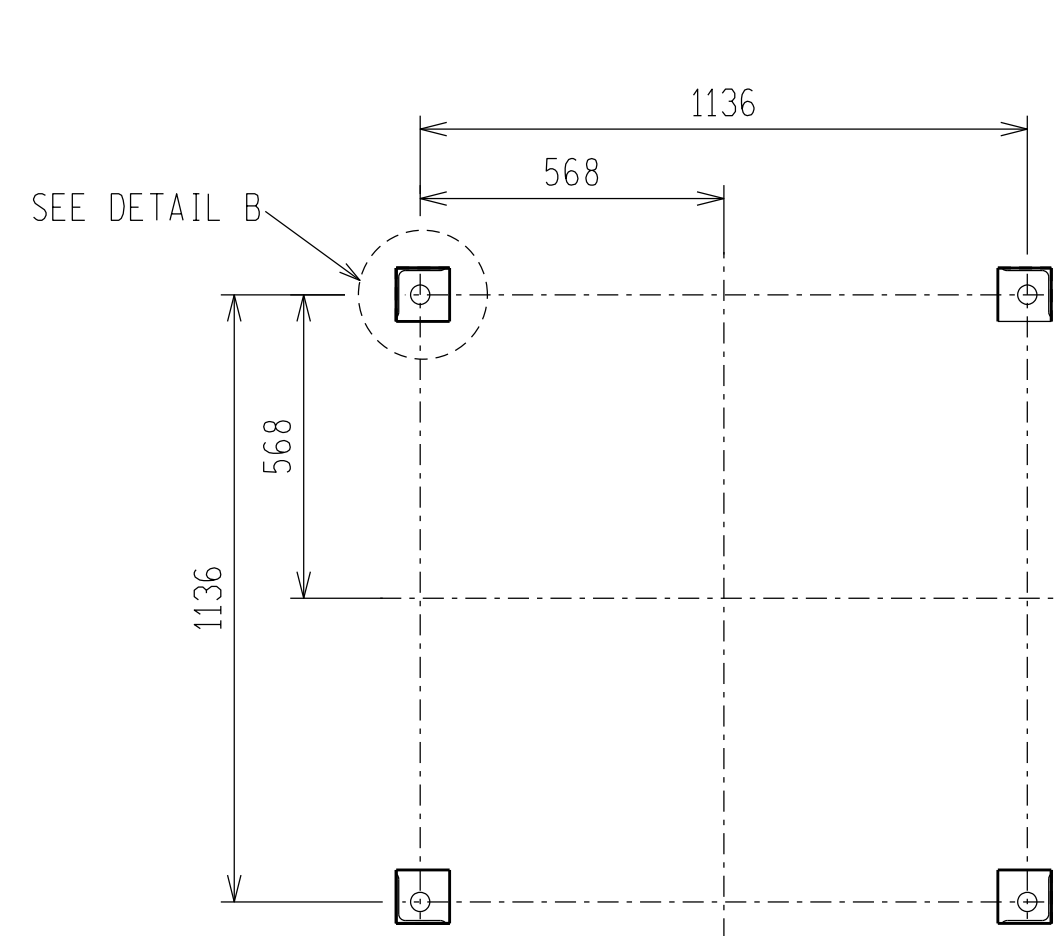
H



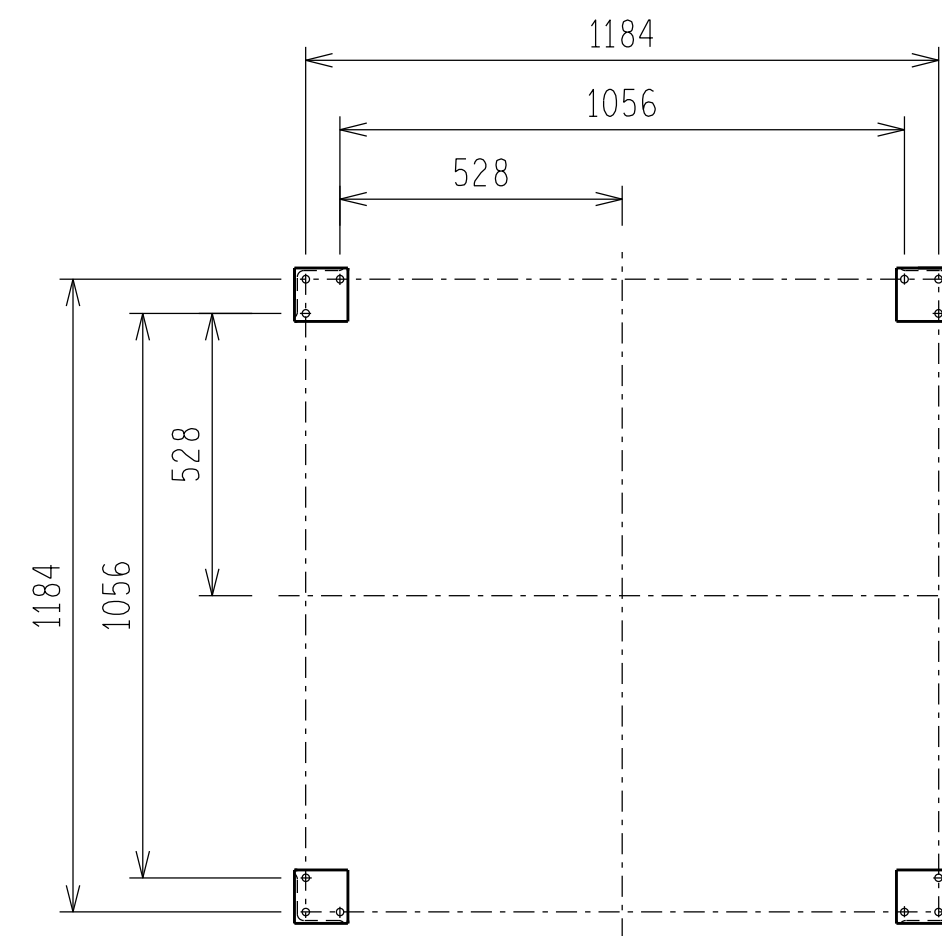
FRONT VIEW



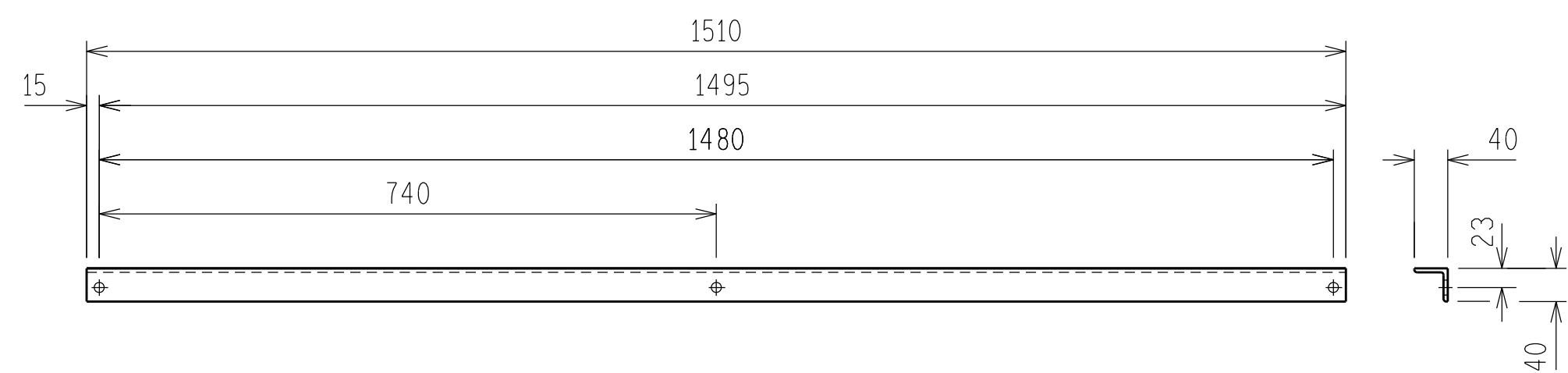
SIDE VIEW



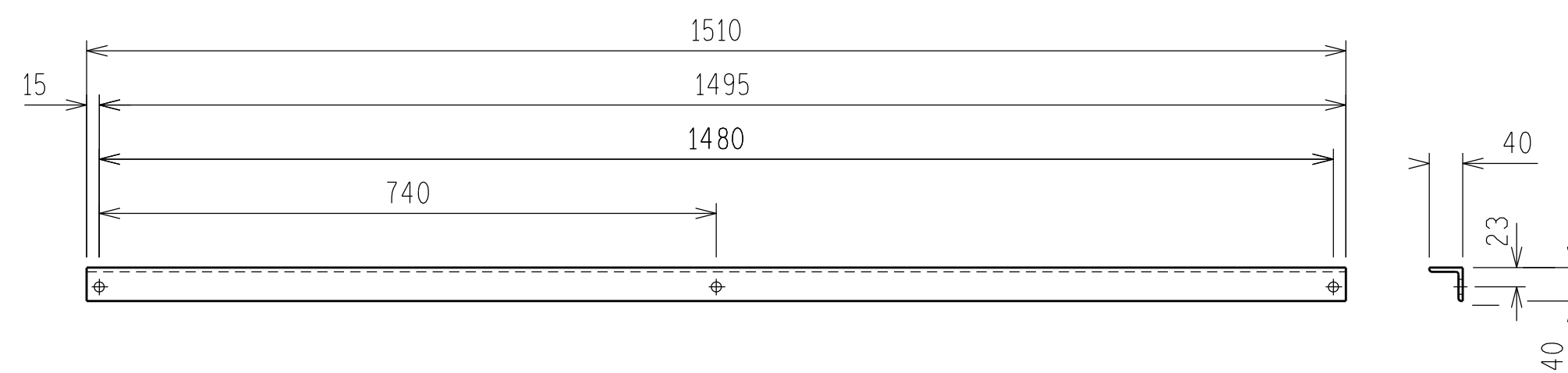
PLAN VIEW ON SUPPORT BASE



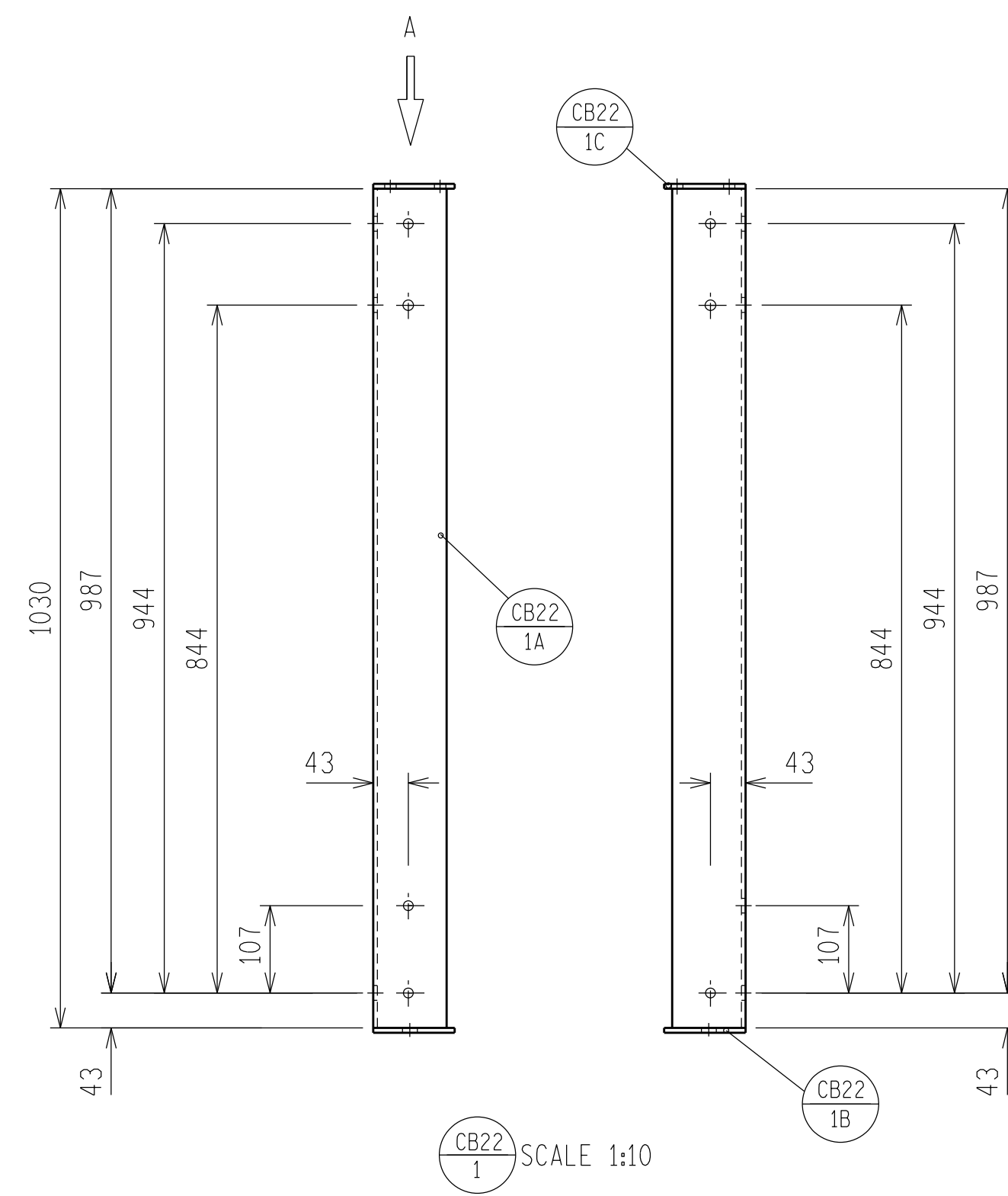
PLAN VIEW ON EQUIPMENT BASE



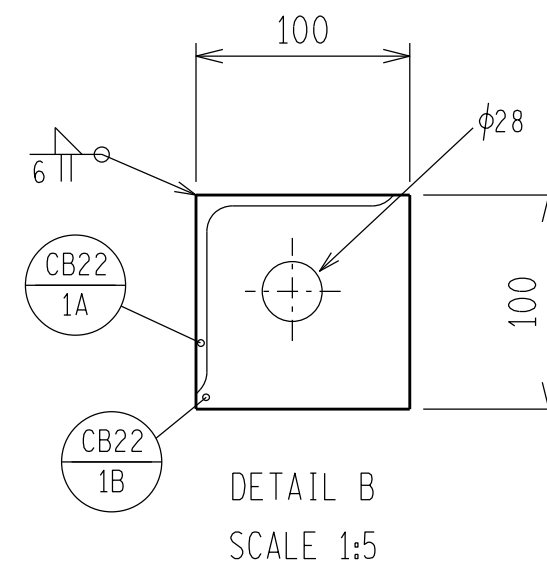
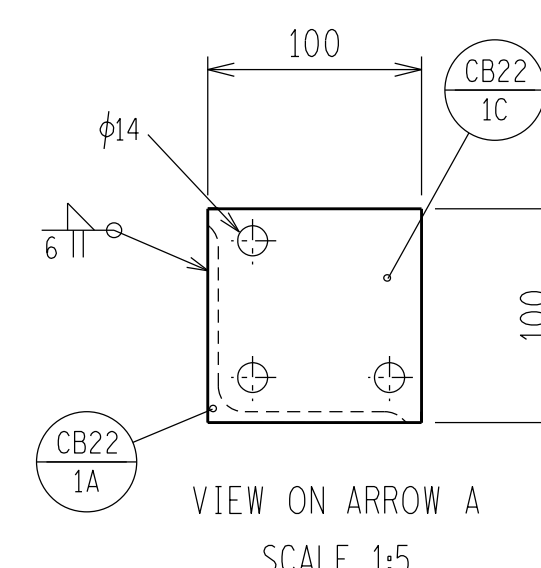
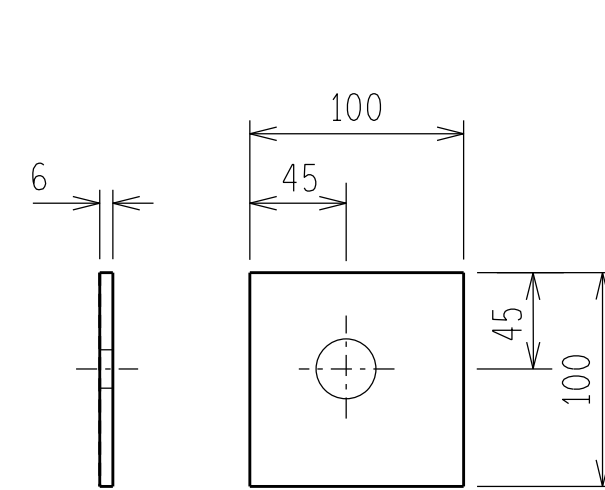
CB22 2 SCALE 1:10



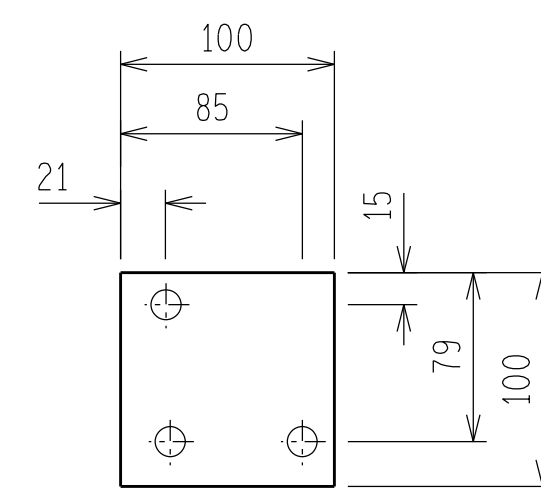
CB22 3 SCALE 1:10



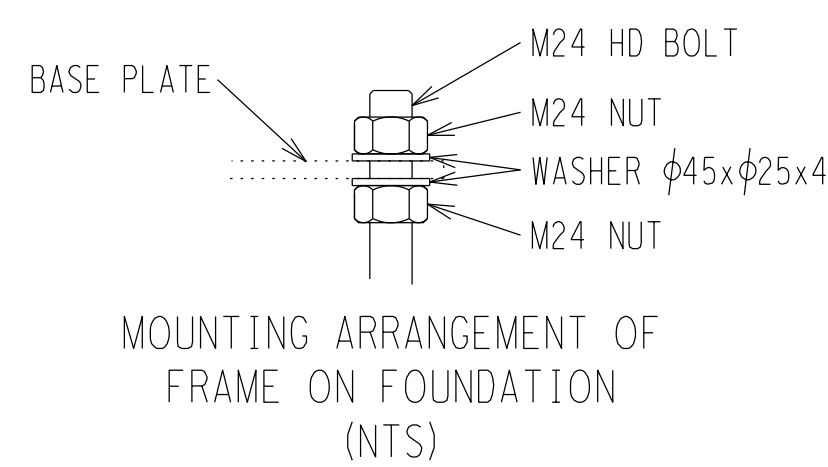
CB22 1 SCALE 1:10

DETAIL B
SCALE 1:5VIEW ON ARROW A
SCALE 1:5

CB22 1B SCALE 1:5



CB22 1C SCALE 1:5

MOUNTING ARRANGEMENT OF
FRAME ON FOUNDATION
(NTS)


NOTES:

1. ALL WELDING AND WELDING SYMBOLS SHALL CONFORM TO SANS 10044 PART 1 TO 5.
2. ALL STRUCTURAL USE OF STEEL TO CONFORM TO SANS 10162.
3. ALL STEEL TO BE GRADE S355JR/350WA (EXCEPT ANGLES $\leq 45\text{mm}$ TO BE MILD STEEL).
4. ALL WELDS TO BE SEALED WELDED.
5. STEELWORK TO BE HOT DIP GALVANIZED TO SANS 121.
6. STEELWORK TO BE CHECKED AND STRAIGHTENED AFTER GALVANIZING.
7. BOLTS, NUTS & WASHERS TO BE IN ACCORDANCE WITH SANS 1700.
8. ALL MARKINGS TO BE STAMPED ONTO STEELWORK AND SHALL BE CLEARLY LEGIBLE AFTER GALVANIZING.
9. NO STEEL EXTENSIONS WILL BE ALLOWED ON ANY STEELWORK.
10. ALL STEELWORK TO BE FABRICATED, ERECTED AND LEVELLED TO A TOLERANCE OF $\pm 1.5\text{mm}$.
11. ALL HOLES TO BE 12mm DIA UNLESS OTHERWISE STATED.

BOLT SCHEDULE									
MARK	BOLT SIZE mm	MILD STEEL GRADE	PITCH mm	LENGTH mm	NO OFF BOLTS	NO OFF NUTS	NO OFF WASHERS	TORQUE Nm	TOTAL MASS KG
1	M10	4.8	2	35	14	14	14	120	2.13
2	M10	4.8	2	40	2	2	6	120	0.34
3	M10	4.8	2	40	3	3	12	120	0.54
4	M10	4.8	2	40	1	1	6	120	0.20
MASS OF BOLTS, WASHERS AND NUTS									3.21

STEEL SCHEDULE AND MASS					
ITEM	QTY	DESCRIPTION	CUTTING LENGTH (mm)	TOTAL LENGTH (m)	TOTAL MASS (kg)
CB22 1A	4	MILD STEEL ANGLE 90 x 90 x 6	1030	4.12	34.12
CB22 1B	4	MILD STEEL FLAT BAR 100 x 6	100	0.40	1.89
CB22 1C	4	MILD STEEL FLAT BAR 100 x 6	100	0.40	1.89
CB22 2	4	MILD STEEL ANGLE 40 x 40 x 5	1510	6.04	17.82
CB22 3	4	MILD STEEL ANGLE 40 x 40 x 5	1510	6.04	17.82
TOTAL MASS =					72.90

D-DT-5216	SHEET 1B	CIRCUIT BREAKER 22kV FOUND.
DRG NO.	SHEET NO.	REFERENCE DRAWINGS

THIS DRAWING IS THE NEW OFFICIAL REVISION AND IT SUPERSEDES ALL OTHER PUBLISHED DRAWINGS							
0	FIRST ISSUE						
REV	REVISION DESCRIPTION		BY	CHKD	AUTH	DATE	
			CIRCUIT BREAKER KIOSK - 22kV LATTICE STEEL STEELWORK MANUFACTURING DETAILS AND ASSEMBLY				
AUTH: N WEBBER							
DATE: 01/09/2017							
CHKD: HJS ROUX							
DATE: 31/08/2017							
DRAWN: NS HLOMENDLINI							
DATE: 31/08/2017			D-DT-5216		SET	SHEET	REVISION
					2B	0	

A

B

C

D

E

F

G

H