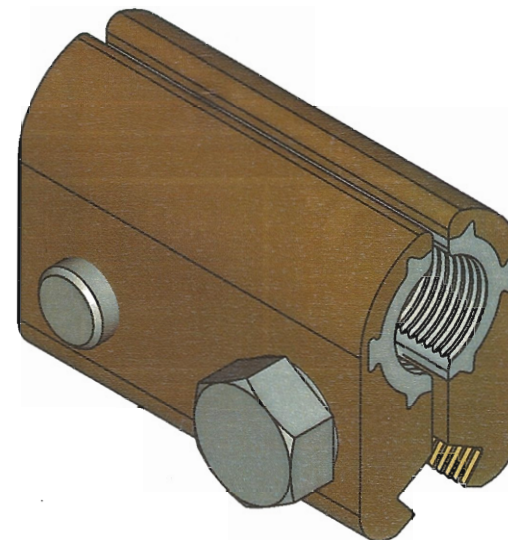
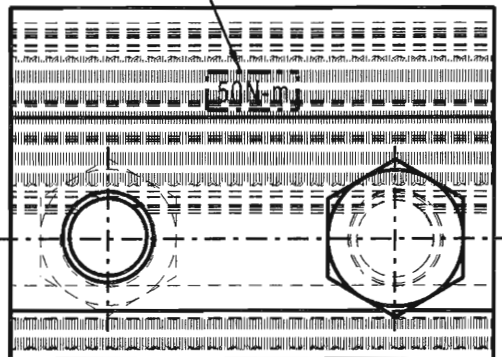
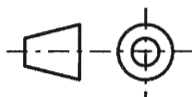


Torque value to be stencilled here  
50N-m



#### Note

1. Bi-metal feeder clamp to specification CEE-0063
2. The following permanent markings must appear on this article.
  - a) Transnet Logo.
  - b) Manufacturers identification.
  - c) Dated batch number.
  - d) Wire size.
  - e) Torque value.



© COPYRIGHT PROTECTED. PREPARED BY CENTRAL DRAWING OFFICE

ITEM NO	DESCRIPTION	QTY	STORES ITEM NO	DRAWING NO
3	Lock washer, Internally toothed, Stainless steel to Spec. AISI GR 304, M12	2	-	-
2	Machine screw, Stainless steel to spec. AISI GR 304, Hex head, M12 x 35 long	2	-	-
1	Feeder half clamp	2	-	BBG6147 Sht. 1

DIMENSIONS : mm SCALE : 1 : 1  
 TOLERANCE : LIN - ANG - ITEM NO: 54000401  
 MATERIAL : -  
 VERSION INFO : Notes and slots added.

+ 14/03/2019

*[Signature]*

APPROVED: S Smit

+ 14-3-2019

*[Signature]*

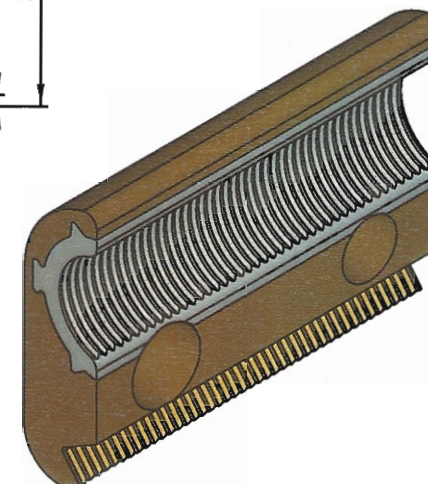
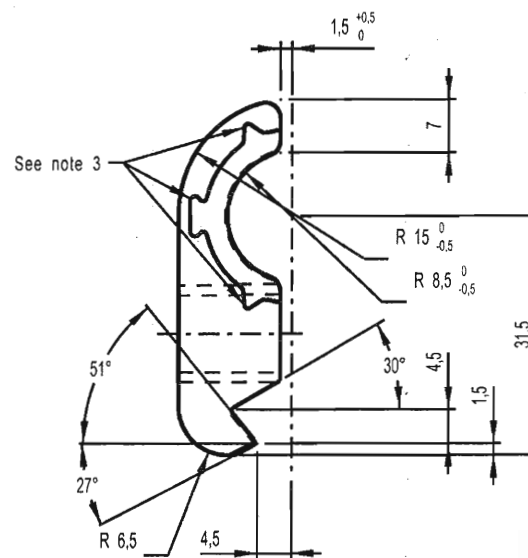
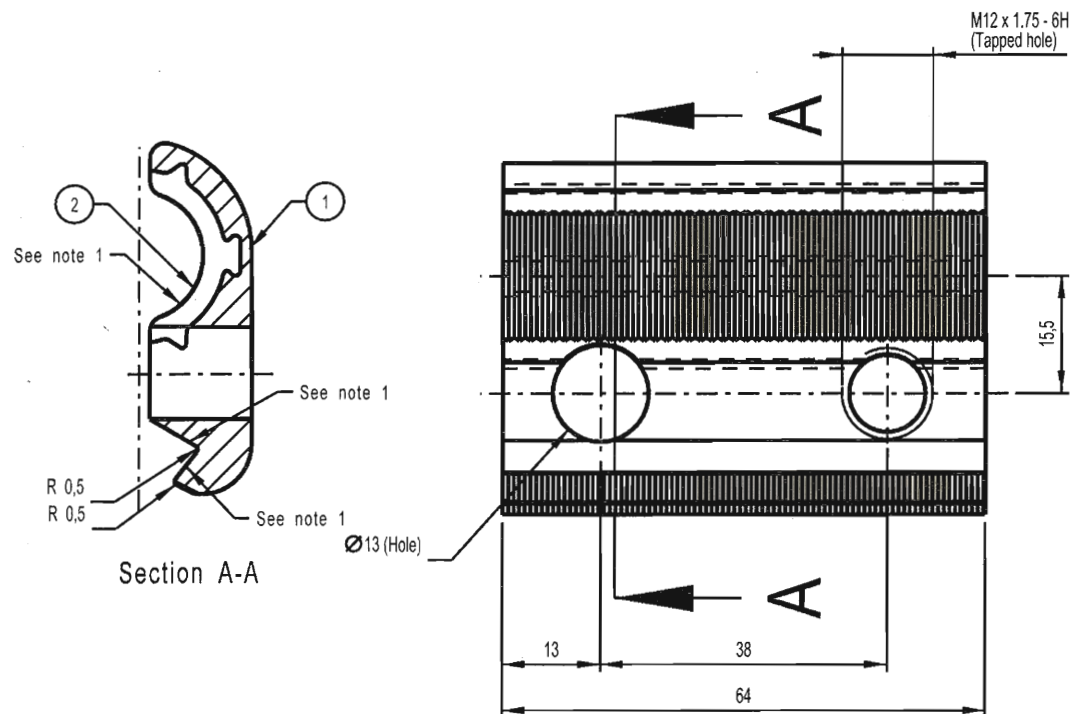
AUTHORISED: L O Borchard

BI-METAL FEEDER CLAMP FOR  
 160mm<sup>2</sup> Al / 161mm<sup>2</sup> Cu  
 CONTACT WIRE

**TRANSNET**  
 freight rail

BBG6147  
 VERSION 5

A4



Notes:

1. These surfaces to be serated: 1.5 pitch x 0.3 deep.
2. All unspecified radii R2.
3. Slots in Cu-Ni-Si half clamp to prevent forcable removal of Aluminium liner after forging

2	Permanently Forged Aluminium Grade 6063 insert, 3mm thick	1	-	-
1	CU-Ni-Si Alloy to Spec. CEE-0063	1	-	-
ITEM NO	DESCRIPTION	QTY	STORES ITEM NO	DRAWING NO

DIMENSIONS : mm SCALE : 1 : 1  
TOLERANCE : LIN  $\pm 0.5$  ANG  $\pm 0^\circ 30'$   
MATERIAL :  
VERSION : Notes and slots added.  
INFO :

DRAWN : D Hattingh

CHECKED : D Hattingh

BI-METAL FEEDER HALF CLAMP FOR  
160mm<sup>2</sup> Al. / 161mm<sup>2</sup> Cu.  
CONTACT WIRE

**TRANSNER**  
freight rail

BBG6147

Sht 1

VERSION 5

A4