



## Request for Quotations for the General Maintenance Work at King Phalo Airport.

**Airport** : King Phalo Airport.

**Tender Number:** : RFQ 11579

**Issue Date** : 10 June 2022

**Closing Date** : 17 June 2022 at 16:00

**Briefing Session** : 14 June 2022 at 12h00 midday

Issue: 1

Issue Date: 28/02/2014

Page 1

Tel +27 11 723 1400 Fax +27 11 453 9354  
The Maples, Riverwoods, 24 Johnson Road, Bedfordview, Gauteng, South Africa, 2008  
P O Box 75480, Gardenvue, Gauteng, South Africa, 2047  
[www.airports.co.za](http://www.airports.co.za)

Airports Company South Africa SOC Ltd Reg No 1993/004149/30 VAT no 4930138393



## SECTION 1: INSTRUCTIONS TO BIDDERS

1.1. The documents must be signed and completed by a person who has been given authority to act on behalf of the bidder. The bottom of each page of the bid documents must be signed or stamped with the bidder's stamp as proof that the bidder has read the tender documents. Bid documents must be submitted on or before 17 June 2022 at 16:00 using the following method:

1.1.1. Email submissions:

The bid documents must be sent to the following email address below:

[Matebogo.Mkhize@airports.co.za](mailto:Matebogo.Mkhize@airports.co.za)

The email subject for submission must **only** and **strictly** be: **RFQ 11579**

### **Disclaimer:**

ACSA will not be held liable for possibly disqualification resulting from bidder administrative errors.

Bidders are encouraged to read and comply with the terms of bid stated in this document.

1.1.2. Proposals must be in an electronic copy of the bid documents. The original copy will be the legal and binding copy, in the event of discrepancies between any of the submitted documents; the original copy will take precedence

## 1.2. Alternative Bids

As a general rule, ACSA only accepts bids which have been prepared in response to the tender invitation. However, for this tender alternative bids will be accepted provided the alternative bid is accompanied by the original bid response which materially complies with the specifications of this tender invitation. The alternative bid will only be considered where the bidder has submitted together with its alternative bid, an offer which materially complies with the requirements of this tender. Alternative bids will also be evaluated using the pre-determined evaluation criteria stipulated in this tender document.

Issue: 1

Issue Date: 28/02/2014

Page 2

Tel +27 11 723 1400 Fax +27 11 453 9354

The Maples, Riverwoods, 24 Johnson Road, Bedfordview, Gauteng, South Africa, 2008

P O Box 75480, Gardenvue, Gauteng, South Africa, 2047

[www.airports.co.za](http://www.airports.co.za)



#### 1.4 Late Bids

Bids which are submitted after the closing date and time will not be accepted.

#### 1.5 Clarification and Communication

Name:	Matebogo Mkhize
Designation:	Buyer
Tel:	011 723 2643
Email:	Matebogo.Mkhize@airports.co.za

Request for clarity or information on the tender may only be requested **until** 16h00 pm on 14 June 2022. Any responses to queries for clarity sought by any bidder on the briefing session will be attached as an Addendum on the tender advert on the e-tenders portal, by 16h00 pm, on 15 June 2022.

**Bidders may not contact any ACSA employee on this tender other than those listed above.** Contact will only be allowed between the successful bidder and ACSA Business Unit representatives after the approval of a recommendation to award this tender. Contact will also only be permissible in the case of pre-existing commercial relations which do not pertain to the subject of this tender.

#### 1.6 Compulsory Briefing Session-

There will a compulsory briefing session on:

Date: 14 June 2022

Time 12h00 midday

Venue: King Phalo Airport, Information Desk Arrivals

Issue: 1

Issue Date: 28/02/2014

Page 3

Tel +27 11 723 1400 Fax +27 11 453 9354

The Maples, Riverwoods, 24 Johnson Road, Bedfordview, Gauteng, South Africa, 2008

P O Box 75480, Gardenvue, Gauteng, South Africa, 2047

[www.airports.co.za](http://www.airports.co.za)



**N.B. The area for viewing is an access controlled area that requires permits with the value of R30.00, bidders are required to present ID documents at the permit office to issue the permit.**

### **1.7 Bid Responses**

Bid responses must be strictly prepared and returned in accordance with this tender document. Bidders may be disqualified where they have not materially complied with any of ACSA's requirements in terms of this tender document. Changes to the bidder's submission will not be allowed after the closing date of the tender. All bid responses will be regarded as offers unless the bidder indicates otherwise. No bidder or any of its consortium/joint venture members may have an interest in any of the other bidder/joint venture/consortium participating in this bid.

### **1.8 Disclaimers**

- a) It must be noted that ACSA may:
- b) Award the whole or a part of this tender;
- c) Split the award of this tender;
- d) Negotiate with all or some of the shortlisted bidders;
- e) Award the tender to a bidder other than the highest scoring bidder where objective criteria allow; and/or
- f) Cancel this tender.

### **1.9 Validity Period**

ACSA requires a validity period of a hundred and twenty (120) business/working days for this tender. During the validity period the prices which have been quoted by the bidder must remain firm and valid. It is only in exceptional circumstances where ACSA would accommodate a proposal to change the price.

Issue: 1

Issue Date: 28/02/2014

Page 4

**Tel +27 11 723 1400 Fax +27 11 453 9354**  
**The Maples, Riverwoods, 24 Johnson Road, Bedfordview, Gauteng, South Africa, 2008**  
**P O Box 75480, Gardenvue, Gauteng, South Africa, 2047**  
**[www.airports.co.za](http://www.airports.co.za)**



### 1.10 Confidentiality of Information

ACSA will not disclose any information disclosed to ACSA through this tender process to a third party or any other bidder without any written approval from the bidder whose information is sought. Furthermore, ACSA will not disclose the names of bidders until the tender process has been finalised.

Bidders may not disclose any information given to the bidders as part of this tender process to any third party without the written approval from ACSA. In the event that the bidder requires to consult with third parties on the tender, such third parties must complete confidentiality agreements, which should also be returned to ACSA with the bid.

### 1.11 Hot – Line

ACSA subscribes to fair and just administrative processes. ACSA therefore urges its clients, suppliers and the general public to report any fraud or corruption to:

Airports Company South Africa TIP-OFFS ANONYMOUS

Free Call: 0800 00 80 80

Free Fax: 0800 00 77 88

Email: [acsa@tip-offs.com](mailto:acsa@tip-offs.com)

Issue: 1

Issue Date: 28/02/2014

Page 5

Tel +27 11 723 1400 Fax +27 11 453 9354

The Maples, Riverwoods, 24 Johnson Road, Bedfordview, Gauteng, South Africa, 2008

P O Box 75480, Gardenvue, Gauteng, South Africa, 2047

[www.airports.co.za](http://www.airports.co.za)



## SECTION 2: BACKGROUND, PURPOSE AND SCOPE OF WORK

Airports Company South Africa hereby invites general maintenance service providers to submit quotes for the supply and installation of aerators on all ablution taps and to supply and install water meters in all ablutions per the below scope of works.

### Specifications:

All supplied parts to be SABS approved

### The successful bidder shall:

Ensure that all activities (installation + equipment & spares) are completed according to the applicable **legislation** and **standards** and acceptable quality of the Airports Company SA – which is detailed, but not limited to, the list below:

- Occupational Health & Safety (OHS) Act (act 85 of 1993)
- SABS approved product.

Note that the maximum allowances to be made provision for, is indicated in the fields below. However, only actual quantities will be invoiced for. Should you feel based on expertise and experience that the listed allowance is not adequate – please indicate so on the quotation. This implies that all prices must be indicated per applicable unit, i.e.

- Labor = Each (per activity completed in full according to applicable published standards)
- Material / Spares = per standard length; or per meter; or per square meter

Bidders are required to use the below pricing schedule for their price offer.

**Table: 2.1 Pricing schedule**

ITEM No	DESCRIPTION	QUANTITY	TENDERED RATE	AMOUNT
1	<b><u>Famous Brands Male ablution</u></b> Install water meter in ceiling void (¾ inch hard drawn copper) after water shut off and one valve above disabled toilet – Appendix A	1	R	R
2	Install aerators on Taps in male ablutions – Appendix B	1	R	R
3	<b><u>Famous Brands ablution</u></b>	4	R	R

Issue: 1

Issue Date: 28/02/2014

Page 6

Tel +27 11 723 1400 Fax +27 11 453 9354

The Maples, Riverwoods, 24 Johnson Road, Bedfordview, Gauteng, South Africa, 2008

P O Box 75480, Gardenvue, Gauteng, South Africa, 2047

[www.airports.co.za](http://www.airports.co.za)

	Install water meter in ceiling void in corner above basins (¾ inch hard drawn copper) at water shut off valve – Appendix B			
4	<b><u>Famous Brands abluition</u></b> Install aerators on Taps in female ablutions– Appendix B	4	R	R
5	<b><u>ACSA ADMIN 1<sup>st</sup> Floor Kitchen</u></b> Install water meter (1/2-inch plastic) at water shut off valve on outside wall – Appendix C	1	R	R
6	<b><u>ACSA ADMIN 1<sup>st</sup> Floor Kitchen</u></b> Install aerator into Cobra Single Flow Type Kitchen Sink Mixer Tap – Appendix D	1	R	R
7	<b><u>ACSA ADMIN 1st Floor Male and Female Ablutions</u></b> Install water meter and shut off valve (1/2-inch plastic) on supply water line to ACSA Admin ablutions - Appendix E	2	R	R
8	<b><u>ACSA ADMIN 1st Floor Male and Female Ablutions</u></b> Install aerators into Cobra - Stella Bright type Pillar Taps – Appendix F	4	R	R
9	<b><u>ACSA ADMIN 1st Floor Male and Female Ablutions</u></b> Install aerators into Cobra medical type tap – Appendix G	2	R	R
10	<b><u>Departure out Gr floor Ablutions</u></b> Install water meter after one valve in ceiling void above disabled door in 40mm hard drawn copper pipe – Appendix H	1	R	R
11	<b><u>Departure out Gr floor Ablutions</u></b> Install aerators into unknown brand of waterspouts in male and female ablutions – Appendix I	7	R	R
12	<b><u>Departure out Gr floor Disabled Ablutions</u></b> Install aerator in medical tap – Appendix G	1	R	R
13	<b><u>East Wing Ablutions</u></b> Install water meter after water shut off valve (hard drawn copper 40mm pipe, in ally ground floor behind departure in ablutions. – Appendix J	1	R	R
14	<b><u>East Wing Ablutions male and female</u></b> Install aerators into Cobra basin type mixer – Appendix K	4	R	R
15	<b><u>East Wing Ablutions male and female</u></b> Install aerators into kitchen mixer – Appendix L	1	R	R
16	<b><u>Departure In Ablutions Gr Floor</u></b> Install water shut off valve in 40mm supply water pipe to departure in ablutions, Bidvest lounge, and East wing ablutions - Appendix M	1	R	R
17	<b><u>Departure In Ablutions (ladies) Gr Floor</u></b> Install water meter and shut off valve in ceiling void, 40mm hard drawn copper (pipe in void above toilet # 2 from the back) – Appendix N	2	R	R
18	<b><u>Departure In Ablutions (men) Gr Floor</u></b> Install water meter in ceiling void above basins after shut-off and one way valve 22mm hard drawn copper pipe – Appendix O	1	R	R
19	<b><u>Departure In Ablutions (disabled) Gr Floor</u></b> Install aerators in medical tap in disabled toilet – Appendix G	1	R	R
20	<b><u>Arrivals In Ablutions Gr Floor</u></b> Install water meter in ceiling void on 40mm hard drawn copper pipe after shut -off and one way valve – Appendix P	1	R	R

Issue: 1

Issue Date: 28/02/2014

Page 7

Tel +27 11 723 1400 Fax +27 11 453 9354

The Maples, Riverwoods, 24 Johnson Road, Bedfordview, Gauteng, South Africa, 2008

P O Box 75480, Gardenvue, Gauteng, South Africa, 2047

www.airports.co.za

21	<b><u>Arrivals Out Ablution Gr Floor</u></b> Install water meter in ceiling void on 40mm hard drawn copper pipe after shut-off and one way valve – Appendix Q	1	R	R
22	<b><u>Arrivals out male ablutions</u></b> Install aerators into Eurostyle Cosmopolitan Chrome Pillar Type Tap taps	3	R	R
23	<b><u>Arrivals In male and female ablutions</u></b> Install aerators into unknown brand of waterspouts in male and female ablutions – Appendix I	7	R	R
24	<b><u>Arrivals In and out disabled Ablutions</u></b> Install aerators in medical tap in disabled toilet – Appendix G	2	R	R
26	<b><u>Ramp Handling Building male ablutions</u></b> Install aerators in taps – Appendix R	2	R	R
27	<b><u>Ramp Handling Building male ablutions</u></b> Install aerators in taps – Appendix S	4	R	R
28	<b><u>Ramp Handling Building female ablutions</u></b> Install aerators in taps – Appendix S	6	R	R
29	<b><u>Car rental Ablutions</u></b> Install water meter after shut-off valve on 22 mm hard drawn copper pipe – Appendix T	1	R	R
30	<b><u>Car Rental Male ablutions</u></b> Install aerators in taps – Appendix U	2	R	R
31	<b><u>Car Rental Female ablutions</u></b> Install aerators in medical tap – Appendix G	1	R	R
32	<b><u>Fire Station Ablutions</u></b> Install water meter after main water shut off valve– Appendix V	1	R	R
33	<b><u>Fire Station Male Ablutions Gr and 1<sup>st</sup> Fl</u></b> Install aerators into basin mixer type tap – Appendix W	3	R	R
34	<b><u>Fire Station Female Ablutions Gr and 1<sup>st</sup> Fl</u></b> Install aerators into basin mixer type tap – Appendix W	3	R	R
35	<b><u>Main Electrical Complex Ablutions</u></b> Install aerators into single basin taps – Appendix X	4	R	R
36	<b><u>Main Electrical Complex kitchens</u></b> Install aerators into single basin taps – Appendix Y	2	R	R
37	<b><u>Main Electrical Complex Rest room</u></b> Install aerators into single sink taps – Appendix Z	1	R	R
38	<b><u>Main Gate Ablutions</u></b> Install water meter and replace shut off valve with new – Appendix AA	2	R	R
39	<b><u>Main gate Male and Female ablutions</u></b> Install aerators in single basin type taps – Appendix AB	2	R	R
40	Supply Cobra FJ6000 metered complete urinal push button fitting	2	R	R
	<b><u>Famous brands Male Urinal</u></b> Install Cobra FJ6000 metered complete urinal push button fitting at Famous brands men's urinal	1	R	R

Issue: 1

Issue Date: 28/02/2014

Page 8

Tel +27 11 723 1400 Fax +27 11 453 9354

The Maples, Riverwoods, 24 Johnson Road, Bedfordview, Gauteng, South Africa, 2008

P O Box 75480, Gardenvue, Gauteng, South Africa, 2047

www.airports.co.za



41	<b><u>Arrivals In kitchen</u></b> Install aerators in kitchen sink mixer – Appendix AC	1	R	R
<b>SUB-TOTAL</b>				R
<b>VAT @ 15 %</b>				R
<b>TOTAL</b>				R

## **Appendix A**



Issue: 1

Issue Date: 28/02/2014

Page 9

Tel +27 11 723 1400 Fax +27 11 453 9354

The Maples, Riverwoods, 24 Johnson Road, Bedfordview, Gauteng, South Africa, 2008

P O Box 75480, Gardenvue, Gauteng, South Africa, 2047

[www.airports.co.za](http://www.airports.co.za)

Airports Company South Africa SOC Ltd Reg No 1993/004149/30 VAT no 4930138393

## **Appendix B**



## **Appendix C**

Issue: 1

Issue Date: 28/02/2014

Page 10

Tel +27 11 723 1400 Fax +27 11 453 9354

The Maples, Riverwoods, 24 Johnson Road, Bedfordview, Gauteng, South Africa, 2008

P O Box 75480, Gardenvue, Gauteng, South Africa, 2047

[www.airports.co.za](http://www.airports.co.za)

Airports Company South Africa SOC Ltd Reg No 1993/004149/30 VAT no 4930138393



## **Appendix D**

Issue: 1

Issue Date: 28/02/2014

Page 11

Tel +27 11 723 1400 Fax +27 11 453 9354

The Maples, Riverwoods, 24 Johnson Road, Bedfordview, Gauteng, South Africa, 2008

P O Box 75480, Gardenvue, Gauteng, South Africa, 2047

[www.airports.co.za](http://www.airports.co.za)

Airports Company South Africa SOC Ltd Reg No 1993/004149/30 VAT no 4930138393



## **Appendix E**



Issue: 1

Issue Date: 28/02/2014

Page 12

Tel +27 11 723 1400 Fax +27 11 453 9354

The Maples, Riverwoods, 24 Johnson Road, Bedfordview, Gauteng, South Africa, 2008

P O Box 75480, Gardenvue, Gauteng, South Africa, 2047

[www.airports.co.za](http://www.airports.co.za)

Airports Company South Africa SOC Ltd Reg No 1993/004149/30 VAT no 4930138393

## **Appendix F**



## **Appendix G**



Issue: 1

Issue Date: 28/02/2014

Page 13

Tel +27 11 723 1400 Fax +27 11 453 9354

The Maples, Riverwoods, 24 Johnson Road, Bedfordview, Gauteng, South Africa, 2008

P O Box 75480, Gardenvue, Gauteng, South Africa, 2047

[www.airports.co.za](http://www.airports.co.za)

Airports Company South Africa SOC Ltd Reg No 1993/004149/30 VAT no 4930138393

## **Appendix H**



## **Appendix I**

Issue: 1

Issue Date: 28/02/2014

Page 14

Tel +27 11 723 1400 Fax +27 11 453 9354

The Maples, Riverwoods, 24 Johnson Road, Bedfordview, Gauteng, South Africa, 2008

P O Box 75480, Gardenview, Gauteng, South Africa, 2047

[www.airports.co.za](http://www.airports.co.za)

Airports Company South Africa SOC Ltd Reg No 1993/004149/30 VAT no 4930138393



## **Appendix J**

Issue: 1

Issue Date: 28/02/2014

Page 15

Tel +27 11 723 1400 Fax +27 11 453 9354

The Maples, Riverwoods, 24 Johnson Road, Bedfordview, Gauteng, South Africa, 2008

P O Box 75480, Gardenvue, Gauteng, South Africa, 2047

[www.airports.co.za](http://www.airports.co.za)

Airports Company South Africa SOC Ltd Reg No 1993/004149/30 VAT no 4930138393





## **Appendix K**



Issue: 1

Issue Date: 28/02/2014

Page 16

Tel +27 11 723 1400 Fax +27 11 453 9354

The Maples, Riverwoods, 24 Johnson Road, Bedfordview, Gauteng, South Africa, 2008

P O Box 75480, Gardenvue, Gauteng, South Africa, 2047

[www.airports.co.za](http://www.airports.co.za)

Airports Company South Africa SOC Ltd Reg No 1993/004149/30 VAT no 4930138393



## **Appendix L**



## **Appendix M**

Issue: 1

Issue Date: 28/02/2014

Page 17

Tel +27 11 723 1400 Fax +27 11 453 9354

The Maples, Riverwoods, 24 Johnson Road, Bedfordview, Gauteng, South Africa, 2008

P O Box 75480, Gardenvue, Gauteng, South Africa, 2047

[www.airports.co.za](http://www.airports.co.za)

Airports Company South Africa SOC Ltd Reg No 1993/004149/30 VAT no 4930138393



## **Appendix N**

Issue: 1

Issue Date: 28/02/2014

Page 18

Tel +27 11 723 1400 Fax +27 11 453 9354  
The Maples, Riverwoods, 24 Johnson Road, Bedfordview, Gauteng, South Africa, 2008  
P O Box 75480, Gardenvue, Gauteng, South Africa, 2047  
[www.airports.co.za](http://www.airports.co.za)

Airports Company South Africa SOC Ltd Reg No 1993/004149/30 VAT no 4930138393



## **Appendix O**



Issue: 1

Issue Date: 28/02/2014

Page 19

Tel +27 11 723 1400 Fax +27 11 453 9354

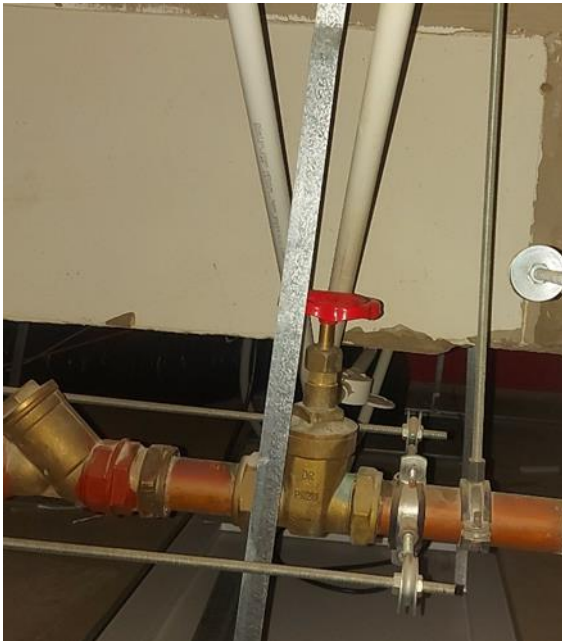
The Maples, Riverwoods, 24 Johnson Road, Bedfordview, Gauteng, South Africa, 2008

P O Box 75480, Gardenvue, Gauteng, South Africa, 2047

[www.airports.co.za](http://www.airports.co.za)

Airports Company South Africa SOC Ltd Reg No 1993/004149/30 VAT no 4930138393

## **Appendix P**



## **Appendix Q**

Issue: 1

Issue Date: 28/02/2014

Page 20

Tel +27 11 723 1400 Fax +27 11 453 9354  
The Maples, Riverwoods, 24 Johnson Road, Bedfordview, Gauteng, South Africa, 2008  
P O Box 75480, Gardenvue, Gauteng, South Africa, 2047  
[www.airports.co.za](http://www.airports.co.za)

Airports Company South Africa SOC Ltd Reg No 1993/004149/30 VAT no 4930138393



## **Appendix R**



Issue: 1

Issue Date: 28/02/2014

Page 21

Tel +27 11 723 1400 Fax +27 11 453 9354

The Maples, Riverwoods, 24 Johnson Road, Bedfordview, Gauteng, South Africa, 2008

P O Box 75480, Gardenview, Gauteng, South Africa, 2047

[www.airports.co.za](http://www.airports.co.za)

Airports Company South Africa SOC Ltd Reg No 1993/004149/30 VAT no 4930138393

## **Appendix S**



## **Appendix T**

Issue: 1

Issue Date: 28/02/2014

Page 22

Tel +27 11 723 1400 Fax +27 11 453 9354

The Maples, Riverwoods, 24 Johnson Road, Bedfordview, Gauteng, South Africa, 2008

P O Box 75480, Gardenvue, Gauteng, South Africa, 2047

[www.airports.co.za](http://www.airports.co.za)

Airports Company South Africa SOC Ltd Reg No 1993/004149/30 VAT no 4930138393



## **Appendix U**

Issue: 1

Issue Date: 28/02/2014

Page 23

**Tel +27 11 723 1400 Fax +27 11 453 9354**

**The Maples, Riverwoods, 24 Johnson Road, Bedfordview, Gauteng, South Africa, 2008**

**P O Box 75480, Gardenvue, Gauteng, South Africa, 2047**

**[www.airports.co.za](http://www.airports.co.za)**

Airports Company South Africa SOC Ltd Reg No 1993/004149/30 VAT no 4930138393





## **Appendix V**

Issue: 1

Issue Date: 28/02/2014

Page 24

Tel +27 11 723 1400 Fax +27 11 453 9354

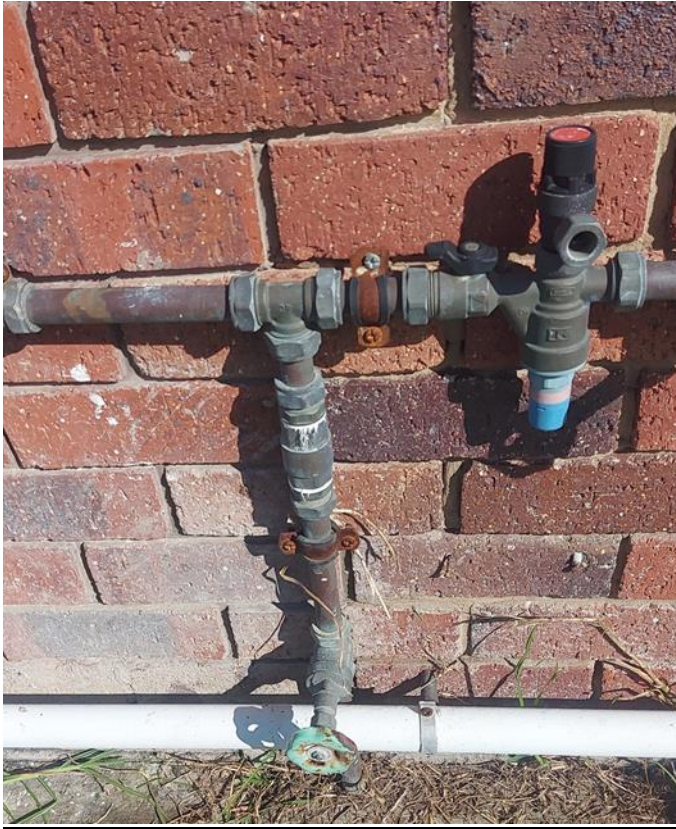
The Maples, Riverwoods, 24 Johnson Road, Bedfordview, Gauteng, South Africa, 2008

P O Box 75480, Gardenvue, Gauteng, South Africa, 2047

[www.airports.co.za](http://www.airports.co.za)

Airports Company South Africa SOC Ltd Reg No 1993/004149/30 VAT no 4930138393





## **Appendix W**

Issue: 1

Issue Date: 28/02/2014

Page 25

Tel +27 11 723 1400 Fax +27 11 453 9354

The Maples, Riverwoods, 24 Johnson Road, Bedfordview, Gauteng, South Africa, 2008

P O Box 75480, Gardenvue, Gauteng, South Africa, 2047

[www.airports.co.za](http://www.airports.co.za)

Airports Company South Africa SOC Ltd Reg No 1993/004149/30 VAT no 4930138393



## **Appendix X**

Issue: 1

Issue Date: 28/02/2014

Page 26

**Tel +27 11 723 1400 Fax +27 11 453 9354**

**The Maples, Riverwoods, 24 Johnson Road, Bedfordview, Gauteng, South Africa, 2008**

**P O Box 75480, Gardenvue, Gauteng, South Africa, 2047**

**[www.airports.co.za](http://www.airports.co.za)**

Airports Company South Africa SOC Ltd Reg No 1993/004149/30 VAT no 4930138393



## **Appendix Y**

Issue: 1

Issue Date: 28/02/2014

Page 27

**Tel +27 11 723 1400 Fax +27 11 453 9354**

**The Maples, Riverwoods, 24 Johnson Road, Bedfordview, Gauteng, South Africa, 2008**

**P O Box 75480, Gardenvue, Gauteng, South Africa, 2047**

**[www.airports.co.za](http://www.airports.co.za)**

Airports Company South Africa SOC Ltd Reg No 1993/004149/30 VAT no 4930138393



## **Appendix Z**

Issue: 1

Issue Date: 28/02/2014

Page 28

**Tel +27 11 723 1400 Fax +27 11 453 9354**

**The Maples, Riverwoods, 24 Johnson Road, Bedfordview, Gauteng, South Africa, 2008**

**P O Box 75480, Gardenvue, Gauteng, South Africa, 2047**

**[www.airports.co.za](http://www.airports.co.za)**

Airports Company South Africa SOC Ltd Reg No 1993/004149/30 VAT no 4930138393



## **Appendix AA**

Issue: 1

Issue Date: 28/02/2014

Page 29

**Tel +27 11 723 1400 Fax +27 11 453 9354**

**The Maples, Riverwoods, 24 Johnson Road, Bedfordview, Gauteng, South Africa, 2008**

**P O Box 75480, Gardenvue, Gauteng, South Africa, 2047**

**[www.airports.co.za](http://www.airports.co.za)**

Airports Company South Africa SOC Ltd Reg No 1993/004149/30 VAT no 4930138393



## **Appendix AB**

Issue: 1

Issue Date: 28/02/2014

Page 30

**Tel +27 11 723 1400 Fax +27 11 453 9354**

**The Maples, Riverwoods, 24 Johnson Road, Bedfordview, Gauteng, South Africa, 2008**

**P O Box 75480, Gardenvue, Gauteng, South Africa, 2047**

**[www.airports.co.za](http://www.airports.co.za)**

Airports Company South Africa SOC Ltd Reg No 1993/004149/30 VAT no 4930138393



## **Appendix AC**

Issue: 1

Issue Date: 28/02/2014

Page 31

**Tel +27 11 723 1400 Fax +27 11 453 9354**

**The Maples, Riverwoods, 24 Johnson Road, Bedfordview, Gauteng, South Africa, 2008**

**P O Box 75480, Gardenvue, Gauteng, South Africa, 2047**

**[www.airports.co.za](http://www.airports.co.za)**

Airports Company South Africa SOC Ltd Reg No 1993/004149/30 VAT no 4930138393





Issue: 1

Issue Date: 28/02/2014

Page 32

**Tel +27 11 723 1400 Fax +27 11 453 9354**

**The Maples, Riverwoods, 24 Johnson Road, Bedfordview, Gauteng, South Africa, 2008**

**P O Box 75480, Gardenvue, Gauteng, South Africa, 2047**

**[www.airports.co.za](http://www.airports.co.za)**

Airports Company South Africa SOC Ltd Reg No 1993/004149/30 VAT no 4930138393





## SECTION 3: PREFERENCE POINTS AND PRICE

### 3.1 Preference Points Claims

In terms of the PPPFA and its regulations only a maximum of 20 points may be awarded for preference.

The 80/20 Preference Point System for bids with a Rand value of more than R30,000-00 but not exceeding R50,000,000-00 (all applicable taxes included)

The tender will therefore be evaluated using 80/20 preference points system: This means that on the 80/20 system the B-BBEE status level of contributor will earn the bidder points out of 20

- 3.2.1 Failure on the part of a bidder to fill in and/or to sign this form and submit a B-BBEE Verification Certificate from a Verification Agency accredited by the South African Accreditation System (SANAS) or a Registered Auditor approved by the Independent Regulatory Board of Auditors (IRBA), an affidavit in the case of Qualifying Small Enterprises and an Emerging Micro Enterprises or an Auditor/Accounting Officer as contemplated in the Close Corporation Act (CCA) together with the bid, will be interpreted to mean that preference points for B-BBEE status level of contribution are not claimed.
- 3.2.2 ACSA reserves the right to require of a bidder, either before a bid is adjudicated or at any time subsequently, to substantiate any claim in regard to preferences, in any manner required by ACSA.

### 3.2 Definitions

- 3.2.1 **“All Applicable Taxes”** includes value-added tax, pay as you earn, income tax, unemployment insurance fund contributions and skills development levies;
- 3.2.2 **“B-BBEE”** means broad-based black economic empowerment as defined in section 1 of the Broad - Based Black Economic Empowerment Act;
- 3.2.3 **“B-BBEE status level of contributor”** means the B-BBEE status received by a measured entity based on its overall performance using the relevant scorecard contained in the Codes of Good Practice on

Issue: 1

Issue Date: 28/02/2014

Page 33

Tel +27 11 723 1400 Fax +27 11 453 9354

The Maples, Riverwoods, 24 Johnson Road, Bedfordview, Gauteng, South Africa, 2008

P O Box 75480, Gardenvue, Gauteng, South Africa, 2047

[www.airports.co.za](http://www.airports.co.za)



Black Economic Empowerment, issued in terms of section 9(1) of the Broad-Based Black Economic Empowerment Act;

- 3.2.4 **“Broad-Based Black Economic Empowerment Act”** means the Broad-Based Black Economic Empowerment Act, 2003 (Act No. 53 of 2003);
- 3.2.5 **“Comparative Price”** means the price after the factors of a non-firm price and all unconditional discounts that can be utilized have been taken into consideration;
- 3.2.6 **“Consortium or Joint Venture”** means an association of persons for the purpose of combining their expertise, property, capital, efforts, skill and knowledge in an activity for the execution of a contract;
- 3.2.7 **“EME”** means any enterprise with an annual total revenue of R5 million or less in terms of the B-BBEE Codes of Good Practice of 2007 and an entity with a turnover of less than R 10 million in terms of the amended B-BBEE Codes;
- 3.2.8 **“Firm Price”** means the price that is only subject to adjustments in accordance with the actual increase or decrease resulting from the change, imposition, or abolition of customs or excise duty and any other duty, levy or tax, which, in terms of the law or regulation, is binding on the contractor and demonstrably has an influence on the price of any supplies, or the rendering costs of any service, for the execution of the contract;
- 3.2.9 **“Functionality”** means the measurement according to predetermined norms, as set out in the bid documents, of a service or commodity that is designed to be practical and useful, working or operating, taking into account, among other factors, the quality, reliability, viability and durability of a service and the technical capacity and ability of a bidder;
- 3.2.10 **“Non-Firm Prices”** means all prices other than “firm” prices;
- 3.2.11 **“Person”** includes a juristic person;
- 3.2.12 **“Rand Value”** means the total estimated value of a contract in South African currency, calculated at the time of bid invitations, and includes all applicable taxes and excise duties;
- 3.2.13 **“Total Revenue”** bears the same meaning assigned to this expression in the Codes of Good Practice on Black Economic Empowerment, issued in terms of section 9(1) of the Broad-Based Black Economic Empowerment Act and promulgated in the Government Gazette on 9 February 2007;
- 3.2.14 **“Trust”** means the arrangement through which the property of one person is made over or bequeathed to a trustee to administer such property for the benefit of another person; and

Issue: 1

Issue Date: 28/02/2014

Page 34

Tel +27 11 723 1400 Fax +27 11 453 9354  
 The Maples, Riverwoods, 24 Johnson Road, Bedfordview, Gauteng, South Africa, 2008  
 P O Box 75480, Gardenvue, Gauteng, South Africa, 2047  
[www.airports.co.za](http://www.airports.co.za)



3.2.15 “**Trustee**” means any person, including the founder of a trust, to whom property is bequeathed in order for such property to be administered for the benefit of another person.

### **3.3 Adjudication Using A Point System**

- 3.3.1 The bidder obtaining the highest number of total points will be awarded the contract, unless objective criteria exist justifying an award to another bidder or ACSA exercises one or more of its disclaimers.
- 3.3.2 Preference points will be calculated after prices have been brought to a comparative basis taking into account all factors of non-firm prices and all unconditional discounts
- 3.3.3 Points scored will be rounded off to the nearest 2 decimal places.

### **3.4 Award of Business where Bidders have Scored Equal Points Overall**

- 3.4.1 In the event that two or more bids have scored equal total points, the successful bid will be the one scoring the highest number of preference points for B-BBEE.
- 3.4.2 However, when functionality is part of the evaluation process and two or more bids have scored equal points including equal preference points for B-BBEE, the successful bid will be the one scoring the highest score for functionality.
- 3.4.3 Should two or more bids be equal in all respects, the award will be decided by the drawing of lots.

### **3.5 Points Awarded for Price**

- 3.5.1 The 80/20 Preference Point Systems

A maximum of 80 points is allocated for price on the following basis:

**80/20**

Issue: 1

Issue Date: 28/02/2014

Page 35

Tel +27 11 723 1400 Fax +27 11 453 9354  
The Maples, Riverwoods, 24 Johnson Road, Bedfordview, Gauteng, South Africa, 2008  
P O Box 75480, Gardenvue, Gauteng, South Africa, 2047  
[www.airports.co.za](http://www.airports.co.za)

Airports Company South Africa SOC Ltd Reg No 1993/004149/30 VAT no 4930138393

$$P_s = 80 \left( 1 - \frac{P_t - P_{\min}}{P_{\min}} \right)$$

Where

$P_s$  = Points scored for comparative price of bid under consideration

$P_t$  = Comparative price of bid under consideration

$P_{\min}$  = Comparative price of lowest acceptable bid

### 3.6 Points Awarded for B-BBEE Status Level of Contribution

3.6.1 In terms of Regulation 5 (2) and 6 (2) of the Preferential Procurement Regulations, preference points must be awarded to a bidder for attaining the B-BBEE status level of contribution in accordance with the table below:

B-BBEE Contributor	Status Level of	Number of Points (90/10 system)	Number of Points (80/20 system)
1		10	20
2		9	18
3		8	16
4		5	12
5		4	8
6		3	6
7		2	4
8		1	2
Non-compliant contributor		0	0

Issue: 1

Issue Date: 28/02/2014

Page 36

Tel +27 11 723 1400 Fax +27 11 453 9354

The Maples, Riverwoods, 24 Johnson Road, Bedfordview, Gauteng, South Africa, 2008

P O Box 75480, Gardenvue, Gauteng, South Africa, 2047

[www.airports.co.za](http://www.airports.co.za)



Bidders who qualify as EMEs in terms of the B-BBEE Act must submit an affidavit stating its annual turnover, certificate issued by an Accounting Officer as contemplated in the CCA or a Verification Agency accredited by SANAS or a Registered Auditor. Registered auditors do not need to meet the prerequisite for IRBA's approval for the purpose of conducting verification and issuing EMEs with B-BBEE Status Level Certificates.

- 1 Bidders other than EMEs must submit their original and valid B-BBEE status level verification certificate or a certified copy thereof, substantiating their B-BBEE rating issued by a Registered Auditor approved by IRBA or a Verification Agency accredited by SANAS. QSEs have an additional option of submitting a sworn affidavit as its B-BBEE certificate in terms of the amendments to the B-BBEE Codes of Good Practice in 2013.
- 2 A trust, consortium or joint venture, will qualify for points for their B-BBEE status level as a legal entity, provided that the entity submits their B-BBEE status level certificate.
- 3 A trust, consortium or joint venture will qualify for points for their B-BBEE status level as an unincorporated entity, provided that the entity submits their consolidated B-BBEE scorecard as if they were a group structure and that such a consolidated B-BBEE scorecard is prepared for every separate bid.
- 4 Tertiary institutions and public entities will be required to submit their B-BBEE status level certificates in terms of the specialized scorecard contained in the B-BBEE Codes of Good Practice.
- 5 A person will not be awarded points for B-BBEE status level if it is indicated in the bid documents that such a bidder intends sub-contracting more than 25% of the value of the contract to any other enterprise that does not qualify for at least the points that such a bidder qualifies for, unless the intended sub-contractor is an EME that has the capability and ability to execute the sub-contract.
- 6 A person awarded a contract may not sub-contract more than 25% of the value of the contract to any other enterprise that does not have an equal or higher B-BBEE status level than the person concerned, unless the contract is sub-contracted to an EME that has the capability and ability to execute the sub-contract.

Issue: 1

Issue Date: 28/02/2014

Page 37

**Tel +27 11 723 1400 Fax +27 11 453 9354**

**The Maples, Riverwoods, 24 Johnson Road, Bedfordview, Gauteng, South Africa, 2008**

**P O Box 75480, Gardenvue, Gauteng, South Africa, 2047**

**[www.airports.co.za](http://www.airports.co.za)**



## Bid Declaration

Bidders who claim points in respect of B-BBEE Status Level of Contribution must complete the following:

### **B-BBEE Status Level of Contribution Claimed in Terms of Paragraphs 3.2.1 and 3.7.1:**

B-BBEE Status Level of Contribution: \_\_\_\_\_ = \_\_\_\_\_ (maximum of 10 or 20 points)

(Points claimed in respect of paragraph 4.8.1 must be in accordance with the table reflected in paragraph 4.7.1 and must be substantiated by means of a B-BBEE certificate issued by a Verification Agency accredited by SANAS or a Registered Auditor approved by IRBA or an Accounting Officer as contemplated in the CCA).

Issue: 1

Issue Date: 28/02/2014

Page 38

Tel +27 11 723 1400 Fax +27 11 453 9354

The Maples, Riverwoods, 24 Johnson Road, Bedfordview, Gauteng, South Africa, 2008

P O Box 75480, Gardenvue, Gauteng, South Africa, 2047

[www.airports.co.za](http://www.airports.co.za)



## SECTION 4: EVALUATION CRITERIA

### 4.1 Evaluation Criteria

ACSA will use a pre-determined evaluation criterion when considering received bids. The evaluation criteria will consider the commitment made for local production and content/ Supplier Development/ functionality/technical/Price and B-BBEE. During the evaluation of received bids ACSA will make an assessment whether all the bids comply with set minimum requirements and whether all returnable documents/information have been submitted. Bidders which fail to meet minimum requirements, thresholds or have not submitted required mandatory documents will be disqualified from the tender process.

The requirements of any given stage must be complied with prior to progression to the next stage. ACSA reserves the right to disqualify bidders without requesting any outstanding document/information.

### 4.2 Mandatory Requirements

A list of mandatory returnable documents must be consulted to understand which documents are required at the closing date and time. Further, to the mandatory returnable documents/information ACSA will only consider bidders which have:

### 4.3 Local Content and Production

Bidders must complete and return SBD 6.2 (Declaration of Local Content and Production form) on the closing date and time of this tender. ACSA will disqualify any bidder which has not submitted the SBD 6.2 form on the closing date and time. The form must be completed under **Section 2** at 2.8 of this tender document.

### 4.4 Functionality / Technical

#### 4.4.1 Functionality hurdle breakdown

N/A

The description of the functionality evaluation criteria is explained below.

Issue: 1

Issue Date: 28/02/2014

Page 39

Tel +27 11 723 1400 Fax +27 11 453 9354

The Maples, Riverwoods, 24 Johnson Road, Bedfordview, Gauteng, South Africa, 2008

P O Box 75480, Gardenvue, Gauteng, South Africa, 2047

[www.airports.co.za](http://www.airports.co.za)



#### **4.5 Price and B-BBEE**

This is the final stage of the evaluation process and will be based on the PPPFA preference point system of **80/20**

NB. This tender will only be evaluated on Price and B-BBEE

Issue: 1

Issue Date: 28/02/2014

Page 40

**Tel +27 11 723 1400 Fax +27 11 453 9354**  
**The Maples, Riverwoods, 24 Johnson Road, Bedfordview, Gauteng, South Africa, 2008**  
**P O Box 75480, Gardenvue, Gauteng, South Africa, 2047**  
**[www.airports.co.za](http://www.airports.co.za)**





## SECTION 5: DECLARATION FORM

### 5.1 Making a Declaration

Any legal person or persons having a relationship with persons employed by ACSA, including a blood relationship, may submit a bid in terms of this tender document. In view of possible allegations of unfairness, should the resulting bid, or part thereof, be awarded to persons connected with or related to ACSA employees, it is required that the bidder or his/her authorised representative declare his/her position in relation to ACSA employees or any member of the evaluation or adjudication committee which will consider bids. Furthermore, ACSA requires all bidders to declare that they have not acted in any manner inconsistent with the law, policy or fairness.

### 5.2 All bidders must complete a declaration of interest form below:

Full name of the bidder or representative of  
the bidding entity

Identity Number

Position held in the bidding entity

Registration number of the bidding entity

Tax Reference number of the bidding entity

VAT Registration number of the bidding entity

I/We certify that there is a / no relationship between the bidding entity or any of its shareholders / directors / owner / member / partner with any ACSA employee or official.

Where a relationship exists, please provide details of the ACSA employee or official and the extent of the relationship below

Issue: 1

Issue Date: 28/02/2014

Page 41

Tel +27 11 723 1400 Fax +27 11 453 9354

The Maples, Riverwoods, 24 Johnson Road, Bedfordview, Gauteng, South Africa, 2008

P O Box 75480, Gardenvue, Gauteng, South Africa, 2047

[www.airports.co.za](http://www.airports.co.za)




---



---



---

### 5.3 Full Names of Directors / Trustees / Members / Shareholders of the bidding entity

Full Name	Identity Number	Personal Income Tax Reference Number

**5.4 I/We declare that we have not acted in any manner which promotes unfairness, contravenes any law or is against public morals. We further certify that we will in full compliance of this tender terms and conditions as well as ACSA policies in the event that we are successful in this tender.**

#### Declaration:

I/We the undersigned \_\_\_\_\_ (Name) hereby certify that the information furnished in this tender document is true and correct. We further certify that we understand that where it is found that we have made a false declaration or statement in this tender, ACSA

Issue: 1

Issue Date: 28/02/2014

Page 42

Tel +27 11 723 1400 Fax +27 11 453 9354

The Maples, Riverwoods, 24 Johnson Road, Bedfordview, Gauteng, South Africa, 2008

P O Box 75480, Gardenvue, Gauteng, South Africa, 2047

[www.airports.co.za](http://www.airports.co.za)



may disqualify our bid or terminate a contract we may have with ACSA where we are successful in this tender.

\_\_\_\_\_  
Signature

\_\_\_\_\_  
Date

\_\_\_\_\_  
Position

\_\_\_\_\_  
Name of bidder

Issue: 1

Issue Date: 28/02/2014

Page 43

**Tel +27 11 723 1400 Fax +27 11 453 9354**  
**The Maples, Riverwoods, 24 Johnson Road, Bedfordview, Gauteng, South Africa, 2008**  
**P O Box 75480, Gardenvue, Gauteng, South Africa, 2047**  
**[www.airports.co.za](http://www.airports.co.za)**

Airports Company South Africa SOC Ltd Reg No 1993/004149/30 VAT no 4930138393



## Section 6: DECLARATION OF FORBIDDEN PRACTICES

I/We hereby declare that we have not/been found guilty of any illegal activities relating to corruption, fraud, B-BBEE fronting, anti-competitive practices and/or blacklisted by an organ of State Owned Company, etc. and/or any other forbidden practices.

I/We declare the following:

	Description	Penalty	Organ of State / State Owned Company
--	-------------	---------	--------------------------------------

Furthermore, I/We declare that to the best of my/our knowledge there is /are no further practices to be declared or which are in the process of being finalised. The following are alleged practices which have not yet been finalised.

	Description	Organ of State / State Owned Company
a)		
b)		

This declaration was signed on \_\_\_\_\_ of \_\_\_\_\_ 202\_\_\_\_\_

Name:

\_\_\_\_\_

Designation:

\_\_\_\_\_

Signature:

\_\_\_\_\_

Issue: 1

Issue Date: 28/02/2014

Page 44

Tel +27 11 723 1400 Fax +27 11 453 9354

The Maples, Riverwoods, 24 Johnson Road, Bedfordview, Gauteng, South Africa, 2008

P O Box 75480, Gardenvue, Gauteng, South Africa, 2047

[www.airports.co.za](http://www.airports.co.za)