

SPECIFICATIONS	
Introduction	<p>CapeNature seeks proposals for the harvesting of timber from unmanaged/untendered mature <i>Eucalyptus</i>, <i>Acacia</i> and <i>Pinus</i> species woodlots that have invaded the De Hoop Nature Reserve near Bredasdorp.</p> <p>Approx. 428ha of mixed invasive plant species is available for commercial harvesting from set-aside areas, (see Potberg locality for high density proximity).</p> <p>Refer also to tabled units and densities per species – timber volumes to be verified.</p> <p>Closing date: 7 July 2023. All documentation to be submitted to ibrey@capenature.co.za</p>
Requirements	<p>Following a compulsory site briefing, a 'portfolio of evidence' and proposal to include the following:</p> <ul style="list-style-type: none"> • Demonstrated and successful business experience in related activities. • Quantified resource capacity and equipment to complete operations within proposed timeframe. • Draft, manage and implement an Environmental Management Plan (EMP) to mitigate for all impacts, e.g. vehicle harvesting tracks, wildfire and pollution. • Harvest and remove all commercial timber from allocated areas and restore sites as per an approved (EMP). • Site rehabilitation to include herbicide treatment to prevent regrowth, stacking of branches for burning and erosion control, (tracks). • Proposed work schedule over suggested three year implementation. • Ensure relevant OHS compliance. • Previous Year's Audited Financial Statements
Other	<ul style="list-style-type: none"> • Proposal based on an average cost per hectare for the total area of 428ha, i.e. payment per Nbal/area calculated per ha cleared. • Secondary industries or total biomass removal encouraged, (e.g. charcoal, rustic furniture, eco logs, wood chips) may be proposed. • Principle contractor may sub-contract however remains responsible.
Location	<p>De Hoop Nature Reserve, Potberg Management Office GPS co-ordinates: 34° 22' 30.57" S 20° 31' 59.52" E</p> <p>Situated in the rural Overberg District, 55 km from Bredasdorp, with gravel road access.</p>

Site Briefing	<p>Interested parties to register their attendance before 15 June 2023 for a compulsory site briefing to be held on 22 June 2023 at 10 AM with the contract person below:</p> <p>For proposal enquiries please contact the De Hoop Nature Reserve Conservation Manager.</p>
Contact details	<p>RSVP for site briefing: Mr Imran Brey: ibrey@capenature.co.za</p> <p>Enquiries: Mark Williams: mwilliams@capenature.co.za Conservation Manager: De Hoop NR Cellphone Number: 062 272 5371</p> <p>Mark Johns: mjohns@capenature.co.za Cellphone Number: 074 626 2388</p>
Rejection of Quotes/Proposals	<p>Any effort by a bidder to influence the bid evaluation, comparisons, or award decisions in any manner, may result in rejection of the bid. CapeNature shall reject a bid if the bidder has committed a proven corrupt or fraudulent act in competing for a particular contract. CapeNature may disregard any bid if the bidder or any of its subcontractors:</p> <ul style="list-style-type: none"> a) Is not tax compliant b) Have abused the Supply Chain Management (SCM) system of a Department or any other government department, agency or entity. c) Have committed proven fraud or any other improper conduct in relation to such system. d) Have failed to perform on any previous contract. e) Supplied incorrect information in the bid documentation.
Closing Date	<p>7 July 2023 at 4PM</p> <p>All documentation to be submitted to ibrey@capenature.co.za</p>

Reserve Code	Descriptive name for area	Mini compartment/Nbal number	Xhectares	Sp1_Name	Sp1_Age /Size	Sp1_Density (actual %)	Sp1_Clearing Method	Sp2_Name	Sp2_Age /Size	Sp2_Density (actual %)	Sp2_Clearing Method	Sp3_Name	Sp3_Age /Size	Sp3_Density (actual %)	Sp3_Clearing Method	Sp4_Name	Sp4_Age /Size	Sp4_Density (actual %)	Sp4_Clearing Method	Total Density (Average %)
DEHP	Potberg	G50J200043	17.814	<i>Eucalyptus camaldulensis</i>	Adult	15	cut-stump trtment	<i>Eucalyptus camaldulensis</i>	Young	12	cut-stump trtment	<i>Acacia mearnsii</i>	Young	12	cut-stump trtment	<i>Acacia longifolia</i>	Young	12	cut-stump trtment	37.50
DEHP	Potberg - Vulture colony	G50J200064	12.059	<i>Acacia mearnsii</i>	Adult	30	cut-stump trtment	<i>Acacia mearnsii</i>	Young	25	cut-stump trtment	<i>Eucalyptus camaldulensis</i>	Adult	5	cut-stump trtment	<i>Acacia longifolia</i>	Young	10	cut-stump trtment	70.00
DEHP	Potberg	G50J200070	224.222	<i>Acacia cyclops</i>	Adult	32	cutting or slashing	<i>Acacia longifolia</i>	Adult	15	cut-stump trtment	<i>Acacia longifolia</i>	Young	7	cut-stump trtment	<i>Acacia longifolia</i>	Adult	7	cut-stump trtment	61.00
DEHP	Potberg	G50J200097	54.837	<i>Eucalyptus lehmannii</i>	Adult	17	cut-stump trtment	<i>Pinus pinaster</i>	Adult	17	cutting or slashing	<i>Acacia dealbata</i>	Adult	12	cut-stump trtment					46.00
DEHP	Potberg	G50J200098	30.133	<i>Pinus spp</i>	Adult	32	cutting or slashing	<i>Acacia longifolia</i>	Young	12	cut-stump trtment	<i>Acacia mearnsii</i>	Adult	12	cut-stump trtment					56.00
DEHP	Potberg	G50J200099	11.096	<i>Acacia pycnantha</i>	Adult	10	cut-stump trtment	<i>Acacia pycnantha</i>	Young	17	cut-stump trtment	<i>Acacia mearnsii</i>	Adult	12	cut-stump trtment					39.00
DEHP	Potberg	G50J200323	16.184	<i>Acacia cyclops</i>	Adult	37	cutting or slashing	<i>Acacia saligna</i>	Adult	16	cut-stump trtment	<i>Acacia mearnsii</i>	Young	17	cut-stump trtment					70.00
DEHP	Potberg	G50J200328	14.675	<i>Acacia cyclops</i>	Mature	7	cutting or slashing	<i>Eucalyptus camaldulensis</i>	Adult	32	cut-stump trtment	<i>Eucalyptus camaldulensis</i>	Coppice	12	cut-stump trtment					51.00
DEHP	Potberg	G50J200329	29.341	<i>Eucalyptus camaldulensis</i>	Mature	12	cut-stump trtment	<i>Eucalyptus camaldulensis</i>	Adult	42	cut-stump trtment	<i>Eucalyptus grandis</i>	Young	3	cut-stump trtment					57.00
DEHP	Potberg	G50J200331	2.432	<i>Eucalyptus camaldulensis</i>	Mature	7	cut-stump trtment	<i>Eucalyptus camaldulensis</i>	Adult	47	cut-stump trtment	<i>Eucalyptus lehmannii</i>	Adult	7	cut-stump trtment					61.00
DEHP	Potberg	G50J200332	15.852	<i>Eucalyptus camaldulensis</i>	Mature	7	cut-stump trtment	<i>Eucalyptus camaldulensis</i>	Adult	37	cut-stump trtment	<i>Acacia mearnsii</i>	Adult	7	cut-stump trtment					51.00
			428.645																	

Table 1. Eleven units and densities per species for harvesting – timber volumes to be verified.



Figures 1 & 2. Examples of unmanaged blue gum tree woodlots for harvesting at the Potberg section within the De Hoop Nature Reserve.

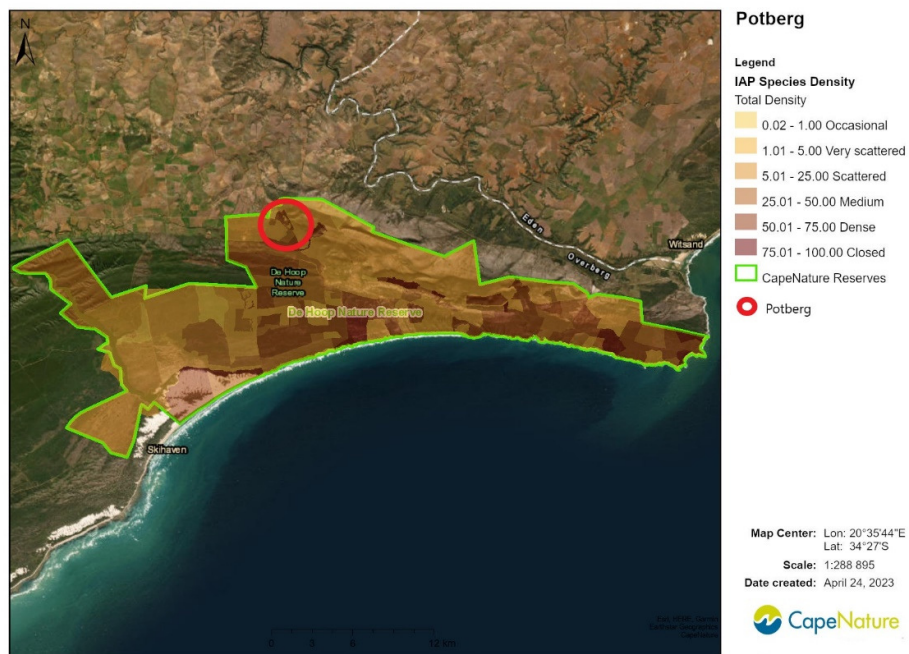


Figure 3. Potberg section within De Hoop of relatively high alien plant biomass encircled.



Figure 4. Potberg section – mini compartment Nbal numbers encircled and as tabled.