

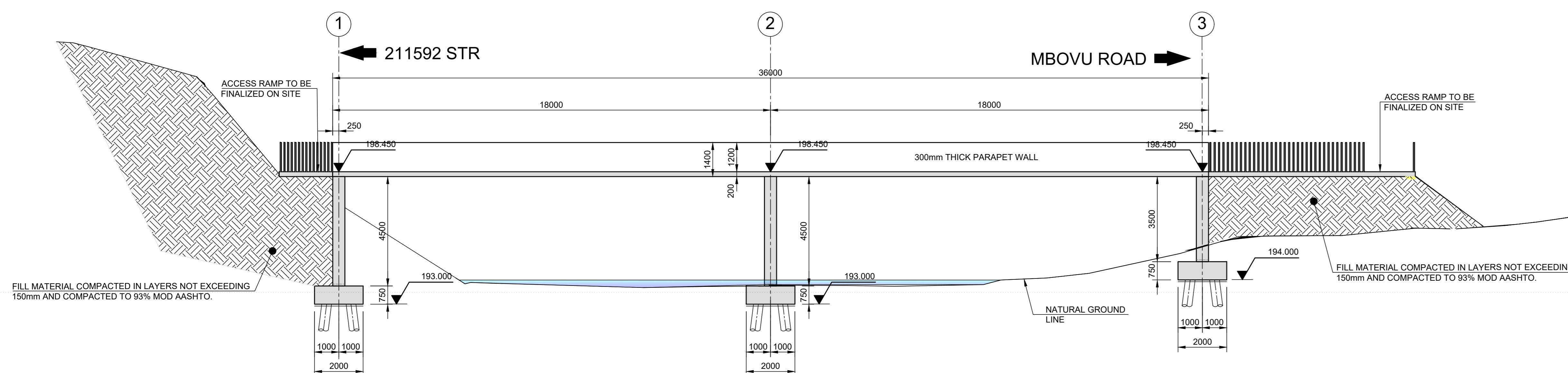
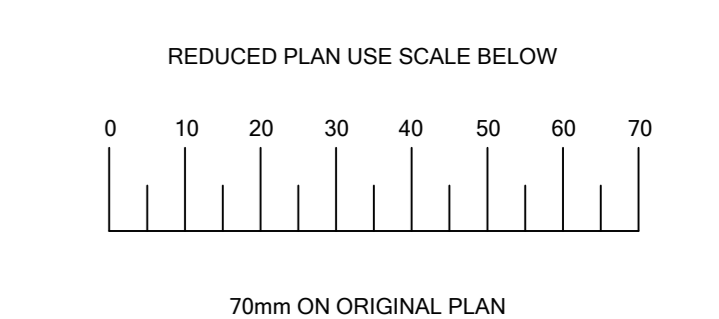


BRIDGE ELEVATION  
SCALE 1:100

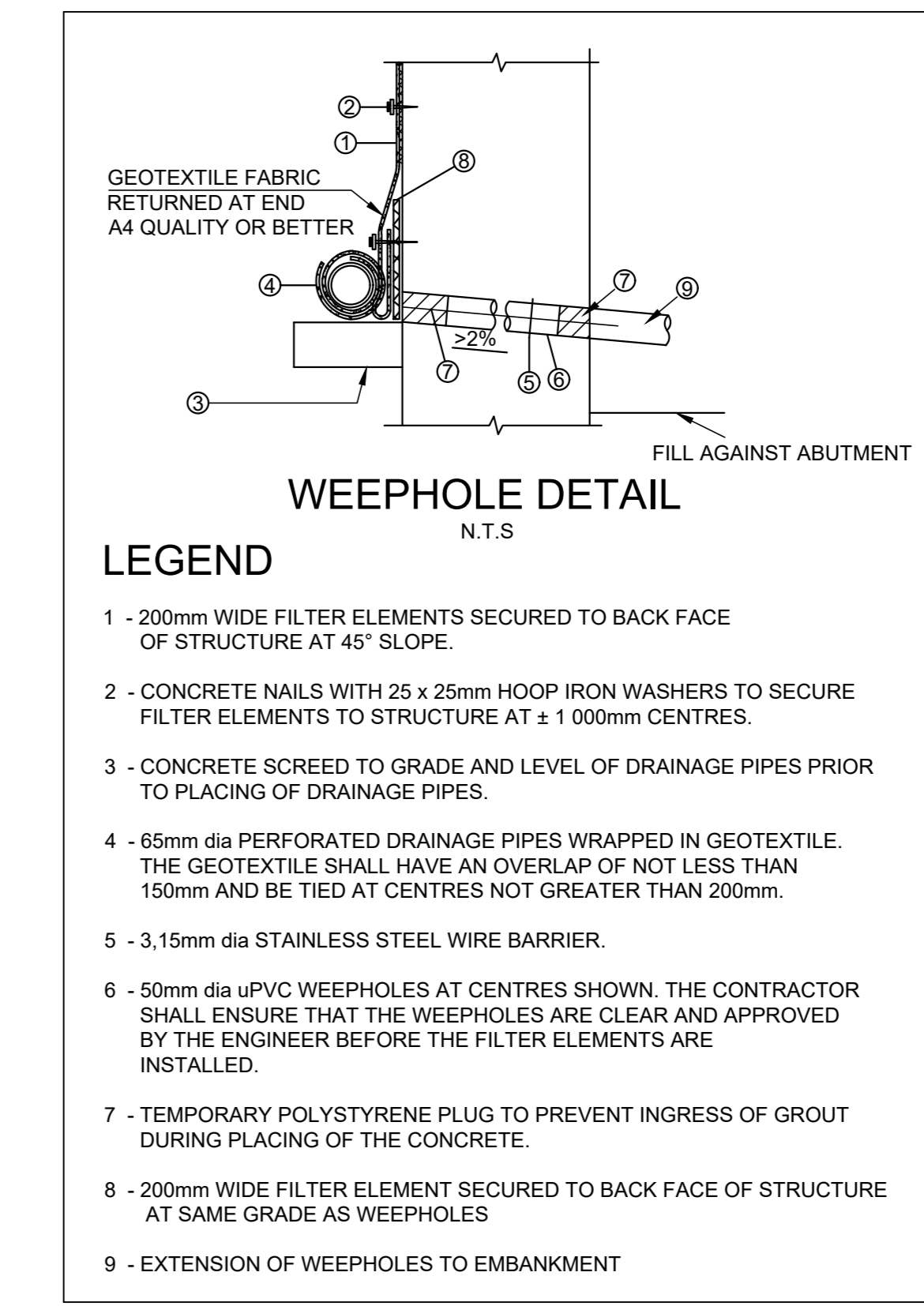
ALL DIMENSIONS TO BE CHECKED ON SITE PRIOR TO THE COMMENCEMENT OF ANY WORK.  
ANY DISCREPANCIES TO BE REPORTED TO THE ENGINEER IMMEDIATELY.  
THIS DRAWING IS TO BE READ IN CONJUNCTION WITH ALL RELATED STRUCTURAL DRAWINGS.



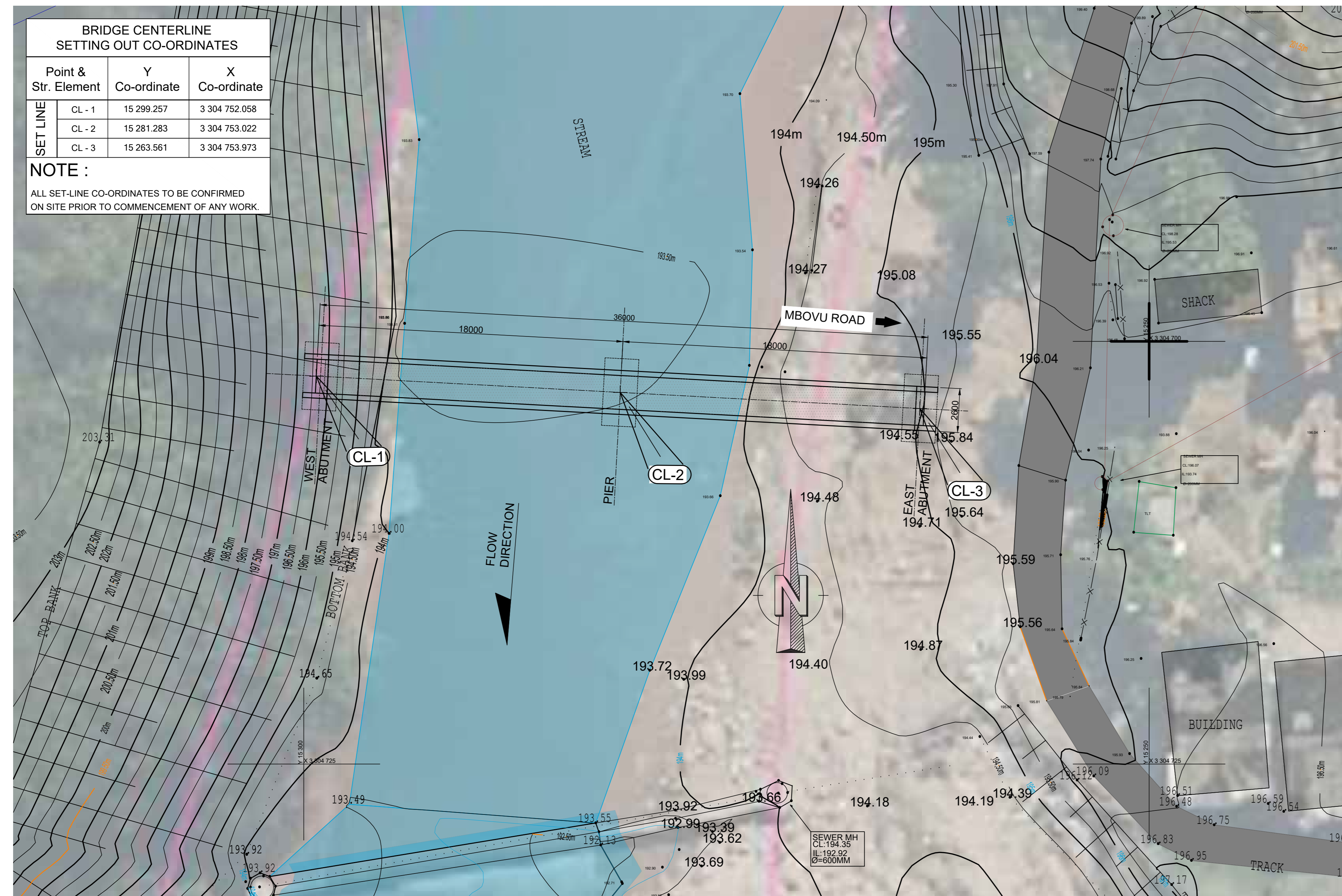
LOCALITY LAYOUT PLAN  
SCALE 1 : 10 000



LONGITUDINAL SECTION TAKEN AT CENTRELINE  
SCALE 1 : 100



- LEGEND**
- 200mm WIDE FILTER ELEMENTS SECURED TO BACK FACE OF STRUCTURE AT 45° SLOPE.
  - CONCRETE NAILS WITH 25 x 25mm HOOP IRON WASHERS TO SECURE FILTER ELEMENTS TO STRUCTURE AT ± 1 000mm CENTRES.
  - CONCRETE SCREED TO GRADE AND LEVEL OF DRAINAGE PIPES PRIOR TO PLACING OF DRAINAGE PIPES.
  - 65mm dia PERFORATED DRAINAGE PIPES WRAPPED IN GEOTEXTILE. THE GEOTEXTILE SHALL HAVE AN OVERLAP OF NOT LESS THAN 150mm AND BE TIED AT CENTRES NOT GREATER THAN 200mm.
  - 3.15mm dia STAINLESS STEEL WIRE BARRIER.
  - 50mm dia uPVC WEEPHOLE AT CENTRES SHOWN. THE CONTRACTOR SHALL ENSURE THAT THE WEEPHOLES ARE CLEAR AND APPROVED BY THE ENGINEER BEFORE THE FILTER ELEMENTS ARE INSTALLED.
  - TEMPORARY POLYSTYRENE PLUG TO PREVENT INGRESS OF GROUT DURING PLACING OF THE CONCRETE.
  - 200mm WIDE FILTER ELEMENT SECURED TO BACK FACE OF STRUCTURE AT SAME GRADE AS WEEPHOLES
  - EXTENSION OF WEEPHOLES TO EMBANKMENT



- NOTES:**
- GENERAL BRIDGE NOTES**  
DESCRIPTION - THE BRIDGE IS A SINGLE SPAN CONVENTIONALLY REINFORCED CONCRETE U-BEAM INTEGRAL WITH ABUTMENTS.  
DESIGN METHOD - LIMIT STATE  
DESIGN CODE - TMH7 PART 3
  - MATERIAL STRENGTHS & STRESSES**  
CONCRETE: CLASS(MPa/mm)  
BLINDING - 15/19  
PILING - 30/19  
FOUNDATIONS - 30/19  
ABUTMENTS & PIERS - 30/19  
DECK - 30/19  
REINFORCEMENT:  
MILD STEEL - 250 MPa  
HIGH-YIELD-STRESS STEEL - 450 MPa
  - SUBSTRUCTURE**  
a) FOUNDATIONS  
FOUNDING DEPTHS TO BE DETERMINED ON SITE. FOUNDATIONS ARE TO BE SECURED WITH 4000 CFA PILES. ALL WORK TO BE IN ACCORDANCE TO ENGINEERS SPECIFICATION AND APPROVAL.  
b) CONCRETE COVER  
CAST AGAINST EARTH - 40mm  
FOUNDATIONS (SHUTTERED) - 40mm  
FOUNDATIONS (UNDERNEATH) - 75mm  
EXPOSED SURFACES - 40mm  
c) CHAMFERS TO ALL EXPOSED SHARP CORNERS 25 x 25mm

Revision	Date	Description
V1	08/04/2026	FOR TENDER PURPOSES

**NOTE:** No construction work to commence until land and servitude acquisitions have been completed.

Acquisitions completed:

Date: \_\_\_\_\_  
Engineer: \_\_\_\_\_

UNDERGROUND SERVICES CHECKED		
SERVICE	DATE	SIGNATURE
S/WY DRAINS		
SEWERS		
WATER MAINS		
G.P.O CABLES		
ELECTRIC CABLES		
STAIN CABLES		
E.S.C. CABLES		
OIL PIPE LINE		

**NOTE:** Only underground services affected by new construction work are shown. Care must be taken during excavations for road foundations, trenches etc. to avoid damage to underground services such as sewers, mains, cables, water mains and connections. Wherever possible these must be located before work proceeds.

Contract No. **1R - 35384**

Project Title  
**NAZARETH RC PEDESTRIAN BRIDGE, WARD 16**

Drawing Title  
**GENERAL ARRANGEMENT**

Scales: AS SHOWN	Date: 08/04/2026
Designed: X. MKATI	Checked: _____
Drawn: N. MNGENELA	Surveyed: _____
Manager: Structures P.G. Fenton	
Deputy Director: Roads Provision S. Masondo	

T. ZULU	ACTING DIRECTOR:RIM
Drawing No. -----	Sheet of 01 Rev. V1

**FOR TENDER**