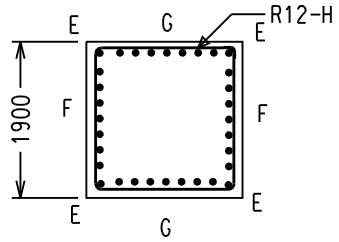
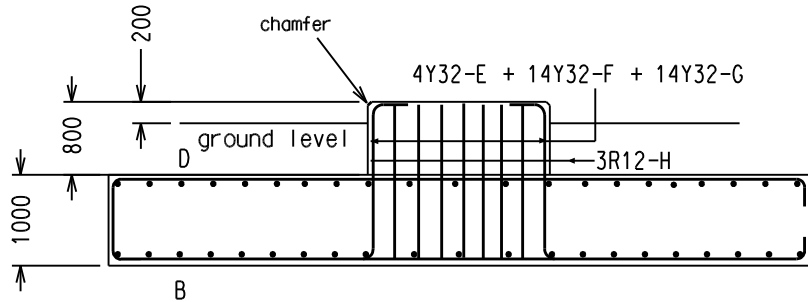


1 2 3 4 5 6 6

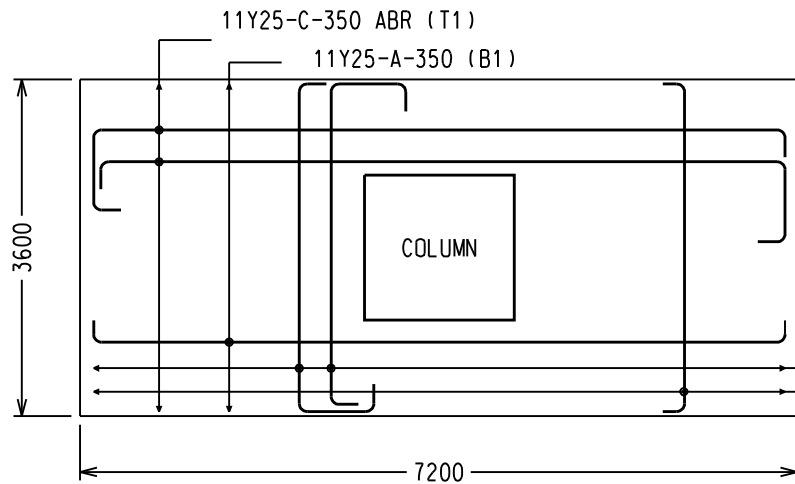
Cover:
Bot:75 mm
Sides:50 mm
Top:50 mm
Cols:30 mm



SECTION COLUMN



SECTION



PLAN

N.T.S.

Note: H.D.Bolts and baseplates are orientated on pairs of diametrically opposite bolts for the in-line and transverse directions.

Base Moment	2500	kNm
Length	7200	mm
Width	3600	mm
Depth	1000	mm
Col Height	800	mm
Col Width	1900	mm
Bolt P.C.D.	as for structure	
H.D.Bolts		
Soil Bearing	165	kN/m ²

excavation volume	41.5	m ³
concrete volume	28.8	m ³
backfill volume	13.4	m ³
concrete strength	25	MPa

1857	kg	7700	steel kg/m ³
------	----	------	-------------------------

No	Dia	Length	Mark	Code	A	B	C	D	Mass
		(mm)			(mm)	(mm)	(mm)	(mm)	(kg)
11	Y25	7450	A	35	7100				310
21	Y25	3850	B	35	3500				306
11	Y25	8400	C	52	300	880	7100	(300)	349
21	Y25	4750	D	52	300	820	3500	(300)	377
4	Y32	2500	E	54	480	1730	(480)		62
14	Y32	2500	F	54	480	1730	(480)		217
14	Y32	2500	G	54	480	1730	(480)		217
3	R 12	7500	H	60	1840	1740			20

REV	REVISION DESCRIPTION	BY	CHKD	AUTH	DATE	PROJECT NO.
3	rationalised. data added	RAS	SM	MN	15/02/07	
2	change layout details	RAS		BM	16/01/04	
1	change column size	RAS		MvR	03/12/17	

Eskom Distribution AUTH: B Meyer DATE: 2003/08/01 CHKD: DATE: DRAWN: R A Scott DATE: 2003/08/01	MONOPOLE FOUNDATIONS STRAIN STRUCTURE 2500kNm MOMENT			
	D-WC-7602	SET	SHEET	REVISION
	07	11	03	

THIS DRAWING IS THE PROPERTY OF ESKOM

1 2 3 4 5 6 6 A4L