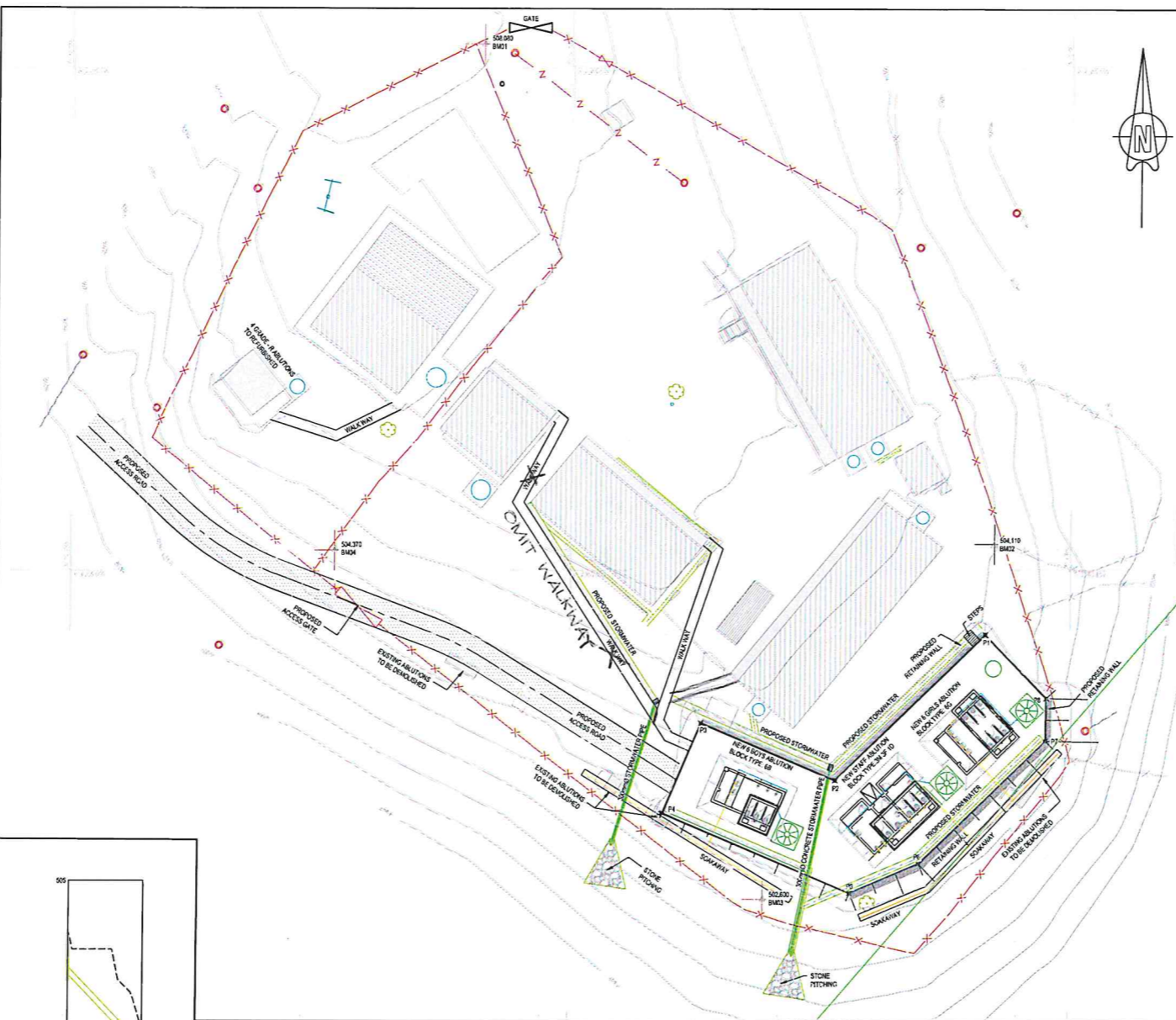




LOCALITY



LEGEND

- STORM WATER LINE
- EXISTING WATER LINES
- PROPOSED WATER LINES
- SOAKAWAY
- EXISTING SEWER LINE
- PROPOSED SEWER LINE
- EXISTING FENCE
- ACCESS GATE
- PROPOSED ACCESS ROAD
- PROPOSED RETAINING WALL
- PROPOSED NEW BUILDING
- EXISTING BUILDING
- PROPOSED JOJO TANK
- EXISTING WATER TANK

LONGSECTION STORMWATER FROM 0.000 TO 14.491

SCALES: Horizontal 1:200, Vertical 1:20, DATUM 500.000

MANHOLE NAME	DISTANCE (m)	GROUND LEVEL (msl)	INVERT LEVEL (msl)	DEPTH COVER (m)	LENGHT (m) / SLOPE (%) / GRADE (1:)	DESIGN FLOW (l/s)	DESIGN VELOCITY (m/s)	PIPE CAPACITY @ 60% D (l/s)	PIPE DESCRIPTION	PIPE BEDDING
0+000	0.000	504.373	504.373	0.00	17.12% / 1:5.8					
0+14.491	14.491	503.511	503.511	0.862	14.98%					

LONGSECTION STORMWATER FROM 0.000 TO 18.613

SCALES: Horizontal 1:200, Vertical 1:20, DATUM 500.000

MANHOLE NAME	DISTANCE (m)	GROUND LEVEL (msl)	INVERT LEVEL (msl)	DEPTH COVER (m)	LENGHT (m) / SLOPE (%) / GRADE (1:)	DESIGN FLOW (l/s)	DESIGN VELOCITY (m/s)	PIPE CAPACITY @ 60% D (l/s)	PIPE DESCRIPTION	PIPE BEDDING
0+000	0.000	504.373	504.373	0.00	10.47% / 1:9.5					
0+18.613	18.613	503.658	503.658	0.715	12.81%					

STORMWATER MANHOLE SETTING OUT DETAILS_COORDINATE SYSTEM WG84

STRUCTURE NAME	Y	X	GROUND ELEVATION	INVERT ELEVATION	RIM TO SUMP DEPTH	PART AND TYPE	MANHOLE COVER TYPE
STORMWATER OUTFALL-01	9 965.696	3 265 677.208	501.511	500.800	0.707	CAST-IN-SITU	STEEL FRAME
GRID INLET-01	9 961.450	3 265 663.182	504.330	503.342	0.988	CAST-IN-SITU	NA

STORMWATER MANHOLE SETTING OUT DETAILS_COORDINATE SYSTEM WG84

STRUCTURE NAME	Y	X	GROUND ELEVATION	INVERT ELEVATION	RIM TO SUMP DEPTH	PART AND TYPE	MANHOLE COVER TYPE
STORMWATER OUTFALL-01	9 965.696	3 265 677.208	501.511	500.800	0.707	CAST-IN-SITU	NA
GRID INLET-01	9 961.450	3 265 663.182	504.330	503.342	0.988	CAST-IN-SITU	STEEL FRAME

BENCH MARKS SETTING OUT COORDINATES

POINT	Y	X	LEVEL
BM01	10 008.871	3 265 597.592	508.090
BM02	9 957.717	3 265 547.525	504.110
BM03	9 960.563	3 265 552.793	502.809
BM04	10 073.549	3 265 647.919	504.373

PLATFORMS SETTING OUT COORDINATES

POINT	Y	X	LEVEL
P1	9 968.650	3 265 656.531	503.300
P2	9 973.650	3 265 671.200	503.300
P3	9 965.655	3 265 655.326	503.300
P4	9 963.768	3 265 672.288	503.300
P5	9 971.623	3 265 682.361	503.300
P6	9 965.126	3 265 673.353	503.300
P7	9 960.477	3 266 667.520	503.300
P8	9 962.414	3 265 652.889	503.300

LAYOUT APPROVED
Hshabau

UHULUMENI WAKWAZULU - NATAL
UMYANGO WEMFUNDO
DEPARTMENT OF EDUCATION
DEPARTMENT VAN ONDERWYS
2022-08-01
ISIKHWAMA SEPODI
PRIVATE BAG/PRIVAATSAK 4 9137
PIETERMARITZBURG 3200
KWAZULU-NATAL GOVERNMENT SERVICES

SUB CONSULTANT

DESIGN CONSULTANT
VUVAMU
Project Management and Engineering Consultants
ADDRESS: 62 Old Main Road
KLOOF 3610
Email: info@vuvamu.co.za
Contact Details: TEL: (031) 003 4270, FAX: (031) 003 4271

FUNCTION	NAME	SIGNATURE
DESIGNED BY	A.XOZWA	
DRAWN BY	L.NCALA	
DESIGN CHECKED BY	A.XOZWA	
DRAWING CHECKED BY	S.MBUTHUMA	
NAME	S.MBUTHUMA	SIGNATURE
DATE	31 MARCH 2022	PROF REG No. 201833300301
SCALE	1:200	SHEET SIZE A0
Drawing No.		Sheet
		Rev.C

CONSTRUCTION INFORMATION

MAIN LAYER	START DATE	FINISH DATE	W/O NUMBER	LEVEL OF SERVICE	SUPERVISOR NAME	CONTACT NUMBER	DATE SENT TO GIS	GIS INFORMATION	DATE RECEIVED	NAME

Rev. A 14-10-21 GENERAL PLAN LAYOUT A-X
NOTE: No construction work to commence until land and servitude acquisitions have been completed.
Acquisitions completed.

Date: _____ Engineer: _____

UNDERGROUND SERVICES CHECKED -

SERVICE	DATE	SIGNATURE
S.W DRAINS		
SEWERS		
WATERMANS		
TELEKOM CABLES		
ELECTRIC CABLES		
S.A.R CABLES		
E.S.C CABLES		
OIL PIPE LINE		

NOTE: Only underground services affected by new construction are shown. Care must be taken during excavations for road foundations, trenches etc., to avoid damage to underground services such as sewers, drains, cables, watermains and connections. Wherever possible these must be located before work begins.

Contract No. _____
Project No. _____
Planning Unit _____
Ward No. _____

Project Title
**ETHEKWINI WATER & SANITATION
PROVISION OF WATER & SANITATION
SERVICES TO INFORMAL SETTLEMENTS
IN ETHEKWINI - PHASE 3**

Drawing Title
**INHLANGANISO PRIMARY SCHOOL
EMIS NO. 500763984 NEW
ABLUTION FACILITIES**