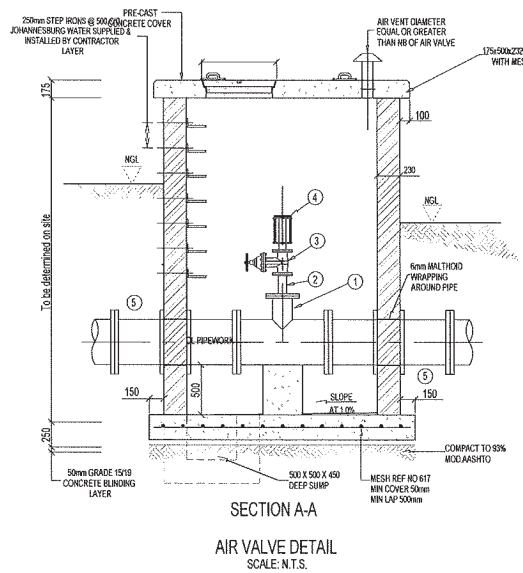
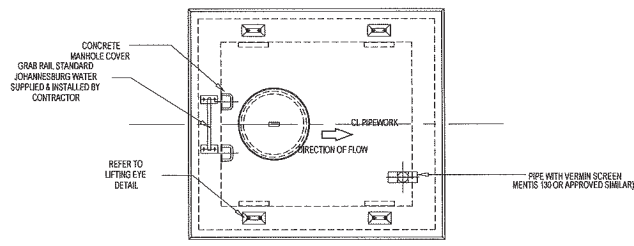


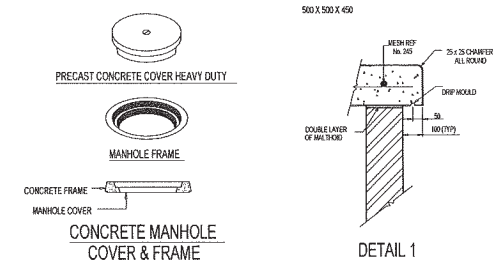
PLAN



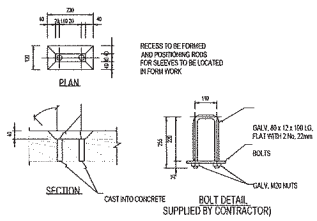
SECTION A-A
AIR VALVE DETAIL
SCALE: N.T.S.



COVER SLAB PLAN



CONCRETE MANHOLE COVER & FRAME



DETAILS OF LIFTING EYE

AIR VALVE ASSEMBLY - FITTINGS LIST			
ITEM NO.	DESCRIPTION	QUANTITY	SKETCH
1	FLANGED UNEQUAL TEE AIR ACCUMULATOR FLANGES DRILLED TO SANS 1123-1900/3	1	
2	FLANGES RISER PIECE, ONE END FLANGED TO SUIT AIR VALVE, OTHER END FLANGED TO SUIT PIPE TEE, FLANGES DRILLED TO SANS 1123-1900/3	1	
3	GATE VALVE FLANGED, PN 16, BSY TO JOHANNESBURG WATER SPECIFICATIONS	1	
4	AIR VALVE FLANGED, PN 16	1	
5	BOTH END WITH TWO PUDDLE FLANGES 115mm FROM END DRILLED TO SANS 1123-1900/3	2	

- GENERAL NOTES:
- ALL BRICKWORK TO BE PLASTERED EXTERNALLY AND INTERNALLY TO ENSURE WATERTIGHT CHAMBER. USE ENGINEERING BRICKS.
 - CONCRETE FOR THE BASE AND ROOF SLAB TO BE GRADE 25/18 COVER TO REINFORCEMENT + 30mm.
 - ALL FITTINGS TO BE PAINTED WITH COPON 63088 EPOXY PAINT. AFTER INSTALLATION 5mm BSFW REPAIR WRAP COATING.
 - ALL FLANGES TO TABLE 1600 OF SANS 1123.
 - PIPES TO BE WRAPPED WITH 6mm THICK MALTHOID WRAPPING THROUGH WALLS.
 - CHAMBER DIMENSION AND DEPTH ARE SUBJECT TO CHANGE UPON CONFIRMATION OF THE EXISTING PIPE LOCATION AND DEPTH.
 - FITTINGS ARE SUBJECT TO CHANGE UPON CONFIRMATION OF THE EXISTING PIPE MATERIALS.
 - EVERY CHAMBER MUST HAVE A 100mm DIAMETER VENT PIPE WITH MESH/STRAIPLER.
 - PEDSTALS TO BE PROVIDED AS DIRECTED BY THE ENGINEER AT SITE.
 - VALVE KEY HOLES TO BE PROVIDED IN THE ROOF ABOVE EVERY VALVE OR AS DIRECTED.
 - DEPTH OF CHAMBERS TO BE DETERMINED ON SITE.
 - ENGINEERING BRICKS WITH BRICKWORK EXERT 3rd COURSE FOR ALL CHAMBERS.
 - ROOF SLAB TO BE MADE OF PRECAST PANELS.
 - PROVIDE MANHOLE OPENING AND RC CONCRETE UID.

FOR TENDERING PURPOSE ONLY

DESIGNED	<i>M. G. G.</i>
DRAWN	<i>M. G. G.</i>
CHECKED	<i>M. G. G.</i>
APPROVED	<i>M. G. G.</i>



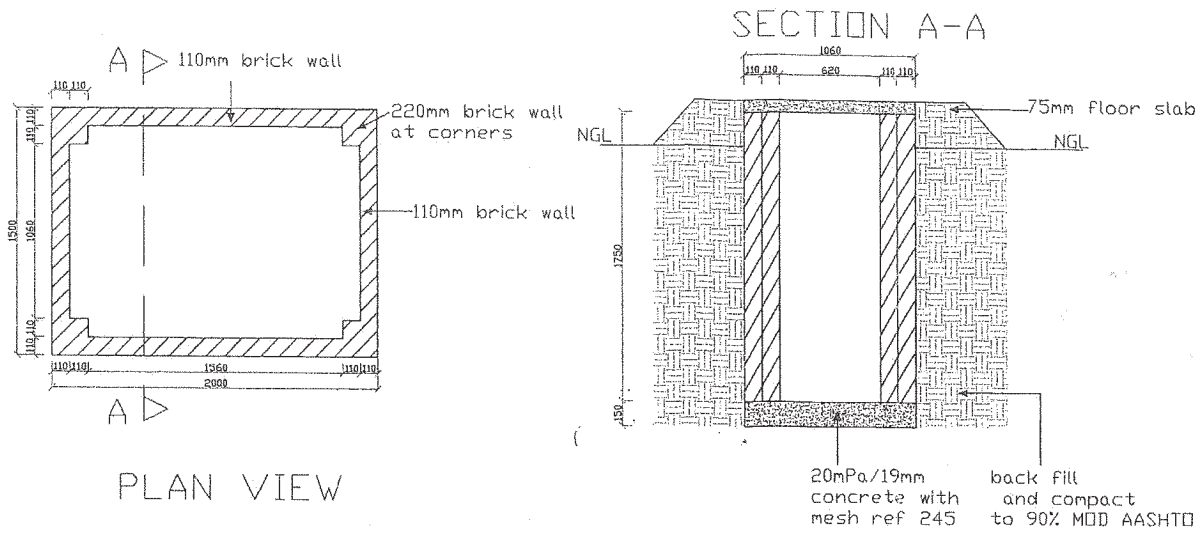
17 HARRISON STREET
MARSHALLTOWN
2107
TEL: (011) 688-1400
FAX: (011) 688-1529



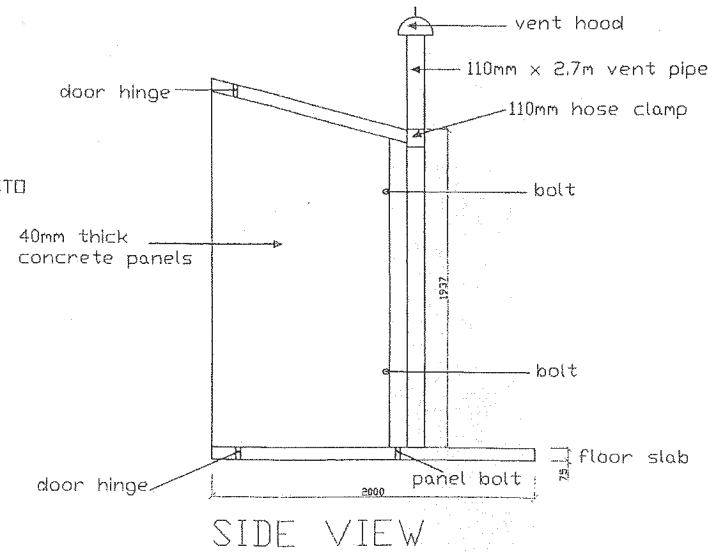
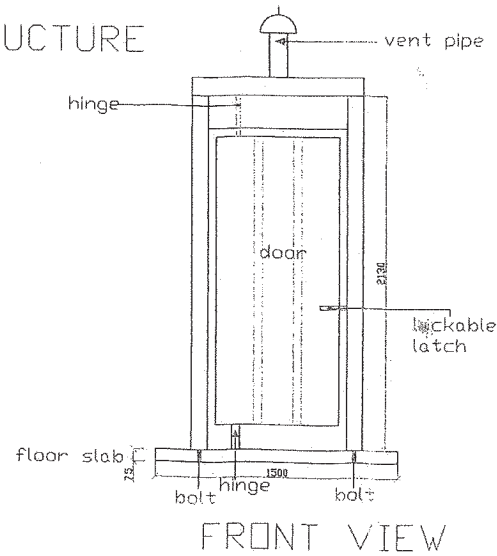
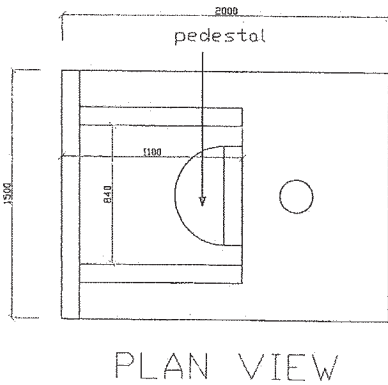
TYPICAL STANDARD DETAIL FOR AN AIR VALVE CHAMBER
DETAILED PLAN

SCALE	AMENDMENTS	
	NO.	DESCRIPTION
1:1		

DRAWING No. JW100-DET18-W01		
UR		
PROJECT	DATE	REV.
A1	SHEET	1 OF 1



TOP STRUCTURE



CONSULTING ENGINEERS CAPRA - ENGINEERING SERVICES UNIT 86 MARVELL STREET, BRIDGE HOUSE MARSHALLTOWN JOHANNESBURG	DESIGNED BY P.M. DATE: 09/2001	CHECKED BY K. Rogie DATE: NOV 2001	APPROVED BY M. G. van R. DATE: 2013 DEC 04
---	---	---	---



Johannesburg Water

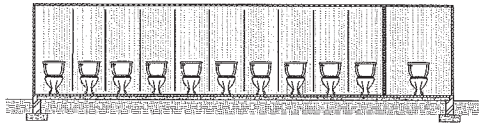
17 HARRISON STREET
MARSHALLTOWN
2107
TEL: (011) 688-1400
FAX: (011) 688-1529

Joburg

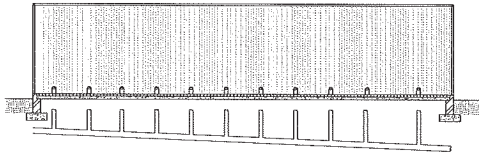
STANDARD DRAWINGS
VIP TOILET

SCALE	AMENDMENTS		
REV.	DESCRIPTION	DATE	

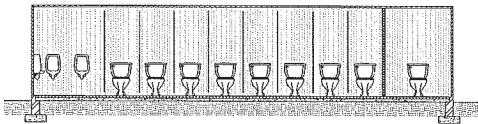
DRAWING No. JW100-DET16-W01			
UR			
PROJECT:	DESIGN:	REV:	
A1	SHEET	1	OF 1
DATE: 2013 DEC 04			



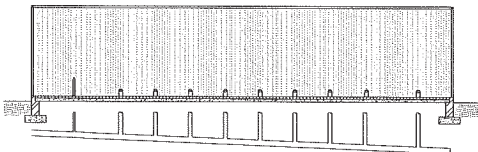
SECTION BB: FEMALE TOILETS



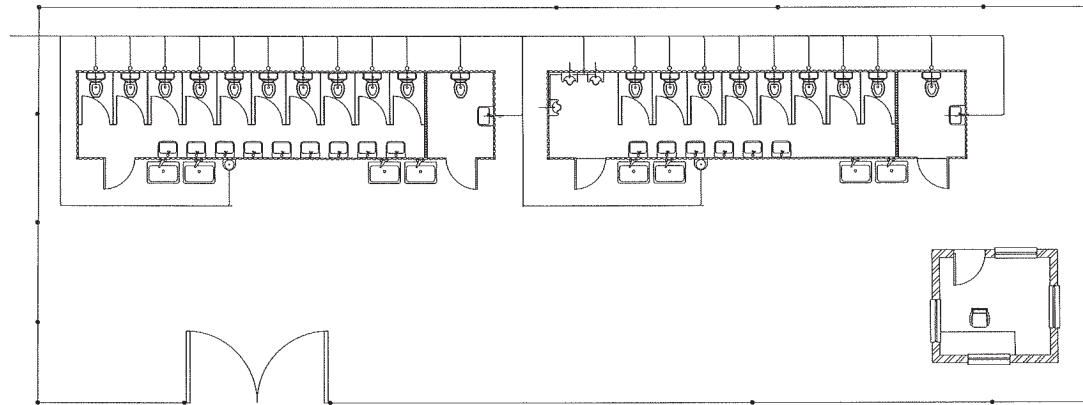
PLUMBING ELEVATION



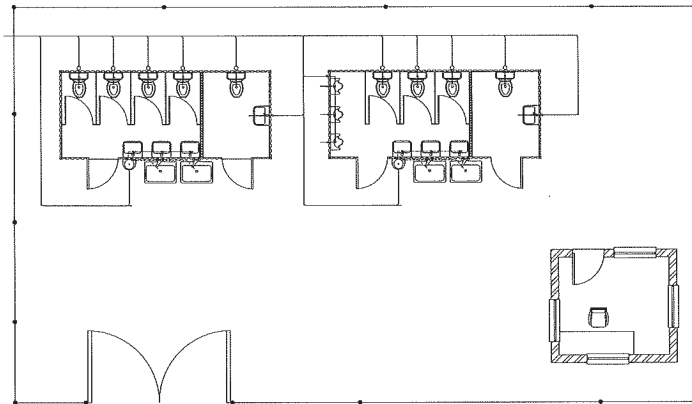
SECTION BB: MALE TOILETS



PLUMBING ELEVATION



FLOOR PLAN: MALE AND FEMALE TOILETS 12 X 2.4m
SCALE 1:100



FLOOR PLAN: MALE AND FEMALE TOILETS 6 X 2.4m
SCALE 1:100

CONSULTING ENGINEERS
SANCZ - ENGINEERING SERVICES UNIT
60 MAHINI ST, 7TH FLOOR, SWISS HOUSE
MARSHALLTOWN JOHANNESBURG

DESIGNED	PM	NOV 2011
DRAWN	Alag 1507	NOV 2011
CHECKED		
APPROVED BY	W. C. ...	DATE: 2013 04 04



17 HARRISON STREET
MARSHALLTOWN
2107
TEL: (011) 688-1400
FAX: (011) 688-1529

Joburg

STANDARD DRAWINGS
ABLUTION BLOCKS - DESIGN DETAILS & LAYOUT

SCALE	AMENDMENTS		
REV	DESCRIPTION	DATE	

DRAWING No. JW100-DET17-W01

UR		
PROJECTED	DESIGNED BY	REV.
A1	SHEET 1	OF 1
DATE		