



DEPARTMENT
TECHNICAL SERVICES
DIRECTORATE

Road Infrastructure Management

DIVISION

Coastal, Stormwater, and Catchment Management

PROCUREMENT DOCUMENT : Infrastructure (GCC 2015)

Documents can be obtained, free of charge, in electronic format, from the [National Treasury's eTenders website](#) or the [eThekwini Municipality website](#)

Contract No: 35389-1N

Contract Title: Herrwood Drive, Umhlanga, Ward 35: Stormwater Attenuation Pond

Estimated CIBD: Grade: 4 Class: CE

CLARIFICATION MEETING AND QUERIES

Clarification Meeting: [Compulsory Clarification Meeting. Questions and answers from the clarification meeting will be consolidated and posted on eTenders/Municipal website for the benefit of all tenderers by 09 June 2026.](#)

Meeting Location: 7 Sandringham Court, Umhlanga, Ward 35 on Wednesday, 02 June 2026
Date, Time: at 10:00am

Queries can be addressed to: [Name: Karina Arumugam](#)
The Employer's Agent's: [Tel: 031 311 7373](#)
Representative: [eMail: karina.arumugam@durban.gov.za](mailto:karina.arumugam@durban.gov.za)

TENDER SUBMISSION

Tender Submission: The Tender Offer (hard copy) shall be delivered to:

Delivery location: [The Tender Box in the foyer of the Municipal Building, 166 KE Masinga Road, Durban](#)

Closing Date/ Time: [12/06/2026](#) at 11h00

JDE Submission: An **electronic submission** is also to be made via the eThekwini Municipality **JDE System (SSS Module)**

JDE Queries Contact: Lindo Dlamini: Tel: 031-322-7133 / 031-322-7153
Email: supplier.selfservice@durban.gov.za

Tender Offers submitted via any means other than that stated in the Tender Data will be deemed invalid

Issued by:

ETHEKWINI MUNICIPALITY

Deputy Head: Coastal, Stormwater, and Catchment Management

Date of Issue: 13/05/2026

Version: 01/12/2025

FOR OFFICIAL USE ONLY

Tenderer Name:			VAT Registered: Yes No
	Price (excl)	VAT	Price (incl)
Submitted:	R	R	R
Corrected:	R	R	R

INDEX to PROCUREMENT DOCUMENT

TENDER PART	Part T1	TENDERING PROCEDURES		Page
		T1.1 Tender Notice and Invitation to Tender		
		T1.1.1 Tender Notice and Invitation to Tender		2
		T1.1.2 Notes to Tenderers		5
		T1.1.3 Information Regarding the eThekwini JDE System		3
		T1.2 Tender Data		
	T1.2.1 Standard Conditions of Tender		7	
	T1.2.2 Tender Data (<i>applicable to this tender</i>)		16	
	T1.2.3 Additional Conditions of Tender		25	
	Part T2	RETURNABLE DOCUMENTS		Page
T2.1 List of Returnable Documents			29	
T2.2 Returnable Schedules, Forms and Certificates			31	
CONTRACT PART	Part C1	AGREEMENT AND CONTRACT DATA		Page
		C1.1 Form of Offer and Acceptance		
		C1.1.1 Offer		63
		C1.1.2 Acceptance		64
		C1.1.3 Schedule of Deviations		65
		C1.2 Contract Data		
		C1.2.1 Standard Conditions of Contract.....		66
	C1.2.2 Contract Data.....		66	
	C1.2.3 Additional Conditions of Contract		72	
	Part C2	PRICING DATA		Page
		C2.1 Pricing Assumptions / Instructions		74
		C2.2 Bill of Quantities (separate page numbering system).....		76
	Part C3	SCOPE OF WORK		Page
		C3.1 Project Description and Scope of Contract		78
		C3.2 Project Specifications		82
		C3.3 Standard Specifications		92
		C3.4 Particular Specifications		95
		C3.5 Contract and Standard Drawings		96
		C3.6 Annexures		97
	Part C4	SITE INFORMATION		Page
C4.1 Locality Plan			98	
C4.2 Conditions on Site			98	
C4.3 Test Results			98	

PART T1: TENDERING PROCEDURES

T1.1.1: TENDER NOTICE AND INVITATION TO TENDER

Tenders are hereby invited for the works to [Herrwood Drive, Umhlanga, Ward 35: Stormwater Attenuation Pond](#)

Subject	Description	Tender Data
Employer	The Employer is the eThekweni Municipality as represented by: Deputy Head: Coastal, Stormwater, and Catchment Management	C.1.1.1
Tender Documents	Documentation is to be downloaded from the National Treasury's eTenders website or the eThekweni Municipality Website : <ul style="list-style-type: none"> • https://www.etenders.gov.za/ • https://www.durban.gov.za/pages/business/procurement 	C.1.2
CIDB Eligibility	It is <u>estimated</u> that Tenderers should have a CIDB contractor grading designation of 4 CE (or higher).	C.2.1.2
Meeting Type	Compulsory Clarification Meeting . Questions and answers from the clarification meeting will be consolidated and posted on eTenders/Municipal website for the benefit of all tenderers by 09 June 2026 .	C.2.7
Meeting Details	7 Sandringham Court, Umhlanga, Ward 35 on Wednesday, 02 June 2026 at 10:00am	C.2.7
Seek Clarification	Queries relating to these documents are to be addressed to the Employer's Agent's Representative whose contact details are: Name: Karina Arumugam Tel: 031 311 7373 eMail: karina.arumugam@durban.gov.za	C.1.4
Submitting a Tender Offer	The Tender Offer (hard copy) shall be delivered to: The Tender Box in the foyer of the Municipal Building, 166 KE Masinga Road, Durban An electronic submission , via the eThekweni Municipality JDE System (SSS Module) , is also to be made. Refer to Part T1.1.2 and Tender Data: C.2.13. Notwithstanding the electronic submission , a tender offer will only be deemed valid if the "hard copy" submission has been made.	C.2.13
Closing Time	The Tender Offer (hard copy) shall be delivered, and the electronic submission completed, both on or before 12/06/2026 , at or before 11h00 .	C.2.15
Evaluation of Tender Offers	The 80/20 Price Preference Point System, as specified in the SCM Policy: Section 52: Preferential Procurement will be applied in the evaluation of tenders. Tender Data: C.3.11: Evaluation of Tender Offers details the awarding of Preference Points, and other related evaluation requirements.	C.3.11

Requirements for sealing, addressing, delivery, opening, and assessment of tenders are stated in the Tender Data

CIDB B.U.I.L.D. Programme Standards

Standard for Indirect Targeting for Enterprise Development through Construction Works Contracts	Not Applicable
Standard for Developing Skills through Infrastructure Contracts	Not Applicable

T1.1.2: NOTES TO TENDERERS

These “Notes to Tenderers” are intended to provide guidance regarding tendering obligations and requirements.

Compliance requirements are stated in the relevant parts of the Tender Data: T1.2.

GENERAL

- 1) The words BID, TENDER, QUOTATION, and REQUEST FOR QUOTATION (RFQ) are interchangeable throughout this procurement document.
- 2) **JDE-SSS Module** refers to the Supplier Self Service module on the eThekwini Municipality JDE System. Refer to Part T1.1.2.

eThekwini Supply Chain Management Policy (SCMP)

The requirements as stated in the Employer’s SCM Policy include, but are not limited to, the following:

1) Section 14(4): ETM Supplier Database

The eThekwini Supply Chain Management Policy requires suppliers/ service providers/ contractors to be registered on the **eThekwini Municipality’s Supplier Portal**.

In the event of the Tenderer not being registered on the eThekwini Municipality’s Supplier Portal, the Tenderer must register on the internet at www.durban.gov.za by following these links:

- Business
 - Supply Chain Management (SCM)
 - Accredited Supplier and Contractor Database.

The following is to be noted:

- The information for registration as in the possession of the eThekwini Municipality will apply.
- It is the Tenderer’s responsibility to ensure that the details submitted to the Municipality are correct.
- Tenderers are to register prior to the submission of tenders.

2) Section 20(1)(d)(i): Audited Financial Statements

Audited Financial Statements are required to be submitted if the value of the tender offer exceeds R10 million (incl. VAT). See **Returnable Form: MBD 5** and **Returnable Form: Contracts awarded by Organs of State** in the past 5 years.

3) Section 20(1)(d)(iii): Contracts Awarded during the past 5 Years

Tenderers are to include with their submission a listing of any contracts awarded to the Tenderer during the past 5 years, including particulars of any material non-compliance or dispute concerning the execution of the contracts. Tenderers are referred to **Returnable Form: MBD 5**

4) Section 13.1(b)(vii), 20(1)(d)(ii), 28.2(d), 29.6(a), 38.1(d), and 29.14: Municipal Rates and Taxes (Fees)

Tenderers are to refer to **Returnable Form: Declaration of Municipal Fees** to certify that they have no undisputed commitments for municipal services towards any municipality. Prior to an award, a Tenderer’s municipal rates and taxes cannot be in arrears. Should a Tenderer be in arrears with respect to municipal services and has formalised an agreement with the respective municipality to offset the arrears, the agreement must be in place at time of tender closing.

5) Section 21.2: Tender Validity

Tenders are to remain valid for twelve (12) months after the expiry of the **original tender validity period** as stated in the **Tender Data**, unless the Municipality is notified, in writing, of anything to the contrary.

The eThekweni Municipality reserves the right to request confirmation from Tenderers of tender validity at any time during the twelve (12) month period.

6) Section 28(2)(d), Section 28(2)(h) and Section use 29(12): Certifications and Registrations

CIDB Registration and Status, B-BBEE Certificates, and Tax Compliance Status PINs must be valid at the time of tender closing, and before final award.

The Tenderer's Tax Compliance Status, CIDB Registration and Status (if required), and B-BBEE Level Status (if required), will be verified using the National Treasury Central Supplier Database (CSD). Tenderers are referred to **Returnable Form: Compulsory Enterprise Questionnaire**.

It is the Tenderer's responsibility to ensure that their data on the CSD is kept updated and correctly reflects the status of the tendering entity.

7) Section 28(2)(f), and 52.5.13: Joint Ventures (JV)

Each party of a JV must submit separate Tax Compliance Status PINs. Unless otherwise stated, the requirements for a single entity submission in terms of documentation requirements, will apply to each member of a JV making a submission.

As proof that a JV has been formalised, or that the parties to the JV agree to formalise the JV should they be successful in being recommended for the award of this tender, Tenderers are referred to **Returnable Form: Joint Venture Agreements**.

8) Section 49.1.2: Complaints and Objections (Appeals)

A non-refundable tariff, as per the approved Council tariffs, is payable by the Complainant to the Municipality. Proof of the payment of the Fee must be attached to the complaint.

CIDB**Regulation 25(8)**

- 9) It should be noted that this contract, unless otherwise stated, is not part of a **Targeted Development Programme (TDP)**. The CIDB provisions in relation to a Contractor's **Potentially Emerging (PE) status** do not apply.

Tenderers are referred to **CIDB Inform Practice Note #32: "Application of the Potentially Emerging (PE) Status"**.

B.U.I.L.D. Programme

- 10) A programme to accelerate transformation in the construction industry, increase the capacity of the construction industry to deliver infrastructure and support the growth of emerging contractors, was launched on 14 March 2024 by the Deputy Minister of Public Works and Infrastructure and the Construction Industry Development Board.

Details of the B.U.I.L.D. Programme were published in a Government Gazette in 2020 (GG 43726) and B.U.I.L.D. has gradually been phased in at various levels of government and the private sector. The CIDB, a public entity with the mandate to promote improved performance in construction, oversees the programme and manages the B.U.I.L.D Fund.

The B.U.I.L.D programme determines that public sector entities which implement construction projects, that meet certain minimum requirements, must include developmental goals to the deliverables defined in the tenders. If applicable, Contractors are required to include these goals in the plans and pricing when they submit their tender bids.

5) Tender documentation

By accessing the **JDE System** (using <https://rfq.durban.gov.za/>) and viewing any available Tenders, prospective Service Providers will be able to download the relevant Tender documentation.

The Tender documentation consists of the **TENDER** and **CONTRACT Parts**, as described in the INDEX, and will include any drawings and other information (if applicable). Referred to, or included in the documentation, are the **Standard Conditions of Tender (and associated Tender Data)**, and the **Conditions of Contract (and associated Contract Data)** which will govern the tendering and contract processes respectively.

6) Submission of tender offers

Reference is to be made to the **Tender Data: C.2.13** that specifies compliance requirements.

Should the **Tender Offer** be required in “**hard copy**” format, the submission is to be delivered to the Delivery Location as stated in the **Tender Data**.

In addition to the above, **Tender Offers are also to be SUBMITTED ELECTRONICALLY** (uploaded) on the eThekweni Municipality JDE System (Supplier Self Service (JDE-SSS) Module). Notwithstanding the **electronic submission**, a tender offer will only be deemed valid if the “hard copy” submission has been made. The “hard copy” submission will be deemed to be the ruling version.

Bidders are responsible for resolving all access rights and submission queries on the JDE System before the tender closing date/ time, as stated in the **Tender Data: C.2.15**.

7) Viewing the Tender opening schedule

Users on the **JDE System** will be able to view the **Tender Opening Schedule** for each closed Tender. The tender opening schedule will also be made available on the eThekweni Municipal website at URL: <https://www.durban.gov.za/pages/business/publication-of-received-bids>

PART T1: TENDERING PROCEDURES

T1.2: TENDER DATA

T1.2.1 STANDARD CONDITIONS OF TENDER

The conditions of tender are the **Standard Conditions of Tender** as contained in **Annex C** of the CIDB Standard for Uniformity in Construction Procurement as published in Government Gazette No 42622, Board Notice 423 of 8 August 2019, as duplicated below.

The Standard Conditions of Tender make several references to the **Tender Data** for details that apply specifically to this tender. The **Tender Data** (T1.2.2) shall have precedence in the interpretation of any ambiguity or inconsistency between it and the Standard Conditions of Tender.

Annex C

Standard Conditions of Tender

<p>C.1</p> <p>C.1.1</p> <p>C.1.1.1</p> <p>C.1.1.2</p>	<p>General</p> <p>Actions</p> <p>The employer and each tenderer submitting a tender offer shall comply with these conditions of tender. In their dealings with each other, they shall discharge their duties and obligations as set out in C.2 and C.3, timeously and with integrity, and behave equitably, honestly and transparently, comply with all legal obligations and not engage in anticompetitive practices.</p> <p>The employer and the tenderer and all their agents and employees involved in the tender process shall avoid conflicts of interest and where a conflict of interest is perceived or known, declare any such conflict of interest, indicating the nature of such conflict. Tenderers shall declare any potential conflict of interest in their tender submissions. Employees, agents and advisors of the employer shall declare any conflict of interest to whoever is responsible for overseeing the procurement process at the start of any deliberations relating to the procurement process or as soon as they become aware of such conflict and abstain from any decisions where such conflict exists or recuse themselves from the procurement process, as appropriate.</p> <p><i>Note:</i> 1) A conflict of interest may arise due to a conflict of roles which might provide an incentive for improper acts in some circumstances. A conflict of interest can create an appearance of impropriety that can undermine confidence in the ability of that person to act properly in his or her position even if no improper acts result.</p>	<p>2) Conflicts of interest in respect of those engaged in the procurement process include direct, indirect or family interests in the tender or outcome of the procurement process and any personal bias, inclination, obligation, allegiance or loyalty which would in any way affect any decisions taken.</p> <p>C.1.1.3 The employer shall not seek, and a tenderer shall not submit a tender, without having a firm intention and the capacity to proceed with the contract.</p> <p>C.1.2 Tender Documents</p> <p>The documents issued by the employer for the purpose of a tender offer are listed in the Tender Data.</p> <p>C.1.3 Interpretation</p> <p>C.1.3.1 The Tender Data and additional requirements contained in the tender schedules that are included in the returnable documents are deemed to be part of these conditions of tender.</p> <p>C.1.3.2 These conditions of tender, the Tender Data and tender schedules which are required for tender evaluation purposes, shall form part of any contract arising from the invitation to tender.</p>
---	---	--

<p>C.1.3.3 For the purposes of these conditions of tender, the following definitions apply:</p> <p>a) conflict of interest means any situation in which:</p> <p>i) someone in a position of trust has competing professional or personal interests which make it difficult to fulfil his or her duties impartially;</p> <p>ii) an individual or tenderer is in a position to exploit a professional or official capacity in some way for their personal or corporate benefit; or</p> <p>iii) incompatibility or contradictory interests exist between an employee and the tenderer who employs that employee.</p> <p>b) comparative offer means the price after the factors of a non-firm price and all unconditional discounts it can be utilised to have been taken into consideration;</p> <p>c) corrupt practice means the offering, giving, receiving or soliciting of anything of value to influence the action of the employer or his staff or agents in the tender process;</p> <p>d) fraudulent practice means the misrepresentation of the facts in order to influence the tender process or the award of a contract arising from a tender offer to the detriment of the employer, including collusive practices intended to establish prices at artificial levels;</p>	<p>c) no acceptable tenders are received;</p> <p>d) there is a material irregularity in the tender process.</p>
<p>C.1.4 Communication and employer's agent</p>	<p>C.1.5.2 The decision to cancel a tender invitation must be published in the same manner in which the <i>original</i> tender invitation was advertised.</p>
<p>Each communication between the employer and a tenderer shall be to or from the employer's agent only, and in a form that can be readily read, copied and recorded. Communications shall be in the English language. The employer shall not take any responsibility for non-receipt of communications from or by a tenderer. The name and contact details of the employer's agent are stated in the Tender Data.</p>	<p>C.1.5.3 An employer may only with the prior approval of the relevant treasury cancel a tender invitation for the second time.</p>
<p>C.1.5 Cancellation and Re-Invitation of Tenders</p>	<p>C.1.6 Procurement procedures</p>
<p>C.1.5.1 An employer may, prior to the award of the tender, cancel a tender if-</p> <p>a) due to changed circumstances, there is no longer a need for the engineering and construction works specified in the invitation;</p> <p>b) funds are no longer available to cover the total envisaged expenditure;</p>	<p>C.1.6.1 General</p> <p>Unless otherwise stated in the Tender Data, a contract will, subject to C.3.13, be concluded with the tenderer who in terms of C.3.11 is the highest ranked or the tenderer scoring the highest number of tender evaluation points, as relevant, based on the tender submissions that are received at the closing time for tenders.</p>
	<p>C.1.6.2 Competitive negotiation procedure</p>
	<p>C.1.6.2.1 Where the Tender Data require that the competitive negotiation procedure is to be followed, tenderers shall submit tender offers in response to the proposed contract in the first round of submissions. Notwithstanding the requirements of C.3.4, the employer shall announce only the names of the tenderers who make a submission. The requirements of C.8 relating to the material deviations or qualifications which affect the competitive position of tenderers shall not apply.</p>
	<p>C.1.6.2.2 All responsive tenderers or at least a minimum of not less than three responsive tenderers that are highest ranked in terms of the evaluation criteria stated in the Tender Data shall be invited to enter into competitive negotiations based on the principle of equal treatment, keeping confidential the proposed solutions and associated information.</p>
	<p>Notwithstanding the provisions of C.2.17, the employer may request that tenders be clarified, specified and fine-tuned in order to improve a tenderer's competitive position provided that such clarification, specification, fine-tuning or additional information does not alter any fundamental aspects of the offers or impose substantial new requirements which restrict or distort competition or have a discriminatory effect.</p>

C.1.6.2.3 At the conclusion of each round of negotiations, tenderers shall be invited by the employer to revise their tender offer based on the same evaluation criteria, with or without adjusted weightings. Tenderers shall be advised when they are to submit their best and final offer.

C.1.6.2.4 The contract shall be awarded in accordance with the provisions of C.3.11 and C.3.13 after tenderers have been requested to submit their best and final offer.

C.1.6.3 Proposal procedure using the two stage-system

C.1.6.3.1 Option 1

Tenderers shall in the first stage submit technical proposals and, if required, cost parameters around which a contract may be negotiated. The employer shall evaluate each responsive submission in terms of the method of evaluation stated in the **Tender Data**, and in the second stage negotiate a contract with the tenderer scoring the highest number of evaluation points and award the contract in terms of these conditions of tender.

C.1.6.3.2 Option 2

C.1.6.3.2.1 Tenderers shall submit in the first stage only technical proposals. The employer shall invite all responsive tenderers to submit tender offers in the second stage, following the issuing of procurement documents.

C.1.6.3.2.2 The employer shall evaluate tenders received during the second stage, in terms of the method of evaluation stated in the **Tender Data**, and award the contract in terms of these conditions of tender.

C.2 Tenderer’s obligations

C.2.1 Eligibility

C.2.1.1 Submit a tender offer only if the tenderer satisfies the criteria stated in the **Tender Data** and the tenderer, or any of his principals, is not under any restriction to do business with employer.

C.2.1.2 Notify the employer of any proposed material change in the capabilities or formation of the tendering entity (or both) or any other criteria which formed part of the qualifying requirements used by the employer as the basis in a prior process to invite the tenderer to

submit a tender offer and obtain the employer’s written approval to do so prior to the closing time for tenders.

C.2.2 Cost of tendering

C.2.2.1 Accept that, unless otherwise stated in the **Tender Data**, the employer will not compensate the tenderer for any costs incurred in the preparation and submission of a tender offer, including the costs of any testing necessary to demonstrate that aspects of the offer complies with requirements.

C.2.2.2 The cost of the tender documents charged by the employer shall be limited to the actual cost incurred by the employer for printing the documents. Employers must attempt to make available the tender documents on its website so as not to incur any costs pertaining to the printing of the tender documents.

C.2.3 Check documents

Check the tender documents on receipt for completeness and notify the employer of any discrepancy or omission.

C.2.4 Confidentiality and copyright of documents

Treat as confidential all matters arising in connection with the tender. Use and copy the documents issued by the employer only for the purpose of preparing and submitting a tender offer in response to the invitation.

C.2.5 Reference documents

Obtain, as necessary for submitting a tender offer, copies of the latest versions of standards, specifications, conditions of contract and other publications, which are not attached but which are incorporated into the tender documents by reference.

C.2.6 Acknowledge addenda

Acknowledge receipt of addenda to the tender documents, which the employer may issue, and if necessary apply for an extension to the closing time stated in the **Tender Data**, in order to take the addenda into account.

C.2.7 Clarification meeting

Attend, where required, a clarification meeting at which tenderers may familiarize themselves

<p>with aspects of the proposed work, services or supply and raise questions. Details of the meeting(s) are stated in the Tender Data.</p>	<p>C.2.12 Alternative tender offers</p>
<p>C.2.8 Seek clarification</p> <p>Request clarification of the tender documents, if necessary, by notifying the employer at least five (5) working days before the closing time stated in the Tender Data.</p>	<p>C.2.12.1 Unless otherwise stated in the Tender Data, submit alternative tender offers only if a main tender offer, strictly in accordance with all the requirements of the tender documents, is also submitted as well as a schedule that compares the requirements of the tender documents with the alternative requirements that are proposed.</p>
<p>C.2.9 Insurance</p> <p>Be aware that the extent of insurance to be provided by the employer (if any) might not be for the full cover required in terms of the conditions of contract identified in the Contract Data. The tenderer is advised to seek qualified advice regarding insurance.</p>	<p>C.2.12.2 Accept that an alternative tender offer must be based only on the criteria stated in the Tender Data or criteria otherwise acceptable to the employer.</p> <p>C.2.12.3 An alternative tender offer must only be considered if the main tender offer is the winning tender.</p>
<p>C.2.10 Pricing the tender offer</p>	<p>C.2.13 Submitting a tender offer</p>
<p>C.2.10.1 Include in the rates, prices, and the tendered total of the prices (if any) all duties, taxes except Value Added Tax (VAT), and other levies payable by the successful tenderer, such duties, taxes and levies being those applicable fourteen (14) days before the closing time stated in the Tender Data.</p>	<p>C.2.13.1 Submit one tender offer only, either as a single tendering entity or as a member in a joint venture to provide the whole of the works identified in the Contract Data and described in the scope of works, unless stated otherwise in the Tender Data.</p>
<p>C.2.10.2 Show VAT payable by the employer separately as an addition to the tendered total of the prices.</p>	<p>C.2.13.2 Return all returnable documents to the employer after completing them in their entirety, either electronically (if they were issued in electronic format) or by writing legibly in non-erasable ink.</p>
<p>C.2.10.3 Provide rates and prices that are fixed for the duration of the contract and not subject to adjustment except as provided for in the conditions of contract identified in the Contract Data.</p>	<p>C.2.13.3 Submit the parts of the tender offer communicated on paper as an original plus the number of copies stated in the Tender Data, with an English translation of any documentation in a language other than English, and the parts communicated electronically in the same format as they were issued by the employer.</p>
<p>C.2.10.4 State the rates and prices in Rand unless instructed otherwise in the Tender Data. The conditions of contract identified in the Contract Data may provide for part payment in other currencies.</p>	<p>C.2.13.4 Sign the original and all copies of the tender offer where required in terms of the Tender Data. The employer will hold all authorized signatories liable on behalf of the tenderer. Signatories for tenderers proposing to contract as joint ventures shall state which of the signatories is the lead partner whom the employer shall hold liable for the purpose of the tender offer.</p>
<p>C.2.11 Alterations to documents</p> <p>Do not make any alterations or additions to the tender documents, except to comply with instructions issued by the employer, or necessary to correct errors made by the tenderer. All signatories to the tender offer shall initial all such alterations.</p>	<p>C.2.13.5 Seal the original and each copy of the tender offer as separate packages marking the packages as "ORIGINAL" and "COPY". Each package shall state on the outside the</p>

<p>employer's address and identification details stated in the Tender Data, as well as the tenderer's name and contact address.</p>	<p>C.2.16.1 Hold the tender offer(s) valid for acceptance by the employer at any time during the validity period stated in the Tender Data after the closing time stated in the Tender Data.</p>
<p>C.2.13.6 Where a two-envelope system is required in terms of the Tender Data, place and seal the returnable documents listed in the Tender Data in an envelope marked "financial proposal" and place the remaining returnable documents in an envelope marked "technical proposal". Each envelope shall state on the outside the employer's address and identification details stated in the Tender Data, as well as the tenderer's name and contact address.</p>	<p>C.2.16.2 If requested by the employer, consider extending the validity period stated in the Tender Data for an agreed additional period with or without any conditions attached to such extension.</p>
<p>C.2.13.7 Seal the original tender offer and copy packages together in an outer package that states on the outside only the employer's address and identification details as stated in the Tender Data.</p>	<p>C.2.16.3 Accept that a tender submission that has been submitted to the employer may only be withdrawn or substituted by giving the employer's agent written notice before the closing time for tenders that a tender is to be withdrawn or substituted. If the validity period stated in C.2.16 lapses before the employer evaluating tender, the contractor reserves the right to review the price based on Consumer Price Index (CPI).</p>
<p>C.2.13.8 Accept that the employer will not assume any responsibility for the misplacement or premature opening of the tender offer if the outer package is not sealed and marked as stated.</p>	<p>C.2.16.4 Where a tender submission is to be substituted, a tenderer must submit a substitute tender in accordance with the requirements of C.2.13 with the packages clearly marked as "SUBSTITUTE".</p>
<p>C.2.13.9 Accept that tender offers submitted by facsimile or e-mail will be rejected by the employer, unless stated otherwise in the Tender Data.</p>	<p>C.2.17 Clarification of tender offer after submission</p>
<p>C.2.14 Information and data to be completed in all respects</p> <p>Accept that tender offers, which do not provide all the data or information requested completely and in the form required, may be regarded by the employer as non-responsive.</p>	<p>Provide clarification of a tender offer in response to a request to do so from the employer during the evaluation of tender offers. This may include providing a breakdown of rates or prices and correction of arithmetical errors by the adjustment of certain rates or item prices (or both). No change in the competitive position of tenderers or substance of the tender offer is sought, offered, or permitted.</p>
<p>C.2.15 Closing time</p>	<p><i>Note: Sub-clause C.2.17 does not preclude the negotiation of the final terms of the contract with a preferred tenderer following a competitive selection process, should the Employer elect to do so.</i></p>
<p>C.2.15.1 Ensure that the employer receives the tender offer at the address specified in the Tender Data not later than the closing time stated in the Tender Data. Accept that proof of posting shall not be accepted as proof of delivery.</p>	<p>C.2.18 Provide other material</p>
<p>C.2.15.2 Accept that, if the employer extends the closing time stated in the Tender Data for any reason, the requirements of these conditions of tender apply equally to the extended deadline.</p>	<p>C.2.18.1 Provide, on request by the employer, any other material that has a bearing on the tender offer, the tenderer's commercial position (including notarized joint venture agreements), preferencing arrangements, or samples of materials, considered necessary by the employer for the purpose of a full and fair risk assessment.</p> <p>Should the tenderer not provide the material, or a satisfactory reason as to why it cannot be provided, by the time for submission stated in</p>
<p>C.2.16 Tender offer validity</p>	

<p>the employer's request, the employer may regard the tender offer as non-responsive.</p> <p>C.2.18.2 Dispose of samples of materials provided for evaluation by the employer, where required.</p> <p>C.2.19 Inspections, tests and analysis</p> <p>Provide access during working hours to premises for inspections, tests and analysis as provided for in the Tender Data.</p> <p>C.2.20 Submit securities, bonds and policies</p> <p>If requested, submit for the employer's acceptance before formation of the contract, all securities, bonds, guarantees, policies and certificates of insurance required in terms of the conditions of contract identified in the Contract Data.</p> <p>C.2.21 Check final draft</p> <p>Check the final draft of the contract provided by the employer within the time available for the employer to issue the contract.</p> <p>C.2.22 Return of other tender documents</p> <p>If so instructed by the employer, return all retained tender documents within twenty-eight (28) days after the expiry of the validity period stated in the Tender Data.</p> <p>C.2.23 Certificates</p> <p>Include in the tender submission or provide the employer with any certificates as stated in the Tender Data.</p> <p>C.3 The employer's undertakings</p> <p>C.3.1 Respond to requests from the tenderer</p> <p>C.3.1.1 Unless otherwise stated in the Tender Data, respond to a request for clarification received up to five (5) working days before the tender closing time stated in the Tender Data and notify all tenderers who collected tender documents.</p> <p>C.3.1.2 Consider any request to make a material change in the capabilities or formation of the tendering entity (or both) or any other criteria which formed part of the qualifying requirements used to prequalify a tenderer to submit a tender offer in terms of a previous procurement process and deny any such request if as a consequence:</p>	<p>a) an individual firm, or a joint venture as a whole, or any individual member of the joint venture fails to meet any of the collective or individual qualifying requirements;</p> <p>b) the new partners to a joint venture were not prequalified in the first instance, either as individual firms or as another joint venture; or</p> <p>c) in the opinion of the Employer, acceptance of the material change would compromise the outcome of the prequalification process.</p> <p>C.3.2 Issue Addenda</p> <p>If necessary, issue addenda that may amend or amplify the tender documents to each tenderer during the period from the date that tender documents are available until three (3) working days before the tender closing time stated in the Tender Data. If, as a result a tenderer applies for an extension to the closing time stated in the Tender Data, the Employer may grant such extension and, shall then notify all tenderers who collected tender documents.</p> <p>C.3.3 Return late tender offers</p> <p>Return tender offers received after the closing time stated in the Tender Data, unopened, (unless it is necessary to open a tender submission to obtain a forwarding address), to the tenderer concerned.</p> <p>C.3.4 Opening of tender submissions</p> <p>C.3.4.1 Unless the two-envelope system is to be followed, open valid tender submissions in the presence of tenderers' agents who choose to attend at the time and place stated in the Tender Data. Tender submissions for which acceptable reasons for withdrawal have been submitted will not be opened.</p> <p>C.3.4.2 Announce at the meeting held immediately after the opening of tender submissions, at a venue indicated in the Tender Data, the name of each tenderer whose tender offer is opened and, where applicable, the total of his prices, number of points claimed for its BBBEE status level and time for completion for the main tender offer only.</p> <p>C.3.4.3 Make available the record outlined in C.3.4.2 to all interested persons upon request.</p>
--	---

<p>C.3.5 Two-envelope system</p> <p>C.3.5.1 Where stated in the Tender Data that a two-envelope system is to be followed, open only the technical proposal of valid tenders in the presence of tenderers' agents who choose to attend at the time and place stated in the Tender Data and announce the name of each tenderer whose technical proposal is opened.</p> <p>C.3.5.2 Evaluate functionality of the technical proposals offered by tenderers, then advise tenderers who remain in contention for the award of the contract of the time and place when the financial proposals will be opened. Open only the financial proposals of tenderers, who score in the functionality evaluation more than the minimum number of points for functionality stated in the Tender Data, and announce the score obtained for the technical proposals and the total price and any points claimed on BBEE status level. Return unopened financial proposals to tenderers whose technical proposals failed to achieve the minimum number of points for functionality.</p>	<p>C.3.8.2 A responsive tender is one that conforms to all the terms, conditions, and specifications of the tender documents without material deviation or qualification. A material deviation or qualification is one which, in the Employer's opinion, would:</p> <ol style="list-style-type: none"> detrimentally affect the scope, quality, or performance of the works, services or supply identified in the Scope of Work, significantly change the Employer's or the tenderer's risks and responsibilities under the contract, or affect the competitive position of other tenderers presenting responsive tenders, if it were to be rectified. <p>Reject a non-responsive tender offer and not allow it to be subsequently made responsive by correction or withdrawal of the non-conforming deviation or reservation.</p>
<p>C.3.6 Non-disclosure</p> <p>Not disclose to tenderers, or to any other person not officially concerned with such processes, information relating to the evaluation and comparison of tender offers, the final evaluation price and recommendations for the award of a contract, until after the award of the contract to the successful tenderer.</p>	<p>C.3.9 Arithmetical errors, omissions and discrepancies</p> <p>C.3.9.1 Check responsive tenders for discrepancies between amounts in words and amounts in figures. Where there is a discrepancy between the amounts in figures and the amount in words, the amount in words shall govern.</p> <p>C.3.9.2 Check the highest ranked tender or tenderer with the highest number of tender evaluation points after the evaluation of tender offers in accordance with C.3.11 for:</p> <ol style="list-style-type: none"> the gross misplacement of the decimal point in any unit rate; omissions made in completing the pricing schedule or bills of quantities; or arithmetic errors in: <ol style="list-style-type: none"> line-item totals resulting from the product of a unit rate and a quantity in bills of quantities or schedules of prices; or the summation of the prices.
<p>C.3.7 Grounds for rejection and disqualification</p> <p>Determine whether there has been any effort by a tenderer to influence the processing of tender offers and instantly disqualify a tenderer (and his tender offer) if it is established that he engaged in corrupt or fraudulent practices.</p>	
<p>C.3.8 Test for responsiveness</p> <p>C.3.8.1 Determine, after opening and before detailed evaluation, whether each tender offer properly received:</p> <ol style="list-style-type: none"> complies with the requirements of these Conditions of Tender, has been properly and fully completed and signed, and is responsive to the other requirements of the tender documents. 	<p>C.3.9.3 Notify the tenderer of all errors or omissions that are identified in the tender offer and either confirm the tender offer as tendered or accept the corrected total of prices.</p> <p>C.3.9.4 Where the tenderer elects to confirm the tender offer as tendered, correct the errors as follows:</p> <ol style="list-style-type: none"> If bills of quantities or pricing schedules apply and there is an error in the line-item total resulting from the product of the unit rate and the quantity, the line-item total

shall govern and the rate shall be corrected. Where there is an obviously gross misplacement of the decimal point in the unit rate, the line-item total as quoted shall govern, and the unit rate shall be corrected.

- b) Where there is an error in the total of the prices either as a result of other corrections required by this checking process or in the tenderer's addition of prices, the total of the prices shall govern and the tenderer will be asked to revise selected item prices (and their rates if bills of quantities apply) to achieve the tendered total of the prices.

C.3.10 Clarification of a tender offer

Obtain clarification from a tenderer on any matter that could give rise to ambiguity in a contract arising from the tender offer.

C.3.11 Evaluation of tender offers

The Standard Conditions of Tender standardize the procurement processes, methods and procedures from the time that tenders are invited to the time that a contract is awarded. They are generic in nature and are made project specific through choices that are made in developing the **Tender Data** associated with a specific project.

Conditions of tender are by definition the document that establishes a tenderer’s obligations in submitting a tender and the employer’s undertakings in soliciting and evaluating tender offers. Such conditions establish the rules from the time a tender is advertised to the time that a contract is awarded and require employers to conduct the process of offer and acceptance in terms of a set of standard procedures.

The CIDB Standard Conditions of Tender are based on a procurement system that satisfies the following system requirements:	
Requirement	Qualitative interpretation of goal
Fair	The process of offer and acceptance is conducted impartially without bias, providing simultaneous and timely access to participating parties to the same information.
Equitable	Terms and conditions for performing the work do not unfairly prejudice the interests of the parties.
Transparent	The only grounds for not awarding a contract to a tenderer who satisfies all requirements are restrictions from doing business with the employer, lack of capability or capacity, legal impediments and conflicts of interest.
Competitive	The system provides for appropriate levels of competition to ensure cost effective and best value outcomes.
Cost effective	The processes, procedures and methods are standardized with sufficient flexibility to attain best value outcomes in respect of quality, timing and price, and least resources to effectively manage and control procurement processes.

The activities associated with evaluating tender offers are as follows:

- a) Open and record tender offers received
- b) Determine whether or not tender offers are complete
- c) Determine whether or not tender offers are responsive
- d) Evaluate tender offers
- e) Determine if there are any grounds for disqualification
- f) Determine acceptability of preferred tenderer
- g) Prepare a tender evaluation report
- h) Confirm the recommendation contained in the tender evaluation report .

C.3.11.1 General

The employer must appoint an evaluation panel of not less than three persons conversant with the proposed scope of works to evaluate each responsive tender offer using the tender evaluation methods and associated evaluation criteria and weightings that are specified in the **Tender Data**.

C.3.12 Insurance provided by the employer

If requested by the proposed successful tenderer, submit for the tenderer's information the policies and / or certificates of insurance which the conditions of contract identified in the **Contract Data**, require the employer to provide.

C.3.13 Acceptance of tender offer

Accept the tender offer; if in the opinion of the employer, it does not present any risk and only if the tenderer:

- a) is not under restrictions, or has principals who are under restrictions, preventing participating in the employer's procurement;
- b) can, as necessary and in relation to the proposed contract, demonstrate that he or she possesses the professional and technical qualifications, professional and technical competence, financial resources, equipment and other physical facilities, managerial capability, reliability, experience and reputation, expertise and the personnel, to perform the contract;
- c) has the legal capacity to enter into the contract;
- d) is not; insolvent, in receivership, under Business Rescue as provided for in chapter 6 of the Companies Act No. 2008, bankrupt or being wound up, has his/her affairs administered by a court or a judicial officer, has suspended his/her business activities or is subject to legal proceedings in respect of any of the foregoing;
- e) complies with the legal requirements, if any, stated in the **Tender Data**; and
- f) is able, in the opinion of the employer, to perform the contract free of conflicts of interest.

C.3.14 Prepare contract documents

C.3.14.1 If necessary, revise documents that shall form part of the contract and that were issued by the employer as part of the tender documents to take account of:

- a) addenda issued during the tender period,
- b) inclusion of some of the returnable documents and
- c) other revisions agreed between the employer and the successful tenderer.

C.3.14.2 Complete the schedule of deviations attached to the form of offer and acceptance, if any.

C.3.15 Complete adjudicator's contract

Unless alternative arrangements have been agreed or otherwise provided for in the contract, arrange for both parties to complete formalities for appointing the selected adjudicator at the same time as the main contract is signed.

C.3.16 Registration of the award

An employer must, within twenty-one (21) working days from the date on which a contractor's offer to perform a construction works contract is accepted in writing by the employer, register and publish the award on the cidb Register of Projects.

C.3.17 Provide copies of the contracts

Provide to the successful tenderer the number of copies stated in the **Tender Data** of the signed copy of the contract as soon as possible after completion and signing of the form of offer and acceptance.

C.3.18 Provide written reasons for actions taken

Provide upon request written reasons to tenderers for any action that is taken in applying these conditions of tender but withhold information which is not in the public interest to be divulged, which is considered to prejudice the legitimate commercial interests of tenderers or might prejudice fair competition between tenderers.

T1.2.2 TENDER DATA

Each item of data given below is cross-referenced to the clause in the **Standard Conditions of Tender** to which it mainly applies.

C.1: GENERAL**C.1.1 The employer:**

The Employer for this Contract is the **eThekwini Municipality** as represented by:
Deputy Head: Coastal, Stormwater, and Catchment Management

C.1.2 Tender documents:

The Tender Documents issued by the Employer comprise:

- 1) The Procurement Document comprising of the PARTS as listed in the "INDEX" on page 1.
- 2) **Drawings**, issued separately from this document, or bound in Section C3.4: "Particular Specifications".

Electronically downloaded documentation is obtainable from the National Treasury's **eTenders Website** and/ or the **eThekwini Municipality Website** at URL:

- <https://www.etenders.gov.za/>
- <https://www.durban.gov.za/pages/business/procurement>

Tenderers are to regularly check both web sites for the downloadable documentation.

C.1.4 Communication and employer's agent:

The Employer's Agent is:

Name: Gregory William
Tel: 031 311 7172
eMail: Gregory.williams@durban.gov.za

The Employer's Agent's Representative is:

Name: Karina Arumugam
Tel: 031-311-7172
eMail: karina.arumugam@durban.gov.za

The Tenderer's contact details, as indicated on **Returnable Document "Compulsory Enterprise Questionnaire"**, shall be deemed as the only valid contact details for the Tenderer for use in communications between the Employer's Agent and the Tenderer during tender evaluation.

C.1.6 Procurement procedures:

The following Sections of the **Standard Conditions of Tender** are not applicable to this tender:

- **C.1.6.2: Competitive negotiation procedure**, and
- **C.1.6.3: Proposal procedure using the two-stage system**.

C.2: TENDERER'S OBLIGATIONS

C.2.1 Eligibility:

Entities may only submit one (1) tender offer, either as a single tendering entity or as a partner of a joint venture. Should a tendering entity submit more than one (1) tender, **all** submissions by that tendering entity, including submissions where the entity is a partner of a joint venture, will be deemed not to be eligible.

C.2.1.1 Eligibility: General

A Tenderer will not be eligible to submit a tender if:

- (a) In the event of a Compulsory Clarification Meeting:
 - i) the Tenderer fails to attend the Compulsory Clarification Meeting, or
 - ii) the Tenderer fails to have **Returnable Document “Certificate of Attendance at Clarification Meeting / Site Inspection”** signed by the Employer’s Agent or their representative at the meeting.
- (b) At the time of tender closing, the Tenderer is not registered on the **National Treasury Central Supplier Database (CSD)** and the **eThekweni Municipality Supplier Portal**. In the case of a Joint Venture, this requirement will apply individually to each party in the Joint Venture. Tenderers are to reference **Returnable Document “Compulsory Enterprise Questionnaire”** (section 1.5) and **Returnable Document “CSD Registration Report”**.
- (c) In the case of Joint Venture (JV) submissions, two or more JV entities have common directors/ shareholders or common entities tendering for the same works.
- (d) The following documentation is not completed in full, signed, and returned with the tender submission. **Failure to comply will result in the tender offer being deemed non-responsive.**
 - T2.2.1: Compulsory Enterprise Questionnaire.
 - T2.2.5: MBD 4: Declaration of Interest.
 - T2.2.7: MBD 6.2: Declaration for Local Production and Content.
 - T2.2.8: MBD 8: Declaration of Bidder’s Past SCM Practices.
 - T2.2.9: MBD 9: Certificate of Independent Bid Determination.
 - T2.2.10: Declaration of Municipal Fees
- (e) The certificates listed in the **Tender Data: C.2.23: Certificates** are to be included with the tender submission. **Failure to comply will result in the tender offer being deemed non-responsive.**
 - T2.2.1: SARS Tax Compliance Status - PIN Issued (submitted with the Compulsory Enterprise Questionnaire).
 - T2.2.12: Central Supplier Database (CSD) Report.
 - T2.2.13: CIDB Registration and Status.

C.2.1.2 Eligibility: CIDB

Tenderers are to reference the provisions of **Tender Data: C.2.23 “Certificates**, and **Returnable Document “Verification of CIDB Registration and Status”** with respect to CIDB registration.

Only those Tenderers who are registered (as “Active”) with the CIDB (at time of tender closing), in a contractor grading designation equal to or higher than a contractor grading designation determined in accordance with the sum tendered, or a value determined in accordance with Regulation 25(1B) or 25(7A) of the Construction Industry Development Regulations, for a [Click or tap here to enter text.](#) class of construction work, are eligible to have their tenders evaluated.

Joint ventures are eligible to submit tenders provided that:

- (a) Every member of the joint venture is registered (as “Active”) with the CIDB (at time of tender closing),
- (b) The lead partner has a contractor grading designation in the [Click or tap here to enter text.](#) class of construction work and has a grading designation of not lower than one level below the required grading designation, and
- (c) The combined contractor grading designation calculated in accordance with the Construction Industry Development Regulations (2013) is equal to or higher than a contractor grading designation determined in accordance with the sum tendered for a [Click or tap here to enter text.](#) class of construction work or a value determined in accordance with Regulation 25 (1B) or 25(7A) of the Construction Industry Development Regulations.

C.2.2.2 The cost of the tender documents:

Replace this paragraph with the following:

“Documents are to be downloaded, free of charge, from the **National Treasury’s eTenders website** or the **eThekwini Municipality’s Website.**”

C.2.5 Reference documents:

Tenderers are to obtain their own copies of:

- 1) The **Conditions of Contract** identified in Section C1.2.1.1.
Tenderers/ Contractors are required to obtain their own copies.
- 2) The **Specifications** identified in Section C3.3.1.
Tenderers/ Contractors are required to obtain their own copies.
- 3) The following acts, regulations, policies, and standards referred to in this document, including but not limited to:
 - The Employer’s Supply Chain Management Policy (as at advertising date).
 - The Occupational Health and Safety Act No 85 and Amendment Act No 181 of 1993, and the Construction Regulations (2014).
 - The Construction Industry Development Board Act No 38 of 2000 and the Regulations issued in terms of the Act (July 2013 as amended).
 - The Preferential Procurement Policy Framework Act (PPPFA), and the PPPFA Regulations (November 2022).
 - The Amended Construction Sector Code (Government Gazette No.41287) applicable to B-BBEE compliance measurement.
 - SANS 1921:2004 – Construction and Management Requirements for Works Contract, Parts 1-3.
 - South African Road Traffic Signs Manual - Vol 2: Chapter 13: Roadworks Signing.
 - [CIDB Standard for Developing Skills Through Infrastructure Contracts, published in Gazette Notice No. 48491 of 28 April 2023.](#)
 - [CIDB Standard for Indirect Targeting for Enterprise Development through Construction Works Contracts, published in Gazette Notice No. 36190 of 25 February 2013.](#)
 - Any other eThekwini Policy documents referenced in the Tender Documents.

C.2.6 Acknowledge addenda:

Add the following paragraphs:

“Addenda will be published on the **eThekwini Municipality website** as stated in **Tender Data: C.1.2**. Tenderers are to ensure that this website is consulted for any published addenda pertaining to this tender up to three days before the tender closing time as stated in the **Tender Data**.”

“Acknowledgement of receipt of the addenda will be by the return of the relevant completed, dated, and signed portion of the addenda, to the physical or email address as specified on the addenda.”

Failure of the Tenderer to comply with the requirements of the addenda will result in the tender submission being made non-responsive.

C.2.7 Clarification meeting:

Clarification Meeting Type: **Compulsory Clarification Meeting**. Questions and answers from the clarification meeting will be consolidated and posted on eTenders/Municipal website for the benefit of all tenderers by 09 June 2026.

7 Sandringham Court, Umhlanga, Ward 35 on Wednesday, 2 June 2026 at 10:00am

Bidders are requested to submit emailed queries related to the bid. All emailed queries are to be submitted to the **Employer’s Agent’s Representative** (refer to C.1.4) by 2026/04/30. Emailed questions and answers will be consolidated and posted on the eTenders/Municipal website for the benefit of all tenderers by 2026/05/01.

In the event of a Compulsory Clarification Meeting the Tenderer’s representative(s) must be able to clearly convey the discussions at the meeting to the person(s) responsible for compiling the entity’s tender offer.

If an attendance register is applicable, Tenderers must sign the attendance register and provide the name of the tendering entity.

Tenderers are referred to Clause C.2.1.1(a).

C.2.10.2 Pricing the tender offer:

The following is to be noted in terms of Tenderers being **VAT Registered**, or being a **Non-VAT Vendor** (ie. not VAT registered).

If the Tenderer is **VAT registered**, the Tenderer’s Rates in the Bill of Quantities (BoQ) are to exclude VAT. VAT is to be shown separately on the BoQ summary page, and on the Form of Offer (Part C1.1.1).

If the Tenderer is a **Non-VAT Vendor**, the Tenderer’s Rates in the Bill of Quantities are to include VAT. VAT is not to be shown separately on the BoQ summary page, or on the Form of Offer (Part C1.1.1). VAT will not be added to, or deducted from, rates or prices submitted from **Non-VAT Vendors**. The tendered priced will be deemed to include all VAT, taxes, and any applicable excise duties.

Tenderers are to refer to Part C2.1: PRICING ASSUMPTIONS / INSTRUCTIONS prior to pricing the tender offer.

C.2.12 Alternative tender offers:

No alternative tender offers will be considered.

C.2.13 Submitting a tender offer:

The signed Tender Offer (“hard copy”) is to be sealed in an envelope, addressed to the City Manager,

marked with the **identification details** and be delivered to the **delivery address**, both as stated below.

The **Tender Offer** (hard copy) is to be delivered to the following **delivery address**:
the **Tender Box in the foyer of the Municipal Building, 166 KE Masinga Road, Durban**

Identification details to be shown on the hard copy package are:

- Contract No. : **35389-1N**
- Contract Title : **Herrwood Drive, Umhlanga, Ward 35: Stormwater Attenuation Pond**

Tender Offers are also to be **SUBMITTED ELECTRONICALLY** (uploaded) on the eThekweni Municipality **JDE System** (Supplier Self Service (SSS Module)). For information pertaining to the JDE System, Tenderers are referred to **Section T1.1.2**.

Notwithstanding the **electronic submission**, a tender offer will only be deemed valid if the “hard copy” submission has been made. The “hard copy” submission will be the governing submission.

The Tender documentation, issued by the eThekweni Municipality (refer to **Tender Data: C.1.2**), is to be printed in its entirety. Printing should be done on white A4 paper, with printing on only one side of the paper. (It is suggested that the Tender documentation is not stapled, or punched for filing, prior to scanning, as this could affect the scanning process.)

After completion and signature (using **BLACK INK**), the entire Tender document is to be scanned to a single PDF (**P**ortable **D**ocument **F**ormat) document, at a resolution of 300 DPI (dots per inch). The PDF document is to be uploaded via the (Tender specific) upload option on the JDE System (SSS Module). Tenderers are responsible for resolving all access rights and submission queries on the JDE System before the tender closing date/ time (**Tender Data: C.2.15**).

Tender Offer delivery, and the electronic submission on the JDE System, are both to be completed on or before the closing date/ time stated in the **Tender Data: C.2.15**.

The submission of Tender Offers via any means other than that stated above will not be accepted, and those that are will be deemed invalid.

C.2.15 Closing date and time:

The closing time is:

- **Date** : **Friday, 12 June 2026**
- **Time** : **11h00**

The **delivery of the hard copy AND** the completion of the requirements on the **JDE System (SSS Module)** are to be completed prior to the Tender **closing date and time** as stated above. Any Tender Offer submitted thereafter will not be considered.

C.2.16 Tender offer validity:

The Tender Offer validity period is **120 Days** (original validity period) from the closing date for submission of tenders.

In terms of the SCM Policy (Cl.21.2) tenders must remain valid for acceptance for a period of twelve (12) months after the expiry of the original validity period, unless the Municipality is notified in writing of anything to the contrary by the tenderer.

The eThekweni Municipality reserves the right to request confirmation from Tenderers of tender validity at any time during the twelve (12) month period.

C.2.20 Submit securities, bonds, policies:

The Tenderer is required to submit with their tender offer a letter of intent from an approved insurer undertaking to provide the Performance Bond to the format included in T2.2 of this procurement document.

C.2.23 Certificates:

Refer to **T2.1: “List of Returnable Documents”** for a listing of certificates that must be provided with the tender. All certificates must be valid at the time of tender closing.

Tenderers are to include a printout of the required documents/ certificates at the back of their tender submission.

1) SARS Tax Compliance Status – PIN Issued

Reference is to be made to **Returnable Document “Compulsory Enterprise Questionnaire”** which requires the “SARS Tax Compliance Status – PIN Issued” to be included with this returnable document.

2) Central Supplier Database (CSD)

Reference is to be made to **Returnable Document “CSD Registration Report”**.

The entities **CSD Registration Report**, obtained from the National Treasury Central Supplier Database (CSD), is to be included in the tender submission (<https://secure.csd.gov.za>).

Separate **CSD Registration Reports** are required for each party to a Joint Venture.

The date of obtaining the CSD printout is to be indicated on the printout and should be on or after the date of advertising of this tender.

3) CIDB Registration (if applicable)

Reference is to be made to **Returnable Document “Verification of CIDB Registration and Status”**.

Tenderers are to include with their submission a printout of their **CIDB Registration**, obtained from the CIDB website (<https://portal.cidb.org.za/RegisterOfContractors/>).

Separate **CIDB Registration printouts** are required for each party to a Joint Venture.

The **Joint Venture Grading Designation Calculator** printout should be included when making a submission as a Joint Venture:

(<https://registers.cidb.org.za/PublicContractors/JVGradingDesignationCalc>)

The date of obtaining the CIDB printout(s) is to be indicated on the printout and should be on or after the date of advertising of this tender. The Tenderer’s registration with the CIDB must be reflected as “Active” as at the date of tender closing.

Failure to comply with 1), 2), and 3) above will result in the tender offer being deemed non-responsive.

4) B-BBEE Status Level of Contribution Certificate

Tenderers are referred to **Returnable Document “MBD 6.1: Preference Points Claim”** for the B-BBEE Certificate requirements. Notwithstanding the completion of **Returnable Document “MBD 6.1: Preference Points Claim”**, should a B-BBEE Status Level of Contribution Certificate not be returned no points for Preferential Procurement will be deemed to have been claimed.

The Amended Construction Sector Code (Government Gazette No.41287) is applicable to the B-BBEE compliance measurement of all entities that fall within the Construction Sector (Built Environment Professionals (BEP) and Contractors). The requirements for measurement and verification of entities are contained in the "Amended Code Series CSC000: Framework for Measuring Broad Based Black Economic Empowerment in the Construction Sector", as published in Notice 931 of 2017, Government Gazette No.41287 of 01/12/2017.

An EME Contractor with a Total Annual Revenue of less than R3 million, or a BEP with a total annual revenue of less than R1.8 million, may present an affidavit OR a certificate issued by the CIPC, OR an authorised B-BBEE verification certificate by a SANAS accredited Verification Agency.

Any B-BBEE Certificate where the entity has been assessed using **Generic Codes** will not be accepted.

C.3: THE EMPLOYER'S UNDERTAKINGS

C.3.1.1 Respond to requests from the tenderer:

Replace the words "five working days" with "three working days".

C.3.2 Issue addenda:

Add the following paragraph:

"Addenda will be published on the National Treasury's **eTenders-Website** and/ or the **eThekwini Municipality Website**." (Refer to **Tender Data: C.1.2**).

C.3.4 Opening of Tender Submissions:

Tenders will be opened immediately after the closing time for tenders. The public reading of tenders will take place in the P&SCM Boardroom, 6th Floor, (Municipal Building), 166 KE Masinga Road, Durban.

The tender opening schedule will also be made available on the eThekwini Municipal website at URL: <https://www.durban.gov.za/pages/business/publication-of-received-bids>

C.3.9 Arithmetical errors, omissions and discrepancies:

Add the following Clause:

"C.3.9.5 Reject a tender offer if the Tenderer does not accept the correction of the arithmetical error in the manner described in C.3.9.4."

Any interactions between the Tenderer and the Employer in terms of this clause will be conducted through the Employer's Agent (or Representative) as identified in **Tender Data C.1.4**.

C.3.11 Evaluation of Tender Offers:

Functionality

FUNCTIONALITY will be evaluated to determine the responsiveness of tenders received. The minimum score for FUNCTIONALITY is 60 points. Those tenders not achieving the minimum score will be deemed non-responsive.

The functionality Criteria, Sub-Criteria, Points per Criteria/ Sub-Criteria, Returnable Documentation and Schedules, Method of Evaluation, and Prompts for Judgement are as specified in **Part T1.2.3: Additional Conditions of Tender**.

Preference Point System

The procedure for the evaluation of responsive tenders is **PRICE AND PREFERENCE**, in accordance with the Employer's **SCM Policy: Section 52: Preferential Procurement**.

The **80/20** preference points system, for requirements with a Rand value of up to R50,000,000 (all applicable taxes included), will be applied. The Formula used to calculate the **Price Points (max. 80)** will be according to that specified below.

Price Points

A maximum of 80 or 90 points is allocated for price on the following basis:

80/20 Procurement System

or

90/10 Procurement System

$$P_s = 80 \left(1 - \frac{P_t - P_{\min}}{P_{\min}} \right)$$

$$P_s = 90 \left(1 - \frac{P_t - P_{\min}}{P_{\min}} \right)$$

Where: Ps = Points scored for comparative price of bid under consideration
 Pt = Comparative price of bid under consideration
 Pmin = Comparative price of lowest acceptable bid

Preference Points

Reference is to be made to **Returnable Form: MBD 6.1: Preference Points Claim**.

Broad-Based Black Economic Empowerment (SCM Policy Section 52.5)

The provisions of the SCM Policy: **Section 52.5: Broad-Based Black Economic Empowerment** shall apply. Reference is to be made to **Returnable Form: MBD 6.1: Preference Points Claim**.

Preference Points will be derived from points claimed for their B-BBEE Status Level of Contributor, as indicated on their B-BBEE Status Level Verification Certificates, on **Returnable Form: T2.2.6: MBD 6.1**, in accordance with the table below.

80/20 Preference Points System (maximum Preference Points: 20)				
B-BBEE Level Contributor	Preference Points		B-BBEE Level Contributor	Preference Points
1	20		5	8
2	18		6	6
3	14		7	4
4	12		8	2
Non-Compliant: 0				

C.3.13 Acceptance of tender offer:

In addition to the requirements of **Tender Data: C.3.13** of the **Standard Conditions of Tender**, tender offers will only be accepted if:

- (a) The Tenderer's municipal rates and taxes are not in arrears, or they have made arrangements

to meet outstanding municipal fee obligations.

- (b) The Tenderer's tax compliance status has been verified, or they have made arrangements to meet outstanding tax obligations.
- (c) If applicable, the Tenderer is **registered**, and "**Active**", with the **Construction Industry Development Board** in an appropriate contractor grading designation.
- (d) The Tenderer or any of its directors/ shareholders are **not listed on the Register of Tender Defaulters**, in terms of the Prevention and Combating of Corrupt Activities Act of 2004, as a person prohibited from doing business with the public sector.
- (e) The Tenderer has not:
 - i) Abused the Employer's Supply Chain Management System; or
 - ii) Failed to perform on any previous contract and has been given a written notice to this effect.
- (f) The Employer is reasonably satisfied that the Tenderer has in terms of the Construction Regulations (2014), issued in terms of the Occupational Health and Safety Act (1993), the **necessary competencies and resources to carry out the work safely**.

The Municipality does not bind itself to accept the lowest or any tender. It reserves the right to accept the whole or any part of a tender to place orders. Bidders shall not bind the Municipality to any minimum quantity per order. The successful Tenderer(s) shall be bound to provide any quantities stipulated in the specification.

The municipality has a firm intention to proceed with the work, subject to funding being identified. Notwithstanding the **Standard Conditions of Tender: C.1.1.3** of, the municipality reserves the right to award or not award the tender based on the municipalities available budget.

C.3.15 Complete adjudicator's contract:

Refer to the Conditions of Contract and the Contract Data.

C.3.17 Copies of contract:

The number of paper copies of the signed contract to be provided by the Employer is ONE (1). Tenderers are referred to the requirements as stated in the **Tender Data: C.2.13**.

T1.2.3 ADDITIONAL CONDITIONS OF TENDER

T1.2.3.1 Complaints and Objections (Appeals)

Reference is to be made to Clause 49 of the eThekweni Supply Chain Management Policy.

In terms of Section 49 of the EtheKwini SCM Policy any person aggrieved by decisions taken in the implementation of the SCM System may lodge, within 14 days of notification thereof, a written objection against the decision. The objection with regard to the decision is to be directed to:

The City Manager
Attention Ms S. Pillay eMail: Simone.Pillay@durban.gov.za
P O Box 1394
DURBAN
4000

Any objection will only be processed upon receipt of a non-refundable administration fee of **R1,814.00** (including VAT), as stipulated in the Municipality's current SCM Policy. An objection will only be considered upon receipt of proof of payment of this fee which must be paid into the following bank account as a real-time payment:

EThekweni Metropolitan Municipality
First National Bank (FNB)
Account Number: 631-6574-6331
Reference Number: **35389-1N**

T1.2.3.2 Prohibition on awards to persons in the service of the state

Clause 44 of the Supply Chain Management Regulations states that the Municipality or Municipal Entity may not make any award to a person:

- (a) Who is in the service of the State;
- (b) If that person is not a natural person, of which a director, manager, principal shareholder or stakeholder is a person in the service of the state; or
- (c) Who is an advisor or consultant contracted with the municipality or a municipal entity.

Should a contract be awarded, and it is subsequently established that Clause 44 has been breached, the Employer shall have the right to terminate the contract with immediate effect.

T1.2.3.3 Code of Conduct and Local Labour

The Tenderers shall make themselves familiar with the requirements of the following policies:

- Code of Conduct;
- The Use of CLOs and Local Labour.

T1.2.3.4 Functionality Specification

The value of W_2 is 100. The Functionality criteria (and sub-criteria if applicable) and maximum score in respect of each of the criteria are as follows:

Functionality Criteria / Sub Criteria		Maximum Points Score
Tenderer's Experience		40
Project Organogram and Experience of Key Staff	Contracts Manager	15
	Site agent	15
	Foremen	10
Preliminary Programme		10
Construction Methodology		10
Maximum possible score for Functionality (M_s)		100

The minimum number of evaluation points for Functionality is **60**. Only those Tenderers who achieve the minimum number of Functionality evaluation points (or greater) will be eligible to have their tenders further evaluated.

Functionality shall be scored by not less than three evaluators and the scores of each of the evaluators will be averaged, weighted and then totalled to obtain the final score for Functionality. Each evaluation criteria will be assessed in terms of six indicators and scores allocated according to the following table:

Level 0	Level 1	Level 2	Level 3	Level 4	Level 5
0	20	40	60	80	100

Evaluation criteria will be adjudicated according to submissions made in accordance with the following schedules, which are found in T2.2: Returnable Schedules:

Criteria	Returnable Schedules
Tenderer's Experience	<ul style="list-style-type: none"> • Experience of Tenderer
Project Organogram and Experience of Key Staff	<ul style="list-style-type: none"> • Proposed Organisation and Staffing • Key Personnel • Experience of Key Personnel
Preliminary Programme	<ul style="list-style-type: none"> • Preliminary Programme
Construction Methodology	<ul style="list-style-type: none"> • Construction Approach, Methodology, and Quality Control • Schedule of Proposed Subcontractors • Plant and Equipment

Unless otherwise stated, evaluation criteria will be adjudicated with respect to the contract specific Scope of Work, as specified in C.3. In this regard the following definitions apply to the evaluation criteria prompts for judgement:

- “**successfully completed**” implies a project has been completed on time and to specification;
- “**similar nature**” implies projects that were of a value of at least 70% of this tender’s value, and had a comparable Scope of Work in terms of technical requirements and operations;
- “**experience**” implies experience on projects of a similar nature;
- “**accredited degree / diploma**” implies a minimum 3 year qualification within the built environment, from a registered University or Institute of Technology.

Criterion: Tenderer’s Experience	
Level 0	No information provided; OR submission of no substance / irrelevant information provided
Level 1	To have successfully completed <u>1 project</u> of a similar nature within the past 5 years.
Level 2	To have successfully completed <u>2 to 3 projects</u> of a similar nature within the past 5 years.
Level 3	To have successfully completed <u>4 to 10 projects</u> of a similar nature within the past 5 years.
Level 4	To have successfully completed <u>11 to 15 projects</u> of a similar nature within the past 5 years.
Level 5	To have successfully completed <u>15+ projects</u> of a similar nature within the past 5 years.

Criterion: Project Organogram and Experience of Key Staff			
	CONTRACTS MANAGER	SITE AGENT	FOREMAN
Level 0	No information provided OR submission of no substance / irrelevant information provided OR less than 2 year’s experience OR Relevant accredited diploma / degree and less than 1 year’s experience.	No information provided OR submission of no substance / irrelevant information provided OR less than 2 year’s experience. OR Relevant accredited diploma / degree and less than 1 year’s experience.	No information provided OR submission of no substance / irrelevant information OR Less than 2 year’s experience.
Level 1	Minimum 2 year’s experience OR Relevant accredited diploma / degree and minimum 1 year’s experience.	Minimum 2 year’s experience OR Relevant accredited diploma / degree and minimum 1 year’s experience.	Minimum 2 year’s experience.
Level 2	Minimum 3 year’s experience OR Relevant accredited diploma / degree and minimum 2 year’s experience.	Minimum 3 year’s experience OR Relevant accredited diploma / degree and minimum 2 year’s experience.	Minimum 3 year’s experience.
Level 3	Minimum 5 year’s experience OR Relevant accredited diploma / degree and minimum 4 year’s experience.	Minimum 5 year’s experience OR Relevant accredited diploma / degree and minimum 4 year’s experience.	Minimum 5 year’s experience.
Level 4	Minimum 8 year’s experience OR Relevant accredited diploma / degree and minimum 7 year’s experience.	Minimum 8 year’s experience OR Relevant accredited diploma / degree and minimum 7 year’s experience.	Minimum 8 year’s experience.
Level 5	Minimum 10 year’s experience OR Relevant accredited diploma / degree and minimum 9 year’s experience.	Minimum 10 year’s experience OR Relevant accredited diploma / degree and minimum 9 year’s experience.	Minimum 10 year’s experience.

Criterion: Preliminary Programme	
Level 0	No information provided; OR submission of no substance / irrelevant information provided
Level 1	The Tenderer has misunderstood certain aspects of the Scope of Work and does not deal with the critical aspects of the project.
Level 2	The programme does not adequately deal with the critical characteristics of the project or the plan and manner in which risk is to be managed.
Level 3	Programme covers all the applicable individual activities which are in an acceptable sequence, with appropriate durations, and is in accordance with generally accepted construction practice, and is in line with Clause 1.1.1.14 of the Conditions of Contract (time for achieving Practical Completion). Programme must show the critical path
Level 4	In addition to the requirements of level 3, the programme covers all activities, meetings, requirements and is sufficiently flexible to accommodate changes that may be required during execution within project completion time.
Level 5	In addition to the requirements of level 4, the program covers all activities, meetings, requirements and accommodates changes and details ways to improve the overall project outcome within the completion time.

Criterion: Construction Methodology & Quality Control	
Level 0	No information provided; OR submission of no substance / irrelevant information provided
Level 1	The technical approach / methodology, plant and equipment is poor and gives no relevant information in satisfying the projects objectives
Level 2	The technical approach and/or methodology is less than acceptable and unlikely to satisfy project objectives or requirements. Plant and equipment is unlikely to provide adequate protection of the works.
Level 3	Brief overview of the methodology which encompasses all programmed activities in appropriate order and includes staff, plant and equipment resources, including subcontractors if applicable, a brief description of preparatory work, construction processes including finishing works for each activity.
Level 4	The methodology is specifically tailored to address specific project requirements. The methods and approach to managing risk etc. are specifically tailored to the critical characteristics of the project. The plant and equipment are specifically tailored to the project requirements and are sufficiently adaptable to accommodate changes that may be required during execution
Level 5	Besides meeting the "above Level 4" rating, the important issues are approached in an innovative and efficient way, indicating that the Tenderer has excellent knowledge of working in the projects environment and producing the required final product. Plant and equipment proposals and ownership/provision arrangements are most likely to ensure a satisfactory project outcome.

PART T2: RETURNABLE DOCUMENTS

T2.1 LIST OF RETURNABLE DOCUMENTS

T2.1.1 General

The Tender Submission Documentation must be submitted in its entirety. All forms must be properly completed and signed as required.

The Tenderer is required to complete and sign each and every Schedule and Form listed below to the best of their ability as the evaluation of tenders and the eventual contract will be based on the information provided by the Tenderer.

Failure of a Tenderer to complete the Schedules and Forms to the satisfaction of the Employer will inevitably prejudice the tender and may lead to rejection on the grounds that the tender is non-responsive.

T2.1.2 Returnable Schedules, Forms and Certificates

Entity Specific

T2.2.1	Compulsory Enterprise Questionnaire	31
T2.2.2	Certificate of Attendance at Clarification Meeting/ Site Inspection	32
T2.2.3	MBD 4: Declaration of Interest	33
T2.2.5	Contracts Awarded by Organs of State in the past 5 years	35
T2.2.6	MBD 6.1: Preference Points Claim Form (SCM Policy Section 52.5).....	36
T2.2.7	MBD 6.2: Declaration for Local Production and Content (if applicable).....	39
T2.2.8	MBD 8: Declaration of Bidder's Past SCM Practices	43
T2.2.9	MBD 9: Certificate of Independent Bid Determination	45
T2.2.10	Declaration of Municipal Fees	47
T2.2.11	Contractor's Health and Safety Declaration	48
T2.2.12	CSD Registration Report.....	50
T2.2.13	CIDB Registration and Status	51
T2.2.14	Joint Venture Agreements (if applicable)	52
T2.2.15	Record of Addenda to Tender Documents.....	53

Technical or Functionality Evaluation

T2.2.16	Experience of Tenderer.....	54
T2.2.17	Proposed Organisation and Staffing	55
T2.2.18	Key Personnel	56
T2.2.19	Experience of Key Personnel	57
T2.2.20	Preliminary Programme.....	58
T2.2.21	Construction Approach, Methodology, and Quality Control	59
T2.2.22	Schedule of Proposed Subcontractors.....	60
T2.2.23	Plant and Equipment	61
T2.2.24	Contractor's Health and Safety Plan	62

Contract Part: The Tenderer is required to complete following forms:

C1.1.1	Form of Offer	63
C1.2.2.2	Data to be Provided by Contractor	66
C2.2	Bill of Quantities	74

T2.2.1 COMPULSORY ENTERPRISE QUESTIONNAIRE

Ref	Description	Tenderer to Complete	
1.1	Name of enterprise		
1.2	Name of enterprise’s representative		
1.3	Email address of representative		
1.4	Contact numbers of representative	Tel:	Cell:
1.5	National Treasury Central Supplier Database Registration number	MAAA	
1.6	VAT registration number, if any:		
1.7	CIDB registration number, if any:		
1.8	Department of Labour: Registration number		
1.9	Department of Labour: Letter of Good Standing Certificate number		

2.0 Particulars of sole proprietors and partners in partnerships (attach separate pages if more than 4 partners)			
	Full Name	Identity No.	Personal income tax No. *
2.1			
2.2			
2.3			

3.0 Particulars of companies and close corporations	
3.1	Company registration number, if applicable:
3.2	Close corporation number, if applicable:
3.3	Tax Reference number, if any:
3.4	* South African Revenue Service: Tax Compliance Status PIN:

4.0 **MBD 4, MBD 6, MBD 8, and MBD9** issued by National Treasury must be completed for each tender and be included as a tender requirement.

* Tenderers are to include, at the back of their tender submission, a printout of their SARS “**Tax Compliance Status – PIN Issued**” certificate, failing which the tender submission will be deemed non-responsive.

The undersigned, who warrants that he / she is duly authorised to do so on behalf of the enterprise:

- i) authorizes the Employer to verify the Tenderer’s tax clearance status from the South African Revenue Services that it is in order.
- ii) confirms that the neither the name of the enterprise or the name of any partner, manager, director or other person, who wholly or partly exercises or may exercise, control over the enterprise appears on the Register of Tender Defaulters established in terms of the Prevention and Combating of Corrupt Activities Act of 2004.
- iii) confirms that no partner, member, director or other person, who wholly or partly exercises, or may exercise, control over the enterprise appears, has within the last five years been convicted of fraud or corruption.
- iv) confirms that I / we are not associated, linked or involved with any other tendering entities submitting tender offers and have no other relationship with any of the Tenderers or those responsible for compiling the scope of work that could cause or be interpreted as a conflict of interest.
- v) confirms that the contents of this questionnaire are within my personal knowledge and are to the best of my belief both true and correct.

NAME (Block Capitals): _____ **Date**

SIGNATURE: _____

T2.2.2 CERTIFICATE OF ATTENDANCE AT CLARIFICATION MEETING / SITE INSPECTION

Reference is to be made to the **Tender Data: C.2.1.1(a) and C.2.7.**

This is to certify that:

(entity name):

of (address):

.....
.....
.....
.....

was represented by the person(s) named below at the Clarification Meeting for Contract **35389-1N** held for all Tenderers, the details of which are stated in the **Tender Data: C.2.7.**

I / We acknowledge that the purpose of the meeting was to acquaint myself / ourselves with the site of the works and / or matters incidental to doing the work specified in the tender documents in order for me / us to take account of everything necessary when compiling our rates and prices included in the tender.

Particulars of person(s) attending the meeting:

Name:

Name:

Signature:

Signature:

Capacity:

Capacity:

Attendance of the above person(s) at the meeting is confirmed by the Employer's Agent's Representative, namely:

Name:

Signature:

Date:

T2.2.3 MBD 4: DECLARATION OF INTEREST

MSCM Regulations: **“in the service of the state”** means to be:

- (a) a member of:
 - (i) any municipal council.
 - (ii) any provincial legislature.
 - (iii) the national Assembly or the national Council of provinces.
- (b) a member of the board of directors of any municipal enterprise.
- (c) an official of any municipality or municipal enterprise.
- (d) an employee of any national or provincial department, national or provincial public enterprise or constitutional institution within the meaning of the Public Finance Management Act, 1999 (Act No.1 of 1999).
- (e) a member of the accounting authority of any national or provincial public enterprise.
- (f) an employee of Parliament or a provincial legislature.

“Shareholder” means a person who owns shares in the company and is actively involved in the management of the company or business and exercises control over the company.

- 1 No bid will be accepted from persons **in the service of the state**¹.
- 2 Any person, having a kinship with persons **in the service of the state**, including a blood relationship, may make an offer or offers in terms of this invitation to bid. In view of possible allegations of favouritism, should the resulting bid, or part thereof, be awarded to persons connected with or related to **persons in service of the state**, it is required that the bidder or their authorised representative declare their position in relation to the evaluating/adjudicating authority and/or take an oath declaring his/her interest.
- 3 In order to give effect to the above, the following questionnaire must be completed and submitted with the bid.

- 3.1 Name of enterprise
- Name of enterprise’s representative
- 3.2 ID Number of enterprise’s representative
- 3.3 Position enterprise’s representative occupies in the enterprise
- 3.4 Company Registration number
- 3.5 Tax Reference number
- 3.6 VAT registration number

3.7 The names of all directors / trustees / shareholders / members / sole proprietors / partners in partnerships, their individual identity numbers and state employee numbers must be indicated in paragraph 4 below. In the case of a joint venture, information in respect of each partnering enterprise must be completed and submitted.

3.8 Are you presently in the service of the state?

Circle Applicable	
YES	NO

If yes, furnish particulars:

.....

3.9 Have you been in the service of the state for the past twelve months?

YES	NO
-----	----

 If yes, furnish particulars:

3.10 Do you have any relationship (family, friend, other) with persons in the service of the state and who may be involved with the evaluation and or adjudication of this bid?

YES	NO
-----	----

 If yes, furnish particulars:

3.11 Are you, aware of any relationship (family, friend, other) between any other bidder and any persons in the service of the state who may be involved with the evaluation and or adjudication of this bid?

YES	NO
-----	----

 If yes, furnish particulars:

3.12 Are any of the company's directors, trustees, managers, principle shareholders or stakeholders in service of the state?

YES	NO
-----	----

 If yes, furnish particulars:

3.13 Are any spouse, child or parent of the company's directors, trustees, managers, principle shareholders or stakeholders in service of the state?

YES	NO
-----	----

 If yes, furnish particulars:

3.14 Do you or any of the directors, trustees, managers, principle shareholders, or stakeholders of this company have any interest in any other related companies or business whether or not they are bidding for this contract ?

YES	NO
-----	----

 If yes, furnish particulars:

4 The names of all directors / trustees / shareholders / members / sole proprietors / partners in partnerships, their individual identity numbers and state employee numbers must be indicated below. In the case of a joint venture, information in respect of each partnering enterprise must be completed and submitted

Full Name	Identity No.	State Employee No.	Personal income tax No.
Use additional pages if necessary			

Failure to complete this form in full, sign, and return with the tender submission will result in the tender offer being deemed non-responsive.

I, the undersigned, who warrants that they are authorised to sign on behalf of the Tenderer, confirms that the information contained in this form is within my personal knowledge and is to the best of my belief both true and correct.

NAME (Block Capitals):

Date

SIGNATURE:

T2.2.6 MBD 6.1: PREFERENCE POINTS CLAIM) (SCMP 52.5: Broad-Based Black Economic Empowerment)

This form serves as a claim form for preference points for **Broad-Based Black Economic Empowerment (B-BBEE) Status Level of Contribution**. Reference is to be made to the **Tender Data: C.3.11**.

1.0 GENERAL CONDITIONS

- 1.1 The relevant **Preference Points System (80/20 or 90/10)** applicable to this bid is stated in the **Tender Data: C.3.11**.
- 1.2 Failure on the part of a bidder to fill in and/ or sign this form, and submit a B-BBEE Verification Certificate from a Verification Agency accredited by the South African Accreditation System (SANAS), or a Registered Auditor approved by the Independent Regulatory Board of Auditors (IRBA), or sworn affidavits in the case of Exempted Mico Enterprises or Qualifying Small Enterprises, together with the bid, will be interpreted to mean that preference points for **B-BBEE Status Level Of Contribution** are not claimed.
- 1.3 The purchaser reserves the right to require of a bidder, either before a bid is adjudicated or at any time subsequently, to substantiate any claim in regard to preferences, in any manner required by the purchaser.

2.0 ADJUDICATION USING A POINT SYSTEM

- 2.1 The bidder obtaining the highest number of total points will be recommended for the award of the contract.
- 2.2 Preference points shall be calculated after prices have been brought to a comparative basis taking into account all factors of non-firm prices and all unconditional discounts.
- 2.3 Points scored will be rounded off to the nearest 2 decimal places.
- 2.4 In the event that two or more bids have scored equal total points, the successful bid must be the one scoring the highest number of preference points for B-BBEE.
- 2.5 However, when functionality is part of the evaluation process and two or more bids have scored equal points including equal preference points for B-BBEE, the successful bid must be the one scoring the highest score for functionality.
- 2.6 Should two or more bids be equal in all respects the award shall be decided by the drawing of lots.

3.0 POINTS AWARDED FOR PRICE

A maximum of 80 or 90 points is allocated for price on the following basis:

80/20 Procurement System

or

90/10 Procurement System

$$P_s = 80 \left(1 - \frac{P_t - P_{\min}}{P_{\min}} \right)$$

$$P_s = 90 \left(1 - \frac{P_t - P_{\min}}{P_{\min}} \right)$$

Where: Ps = Points scored for comparative price of bid under consideration
 Pt = Comparative price of bid under consideration
 Pmin = Comparative price of lowest acceptable bid

4.0 POINTS ALLOCATED FOR B-BBEE STATUS LEVEL OF CONTRIBUTION

- 4.1 Preference points must be claimed by a bidder for attaining the **B-BBEE Status Level of Contribution** in accordance with the applicable table below:

80/20 Preference Points System	
B-BBEE Level Contributor	Preference Points
1	20
2	18
3	14
4	12
5	8
6	6
7	4
8	2
Non-Compliant	0

- 4.2 All bidders must submit B-BBEE Status Level of Contribution Certificates, issued by either verification agencies accredited by the South African Accreditation System (SANAS), or by registered auditors approved by the Independent Regulatory Board for Auditors (IRBA), **or sworn affidavits** in a case of an Exempted Micro Enterprise (EME) or a Qualifying Small Enterprise (QSE).
- 4.3 Any enterprise with an annual Total Revenue of R 10 million or less qualifies as an Exempted Micro-Enterprise.
- 4.4 Exempted Micro-Enterprises are deemed to have B-BBEE Status of "Level Four Contributor" having a B-BBEE procurement recognition of 100% in terms of the Codes of Good Practice.
- 4.5 An Exempted Micro Enterprise (EME) with at least 51% black ownership qualifies as a Level 2 contributor with BBBEE level of 125% in terms of the Codes of Good Practice.
- 4.6 An Exempted Micro Enterprise with 100% black ownership qualifies as a Level 1 contributor with BBBEE level of 135% in terms of the Codes of Good Practice.
- 4.7 An Exempted Micro Enterprise that is regarded as a specialized enterprise with at least 75% black beneficiaries qualifies as a Level 1 contributor with BBBEE level of 135% in terms of the Codes of Good Practice.
- 4.8 An Exempted Micro Enterprise that is regarded as a specialized enterprise with at least 51% black beneficiaries qualifies as a Level 2 contributor with BBBEE level of 125% in terms of the Codes of Good Practice.
- 4.9 A Qualifying Small Enterprise (QSE) with at least 51% black ownership qualifies as a Level 2 contributor.
- 4.10 A QSE with 100% black ownership qualifies as a Level 1 contributor.
- 4.11 A QSE that is regarded as a specialized enterprise with at least 51% black beneficiaries qualifies as a Level 2 contributor with BBBEE level of 125% in terms of the Codes of Good Practice.
- 4.12 A QSE with less than 51% black ownership is required to submit a BBBEE level verification certificate issued by a BBBEE verification professional.
- 4.13 A Trust, consortium or joint venture:
- must submit a B-BBEE status level certificate in order to qualify for points;
 - may qualify for points as an unincorporated entity provided, that they submit their consolidated scorecard is prepared for separate tender; and
 - where no consolidated scorecard exists, the weighted average (in accordance with participation percentages) must be used and rounded off to the nearest status level.
- 4.14 Gazetted Sector Codes supersede Generic Codes.

5.0 SUB-CONTRACTING

- 5.1 B-BBEE points must not be awarded to a tenderer who intends sub-contracting more than 25% of the value of the contract to an enterprise that does not qualify for at least the points that such contractor qualifies for, unless the intended sub-contractor is an EME who has the ability and capability to execute the contract.
- 5.2 A person awarded a contract may not sub-contract more than 25% of the value of the contract to an enterprise that does not have an equal or higher B-BBEE status level, unless the intended sub-contractor is an EME who has the ability and capability to execute the contract.
- 5.3 A person awarded a contract in relation to a designated sector may not sub-contract in such a manner that the **Local Production and Content** of the overall value of the contract is reduced to below the prescribed minimum threshold.

6.0 BID DECLARATION

- 6.1 Bidders who wish to claim points in respect of **B-BBEE Status Level of Contribution** must complete the following:

B-BBEE Status Level of Contribution	Tenderer's Preference Points Claim (maximum of 10 or 20 points)
Points claimed must be in accordance with the relevant table reflected in paragraph 4.1 and must be substantiated by means of a B-BBEE Status Level of Contribution Certificate issued by a verification agency accredited by the South African Accreditation System (SANAS), or by registered auditors approved by the Independent Regulatory Board for Auditors (IRBA), or sworn affidavits in a case of an Exempted Micro Enterprise (EME) or a Qualifying Small Enterprise (QSE).	

Tenderers are to include, at the back of their tender submission, their B-BBEE Status Level of Contribution Certificate, or sworn affidavits, failing which no Preference Points will be deemed to have been claimed.

I, the undersigned, who warrants that they are authorised to sign on behalf of the Tenderer, confirms that the information contained in this form is within my personal knowledge and is to the best of my belief both true and correct, and, if required, that the requested documentation has been included in the tender submission.

NAME (Block Capitals):

Date

SIGNATURE:

T2.2.7 MBD 6.2: DECLARATION CERTIFICATE FOR LOCAL PRODUCTION AND CONTENT FOR DESIGNATED SECTORS

This Municipal Bidding Document (MBD 6.2) must form part of all bids invited. It contains general information and serves as a declaration form for local content (local production and local content are used interchangeably).

Before completing this declaration, bidders must study the General Conditions, Definitions, Directives applicable in respect of Local Content as prescribed in the Preferential Procurement Policy, the South African Bureau of Standards (SABS) approved technical specification number SATS 1286:2011 (Edition 1) and the Guidance on the Calculation of Local Content together with the Local Content Declaration Templates [Annex C (Local Content Declaration: Summary Schedule), D (Imported Content Declaration: Supporting Schedule to Annex C) and E (Local Content Declaration: Supporting Schedule to Annex C)].

1.0 GENERAL CONDITIONS

- 1.1. The Preferential Procurement Policy makes provision for the promotion of local production and content.
- 1.2. The Policy prescribes that in the case of designated sectors, organs of state must advertise such tenders with the specific bidding condition that only locally produced or manufactured goods, with a stipulated minimum threshold for local production and content will be considered.
- 1.3. Where necessary, for tenders referred to in paragraph 1.2 above, a two-stage bidding process may be followed, where the first stage involves a minimum threshold for local production and content and the second stage price and B-BBEE.
- 1.4. A person awarded a contract in relation to a designated sector, may not sub-contract in such a manner that the local production and content of the overall value of the contract is reduced to below the stipulated minimum threshold.
- 1.5. The local content (LC) expressed as a percentage of the bid price must be calculated in accordance with the SABS approved technical specification number SATS 1286: 2011 as follows:

$$LC = [1 - x / y] * 100$$

Where: x is the imported content in Rand
 y is the bid price in Rand excluding value added tax (VAT)

Prices referred to in the determination of x must be converted to Rand (ZAR) by using the exchange rate published by South African Reserve Bank (SARB) on the date of advertisement of the bid as indicated in paragraph 3.1 below.

The SABS approved technical specification number SATS 1286:2011 is accessible on [http://www.thedti.gov.za/industrial development/ip.jsp](http://www.thedti.gov.za/industrial%20development/ip.jsp) at no cost.

- 1.6. A bid may be disqualified if this Declaration Certificate and the Annex C (Local Content Declaration: Summary Schedule) are not submitted as part of the bid documentation;

2.0 THE STIPULATED MINIMUM THRESHOLD(S)

The stipulated minimum threshold(s) for local production and content (refer to Annex A of SATS 1286:2011) for this bid is/are as follows:

<u>Description of services, works or goods</u>	<u>Stipulated Minimum Threshold</u>
Not required	N/A

3. Does any portion of the goods or services offered have any imported content?

YES NO (Tick applicable box)

3.1 If yes, the rate(s) of exchange to be used in this bid to calculate the local content as prescribed in paragraph 1.5 of the general conditions must be the rate(s) published by SARB for the specific currency on the date of advertisement of the bid.

The relevant rates of exchange information is accessible on www.resbank.co.za

Indicate the rate(s) of exchange against the appropriate currency in the table below (refer to Annex A of SATS 1286:2011):

Currency	Rates of Exchange
US Dollar	
Pound Sterling	
Euro	
Yen	
Other	

NB: Bidders must submit proof of the SARB rate(s) of exchange used.

4. CHALLENGES IN MEETING THE STIPULATED MINIMUM THRESHOLD

Where, after the award of a bid, challenges are experienced in meeting the stipulated minimum threshold for local content the dtic must be informed accordingly in order for the dtic to verify and in consultation with the AO/AA provide directives in this regard.

LOCAL CONTENT DECLARATION BY CHIEF FINANCIAL OFFICER OR OTHER LEGALLY RESPONSIBLE PERSON NOMINATED IN WRITING BY THE CHIEF EXECUTIVE OR SENIOR MEMBER/PERSON WITH MANAGEMENT RESPONSIBILITY (CLOSE CORPORATION, PARTNERSHIP OR INDIVIDUAL)

IN RESPECT OF BID NO. 35389-1N

ISSUED BY: (Procurement Authority / Name of Institution): **ETHEKWINI MUNICIPALITY**

- 1 The obligation to complete, duly sign and submit this declaration cannot be transferred to an external authorized representative, auditor or any other third party acting on behalf of the bidder.
- 2 Guidance on the Calculation of Local Content together with Local Content Declaration Templates (Annex C, D and E) is accessible on <https://www.thedtic.gov.za/sectors-and-services-2/industrial-development/industrial-procurement/>. Bidders should first complete Declaration D. After completing Declaration D, bidders should complete Declaration E and then consolidate the information on Declaration C. **Declaration C should be submitted with the bid documentation at the closing date and time of the bid in order to substantiate the declaration made in paragraph (c) below.** Declarations D and E should be kept by the bidders for verification purposes for a period of at least 5 years. The successful bidder is required to continuously update Declarations C, D and E with the actual values for the duration of the contract.

I, the undersigned, (full names),

do hereby declare, in my capacity as

of(name of bidder entity), the following:

- a) The facts contained herein are within my own personal knowledge.
- b) I have satisfied myself that the goods/services/works to be delivered in terms of the above-specified bid comply with the minimum local content requirements as specified in the bid, and as measured in terms of SATS 1286:2011; and
- c) The local content percentage (%) indicated below has been calculated using the formula given in clause 3 of SATS 1286:2011, the rates of exchange indicated in paragraph 3.1 above and the information contained in Declaration D and E which has been consolidated in Declaration C:

Bid price, excluding VAT (y)	R
Imported content (x), as calculated in terms of SATS 1286:2011	R
Stipulated minimum threshold for local content (paragraph 2 above)	%
Local content %, as calculated in terms of SATS 1286:2011	%

If the bid is for more than one product, the local content percentages for each product contained in Declaration C shall be used instead of the table above.

The local content percentages for each product has been calculated using the formula given in clause 3 of SATS 1286:2011, the rates of exchange indicated in paragraph 3.1 above and the information contained in Declaration D and E.

- (a) I accept that the Procurement Authority/ Institution has the right to request that the local content be verified in terms of the requirements of SATS 1286:2011.
- (b) I understand that the awarding of the bid is dependent on the accuracy of the information furnished in this application. I also understand that the submission of incorrect data, or data that are not verifiable as described in SATS 1286:2011, may result in the Procurement Authority/ Institution imposing any or all of the remedies as provided for in the Policy.

SIGNATURE: _____ **DATE:** _____

WITNESS No. 1 _____ **DATE:** _____

WITNESS No. 2 _____ **DATE:** _____

PROFORMA ANNEXURE C

Annex C

Local Content Declaration - Summary Schedule

DATE SUBMITTED: _____

(21) Tender No.
 (22) Tender description
 (23) Estimated quantity
 (24) Tender quantity
 (25) Tendering Entity name
 (26) Tender Catalogue Item
 (27) Specified level of service (S)

Tender Item no	Lot of Items	Tender price - with local VMC	Estimated required value	Calculation of local content			Local content of Tender Item	Tender summary		
				Tender value - sum of uncompleted imported materials	Imported value	Local value		Total tender value	Total uncompleted imported value	Total required value
(28)	(29)	(30)	(31)	(32)	(33)	(34)	(35)	(36)	(37)	(38)
1										
2										
3										
4										
5										
6										
7										
8										
9										
10										
11										
12										
13										
14										
15										
				(39) Tender value	(40)	(41)	(42)	(43)	(44)	(45)
				(46) Total uncompleted imported material	(47)	(48)	(49)	(50)	(51)	(52)
				(53) Total Tender value and of uncompleted imported material	(54)	(55)	(56)	(57)	(58)	(59)
				(60) Total required material	(61)	(62)	(63)	(64)	(65)	(66)
				(67) Total local content	(68)	(69)	(70)	(71)	(72)	(73)
				(74) Average local content % of tender	(75)	(76)	(77)	(78)	(79)	(80)

Date: _____

T2.2.8 MBD 8: DECLARATION OF BIDDER'S PAST SUPPLY CHAIN MANAGEMENT PRACTICES

- 1.0 This Municipal Bidding Document must form part of all bids invited.
- 2.0 It serves as a declaration to be used by municipalities and municipal entities in ensuring that when goods and services are being procured, all reasonable steps are taken to combat the abuse of the supply chain management system.
- 3.0 The bid of any bidder may be rejected if that bidder, or any of its directors have:
 - a) abused the municipal entity's supply chain management system or committed any improper conduct in relation to such system.
 - b) been convicted for fraud or corruption during the past five years.
 - c) wilfully neglected, reneged on or failed to comply with any government, municipal or other public sector contract during the past five years.
 - d) been listed in the Register for Tender Defaulters in terms of section 29 of the Prevention and Combating of Corrupt Activities Act (No 12 of 2004).
- 4.0 In order to give effect to the above, the following questions must be completed and submitted with the bid.

4.1 Is the bidder or any of its directors listed on the National Treasury's Database of Restricted Suppliers as companies or persons prohibited from doing business with the public sector?

(Companies or persons who are listed on this Database were informed in writing of this restriction by the Accounting Officer / Authority of the institution that imposed the restriction after the audi alteram partem rule was applied.)

The Database of Restricted Suppliers now resides on the National Treasury's website (www.treasury.gov.za) and can be accessed by clicking on its link at the bottom of the home page.

Circle Applicable	
YES	NO

4.1.1 If YES, provide particulars.

.....

.....

4.2 Is the bidder or any of its directors listed on the Register for Tender Defaulters in terms of section 29 of the Prevention and Combating of Corrupt Activities Act (No 12 of 2004)?

The Register for Tender Defaulters can be accessed on the National Treasury's website (www.treasury.gov.za) by clicking on its link at the bottom of the home page.

YES	NO
-----	----

4.2.1 If YES, provide particulars.

.....

.....

4.3 Was the bidder or any of its directors convicted by a court of law (including a court of law outside the Republic of South Africa) for fraud or corruption during the past five years?

YES	NO
-----	----

4.3.1 If YES, provide particulars.

.....

.....

4.4 Does the bidder or any of its directors owe any municipal rates and taxes or municipal charges to the municipality / municipal entity, or to any other municipality / municipal entity, that is in arrears for more than three months?

Circle Applicable	
YES	NO

4.4.1 If YES, provide particulars.

.....

.....

4.5 Was any contract between the bidder and the municipality / municipal entity or any other organ of state terminated during the past five years on account of failure to perform on or comply with the contract?

YES	NO
-----	----

4.5.1 If YES, provide particulars.

.....

.....

Failure to complete this form in full, sign, and return with the tender submission will result in the tender offer being deemed non-responsive.

I, the undersigned, who warrants that they are authorised to sign on behalf of the Tenderer, confirms that the information contained in this form is within my personal knowledge and is to the best of my belief both true and correct.

I accept that, in addition to cancellation of a contract, action may be taken against me should this declaration prove to be false.

NAME (Block Capitals):

Date

SIGNATURE:

.....

.....

T2.2.9 MBD 9: CERTIFICATE OF INDEPENDENT BID DETERMINATION

NOTES

- ¹ Includes price quotations, advertised competitive bids, limited bids and proposals.
- ² Bid rigging (or collusive bidding) occurs when businesses, that would otherwise be expected to compete, secretly conspire to raise prices or lower the quality of goods and / or services for purchasers who wish to acquire goods and / or services through a bidding process. Bid rigging is, therefore, an agreement between competitors not to compete.
- ³ Joint venture or Consortium means an association of persons for the purpose of combining their expertise, property, capital, efforts, skill and knowledge in an activity for the execution of a contract.

- 1.0 This Municipal Bidding Document (MBD) must form part of all **bids**¹ invited.
- 2.0 Section 4 (1) (b) (iii) of the Competition Act No. 89 of 1998, as amended, prohibits an agreement between, or concerted practice by, firms, or a decision by an association of firms, if it is between parties in a horizontal relationship and if it involves collusive bidding (or **bid rigging**).² Collusive bidding is a *pe se* prohibition meaning that it cannot be justified under any grounds.
- 3.0 Municipal Supply Regulation 38 (1) prescribes that a supply chain management policy must provide measures for the combating of abuse of the supply chain management system, and must enable the accounting officer, among others, to:
 - a. take all reasonable steps to prevent such abuse;
 - b. reject the bid of any bidder if that bidder or any of its directors has abused the supply chain management system of the municipality or municipal entity or has committed any improper conduct in relation to such system; and
 - c. cancel a contract awarded to a person if the person committed any corrupt or fraudulent act during the bidding process or the execution of the contract.
- 4.0 This MBD serves as a certificate of declaration that would be used by institutions to ensure that, when bids are considered, reasonable steps are taken to prevent any form of bid rigging.
- 5.0 In order to give effect to the above, the below **Certificate of Independent Bid Determination** must be completed and submitted with the bid.

CERTIFICATE OF INDEPENDENT BID DETERMINATION

I, the undersigned, in submitting the accompanying bid for: Contract **35389-1N**
Herrwood Drive, Umhlanga, Ward 35: Stormwater Attenuation Pond

in response to the invitation for the bid made by: **ETHEKWINI MUNICIPALITY**

do hereby make the following statements that I certify to be true and complete in every respect.

I certify, on behalf of:

that:

(continued on next page)

1. I have read and I understand the contents of this Certificate.
2. I understand that the accompanying bid will be disqualified if this Certificate is found not to be true and complete in every respect.
3. I am authorized by the bidder to sign this Certificate, and to submit the accompanying bid, on behalf of the bidder;
4. Each person whose signature appears on the accompanying bid has been authorized by the bidder to determine the terms of, and to sign, the bid, on behalf of the bidder;
5. For the purposes of this Certificate and the accompanying bid, I understand that the word "competitor" shall include any individual or organization, other than the bidder, whether or not affiliated with the bidder, who:
 - (a) has been requested to submit a bid in response to this bid invitation.
 - (b) could potentially submit a bid in response to this bid invitation, based on their qualifications, abilities or experience.
 - (c) provides the same goods and services as the bidder and/or is in the same line of business as the bidder.
6. The bidder has arrived at the accompanying bid independently from, and without consultation, communication, agreement, or arrangement with any competitor. However, communication between partners in a joint venture or consortium³ will not be construed as collusive bidding.
7. In particular, without limiting the generality of paragraphs 6 above, there has been no consultation, communication, agreement or arrangement with any competitor regarding:
 - (a) prices.
 - (b) geographical area where product or service will be rendered (market allocation).
 - (c) methods, factors or formulas used to calculate prices.
 - (d) the intention or decision to submit or not to submit, a bid.
 - (e) the submission of a bid which does not meet the specifications and conditions of the bid.
 - (f) bidding with the intention not to win the bid.
8. In addition, there have been no consultations, communications, agreements, or arrangements with any competitor regarding the quality, quantity, specifications and conditions or delivery particulars of the products or services to which this bid invitation relates.
9. The terms of the accompanying bid have not been, and will not be, disclosed by the bidder, directly or indirectly, to any competitor, prior to the date and time of the official bid opening or of the awarding of the contract.
10. I am aware that, in addition and without prejudice to any other remedy provided to combat any restrictive practices related to bids and contracts, bids that are suspicious will be reported to the Competition Commission for investigation and possible imposition of administrative penalties in terms of section 59 of the Competition Act No 89 of 1998 and or may be reported to the National Prosecuting Authority (NPA) for criminal investigation and or may be restricted from conducting business with the public sector for a period not exceeding ten (10) years in terms of the Prevention and Combating of Corrupt Activities Act No 12 of 2004 or any other applicable legislation.

Failure to complete this form in full, sign, and return with the tender submission will result in the tender offer being deemed non-responsive.

NAME (Block Capitals): _____

Date

SIGNATURE: _____

T2.2.10 DECLARATION OF MUNICIPAL FEES

Reference is to be made to the **Tender Data: C.2.23 and C.3.13(a)**.

I, the undersigned, do hereby declare that the Municipal fees of:

.....
 (full name of Company / Close Corporation / partnership / sole proprietary/Joint Venture)

(hereinafter referred to as the TENDERER) are, as at the date hereunder, fully paid or an Acknowledgement of Debt has been concluded with the Municipality to pay the said charges in instalments.

The following account details relate to property of the said TENDERER:

<u>Account</u>	<u>Account Number: to be completed by Tenderer</u>											
Consolidated Account												
Electricity												
Water												
Rates												
JSB Levies												
Other												

- If applicable, a copy of a recent (within the past 3 months) Metro Bill is to be provided.

I acknowledge that should the aforesaid Municipal charges fall into arrears, the Municipality may take such remedial action as is required, including termination of any contract, and any payments due to the Contractor by the Municipality shall be first set off against such arrears.

- Where the Tenderer’s place of business or business interests are outside the jurisdiction of eThekweni municipality, a copy of the accounts/ agreements from the relevant municipality are to be provided.
- Where the Tenderer’s Municipal Accounts are part of their lease agreement, then a copy of the agreement, or an official letter to that effect, is to be provided.
- Where a Tenderer’s place of business or business interests are carried out from premises as part of any other agreement, then a copy of the agreement, or an official letter to that effect, is to be provided.

Tenderers are to include, at the back of their tender submission, copies of the above-mentioned account’s, agreements signed with the municipality, lease agreements, or official letters.

Failure to complete this form in full, sign, and return the required documents with the tender submission will result in the tender offer being deemed non-responsive.

I, the undersigned, who warrants that they are authorised to sign on behalf of the Tenderer, confirms that the information contained in this form is within my personal knowledge and is to the best of my belief both true and correct, and that the requested documentation has been included in the tender submission.

NAME (Block Capitals): _____

Date

SIGNATURE: _____

T2.2.11 CONTRACTOR'S HEALTH AND SAFETY DECLARATION

Reference is to be made to Clauses C.2.1(e) and C.2.23 of the Tender Data.

In terms of Clause 5(1)(h) of the OHS Act 1993 Construction Regulations 2014 (referred to as "the Regulations" hereafter), a Principal Contractor may only be appointed to perform construction work if the Client is satisfied that the Principal Contractor has the necessary competencies and resources to carry out the work safely in accordance with the Occupational Health and Safety Act No 85 of 1993 and the OHS Act 1993 Construction Regulations 2014.

To that effect, a person duly authorised by the Tenderer, must complete and sign the declaration hereafter in detail.

Declaration by Tenderer

- 1 I, the undersigned, hereby declare and confirm that I am fully conversant with the Occupational Health and Safety Act No 85 of 1993 (as amended by the Occupational Health and Safety Amendment Act No 181 of 1993), and the OHS Act 1993 Construction Regulations 2014.
- 2 I hereby declare that my company has the competence and the necessary resources to safely carry out the construction work under this contract in compliance with the Construction Regulations and the Employer's Health and Safety Specifications.
- 3 I propose to achieve compliance with the Regulations by one of the following **(Tenderers are to Circle Applicable - Yes or No)**:

Circle Applicable	
Yes	No

- (a) From my own competent resources as detailed in 4(a) hereafter.
- (b) From my own resources still to be appointed or trained until competency is achieved, as detailed in 4(b) hereafter:
- (c) From outside sources by appointment of competent specialist Subcontractors as detailed in 4(c) hereafter:

4 Details of resources I propose:
(Note: Competent resources shall include safety personnel such as a construction supervisor and construction safety officer as defined in Regulation 8, and competent persons as defined in Regulations 9, 10, 11, 12, 13, 14, 16, 17, 20, 21, 22, 23(1), 24, 25, 26, 27, 28 and 29, as applicable).

- (a) Details of the competent and qualified key persons from my company's own resources, who will form part of the contract team:

NAMES OF COMPETENT PERSONS	POSITIONS TO BE FILLED BY COMPETENT PERSONS

(b) Details of training of persons from my company's own resources (or to be hired) who still have to be trained to achieve the necessary competency:

(i) By whom will training be provided?

(ii) When will training be undertaken?

(iii) Positions to be filled by persons to be trained or hired:

(c) Details of competent resources to be appointed as subcontractors if competent persons cannot be supplied from own company:

Name of proposed subcontractor:

Qualifications or details of competency of the subcontractor:

5 I, the undersigned, hereby undertake, if this tender is accepted, to provide, before commencement of the works under the contract, a suitable and sufficiently documented Health and Safety Plan in accordance with Regulation 7(1) of the Construction Regulations, which plan shall be subject to approval by the Client.

6 I, the undersigned, confirm that copies of this company's approved Health and Safety Plan, the Client's Safety Specifications as well as the OHS Act 1993 Construction Regulations 2014 will be provided on site and will at all times be available for inspection by the Principal Contractor's personnel, the Client's personnel, the Employer's Agent, visitors, and officials and inspectors of the Department of Labour.

7 I, the undersigned, hereby confirm that adequate provision has been made in the tendered rates and prices in the Bill of Materials to cover the cost of all resources, actions, training and all health and safety measures envisaged in the OHS Act 1993 Construction Regulations 2014, and that I will be liable for any penalties that may be applied by the Client in terms of the said Regulations (Regulation 33) for failure on the Principal Contractor's part to comply with the provisions of the Act and the Regulations.

8 I, the undersigned, agree that failure to complete and execute this declaration to the satisfaction of the Client will mean that this company is unable to comply with the requirements of the OHS Act 1993 Construction Regulations (2014) and accept that this tender will be prejudiced and may be rejected at the discretion of the Client.

I, the undersigned, who warrants that they are authorised to sign on behalf of the Tenderer, confirms that the information contained in this form is within my personal knowledge and is to the best of my belief both true and correct.

NAME (Block Capitals):

Date

SIGNATURE:

T2.2.12 CSD REGISTRATION REPORT

Reference is to be made to **Tender Data: C.2.1.1(b) and C.2.23.**

The **Tender Data: C.2.1: Eligibility**, requires a Tenderer to be registered, at the time of tender closing, on the **National Treasury Central Supplier Database (CSD)** as a service provider.

CSD Registration Reports can be obtained from the National Treasury’s CSD website at <https://secure.csd.gov.za/Account/Login>.

The following is an example of the printout obtained from the above website.

Note: the printout will contain more than one page.

The screenshot shows the CSD Registration Report interface. At the top left is the logo for the Central Supplier Database for Government. To the right are input fields for 'Report Date:' and 'Report Ran By:'. Below this is a green banner with the text 'CSD REGISTRATION REPORT'. The main content is a table titled 'SUPPLIER IDENTIFICATION' with the following fields:

Supplier number		Have Bank Account	
Is supplier active?		Total annual turnover	
Supplier type		Financial year start date	
Supplier sub-type		Registration date	
Legal name		Created by	
Trading name		Created date	
Identification type		Edit by	
Government breakdown		Edit date	
Business status		Restricted Supplier	
Country of origin		Restriction Last Verification Date	
South African company/CC registration number			

Tenderers are to include, at the back of their tender submission, a printout of their CSD Registration Report. The date of obtaining the CSD printout is to be indicated on the printout and should be on or after the date of advertising of this tender.

Failure to comply will result in the tender offer being deemed non-responsive.

I, the undersigned, who warrants that they are authorised to sign on behalf of the Tenderer, confirms that the information contained in this form is within my personal knowledge and is to the best of my belief both true and correct, and that the requested documentation has been included in the tender submission.

NAME (Block Capitals): _____

Date

SIGNATURE: _____

T2.2.13 CIDB REGISTRATION AND STATUS

Reference is to be made to the **Tender Data: C.2.1.2, C.2.23, and C.3.13(c)**.

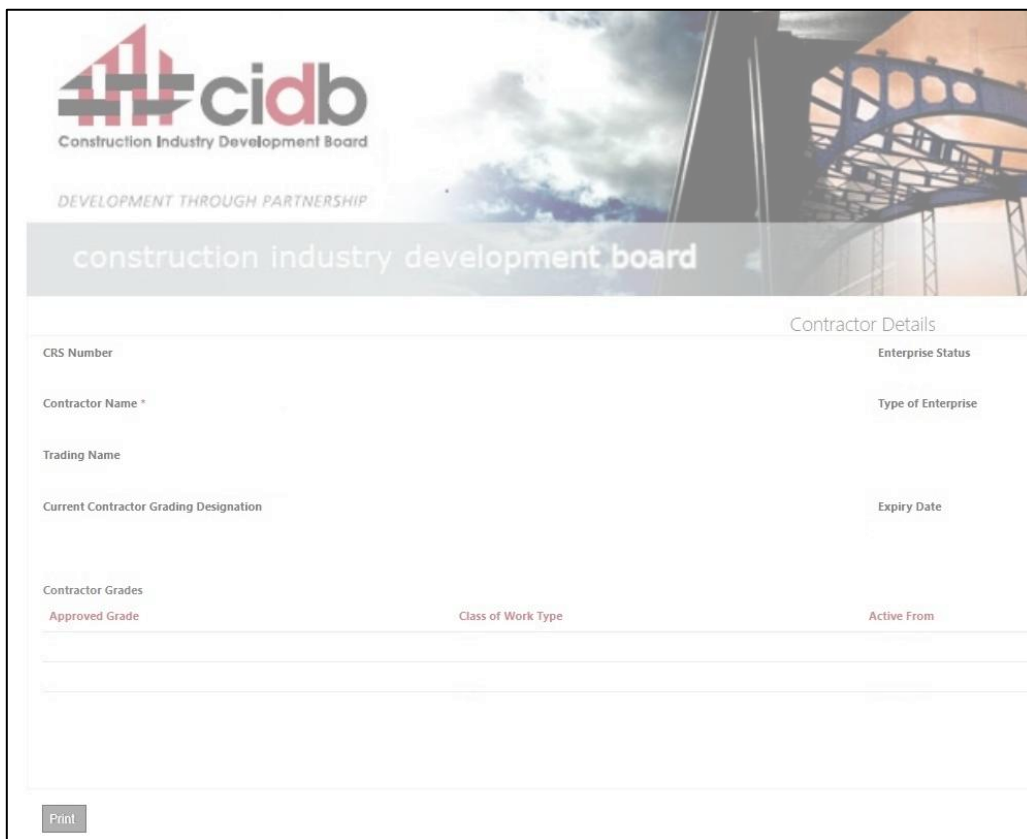
The **Tender Data: C.2.1.1: Eligibility**, requires a Tenderer to be registered, as “Active”, with the CIDB (at time of tender closing), in a contractor grading designation equal to or higher than a contractor grading designation determined in accordance with the sum tendered, or a value determined in accordance with Regulation 25 (1B) or 25(7A) of the Construction Industry Development Regulations.

The required class of construction work is specified in the **Tender Data: C.2.1.2**.

CIDB Registrations can be obtained from the CIDB website at:

<https://portal.cidb.org.za/RegisterOfContractors/>

The following is an example of the printout obtained from the above website using the provided “Print” button.
 Note: the printout may contain more than one page.



Tenderers are to include, at the back of their tender submission, a printout of their CIDB Registration and Status. The date of obtaining the CIDB Registration and Status printout is to be indicated on the printout and should be on or after the date of advertising of this tender.

Failure to comply will result in the tender offer being deemed non-responsive.

I, the undersigned, who warrants that they are authorised to sign on behalf of the Tenderer, confirms that the information contained in this form is within my personal knowledge and is to the best of my belief both true and correct, and that the requested documentation has been included in the tender submission.

NAME (Block Capitals):

Date

SIGNATURE:

T2.2.14 JOINT VENTURES AGREEMENTS

If this tender submission is to be made by an established Joint Venture, the Joint Venture Agreements and Power of Attorney Agreements are to be attached here.

Should the Joint Venture, at the time of submission, not yet be formalised, this form is to be completed in full and signed by all parties to the proposed Joint Venture.

The Lead Partner of the Joint Venture is to sign the **Form of Offer** in Section **C1.1.1**.

INTENT TO FORM A JOINT VENTURE

Should our submission for CONTRACT: **35389-1N** be successful, a Joint Venture will be established by the parties as listed below, as an unincorporated association, with the purposes of securing and executing the Contract, for the benefit of the Members.

Proposed Joint Venture

Joint Venture Title (name):

Represented by (name): Tel:

Lead Partner/ Member 1

Entity Name:

Ownership Interest in JV %: CSD Registration:

CIDB #:

Represented by (name): _____ Signature: _____

Partner/ Member 2

Entity Name:

Ownership Interest in JV %: CSD Registration:

CIDB #:

Represented by (name): _____ Signature: _____

Partner/ Member 3

Entity Name:

Ownership Interest in JV %: CSD Registration:

CIDB #:

Represented by (name): _____ Signature: _____

Note: All requirements for Joint Ventures, as stated elsewhere in this procurement document, must be complied with in full.

T2.2.15 RECORD OF ADDENDA TO TENDER DOCUMENTS

Reference is to be made to the **Tender Data: C.2.6.**

I / We confirm that the following communications received from the Employer or his representative before the date of submission of this tender offer, amending the tender documents, have been taken into account in this tender offer.

ADD.No	DATE	TITLE OR DETAILS
1		
2		
3		
4		
5		
6		
7		
8		
9		
10		

I, the undersigned, who warrants that they are authorised to sign on behalf of the Tenderer, confirms that the information contained in this form is within my personal knowledge and is to the best of my belief both true and correct.

It is also confirmed that the requirements, as stated on the Addenda, have been complied with.

NAME (Block Capitals): _____

Date

SIGNATURE: _____

T2.2.17 PROPOSED ORGANISATION and STAFFING

Refer to Additional Conditions of Tender: T1.2.3.4 for Functionality Points evaluation prompts (if applicable).

The Tenderer should propose the structure and composition of their team i.e. the main disciplines involved, the key staff member / expert responsible for each discipline, and the proposed technical and support staff and site staff.

The roles and responsibilities of each key staff member / expert should be set out as job descriptions. In the case of an association / joint venture / consortium, it should, indicate how the duties and responsibilities are to be shared.

The Tenderer must attach their organization and staffing proposals to this page. (this is to include both the on-site and off-site staffing resources used for this project)

In addition to any lists, this information should also be shown in an organogram format (flow chart) clearly indicating the staff hierarchy and reporting lines, again for on- and off-site resources.

I, the undersigned, who warrants that they are authorised to sign on behalf of the Tenderer, confirms that the information contained in this form is within my personal knowledge and is to the best of my belief both true and correct.

NAME (Block Capitals): _____

Date

SIGNATURE: _____

T2.2.18 **KEY PERSONNEL**

Refer to Additional Conditions of Tender: T1.2.3.4 for Functionality Points evaluation prompts (if applicable).

The Tenderer shall list below the personnel which he intends to utilize on the Works, including key personnel (Contract’s Manager, Site Agent, and Foremen) which may have to be brought in from outside if not available locally.

CATEGORY OF EMPLOYEE	NUMBER OF PERSONS	
	KEY PERSONNEL, PART OF THE CONTRACTOR'S ORGANISATION	KEY PERSONNEL TO BE IMPORTED IF NOT AVAILABLE LOCALLY
Site Agent, Project Managers		
Foremen, Quality Control and Safety Personnel		
Technicians, Surveyors, etc		
Artisans and other Skilled workers		
Plant Operators		
Unskilled Workers		
Others:		
..... ...		

Note: CVs of key personnel may be requested during the contract period.

I, the undersigned, who warrants that they are authorised to sign on behalf of the Tenderer, confirms that the information contained in this form is within my personal knowledge and is to the best of my belief both true and correct.

NAME (Block Capitals): _____

Date _____

SIGNATURE: _____

T2.2.19 EXPERIENCE OF KEY PERSONNEL

Refer to Additional Conditions of Tender: T1.2.3.4 for Functionality Points evaluation prompts (if applicable).

The experience of assigned staff member in relation to the Scope of Work will be evaluated from three different points of view:

- 1) General experience (total duration of professional activity), level of education and training and positions held of each discipline specific team leader.
- 2) The education, training, skills and experience of the Assigned Staff in the specific sector, field, subject, etc which is directly linked to the scope of work.
- 3) The key staff members' / experts' knowledge of issues which the Tenderer considers pertinent to the project e.g. local conditions, affected communities, legislation, techniques etc.

A CV of the contract manager, site agent(s) and general foreman of not more than 2 pages should be attached to this schedule:

Each CV should be structured under the following headings:

- a) Personal particulars
 - name
 - date and place of birth
 - place (s) of tertiary education and dates associated therewith
 - professional awards
- b) Qualifications (degrees, diplomas, grades of membership of professional societies and professional registrations)
- c) Skills
- d) Name of current employer and position in enterprise
- e) Overview of post-graduate / diploma experience (year, organization and position)
- f) Outline of recent assignments / experience that has a bearing on the scope of work

I, the undersigned, who warrants that they are authorised to sign on behalf of the Tenderer, confirms that the information contained in this form is within my personal knowledge and is to the best of my belief both true and correct.

NAME (Block Capitals): _____

Date _____

SIGNATURE: _____

T2.2.21 CONSTRUCTION APPROACH, METHODOLOGY, AND QUALITY CONTROL

Refer to Additional Conditions of Tender: T1.2.3.4 for Functionality Points evaluation prompts (if applicable).

Construction Approach and Methodology

The construction approach and methodology must respond to the Scope of Work and outline the proposed approach to undertake the work showing a detailed programme including health and safety aspects, the use of plant and resources for this Project.

Quality Control

The quality control statement must discuss what tests and control measures are to be employed on site to attain the specified results and is to cover the program associated activities.

The Tenderer must attach their Construction Methodology and Quality Control information to this page.

I, the undersigned, who warrants that they are authorised to sign on behalf of the Tenderer, confirms that the information contained in this form is within my personal knowledge and is to the best of my belief both true and correct.

NAME (Block Capitals): _____

Date

SIGNATURE: _____

T2.2.23 PLANT and EQUIPMENT

Refer to Additional Conditions of Tender: T1.2.3.4 for Functionality Points evaluation prompts (if applicable).

The following are lists of major items of relevant equipment that I / we presently own or lease and will have available for this contract if my / our tender is accepted.

(a) Details of major equipment that is owned by me / us and immediately available for this contract.

DESCRIPTION (type, size, capacity etc)	QUANTITY	YEAR OF MANUFACTURE

Attach additional pages if more space is required

(b) Details of major equipment that will be hired, or acquired for this contract if my / our tender is accepted

DESCRIPTION (type, size, capacity etc)	QUANTITY	HOW ACQUIRED	
		HIRE/ BUY	SOURCE

Attach additional pages if more space is required

The Tenderer undertakes to bring onto site without additional cost to the Employer any additional plant not listed but which may be necessary to complete the contract within the specified contract period.

I, the undersigned, who warrants that they are authorised to sign on behalf of the Tenderer, confirms that the information contained in this form is within my personal knowledge and is to the best of my belief both true and correct.

NAME (Block Capitals): _____

Date

SIGNATURE: _____

T2.2.24 CONTRACTOR'S HEALTH AND SAFETY PLAN

Refer to Additional Conditions of Tender: T1.2.3.4 for Functionality Points evaluation prompts (if applicable).

At tender stage only a brief overview (**to be attached to this page**) of the Tenderers perception on the safety requirements for this contract will be adequate.

Only the successful Tenderer shall submit separately the Contractor's Health and Safety Plan as required in terms of Regulation 7 of the Occupational Health and Safety Act 1993 Construction Regulations 2014.

The detailed safety plan will take into consideration the site specific risks as mentioned under C.3: Project Specification. A generic plan will not be acceptable.

I, the undersigned, who warrants that they are authorised to sign on behalf of the Tenderer, confirms that the information contained in this form is within my personal knowledge and is to the best of my belief both true and correct.

NAME (Block Capitals): _____

Date

SIGNATURE: _____

PART C1: AGREEMENT AND CONTRACT DATA

C1.1: FORM OF OFFER AND ACCEPTANCE

C1.1.1: OFFER

The Employer, identified in the Acceptance signature block, has solicited offers to enter into a contract in respect of the following works:

Contract No: **35389-1N**

Contract Title: **Herrwood Drive, Umhlanga, Ward 35: Stormwater Attenuation Pond**

The Tenderer, identified in the Offer signature block below, has examined the documents listed in the Tender Data and addenda thereto as listed in the Tender Schedules, and by submitting this Offer has accepted the Conditions of Tender.

By the representative of the Tenderer, deemed to be duly authorised, signing this part of this Form of Offer and Acceptance, the Tenderer offers to perform all of the obligations and liabilities of the Contractor under the Contract including compliance with all its terms and conditions according to their true intent and meaning for an amount to be determined in accordance with the Conditions of Contract identified in the Contract Data.

*** The offered total of the prices inclusive of Value Added Tax is:**

R..... (In words
.....)

This Offer may be accepted by the Employer by signing the Acceptance part of this Form of Offer and Acceptance and returning one copy of this document to the Tenderer before the end of the period of validity stated in the Tender Data, whereupon the Tenderer becomes the party named as the Contractor in the Conditions of Contract identified in the Contract Data.

For the Tenderer:

* **Name of Tenderer** (*organisation*) :

* **Signature** (*of person authorized to sign the tender*) :

* **Name** (*of signatory in capitals*) :

Capacity (*of Signatory*) :

Address :

:

Telephone :

Witness:

Signature : **Date** :

Name (*in capitals*) : :

Notes:

* **Indicates what information is mandatory.**

Failure to complete the mandatory information and sign this form will invalidate the tender.

C1.1: FORM OF OFFER AND ACCEPTANCE

C1.1.2: FORM OF ACCEPTANCE

This Form will be completed by the Employer

By signing this part of the Form of Offer and Acceptance, the Employer identified below accepts the Tenderer's Offer. In consideration thereof, the Employer shall pay the Contractor the amount due in accordance with the Conditions of Contract identified in the Contract Data. Acceptance of the Tenderer's Offer shall form an agreement between the Employer and the Tenderer upon the terms and conditions contained in this Agreement and in the Contract that is the subject of this Agreement.

The terms of the contract are contained in:

- Part C1 : Agreement and Contract Data, (which includes this Agreement)
- Part C2 : Pricing Data, including the Bill of Quantities
- Part C3 : Scope of Work
- Part C4 : Site Information

and the schedules, forms, drawings and documents or parts thereof, which may be incorporated by reference into Parts C1 to C4 above.

Deviations from and amendments to the documents listed in the Tender Data and any addenda thereto listed in the Tender Schedules as well as any changes to the terms of the Offer agreed by the Tenderer and the Employer during this process of offer and acceptance, are contained in the Schedule of Deviations attached to and forming part of this Agreement. No amendments to or deviations from said documents are valid unless contained in this Schedule, which must be duly signed by the authorised representatives of both parties.

The Tenderer shall within two weeks after receiving a completed copy of this Agreement, including the Schedule of Deviations (if any), contact the Employer's agent (whose details are given in the Contract Data) to arrange the delivery of any bonds, guarantees, proof of insurance and any other documentation to be provided in terms of the Conditions of Contract identified in the Contract Data at, or just after, the date this Agreement comes into effect. Failure to fulfil any of these obligations in accordance with those terms shall constitute a repudiation of this Agreement.

Notwithstanding anything contained herein, this Agreement comes into effect on the date when the Tenderer receives one fully completed original copy of this document, including the Schedule of Deviations (if any). Unless the Tenderer (now Contractor) within five days of the date of such receipt notifies the Employer in writing of any reason why he cannot accept the contents of this Agreement, this Agreement shall constitute a binding contract between the parties.

Signature (*person authorized to sign the acceptance*) :

Name (*of signatory in capitals*) :

Capacity (*of Signatory*) :

Name of Employer (*organisation*) :

Address :

:

Witness:

Signature : **Date** :

Name(*in capitals*) : :

C1.1: FORM OF OFFER AND ACCEPTANCE
C1.1.3: SCHEDULE OF DEVIATIONS

This form will be completed by THE EMPLOYER and ONLY THE SUCCESSFUL TENDERER

- 1. **Subject** :
- Details** :
-
- 2. **Subject** :
- Details** :
-
- 3. **Subject** :
- Details** :
-

By the duly authorised representatives signing this Schedule of Deviations, the Employer and the Tenderer agree to and accept the foregoing Schedule of Deviations as the only deviations from and amendments to the documents listed in the Tender Data and addenda thereto as listed in the Tender Schedules, as well as any confirmation, clarification or change to the terms of the offer agreed by the Tenderer and the Employer during this process of offer and acceptance.

It is expressly agreed that no other matter whether in writing, oral communication or implied during the period between the issue of the tender documents and the receipt by the Tenderer of a completed signed copy of this Agreement shall have any meaning or effect in the contract between the parties arising from this Agreement.

FOR THE TENDERER

FOR THE EMPLOYER

.....	Signature
.....	Name (<i>in capitals</i>)
.....	Capacity
.....	Name and Address of
.....	Organisation
.....	
.....	Witness Signature
.....	Witness Name
.....	Date

C1.2: CONTRACT DATA

C1.2.1 CONDITIONS OF CONTRACT

C1.2.1.1 GENERAL CONDITIONS OF CONTRACT

The Conditions of Contract are the General Conditions of Contract for Construction Works (2015 3rd Edition) (GCC 2015) published by the South African Institution of Civil Engineering. Copies of these conditions of contract may be obtained from the South African Institution of Civil Engineering (Tel: 011-805-5947, Fax: 011-805-5971, E-mail: civilinfo@saice.org.za).

The Contract Data (including variations and additions) shall amplify, modify, or supersede, the GCC 2015 to the extent specified below, and shall take precedence and shall govern.

Each item of data given below is cross-referenced to the clause in the GCC 2015 to which it mainly applies.

C1.2.2 CONTRACT DATA

C1.2.2.1 DATA TO BE PROVIDED BY THE EMPLOYER

1.1.1.13 The **Defects Liability Period**, from the date of the Certificate of Completion, is **1 Year**

1.1.1.14 The **time for achieving Practical Completion**, from the Commencement Date is **16 Weeks**. The period as stated in 5.3.2, and the 7 days referred to in 5.3.3, are included in the above time for achieving Practical Completion. The special non-working days as stated in 5.8.1 are excluded from the above time for achieving Practical Completion.

1.1.1.15 The Employer is the eThekweni Municipality as represented by:
Deputy Head: **Coastal, Stormwater and Catchment Management**

1.2.1.2 The address of the Employer is:
Physical: Engineering Unit, 166 K.E. Masinga Road, Durban, 4001
Postal: Engineering Unit, P O Box 680, Durban, 4000
Telephone: 031-311-7323 (t)
E-Mail: Randeer.Kasserchun@durban.gov.za

1.1.1.16 The **name of the Employer's Agent** is Gregory Williams

1.2.1.2 The address of the Employer' Agent is:
Physical: Engineering Unit, 166 K.E. Masinga Road, Durban, 4001
Postal: Engineering Unit, P O Box 680, Durban, 4000
Telephone: 031-311-7960 (t)
E-Mail: Gregory.Williams@durban.gov.za

1.1.1.26 The **Pricing Strategy** is by **Re-measurement Contract**.

3.2.3 The Employer's Agent shall obtain the **specific approval of the Employer** before executing any of his functions or duties according to the following Clauses of the General Conditions of Contract:

- 6.3: Council approval in order to authorise any expenditure in excess of the Tender Sum plus **15%** contingencies.

4.11.1 To carry out and complete the works, the Contractor shall employ a competent Site Agent and Foreman as part of the key staff.

- 5.3.1 The **documentation required** before commencement with Works execution are:
- Health and Safety Plan (refer to Clause 4.3)
 - Initial Programme (refer to Clause 5.6)
 - Security (refer to Clause 6.2)
 - Insurance (refer to Clause 8.6)
 - CV(s) of Key Site Staff (refer to Clause 4.11.1)
 - Sub-Contracting Implementation Plan
 - If required to be registered, in terms of the Occupational Injuries and Diseases Act (130 of 1993 as amended), the Contractor is to supply proof of being registered and in good standing with the compensation fund by submitting a valid Letter of Good Standing from the Compensation Commissioner. Should the Contractor's Letter of Good Standing be expired, but an application for renewal has been made, the Contractor is to submit the expired Letter of Good Standing AND proof of an application for renewal.
- 5.3.2 The **time to submit the documentation** required before commencement with Works is **28 Days**.
- 5.3.3 Add the following paragraph:
- “If a construction work permit, in terms of Clause 3(1) of the Construction Regulations (2014), is applicable, the instruction to commence carrying out of the works may only be issued once the construction work permit has been obtained by the Employer's Agent. If a construction work permit is applicable, the contractor shall allow for a minimum period of 37 days, after the submission (or re-submission) of the documentation referred to in Clause 5.3.1., for the issuing of the construction work permit.”
- 5.4.2 The access and possession of Site shall not be exclusive to the Contractor but as set out in the Site Information.
- 5.8.1 The **non-working days** are **Saturdays and Sundays**.
- (5.1.1) The **special non-working** days are:
- All statutory holidays as declared by National or Regional Government.
 - The year-end break:
 - Commencing on the first working day after 15 December.
 - Work resumes on the first working day after 5 January of the next year.
- 5.8.1 Delete the words “sunset and sunrise” and replace with “17:00 and 07:00”.
- 5.12.2.2 **Abnormal Climatic Conditions (Rain Delays)** - The numbers of days per month, on which work is expected not to be possible as a result of rainfall, for which the Contractor shall make provision, is given in the table below. During the execution of the Works, the Employer's Agent's Representative will certify a day lost due to rainfall only if at least 75% of the work force and plant on site could not work during that specific working day.

Extension of time as a result of rainfall shall be calculated monthly being equal to the number days certified by the Employer's Agent's Representative as lost due to rainfall, less the number of days allowed for as in table below, which could result in a negative figure for certain months. The total extension of time for which the Contractor may apply, shall be the cumulative algebraic sum of the monthly extensions. Should the sum thus obtained be negative, the extension of time shall be taken as NIL.

<u>Month</u>	<u>Days Lost</u>	<u>Average Rainfall</u>	<u>Month</u>	<u>Days Lost</u>	<u>Average Rainfall</u>
January	4*	134	July	1	39
February	3	113	August	2	62

March	3	120	September	2	73
April	2	73	October	3	98
May	2	59	November	3	108
June	1	28	December	1*	102
TOTAL	27	1009mm	* = The number of working days lost allows for the annual statutory Construction holiday in December and January of each year.		

5.13.1 The **penalty for delay** in failing to complete the Works is **R 2500.00** (per Day).

5.14.1 The **requirements for achieving Practical Completion** will be determined by the Employer's Agent (in consultation with the Contractor) and recorded in the minutes of the first Site Meeting / Handover Meeting. (Refer to 1.1.1.24 for a generic definition.) The requirements are to be regularly reviewed with respect to any variations to the Contract.

5.16.3 The **latent defect liability** period is **10 Years**.

6.2.1 **Security (Performance Guarantee)**: Delete the word "selected" and replace it with "stated".

The liability of the Performance Guarantee shall be as per the following table:

Value of Contract (incl. VAT)	Performance Guarantee Required
Less than or equal to R 1m	Nil
Greater than R 1m and less than or equal to R 10m	5% of the Contract Sum
Greater than R 10m	10% of the Contract Sum

6.5.1.2.3 The **percentage allowance** to cover overhead charges for daywork are as follows:

- **80%** of the gross remuneration of workmen and foremen actually engaged in the daywork;
- **20%** on the net cost of materials actually used in the completed work.

No allowance will be made for work done, or for materials and equipment for which daywork rates have been quoted at tender stage.

6.8.2 **Contract Price Adjustment Factor**: The value of the certificates issued shall be adjusted in accordance with the Contract Price Adjustment Schedule (GCC 2015 - page 86) with the following Indices / Descriptions / Coefficients:

- The proportion not subject to adjustment: **x = 0.10**.
- The base month will be the month prior to the month in which tenders close.
- The Index for, **Plant, Materials, and Fuel** shall be based on **2023 = 100**.
- The Index for **Labour** shall be based on **2024 = 100**.

	STATS SA Statistical Release	Table	Description	Coefficient
• “L” is the “Labour Index”	P0141	Table A	Geographic Indices; CPI per Province; Kwa-Zulu Natal	a = 0.28
• “P” is the • “Contractor’s Equipment Index”	P0151.1	Table 4	Plant and Equipment	b = 0.28
• “M” is the “Materials Index”	P0151.1	Table 6	Civil Engineering Material (excluding bitumen)	c = 0.38
• “F” is the “Fuel Index”	P0142.1	Table 1	Coke, petroleum, chemical, rubber and plastic products; Coal and petroleum products; Diesel	d = 0.06

6.8.3 Price adjustments for **variation in the cost of the special material(s)** listed below, will be allowed.

Bitumen - escalation will be calculated using the “Rise and Fall” method as determined by the Employer. The base price for bitumen on this contract shall be the ruling price of 50/70 grade bitumen based on the **RUBIS Asphalt South Africa List Selling Price** for Penetration Grade Bitumen, seven (7) days prior to the closing date of tenders.

6.10.1.5 The **percentage advance** on materials not yet built into the Permanent Works is **80%**.

The **percentage advance** on Plant not yet supplied to Site: **Not Required**

6.10.3 **Retention Money:** Delete the word “selected”.

The percentage retention on the amounts due to the Contractor is 10%.

The limit of “retention money” is 5% of the Contract Sum.

Should the Contract Price exceed the Contract Sum then the limit of “retention money” is 5% of the Contract Price.

Interest will not be paid on retention withheld by the Employer.

8.6.1.1.2 The **value of Plant and materials** supplied by the Employer to be included in the insurance sum: **Not Required**.

8.6.1.1.3 The **amount to cover professional fees** for repairing damage and loss to be included in the insurance sum: **Not Required**.

8.6.1.2 **SASRIA Coupon Policy** for Special Risks to be issued in joint names of Council and Contractor for the full value of the works (including VAT).

8.6.1.3 The limit of indemnity for **liability insurance: R 10,000,000**.

8.6.1.4 **Ground Support Insurance:**

- Minimum amount for any one occurrence, unlimited as to the number of occurrences, against any claim for damages or loss caused by vibration and / or removal of lateral support: **R 1,000,000**.
- Maximum first excess: **R 100,000**.

8.6.1.5 Furthermore, the insurance cover effected by the Contractor shall meet the following requirements:

Third Party Insurance (Public Liability)

- Minimum amount for any one occurrence, unlimited as to the number of occurrences, for the period of the contract, inclusive of the maintenance period: **R 10,000,000.**
- Consequential loss to be covered by policy: **Yes**
- Liability section of policy to be extended to cover blasting: **Nil.**
- Maximum excess per claim or series of claims arising out of any one occurrence: **R20,000.**

Principal's own surrounding Property Insurance

- Minimum amount for any one occurrence unlimited as to the number of occurrences against any claim for damage which may occur to the Council's own surrounding property: **Nil.**
- Maximum first excess: **Nil.**

Insurance of Works

- Minimum amount for additional removal of debris (no damage): **Nil.**
- Minimum amount for temporary storage of materials off site, excluding Contractor's own premises: **Nil.**
- Minimum amount for transit of materials to site: **Nil.**

8.6.5 **Approval by Employer:** At the end of the sub-clause, add the following paragraph:

"Except where otherwise provided in the Special Conditions of Contract, the insurance cover effected by the Contractor in terms of this clause shall not carry a first loss amount greater than those set out below:

Contract Price	First Loss
Less than R 100,000	R 5,000
R 100,000 to R 500,000	R 10,000
R 500,000 to R 1,000,000	R 20,000
R 1,000,000 to R 2,000,000	R 30,000
R 2,000,000 to R 4,000,000	R 40,000
Greater than R 4,000,000	R 50,000

The insurance policy shall contain a specific provision whereby cancellation of the policy prior to the end of the period referred to in Cause 8.2.1 cannot take place without the prior written approval of the Employer. "

10.7.1 Failing ad-hoc adjudication, the determination of disputes shall be by arbitration.

C1.2.2.2 DATA TO BE PROVIDED BY CONTRACTOR

1.1.1.9 The legal name of Contractor is:

.....
.....
.....
.....

1.2.1.2 The Physical address of the Contractor is:

.....
.....
.....
.....

The Postal address of the Contractor is:

.....
.....
.....
.....

The contact numbers of the Contractor are:

Telephone:

Fax:

The E-Mail address of the Contractor is:

.....

C1.2.3 ADDITIONAL CONDITIONS OF CONTRACT

C1.2.3.1 COMMUNITY LIAISON OFFICER

The Ward Councillor(s) in whose ward(s) work is to be done will, collectively, identify a community liaison officer (CLO) for the project and make the person known to the Contractor within two days of being requested to do so. The Contractor will be required to enter a written contract with the CLO that specifies:

- The hours of work and the wage rate of the CLO (200% of the Civil Engineering Industry minimum wage).
- The duration of the appointment.
- The duties to be undertaken by the CLO which could include:
 - Assisting in all respects relating to the recruitment of local labour.
 - Acting as a source of information for the community and councillors on issues related to the contract.
 - Keeping the Contractor advised on community issues and issues pertaining to local security.
 - Assisting in setting up any meetings or negotiations with affected parties.
 - Keeping a written record of any labour or community issue that may arise.
 - Any other duties that may be required by the Contractor.

Responsibility for the identification of a pool of suitable labour shall rest with the CLO, although the Contractor shall have the right to choose from that pool. The Contractor shall have the right to determine the total number labourers required at any one time and this may vary during the contract.

The Contractor shall have the right to replace labour that is not performing adequately. Should such occasion arise, it must be done in conjunction with the CLO.

Payment: The CLO will be reimbursed from the PC Sum item in the Preliminary & General Section of the Bill of Quantities.

C1.2.3.2 EMPLOYMENT OF LOCAL LABOUR

It is a condition of contract that the contractor will be required to employ local labour as specified in eThekweni Council Policy "The use of CLOs and Local Labour". The contractor will be required to ensure that a minimum of 50% of the labour force is made up of local labour. For the purposes of this contract, "Local labour" will be deemed to be any **persons who reside within Ward 35**. The contractor will be required to provide proof of authenticity of local labour. Signed confirmation by the appointed CLO will suffice for this.

No additional costs will be entertained due to this Particular Specification. The contractor will remain responsible for providing proper supervision of all labour and will be responsible for the quality of work produced.

C1.2.3.3 SUB-CONTRACTING

It is a condition of contract that the contractor must allow for a minimum of **20%** of the contract value (excluding PC Sum items and Fixed Cost allowances) to be subcontracted to contractors who are **>51%** owned by Black People. Proof of payment to the subcontractors will be required to verify that the minimum has been achieved.

The penalty for not achieving the specified Sub-Contracting Goal will be 0.5% of the contract value (excluding PC Sum items and Fixed Cost allowances) for every 1% not achieved.

C1.2.3.4 FTE (Full Time Equivalent) EMPLOYMENT INFORMATION

It is a condition of contract that the Contractor supplies the Employer's Agent's Representative with information in respect of the employment of all foremen, artisans and Labour (skilled and unskilled) employed to work on this contract. The information required is:

- Initials (per ID doc)
- Last Name (per ID doc)
- ID Number
- Disability (y / n)
- Education Level

Level 1 Unknown	Level 2 No Schooling	Level 3 Grade 1-3	Level 4 Grade 4	Level 5 Grade 5-6
Level 6 Grade 7-8	Level 7 Grade 9	Level 8 Grade 10-11	Level 9 Grade 12	Level 10 Post Matric

- Category of Employment

Category A: Employed as Local Labour for this contract only Category B: Temporarily employed by the Contractor Category C: Permanently employed by the Contractor
--

In addition, the following information is required in respect of each person listed above, on a monthly basis:

- Number of days worked during the month;
- Daily wage rate;
- Number of training days during the month.

The information is to be forwarded in a format acceptable to the Employer's Agent's Representative, but preferably in the form of an emailed EXCEL file (an original file, to be used as a template, will be issued to the Contractor). Contractors without computer facilities will be required to submit a hard copy of the information in a format as agreed to between the Contractor and the Employer's Agent's Representative.

In addition to the tax invoice, to be submitted by the Contractor with his monthly statement, mentioned in Clause 6.10.4 of GCC 2015, the Employer reserves the right to withhold payment until the monthly FTE information has been forwarded to the Employer's Agent's Representative. No additional payment for complying with the above will be made and the Contractor is to make allowance for complying through the time related P & G items (sum) under Part AA: Preliminaries, of the Bill of Quantities.

C1.2.3.5 PERFORMANCE MONITORING OF SERVICE PROVIDERS

[For contract awards over R10m] The Contractor shall be subjected to "Performance Monitoring" assessments in terms of the applicable Section (S.53) of the Employer's Supply Chain Management Policy.

Key Performance Indicators (KPIs) are specified in the C3: Scope of Works, or will be discussed and agreed with the Contractor before commencement of the contract.

C1.2.3.6 EXCEPTED RISKS (Clause 8.3)

Pursuant to Clause 8.3 of the Conditions of Contract (GCC 2015), the Employer shall not be liable for the payment of standing time costs as a result of the occurrence of any of the "Excepted Risks" as defined under Clause 8.3.

However, the Employer shall reimburse the Contractor in respect of plant de-establishment and re-establishment costs as a result of "Excepted risks" when a written instruction to de-establish is issued to the Contractor.

C2.1: PRICING ASSUMPTIONS / INSTRUCTIONS

C2.1.1 GENERAL

The Bill of Quantities forms part of the Contract Documents and must be read and priced in conjunction with all the other documents comprising the Contract Documents (refer to C.1.2 of the Tender Data).

C2.1.2 PRICING INSTRUCTIONS AND DESCRIPTION OF ITEMS IN THE SCHEDULE

Measurement and payment shall be in accordance with the relevant provisions of **Clause 8 of each of the Standard Engineering Specifications** referred to in the Scope of Work. The Preliminary and General items shall be measured in accordance with the provisions of **C2.1.8**.

The descriptions of the items in the Bill of Quantities are for identification purposes only and comply generally with those in the Standard Engineering Specification.

Clause 8 of each Standard Engineering Specification, read together with the relevant clauses of the Scope of the works, set out what ancillary or associated work and activities are included in the rates for the operations specified. Should any requirements of the measurement and payment clause of the applicable Standard Engineering Specification, or the Scope of the works, conflict with the Bill of Quantities, the requirements of the Standard Engineering Specification or Scope of the work, as applicable, shall prevail.

C2.1.3 QUANTITIES REFLECTED IN THE SCHEDULE

The quantities given in the Bill of Quantities are estimates only, and subject to re-measuring during the execution of the work. The Contractor shall obtain the Employer's Agent's detailed instructions for all work before ordering any materials or executing work or making arrangements for it.

The Works as finally completed in accordance with the Contract shall be measured and paid for as specified in the Bill of Quantities and in accordance with the General and Special Conditions of Contract, the Specifications and Project Specifications and the Drawings. Unless otherwise stated, items are measured net in accordance with the Drawings, and no allowance

has been made for waste.

The validity of the contract will in no way be affected by differences between the quantities in the Bill of Quantities and the quantities finally certified for payment.

C2.1.5 MONTHLY PAYMENTS

Unless otherwise specified in the Specifications and Project Specifications, progress payments in Interim Certificates, referred to in **Clause 6.10.1 of the General Conditions of Contract**, in respect of "sum" items in the Bill of Quantities shall be by means of interim progress instalments assessed by the Employer's Agent and based on the measure in which the work actually carried out relates to the extent of the work to be done by the Contractor.

C2.1.4 PROVISIONAL SUMS / PRIME COST SUMS

Where Provisional Sums or Prime Cost sums (PC Sum) are provided for items in the Bill of Quantities, payment for the work done under such items will be made in accordance with **Clause 6.6 of the General Conditions of Contract**. The Employer reserves the right, during the execution of the works, to adjust the stated amounts upwards or downwards according to the work actually done under the item, or the item may be omitted altogether, without affecting the validity of the Contract.

The Tenderer shall not under any circumstances whatsoever delete or amend any of the sums inserted in the "Amount" column of the Bill of Quantities and in the Summary of the Bill of Quantities unless ordered or authorized in writing by the Employer before closure of tenders. Any unauthorized changes made by the Tenderer to provisional items in the schedule, or to the provisional percentages and sums in the Summary of the Bill of Quantities, will be treated as arithmetical errors.

C2.1.6 PRICING OF THE BILL OF QUANTITIES

The prices and rates to be inserted by the Tenderer in the Bill of Quantities shall be the full inclusive prices to be paid by the Employer for the work described under

the several items, and shall include full compensation for all costs and expenses that may be required in and for the completion and maintenance during the defects liability period of all the work described and as shown on the drawings as well as all overheads, profits, incidentals and the cost of all general risks, liabilities and obligations set forth or implied in the documents on which the Tender is based.

Each item shall be priced and extended to the "Total" column by the Tenderer, with the exception of the items for which only rates are required (Rate Only), or items which already have Prime Cost or Provisional Sums affixed thereto. If the Contractor omits to price any items in the Bill of Quantities, then these items will be considered to have a nil rate or price.

All items for which terminology such as "inclusive" or "not applicable" have been added by the Tenderer will be regarded as having a nil rate which shall be valid irrespective of any change in quantities during the execution of the Contract.

All rates and amounts quoted in the Bill of Quantities shall be in Rands and Cents and shall include all levies and taxes (other than VAT). VAT will be added in the Summary of the Bill of Quantities.

C2.1.7 "RATE ONLY" ITEMS

The Tenderer shall fill in rates for all items where the words "Rate Only" appear in the "Total" column. "Rate Only" items have been included where:

- (a) an alternative item or material is contemplated;
- (b) variations of specified components in the make-up of a pay item may be expected; and
- (c) no work under the item is foreseen at tender stage but the possibility that such work may be required is not excluded.

For "Rate Only" items no quantities are given in the "Quantity" column but the quoted rate shall apply in the event of work under this item being required. The Tenderer shall however note that in terms of the

Tender Data the Tenderer may be asked to reconsider any such rates which the Employer may regard as unbalanced.

C2.1.8 PRELIMINARY AND GENERAL

The Preliminary and General Section is provided to cover the Contractor's expenses incurred in complying with the requirements of the tender documents and consists of the following parts:

- Part AA: Preliminaries
- Part AB: General Specifications
- Part AH: Occupational Health and Safety

Fixed Charge Items: Each item should be priced separately and, subject to the Engineer certifying in terms of **Clause 6.7 of the General Conditions of Contract** that the work has been done, payment will be made as follows:

- (i) the total amount due when the certified value fixed charge items in this section is less than 5% of the net contract price;
- (ii) when the certified value of fixed charge items in this section is greater than 5% of the net contract price, payment will be limited to 5% of the net contract price. The remainder will be paid when the value of the work done under the contract, excluding the value of fixed charge items in this section, is greater than 50% of the net contract price, excluding the value of fixed charge items in this section.

Time Related Items: Any Time Related items not priced shall be deemed to be covered by the prices of other items in the section.

Payment of Time Related items in this section will be made throughout the contract period, the amount per month being the value of the item divided by the completion in months or, if specified in weeks, the equivalent number of months, in terms of **Clause 5.5 of the General Conditions of Contract**. The final monthly increment will only be paid upon the issue of a completion certificate.

C2.2: BILL OF QUANTITIES

The Bill of Quantities follows and comprises of 12 pages. The pages are numbered BoQ 1 to BoQ 12

PART C3: SCOPE OF WORK

	<u>PAGE</u>	
C3.1	PROJECT DESCRIPTION AND SCOPE OF CONTRACT	78
C3.2	PROJECT SPECIFICATIONS	82
	PS.1 Programme, Method of Work, and Accommodation of Traffic	
	PS.2 Services	
	PS.3 Watermains	
	PS.4 Sewers	
	PS.5 Stormwater	
	PS.6 Electrical Plant	
	PS.7 Telkom S.A. Limited / Neotel Plant	
	PS.8 CCTV Plant	
	PS.9 Management of the Environment	
	PS.10 Occupational Health and Safety	
C3.3	STANDARD SPECIFICATIONS	92
	C3.3.1 Listing of the Standard Specifications	
	C3.3.2 Amendments to the Standard Specifications	
C3.4	PARTICULAR SPECIFICATIONS	95
	C3.4.1 Part AH - OHS Act 1993 Safety Specification (2014)	
	C3.4.2 Standard Environmental Management Plan for Civil Engineering Construction Works	
C3.5	CONTRACT AND STANDARD DRAWINGS	96
	C3.5.1 Contract Drawings / Details	
	C3.5.2 Standard Drawings	
C3.6	ANNEXURES	97

C3.1: PROJECT DESCRIPTION AND SCOPE OF CONTRACT

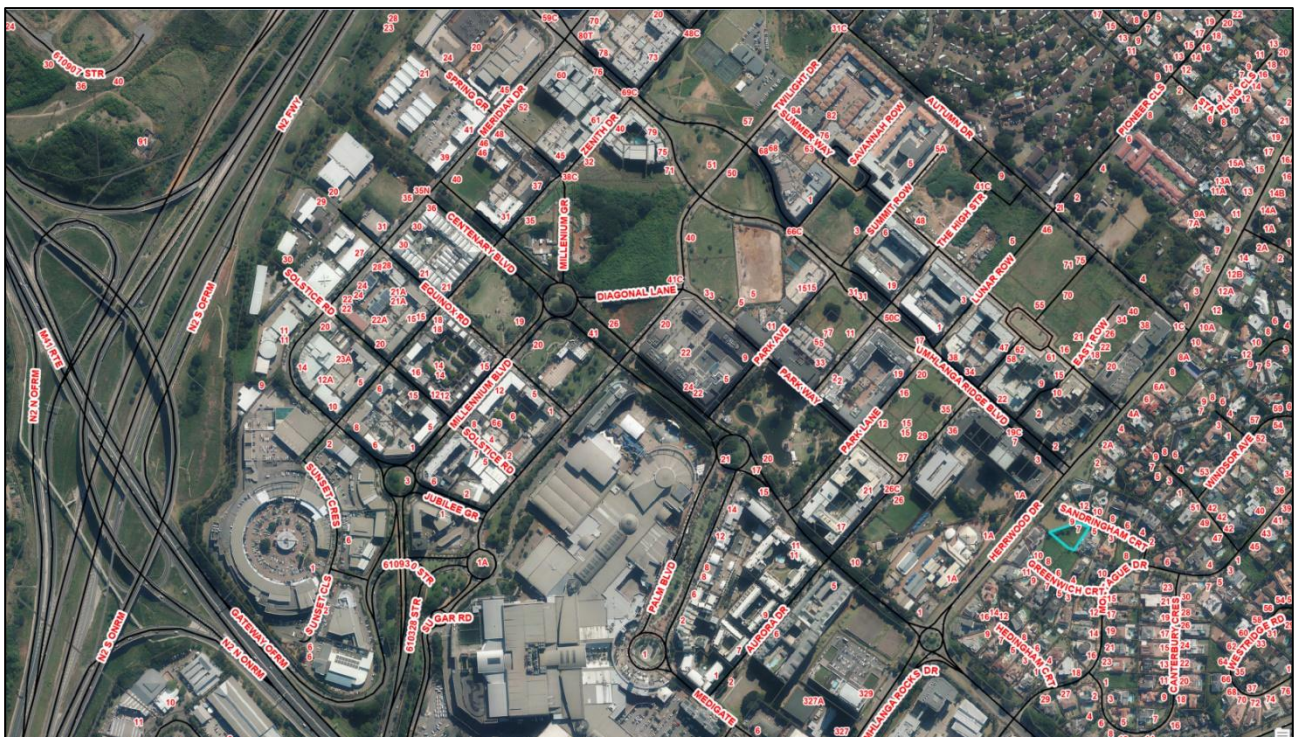
C3.1.1 Description of Works

Herrwood Drive Stormwater Attenuation Pond

Scope of works:

- Traffic control and diversions
- Removal of existing stormwater line and manholes
- Stormwater diversion
- Site Clearance of vacant land.
- Saw cutting of road edges
- Removal of roadway layers along the pipeline route
- Earthworks for pipe trenches
- Supply lay and weld HDPE stormwater line.
- Construction of Manholes as per design
- Bulk Earthworks for Attenuation Pond including berms
- Installation of Geofabric blanket
- Vegetation of Site to ensure erosion protection.
- Road reinstatement.
- Reinstate of ground surface and sidewalks.

C3.1.2 Description of Site and Access



The site can be assessed from N2. Head northeast on N2.
Take exit 182 for M41 E toward uMhlanga
Merge onto M41
Take Ridgeside Drive exit
Left to merge onto uMhlanga Rock Dr. /M12
Merge onto Umhlanga Rocks Dr/M12
At the roundabout Take 2nd exit stay on Umhlanga Rocks Dr./M12
At the roundabout Take 3rd exit and stay on Umhlanga Rocks Dr/M12
Left onto Montague Dr.
Left onto Sandringham Court

C3.1.3 Nature of Ground and Subsoil Conditions

N/A

Title	Herrwood Drive Stormwater Attenuation Pond
Function and broad outline of contents	The project aims to reduce flooding in the Herrwood Drive catchment by improving stormwater management and addressing existing infrastructure capacity constraints. The scope includes upsizing the stormwater pipeline from Herrwood Drive to Sandringham Court, constructing an attenuation pond with an earth berm at 7 Sandringham Court, and installing inlet and outlet structures to manage flows. Associated works include site clearance, pipeline installation, manhole construction, and reinstatement of roads and surrounding areas.

TOPIC	COMMENTARY
Client's / employer's objectives	The client aims to mitigate flooding within the Herrwood Drive catchment by addressing existing stormwater infrastructure constraints. To accommodate increased runoff from the road upgrade and associated development while preventing downstream property damage.
Description of the services	The works involve the construction of upgraded stormwater infrastructure, including installation of larger diameter pipelines and manholes to improve flow capacity. This includes bulk earthworks to form the attenuation pond and berm, installation of inlet and outlet structures, and implementation of erosion protection measures. The scope also covers site clearance, traffic accommodation, and reinstatement of affected roads and surfaces.
Extent of the services	Works cover 4000 m ³ of Bulk Earthworks for the construction of the Attenuation pond and berms. Supply and installation of 150 m of HDPE Stormwater pipe.
Use of reasonable skill and care	Proximity to and work occurring within Private property must be carefully and methodically conducted to account for stormwater diversion and boundary wall stability.
Brief	<ul style="list-style-type: none"> a) 4 month duration. b) The works will be executed in defined phases, including site establishment, stormwater pipeline installation, attenuation pond construction, and final reinstatement, with milestone dates set for completion of each phase in accordance with the project programme. c) Daily site diaries must be submitted
Reference data	d) Zutari Stormwater Management Plan – Herrwood Drive Upgrade
Applicable national and international standards	SANS 1200 – Standard Specifications for Civil Engineering Construction SANS 1200AA: Earthworks SANS 1200L: Pipes, culverts, and manholes SANS 10252: Water Supply and Drainage Systems SANS 10400 – The South African National Building Regulations SANS 207: Design of Hydraulic Structures SANS 10160: Structural Design Actions SANS 4427-2
Access to land / buildings / sites	Access via N2 -> As detailed above -> 7 Sandringham Court
Planning and programming	The programme must show: <ul style="list-style-type: none"> - All construction activities. - Critical path - Cash flows - Risks and mitigations

TOPIC	COMMENTARY
Software application for programming	Preferably prepared in Microsoft Projects or excel
Quality management	A Quality Management System (QMS) should be implemented to ensure all works comply with project specifications and standards. This includes inspection, material approvals, method statements, and regular site inspections. Quality control measures such as compaction testing, and pipe installation (weld certifications) checks must be carried out, with proper documentation and records maintained. Non-conformances should be identified, reported, and rectified through a structured process, ensuring consistent quality throughout the project.
Format of communications	Email communication including: <ul style="list-style-type: none"> - Site instructions and photos - Variation orders - Meeting requests - Progress updates
Key personnel	Organogram to be submitted at start. Updated in case of changes.
Management meetings	Monthly progress meeting; additional meetings for delays or major issues.
Forms for contract administration	Contract shall follow GCC 2015, SANS 1921-1, and SABS 1200
Daily records	Daily Diaries of all work activities to be kept and submitted.
Professional indemnity insurances	All necessary insurance to be in place before site handover.
Payment certificates	The contractor and employer's agent representative are to conduct measurements on site which are to then be signed by both parties upon agreement. Thereafter, a payment certificate will be produced.

C3.2: PROJECT SPECIFICATION

PREAMBLE

In the event of any discrepancy between a part or parts of the Standard or Particular Specifications and the Project Specification, the Project Specification shall take precedence. In the event of a discrepancy between the Specifications, (including the Project Specifications) and the drawings and / or the Bill of Quantities, the discrepancy shall be resolved by the Employer's Agent before the execution of the work under the relevant item.

C3.2.1 GENERAL

PS.1 PROGRAMME, METHOD OF WORK, AND ACCOMMODATION OF TRAFFIC

This Clause is to be read in conjunction with the provisions and obligations as contained in **SANS 1921-1 and SANS 1921-2**.

PS.1.1 Preliminary Programme

The Contractor shall include with his tender a preliminary programme on the prescribed form (**see T2.2: Preliminary Programme**) to be completed by all Tenderers. The programme shall be in the form of a simplified bar chart with sufficient details to show clearly how the works will be performed within the time for completion as stated in the Contract Data.

Tenderers may submit tenders for an alternative Time for Completion in addition to a tender based on the specified Time for Completion. Each such alternative tender shall include a preliminary programme similar to the programme above for the execution of the works, and shall motivate his proposal clearly by stating all the financial implications of the alternative completion time.

The Contractor shall be deemed to have allowed fully in his tendered rates and prices as well as in his programme for all possible delays due to normal adverse **weather conditions** (**refer to Clause 5.12.2.2**) and special non-working days (**refer to Clause 5.1.1.1**) as specified in the in the Contract Data.

PS.1.2 Programme in Terms of Clause 5.6 of the General Conditions of Contract

It is essential that the construction programme, which shall conform in all respects to **Clause 5.6 of the General Conditions of Contract**, be furnished within the time stated in the Contract Data (**refer to Clause 5.3.1/2**).

The preliminary programme to be submitted with the tender shall be used as basis for this programme.

The Tenderer's attention is drawn to the fact that a number of factors will affect the programming of and method of carrying out the works. The more important of these are:

[Detail any factors which may affect the programming of the project]

(1) Time required for service relocations.

- (2) Time allowances to be made for the ordering of special items.
- (3) Notification required by service organisations.
- (4) Any special sequence in which work must be carried out. Must certain areas of work be finished before work commences on others?
- (5) If delays are anticipated with service relocations the contractor should be asked to allow time.
- (6) Is work required out of normal hours? (Eg. to accesses).
- (7) Vehicular access to private property is to be maintained.
- (8) Traffic restrictions.

Those known, existing services in the area of the works have been depicted on the contract drawings. It is evident, however, that the status of existing service records as far as can be ascertained might not reflect the actual situation in the field. As such, due allowance has been made in the Bill of Quantities for the proving of services where directed by the Engineer.

PS.1.3 Requirements for Accommodation of Traffic

PS.1.3.1 General

Accommodation of traffic, where applicable, shall comply with **SANS 1921-2: 2004: Construction and Management Requirements for Works Contracts, Part 2: Accommodation of Traffic on Public Roads occupied by the Contractor**. The Contractor shall obtain this specification from Standards South Africa if accommodation of traffic will be involved on any part of the construction works.

Clause 4.10.4 of SANS 1921-2: 2004 shall be replaced with the following:

“Road signs and markings shall comply with the requirements of the **“SADC Road Traffic Signs Manual - Volume 2: Roadworks Signing”**.”

PS.1.3.2 Basic Requirements

The travelling public shall have the right of way on public roads, and the Contractor shall make use of approved methods to control the movement of his equipment and vehicles so as not to constitute a hazard on the road.

The Contractor shall ensure that all road signs, barricades, delineators, flagmen and speed controls are effective, and that courtesy is extended to the public at all times.

Failure to maintain road signs, warning signs or flicker lights, etc, in a good condition shall constitute ample reason for the Employer’s Agent to suspend the work until the road signs, etc, have been repaired to his satisfaction.

The Contractor may not commence constructional activities affecting existing roads before adequate provision has been made to accommodate traffic in accordance with the requirements of this document and the South African Road Traffic Signs Manual.

The Contractor shall construct and maintain all temporary drainage works necessary for temporary deviations. The Contractor shall ensure that the existing property accesses are maintained at all times. Where necessary the Contractor shall make allowance in the rates for completing the work required to the accesses out of normal hours.

PS.1.3.3 Traffic Safety Officer

Where warranted by traffic conditions on or near the site, the Contractor shall nominate a suitable member of his staff as traffic safety officer to be responsible for the arrangement and maintenance of all the measures for the accommodation of traffic for the duration of the project. Duties of the traffic safety officer shall be in compliance with the Occupational Health and Safety Act 1993 and the Construction Regulations 2014.

PS.1.3.4 Payment

The Contractor's tendered rates for the relevant items in the Bill of Quantities shall include full compensation for all possible additional costs which may arise from this, and no claims for extra payment due to inconvenience as a result of the modus operandi will be considered.

PS.1.3.5 Pedestrian Movement

The Contractor shall make provision for accommodating all pedestrian movements in the area of the works. Allowance shall be made in the relevant rates for any barricades and signs required.

PS.1.3.6 Temporary Reinstatement

Provided always that if in the course or for the purpose of the execution of the works or any part thereof any road or way shall have been broken up, then notwithstanding anything herein contained:

- (a) if the permanent reinstatement of such road or way is to be carried out by the appropriate authority or by some person other than the contractor (or any subcontractor to him), the contractor shall at his own cost and independently of any requirement of or notice from the Engineer be responsible for the making good of any subsidence or shrinkage or other defect, imperfection or fault in the temporary reinstatement of such road or way, and for the execution of any necessary repair or amendment thereof from whatever cause the necessity arises, until the end of the period of maintenance in respect of works beneath such road or way until the authority or other person as aforesaid shall have taken possession of the site for the purpose of carrying out permanent reinstatement (whichever is the earlier), and shall indemnify and save harmless that Council against and from any damage or injury to the Council or to third parties arising out of or in consequence of any neglect or failure of the Contractor to comply with the foregoing obligations or any of them and against and from all claims, demands, proceedings, damages, costs, charges and expenses whatsoever in respect thereof or in relation thereto.
- (b) where the authority or person as aforesaid shall take possession of the site as aforesaid in sections or lengths, the responsibility of the contractor under paragraph (a) of this sub-clause shall cease in regard to any such section or length at the time possession thereof is so taken, but shall during the continuance of the said period of maintenance continue in regard to any length of which possession has not been taken and the indemnity given by the contractor under the said paragraph shall be construed and have effect accordingly.

PS.2 SERVICES

This Clause is to be read in conjunction with the provisions and obligations as contained in **SANS 1921-1 and SANS 1921-2**.

PS.2.1 Existing Services

The Tenderer's attention is drawn to the numerous existing services in the area. Although every effort has been made to depict these services accurately the positions shown must be regarded as approximate.

PS.2.2 Proving Underground Services

This clause must be read in conjunction with [Clause DB.5.1.2](#), the requirements of which shall be extended to cover all earthworks operations whether for trenching or bulk earthworks, in the vicinity of underground services.

It is stressed that all services in a particular area must be proven before commencing work in that area.

Insofar as bulk earthworks are concerned, where services are indicated on the drawings or where from site observations can reasonably be expected that such services are likely to exist where excavations are to take place, the Contractor shall without instructions from the Employer's Agent carefully excavate by hand to expose and prove their positions.

The cost of the proving trenches is to be included in the work covered by [Clause DA.8.3](#).

When a service is not located in its expected position the Contractor shall immediately report such circumstances to the Employer's Agent who will decide what further searching or other necessary action is to be carried out and shall instruct the Contractor accordingly. The cost of this additional searching shall be to the Council's cost and shall be paid for under [DB.8.19 - Proving Existing Services](#).

Should any service be damaged by the Contractor in carrying out the works and should it be found that the procedure as laid down in this clause has not been followed then all costs in connection with the repair of the service will be to the Contractor's account.

When electrical cables are not in the positions shown on drawings of eThekweni Electricity and cannot be found after proving trenches have been put down, assistance may be obtained by calling an official of the [Works Branch on Telephone No. 311-1111](#) during office hours, or by contacting [Control on Telephone No. 305-7171](#) after hours.

It should be noted that 33,000 Volt and 132,000 Volt cables may only be exposed by the eThekweni Electricity's personnel. The cables are usually protected by concrete covering slabs, and therefore if the slabs are inadvertently exposed, excavation work must stop, and the eThekweni Electricity shall be contacted immediately on the above telephone numbers.

Proving of services shall be completed at least two weeks in advance of the actual programmed date for commencing work in the area. The position of these services located must be coordinated and levelled by the Contractor, and the information given in writing to the Employer's Agent's Representative.

The requirements of this clause do not relieve the Contractor of any obligations as detailed in the Conditions of Contract or under [Clause 4.17 of SANS 1921-1](#).

PS.2.3 New Services and Relocation of Existing

This clause shall be read in conjunction with **Clause PS.1**.

New services are either to be installed by the Contractor as part of the contract or by others during the contract period. In the latter case excavation and subsequent backfilling of the trench from the top of the bedding layer shall generally be carried out by the Contractor.

Relocation of services shall generally be carried out by the relevant services organisation. Generally their work shall include the excavating and bedding the service which will include backfilling to a depth of approximately 300 mm above the service. The remainder of the backfilling shall be carried out by the Contractor.

Generally work shall only commence on the installation of new services once the bulk earthworks have been completed and roughly trimmed to level along a substantial portion of the services route. In addition no sidewalk, verge, median or island shall be surfaced or topsoiled until all work on the services has been completed.

Services affected by the contract are described as follows:

- **PS.3: Watermains;**
- **PS.4: Sewers;**
- **PS.5: Stormwater;**
- **PS.6: Electrical Cables / Lighting;**
- **PS.7: Telkom / Neotel;**
- **PS.8: CCTV;**

Further to the above, Tenderers are referred to the services drawing and are to note that several minor cables / pipes may be encountered during excavation works which may require to be relocated to some extent. It is anticipated that the two week period required under **PS.2.2** will allow sufficient time for these relocations.

PS.2.4 Accommodation of Services

Further to **Clauses PS.1 and PS.2** of this specification, Tenderers are to note that allowance must be made under this item and / or the appropriate rates, for all costs incurred as a result of complying with these clauses. It shall also cover liaison with the services organisations and accommodation of their work gangs / contractors on site.

PS.3 WATERMAINS

PS.3.1 General

Tenderer's attention is drawn to the following points regarding the watermains to be installed as part of this contract.

Consideration of existing services must be taken into account during construction.

PS.3.2 Water Main Valve Access

Due to the dangerous situation occurring when water main valves are covered over, the Contractor shall maintain access to all water main valves at all times. During asphalt layer work, after each pass by the paving machine, the valves shall be exposed and access maintained in a safe condition.

Whatever method the Contractor chooses to use for this work, the cost of raising the valves from existing level to ultimate level shall be paid only once, irrespective of the number of times the valve is uncovered. Spacer rings required for the height adjustment of valve covers shall be supplied by the Ethekeeni Water Services Directorate. Tolerances on valve cover levels shall be as specified in clause PH.6.5. Before final setting in position of valve covers the Contractor shall liaise with the Employer's Agent regarding the direction in which covers shall be placed.

PS.3.3 Restriction on Compaction Equipment

The Contractor is to note that existing watermains traverse the site of the works and special care is to be taken in close proximity to these mains and connections. The existing mains and connections shall be proved on site by the Contractor prior to any construction work commencing in the vicinity of the watermains.

Under no circumstances will heavy road-making equipment, other heavy plant or vibratory compaction equipment be permitted to operate within 800 mm vertically or horizontally of the existing mains or connections. The permissible compaction plant within this restricted area shall be the equivalent of a "Bomag 90" under static compaction, or similar approved plant. When the roadworks are far enough advanced to provide a minimum of 800 mm cover to the existing mains, the above restriction will fall away.

The Contractor is to take cognisance of the above requirements when entering rates in the Bill of Quantities and in the programming of the works. No claim for additional payment based on the inability to use plant as a result of the requirements of this clause will be accepted. The Contractor will be held liable for any costs should the watermain or electrical cables be damaged during construction of the road.

PS.4 SEWERS

Consideration of existing services must be taken into account during construction.

PS.4.1 Blockage of Foul Water Sewers

The Contractor shall be responsible for ensuring that cementitious sludge, sand and rubble from the works do not enter the foul water reticulation system. The Contractor shall be liable for any costs incurred by the Council or others as a result of blockages in the reticulation system attributed to failure to comply with the above requirement.

PS.5 STORMWATER

Contractor must prove and accommodate stormwater run-off from existing lines. Stormwater to be constructed as per engineer's design.

PS.5.1 Blockage Stormwater Sewers

The Contractor shall be responsible for ensuring that cementitious sludge, sand and rubble from the works do not enter the stormwater reticulation system. The Contractor shall be liable for any costs incurred by the Council or others as a result of blockages in the reticulation system attributed to failure to comply with the above requirement.

PS.6 ELECTRICAL PLANT

N/A

PS.6.1 General

Various types of electrical cables including high voltage, low voltage, street lighting and domestic connection cables are affected by the contract. The laying, relocation and jointing of all cables will be carried out by eThekwini Electricity's work gangs, or agents appointed by them, whilst the excavation and backfilling forms part of this contract. Close liaison will therefore be necessary with eThekwini Electricity throughout the contract.

PS.6.2 Street Lighting

The existing lighting will be removed in stages and replaced in the centre median / intersection corners. Relocation will take place during this contract and be executed by eThekwini Electricity or their agents. It is a requirement that the street lighting be operational at all times.

PS.6.3 MV / LV Cables

Certain MV / LV cables are to be replaced within the contract area. The actual cable work associated with this relocation and / or replacement of these cables will be carried out by eThekwini Electricity and it is stressed that the **two** week period referred to in Clause PS.2 is the minimum period required to enable eThekwini Electricity to be on site timeously.

PS.6.4 Relocation of Existing Services

Should it be necessary to adjust the line, level and / or position of any service not catered for in the contract to enable the construction to proceed the Contractor shall on no account effect such adjustment himself but shall notify the Engineer who will arrange for the work to be carried out at no cost to the Contractor.

PS.7 TELKOM S.A. LIMITED / NEOTEL PLANT

No work to Telkom / Neotel Plant is envisaged, but the Tenderers attention is drawn to the fact that Telkom / Neotel copper cables and fibre optic cables are existing in the contract area

PS.8 CCTV PLANT

No work to CCTV Plant is envisaged, but the Tenderers attention is drawn to the fact that CCTV cables and fibre optic cables are existing in the contract area.

PS.9 MANAGEMENT OF THE ENVIRONMENT

The Contractor shall pay special attention to the following:

PS.9.1 Natural Vegetation

The Contractor shall confine his operation to as small an area of the site as may be practical for the purpose of constructing the works.

Only those trees and shrubs directly affected by the works and such others as the Employer's Agent may direct in writing shall be cut down and stumped. The natural vegetation, grassing and other plants shall not be disturbed other than in areas where it is essential for the execution of the work or where directed by the Engineer.

PS.9.2 Fires

The Contractor shall comply with the statutory and local fire regulations. He shall also take all necessary precautions to prevent any fires. In the event of fire the Contractor shall take active steps to limit and extinguish the fire and shall accept full responsibility for damages and claims resulting from such fires which may have been caused by him or his employees.

PS.9.3 Environmental Management Plan

In addition to the above, all requirements according to the Environmental Management Plan as detailed in **C3.4: Particular Specifications**, will be adhered to.

PS.10 OCCUPATIONAL HEALTH AND SAFETY**PS.10.1 General Statement**

When considering the safety on site the Contractor's attention is drawn to the following:

1. Trenching.
2. Proximity to private property.
3. Stormwater Management.

It is a requirement of this contract that the Contractor shall provide a safe and healthy working environment and to direct all his activities in such a manner that his employees and any other persons, who may be directly affected by his activities, are not exposed to hazards to their health and safety. To this end the Contractor shall assume full responsibility to conform to all the provisions of the Occupational Health and Safety Act No 85 and Amendment Act No 181 of 1993, and the OHS Act 1993 Construction Regulations 2014 issued on 7 February 2014 by the Department of Labour.

For the purpose of this contract the Contractor is required to confirm his status as mandatory and employer in his own right for the execution of the contract by entering into an agreement with the Employer in terms of Section 37(2) of the Occupational Health and Safety Act.

PS.10.2 Health and Safety Specifications and Plans to be submitted at tender stage**PS.10.2.1 Employer's Health and Safety Specification**

The Employer's Health and Safety Specification is included in **C3.4: Particular Specifications**.

PS.10.2.2 Tenderer's Health and Safety Plan

At tender stage only a brief overview of the Tenderer's perception on the safety requirements for this contract will be adequate. This will be attached to **T2.2: Contractor's Health and Safety Plan**.

Only the successful Tenderer shall submit a separate Health and Safety Plan as required in terms of Regulation 7 of the Occupational Health and Safety Act 1993 Construction Regulations 2014, and referred to in **T2.2: Contractor's Health and Safety Plan**.

The detailed safety plan will take into consideration the **site specific risks as mentioned under PS.10.1** and must cover at least the following:

- (i) A proper risk assessment of the works, risk items, work methods and procedures in terms of Regulations 9 to 29;
- (ii) Pro-active identification of potential hazards and unsafe working conditions;
- (iii) Provision of a safe working environment and equipment;
- (iv) Statements of methods to ensure the health and safety of subcontractors, employees and visitors to the site, including safety training in hazards and risk areas (*Regulation 7*);
- (v) Monitoring health and safety on the site of works on a regular basis, and keeping of records and registers as provided for in the Construction Regulations;
- (vi) Details of the Construction Supervisor, the Construction Safety Officers and other competent persons he intends to appoint for the construction works in terms of Regulation 8 and other applicable regulations; and
- (vii) Details of methods to ensure that his Health and Safety Plan is carried out effectively in accordance with the Construction Regulations 2014.

The Contractor's Health and Safety Plan will be subject to approval by the Employer, or amendment if necessary, before commencement of construction work. The Contractor will not be allowed to commence work, or his work will be suspended if he had already commenced work, before he has obtained the Employer's written approval of his Health and Safety Plan.

Time lost due to delayed commencement or suspension of the work as a result of the Contractor's failure to obtain approval for his safety plan, shall not be used as a reason to claim for extension of time or standing time and related costs

A generic plan will not be acceptable.

PS.10.3 Cost of compliance with the OHS Act Construction Regulations

The rates and prices tendered by the Contractor shall be deemed to include all costs for conforming to the requirements of the Act, the Construction Regulations and the Employer's Health and Safety Specification as applicable to this contract. Should the Contractor fail to comply with the provisions of the Construction Regulations, he will be liable for penalties as provided in the Construction Regulations and in the Employer's Health and Safety Specification.

Items that may qualify for remuneration will be specified in the Employer's Health and Safety Specification.

PS.11 SITE SECURITY

The Contractor shall, for the duration of the contract, provide sufficient security and watchmen to adequately ensure the safety and protection of the works, the Contractor's staff, including local

labour and subcontractors, and all site plant and construction equipment required for the works.

Site Security, in conjunction with the SAPS (where necessary), shall be responsible for removal of disruptive elements, that may interrupt the progress of the contract through acts such as, but not limited to, intimidation, threats of disruption, violent disruption, or criminal and illegal activity by the local community or independent organisations or entities that may result in slowing down or partial or total stoppage of the works.

The Contractor is to take note of the prevailing security rate in the rate area, together with the allowable PSIRA rates for security when pricing this item.

The process of negotiation will not be deemed as work stoppage.

Payment for this item shall be made under Section 1, Part AB of the Bill of Quantities.

PS.12 PERFORMANCE MONITORING OF SERVICE PROVIDERS

The performance of service providers that have been selected to provide assistance in the provision of a municipal service, otherwise than in circumstances where Chapter 8 of the Municipal Systems Act applies, is required, by Section 116 of the Municipal Finance Management Act, to be monitored and reported on (see Cl.53 of the SCM Policy).

Appropriate key performance indicators (KPIs) for the contract must be set by the Municipality as a yardstick for measuring performance.

The following KPIs will be applicable to this contract:

- (a)
- (b)
- (c)

PS.14 AS-BUILT DATA

The Tenderer shall note the sum item 1.AB.16 covering the submission of as-built data.

The Contractor shall supply the Engineer with:

- (a) A list of surveyed co-ordinates of cable duct markers and Watermain valve covers constructed or modified during the course of the Contract.
- (b) A list of surveyed invert and cover levels, and co-ordinates of all catchpit and manholes constructed or modified during the course of the Contract.
- (c) Co-ordinates at 20m intervals and change of direction for the 900mm dia. And 200mm dia. HDPE pipes.

The completion certificate shall not be issued unless the above information has been forwarded to the Engineer.

C3.3: STANDARD SPECIFICATIONS

C3.3.1 The Specifications on which this contract is based are the eThekiwini Municipality's (City of Durban) Standard Engineering Specifications (hereafter referred to as the Standard Engineering Specifications). This document is obtainable separately, and Tenderers shall obtain their own copies of the applicable Sections.

Part	Description	Date of Issue	
AB	General Specifications	July	1992
B	Site Clearance	March	1990
DA	Earthworks: Bulk	January	1985
DB	Earthworks for Pipe Trenches	July	1992
EB	Graded Crushed Stone	December	1988
ED	Road Asphalt	July	1992
EF	Kerbs and Haunches	July	1992
EG	Sidewalks, Footpaths and Median Areas	July	1992
EH	Steel Guardrails & Conc. Median Barriers		
F	Protection Works	July	1992
PG	Non Pressure Pipelines and Pc Culverts	July	1992
PH	Manholes and Appurtenant Drainage Works	July	1992
S	Reinstatement	March	1993
TA	Road Signs	October	1989
TB	Road Markings	October	1989

C3.3.2 AMENDMENTS TO THE STANDARD SPECIFICATIONS

INTRODUCTION

In certain clauses the standard, standardized and particular specifications allow a choice to be specified in the project specifications between alternative materials or methods of construction and for additional requirements to be specified to suit a particular contract. Details of such alternative or additional requirements applicable to this contract are contained in this part of the project specifications. It also contains additional specifications required for this particular contract.

The number of each clause and each payment item in this part of the project specifications consists of the prefix **PS** followed by a number corresponding to the number of the relevant clause or payment item in the standard specifications. The number of a new clause or payment item, which does not form part of a clause or a payment item in the standard specifications and which is included here, is also prefixed by **PS**, but followed by a new number which follows on the last clause or item number used in the relevant section of the standard specifications.

PS AB	General Specifications
PS B	Site Clearance
PS DA	Earthworks: Bulk
PS DB	Earthworks for Pipe Trenches
PS EB	Graded Crushed Stone
PS EF	Kerbs and Haunches
PS EG	Sidewalks, Footpaths and Median Areas
PS F	Protection Works
PS PG	Non Pressure Pipelines and Pc Culverts
PS PH	Manholes and Appurtenant Drainage Works
PS S	Reinstatement
PS TA	Road Signs
PS TB	Road Markings

PS.DA.8.12 IMPORTED FILL MATERIAL

It is the Contractor's responsibility to obtain suitable fill material for the contract from a site/s of his choice. The rate tendered for this item shall be inclusive of all haulage costs and royalties. Measurement for this item shall be as a per meter (m³).

The imported fill material shall be suitable material as defined in clause AB.1.

PS.ED.9 SAW CUT ROAD EDGE

The Contractor shall cut with a diamond cutter a neat uniform line 60 mm deep along the edge of the road where directed by the Engineer. Thereafter the remaining depth of road may be cut by pneumatic hand tool.

The unit of measurement shall be the metre (m) and the rate shall cover the overall depth of cut and the removal of the asphalt include haulage and spoil at tip.

PS.ED.8.6.1 METHOD OF WORK

The areas to be planed and the depths of asphalt to be removed shall be indicated either on

the drawings or by the Engineer on site. Where it is necessary to maintain traffic over the planed areas the planning shall be programmed to take place immediately prior to the asphaltting operation.

The milled material shall be disposed of at an approved off site tip.

After planning, the area shall be swept of all loose material and a tack coat applied at a rate of 0,3 l/m² following which the replacement asphalt shall be laid. On no account shall traffic be permitted to run on the planed surface.

In areas where the existing road base is disturbed by the planning operation, the surface of the base shall be recompacted with static compactive equipment. These areas shall then be primed with MC 30 or MSP 1 applied at a rate of 0,6 l/m². Only after the curing period shall the asphalt be laid.

In certain instances, the Engineer may direct that the disturbed road base be removed and replaced with graded crushed stone or cement treated graded crushed stone.

PS.ED.8.6.2 Measurement and Payment

(1) Planning

The unit of measurement shall be the square metre (m²). Separate items have been included in the Schedule of Quantities for the various planed depths anticipated. The rates shall include the hire of the planer, loading and transporting the planed material to tip and sweeping of the surface. In addition, allowance shall be made for working around manhole and valve covers.

(2) Recompacting and Priming of Road Base

The unit of measurement shall be the square metre (m²) and shall be measured extra over to the above item. The rate shall cover the plant and labour required to complete the operation as specified and shall include the supply and application of the prime coat.

(3) Removal and Reinstatement of Road Base

Removal of road base shall be measured under abandoned roadways. Payment for the reinstatement of the road base shall be made under items 3.EB.1 or 3. EC.1.

PS.F.8.9 EROSION PROTECTION – VEGETATION

Engineer as directed by the specialist to advise on specific type of vegetation species to be planted in accordance with the relevant authorities. The rate to include 100mm thick Topsoil, with specified Compost and Fertilizer ratio (the ratio to be defined by the specialist).

The unit of measurement shall be the per meter squared (m²).

.PS.PG.8.2 HDPE PIPE INSTALLATION

Allow for the supply, welding and installation of HDPE pipe as specified by engineer. Measurement for this item shall be as a per meter (m).

The pipe will be installed from the materials supplied from specified supplier, as such the specified supplier shall be used for the welding and installation of the HDPE structured wall pipe. The contractor shall be reimbursed from the PC sum Item based on the Quote provided by the specified service provider as well as labour, plant and materials required for the installation. Each weld must be certified and provided to the engineer.

PS.PG.8.14 HDPE 45° DEGREE BENDS

Supply, fabricate 900mm 45-degree bends, lay and handle including welding in position all fittings to secure the 900dia. HDPE pipe in position. And HDPE stub and flange to 900mm diameter HDPE pipe.

The unit of measurement shall be Number (no.)

C3.4: PARTICULAR SPECIFICATIONS

In addition to the Standardized and Project Specifications the following Particular Specifications / Policies shall apply to this contract:

C3.4.1 Part AH - OHS Act 1993 Safety Specification
(26 Pages)

C3.4.2 Standard Environmental Management Plan for Civil Engineering Construction Works
(24 Pages)

C3.5: CONTRACT AND STANDARD DRAWINGS**C3.5.1 CONTRACT DRAWINGS / DETAILS**

To be provided

C3.5.2 STANDARD DRAWINGS

The Standard Drawings to which these Standard Engineering Specifications refer are listed below.

Dwg No	Description	Date of Issue	
38570	Ring Manholes	February	1990
38571	Brick Manhole Details	February	1990
38572	Stormwater Inlet Details	February	1990
38573	Stormwater Inlet Special Details	February	1990
38575	Sub-Soil Drain, Pipe Bedding and Pipe Protection Details	February	1990
38577	Kerbing Details	February	1990

C3.6: ANNEXURES

C3.6.1 “There are no Annexures”

