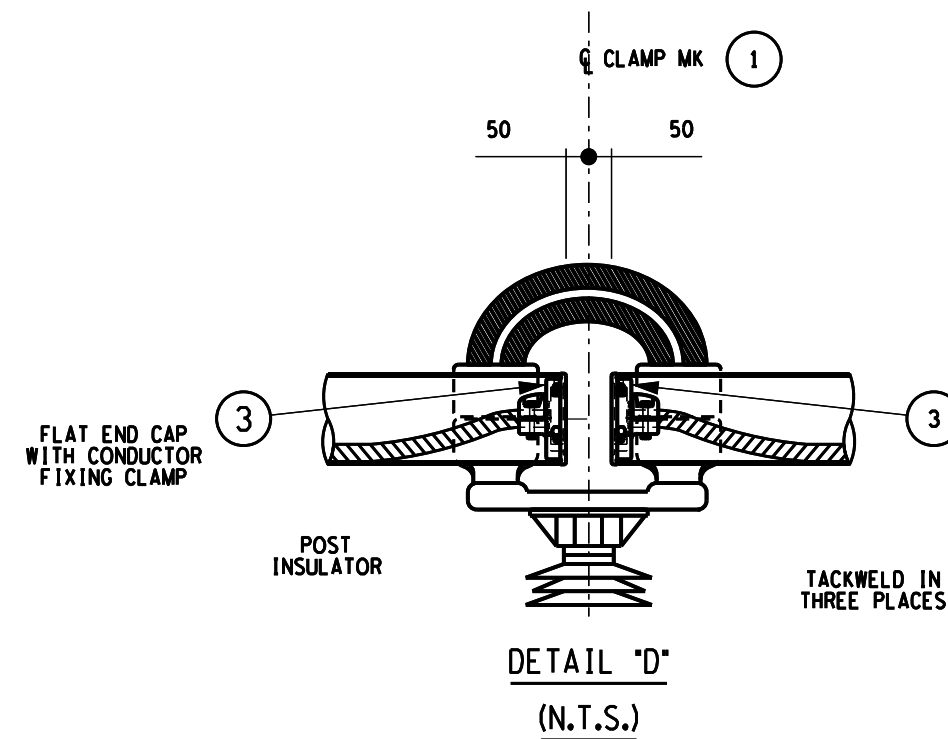
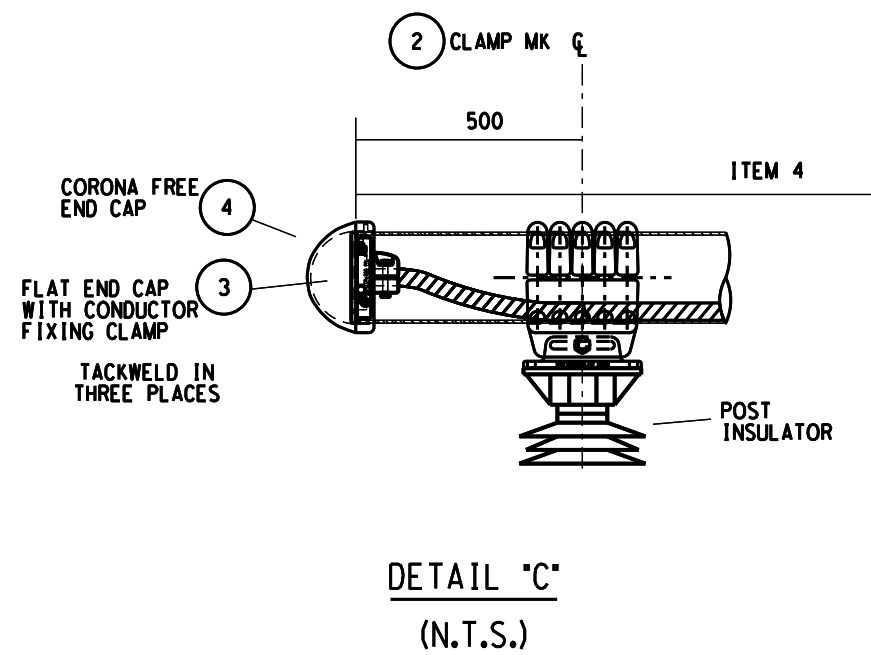
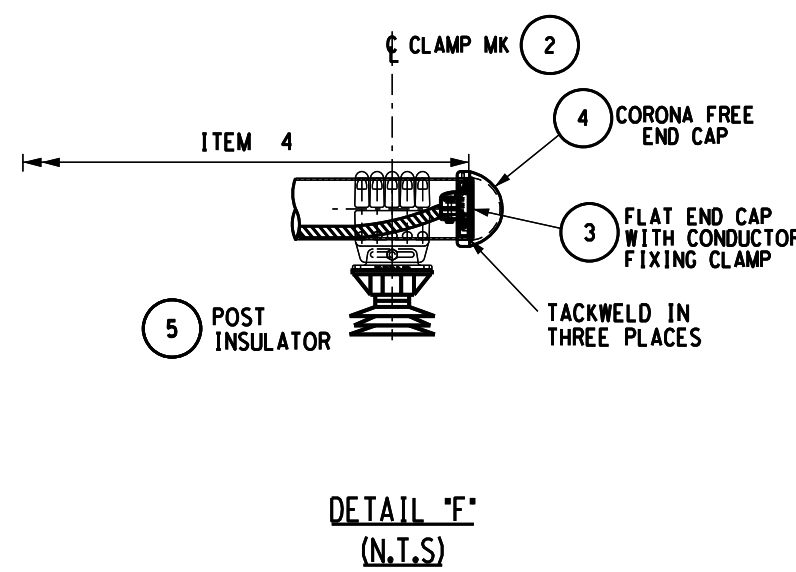


SCALE 1:2

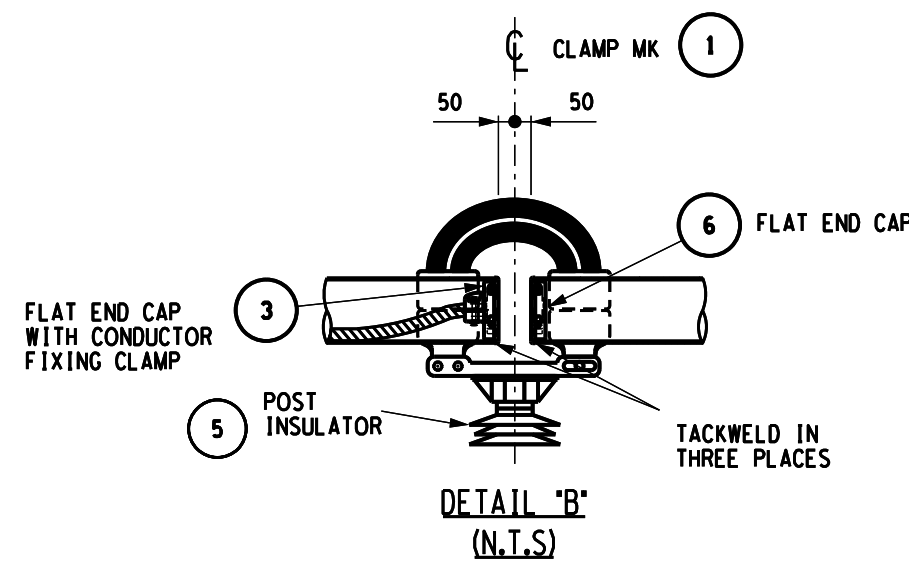
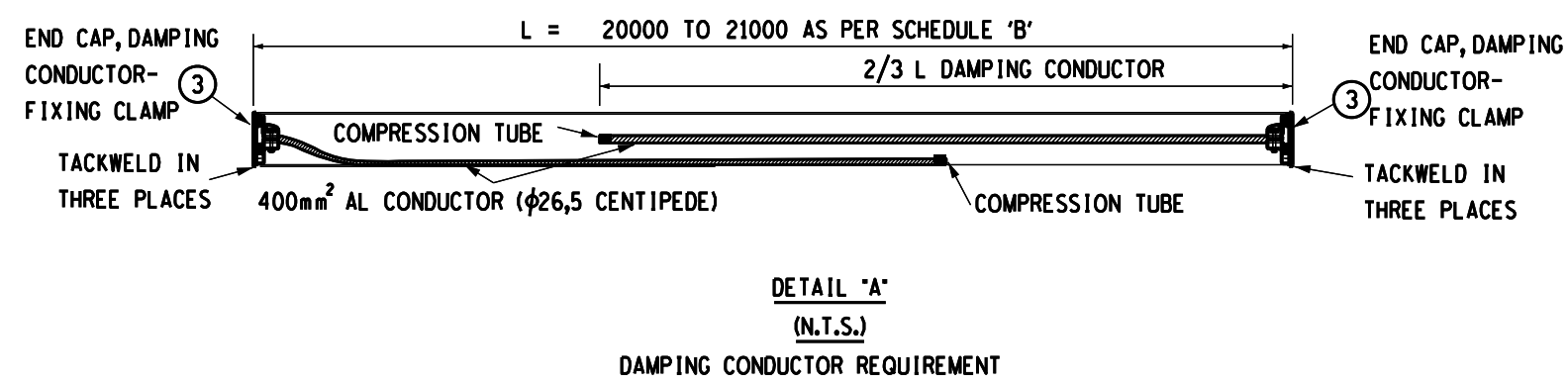
DAMPING CONDUCTOR SCHEDULE (STAGE 1) SEE DETAIL "A"	
DESCRIPTION	QUANTITY
CENTIPEDE (400mm)	328m

FOUNDATION		A
		4358
EQUIPMENT		ISOLATOR
EQUIPMENT RATING	AMPS	3150
	kA	50
MAKER		HAPAM
OUTLINE DRG No 0.54/		9876
ESKOM NATIONAL CONTRACT		
STEM/PAD		8HHP
STEELWORK DRG No 0.54/	SUPPORT	302
	CAP	306,10110



SCHEDULE 'A' OF BUSBAR CLAMPS, POST INSULATORS & BRACKETS			
MK	DESCRIPTION	ITEM	QUANTITY
1	250 - 250 TUBE EXPANSION CLAMP FIXED/SLIDE 225mm PCD	EEC-PI-FS-R	15
2	250 BUS SUPPORT SLIDING CLAMP 225mm PCD	ECC-PI-S-K	6
3	TUBULAR BUSBAR FLAT END CAP WITH CONDUCTOR FIXING CLAMP	EEC-DC-H	R 8 W 8 B 8
4	CORONA FREE END CAP.	EEC-CF-G	R 6 W 6 B 6
5	275kV POST INSULATOR (10kN)	TBC	21
6	FLAT END CAP (PLAIN)	EEC-PL-G	4
7	TUBULAR LABEL SUPPORT FRAME BRACKET	0.54/5601	4
8	TUBULAR LABEL SUPPORT FRAME	0.54/1790	4
9	CLAMP	ETP-TE-IL2-H	12
10	FERRULE FOR DUMPING CONDUCTOR	ECES-A	24

SCHEDULE 'B' OF $\phi 250 \times 6$ WT BUSBAR TUBES			
ITEM No	LENGTH (mm)	REMARKS	QUANTITY
1	3000	-	12
2	20000	-	3
3	21000	-	3
4	20500	-	6



**DETAIL DESIGN
NOT FOR CONSTRUCTION**
ORIGINAL DWG #: N/A
CONCEPT DWG #: N/A

0 FIRST ISSUE		E4 KEY PLAN	
REV	REVISION DESCRIPTION	DRAWN	CHKD
DATE 30/06/2023		AUTH DATE	
CHECKED BY		WAT15P02-SE-	
DATE 17/05/2023		REFERENCE DRAWINGS	
DRAWN BY		Eskom Holdings SOC Ltd	
DATE 15/05/2023		Reg No 2002/015527/30	
SCALE 1:500		WAT16P02-SE-E9	
		SHEET NUMBER	REVISION
		0	0

SIZE GROOTTE A1L