

PLAN  
SCALE 1:50

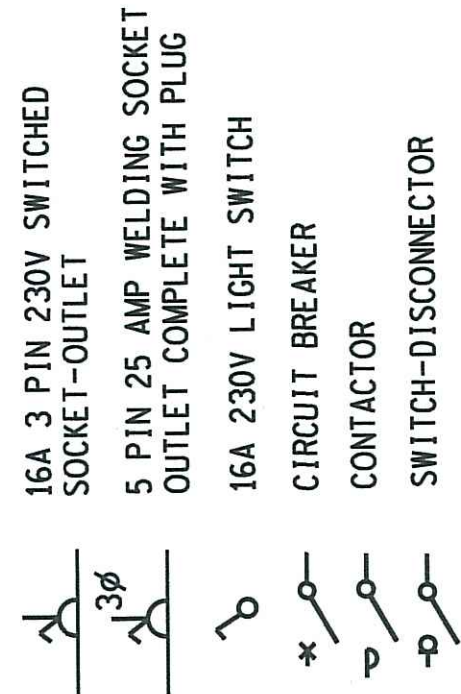
NOTES

1. ELECTRICAL INSTALLATION SHALL BE IN ACCORDANCE WITH:
  - 1.1. SANS 10142
  - 1.2. MODEL PREAMBLES FOR TRADES, SECTION "S" ELECTRICAL WORK
  - 1.3. TECHNICAL SPECIFICATION
2. ALL WIRING SHALL BE CARRIED OUT USING PVC CABLES IN PVC CONDUITS TYPE OF INSTALLATION-FLUSH
3. COLOUR OF LIGHT SWITCHES & SOCKET-OUTLET COVERS-WHITE
4. MOUNTING HEIGHTS A.F.F.L.
  - 4.1. LIGHT SWITCHES-1350
  - 4.2. SOCKET-OUTLETS-1350
  - 4.3. DB -2000 TO TOP OF BOARD
  - 4.4. LUMINAIRES SHALL BE INSTALLED AS SHOWN ON PLAN
5. EARTH & NEUTRAL TERMINALS SHALL BE OF THE PRESSURE PLATE TYPE WITH CAPTIVE SCREWS
6. POWER/CONTROL CABLES IN ROOF SPACE SHALL BE INSTALLED ON CABLE RACKING

SCHEDULE OF LUMINAIRES WITH LAMPS

PLAN REF	DESCRIPTION	SUPPLIERS	CAT No
A	FLUORESCENT LUMINAIRE INDUSTRIAL SHALLOW CHANNEL AND SHALLOW WINGS FOR MOUNTING ON CEILING WITH 2x65W 230V AC LAMP	VOLTEX LIGHTING	RANGELITE RI-265SS
C	BULKHEAD LED LUMINAIRE COLOUR INDEX 4000K BODY-HIGH PRESSURE DIE CAST ALUMINIUM CONTROL GEAR CONSTANT CURRENT LED DRIVER	NORLAND LIGHTING	NML 16LED-AREA

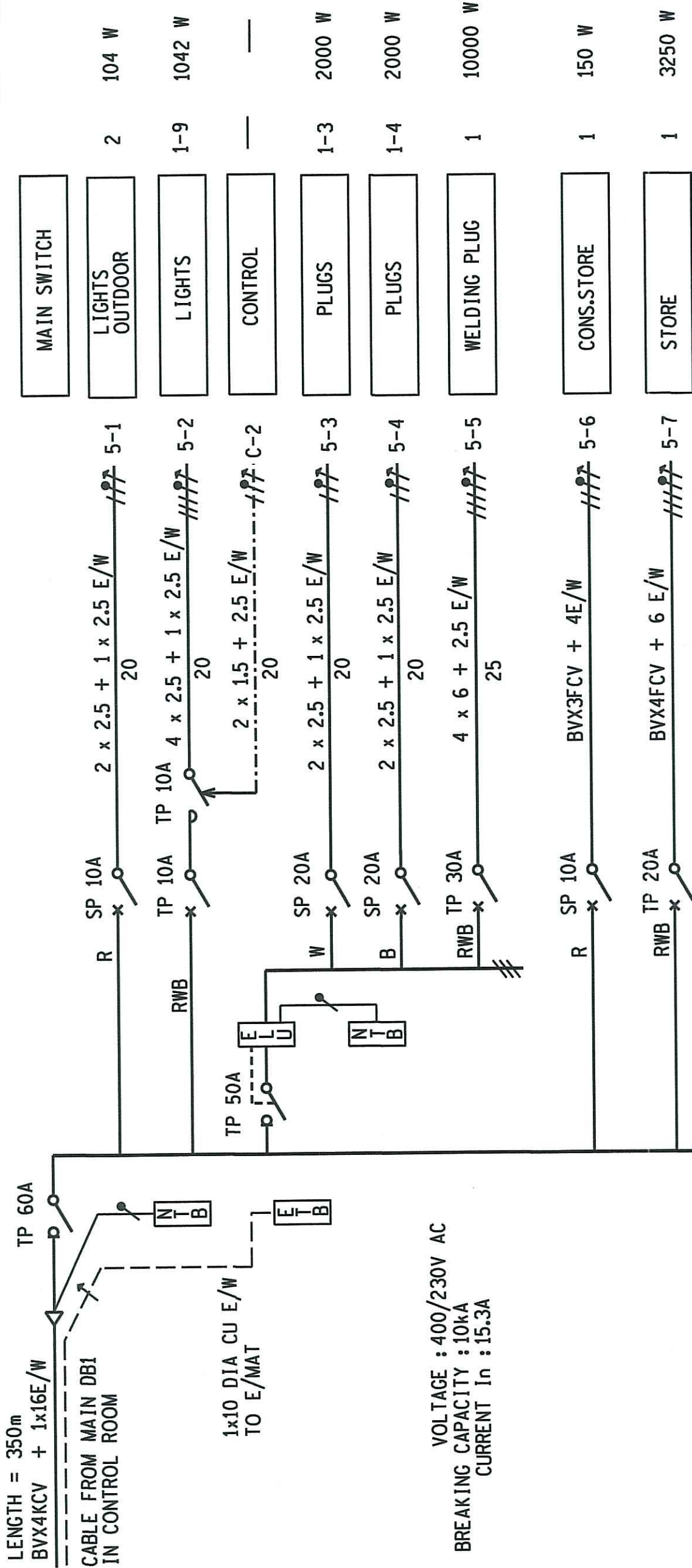
ELECTRICAL LEGEND:  
(IN ACCORDANCE WITH NRS002)



LABEL : DB 5 400/230V AC  
SCHEMATIC DIAGRAM FOR DISTRIBUTION BOARD TO SANS 11180  
PART 1 : ARCHITRAVE TYPE, FOR FLUSH MOUNTING  
ON INDOOR WALL COLOUR- GREY G29 TO SANS11091 WITH DOOR

ELU'S	PHASE	MCB'S	CONDUCTOR SIZE mm <sup>2</sup>	CONDUIT SIZE mm	CIRC No	LABEL	POINT No	LOAD
-------	-------	-------	--------------------------------	-----------------	---------	-------	----------	------

CONN = 18546W  
EST = 11259W



VOL TAGE : 400/230V AC  
BREAKING CAPACITY : 10KA  
CURRENT in : 153A

REV	REVISION DESCRIPTION	BY	CHKD	AUTH	DATE	REFERENCE DRAWINGS
APPROVED BY						
DATE	18/19/2017					
CHECKED BY						
DATE	18/19/2017					
DRAWN BY						
DATE	18/19/2017					
SCALE	-----					
Eskom Holdings SOC Ltd Reg No 2002/015527/30						
WESKUSFLEUR WORKSHOP ELECTRICAL INSTALLATION AND SCHEMATIC DIAGRAM						
WKoe11P01-SE-D61						
SHEET NUMBER						REVISION
0						0