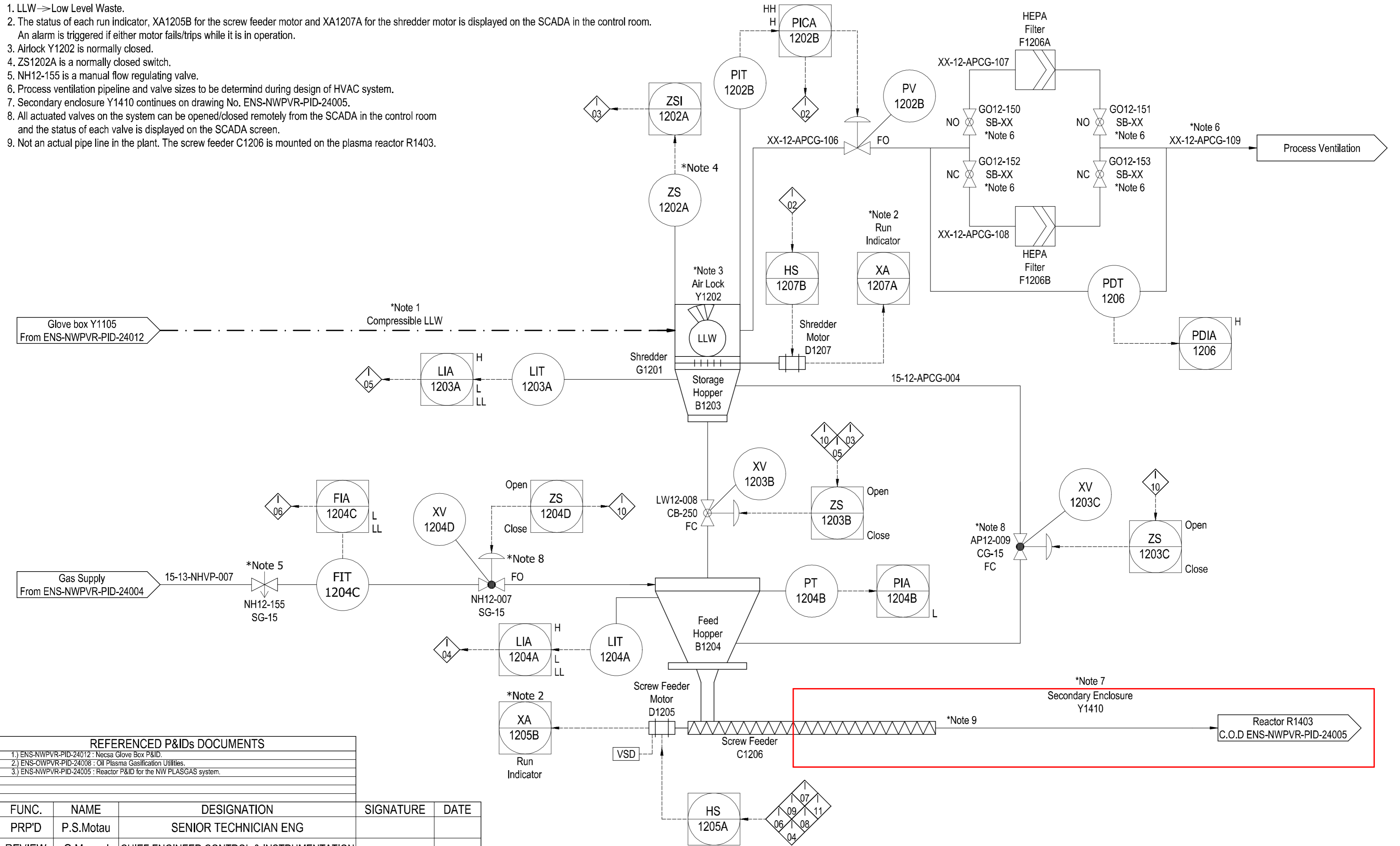


NOTES:

1. LLW → Low Level Waste.
2. The status of each run indicator, XA1205B for the screw feeder motor and XA1207A for the shredder motor is displayed on the SCADA in the control room. An alarm is triggered if either motor fails/trips while it is in operation.
3. Airlock Y1202 is normally closed.
4. ZS1202A is a normally closed switch.
5. NH12-155 is a manual flow regulating valve.
6. Process ventilation pipeline and valve sizes to be determined during design of HVAC system.
7. Secondary enclosure Y1410 continues on drawing No. ENS-NWPVR-PID-24005.
8. All actuated valves on the system can be opened/closed remotely from the SCADA in the control room and the status of each valve is displayed on the SCADA screen.
9. Not an actual pipe line in the plant. The screw feeder C1206 is mounted on the plasma reactor R1403.



REFERENCED P&IDs DOCUMENTS

1.) ENS-NWPVR-PID-24012 : Necsa Glove Box P&ID.
2.) ENS-NWPVR-PID-24008 : Oit Plasma Gasification Utilities.
3.) ENS-NWPVR-PID-24005 : Reactor P&ID for the NW PLASGAS system.

FUNC.	NAME	DESIGNATION	SIGNATURE	DATE
PRP'D	P.S.Motau	SENIOR TECHNICIAN ENG		
REVIEW	G.Manuel	CHIEF ENGINEER CONTROL & INSTRUMENTATION		
REVIEW	S.Mngoma	CHIEF MECHANICAL ENGINEER		
REVIEW	W.vd Berg	CHIEF ELECTRICAL ENGINEER		
REVIEW	M.Correia	SENIOR PROCESS ENGINEER		
APPR'D	K.Moodley	CHIEF PROCESS ENGINEER		

REV	DESCRIPTION	PRP'D	DATE
0.1	Info Carried Over From AC-NWPVR-PID-21005	PSM	15/03/2024
0.2	Changes As Per ENS-NWPVR-ECP-24008	PSM	15/03/2024
0.3	Air Lock Negative Pressure (ECP11)	B.M.K	20/03/2024
0.4	Changes As Per ENS-NWPVR-ECP-24006	L.D	14/08/2024
1.0	First Issue	P.S.M	14/01/2025

necea We're in your world

PROJECT	NW PLASGAS
TITLE	P&ID DIAGRAM
DRG.No.	ENS-NWPVR-PID-24006
SHEET	1 OF 1
TEAMCENTRE No.	-

SCALE - NTS
UNITS - N/A

DESTROY ALL PREVIOUS PRINTS
CADDIE 12
1.0
REVISION

ENS-NWPVR-PID-24006