

3 VEHICLE CAMP: BAYS X 10

OFFICIAL LIGHT VEHICLE CAMP: BAYS X 25

LOADING ZONE



GENERAL NOTES

This drawing is issued for Electrical purposes only, and should be read in conjunction with the Electrical Specification. Setting out of Electrical and Electronic accessories are to be as indicated on Architects details.

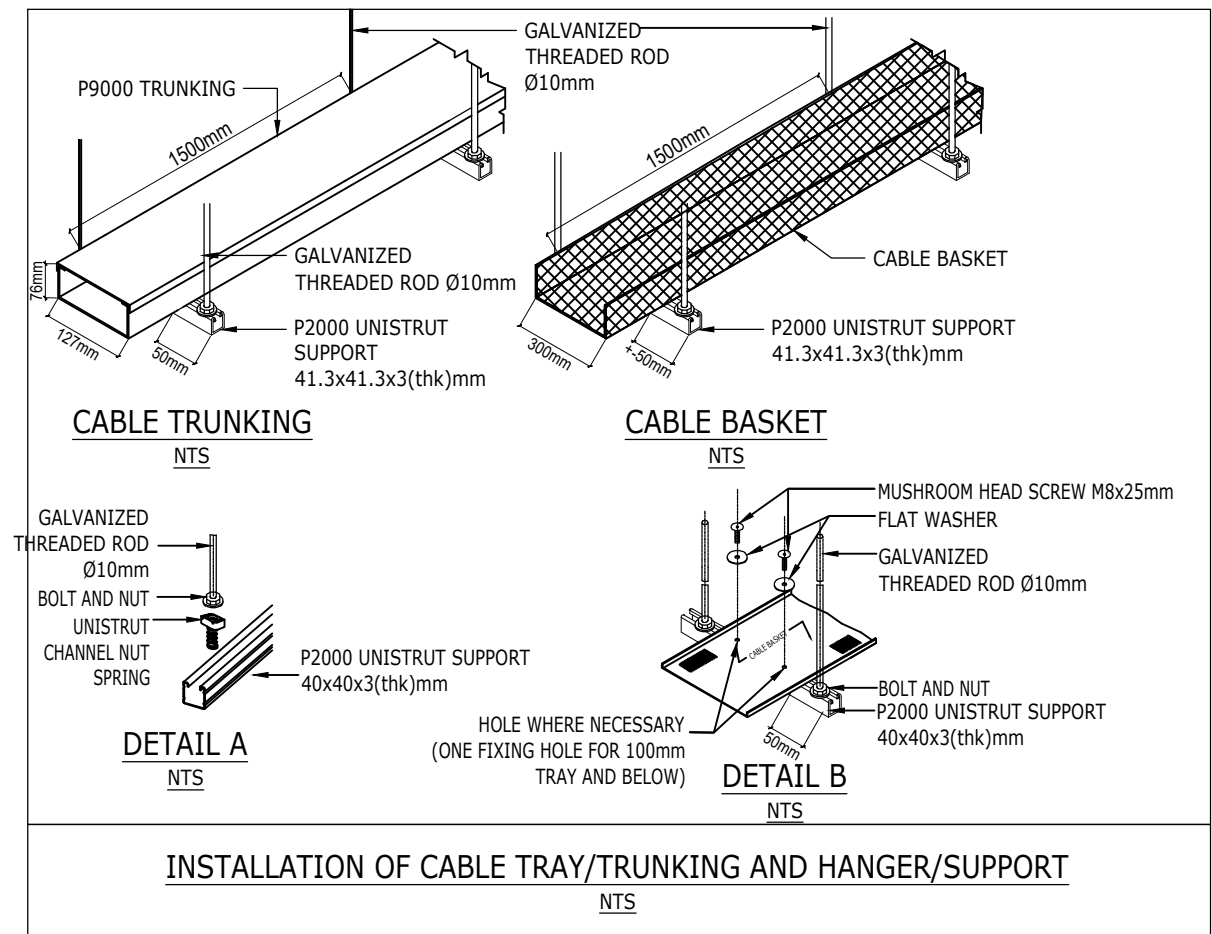
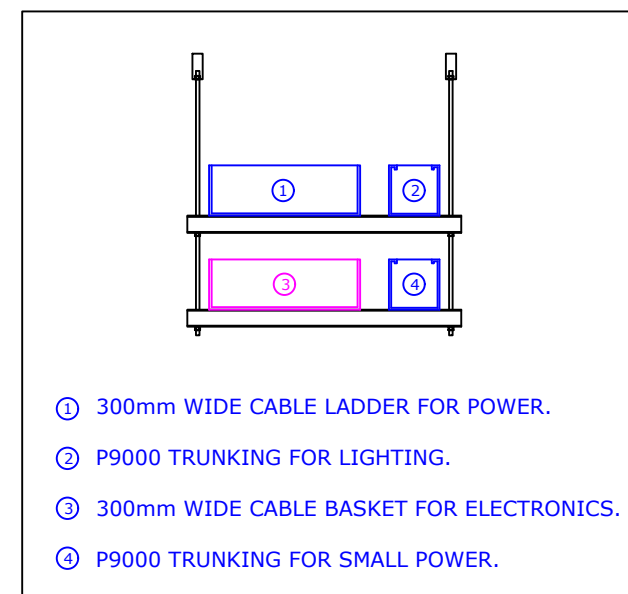
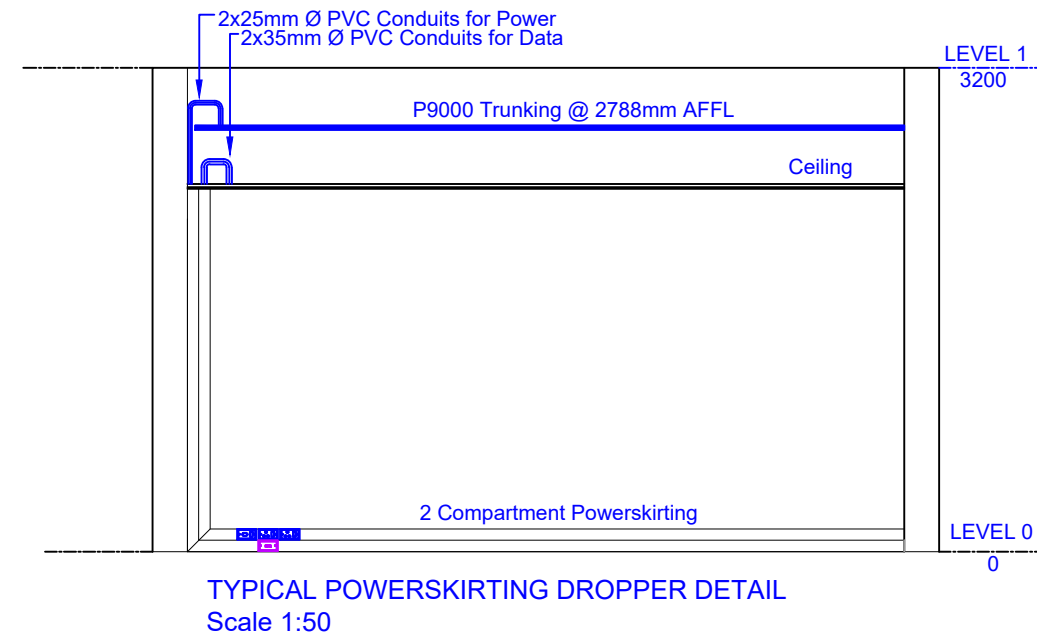
Refer to Architects and Structural Drawings for all building dimensions, latest building revisions and services.

Do not scale this drawing.

All work to comply with relevant Standards, Codes of Practice, Specification and Regulations.

Notwithstanding anything to the contrary, all rights reserved. No part of this drawing may be reproduced in any material form (including photo-copying or storage in any medium or by electronic means and whether or not transiently or incidentally to some other use of this drawing). In addition, this drawing may not be used for any purpose or reason other than for which it was originally issued, without written permission of the author.

DRAWING NOTES



NOTES: (1) - Contractor to ensure min distance between draw boxes 20 metres notwithstanding anything to contrary.				(2) - Draw boxes required after every second 90 deg. bend or 180 deg. total of slab bends.				(3) - All un-wired conduits to be provided with draw wires. These will be withdrawn and checked at random.				(4) - Cast in conduits to be spaced 35mm, minimum.			
<div><div>1. UNWIRING CONDUIT BOX</div><div>2. UNWIRING CONDUIT BOX AT 500WPL</div><div>3. UNWIRING CONDUIT BOX AT 1000WPL</div><div>4. UNWIRING CONDUIT BOX AT 1500WPL</div><div>5. UNWIRING CONDUIT BOX AT 2000WPL</div><div>6. UNWIRING CONDUIT BOX AT 2500WPL</div><div>7. UNWIRING CONDUIT BOX AT 3000WPL</div><div>8. UNWIRING CONDUIT BOX AT 3500WPL</div><div>9. UNWIRING CONDUIT BOX AT 4000WPL</div><div>10. UNWIRING CONDUIT BOX AT 4500WPL</div><div>11. UNWIRING CONDUIT BOX AT 5000WPL</div><div>12. UNWIRING CONDUIT BOX AT 5500WPL</div><div>13. UNWIRING CONDUIT BOX AT 6000WPL</div><div>14. UNWIRING CONDUIT BOX AT 6500WPL</div><div>15. UNWIRING CONDUIT BOX AT 7000WPL</div><div>16. UNWIRING CONDUIT BOX AT 7500WPL</div><div>17. UNWIRING CONDUIT BOX AT 8000WPL</div><div>18. UNWIRING CONDUIT BOX AT 8500WPL</div><div>19. UNWIRING CONDUIT BOX AT 9000WPL</div><div>20. UNWIRING CONDUIT BOX AT 9500WPL</div><div>21. UNWIRING CONDUIT BOX AT 10000WPL</div><div>22. UNWIRING CONDUIT BOX AT 10500WPL</div><div>23. UNWIRING CONDUIT BOX AT 11000WPL</div><div>24. UNWIRING CONDUIT BOX AT 11500WPL</div><div>25. UNWIRING CONDUIT BOX AT 12000WPL</div><div>26. UNWIRING CONDUIT BOX AT 12500WPL</div><div>27. UNWIRING CONDUIT BOX AT 13000WPL</div><div>28. UNWIRING CONDUIT BOX AT 13500WPL</div><div>29. UNWIRING CONDUIT BOX AT 14000WPL</div><div>30. UNWIRING CONDUIT BOX AT 14500WPL</div><div>31. UNWIRING CONDUIT BOX AT 15000WPL</div><div>32. UNWIRING CONDUIT BOX AT 15500WPL</div><div>33. UNWIRING CONDUIT BOX AT 16000WPL</div><div>34. UNWIRING CONDUIT BOX AT 16500WPL</div><div>35. UNWIRING CONDUIT BOX AT 17000WPL</div><div>36. UNWIRING CONDUIT BOX AT 17500WPL</div><div>37. UNWIRING CONDUIT BOX AT 18000WPL</div><div>38. UNWIRING CONDUIT BOX AT 18500WPL</div><div>39. UNWIRING CONDUIT BOX AT 19000WPL</div><div>40. UNWIRING CONDUIT BOX AT 19500WPL</div><div>41. UNWIRING CONDUIT BOX AT 20000WPL</div><div>42. UNWIRING CONDUIT BOX AT 20500WPL</div><div>43. UNWIRING CONDUIT BOX AT 21000WPL</div><div>44. UNWIRING CONDUIT BOX AT 21500WPL</div><div>45. UNWIRING CONDUIT BOX AT 22000WPL</div><div>46. UNWIRING CONDUIT BOX AT 22500WPL</div><div>47. UNWIRING CONDUIT BOX AT 23000WPL</div><div>48. UNWIRING CONDUIT BOX AT 23500WPL</div><div>49. UNWIRING CONDUIT BOX AT 24000WPL</div><div>50. UNWIRING CONDUIT BOX AT 24500WPL</div><div>51. UNWIRING CONDUIT BOX AT 25000WPL</div><div>52. UNWIRING CONDUIT BOX AT 25500WPL</div><div>53. UNWIRING CONDUIT BOX AT 26000WPL</div><div>54. UNWIRING CONDUIT BOX AT 26500WPL</div><div>55. UNWIRING CONDUIT BOX AT 27000WPL</div><div>56. UNWIRING CONDUIT BOX AT 27500WPL</div><div>57. UNWIRING CONDUIT BOX AT 28000WPL</div><div>58. UNWIRING CONDUIT BOX AT 28500WPL</div><div>59. UNWIRING CONDUIT BOX AT 29000WPL</div><div>60. UNWIRING CONDUIT BOX AT 29500WPL</div><div>61. UNWIRING CONDUIT BOX AT 30000WPL</div><div>62. UNWIRING CONDUIT BOX AT 30500WPL</div><div>63. UNWIRING CONDUIT BOX AT 31000WPL</div><div>64. UNWIRING CONDUIT BOX AT 31500WPL</div><div>65. UNWIRING CONDUIT BOX AT 32000WPL</div><div>66. UNWIRING CONDUIT BOX AT 32500WPL</div><div>67. UNWIRING CONDUIT BOX AT 33000WPL</div><div>68. UNWIRING CONDUIT BOX AT 33500WPL</div><div>69. UNWIRING CONDUIT BOX AT 34000WPL</div><div>70. UNWIRING CONDUIT BOX AT 34500WPL</div><div>71. UNWIRING CONDUIT BOX AT 35000WPL</div><div>72. UNWIRING CONDUIT BOX AT 35500WPL</div><div>73. UNWIRING CONDUIT BOX AT 36000WPL</div><div>74. UNWIRING CONDUIT BOX AT 36500WPL</div><div>75. UNWIRING CONDUIT BOX AT 37000WPL</div><div>76. UNWIRING CONDUIT BOX AT 37500WPL</div><div>77. UNWIRING CONDUIT BOX AT 38000WPL</div><div>78. UNWIRING CONDUIT BOX AT 38500WPL</div><div>79. UNWIRING CONDUIT BOX AT 39000WPL</div><div>80. UNWIRING CONDUIT BOX AT 39500WPL</div><div>81. UNWIRING CONDUIT BOX AT 40000WPL</div><div>82. UNWIRING CONDUIT BOX AT 40500WPL</div><div>83. UNWIRING CONDUIT BOX AT 41000WPL</div><div>84. UNWIRING CONDUIT BOX AT 41500WPL</div><div>85. UNWIRING CONDUIT BOX AT 42000WPL</div><div>86. UNWIRING CONDUIT BOX AT 42500WPL</div><div>87. UNWIRING CONDUIT BOX AT 43000WPL</div><div>88. UNWIRING CONDUIT BOX AT 43500WPL</div><div>89. UNWIRING CONDUIT BOX AT 44000WPL</div><div>90. UNWIRING CONDUIT BOX AT 44500WPL</div><div>91. UNWIRING CONDUIT BOX AT 45000WPL</div><div>92. UNWIRING CONDUIT BOX AT 45500WPL</div><div>93. UNWIRING CONDUIT BOX AT 46000WPL</div><div>94. UNWIRING CONDUIT BOX AT 46500WPL</div><div>95. UNWIRING CONDUIT BOX AT 47000WPL</div><div>96. UNWIRING CONDUIT BOX AT 47500WPL</div><div>97. UNWIRING CONDUIT BOX AT 48000WPL</div><div>98. UNWIRING CONDUIT BOX AT 48500WPL</div><div>99. UNWIRING CONDUIT BOX AT 49000WPL</div><div>100. UNWIRING CONDUIT BOX AT 49500WPL</div><div>101. UNWIRING CONDUIT BOX AT 50000WPL</div><div>102. UNWIRING CONDUIT BOX AT 50500WPL</div><div>103. UNWIRING CONDUIT BOX AT 51000WPL</div><div>104. UNWIRING CONDUIT BOX AT 51500WPL</div><div>105. UNWIRING CONDUIT BOX AT 52000WPL</div><div>106. UNWIRING CONDUIT BOX AT 52500WPL</div><div>107. UNWIRING CONDUIT BOX AT 53000WPL</div><div>108. UNWIRING CONDUIT BOX AT 53500WPL</div><div>109. UNWIRING CONDUIT BOX AT 54000WPL</div><div>110. UNWIRING CONDUIT BOX AT 54500WPL</div><div>111. UNWIRING CONDUIT BOX AT 55000WPL</div><div>112. UNWIRING CONDUIT BOX AT 55500WPL</div><div>113. UNWIRING CONDUIT BOX AT 56000WPL</div><div>114. UNWIRING CONDUIT BOX AT 56500WPL</div><div>115. UNWIRING CONDUIT BOX AT 57000WPL</div><div>116. UNWIRING CONDUIT BOX AT 57500WPL</div><div>117. UNWIRING CONDUIT BOX AT 58000WPL</div><div>118. UNWIRING CONDUIT BOX AT 58500WPL</div><div>119. UNWIRING CONDUIT BOX AT 59000WPL</div><div>120. UNWIRING CONDUIT BOX AT 59500WPL</div><div>121. UNWIRING CONDUIT BOX AT 60000WPL</div><div>122. UNWIRING CONDUIT BOX AT 60500WPL</div><div>123. UNWIRING CONDUIT BOX AT 61000WPL</div><div>124. UNWIRING CONDUIT BOX AT 61500WPL</div><div>125. UNWIRING CONDUIT BOX AT 62000WPL</div><div>126. UNWIRING CONDUIT BOX AT 62500WPL</div><div>127. UNWIRING CONDUIT BOX AT 63000WPL</div><div>128. UNWIRING CONDUIT BOX AT 63500WPL</div><div>129. UNWIRING CONDUIT BOX AT 64000WPL</div><div>130. UNWIRING CONDUIT BOX AT 64500WPL</div><div>131. UNWIRING CONDUIT BOX AT 65000WPL</div><div>132. UNWIRING CONDUIT BOX AT 65500WPL</div><div>133. UNWIRING CONDUIT BOX AT 66000WPL</div><div>134. UNWIRING CONDUIT BOX AT 66500WPL</div><div>135. UNWIRING CONDUIT BOX AT 67000WPL</div><div>136. UNWIRING CONDUIT BOX AT 67500WPL</div><div>137. UNWIRING CONDUIT BOX AT 68000WPL</div><div>138. UNWIRING CONDUIT BOX AT 68500WPL</div><div>139. UNWIRING CONDUIT BOX AT 69000WPL</div><div>140. UNWIRING CONDUIT BOX AT 69500WPL</div><div>141. UNWIRING CONDUIT BOX AT 70000WPL</div><div>142. UNWIRING CONDUIT BOX AT 70500WPL</div><div>143. UNWIRING CONDUIT BOX AT 71000WPL</div><div>144. UNWIRING CONDUIT BOX AT 71500WPL</div><div>145. UNWIRING CONDUIT BOX AT 72000WPL</div><div>146. UNWIRING CONDUIT BOX AT 72500WPL</div><div>147. UNWIRING CONDUIT BOX AT 73000WPL</div><div>148. UNWIRING CONDUIT BOX AT 73500WPL</div><div>149. UNWIRING CONDUIT BOX AT 74000WPL</div><div>150. UNWIRING CONDUIT BOX AT 74500WPL</div><div>151. UNWIRING CONDUIT BOX AT 75000WPL</div><div>152. UNWIRING CONDUIT BOX AT 75500WPL</div><div>153. UNWIRING CONDUIT BOX AT 76000WPL</div><div>154. UNWIRING CONDUIT BOX AT 76500WPL</div><div>155. UNWIRING CONDUIT BOX AT 77000WPL</div><div>156. UNWIRING CONDUIT BOX AT 77500WPL</div><div>157. UNWIRING CONDUIT BOX AT 78000WPL</div><div>158. UNWIRING CONDUIT BOX AT 78500WPL</div><div>159. UNWIRING CONDUIT BOX AT 79000WPL</div><div>160. UNWIRING CONDUIT BOX AT 79500WPL</div><div>161. UNWIRING CONDUIT BOX AT 80000WPL</div><div>162. UNWIRING CONDUIT BOX AT 80500WPL</div><div>163. UNWIRING CONDUIT BOX AT 81000WPL</div><div>164. UNWIRING CONDUIT BOX AT 81500WPL</div><div>165. UNWIRING CONDUIT BOX AT 82000WPL</div><div>166. UNWIRING CONDUIT BOX AT 82500WPL</div><div>167. UNWIRING CONDUIT BOX AT 83000WPL</div><div>168. UNWIRING CONDUIT BOX AT 83500WPL</div><div>169. UNWIRING CONDUIT BOX AT 84000WPL</div><div>170. UNWIRING CONDUIT BOX AT 84500WPL</div><div>171. UNWIRING CONDUIT BOX AT 85000WPL</div><div>172. UNWIRING CONDUIT BOX AT 85500WPL</div><div>173. UNWIRING CONDUIT BOX AT 86000WPL</div><div>174. UNWIRING CONDUIT BOX AT 86500WPL</div><div>175. UNWIRING CONDUIT BOX AT 87000WPL</div><div>176. UNWIRING CONDUIT BOX AT 87500WPL</div><div>177. UNWIRING CONDUIT BOX AT 88000WPL</div><div>178. UNWIRING CONDUIT BOX AT 88500WPL</div><div>179. UNWIRING CONDUIT BOX AT 89000WPL</div><div>180. UNWIRING CONDUIT BOX AT 89500WPL</div><div>181. UNWIRING CONDUIT BOX AT 90000WPL</div><div>182. UNWIRING CONDUIT BOX AT 90500WPL</div><div>183. UNWIRING CONDUIT BOX AT 91000WPL</div><div>184. UNWIRING CONDUIT BOX AT 91500WPL</div><div>185. UNWIRING CONDUIT BOX AT 92000WPL</div><div>186. UNWIRING CONDUIT BOX AT 92500WPL</div><div>187. UNWIRING CONDUIT BOX AT 93000WPL</div><div>188. UNWIRING CONDUIT BOX AT 93500WPL</div><div>189. UNWIRING CONDUIT BOX AT 94000WPL</div><div>190. UNWIRING CONDUIT BOX AT 94500WPL</div><div>191. UNWIRING CONDUIT BOX AT 95000WPL</div><div>192. UNWIRING CONDUIT BOX AT 95500WPL</div><div>193. UNWIRING CONDUIT BOX AT 96000WPL</div><div>194. UNWIRING CONDUIT BOX AT 96500WPL</div><div>195. UNWIRING CONDUIT BOX AT 97000WPL</div><div>196. UNWIRING CONDUIT BOX AT 97500WPL</div><div>197. UNWIRING CONDUIT BOX AT 98000WPL</div><div>198. UNWIRING CONDUIT BOX AT 98500WPL</div><div>199. UNWIRING CONDUIT BOX AT 99000WPL</div><div>200. UNWIRING CONDUIT BOX AT 99500WPL</div><div>201. UNWIRING CONDUIT BOX AT 100000WPL</div><div>202. UNWIRING CONDUIT BOX AT 100500WPL</div><div>203. UNWIRING CONDUIT BOX AT 101000WPL</div><div>204. UNWIRING CONDUIT BOX AT 101500WPL</div><div>205. UNWIRING CONDUIT BOX AT 102000WPL</div><div>206. UNWIRING CONDUIT BOX AT 102500WPL</div><div>207. UNWIRING CONDUIT BOX AT 103000WPL</div><div>208. UNWIRING CONDUIT BOX AT 103500WPL</div><div>209. UNWIRING CONDUIT BOX AT 104000WPL</div><div>210. UNWIRING CONDUIT BOX AT 104500WPL</div><div>211. UNWIRING CONDUIT BOX AT 105000WPL</div><div>212. UNWIRING CONDUIT BOX AT 105500WPL</div><div>213. UNWIRING CONDUIT BOX AT 106000WPL</div><div>214. UNWIRING CONDUIT BOX AT 106500WPL</div><div>215. UNWIRING CONDUIT BOX AT 107000WPL</div><div>216. UNWIRING CONDUIT BOX AT 107500WPL</div><div>217. UNWIRING CONDUIT BOX AT 108000WPL</div><div>218. UNWIRING CONDUIT BOX AT 108500WPL</div><div>219. UNWIRING CONDUIT BOX AT 109000WPL</div><div>220. UNWIRING CONDUIT BOX AT 109500WPL</div><div>221. UNWIRING CONDUIT BOX AT 110000WPL</div><div>222. UNWIRING CONDUIT BOX AT 110500WPL</div><div>223. UNWIRING CONDUIT BOX AT 111000WPL</div><div>224. UNWIRING CONDUIT BOX AT 111500WPL</div><div>225. UNWIRING CONDUIT BOX AT 112000WPL</div><div>226. UNWIRING CONDUIT BOX AT 112500WPL</div><div>227. UNWIRING CONDUIT BOX AT 113000WPL</div><div>228. UNWIRING CONDUIT BOX AT 113500WPL</div><div>229. UNWIRING CONDUIT BOX AT 114000WPL</div><div>230. UNWIRING CONDUIT BOX AT 114500WPL</div><div>231. UNWIRING CONDUIT BOX AT 115000WPL</div><div>232. UNWIRING CONDUIT BOX AT 115500WPL</div><div>233. UNWIRING CONDUIT BOX AT 116000WPL</div><div>234. UNWIRING CONDUIT BOX AT 116500WPL</div><div>235. UNWIRING CONDUIT BOX AT 117000WPL</div><div>236. UNWIRING CONDUIT BOX AT 117500WPL</div><div>237. UNWIRING CONDUIT BOX AT 118000WPL</div><div>238. UNWIRING CONDUIT BOX AT 118500WPL</div><div>239. UNWIRING CONDUIT BOX AT 119000WPL</div><div>240. UNWIRING CONDUIT BOX AT 119500WPL</div><div>241. UNWIRING CONDUIT BOX AT 120000WPL</div><div>242. UNWIRING CONDUIT BOX AT 120500WPL</div><div>243. UNWIRING CONDUIT BOX AT 121000WPL</div><div>244. UNWIRING CONDUIT BOX AT 121500WPL</div><div>245. UNWIRING CONDUIT BOX AT 122000WPL</div><div>246. UNWIRING CONDUIT BOX AT 122500WPL</div><div>247. UNWIRING CONDUIT BOX AT 123000WPL</div><div>248. UNWIRING CONDUIT BOX AT 123500WPL</div><div>249. UNWIRING CONDUIT BOX AT 124000WPL</div><div>250. UNWIRING CONDUIT BOX AT 124500WPL</div><div>251. UNWIRING CONDUIT BOX AT 125000WPL</div><div>252. UNWIRING CONDUIT BOX AT 125500WPL</div><div>253. UNWIRING CONDUIT BOX AT 126000WPL</div><div>254. UNWIRING CONDUIT BOX AT 126500WPL</div><div>255. UNWIRING CONDUIT BOX AT 127000WPL</div><div>256. UNWIRING CONDUIT BOX AT 127500WPL</div><div>257. UNWIRING CONDUIT BOX AT 128000WPL</div><div>258. UNWIRING CONDUIT BOX AT 128500WPL</div><div>259. UNWIRING CONDUIT BOX AT 129000WPL</div><div>260. UNWIRING CONDUIT BOX AT 129500WPL</div><div>261. UNWIRING CONDUIT BOX AT 130000WPL</div><div>262. UNWIRING CONDUIT BOX AT 130500WPL</div><div>263. UNWIRING CONDUIT BOX AT 131000WPL</div><div>264. UNWIRING CONDUIT BOX AT 131500WPL</div><div>265. UNWIRING CONDUIT BOX AT 132000WPL</div><div>266. UNWIRING CONDUIT BOX AT 132500WPL</div><div>267. UNWIRING CONDUIT BOX AT 133000WPL</div><div>268. UNWIRING CONDUIT BOX AT 133500WPL</div><div>269. UNWIRING CONDUIT BOX AT 134000WPL</div><div>270. UNWIRING CONDUIT BOX AT 134500WPL</div><div>271. UNWIRING CONDUIT BOX AT 135000WPL</div><div>272. UNWIRING CONDUIT BOX AT 135500WPL</div><div>273. UNWIRING CONDUIT BOX AT 136000WPL</div><div>274. UNWIRING CONDUIT BOX AT 136500WPL</div><div>275. UNWIRING CONDUIT BOX AT 137000WPL</div><div>276. UNWIRING CONDUIT BOX AT 137500WPL</div><div>277. UNWIRING CONDUIT BOX AT 138000WPL</div><div>278. UNWIRING CONDUIT BOX AT 138500WPL</div><div>279. UNWIRING CONDUIT BOX AT 139000WPL</div><div>280. UNWIRING CONDUIT BOX AT 139500WPL</div><div>281. UNWIRING CONDUIT BOX AT 140000WPL</div><div>282. UNWIRING CONDUIT BOX AT 140500WPL</div><div>283. UNWIRING CONDUIT BOX AT 141000WPL</div><div>284. UNWIRING CONDUIT BOX AT 141500WPL</div><div>285. UNWIRING CONDUIT BOX AT 142000WPL</div><div>286. UNWIRING CONDUIT BOX AT 142500WPL</div><div>287. UNWIRING CONDUIT BOX AT 143000WPL</div><div>288. UNWIRING CONDUIT BOX AT 143500WPL</div><div>289. UNWIRING CONDUIT BOX AT 144000WPL</div><div>290. UNWIRING CONDUIT BOX AT 144500WPL</div><div>291. UNWIRING CONDUIT BOX AT 145000WPL</div><div>292. UNWIRING CONDUIT BOX AT 145500WPL</div><div>293. UNWIRING CONDUIT BOX AT 146000WPL</div><div>294. UNWIRING CONDUIT BOX AT 146500WPL</div><div>295. UNWIRING CONDUIT BOX AT 147000WPL</div><div>296. UNWIRING CONDUIT BOX AT 147500WPL</div><div>297. UNWIRING CONDUIT BOX AT 148000WPL</div><div>298. UNWIRING CONDUIT BOX AT 148500WPL</div><div>299. UNWIRING CONDUIT BOX AT 149000WPL</div><div>300. UNWIRING CONDUIT BOX AT 149500WPL</div><div>301. UNWIRING CONDUIT BOX AT 150000WPL</div><div>302. UNWIRING CONDUIT BOX AT 150500WPL</div><div>303. UNWIRING CONDUIT BOX AT 151000WPL</div><div>304. UNWIRING CONDUIT BOX AT 151500WPL</div><div>305. UNWIRING CONDUIT BOX AT 152000WPL</div><div>306. UNWIRING CONDUIT BOX AT 152500WPL</div><div>307. UNWIRING CONDUIT BOX AT 153000WPL</div><div>308. UNWIRING CONDUIT BOX AT 153500WPL</div><div>309. UNWIRING CONDUIT BOX AT 154000WPL</div><div>310. UNWIRING CONDUIT BOX AT 154500WPL</div><div>311. UNWIRING CONDUIT BOX AT 155000WPL</div><div>312. UNWIRING CONDUIT BOX AT 155500WPL</div><div>313. UNWIRING CONDUIT BOX AT 156000WPL</div><div>314. UNWIRING CONDUIT BOX AT 156500WPL</div><div>315. UNWIRING CONDUIT BOX AT 157000WPL</div><div>316. UNWIRING CONDUIT BOX AT 157500WPL</div><div>317. UNWIRING CONDUIT BOX AT 158000WPL</div><div>318. UNWIRING CONDUIT BOX AT 158500WPL</div><div>319. UNWIRING CONDUIT BOX AT 159000WPL</div><div>320. UNWIRING CONDUIT BOX AT 159500WPL</div><div>321. UNWIRING CONDUIT BOX AT 160000WPL</div><div>322. UNWIRING CONDUIT BOX AT 160500WPL</div><div>323. UNWIRING CONDUIT BOX AT 161000WPL</div><div>324. UNWIRING CONDUIT BOX AT 161500WPL</div><div>325. UNWIRING CONDUIT BOX AT 162000WPL</div><div>326. UNWIRING CONDUIT BOX AT 162500WPL</div><div>327. UNWIRING CONDUIT BOX AT 163000WPL</div><div>328. UNWIRING CONDUIT BOX AT 163500WPL</div><div>329. UNWIRING CONDUIT BOX AT 164000WPL</div><div>330. UNWIRING CONDUIT BOX AT 164500WPL</div><div>331. UNWIRING CONDUIT BOX AT 165000WPL</div><div>332. UNWIRING CONDUIT BOX AT 165500WPL</div><div>333. UNWIRING CONDUIT BOX AT 166000WPL</div><div>334. UNWIRING CONDUIT BOX AT 166500WPL</div><div>335. UNWIRING CONDUIT BOX AT 167000WPL</div><div>336. UNWIRING CONDUIT BOX AT 167500WPL</div><div>337. UNWIRING CONDUIT BOX AT 168000WPL</div><div>338. UNWIRING CONDUIT BOX AT 168500WPL</div><div>339. UNWIRING CONDUIT BOX AT 169000WPL</div><div>340. UNWIRING CONDUIT BOX AT 169500WPL</div><div>341. UNWIRING CONDUIT BOX AT 170000WPL</div><div>342. UNWIRING CONDUIT BOX AT 170500WPL</div><div>343. UNWIRING CONDUIT BOX AT 171000WPL</div><div>344. UNWIRING CONDUIT BOX AT 171500WPL</div><div>345. UNWIRING CONDUIT BOX AT 172000WPL</div><div>346. UNWIRING CONDUIT BOX AT 172500WPL</div><div>347. UNWIRING CONDUIT BOX AT 173000WPL</div><div>348. UNWIRING CONDUIT BOX AT 173500WPL</div><div>349. UNWIRING CONDUIT BOX AT 174000WPL</div><div>350. UNWIRING CONDUIT BOX AT 174500WPL</div><div>351. UNWIRING CONDUIT BOX AT 175000WPL</div><div>352. UNWIRING CONDUIT BOX AT 175500WPL</div><div>353. UNWIRING CONDUIT BOX AT 176000WPL</div><div>354. UNWIRING CONDUIT BOX AT 176500WPL</div><div>355. UNWIRING CONDUIT BOX AT 177000WPL</div><div>356. UNWIRING CONDUIT BOX AT 177500WPL</div><div>357. UNWIRING CONDUIT BOX AT 178000WPL</div><div>358. UNWIRING CONDUIT BOX AT 178500WPL</div><div>359. UNWIRING CONDUIT BOX AT 179000WPL</div><div>360. UNWIRING CONDUIT BOX AT 179500WPL</div><div>361. UNWIRING CONDUIT BOX AT 180000WPL</div><div>362. UNWIRING CONDUIT BOX AT 180500WPL</div><div>363. UNWIRING CONDUIT BOX AT 181000WPL</div><div>364. UNWIRING CONDUIT BOX AT 181500WPL</div><div>365. UNWIRING CONDUIT BOX AT 182000WPL</div><div>366. UNWIRING CONDUIT BOX AT 182500WPL</div><div>367. UNWIRING CONDUIT BOX AT 183000WPL</div><div>368. UNWIRING CONDUIT BOX AT 183500WPL</div><div>369. UNWIRING CONDUIT BOX AT 184000WPL</div><div>370. UNWIRING CONDUIT BOX AT 184500WPL</div><div>371. UNWIRING CONDUIT BOX AT 185000WPL</div><div>372. UNWIRING CONDUIT BOX AT 185500WPL</div><div>373. UNWIRING CONDUIT BOX AT 186000WPL</div><div>374. UNWIRING CONDUIT BOX AT 186500WPL</div><div>375. UNWIRING CONDUIT BOX AT 187000WPL</div><div>376. UNWIRING CONDUIT BOX AT 187500WPL</div><div>377. UNWIRING CONDUIT BOX AT 188000WPL</div><div>378. UNWIRING CONDUIT BOX AT 188500WPL</div><div>379. UNWIRING CONDUIT BOX AT 189000WPL</div><div>380. UNWIRING CONDUIT BOX AT 189500WPL</div><div>381. UNWIRING CONDUIT BOX AT 190000WPL</div><div>382. UNWIRING CONDUIT BOX AT 190500WPL</div><div>383. UNWIRING CONDUIT BOX AT 191000WPL</div><div>384. UNWIRING CONDUIT BOX AT 191500WPL</div><div>385. UNWIRING CONDUIT BOX AT 192000WPL</div><div>386. UNWIRING CONDUIT BOX AT 192500WPL</div><div>387. UNWIRING CONDUIT BOX AT 193000WPL</div><div>388. UNWIRING CONDUIT BOX AT 193500WPL</div><div>389. UNWIRING CONDUIT BOX AT 194000WPL</div><div>390. UNWIRING CONDUIT BOX AT 194500WPL</div><div>391. UNWIRING CONDUIT BOX AT 195000WPL</div><div>392. UNWIRING CONDUIT BOX AT 195500WPL</div><div>393. UNWIRING CONDUIT BOX AT 196000WPL</div><div>394. UNWIRING CONDUIT BOX AT 196500WPL</div><div>395. UNWIRING CONDUIT BOX AT 197000WPL</div><div>396. UNWIRING CONDUIT BOX AT 197500WPL</div><div>397. UNWIRING CONDUIT BOX AT 198000WPL</div><div>398. UNWIRING CONDUIT BOX AT 198500WPL</div><div>399. UNWIRING CONDUIT BOX AT 199000WPL</div><div>400. UNWIRING CONDUIT BOX AT 199500WPL</div><div>401. UNWIRING CONDUIT BOX AT 200000WPL</div><div>402. UNWIRING CONDUIT BOX AT 200500WPL</div><div>403. UNWIRING CONDUIT BOX AT 201000WPL</div><div>404. UNWIRING CONDUIT BOX AT 201500WPL</div><div>405. UNWIRING CONDUIT BOX AT 202000WPL</div><div>406. UNWIRING CONDUIT BOX AT 202500WPL</div><div>407. UNWIRING CONDUIT BOX AT 203000WPL</div><div>408. UNWIRING CONDUIT BOX AT 203500WPL</div><div>409. UNWIRING CONDUIT BOX AT 204000WPL</div><div>410. UNWIRING CONDUIT BOX AT 204500WPL</div><div>411. UNWIRING CONDUIT BOX AT 205000WPL</div><div>412. UNWIRING CONDUIT BOX AT 205500WPL</div><div>413. UNWIRING CONDUIT BOX AT 206000WPL</div><div>414. UNWIRING CONDUIT BOX AT 206500WPL</div><div>415. UNWIRING CONDUIT BOX AT 207000WPL</div><div>416. UNWIRING CONDUIT BOX AT 207500WPL</div><div>417. UNWIRING CONDUIT BOX AT 208000WPL</div><div>418. UNWIRING CONDUIT BOX AT 208500WPL</div><div>419. UNWIRING CONDUIT BOX AT 209000WPL</div><div>420. UNWIRING CONDUIT BOX AT 209500WPL</div><div>421. UNWIRING CONDUIT BOX AT 210000WPL</div><div>422. UNWIRING CONDUIT BOX AT 210500WPL</div><div>423. UNWIRING CONDUIT BOX AT 211000WPL</div><div>424. UNWIRING CONDUIT BOX AT 211500WPL</div><div>425. UNWIRING CONDUIT BOX AT 212000WPL</div><div>426. UNWIRING CONDUIT BOX AT 212500WPL</div><div>427. UNWIRING CONDUIT BOX AT 213000WPL</div><div>428. UNWIRING CONDUIT BOX AT 213500WPL</div><div>429. UNWIRING CONDUIT BOX AT 214000WPL</div><div>430. UNWIRING CONDUIT BOX AT 214500WPL</div><div>431. UNWIRING CONDUIT BOX AT 215000WPL</div><div>432. UNWIRING CONDUIT BOX AT 215500WPL</div><div>433. UNWIRING CONDUIT BOX AT 216000WPL</div><div>434. UNWIRING CONDUIT BOX AT 216500WPL</div><div>435. UNWIRING CONDUIT BOX AT 217000WPL</div><div>436. UNWIRING CONDUIT BOX AT 217500WPL</div><div>437. UNWIRING CONDUIT BOX AT 218000WPL</div><div>438. UNWIRING CONDUIT BOX AT 218500WPL</div><div>439. UNWIRING CONDUIT BOX AT 219000WPL</div><div>440. UNWIRING CONDUIT BOX AT 219500WPL</div><div>441. UNWIRING CONDUIT BOX AT 220000WPL</div><div>442. UNWIRING CONDUIT BOX AT 220500WPL</div><div>443. UNWIRING CONDUIT BOX AT 221000WPL</div><div>444. UNWIRING CONDUIT BOX AT 221500WPL</div><div>445. UNWIRING CONDUIT BOX AT 222000WPL</div><div>446. UNWIRING CONDUIT BOX AT 222500WPL</div><div>447. UNWIRING CONDUIT BOX AT 223000WPL</div><div>448. UNWIRING CONDUIT BOX AT 223500WPL</div><div>449. UNWIRING CONDUIT BOX AT 224000WPL</div><div>450. UNWIRING CONDUIT BOX AT 224500WPL</div><div>451. UNWIRING CONDUIT BOX AT 225000WPL</div><div>452. UNWIRING CONDUIT BOX AT 225500WPL</div><div>453. UNWIRING CONDUIT BOX AT 226000WPL</div><div>454. UNWIRING CONDUIT BOX AT 226500WPL</div><div>455. UNWIRING CONDUIT BOX AT 227000WPL</div><div>456. UNWIRING CONDUIT BOX AT 227500WPL</div><div>457. UNWIRING CONDUIT BOX AT 228000WPL</div><div>458. UNWIRING CONDUIT BOX AT 228500WPL</div><div>459. UNWIRING CONDUIT BOX AT 229000WPL</div><div>460. UNWIRING CONDUIT BOX AT 229500WPL</div><div>461. UNWIRING CONDUIT BOX AT 230000WPL</div><div>462. UNWIRING CONDUIT BOX AT 230500WPL</div><div>463. UNWIRING CONDUIT BOX AT 231000WPL</div><div>464. UNWIRING CONDUIT BOX AT 231500WPL</div><div>465. UNWIRING CONDUIT BOX AT 232000WPL</div><div>466. UNWIRING CONDUIT BOX AT 232500WPL</div><div>4</div></div>															