

SPECIFICATION FOR LEAD POT

Date 2025/06/05
Ref. No. NTP-OR-HC-SCM/250

MANUFACTURE, SUPPLY AND DELIVERY OF LEAD PRODUCTS FOR P

You are hereby cordially invited to provide NTP Radioisotopes SOC Ltd with a quotation for the manufacture, supply, and delivery of several Lead products. Associated with this, NTP has very specific conditions associated to the quantities delivered and shielding requirements as described below.

1. GENERAL

The following Lead products are included in this request:

- Novatec-P Lead pot components
- Standard Lead pots: 3.2mm, 6mm, 13.5mm and 26mm
- Type A40 B Lead pot components.
- Type A50 B Lead pot components. -
- Type A60 B Lead pot components.
- Type A70 A lead pot components.
- Lutetium Lead pot components

Technical as well as quality inspections shall be done according to the approved drawings supplied by NTP. Inspections shall be done for each batch delivered. Non-conforming products shall be returned and corrected on the supplier's expense.

Manufactured components shall as a minimum be accompanied by the relevant data sheets/packs which as a minimum shall contain material certificates.

As part of the tender quality control plan (QCP) shall be submitted to NTP for evaluation. On placing the order, the quality control plan shall be re-evaluated as NTP shall have the right to place hold points on any activity performed during manufacturing for the purpose of witnessing. These hold points shall be identified before manufacturing commences.

The QCP Shall include, but not be limited to the following activities:

- Material receiving inspection accompanied by material certificates.
- Material stamping/markings carry over to items.

The manufacturing process as defined and agreed upon by the NTP and the supplier shall be surveyed and audited on two additional tests assemblies, over and above the three qualification assemblies.

2. SPECIFICATIONS

Description	Specification	Material	Testing	Colour	Quantity required/month
Lead pot 3.2mm	Drawing	4% Antimonial Lead	Shielding	Blue	280
Lead pot 6mm	Drawing	4% Antimonial Lead	Shielding	Blue	200
Lead pot 13.2mm	Drawing	4% Antimonial Lead	Shielding	Blue	150
Lead Pot 26mm	Drawing	4% Antimonial Lead	Shielding	Blue	100
Novatec P-Pot	Drawing	4% Antimonial Lead	Shielding	N/A	300
A40 B	1-15066- 0000/01/02/03	4% Antimonial Lead	Dimensional	N/A	20
A50 B	145067- 0000/01/02/03	4% Antimonial Lead	Dimensional	N/A	40
A60 B	H5075- OO00/01/02/03	4% Antimonial Lead	Dimensional	N/A	50
A70 A	H5033- OO00/01/02	4% Antimonial Lead	Dimensional	N/A	30
LU 177 Single Dose Lead Pot	145248-01-00	4% Antimonial Lead	Dimensional	Blue	100

*Note: Colour specification on standard Lead Pots is done by spray painting two coats of red paint and then one coat blue.

*Note: Shielding test shall be performed at NTP

Quantities specified are estimates of the monthly usage, this may change depending on the customer demand. Increased/decreased quantities required shall be communicated by the relevant Manager in due time.

Any changes on the drawings or specification requirements shall be communicated to the supplier and approved drawings shall be supplied for manufacture.

RESTRICTED

3. DELIVERY REQUIREMENTS

- Every department shall request an individual quote for a specified number of pots/components, depending on the demand.
- The delivery of Lead products is production dependant and since production varies it might be that the above-mentioned estimate for a month is not met.
- The quote for a tender shall include the fixed labour cost and mark-up on the lead/raw material for the year.
- Delivery of the product shall be as soon as reasonably possible, and any delays shall be communicated to the relevant Manager. Expected lead times shall be stated on the quotation.

4. APPROVAL OF SUPPLIER AND TRIAL PERIOD

Suppliers shall undergo a trial period. The approval process and trial period involve the following: ●
The quote received from the supplier must include or address all the requirements as described above.

- On approval of the quotation received an official order shall be placed.
- The delivery batch of Lead products shall be visually inspected in accordance with the acceptance criteria given in section 2.
- Products which are not approved by NTP for use shall be returned to the supplier for correction. Corrections shall be done at the supplier's own cost.
- Based on product quality and service delivery by the supplier, the supplier shall either be approved or rejected for further supply of Lead products.

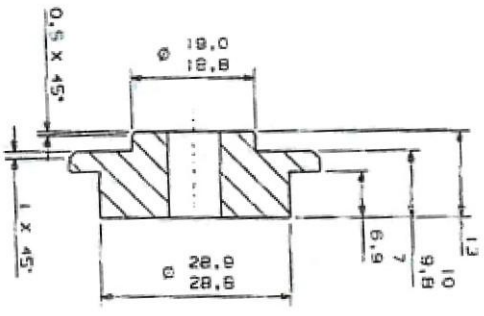
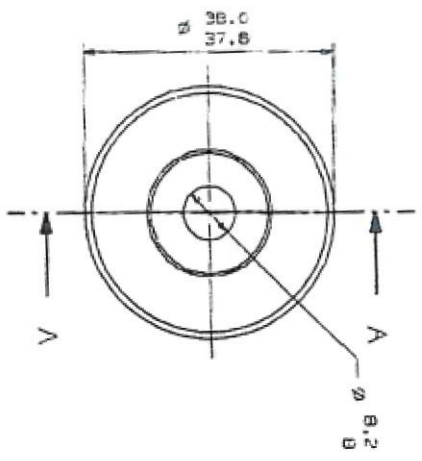
DO NOT SCALE



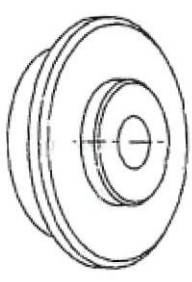
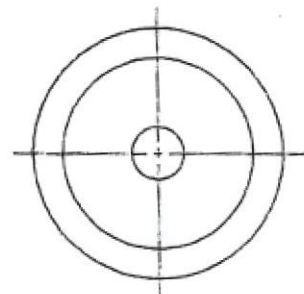
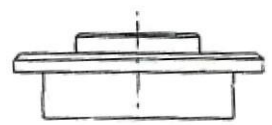
1/4 IN. DIA. PT. ASK

CO. PROJECT

THIS DRAWING IS THE PROPERTY OF
 THE MANUFACTURER AND IS NOT TO BE
 REPRODUCED OR TRANSMITTED IN ANY
 FORM OR BY ANY MEANS, ELECTRONIC
 OR MECHANICAL, INCLUDING PHOTOCOPYING,
 RECORDING, OR BY ANY INFORMATION
 STORAGE AND RETRIEVAL SYSTEM, WITHOUT
 THE WRITTEN PERMISSION OF THE
 MANUFACTURER.



SECTION A - A



MAT'L: 2 Aluminum Lead

REV.	DATE	DESCRIPTION	DR. NO.	DATE	UNLESS OTHERWISE SPECIFIED	MACH. FIN. UNLESS OTHERWISE SPECIFIED	PROJ. NO.	REV.	DATE	DESCRIPTION	DATE	REVISION
1		FORGED FROM ALUMINUM SPECIAL FOR MANUFACTURE			REQUIRE ALL SHARP EDGES SURFACE FINISH: 32 SPEC. FINISH: 150 OR BETTER DIM. TOLER. 0.001 MATERIAL: 2024-T3 MIL. SPEC. 2024-T3 MIL. SPEC. 2024-T3	OVER 1.0 TO 1.5 1.5 TO 3.0 3.0 TO 6.0 6.0 TO 12.0 12.0 TO 24.0 24.0 TO 48.0 48.0 TO 96.0 96.0 TO 192.0 192.0 TO 384.0 384.0 TO 768.0 768.0 TO 1536.0 1536.0 TO 3072.0 3072.0 TO 6144.0 6144.0 TO 12288.0 12288.0 TO 24576.0 24576.0 TO 49152.0 49152.0 TO 98304.0 98304.0 TO 196608.0 196608.0 TO 393216.0 393216.0 TO 786432.0 786432.0 TO 1572864.0 1572864.0 TO 3145728.0 3145728.0 TO 6291456.0 6291456.0 TO 12582912.0 12582912.0 TO 25165824.0 25165824.0 TO 50331648.0 50331648.0 TO 100663296.0 100663296.0 TO 201326592.0 201326592.0 TO 402653184.0 402653184.0 TO 805306368.0 805306368.0 TO 1610612736.0 1610612736.0 TO 3221225472.0 3221225472.0 TO 6442450944.0 6442450944.0 TO 12884901888.0 12884901888.0 TO 25769803776.0 25769803776.0 TO 51539607552.0 51539607552.0 TO 103079215104.0 103079215104.0 TO 206158430208.0 206158430208.0 TO 412316860416.0 412316860416.0 TO 824633720832.0 824633720832.0 TO 1649267441664.0 1649267441664.0 TO 3298534883328.0 3298534883328.0 TO 6597069766656.0 6597069766656.0 TO 13194139533312.0 13194139533312.0 TO 26388279066624.0 26388279066624.0 TO 52776558133248.0 52776558133248.0 TO 105553116266496.0 105553116266496.0 TO 211106232532992.0 211106232532992.0 TO 422212465065984.0 422212465065984.0 TO 844424930131968.0 844424930131968.0 TO 1688849860263936.0 1688849860263936.0 TO 3377699720527872.0 3377699720527872.0 TO 6755399441055744.0 6755399441055744.0 TO 13510798882111488.0 13510798882111488.0 TO 27021597764222976.0 27021597764222976.0 TO 54043195528445952.0 54043195528445952.0 TO 108086391056891840.0 108086391056891840.0 TO 216172782113783680.0 216172782113783680.0 TO 432345564227567360.0 432345564227567360.0 TO 864691128455134720.0 864691128455134720.0 TO 1729382256910269440.0 1729382256910269440.0 TO 3458764513820538880.0 3458764513820538880.0 TO 6917529027641077760.0 6917529027641077760.0 TO 13835058055282155520.0 13835058055282155520.0 TO 27670116110564311040.0 27670116110564311040.0 TO 55340232221128622080.0 55340232221128622080.0 TO 110680464422257244160.0 110680464422257244160.0 TO 221360928844514488320.0 221360928844514488320.0 TO 442721857689028976640.0 442721857689028976640.0 TO 885443715378057953280.0 885443715378057953280.0 TO 1770887430756115906560.0 1770887430756115906560.0 TO 3541774861512231813120.0 3541774861512231813120.0 TO 7083549723024463626240.0 7083549723024463626240.0 TO 14167099446048927252480.0 14167099446048927252480.0 TO 28334198892097854504960.0 28334198892097854504960.0 TO 56668397784195709009920.0 56668397784195709009920.0 TO 113336795568391418019840.0 113336795568391418019840.0 TO 226673591136782836039680.0 226673591136782836039680.0 TO 453347182273565672079360.0 453347182273565672079360.0 TO 906694364547131344158720.0 906694364547131344158720.0 TO 1813388729094262688317440.0 1813388729094262688317440.0 TO 3626777458188525376634880.0 3626777458188525376634880.0 TO 7253554916377050753269760.0 7253554916377050753269760.0 TO 14507109832754101506539520.0 14507109832754101506539520.0 TO 29014219665508203013079040.0 29014219665508203013079040.0 TO 58028439331016406026158080.0 58028439331016406026158080.0 TO 116056878662032812052316160.0 116056878662032812052316160.0 TO 232113757324065624104632320.0 232113757324065624104632320.0 TO 464227514648131248209264640.0 464227514648131248209264640.0 TO 928455029296262496418529280.0 928455029296262496418529280.0 TO 185691005859252492837058560.0 185691005859252492837058560.0 TO 371382011718504985674117120.0 371382011718504985674117120.0 TO 742764023437009971348234240.0 742764023437009971348234240.0 TO 148552804687401942669668480.0 148552804687401942669668480.0 TO 297105609374803885339336960.0 297105609374803885339336960.0 TO 594211218749607770678673920.0 594211218749607770678673920.0 TO 1188422437499215413577347840.0 1188422437499215413577347840.0 TO 2376844874998430827154695680.0 2376844874998430827154695680.0 TO 4753689749996861654309391360.0 4753689749996861654309391360.0 TO 9507379499993723308618782720.0 9507379499993723308618782720.0 TO 19014758999986446617237565440.0 19014758999986446617237565440.0 TO 38029517999972893234475130880.0 38029517999972893234475130880.0 TO 76059035999945786468950261760.0 76059035999945786468950261760.0 TO 1521180719999115729379005353280.0 1521180719999115729379005353280.0 TO 3042361439998231458758010706560.0 3042361439998231458758010706560.0 TO 6084722879996462917516021413120.0 6084722879996462917516021413120.0 TO 12169445759992925835032042826240.0 12169445759992925835032042826240.0 TO 24338891519985851670064085652480.0 24338891519985851670064085652480.0 TO 48677783039971703340128171304960.0 48677783039971703340128171304960.0 TO 97355566079943406680256342609920.0 97355566079943406680256342609920.0 TO 194711132159868813376512685211840.0 194711132159868813376512685211840.0 TO 389422264319737626753025370423680.0 389422264319737626753025370423680.0 TO 778844528639475253506050740847360.0 778844528639475253506050740847360.0 TO 155768905727955050701211141694720.0 155768905727955050701211141694720.0 TO 311537811455910101402422283389440.0 311537811455910101402422283389440.0 TO 623075622911820202804844566778880.0 623075622911820202804844566778880.0 TO 12461512458236404056096891333577760.0 12461512458236404056096891333577760.0 TO 24923024916472808112193782667155520.0 24923024916472808112193782667155520.0 TO 49846049832945616224387553334111040.0 49846049832945616224387553334111040.0 TO 996920996658912324487751066682222080.0 996920996658912324487751066682222080.0 TO 1993841993317824648955021333364444160.0 1993841993317824648955021333364444160.0 TO 3987683986635649297910042666728888320.0 3987683986635649297910042666728888320.0 TO 7975367973271298595820085333457776640.0 7975367973271298595820085333457776640.0 TO 15950735946542597191640170666915553280.0 15950735946542597191640170666915553280.0 TO 31901471893085194383280341333381111040.0 31901471893085194383280341333381111040.0 TO 63802943786170388766560682666722222080.0 63802943786170388766560682666722222080.0 TO 12760588757234077753312135333444444160.0 12760588757234077753312135333444444160.0 TO 25521177514468155506624270666888888320.0 25521177514468155506624270666888888320.0 TO 5104235502893631101132453333777776640.0 5104235502893631101132453333777776640.0 TO 1020847100578726220226686667555553280.0 1020847100578726220226686667555553280.0 TO 204169420115745244045337333311111040.0 204169420115745244045337333311111040.0 TO 4083388402314904880906746666222222080.0 4083388402314904880906746666222222080.0 TO 8166776804629809761813493333444444160.0 8166776804629809761813493333444444160.0 TO 1633355360925961952362686666888888320.0 1633355360925961952362686666888888320.0 TO 3266710721851923904725373333777776640.0 3266710721851923904725373333777776640.0 TO 6533421443703847809450746666222222080.0 6533421443703847809450746666222222080.0 TO 13066842887407695618901493333444444160.0 13066842887407695618901493333444444160.0 TO 2613368577481539123780298666688888320.0 2613368577481539123780298666688888320.0 TO 52267371549630782475605973333777776640.0 52267371549630782475605973333777776640.0 TO 10453474309926156951121170666888888320.0 10453474309926156951121170666888888320.0 TO 209069486198523139022423413333777776640.0 209069486198523139022423413333777776640.0 TO 418138972397046278044846826667555553280.0 418138972397046278044846826667555553280.0 TO 8362779447940925560896975333444444160.0 8362779447940925560896975333444444160.0 TO 167255588958818511217793950666888888320.0 167255588958818511217793950666888888320.0 TO 33451117791763702243559013333777776640.0 33451117791763702243559013333777776640.0 TO 6690223558352740448711818666688888320.0 6690223558352740448711818666688888320.0 TO 1338044711670488097433573333444444160.0 1338044711670488097433573333444444160.0 TO 267608942334097619486706666888888320.0 267608942334097619486706666888888320.0 TO 535217884668195238973333777776640.0 535217884668195238973333777776640.0 TO 1070435737336390479546675333444444160.0 1070435737336390479546675333444444160.0 TO 2140871474672780959093311111040.0 214087147467278095909331111040.0 TO 4281742949345561918186622222080.0 4281742949345561918186622222080.0 TO 8563485898691123836373444444160.0 8563485898691123836373444444160.0 TO 1712697179738247667274888888320.0 1712697179738247667274888888320.0 TO 3425394359476495334548777776640.0 3425394359476495334548777776640.0 TO 68507887189529906690975333444444160.0 68507887189529906690975333444444160.0 TO 1370157743790598133819506666888888320.0 1370157743790598133819506666888888320.0 TO 2740315487581196267639113333777776640.0 2740315487581196267639113333777776640.0 TO 548063097516239253527822222080.0 548063097516239253527822222080.0 TO 1096126195032474506557644444160.0 1096126195032474506557644444160.0 TO 21922523900649490131152888888320.0 21922523900649490131152888888320.0 TO 4384504780129898026230577776640.0 4384504780129898026230577776640.0 TO 876900956025979605246153333444444160.0 876900956025979605246153333444444160.0 TO 175380191205195921049226666888888320.0 175380191205195921049226666888888320.0 TO 350760382410391842098453333777776640.0 350760382410391842098453333777776640.0 TO 701520764820783684196906666888888320.0 701520764820783684196906666888888320.0 TO 1403041529641567368393813333444444160.0 1403041529641567368393813333444444160.0 TO 28060830592831347367876666888888320.0 28060830592831347367876666888888320.0 TO 561216611856626947357553333777776640.0 561216611856626947357553333777776640.0 TO 1122433223713258947115106666888888320.0 1122433223713258947115106666888888320.0 TO 224486644742651789423013333444444160.0 224486644742651789423013333444444160.0 TO 448973289485303578846026666888888320.0 448973289485303578846026666888888320.0 TO 897946578970607157692053333777776640.0 897946578970607157692053333777776640.0 TO 1795893157941214353884106666888888320.0 1795893157941214353884106666888888320.0 TO 3591786315882428707768213333444444160.0 3591786315882428707768213333444444160.0 TO 7183572631764857415536426666888888320.0 7183572631764857415536426666888888320.0 TO 14367145263329114311072853333777776640.0 14367145263329114311072853333777776640.0 TO 287342905266582286221456666888888320.0 287342905266582286221456666888888320.0 TO 574685810533164572442913333444444160.0 574685810533164572442913333444444160.0 TO 1149371621066329144888426666888888320.0 1149371621066329144888426666888888320.0 TO 2298743242132658297777653333777776640.0 2298743242132658297777653333777776640.0 TO 459748648426531659555106666888888320.0 459748648426531659555106666888888320.0 TO 919497296853063319110213333444444160.0 919497296853063319110213333444444160.0 TO 1838994593706126682204253333777776640.0 1838994593706126682204253333777776640.0 TO 367798918741225336440856666888888320.0 367798918741225336440856666888888320.0 TO 735597837482450672881713333444444160.0 735597837482450672881713333444444160.0 TO 1471195674964901347763426666888888320.0 1471195674964901347763426666888888320.0 TO 2942391349929802695526853333777776640.0 2942391349929802695526853333777776640.0 TO 5884782699859605391053706666888888320.0 5884782699859605391053706666888888320.0 TO 1176956539971921082206713333444444160.0 1176956539971921082206713333444444160.0 TO 2353913079943842164413426666888888320.0 2353913079943842164413426666888888320.0 TO 4707826159887684328826853333777776640.0 4707826159887684328826853333777776640.0 TO 9415652319775368657653706666888888320.0 9415652319775368657653706666888888320.0 TO 1883130463955073731530713333444444160.0 1883130463955073731530713333444444160.0 TO 376626092791014746306142666						

REV	ZONE	DESCRIPTION	ECP NUMBER	DRAWN	CHK'D	DATE
0.1		ISSUED FOR APPROVAL		GLM		
1		ISSUED FOR MANUFACTURE		GLM		

Top View

SECTION A-A

3D View

ITEM	QTY	TITLE	MATERIAL	DRAWING NO
2	1	PORT LID	4% ANTIMONIAL LEAD	H5248-00-02
1	1	PORT BASE	4% ANTIMONIAL LEAD	H5248-00-01

UNLESS OTHERWISE STATED DEBUR AND REMOVE ALL SHARP EDGES SURFACE TEXTURE: $\sqrt{1.6}$		IF IN DOUBT ASK MACHINING TOLERANCES OVER - TO UNDER - TO ANGLES	1:1 APPROVED CHECKED DRAWN	NAME DATE SIGNATURE
SCREW THREAD: ISO 6H 6g GEOMETRICAL TOLERANCES: SURF. FINISH: WELDING SYMBOLS: DO NOT SCALE UNITS : mm	0.4 0.2 0.1 0.2 0.1 0.2 0.1 0.2 0.1	1000-2000 2000 PLUS 11.2 11°	10/10/11 10/10/11 10/10/11 10/10/11 10/10/11 10/10/11 10/10/11 10/10/11	V.S. 20/10/12 G.L.M. 20/10/12

PROJECT: Lu-177 TRANSPORT CONTAINER

TEAMCENTER No: H5248-00-00

TITLE: Lu-177 LEAD PORT

DWG NO: H5248-00-00

DESTROY ALL PREVIOUS PRINTS

A3

SHEET 1 OF 1

PROJECTION


NTP
Actively enhancing life



FOR INFORMATION ONLY

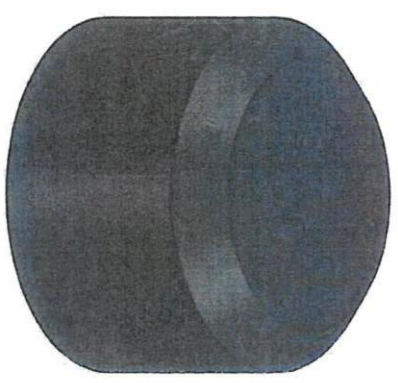
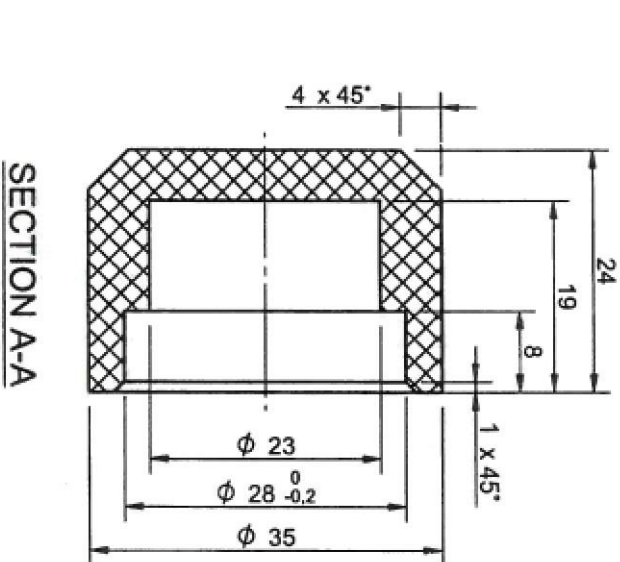
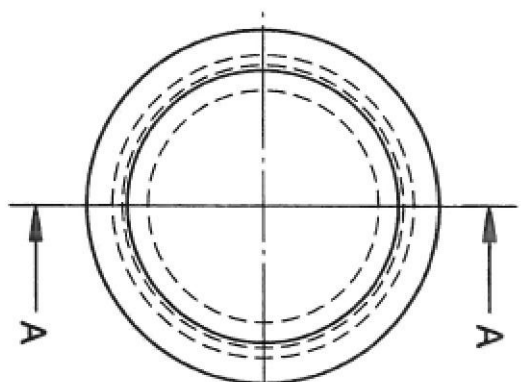
NTP
13 Nov. 2015

H5248-00-00

REV	ZONE	DESCRIPTION	ECP NUMBER	DRAWN	CHKD	DATE
0.1		ISSUED FOR APPROVAL		GLM		
1		ISSUED FOR MANUFACTURE		GLM		

UNLESS OTHERWISE STATED DEBUR AND REMOVE ALL SHARP EDGES SURFACE TEXTURE: $\sqrt{1}$ μ m SCREW THREAD: ISO RH 6g GEOMETRICAL TOLERANCES: SAMS 10T11 WELDING SYMBOLS: SAMS 2053 DO NOT SCALE UNITS: mm	MACHINING TOLERANCES <table border="1"> <tr> <th>Open. Tol</th> <th>MD</th> </tr> <tr> <td>0-5</td> <td>0.1</td> </tr> <tr> <td>0.25</td> <td>0.2</td> </tr> <tr> <td>0.125</td> <td>0.2</td> </tr> <tr> <td>0.0625</td> <td>0.2</td> </tr> <tr> <td>0.03125</td> <td>0.2</td> </tr> <tr> <td>0.015625</td> <td>0.2</td> </tr> <tr> <td>0.0078125</td> <td>0.2</td> </tr> <tr> <td>0.00390625</td> <td>0.2</td> </tr> <tr> <td>0.001953125</td> <td>0.2</td> </tr> </table>	Open. Tol	MD	0-5	0.1	0.25	0.2	0.125	0.2	0.0625	0.2	0.03125	0.2	0.015625	0.2	0.0078125	0.2	0.00390625	0.2	0.001953125	0.2	IF IN DOUBT ASK <table border="1"> <tr> <th>NAME</th> <th>SIGNATURE</th> </tr> <tr> <td>DATE</td> <td></td> </tr> </table>	NAME	SIGNATURE	DATE		Activity enhancing life  COPYRIGHT THIS DRAWING IS THE PROPERTY OF NTP AND MAY NOT BE REPRODUCED OR COPIED OR COMMUNICATED TO A THIRD PARTY OR USED EITHER WHOLLY OR IN PART FOR ANY PURPOSE OTHER THAN THAT FOR WHICH IT IS SUPPLIED.
		Open. Tol	MD																								
		0-5	0.1																								
		0.25	0.2																								
		0.125	0.2																								
0.0625	0.2																										
0.03125	0.2																										
0.015625	0.2																										
0.0078125	0.2																										
0.00390625	0.2																										
0.001953125	0.2																										
NAME	SIGNATURE																										
DATE																											
2:1	APPROVED	DATE																									
20150312	GLM	20150312																									
20150312	GLM	20150312																									
20150312	GLM	20150312																									

PROJECT: Lu - 177 TRANSPOR CONTAINER	DESTROY ALL PREVIOUS PRINTS A3 SHEET 1 OF 1 PROJECTION
TEAMCENTER No H5248-00-02	
TITLE: PORT LID DWG NO: H5248-00-02	



REV	ZONE	DESCRIPTION	ECP NUMBER	DRAWN	CHK'D	DATE
0.1		ISSUED FOR APPROVAL		GLM		
1		ISSUED FOR MANUFACTURE		GLM		

UNLESS OTHERWISE STATED		IF IN DOUBT ASK	
DEBUR AND REMOVE ALL SHARP EDGES	MACHINING TOLERANCES	2.1	NAME DATE SIGNATURE
SURFACE TEXTURE: $\sqrt{32}$ μm	OVER-TO	MS	<i>[Signature]</i>
SCREW THREAD: ISO 6H 6g	UD	MS	<i>[Signature]</i>
GEOMETRICAL TOLERANCES:	4.9	MS	<i>[Signature]</i>
SAKS 10111	20-120	MS	<i>[Signature]</i>
WELDING SYMBOLS:	100-200	MS	<i>[Signature]</i>
SAKS 2055	200-1000	MS	<i>[Signature]</i>
DO NOT SCALE	1000-2000	MS	<i>[Signature]</i>
UNITS : mm	2000 PLUS	MS	<i>[Signature]</i>
	MINUS	MS	<i>[Signature]</i>

Top View

SECTION A-A

3D View

NOTE:
POWDER COAT ACCORDING TO CLIENT SPECIFICATION

MAT: 4% ANTIMONIAL LEAD

FOR INFORMATION ONLY

NTP

13 MAR 2015

COPYRIGHT		PROJECT: LU - 177 TRANSPORT CONTAINER	
NTP		TEAMCENTER NO: H5248-00-01	DESTROY ALL PREVIOUS PRINTS
THIS DRAWING IS THE PROPERTY OF NTP AND MUST NOT BE REPRODUCED OR TRANSMITTED IN ANY FORM OR BY ANY MEANS WITHOUT THE WRITTEN AUTHORITY OF NTP. IT IS TO BE USED ONLY FOR THE PURPOSES SPECIFIED AND IS NOT TO BE USED FOR ANY OTHER PURPOSE OTHER THAN THAT FOR WHICH IT IS SUPPLIED.		TITLE: PORT BASE	A3
		DWG NO: H5248-00-01	SHEET 1 OF 1
			PROJECTION

1

REVISION

DO NOT SCALE



IF IN DOUBT ASK



MATERIAL: CAP SCREW M8 x 70 -01N 912 (A2)



REV	ZONE	DESCRIPTION	DATE	BY
1		ISSUE FOR APPROVAL	18/12/2003	JCT
2		REMOVE ALL SHARP EDGES	18/12/2003	BP
3		SURFACE TEXTURE: 1.0/0.2	2004/05/03	BP
4		SCREW THREAD: ISO M8 X 0.75		
5		REMOVE ALL SHARP EDGES		
6		SURFACE TEXTURE: 1.0/0.2		
7		SCREW THREAD: ISO M8 X 0.75		
8		REMOVE ALL SHARP EDGES		
9		SURFACE TEXTURE: 1.0/0.2		
10		SCREW THREAD: ISO M8 X 0.75		
11		REMOVE ALL SHARP EDGES		
12		SURFACE TEXTURE: 1.0/0.2		
13		SCREW THREAD: ISO M8 X 0.75		
14		REMOVE ALL SHARP EDGES		
15		SURFACE TEXTURE: 1.0/0.2		
16		SCREW THREAD: ISO M8 X 0.75		
17		REMOVE ALL SHARP EDGES		
18		SURFACE TEXTURE: 1.0/0.2		
19		SCREW THREAD: ISO M8 X 0.75		
20		REMOVE ALL SHARP EDGES		
21		SURFACE TEXTURE: 1.0/0.2		
22		SCREW THREAD: ISO M8 X 0.75		
23		REMOVE ALL SHARP EDGES		
24		SURFACE TEXTURE: 1.0/0.2		
25		SCREW THREAD: ISO M8 X 0.75		
26		REMOVE ALL SHARP EDGES		
27		SURFACE TEXTURE: 1.0/0.2		
28		SCREW THREAD: ISO M8 X 0.75		
29		REMOVE ALL SHARP EDGES		
30		SURFACE TEXTURE: 1.0/0.2		
31		SCREW THREAD: ISO M8 X 0.75		
32		REMOVE ALL SHARP EDGES		
33		SURFACE TEXTURE: 1.0/0.2		
34		SCREW THREAD: ISO M8 X 0.75		
35		REMOVE ALL SHARP EDGES		
36		SURFACE TEXTURE: 1.0/0.2		
37		SCREW THREAD: ISO M8 X 0.75		
38		REMOVE ALL SHARP EDGES		
39		SURFACE TEXTURE: 1.0/0.2		
40		SCREW THREAD: ISO M8 X 0.75		
41		REMOVE ALL SHARP EDGES		
42		SURFACE TEXTURE: 1.0/0.2		
43		SCREW THREAD: ISO M8 X 0.75		
44		REMOVE ALL SHARP EDGES		
45		SURFACE TEXTURE: 1.0/0.2		
46		SCREW THREAD: ISO M8 X 0.75		
47		REMOVE ALL SHARP EDGES		
48		SURFACE TEXTURE: 1.0/0.2		
49		SCREW THREAD: ISO M8 X 0.75		
50		REMOVE ALL SHARP EDGES		
51		SURFACE TEXTURE: 1.0/0.2		
52		SCREW THREAD: ISO M8 X 0.75		
53		REMOVE ALL SHARP EDGES		
54		SURFACE TEXTURE: 1.0/0.2		
55		SCREW THREAD: ISO M8 X 0.75		
56		REMOVE ALL SHARP EDGES		
57		SURFACE TEXTURE: 1.0/0.2		
58		SCREW THREAD: ISO M8 X 0.75		
59		REMOVE ALL SHARP EDGES		
60		SURFACE TEXTURE: 1.0/0.2		
61		SCREW THREAD: ISO M8 X 0.75		
62		REMOVE ALL SHARP EDGES		
63		SURFACE TEXTURE: 1.0/0.2		
64		SCREW THREAD: ISO M8 X 0.75		
65		REMOVE ALL SHARP EDGES		
66		SURFACE TEXTURE: 1.0/0.2		
67		SCREW THREAD: ISO M8 X 0.75		
68		REMOVE ALL SHARP EDGES		
69		SURFACE TEXTURE: 1.0/0.2		
70		SCREW THREAD: ISO M8 X 0.75		
71		REMOVE ALL SHARP EDGES		
72		SURFACE TEXTURE: 1.0/0.2		
73		SCREW THREAD: ISO M8 X 0.75		
74		REMOVE ALL SHARP EDGES		
75		SURFACE TEXTURE: 1.0/0.2		
76		SCREW THREAD: ISO M8 X 0.75		
77		REMOVE ALL SHARP EDGES		
78		SURFACE TEXTURE: 1.0/0.2		
79		SCREW THREAD: ISO M8 X 0.75		
80		REMOVE ALL SHARP EDGES		
81		SURFACE TEXTURE: 1.0/0.2		
82		SCREW THREAD: ISO M8 X 0.75		
83		REMOVE ALL SHARP EDGES		
84		SURFACE TEXTURE: 1.0/0.2		
85		SCREW THREAD: ISO M8 X 0.75		
86		REMOVE ALL SHARP EDGES		
87		SURFACE TEXTURE: 1.0/0.2		
88		SCREW THREAD: ISO M8 X 0.75		
89		REMOVE ALL SHARP EDGES		
90		SURFACE TEXTURE: 1.0/0.2		
91		SCREW THREAD: ISO M8 X 0.75		
92		REMOVE ALL SHARP EDGES		
93		SURFACE TEXTURE: 1.0/0.2		
94		SCREW THREAD: ISO M8 X 0.75		
95		REMOVE ALL SHARP EDGES		
96		SURFACE TEXTURE: 1.0/0.2		
97		SCREW THREAD: ISO M8 X 0.75		
98		REMOVE ALL SHARP EDGES		
99		SURFACE TEXTURE: 1.0/0.2		
100		SCREW THREAD: ISO M8 X 0.75		

QUALITY RELATED

TYPE A40/B

CAP SCREW



REV	ZONE	DESCRIPTION	CHK'D	DATE
P1		ISSUE FOR APPROVAL	Jdt	18122001
R1		ISSUE FOR MANUFACTURING	GP	18122001

UNLESS OTHERWISE STATED:
 REMOVE ALL SHARP EDGES
 SURFACE TEXTURE: \sqrt{Ra}
 SCREW THREAD: ISO RH 60
 GEOMETRICAL TOL.
 BS 308 1972
 WELDING SYMBOLS
 BS 499 PART 2 1990
 FIRST ISSUE
 DATE: 20/12/2001
 APPROVED: _____

MACH TOL. UNLESS OTHERWISE STATED	OTHER TOL.	UNITS	SCALE
0 - 5	0.1	mm	1:1
5 - 30	0.2		
30 - 100	0.3		
100 - 300	0.5		
300 - 1000	0.8		
1000 - 3000	1.2		
3000 PLUS	2.0		

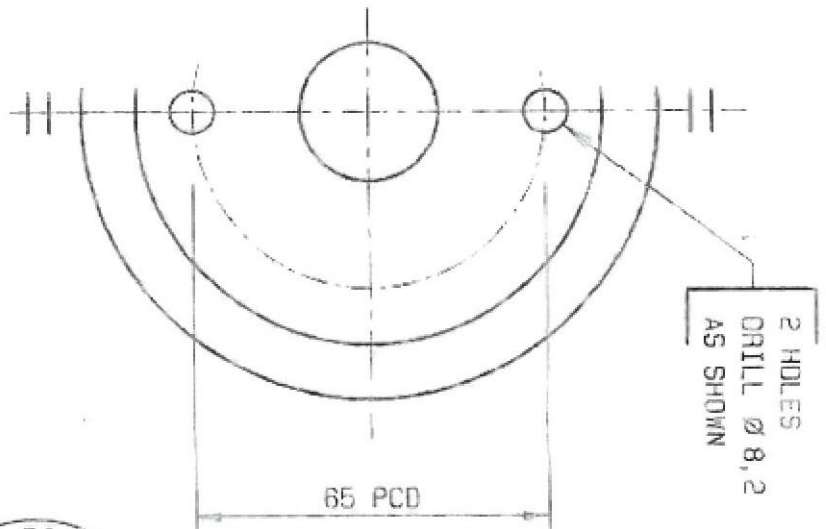
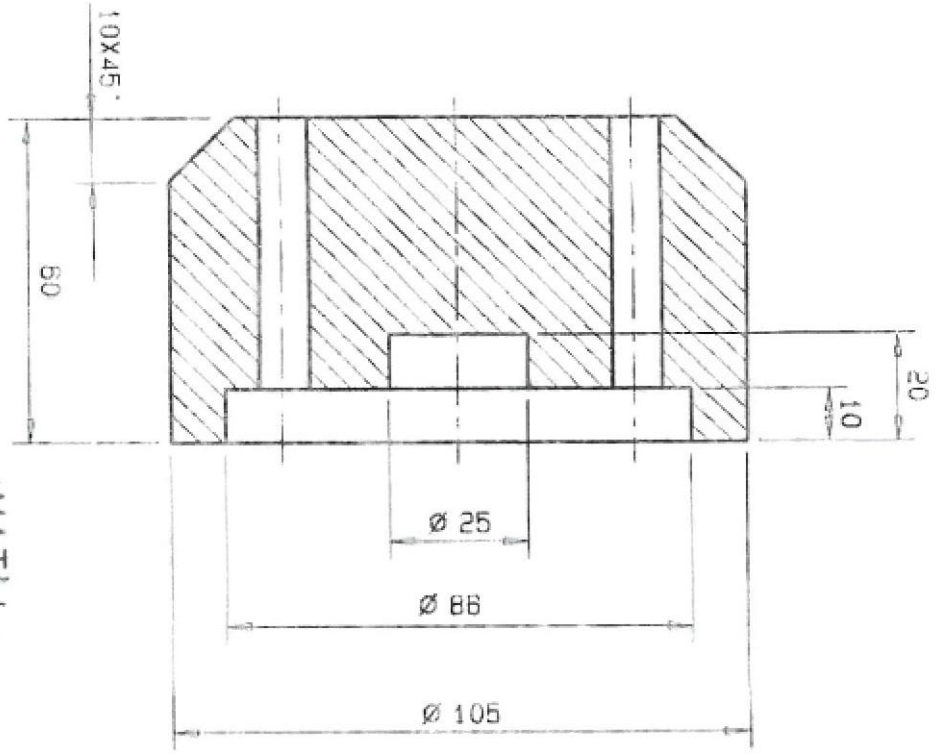
ORIGINAL SCALE 1:1
 UNITS mm
 DRAWN Jdt
 CHECKED GP
 DATE 13/12/2001

ITEM	QTY	DESCRIPTION	MATERIAL/REMARK	DRAWING NO.
		QUALITY RELATED		
		TYPE A40/B		
		TITLE		
		LID		

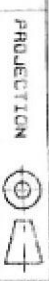
FIG. NO. H5066-00-02
 NECSA NTP

DESTROY ALL PREVIOUS PRINTS
 CADDIE
 REVISION

MAT'L: LEAD 4% ANTIMONIAL



DO NOT SCALE



IF IN DOUBT ASK

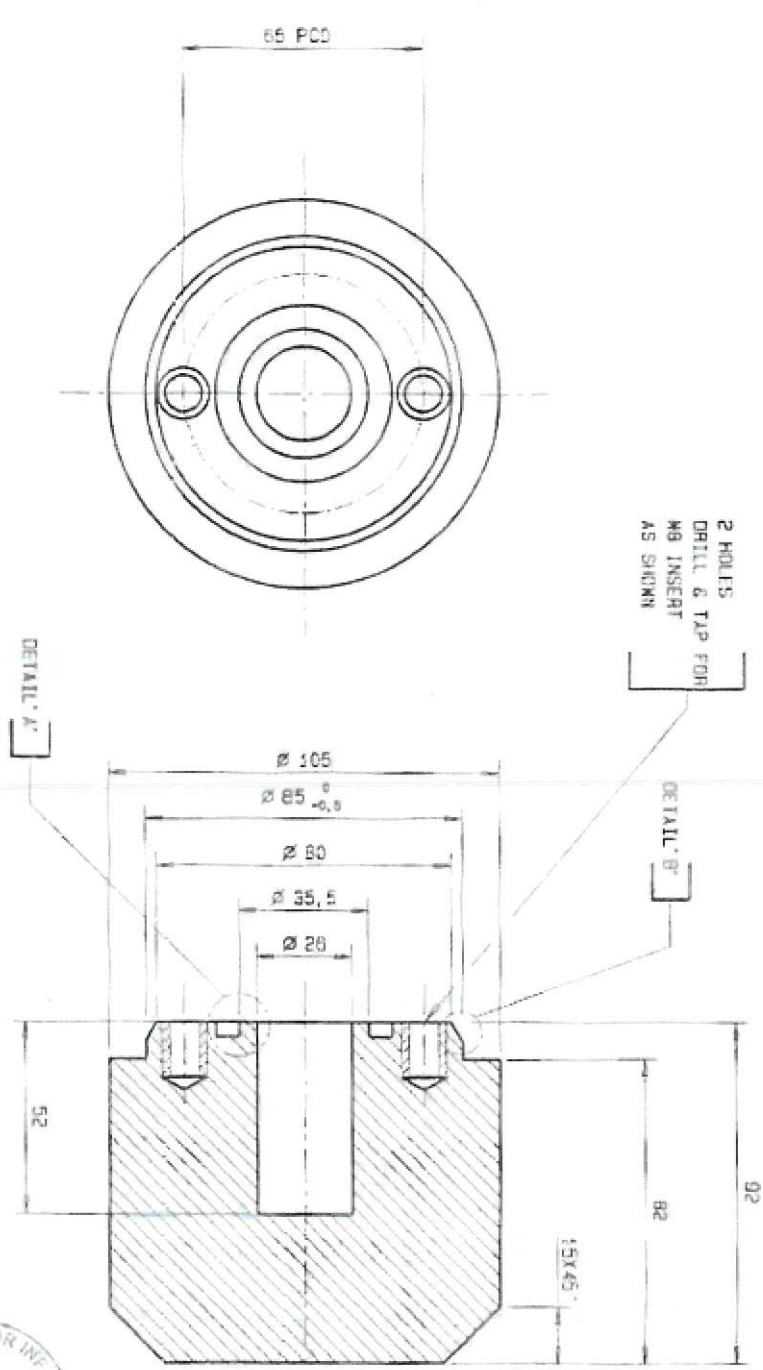
DO NOT SCALE

PROJECTION

IF IN DOUBT ASK

COPYRIGHT

THIS DRAWING IS THE PROPERTY OF NTP AND NOT BE LOANED, REPRODUCED, COPIED, REPRODUCED, OR REPRODUCED IN ANY MANNER WITHOUT THE WRITTEN PERMISSION OF NTP. ANY UNAUTHORIZED REPRODUCTION OF THIS DRAWING WILL BE CONSIDERED TO BE A VIOLATION OF FEDERAL TRADE SECRET ACT AND WILL BE PROSECUTED TO THE FULL EXTENT OF THE LAW.



DETAIL 'A'
SCALE 2:1

DETAIL 'B'
SCALE 2:1

REV	DATE	DESCRIPTION	CHK'D	DATE	UNLESS OTHERWISE STATED, DRAWING SHALL BE IN ACCORDANCE WITH THE LATEST EDITION OF THE FOLLOWING STANDARDS:	MATERIAL UNLESS OTHERWISE STATED	ORIGIN. SCALE	UNITS
1	10/12/2001	ISSUE FOR APPROVAL	JGT	10/12/2001	ASME Y14.5-2000	304 STAINLESS	1:1	MM
2	10/12/2001	ISSUE FOR MANUFACTURING	GP	10/12/2001	ASME Y14.5-2000	304 STAINLESS	1:1	MM

ITEM	QTY	DESCRIPTION	MATERIAL/FINISH	UNLESS OTHERWISE STATED
1	1	BODY	304 STAINLESS	
2	2	SCREEN INSERT	304 STAINLESS	

QUALITY RELATED
TYPE A40/B

BODY

ORG. NO. H5066-00-01

REVISIONS

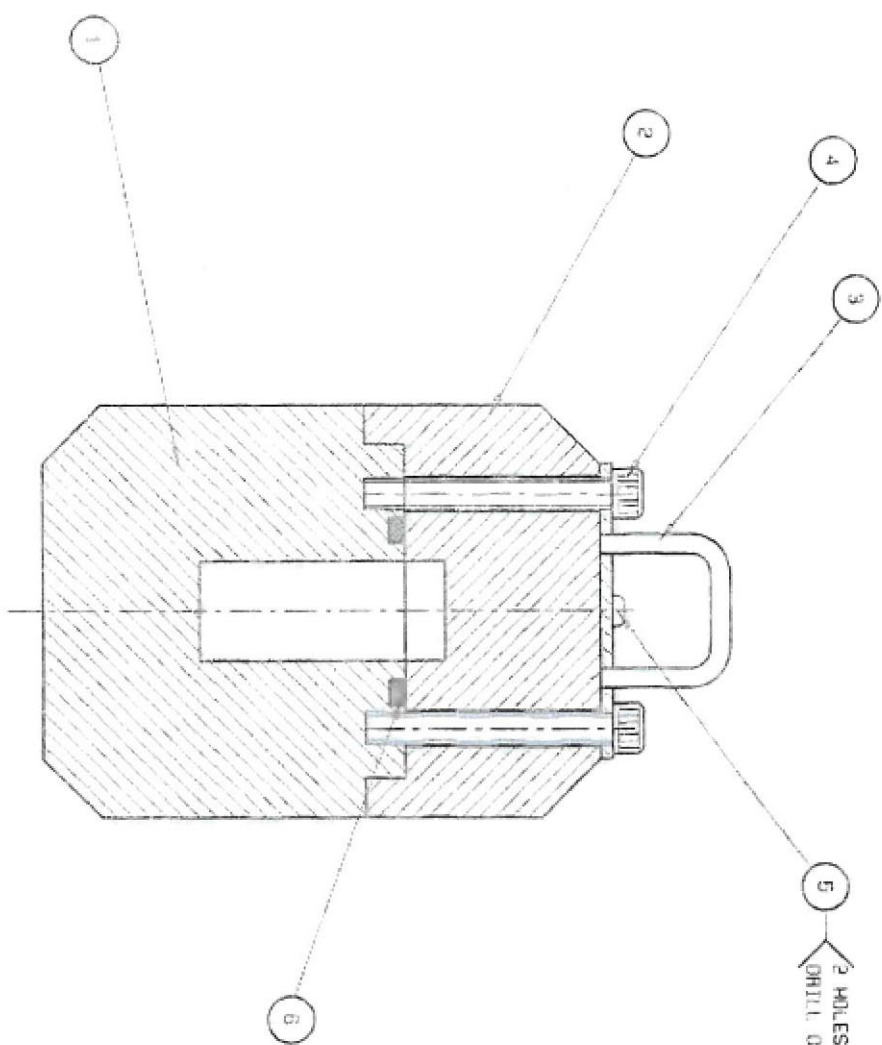
DO NOT SCALE

PROJECTION

IF IN DOUBT ASK

COPYRIGHT

THIS DRAWING IS THE PROPERTY OF NECSA AND NOT TO BE REPRODUCED OR TRANSMITTED IN ANY FORM OR BY ANY MEANS, ELECTRONIC OR MECHANICAL, INCLUDING PHOTOCOPYING, RECORDING, OR BY ANY INFORMATION STORAGE AND RETRIEVAL SYSTEM. WITHOUT THE WRITTEN PERMISSION OF NECSA, THIS DRAWING IS TO BE KEPT IN CONFIDENTIALITY AND NOT TO BE DISCLOSED TO ANY OTHER PARTY.



5 HOLES
DRILL ON ASSEMBLY



ITEM	QTY	DESCRIPTION	MATERIAL/PROCESS	QUANTITY NO.
1	1	BODY	H5066-00-01	
2	1	LID	H5066-00-02	
3	1	HANDLE	H5066-00-03	
4	2	CAP SCREW	H5066-00-04	
5	2	FAN HEAD SELF TAPPING SCREW	TYPE AB NO 10 X 20 LONG DIA 7/8" (A2)	
6	1	10 3/8 X 5 SECTION DIA NITRILE		

QUALITY RELATED

TYPE A40MM PACKAGING

TYPE A40/B



ORG. - H5066-00-00



REVISED

ZONE	DESCRIPTION	DATE	UNLESS OTHERWISE STATED, REWORK ALL DIMENSIONS TO MATCH THE ORIGINAL	MATERIAL	SCALE	APPROVED	DATE	BY
1	ISSUE FOR APPROVAL	10/20/01			3:1			
2	ISSUE FOR MANUFACTURING	10/20/01						
3	ITEM DING 10X20 LONG RAIL NO 6X88 LONG	2004/05/21						

DATE	DESCRIPTION	BY	APPROVED
10/20/01	ISSUE FOR APPROVAL		
10/20/01	ISSUE FOR MANUFACTURING		
2004/05/21	ITEM DING 10X20 LONG RAIL NO 6X88 LONG		

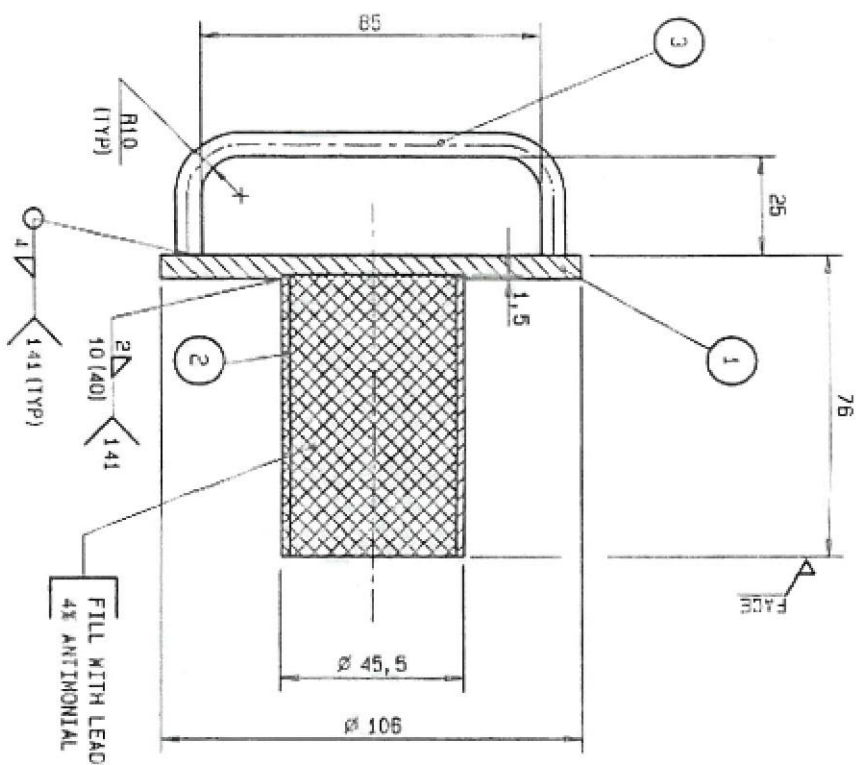
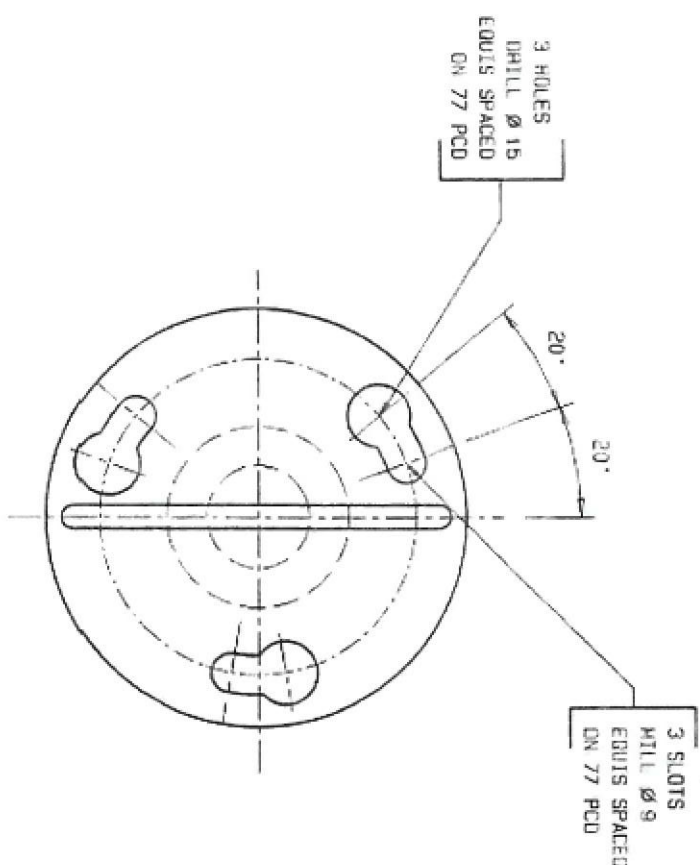
DO NOT SCALE



IF IN DOUBT ASK

COPYRIGHT

THIS DRAWING IS THE PROPERTY OF NECSA AND MAY NOT BE REPRODUCED OR TRANSMITTED IN ANY FORM OR BY ANY MEANS, ELECTRONIC OR MECHANICAL, INCLUDING PHOTOCOPYING, RECORDING, OR BY ANY INFORMATION STORAGE AND RETRIEVAL SYSTEM, WITHOUT THE WRITTEN PERMISSION OF NECSA. THIS DRAWING IS THE PROPERTY OF NECSA AND MAY NOT BE REPRODUCED OR TRANSMITTED IN ANY FORM OR BY ANY MEANS, ELECTRONIC OR MECHANICAL, INCLUDING PHOTOCOPYING, RECORDING, OR BY ANY INFORMATION STORAGE AND RETRIEVAL SYSTEM, WITHOUT THE WRITTEN PERMISSION OF NECSA.



ZONE	DESCRIPTION	CHK'D	DATE	UNLESS OTHERWISE STATED, FINISHES ALL SHARP EDGES
1	ISSUE FOR APPROVAL	JDT		
2	ISSUE FOR MANUFACTURING	GP		

ITEM	QTY	DESCRIPTION	MATERIAL/GRADE	DRAWING NO.
3	1	HANDLE	RDD Ø 6 AISI 304	
2	1	RING	PLATE 1,6 THICK AISI 304L	
1	1	PLATE	PLATE 8 THICK AISI 304L	

QUALITY RELATED

TYPE A70/A



L10

DRG. NO. H5033-00-02

REVISION



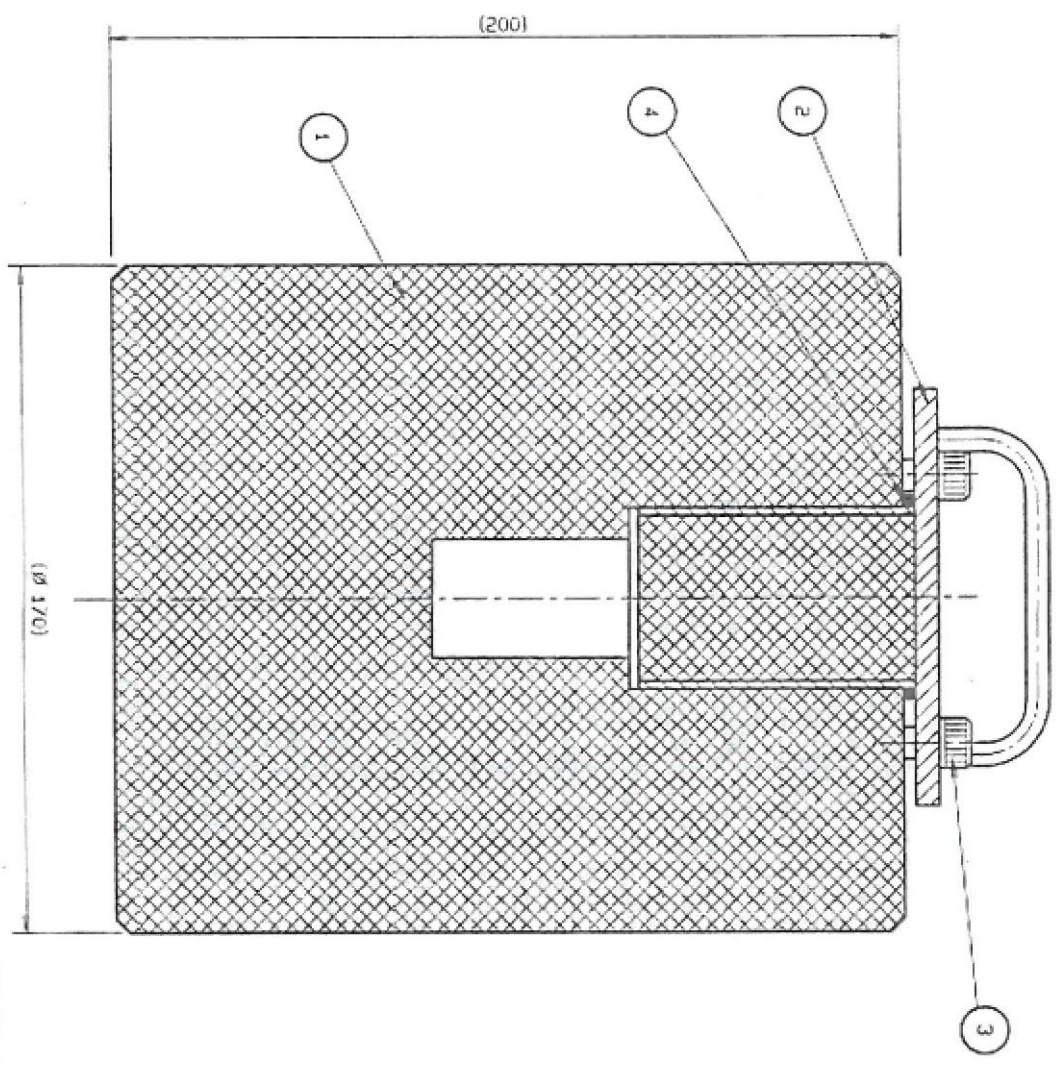
DO NOT SCALE



IF IN DOUBT ASK

COPYRIGHT

THIS DRAWING IS THE PROPERTY OF NECSA AND NOT TO BE REPRODUCED OR TRANSMITTED IN ANY FORM OR BY ANY MEANS, ELECTRONIC OR MECHANICAL, INCLUDING PHOTOCOPYING, RECORDING, OR BY ANY INFORMATION STORAGE AND RETRIEVAL SYSTEM. WITHOUT THE WRITTEN PERMISSION OF NECSA, THIS DRAWING IS NOT TO BE USED FOR ANY OTHER PROJECT.



φ 55 x 5



ZONE	DESCRIPTION	CHK'D	DATE	ISSUED
1	ISSUE FOR APPROVAL	JGT	08/03/08	08/03/08
2	ISSUE FOR MANUFACTURING	GP	08/03/08	08/03/08

UNLESS OTHERWISE STATED, REFER TO ALL DIMENSIONS TO THE CENTERLINE OF THE PART. UNLESS OTHERWISE STATED, DIMENSIONS ARE IN MILLIMETERS.

WELDING SYMBOLS: **W** WELDING SYMBOL, **W** WELDING SYMBOL, **W** WELDING SYMBOL, **W** WELDING SYMBOL.

LINE STYLES: **S** SOLID, **D** DASHED, **D** DASHED, **D** DASHED, **D** DASHED.

ITEM	QTY	DESCRIPTION	MATERIAL/REMARK	QUANTITY NO.
4	1	O-RING	Ø 40, 8710 X 3, 5 SECTION DIA NITRILE	
3	3	CAPSCREW	M 8 X 25 DIN 912 (A2)	H5033-00-02
2	1	LTD		H5033 00 01
1	1	DRIFT		

QUALITY RELATED

TYPE A70 PACKAGING

TYPE A70/A



ORG. NO. H5033-00-00

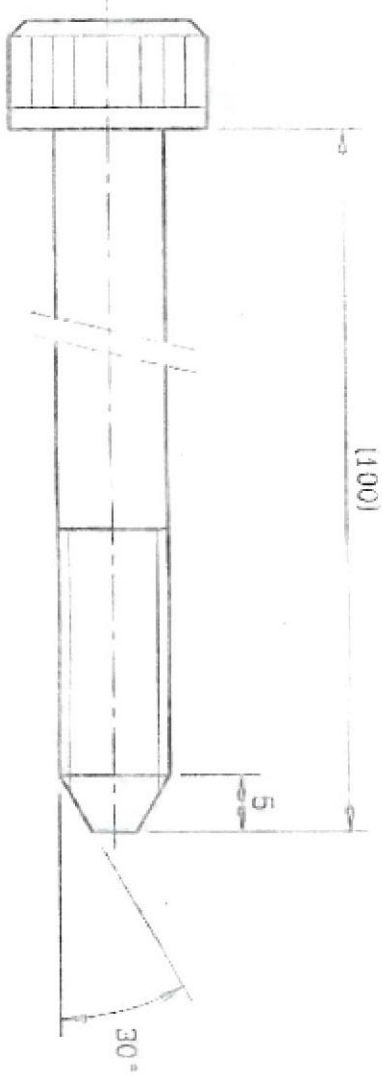


NO.	REVISION
1	
2	
3	
4	
5	
6	
7	
8	

DO NOT SCALE



IF IN DOUBT ASK



MATL: CAP SCREW M10 X 100 -DIN 912 (A2)

DATE	020500	CHK'D	GP	DESCRIPTION	ISSUE FOR APPROVAL	ZONE															
DATE	020500	CHK'D	GP	DESCRIPTION	ISSUE FOR MANUFACTURING	ZONE															
<p>UNLESS OTHERWISE STATED: REMOVE ALL SHARP EDGES SURFACE TEXTURE: 1.6 BOREN THREAD: 190 GR BR GEOMETRICAL TOL. BS 308 1972 WELDING SYMBOLS BS 499 PART 2 1980 FIRST ISSUE APPROVED: [Signature] DATE: 020500 APPROVED: [Signature] DATE: 020500</p>																					
<p>MACH TOL. UNLESS OTHERWISE STATED.</p> <table border="1"> <tr> <td>0 - 9</td> <td>9 - 30</td> <td>30 - 100</td> <td>100 - 300</td> <td>300 - 1000</td> <td>1000 - 3000</td> <td>3000 PLUS</td> </tr> <tr> <td>0.01</td> <td>0.02</td> <td>0.03</td> <td>0.04</td> <td>0.05</td> <td>0.06</td> <td>0.07</td> </tr> </table>		0 - 9	9 - 30	30 - 100	100 - 300	300 - 1000	1000 - 3000	3000 PLUS	0.01	0.02	0.03	0.04	0.05	0.06	0.07	<p>ORIGINAL SCALE 2:1</p> <p>UNITS mm</p> <p>DRAWN GJS</p> <p>CHECKED [Signature]</p>		<p>ITEM QTY DESCRIPTION MATERIAL/REMARK DRAWING NO.</p>			
0 - 9	9 - 30	30 - 100	100 - 300	300 - 1000	1000 - 3000	3000 PLUS															
0.01	0.02	0.03	0.04	0.05	0.06	0.07															
<p>QUALITY RELATED</p> <p>TYPE A60/B</p>				<p>NECSA NTP</p>																	
<p>TITLE CAP SCREW</p>				<p>DRG. NO. H5075-00-04</p>																	
<p>DESTROY ALL PREVIOUS PRINTS</p> <p>CADDIE</p> <p>REVISION</p>				<p>REVISION</p>																	

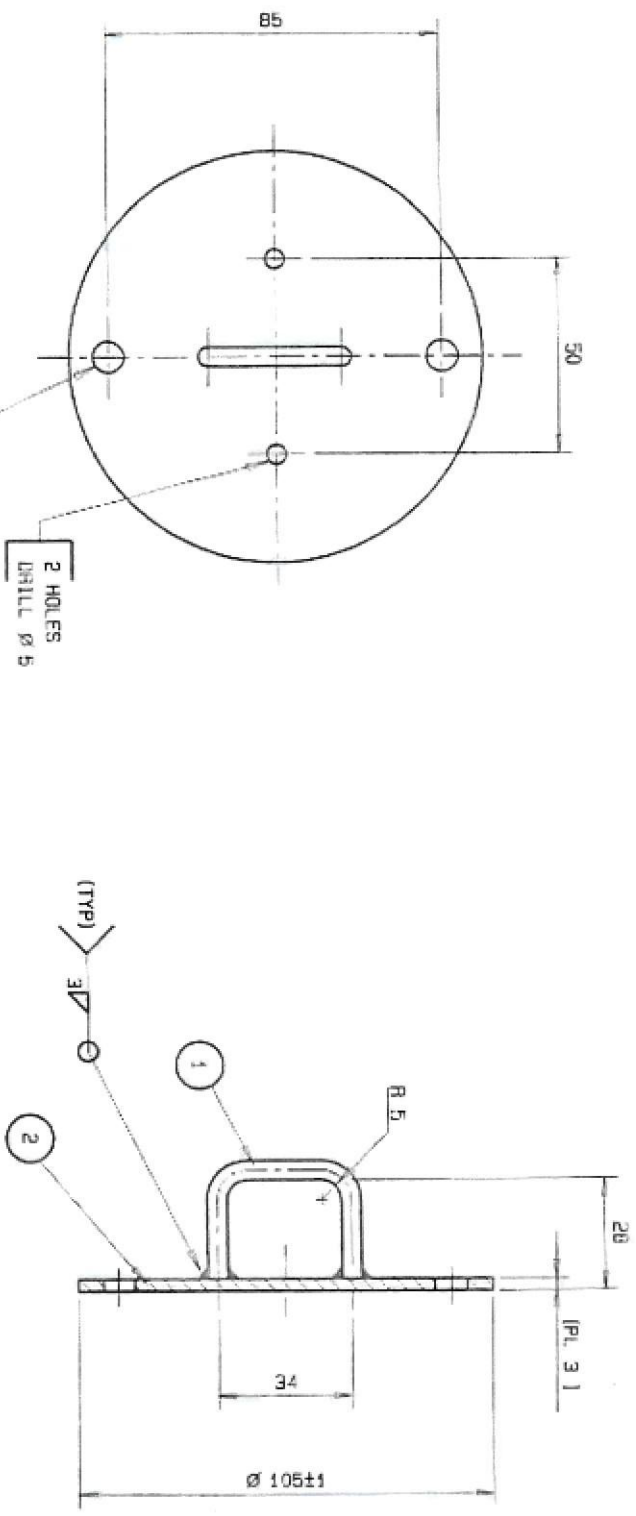
DO NOT SCALE

PRODUCTION

IF IN DOUBT ASK

COPYRIGHT

THIS DRAWING IS THE PROPERTY OF MTC
AND NOT TO BE REPRODUCED OR
TRANSMITTED IN ANY FORM OR BY ANY
MEANS, ELECTRONIC OR MECHANICAL,
INCLUDING PHOTOCOPYING, RECORDING,
OR BY ANY INFORMATION STORAGE AND
RETRIEVAL SYSTEM, WITHOUT THE
WRITTEN PERMISSION OF MTC.



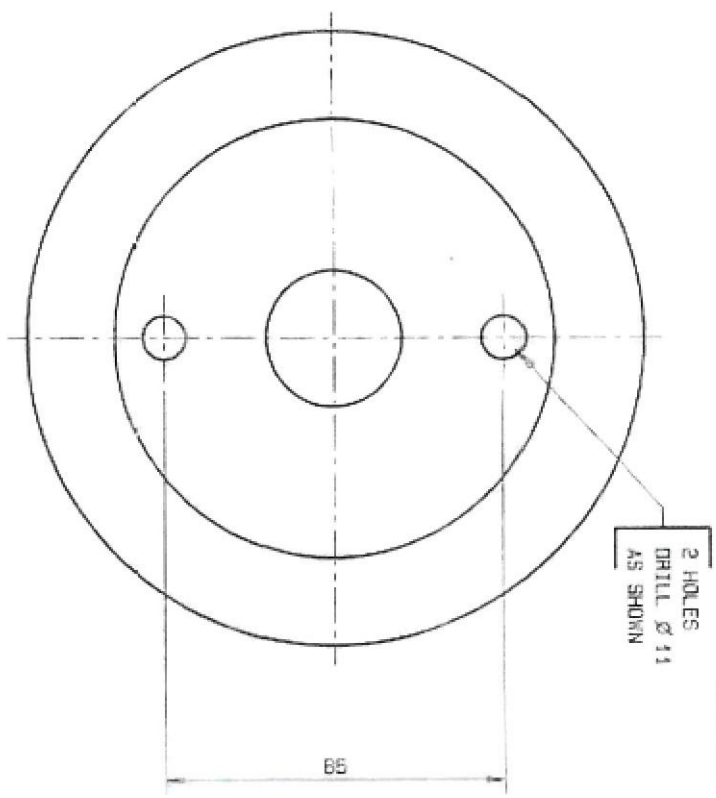
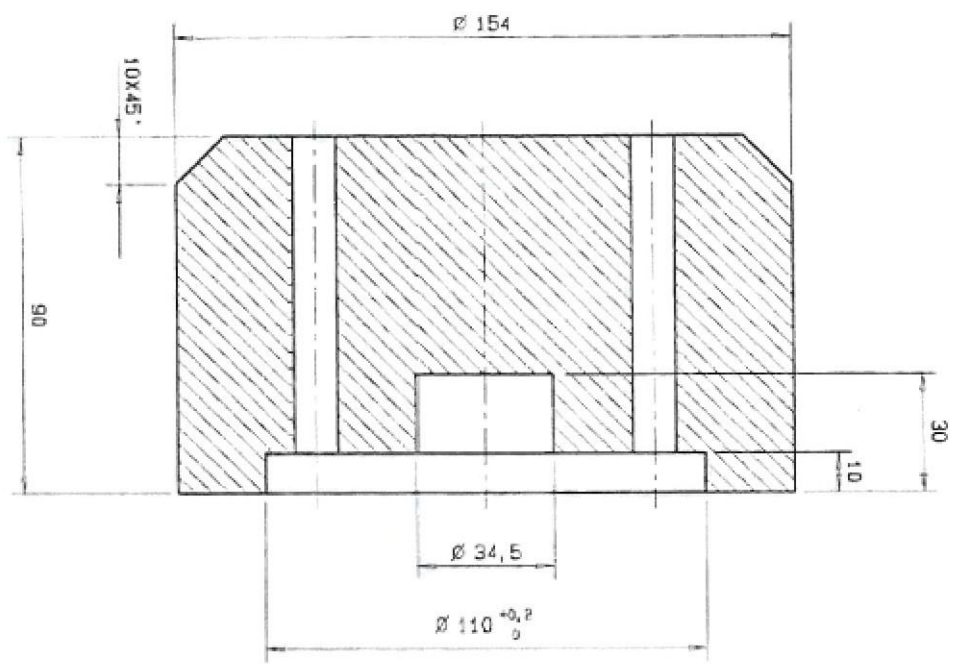
ZONE	DESCRIPTION	DATE	UNITS	ORIGINAL	SCALE	ITEM	QTY	DESCRIPTION	MATERIAL/REMARK	DRAWING NO.	
1	ISSUE FOR APPROVAL				1:1	2	1	PLATE	PLATE 3 THICK A151 304		
1	ISSUE FOR MANUFACTURING				1:1	1	1	HANDLE	ROUND BAR Ø 5 A151 304		
UNLESS OTHERWISE STATED, REMAIN ALL DIMENSIONS SURFACE FINISH: 125		MACH. TOL. DIMENSIONS		SCALE		ITEM		DESCRIPTION		DRAWING NO.	
SURFACE FINISH: 125 OR 63		DIMENSIONS STATED		1:1		2		PLATE 3 THICK A151 304			
REWORK: 125 OR 63		TOL.		1:1		1		ROUND BAR Ø 5 A151 304			
63 AND THAT 2 125		0 - 0.25		0.25, 0.5, 1, 2, 3, 4, 6, 10, 15, 20, 30, 40, 50, 63, 80, 100, 125, 160, 200, 250, 315, 400, 500, 630, 800, 1000		1		MATERIAL/REMARK			
FITTED TABLE		0.25		0.5, 1, 2, 3, 4, 6, 10, 15, 20, 30, 40, 50, 63, 80, 100, 125, 160, 200, 250, 315, 400, 500, 630, 800, 1000		1		DRAWING NO.			
APPROVED		DRAWN		GJG		1		DRAWING NO.			
APPROVED		CHECKED		GP		1		DRAWING NO.			
APPROVED		DRAWN		GJG		1		DRAWING NO.			
APPROVED		CHECKED		GP		1		DRAWING NO.			
APPROVED		DRAWN		GJG		1		DRAWING NO.			
APPROVED		CHECKED		GP		1		DRAWING NO.			
APPROVED		DRAWN		GJG		1		DRAWING NO.			
APPROVED		CHECKED		GP		1		DRAWING NO.			
APPROVED		DRAWN		GJG		1		DRAWING NO.			
APPROVED		CHECKED		GP		1		DRAWING NO.			
APPROVED		DRAWN		GJG		1		DRAWING NO.			
APPROVED		CHECKED		GP		1		DRAWING NO.			
APPROVED		DRAWN		GJG		1		DRAWING NO.			
APPROVED		CHECKED		GP		1		DRAWING NO.			
APPROVED		DRAWN		GJG		1		DRAWING NO.			
APPROVED		CHECKED		GP		1		DRAWING NO.			
APPROVED		DRAWN		GJG		1		DRAWING NO.			
APPROVED		CHECKED		GP		1		DRAWING NO.			
APPROVED		DRAWN		GJG		1		DRAWING NO.			
APPROVED		CHECKED		GP		1		DRAWING NO.			
APPROVED		DRAWN		GJG		1		DRAWING NO.			
APPROVED		CHECKED		GP		1		DRAWING NO.			
APPROVED		DRAWN		GJG		1		DRAWING NO.			
APPROVED		CHECKED		GP		1		DRAWING NO.			
APPROVED		DRAWN		GJG		1		DRAWING NO.			
APPROVED		CHECKED		GP		1		DRAWING NO.			
APPROVED		DRAWN		GJG		1		DRAWING NO.			
APPROVED		CHECKED		GP		1		DRAWING NO.			
APPROVED		DRAWN		GJG		1		DRAWING NO.			
APPROVED		CHECKED		GP		1		DRAWING NO.			
APPROVED		DRAWN		GJG		1		DRAWING NO.			
APPROVED		CHECKED		GP		1		DRAWING NO.			
APPROVED		DRAWN		GJG		1		DRAWING NO.			
APPROVED		CHECKED		GP		1		DRAWING NO.			
APPROVED		DRAWN		GJG		1		DRAWING NO.			
APPROVED		CHECKED		GP		1		DRAWING NO.			
APPROVED		DRAWN		GJG		1		DRAWING NO.			
APPROVED		CHECKED		GP		1		DRAWING NO.			
APPROVED		DRAWN		GJG		1		DRAWING NO.			
APPROVED		CHECKED		GP		1		DRAWING NO.			
APPROVED		DRAWN		GJG		1		DRAWING NO.			
APPROVED		CHECKED		GP		1		DRAWING NO.			
APPROVED		DRAWN		GJG		1		DRAWING NO.			
APPROVED		CHECKED		GP		1		DRAWING NO.			
APPROVED		DRAWN		GJG		1		DRAWING NO.			
APPROVED		CHECKED		GP		1		DRAWING NO.			
APPROVED		DRAWN		GJG		1		DRAWING NO.			
APPROVED		CHECKED		GP		1		DRAWING NO.			
APPROVED		DRAWN		GJG		1		DRAWING NO.			
APPROVED		CHECKED		GP		1		DRAWING NO.			
APPROVED		DRAWN		GJG		1		DRAWING NO.			
APPROVED		CHECKED		GP		1		DRAWING NO.			
APPROVED		DRAWN		GJG		1		DRAWING NO.			
APPROVED		CHECKED		GP		1		DRAWING NO.			
APPROVED		DRAWN		GJG		1		DRAWING NO.			
APPROVED		CHECKED		GP		1		DRAWING NO.			
APPROVED		DRAWN		GJG		1		DRAWING NO.			
APPROVED		CHECKED		GP		1		DRAWING NO.			
APPROVED		DRAWN		GJG		1		DRAWING NO.			
APPROVED		CHECKED		GP		1		DRAWING NO.			
APPROVED		DRAWN		GJG		1		DRAWING NO.			
APPROVED		CHECKED		GP		1		DRAWING NO.			
APPROVED		DRAWN		GJG		1		DRAWING NO.			
APPROVED		CHECKED		GP		1		DRAWING NO.			
APPROVED		DRAWN		GJG		1		DRAWING NO.			
APPROVED		CHECKED		GP		1		DRAWING NO.			
APPROVED		DRAWN		GJG		1		DRAWING NO.			
APPROVED		CHECKED		GP		1		DRAWING NO.			
APPROVED		DRAWN		GJG		1		DRAWING NO.			
APPROVED		CHECKED		GP		1		DRAWING NO.			
APPROVED		DRAWN		GJG		1		DRAWING NO.			
APPROVED		CHECKED		GP		1		DRAWING NO.			
APPROVED		DRAWN		GJG		1		DRAWING NO.			
APPROVED		CHECKED		GP		1		DRAWING NO.			
APPROVED		DRAWN		GJG		1		DRAWING NO.			
APPROVED		CHECKED		GP		1		DRAWING NO.			
APPROVED		DRAWN		GJG		1		DRAWING NO.			
APPROVED		CHECKED		GP		1		DRAWING NO.			
APPROVED		DRAWN		GJG		1		DRAWING NO.			
APPROVED		CHECKED		GP		1		DRAWING NO.			
APPROVED		DRAWN		GJG		1		DRAWING NO.			
APPROVED		CHECKED		GP		1		DRAWING NO.			
APPROVED		DRAWN		GJG		1		DRAWING NO.			
APPROVED		CHECKED		GP		1		DRAWING NO.			
APPROVED		DRAWN		GJG		1		DRAWING NO.			
APPROVED		CHECKED		GP		1		DRAWING NO.			
APPROVED		DRAWN		GJG		1		DRAWING NO.			
APPROVED		CHECKED		GP		1		DRAWING NO.			
APPROVED		DRAWN		GJG		1		DRAWING NO.			
APPROVED		CHECKED		GP		1		DRAWING NO.			
APPROVED		DRAWN		GJG		1		DRAWING NO.			
APPROVED		CHECKED		GP		1		DRAWING NO.			
APPROVED		DRAWN		GJG		1		DRAWING NO.			
APPROVED		CHECKED		GP		1		DRAWING NO.			
APPROVED		DRAWN		GJG		1		DRAWING NO.			
APPROVED		CHECKED		GP		1		DRAWING NO.			
APPROVED		DRAWN		GJG		1		DRAWING NO.			
APPROVED		CHECKED		GP		1		DRAWING NO.			
APPROVED		DRAWN		GJG		1		DRAWING NO.			
APPROVED		CHECKED		GP		1		DRAWING NO.			
APPROVED		DRAWN		GJG		1		DRAWING NO.			
APPROVED		CHECKED		GP		1		DRAWING NO.			
APPROVED		DRAWN		GJG		1		DRAWING NO.			
APPROVED		CHECKED		GP		1		DRAWING NO.			
APPROVED		DRAWN		GJG		1		DRAWING NO.			
APPROVED		CHECKED		GP		1		DRAWING NO.			
APPROVED		DRAWN		GJG		1		DRAWING NO.			
APPROVED		CHECKED		GP		1		DRAWING NO.			
APPROVED		DRAWN		GJG		1		DRAWING NO.			
APPROVED		CHECKED		GP		1		DRAWING NO.			
APPROVED		DRAWN		GJG		1		DRAWING NO.			
APPROVED		CHECKED		GP		1		DRAWING NO.			
APPROVED		DRAWN		GJG		1		DRAWING NO.			
APPROVED		CHECKED		GP		1		DRAWING NO.			
APPROVED		DRAWN		GJG		1		DRAWING NO.			
APPROVED		CHECKED		GP		1		DRAWING NO.			
APPROVED		DRAWN		GJG		1		DRAWING NO.			
APPROVED		CHECKED		GP		1		DRAWING NO.			
APPROVED		DRAWN		GJG		1		DRAWING NO.			
APPROVED		CHECKED		GP		1		DRAWING NO.			
APPROVED		DRAWN		GJG		1		DRAWING NO.			
APPROVED		CHECKED		GP		1		DRAWING NO.			
APPROVED		DRAWN		GJG		1		DRAWING NO.			
APPROVED		CHECKED		GP		1		DRAWING NO.			
APPROVED		DRAWN		GJG		1		DRAWING NO.			
APPROVED		CHECKED		GP		1		DRAWING NO.			
APPROVED		DRAWN		GJG		1		DRAWING NO.			
APPROVED		CHECKED		GP		1		DRAWING NO.			
APPROVED		DRAWN		GJG		1		DRAWING NO.			
APPROVED		CHECKED		GP		1		DRAWING NO.			
APPROVED		DRAWN		GJG		1		DRAWING NO.			
APPROVED		CHECKED		GP		1		DRAWING NO.			
APPROVED		DRAWN		GJG		1		DRAWING NO.			
APPROVED		CHECKED		GP		1		DRAWING NO.			
APPROVED		DRAWN		GJG		1		DRAWING NO.			
APPROVED		CHECKED		GP		1		DRAWING NO.			
APPROVED		DRAWN		GJG		1		DRAWING NO.			
APPROVED		CHECKED		GP		1		DRAWING NO.			
APPROVED		DRAWN		GJG		1		DRAWING NO.			
APPROVED		CHECKED		GP		1		DRAWING NO.			
APPROVED		DRAWN		GJG		1		DRAWING NO.			
APPROVED		CHECKED		GP		1		DRAWING NO.			
APPROVED		DRAWN		GJG		1		DRAWING NO.			
APPROVED		CHECKED		GP		1		DRAWING NO.			
APPROVED		DRAWN		GJG		1		DRAWING NO.			
APPROVED		CHECKED		GP		1		DRAWING NO.			
APPROVED		DRAWN		GJG		1		DRAWING NO.			
APPROVED		CHECKED		GP		1		DRAWING NO.			
APPROVED		DRAWN		GJG		1		DRAWING NO.			
APPROVED		CHECKED		GP		1		DRAWING NO.			
APPROVED		DRAWN		GJG		1		DRAWING NO.			
APPROVED		CHECKED		GP		1		DRAWING NO.			
APPROVED		DRAWN		GJG		1		DRAWING NO.			

DO NOT SCALE



IF IN DOUBT ASK

COPYRIGHT



NOT DRAWN TO THE REQUIREMENTS OF NECSA AND MAY NOT BE USED FOR THE PRODUCTION OF ANYTHING WITHOUT THE WRITTEN AUTHORITY OF NECSA OR DRCS. ON COMPLETION OF A THIRD PARTY OR A OTHER PARTY IN THE FIELD FOR ANY REASON OTHER THAN THAT FOR WHICH IT IS ISSUED.

MATL: - LEAD 4% ANTIMONIAL

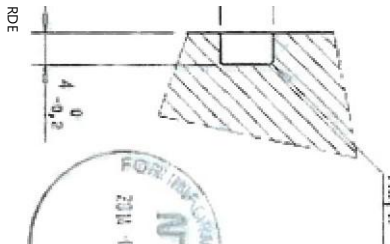


ZONE	ISSUE # OR APPROVAL	DESCRIPTION	DRW'D	DATE	USER OR ENGINEER STATED: REVISION ALL OTHER TEAMS	MACH TO.. UNLESS OTHERWISE STATED	ORIGINAL SCALE	ITEM QTY	DESCRIPTION	MATERIAL/REMARK	DRAWING NO.
	ISSUE FOR MANUFACTURING		UP	02/05/08	USER OR ENGINEER STATED: REVISION ALL OTHER TEAMS REWORK TEXTURE: 1.4 SCHEM: 1000-1500 BY 10 BE 3000 10/2 GEOMETRICAL TOL. MOLDING DIMENSIONS 85 488 PART 2 1000 FIRST ISSUE CHECKED: [Signature] APPROVED: [Signature] APPROVED: [Signature]	0 - 0 20 - 20 100 - 100 200 - 100 500 - 100 1000 - 100 5000 - 100 MILLIS	1:1	1	QUALITY RELATED TYPE A60/B	NECSA NIP	DESIGN PREVIEW PRINT
						10.1 10.2 10.3 10.4 10.5 10.6 10.7 10.8 10.9 11.0					DRG. NO. H5075-00-02
						11.1					REVISI

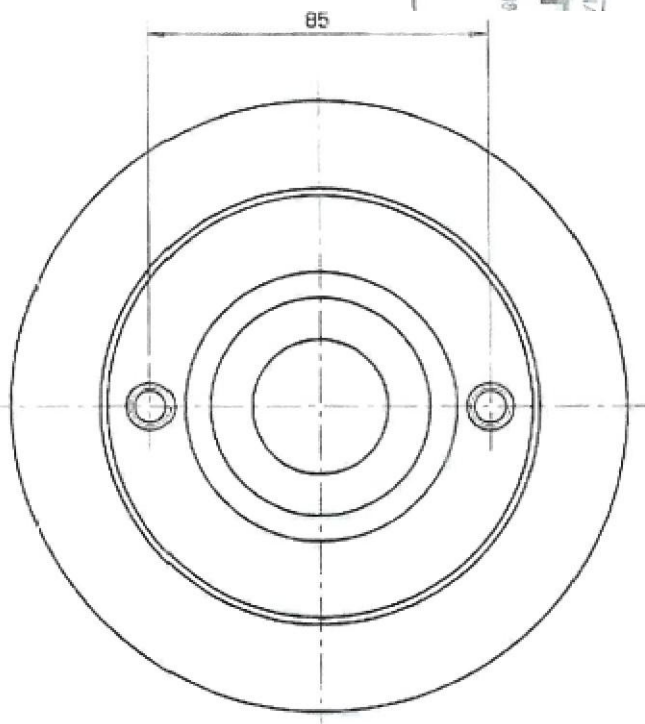
17/03/2014

THIS DRAWING IS THE PROPERTY OF BENTON AND BOWNE WOODBURN AND PARTNERS. IT IS TO BE KEPT IN CONFIDENCE AND NOT REPRODUCED OR TRANSMITTED IN ANY FORM OR BY ANY MEANS, ELECTRONIC OR MECHANICAL, INCLUDING PHOTOCOPYING, RECORDING, OR BY ANY INFORMATION STORAGE AND RETRIEVAL SYSTEM. ANY UNAUTHORIZED USE OF THIS DRAWING IS STRICTLY PROHIBITED. ALL RIGHTS ARE RESERVED.

DRILL &
M10X20
AS SHOWN



FOR INFORMATION
NT
2014-03



17/03/2014

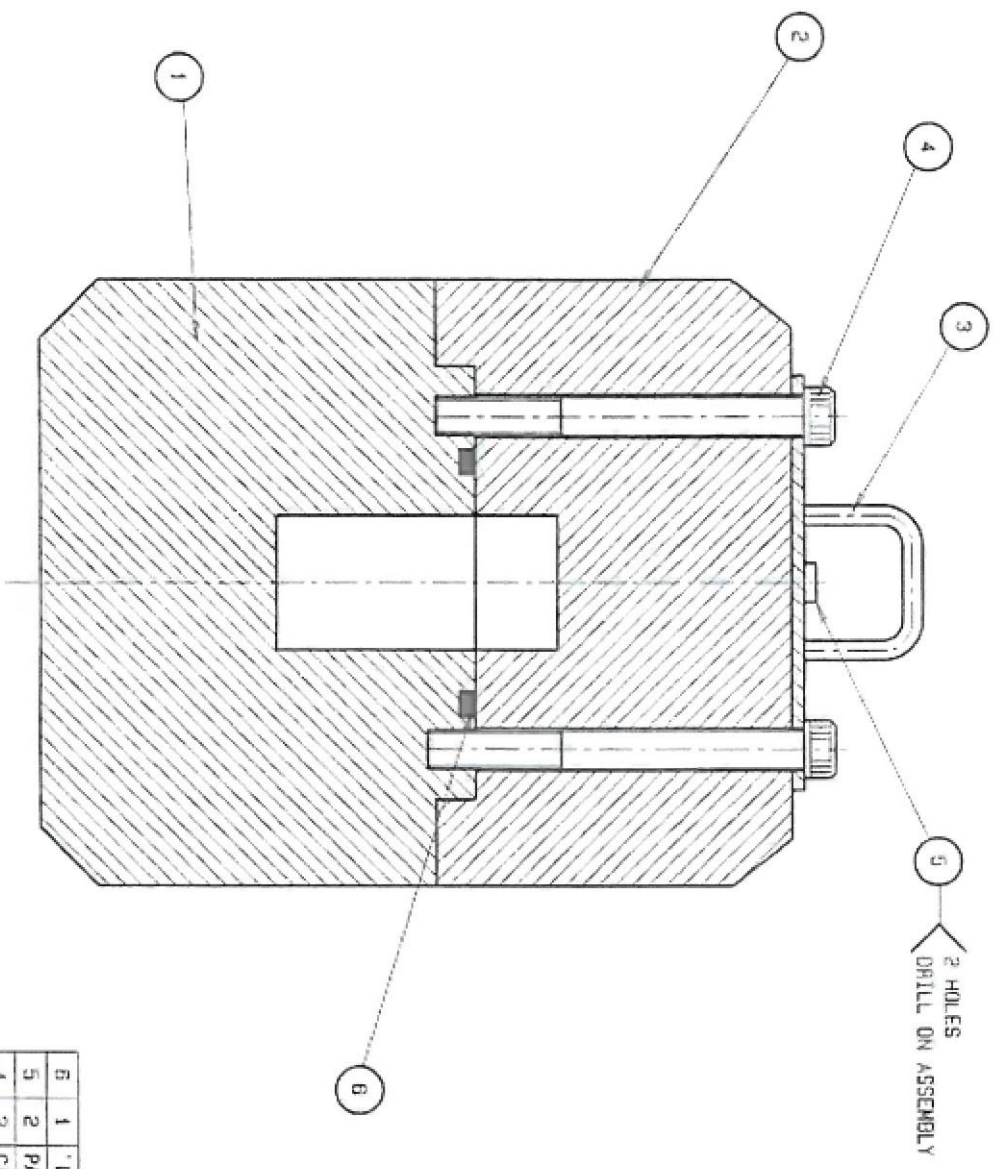
DD NOT SCALE

PROJECTION

IF IN DOUBT ASK

COPYRIGHT

THIS DRAWING IS THE PROPERTY OF NTP
AND MAY NOT BE REPRODUCED OR
TRANSMITTED IN ANY FORM OR BY ANY
MEANS, ELECTRONIC OR MECHANICAL,
INCLUDING PHOTOCOPYING, RECORDING,
OR BY ANY INFORMATION STORAGE AND
RETRIEVAL SYSTEM, WITHOUT THE
WRITTEN PERMISSION OF NTP.



ITEM	QTY	DESCRIPTION	MATERIAL/REMARK	DRAWING NO.
6	1	'D' RINGS	10 5/8 x 5 SECTION DIA NITRILE	
5	2	PANHEAD SELF TAPPING SCREW	TYPE A8 NO 8 x 68 LONG DIN 7974 (A2)	
4	2	CAP SCREW	H5075-00-04	
3	1	HANDLE	H5075-00-03	
2	1	LTD	H5075-00-02	
1	1	ENDY	H5075-00-01	

ZONE	DESCRIPTION	CHK'D BY	DATE
1	ISSUE FOR APPROVAL	GP	020208
2	ISSUE FOR MANUFACTURING	GP	020208

UNLESS OTHERWISE STATED
SPEC ALL SURF FINISHES
SURFACE TEXTURE: \sqrt{Ra}
SCREW THREAD: 150 BT 9
NO SOL TAPP
GRINDING TO
RE 400 PAPER
WELDING SYMBOLS
98 400 PART 2 1990
FIRST ISSUE

MACH TOL. UNLESS	DIMENSIONAL TOL.	DATE	BY
0 - .5	0 - .1	020208	GP
.5 - 1.0	.1 - .2	020208	GP
1.0 - 2.0	.2 - .4	020208	GP
2.0 - 5.0	.4 - .8	020208	GP
5.0 - 10.0	.8 - 1.6	020208	GP
10.0 - 30.0	1.6 - 3.2	020208	GP
30.0 - 100.0	3.2 - 6.4	020208	GP
100.0 - 300.0	6.4 - 12.8	020208	GP
300.0 - 1000.0	12.8 - 25.6	020208	GP
1000.0 - 3000.0	25.6 - 51.2	020208	GP
3000.0 - 10000.0	51.2 - 102.4	020208	GP

QUALITY RELATED
TYPE A60mm PACKAGING

TYPE A60/B

DRG. NO. H5075-00-00



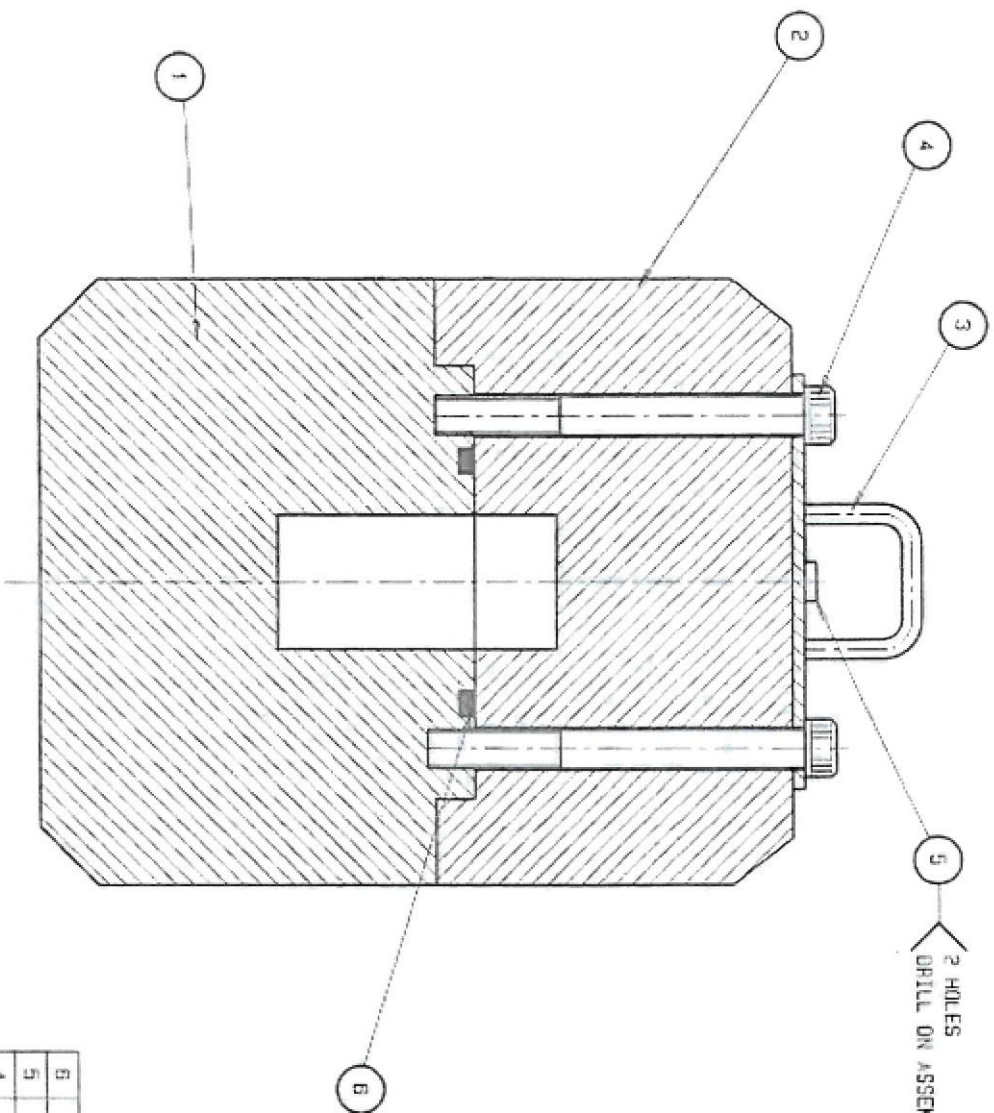
DO NOT SCALE

PROJECTION

IF IN DOUBT ASK

COPYRIGHT

THIS DRAWING IS THE PROPERTY OF AETNA AND MAY NOT BE REPRODUCED OR TRANSMITTED IN ANY FORM OR BY ANY MEANS, ELECTRONIC OR MECHANICAL, INCLUDING PHOTOCOPYING, RECORDING, OR BY ANY INFORMATION STORAGE AND RETRIEVAL SYSTEM, WITHOUT THE WRITTEN PERMISSION OF AETNA.



ITEM	QTY	DESCRIPTION	MATERIAL/SPEC	QUANTITY
1	1	BODY	H5075-00-01	
2	1	LID	H5075-00-02	
3	1	HANDLE	H5075-00-03	
4	2	CAP SCREW	H5075-00-04	
5	2	PANHEAD SELF TAPPING SCREW	TYPE A8 NO 8 x 88 LONG TIN 7974 (A2)	
6	1	O' RING	10 55 x 5 SECTION DIA NITRILE	

UNIT	SCALE	DATE	BY
GRAM	1:1	08/28/14	GP

UNIT	SCALE	DATE	BY
GRAM	1:1	08/28/14	GP

UNIT	SCALE	DATE	BY
GRAM	1:1	08/28/14	GP

DATE	DESCRIPTION	CHK'D	DATE
	ISSUE FOR APPROVAL	GP	08/28/14
	ISSUE FOR MANUFACTURING	GP	08/28/14

DATE	DESCRIPTION	CHK'D	DATE
	ISSUE FOR APPROVAL	GP	08/28/14
	ISSUE FOR MANUFACTURING	GP	08/28/14

DATE	DESCRIPTION	CHK'D	DATE
	ISSUE FOR APPROVAL	GP	08/28/14
	ISSUE FOR MANUFACTURING	GP	08/28/14

DATE	DESCRIPTION	CHK'D	DATE
	ISSUE FOR APPROVAL	GP	08/28/14
	ISSUE FOR MANUFACTURING	GP	08/28/14

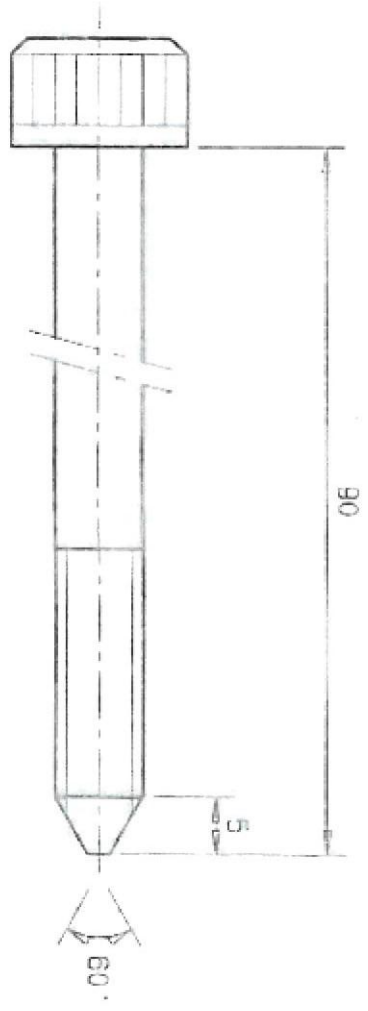


REV	ZONE	DESCRIPTION	CHK'D	DATE
P1		ISSUE FOR APPROVAL	JDT	18/12/2001
P2		ISSUE FOR MANUFACTURING	BP	18/12/2001

DO NOT SCALE



IF IN DOUBT ASK



MATL: CAP SCREW M8 X 90 - DIN 912 (A2)



UNLESS OTHERWISE STATED: REMOVE ALL SHARP EDGES SURFACE TEXTURE: 1.6 SCREW THREAD: ISO M8 M8 M8 GEOMETRICAL TOL. BS 308 1972		MACH TOL. UNLESS OTHERWISE STATED		ORIGINAL SCALE 2:1		ITEM QTY		DESCRIPTION		MATERIAL/REMARK		DRAWING NO.	
MELDING SYMBOLS BS 499 PART 2 1980		OTHERWISE STATED		UNITS mm		DRAWN		QUALITY RELATED		NECSA NTP		DESTROY ALL PREVIOUS PRINTS	
FIRST ISSUE		OVER - 75 10L		CHECKED		JDT		TYPE A50/B		DRG. NO H5067-00-04		CADDIE REVISION	
APPROVED: [Signature] DATE: 20/12/2001		0 - 0 10L,1		18/12/2001		6P		CAP SCREW					
100 - 100 10L,2		5 - 30 10L,2											
300 - 1000 10L,3		100 - 100 10L,3											
1000 - 1000 10L,4		300 - 1000 10L,4											
10000 - 10000 12L,0		10000 - 10000 12L,0											
ANGLES		11											

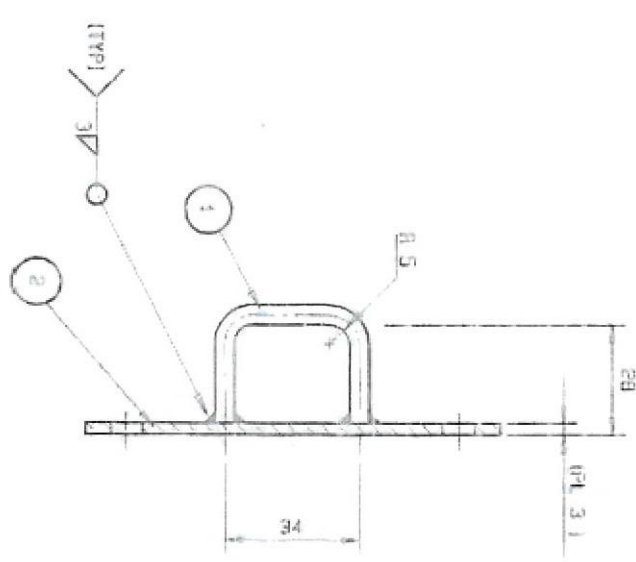
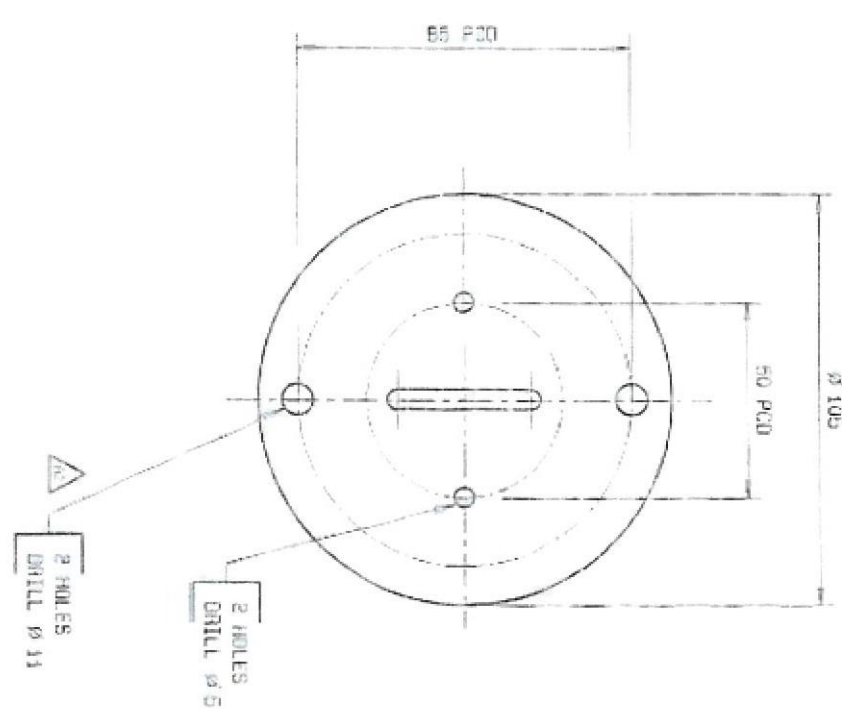
DO NOT SCALE



IF IN DOUBT ASK

EXPERIMENT

THIS DRAWING IS THE PROPERTY OF NIP
 AND NOT BE LOANED, REPRODUCED,
 COPIED, OR IN ANY MANNER
 DISSEMINATED TO A THIRD PARTY IN USE
 WITHOUT WRITTEN PERMISSION FROM NIP.
 THIS DRAWING IS THE PROPERTY OF NIP.



ZONE	ISSUE FOR APPROVAL	DESCRIPTION	CHK'D	DATE	UNLESS OTHERWISE STATED FOR ALL DIMENSIONS USE THE FOLLOWING UNITS	MADE TO ORDER DIMENSIONS	UNITS	DRWING	DATE	DP	TITLE	DWG. NO.	REVISION
1	ISSUE FOR MANUFACTURING		DP	2006/01/06	UNLESS OTHERWISE STATED FOR ALL DIMENSIONS USE THE FOLLOWING UNITS	MADE TO ORDER DIMENSIONS	MM	DRWING		DP	QUALITY RELATED TYPE A50/B	H5067-00-03	
2	HOLE NOTE: Ø 11 WAS Ø 8.2		DP	2004/08/20	UNLESS OTHERWISE STATED FOR ALL DIMENSIONS USE THE FOLLOWING UNITS	MADE TO ORDER DIMENSIONS	MM	DRWING		DP	HANDLE	H5067-00-03	

ITEM	QTY	DESCRIPTION	MATERIAL/REMARK	QUANTITY NO.
2	1	PLATE	PLATE 3 THICK AISI 304	
1	1	HANDLE	ROUND BAR Ø 5 AISI 304	

DATE	BY	DESCRIPTION
2006/01/06	DP	ISSUE FOR MANUFACTURING
2004/08/20	DP	HOLE NOTE: Ø 11 WAS Ø 8.2

DATE	BY	DESCRIPTION
2006/01/06	DP	ISSUE FOR MANUFACTURING
2004/08/20	DP	HOLE NOTE: Ø 11 WAS Ø 8.2

DATE	BY	DESCRIPTION
2006/01/06	DP	ISSUE FOR MANUFACTURING
2004/08/20	DP	HOLE NOTE: Ø 11 WAS Ø 8.2



00 NOT SCALE

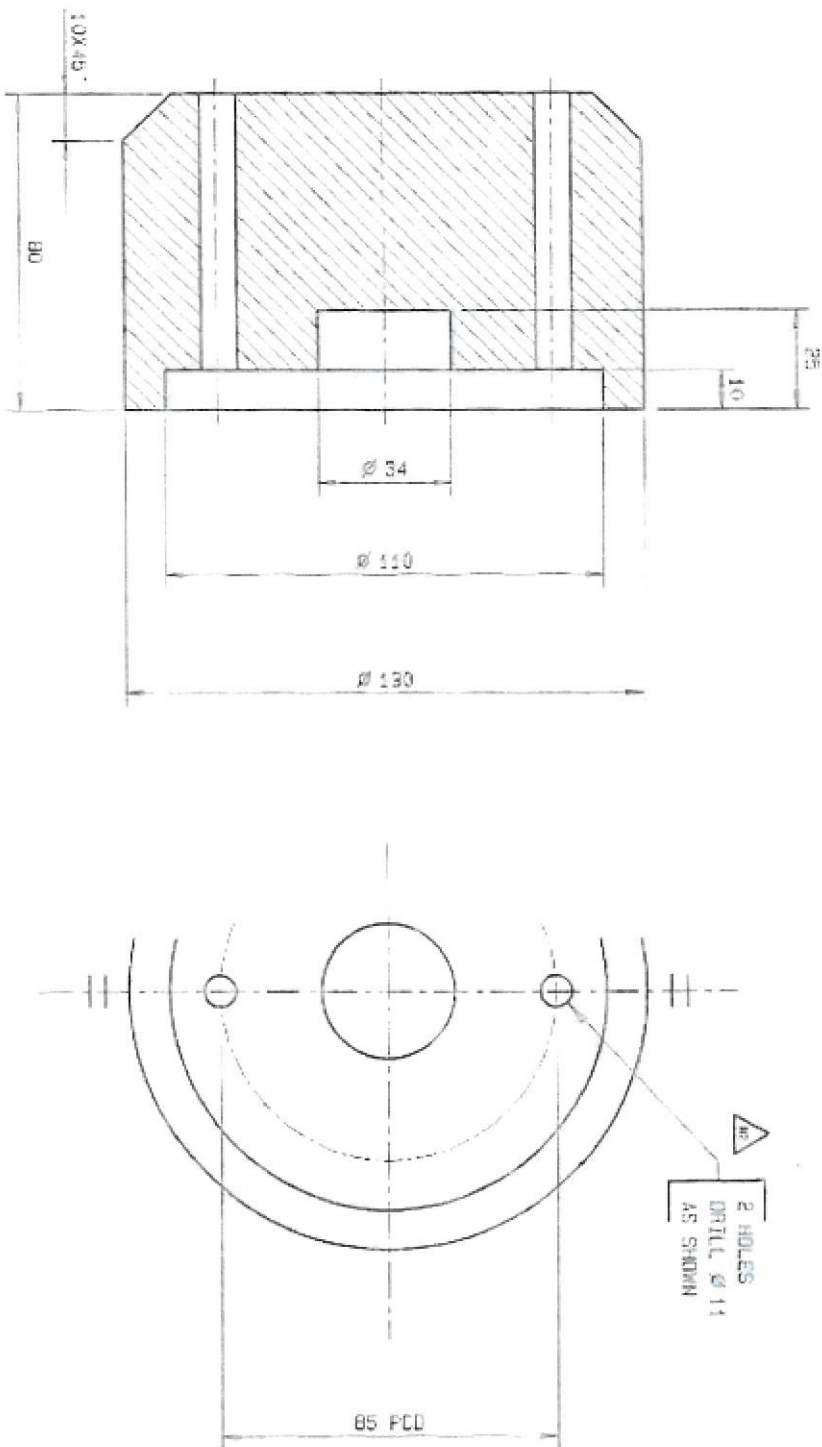
PROJECTION



IF IN DOUBT ASK

COPYRIGHT

NOTE: DRAWING IS THE PROPERTY OF NECSA. ALL RIGHTS RESERVED. THE DESIGN, CONSTRUCTION AND USE OF THIS DRAWING IS LIMITED TO THE PROJECT AND SHALL BE VOID IF USED FOR ANY OTHER PROJECT WITHOUT THE WRITTEN PERMISSION OF NECSA.



MATL: - LEAD 4% ANTIMONIAL



REV	DESCRIPTION	DATE	UNLESS OTHERWISE SPECIFIED	MACH TOL. UNLESS OTHERWISE SPECIFIED	FINISH	SCALE	ITEM	QTY	DESCRIPTION	MATERIAL / GRADE	DRAWING NO.
01	ISSUE FOR APPROVAL	2008/01/01	DRG 0	0.1	0.1	1:2	1				
02	ISSUE FOR MANUFACTURING	2008/01/01	DRG 1	0.1	0.1	1:2	1				
03	ISSUE FOR APPROVAL	2008/01/01	DRG 2	0.1	0.1	1:2	1				
04	ISSUE FOR APPROVAL	2008/01/01	DRG 3	0.1	0.1	1:2	1				
05	ISSUE FOR APPROVAL	2008/01/01	DRG 4	0.1	0.1	1:2	1				
06	ISSUE FOR APPROVAL	2008/01/01	DRG 5	0.1	0.1	1:2	1				
07	ISSUE FOR APPROVAL	2008/01/01	DRG 6	0.1	0.1	1:2	1				
08	ISSUE FOR APPROVAL	2008/01/01	DRG 7	0.1	0.1	1:2	1				
09	ISSUE FOR APPROVAL	2008/01/01	DRG 8	0.1	0.1	1:2	1				
10	ISSUE FOR APPROVAL	2008/01/01	DRG 9	0.1	0.1	1:2	1				
11	ISSUE FOR APPROVAL	2008/01/01	DRG 10	0.1	0.1	1:2	1				
12	ISSUE FOR APPROVAL	2008/01/01	DRG 11	0.1	0.1	1:2	1				
13	ISSUE FOR APPROVAL	2008/01/01	DRG 12	0.1	0.1	1:2	1				
14	ISSUE FOR APPROVAL	2008/01/01	DRG 13	0.1	0.1	1:2	1				
15	ISSUE FOR APPROVAL	2008/01/01	DRG 14	0.1	0.1	1:2	1				
16	ISSUE FOR APPROVAL	2008/01/01	DRG 15	0.1	0.1	1:2	1				
17	ISSUE FOR APPROVAL	2008/01/01	DRG 16	0.1	0.1	1:2	1				
18	ISSUE FOR APPROVAL	2008/01/01	DRG 17	0.1	0.1	1:2	1				
19	ISSUE FOR APPROVAL	2008/01/01	DRG 18	0.1	0.1	1:2	1				
20	ISSUE FOR APPROVAL	2008/01/01	DRG 19	0.1	0.1	1:2	1				
21	ISSUE FOR APPROVAL	2008/01/01	DRG 20	0.1	0.1	1:2	1				
22	ISSUE FOR APPROVAL	2008/01/01	DRG 21	0.1	0.1	1:2	1				
23	ISSUE FOR APPROVAL	2008/01/01	DRG 22	0.1	0.1	1:2	1				
24	ISSUE FOR APPROVAL	2008/01/01	DRG 23	0.1	0.1	1:2	1				
25	ISSUE FOR APPROVAL	2008/01/01	DRG 24	0.1	0.1	1:2	1				
26	ISSUE FOR APPROVAL	2008/01/01	DRG 25	0.1	0.1	1:2	1				
27	ISSUE FOR APPROVAL	2008/01/01	DRG 26	0.1	0.1	1:2	1				
28	ISSUE FOR APPROVAL	2008/01/01	DRG 27	0.1	0.1	1:2	1				
29	ISSUE FOR APPROVAL	2008/01/01	DRG 28	0.1	0.1	1:2	1				
30	ISSUE FOR APPROVAL	2008/01/01	DRG 29	0.1	0.1	1:2	1				
31	ISSUE FOR APPROVAL	2008/01/01	DRG 30	0.1	0.1	1:2	1				
32	ISSUE FOR APPROVAL	2008/01/01	DRG 31	0.1	0.1	1:2	1				
33	ISSUE FOR APPROVAL	2008/01/01	DRG 32	0.1	0.1	1:2	1				
34	ISSUE FOR APPROVAL	2008/01/01	DRG 33	0.1	0.1	1:2	1				
35	ISSUE FOR APPROVAL	2008/01/01	DRG 34	0.1	0.1	1:2	1				
36	ISSUE FOR APPROVAL	2008/01/01	DRG 35	0.1	0.1	1:2	1				
37	ISSUE FOR APPROVAL	2008/01/01	DRG 36	0.1	0.1	1:2	1				
38	ISSUE FOR APPROVAL	2008/01/01	DRG 37	0.1	0.1	1:2	1				
39	ISSUE FOR APPROVAL	2008/01/01	DRG 38	0.1	0.1	1:2	1				
40	ISSUE FOR APPROVAL	2008/01/01	DRG 39	0.1	0.1	1:2	1				
41	ISSUE FOR APPROVAL	2008/01/01	DRG 40	0.1	0.1	1:2	1				
42	ISSUE FOR APPROVAL	2008/01/01	DRG 41	0.1	0.1	1:2	1				
43	ISSUE FOR APPROVAL	2008/01/01	DRG 42	0.1	0.1	1:2	1				
44	ISSUE FOR APPROVAL	2008/01/01	DRG 43	0.1	0.1	1:2	1				
45	ISSUE FOR APPROVAL	2008/01/01	DRG 44	0.1	0.1	1:2	1				
46	ISSUE FOR APPROVAL	2008/01/01	DRG 45	0.1	0.1	1:2	1				
47	ISSUE FOR APPROVAL	2008/01/01	DRG 46	0.1	0.1	1:2	1				
48	ISSUE FOR APPROVAL	2008/01/01	DRG 47	0.1	0.1	1:2	1				
49	ISSUE FOR APPROVAL	2008/01/01	DRG 48	0.1	0.1	1:2	1				
50	ISSUE FOR APPROVAL	2008/01/01	DRG 49	0.1	0.1	1:2	1				
51	ISSUE FOR APPROVAL	2008/01/01	DRG 50	0.1	0.1	1:2	1				
52	ISSUE FOR APPROVAL	2008/01/01	DRG 51	0.1	0.1	1:2	1				
53	ISSUE FOR APPROVAL	2008/01/01	DRG 52	0.1	0.1	1:2	1				
54	ISSUE FOR APPROVAL	2008/01/01	DRG 53	0.1	0.1	1:2	1				
55	ISSUE FOR APPROVAL	2008/01/01	DRG 54	0.1	0.1	1:2	1				
56	ISSUE FOR APPROVAL	2008/01/01	DRG 55	0.1	0.1	1:2	1				
57	ISSUE FOR APPROVAL	2008/01/01	DRG 56	0.1	0.1	1:2	1				
58	ISSUE FOR APPROVAL	2008/01/01	DRG 57	0.1	0.1	1:2	1				
59	ISSUE FOR APPROVAL	2008/01/01	DRG 58	0.1	0.1	1:2	1				
60	ISSUE FOR APPROVAL	2008/01/01	DRG 59	0.1	0.1	1:2	1				
61	ISSUE FOR APPROVAL	2008/01/01	DRG 60	0.1	0.1	1:2	1				
62	ISSUE FOR APPROVAL	2008/01/01	DRG 61	0.1	0.1	1:2	1				
63	ISSUE FOR APPROVAL	2008/01/01	DRG 62	0.1	0.1	1:2	1				
64	ISSUE FOR APPROVAL	2008/01/01	DRG 63	0.1	0.1	1:2	1				
65	ISSUE FOR APPROVAL	2008/01/01	DRG 64	0.1	0.1	1:2	1				
66	ISSUE FOR APPROVAL	2008/01/01	DRG 65	0.1	0.1	1:2	1				
67	ISSUE FOR APPROVAL	2008/01/01	DRG 66	0.1	0.1	1:2	1				
68	ISSUE FOR APPROVAL	2008/01/01	DRG 67	0.1	0.1	1:2	1				
69	ISSUE FOR APPROVAL	2008/01/01	DRG 68	0.1	0.1	1:2	1				
70	ISSUE FOR APPROVAL	2008/01/01	DRG 69	0.1	0.1	1:2	1				
71	ISSUE FOR APPROVAL	2008/01/01	DRG 70	0.1	0.1	1:2	1				
72	ISSUE FOR APPROVAL	2008/01/01	DRG 71	0.1	0.1	1:2	1				
73	ISSUE FOR APPROVAL	2008/01/01	DRG 72	0.1	0.1	1:2	1				
74	ISSUE FOR APPROVAL	2008/01/01	DRG 73	0.1	0.1	1:2	1				
75	ISSUE FOR APPROVAL	2008/01/01	DRG 74	0.1	0.1	1:2	1				
76	ISSUE FOR APPROVAL	2008/01/01	DRG 75	0.1	0.1	1:2	1				
77	ISSUE FOR APPROVAL	2008/01/01	DRG 76	0.1	0.1	1:2	1				
78	ISSUE FOR APPROVAL	2008/01/01	DRG 77	0.1	0.1	1:2	1				
79	ISSUE FOR APPROVAL	2008/01/01	DRG 78	0.1	0.1	1:2	1				
80	ISSUE FOR APPROVAL	2008/01/01	DRG 79	0.1	0.1	1:2	1				
81	ISSUE FOR APPROVAL	2008/01/01	DRG 80	0.1	0.1	1:2	1				
82	ISSUE FOR APPROVAL	2008/01/01	DRG 81	0.1	0.1	1:2	1				
83	ISSUE FOR APPROVAL	2008/01/01	DRG 82	0.1	0.1	1:2	1				
84	ISSUE FOR APPROVAL	2008/01/01	DRG 83	0.1	0.1	1:2	1				
85	ISSUE FOR APPROVAL	2008/01/01	DRG 84	0.1	0.1	1:2	1				
86	ISSUE FOR APPROVAL	2008/01/01	DRG 85	0.1	0.1	1:2	1				
87	ISSUE FOR APPROVAL	2008/01/01	DRG 86	0.1	0.1	1:2	1				
88	ISSUE FOR APPROVAL	2008/01/01	DRG 87	0.1	0.1	1:2	1				
89	ISSUE FOR APPROVAL	2008/01/01	DRG 88	0.1	0.1	1:2	1				
90	ISSUE FOR APPROVAL	2008/01/01	DRG 89	0.1	0.1	1:2	1				
91	ISSUE FOR APPROVAL	2008/01/01	DRG 90	0.1	0.1	1:2	1				
92	ISSUE FOR APPROVAL	2008/01/01	DRG 91	0.1	0.1	1:2	1				
93	ISSUE FOR APPROVAL	2008/01/01	DRG 92	0.1	0.1	1:2	1				
94	ISSUE FOR APPROVAL	2008/01/01	DRG 93	0.1	0.1	1:2	1				
95	ISSUE FOR APPROVAL	2008/01/01	DRG 94	0.1	0.1	1:2	1				
96	ISSUE FOR APPROVAL	2008/01/01	DRG 95	0.1	0.1	1:2	1				
97	ISSUE FOR APPROVAL	2008/01/01	DRG 96	0.1	0.1	1:2	1				
98	ISSUE FOR APPROVAL	2008/01/01	DRG 97	0.1	0.1	1:2	1				
99	ISSUE FOR APPROVAL	2008/01/01	DRG 98	0.1	0.1	1:2	1				
100	ISSUE FOR APPROVAL	2008/01/01	DRG 99	0.1	0.1	1:2	1				
101	ISSUE FOR APPROVAL	2008/01/01	DRG 100	0.1	0.1	1:2	1				

QUALITY RELATED

TYPE A50/B



L10

DRG. - H5067-00-02



DO NOT SCALE

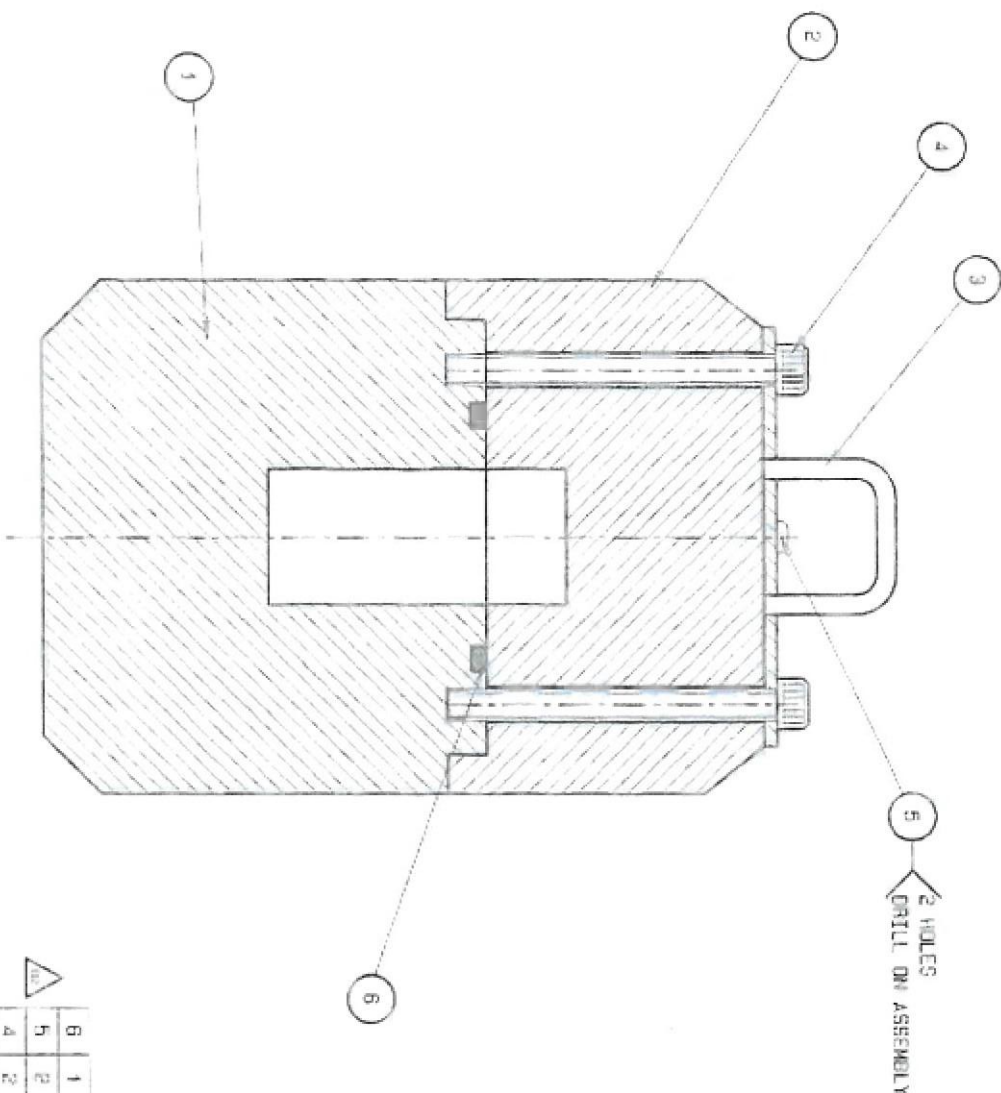
PROJECTION



IF IN DOUBT ASK

CONTRACT

THIS DRAWING IS THE PROPERTY OF NECSA and is not to be without the written consent of NECSA. IT IS TO BE USED ONLY FOR THE PROJECT AND NOT TO BE REPRODUCED OR TRANSMITTED IN ANY FORM OR BY ANY MEANS, ELECTRONIC OR MECHANICAL, INCLUDING PHOTOCOPYING, RECORDING, OR BY ANY INFORMATION STORAGE AND RETRIEVAL SYSTEM. NECSA ACCEPTS NO LIABILITY FOR ANY DAMAGE OR LOSS OF PROFITS, BUSINESS, OR REVENUE, OR FOR ANY SPECIAL, INCIDENTAL, OR CONSEQUENTIAL DAMAGES, INCLUDING LOST PROFITS, ARISING FROM THIS DRAWING IN ANY MANNER.



ITEM	QTY	DESCRIPTION	MATERIAL/GRADE	DRIVER NO.
6	1	1" Ø RING	10.95 x 5 SECTION DIA. NI-FILITE	
5	2	PLANHEAD SELF TAPPING SCREW	TYPE AP NO 10 x 20 LONG DIN 7971 (A2)	
4	2	CAP SCREW	HE067-00-04	
3	1	HANDLE	HE067-00-03	
2	1	LIN	HE067-00-02	
1	1	BODY	HE067-00-01	



DATE	DESCRIPTION	CHK'D	DATE	VALUES OTHERWISE STATED	MAIN DIM. UNLESS OTHERWISE STATED	ORIGIN. SCALE	UNITS	QTY	TITLE	DRG. NO.	MATERIAL/GRADE	DRIVER NO.
2014-08-22	ISSUE FOR APPROVAL	JBT	2014-08-22	REMOVE ALL SHARP EDGES SURFACE TEXTURES	10.95 - 11	1:1	MM	1	TYPE A50/B	HE067-00-00		
2014-08-22	ISSUE FOR MANUFACTURING	EP	2014-08-22	REMOVE ALL SHARP EDGES SURFACE TEXTURES	10.95 - 11	1:1	MM	1	TYPE A50/B	HE067-00-00		
2014-08-22	ITEM QTY: 10x20 LONG WAS NG 5x20 LONG	EP	2014-08-22	REMOVE ALL SHARP EDGES SURFACE TEXTURES	10.95 - 11	1:1	MM	1	TYPE A50/B	HE067-00-00		

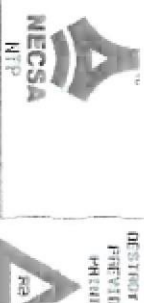
DATE	DESCRIPTION	CHK'D	DATE	VALUES OTHERWISE STATED	MAIN DIM. UNLESS OTHERWISE STATED	ORIGIN. SCALE	UNITS	QTY	TITLE	DRG. NO.	MATERIAL/GRADE	DRIVER NO.
2014-08-22	ISSUE FOR APPROVAL	JBT	2014-08-22	REMOVE ALL SHARP EDGES SURFACE TEXTURES	10.95 - 11	1:1	MM	1	TYPE A50/B	HE067-00-00		
2014-08-22	ISSUE FOR MANUFACTURING	EP	2014-08-22	REMOVE ALL SHARP EDGES SURFACE TEXTURES	10.95 - 11	1:1	MM	1	TYPE A50/B	HE067-00-00		
2014-08-22	ITEM QTY: 10x20 LONG WAS NG 5x20 LONG	EP	2014-08-22	REMOVE ALL SHARP EDGES SURFACE TEXTURES	10.95 - 11	1:1	MM	1	TYPE A50/B	HE067-00-00		

DATE	DESCRIPTION	CHK'D	DATE	VALUES OTHERWISE STATED	MAIN DIM. UNLESS OTHERWISE STATED	ORIGIN. SCALE	UNITS	QTY	TITLE	DRG. NO.	MATERIAL/GRADE	DRIVER NO.
2014-08-22	ISSUE FOR APPROVAL	JBT	2014-08-22	REMOVE ALL SHARP EDGES SURFACE TEXTURES	10.95 - 11	1:1	MM	1	TYPE A50/B	HE067-00-00		
2014-08-22	ISSUE FOR MANUFACTURING	EP	2014-08-22	REMOVE ALL SHARP EDGES SURFACE TEXTURES	10.95 - 11	1:1	MM	1	TYPE A50/B	HE067-00-00		
2014-08-22	ITEM QTY: 10x20 LONG WAS NG 5x20 LONG	EP	2014-08-22	REMOVE ALL SHARP EDGES SURFACE TEXTURES	10.95 - 11	1:1	MM	1	TYPE A50/B	HE067-00-00		

DATE	DESCRIPTION	CHK'D	DATE	VALUES OTHERWISE STATED	MAIN DIM. UNLESS OTHERWISE STATED	ORIGIN. SCALE	UNITS	QTY	TITLE	DRG. NO.	MATERIAL/GRADE	DRIVER NO.
2014-08-22	ISSUE FOR APPROVAL	JBT	2014-08-22	REMOVE ALL SHARP EDGES SURFACE TEXTURES	10.95 - 11	1:1	MM	1	TYPE A50/B	HE067-00-00		
2014-08-22	ISSUE FOR MANUFACTURING	EP	2014-08-22	REMOVE ALL SHARP EDGES SURFACE TEXTURES	10.95 - 11	1:1	MM	1	TYPE A50/B	HE067-00-00		
2014-08-22	ITEM QTY: 10x20 LONG WAS NG 5x20 LONG	EP	2014-08-22	REMOVE ALL SHARP EDGES SURFACE TEXTURES	10.95 - 11	1:1	MM	1	TYPE A50/B	HE067-00-00		

DATE	DESCRIPTION	CHK'D	DATE	VALUES OTHERWISE STATED	MAIN DIM. UNLESS OTHERWISE STATED	ORIGIN. SCALE	UNITS	QTY	TITLE	DRG. NO.	MATERIAL/GRADE	DRIVER NO.
2014-08-22	ISSUE FOR APPROVAL	JBT	2014-08-22	REMOVE ALL SHARP EDGES SURFACE TEXTURES	10.95 - 11	1:1	MM	1	TYPE A50/B	HE067-00-00		
2014-08-22	ISSUE FOR MANUFACTURING	EP	2014-08-22	REMOVE ALL SHARP EDGES SURFACE TEXTURES	10.95 - 11	1:1	MM	1	TYPE A50/B	HE067-00-00		
2014-08-22	ITEM QTY: 10x20 LONG WAS NG 5x20 LONG	EP	2014-08-22	REMOVE ALL SHARP EDGES SURFACE TEXTURES	10.95 - 11	1:1	MM	1	TYPE A50/B	HE067-00-00		

DATE	DESCRIPTION	CHK'D	DATE	VALUES OTHERWISE STATED	MAIN DIM. UNLESS OTHERWISE STATED	ORIGIN. SCALE	UNITS	QTY	TITLE	DRG. NO.	MATERIAL/GRADE	DRIVER NO.
2014-08-22	ISSUE FOR APPROVAL	JBT	2014-08-22	REMOVE ALL SHARP EDGES SURFACE TEXTURES	10.95 - 11	1:1	MM	1	TYPE A50/B	HE067-00-00		
2014-08-22	ISSUE FOR MANUFACTURING	EP	2014-08-22	REMOVE ALL SHARP EDGES SURFACE TEXTURES	10.95 - 11	1:1	MM	1	TYPE A50/B	HE067-00-00		
2014-08-22	ITEM QTY: 10x20 LONG WAS NG 5x20 LONG	EP	2014-08-22	REMOVE ALL SHARP EDGES SURFACE TEXTURES	10.95 - 11	1:1	MM	1	TYPE A50/B	HE067-00-00		



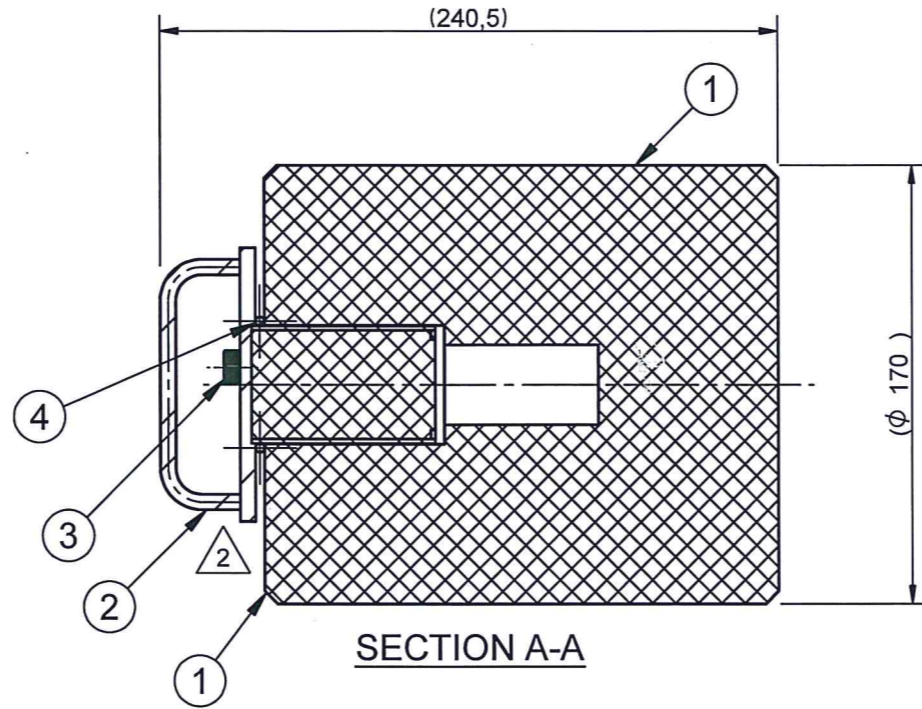
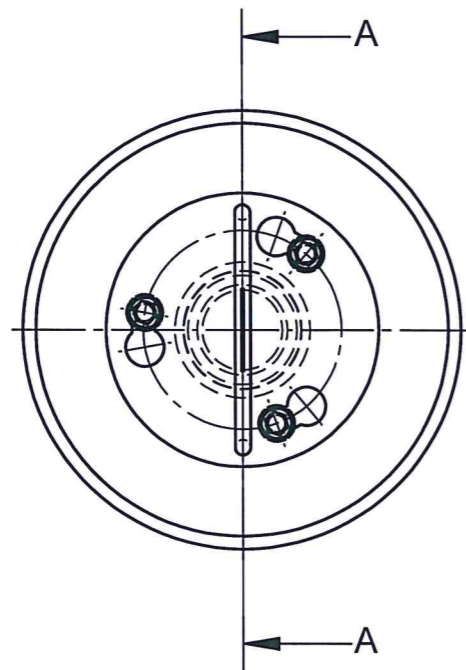
NECSA NTP

HE067-00-00



HE067-00-00

HE067-00-00



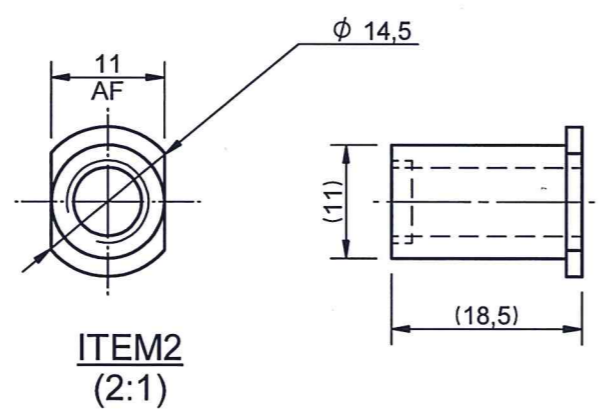
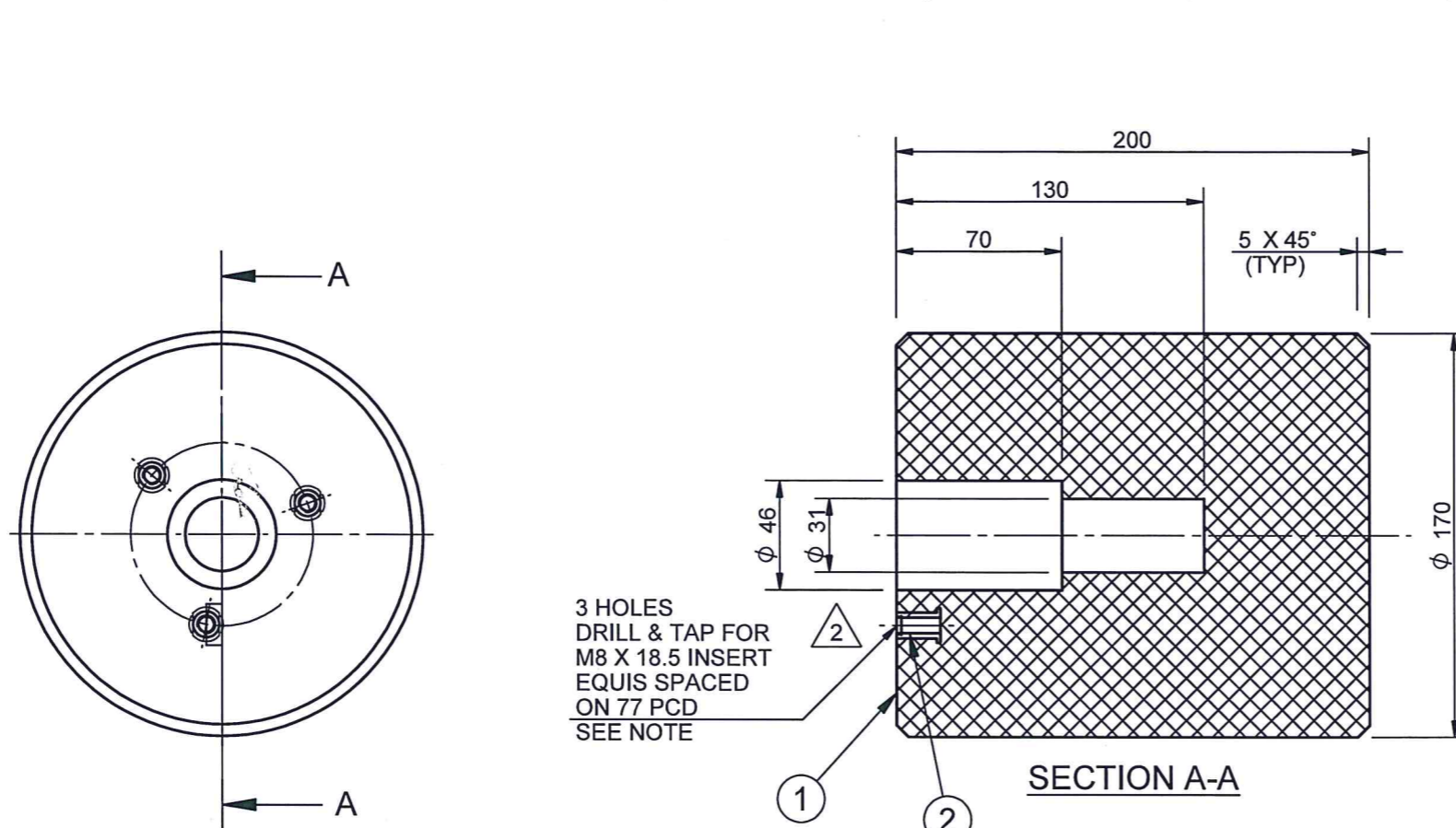
ITEM	QTY	DESCRIPTION	MATERIAL/REMARK	DRAWING NO
4	1	O RING	Ø40,87 ID X 3,5 SECTION DIA NITRILE	
3	3	CAPSCREW	M8 X 25 DIN 912 (A2)	
2	1	LID		H5033-00-02
1	1	BODY		H5033-00-01

REV	ZONE	DESCRIPTION	ECP NUMBER	DRAWN	CHK'D	DATE
0.1		ISSUED FOR APPROVAL				
1		ISSUED FOR MANUFACTURE		JDT	GP	2002/06/28
2	C4 & E5	ITEM 1 & 2 UPDATED	NTP-CCN-18/04	TM	GSN	2018/10/23
3	F3	CORRECTING CCN FROM 18/04 TO 18/14	NTP-CCN-18/14	TM	KKL	2023/02/02

UNLESS OTHERWISE STATED		IF IN DOUBT ASK	
DEBUR AND REMOVE ALL SHARP EDGES		1:2	NAME DATE SIGNATURE
SURFACE TEXTURE: $\sqrt{\text{µm}}$		APPROVED	LLM 2023/02/02
SCREW THREAD: ISO 6H 6g		CHECKED	KKL 2023/02/02
GEOMETRICAL TOLERANCES:		DRAWN	TM 2023/02/02
SANS 10111		<p>NTP <i>Actively enhancing life</i></p> <p>COPYRIGHT</p> <p>THIS DRAWING IS THE PROPERTY OF NTP AND MAY NOT WITHOUT THE WRITTEN AUTHORITY OF NTP BE COPIED OR COMMUNICATED TO A THIRD PARTY OR USED EITHER WHOLLY OR IN PART FOR ANY PURPOSE OTHER THAN THAT FOR WHICH IT IS SUPPLIED.</p>	
WELDING SYMBOLS:			
SANS 2553			
DO NOT SCALE			
UNITS: mm			

PROJECT: P1701 RED AREA DISPATCH		DESTROY ALL PREVIOUS PRINTS	
TEAMCENTER No H5033-00-00		A2	
TITLE: TYPE A70 PACKAGING CONTAINER		SHEET 1 OF 1	
DWG NO: H5033-00-00		REVISION 3	
		PROJECTION	

H5033-00-00



NOTE : POSITION THE INSERT IN THE CAST LEAD AS SHOWN ON DIMENSIONS.

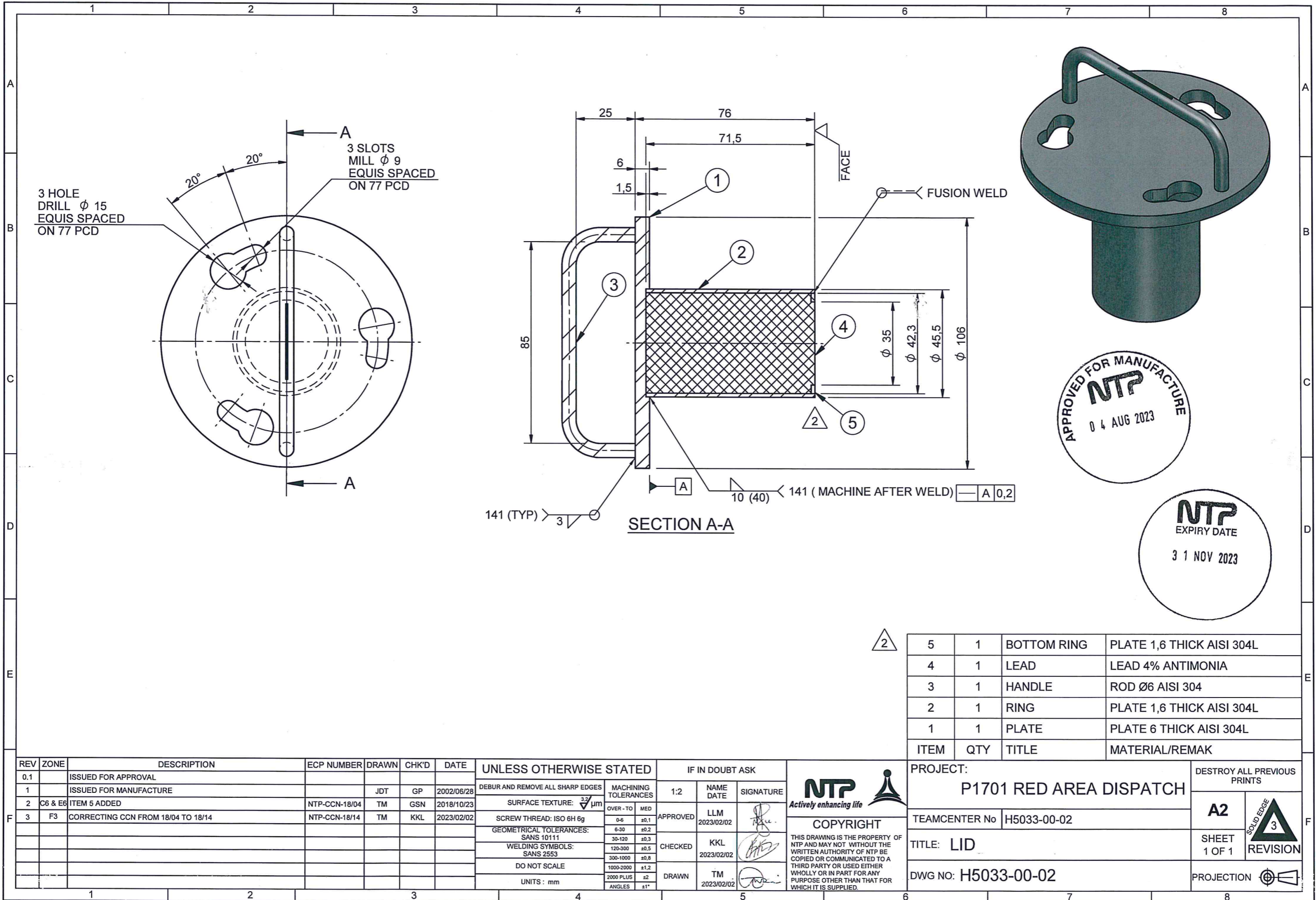
ITEM	QTY	DESCRIPTION	MATERIAL/REMARK
2	3	INSERT	THREADED INSERT M8 X 18.5 STAINLESS
1	1	BODY	LEAD 4% ANTIMONIAL

REV	ZONE	DESCRIPTION	ECP NUMBER	DRAWN	CHK'D	DATE
0.1		ISSUED FOR APPROVAL				
1		ISSUED FOR MANUFACTURE		JDT	GP	2002/06/28
2	C4 & E8	ITEM 2 UPDATED	NTP-CCN-18/04	TM	GSN	2018/10/23
3	F3	CORRECTING CCN FROM 18/04 TO 18/14	NTP-CCN-18/14	TM	KKL	2023/02/02

UNLESS OTHERWISE STATED		IF IN DOUBT ASK	
DEBUR AND REMOVE ALL SHARP EDGES		1:2	NAME DATE SIGNATURE
SURFACE TEXTURE: $\sqrt{3.2}$ μm		APPROVED	LLM 2023/02/02
SCREW THREAD: ISO 6H 6g		CHECKED	KKL 2023/02/02
GEOMETRICAL TOLERANCES: SANS 10111		DRAWN	TM 2023/02/02
WELDING SYMBOLS: SANS 2553		THIS DRAWING IS THE PROPERTY OF NTP AND MAY NOT WITHOUT THE WRITTEN AUTHORITY OF NTP BE COPIED OR COMMUNICATED TO A THIRD PARTY OR USED EITHER WHOLLY OR IN PART FOR ANY PURPOSE OTHER THAN THAT FOR WHICH IT IS SUPPLIED.	
DO NOT SCALE		COPYRIGHT	
UNITS : mm		NTP Actively enhancing life	

PROJECT: P1701 RED AREA DISPATCH		DESTROY ALL PREVIOUS PRINTS	
TEAMCENTER No H5033-00-01		A2	
TITLE: BODY		SHEET 1 OF 1	
DWG NO: H5033-00-01		REVISION 3	
		PROJECTION	

H5033-00-01



H5033-00-02

ITEM	QTY	TITLE	MATERIAL/REMAK
5	1	BOTTOM RING	PLATE 1,6 THICK AISI 304L
4	1	LEAD	LEAD 4% ANTIMONIA
3	1	HANDLE	ROD Ø6 AISI 304
2	1	RING	PLATE 1,6 THICK AISI 304L
1	1	PLATE	PLATE 6 THICK AISI 304L

REV	ZONE	DESCRIPTION	ECP NUMBER	DRAWN	CHK'D	DATE
0.1		ISSUED FOR APPROVAL				
1		ISSUED FOR MANUFACTURE		JDT	GP	2002/06/28
2	C6 & E6	ITEM 5 ADDED	NTP-CCN-18/04	TM	GSN	2018/10/23
3	F3	CORRECTING CCN FROM 18/04 TO 18/14	NTP-CCN-18/14	TM	KKL	2023/02/02

UNLESS OTHERWISE STATED		IF IN DOUBT ASK	
DEBUR AND REMOVE ALL SHARP EDGES	MACHINING TOLERANCES	1:2	NAME DATE SIGNATURE
SURFACE TEXTURE: $\sqrt{32}$ μm	OVER - TO MED	APPROVED	LLM 2023/02/02
SCREW THREAD: ISO 6H 6g	0-6 ±0,1	CHECKED	KKL 2023/02/02
GEOMETRICAL TOLERANCES: SANS 10111	6-30 ±0,2	DRAWN	TM 2023/02/02
WELDING SYMBOLS: SANS 2553	30-120 ±0,3		
DO NOT SCALE	120-300 ±0,5		
UNITS : mm	300-1000 ±0,8		
	1000-2000 ±1,2		
	2000 PLUS ±2		
	ANGLES ±1°		

NTP
Actively enhancing life

COPYRIGHT

THIS DRAWING IS THE PROPERTY OF NTP AND MAY NOT WITHOUT THE WRITTEN AUTHORITY OF NTP BE COPIED OR COMMUNICATED TO A THIRD PARTY OR USED EITHER WHOLLY OR IN PART FOR ANY PURPOSE OTHER THAN THAT FOR WHICH IT IS SUPPLIED.

PROJECT: P1701 RED AREA DISPATCH

TEAMCENTER No: H5033-00-02

TITLE: LID

DWG NO: H5033-00-02

DESTROY ALL PREVIOUS PRINTS

A2

SHEET 1 OF 1

PROJECTION