

Supply of Smart Meters – suppliers Engagements

The event will start at 09:00

01 January 2025
09:00 – 12:00
Teams Boardroom

Theme: Safety Talk



Emergency evacuation

Working from home

- Keep walkways clear of obstacles.
- Ensure that your computer cords are away from the walkway.
- Remember to conduct regular at-home hazard assessments.
- Remember not only physical, but chemical hazards too.
- Ensure that house keys or garage remote controls are kept at a visible spot.
- Familiarize yourself with safe exit points in and around your household.
- If possible, have a fire extinguisher nearby, ensure that everyone knows how to use it.
- Display emergency contact details (e.g., SAPS, Fire Brigade, Ambulance etc.)
- Calmly evacuate the house and call emergency services as may be necessary.



Working from the office

- Ensure that you are familiar with the office emergency plans.
- Following an emergency alarm, take your essentials and proceed to the emergency routes.
- Cooperate with the site emergency team and security guards.
- Proceed to the assembly point where a roll-call will be done.
- Do not go back to the building until you have been instructed to do so by the evacuation team.

Zero Harm
Be aware. Take care.





Safety Incident Recall

- On 28 June 2024, the contractor FLJ Electrician employees were appointed under the purchase order 4503425033 to mount the pole top box, string the service cables and connect to the ready boards in the customers house.
- At approximately 16:15, while the contractor employee was working at the pole top box, he made contact with electricity. The contractor employee was suspended by the FAS while still on a step ladder and fellow colleagues and members of public rescued the injured employee.
- The Contractor Supervisor called ER24, the emergency services arrived within 45 minutes and transported the injured employee to Sebokeng hospital, where the injured employee was airlifted to Alberton Netcare Private hospital.
- The injured employee was operated on the same night and he was later reported to be in a critical but stable condition. The employee is still in ICU receiving medical care.
- The incident is still under investigation.

Description of the Incident



MV Line crossing above the LV line which the injured employee made contact with.

LV line which the employee was working on.

Injured position after incident and ladder position.

- The contractor employee made contact with electricity while stringing the service cable connecting to the ready board in the customer's house.
- The contractor had a valid purchase order, 4503425033.
- The contractor did not obtain the permit to work on the day of the incident.
- The contractor did not report to the CNC on the day of the incident.
- The risk assessment was completed for this day.
- The controls and mitigation for the risks identified were not adequate.
- The pre task plan was not submitted to the committee on the day of the preliminary investigation.
- The contractor did not send the daily risk assessment to SHEQS.
- The Contractor Supervisor was on site.
- The transformer where work was taking place was off and the MV fuses removed.
- The MV line crosses above the LV line which the contractor employee was working on.
- The contractor employee was working under supervision but it was not effective.(No direct supervision.
- The height of the MV Line is not according to the standard.

- Pre-planning was not properly done (Supervisor was busy verifying customer payments).
- The contractor employees identified the risk in terms of safe working clearance between the MV and LV line/pole but did not mitigate or put controls on what to do.
- Contractor employee breached the MV clearance and made contact with the MV line.
- The Contractor Supervisor was not directly supervising the employee at the time of the incident.

- The contractor should inform the CNC every morning before work commences, so that the CNC is aware that there is a contractor working in their area.
- The contractor should have the necessary permit for the job of the current day.
- The safe working clearance was breached and the Contractor did not ask for the line to be switched off as a safety panel.

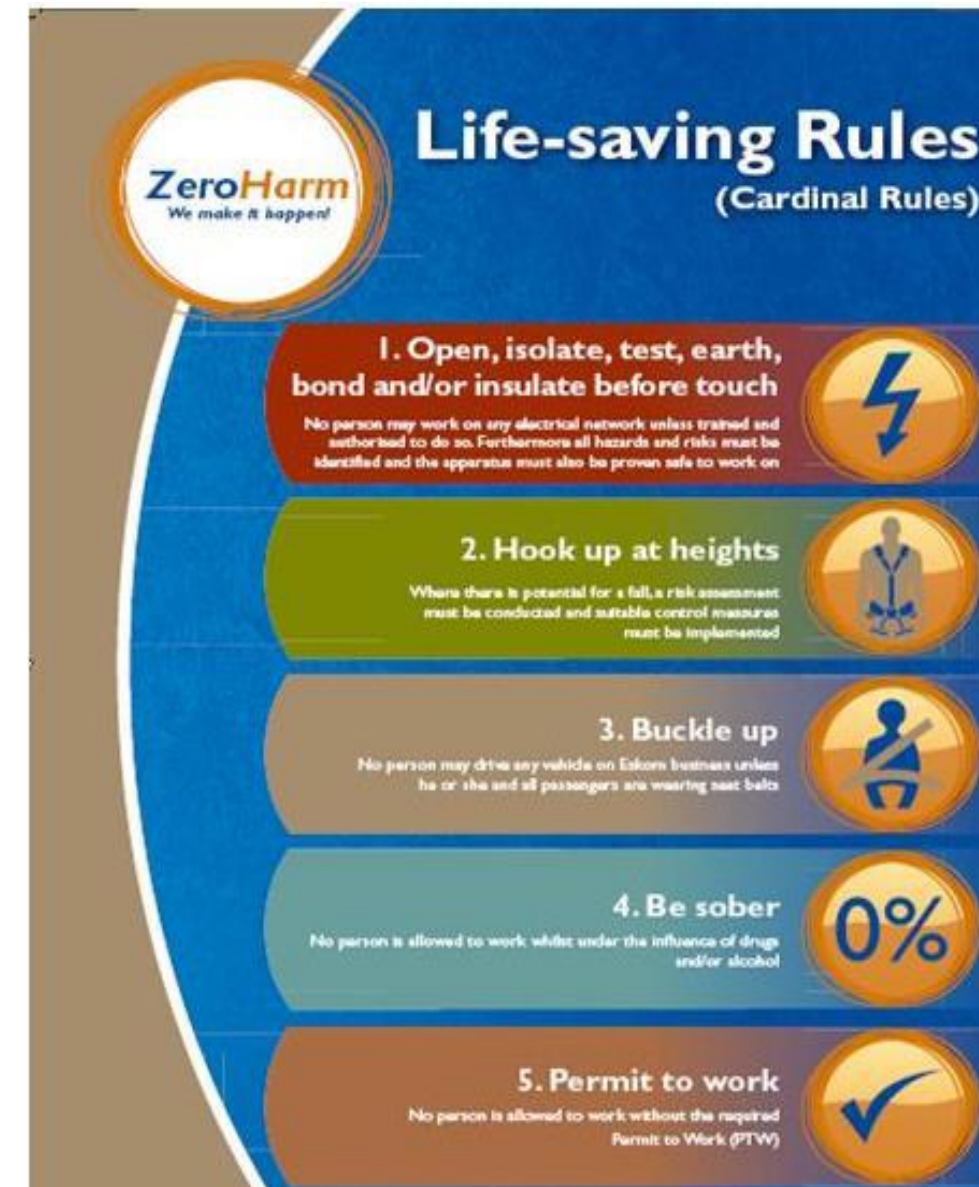
Lessons learnt from previous electrical contact incidents

- Only trained and authorized persons should be working on the network or apparatus.
- ☐ The risk assessment must include all persons undertaking the work. The identified risks must be mitigated before work commences.
- Direct supervision must only be done by persons carrying out the work and by someone who is present at all times.
- Permits should be issued when the work requires this.
- The Operating Regulations for High Voltage Systems (ORHVS) must be adhered to for the safe execution of work.



- The latest Eskom standards and relevant Technical / Engineering Instructions must be followed to ensure integrity and safety of work undertaken.
- The correct PPE should be issued to all persons involved in work.

- ***Always remember:***
- No operating condition or urgency of service can justify endangering a person's life or causing injury or damage to the environment.
- Adhere to life-saving rules, standards and procedures, as well as



Thank You

