



NKANGALA DISTRICT MUNICIPALITY



PROJECT NO: 154170
REFURBISHMENT OF A1, B1, C1 AND D1 ELECTRICAL SUB-STATIONS AND
REFURBISHMENT OF HIGH MAST LIGHTS IN VICTOR KHANYE LOCAL
MUNICIPALITY

C4 SITE INFORMATION

PART C4: SITE INFORMATION

C4: SITE INFORMATION

C4.1: LOCALITY PLAN

The project is located in Delmas within Victor Khanye Local Municipality's area of jurisdiction in the Nkangala Region in Mpumalanga. The GPS coordinates of this township are as follows:

Table1: GPS coordinates for proposed project

Description	Longitude	Latitude
Delmas	28° 40' 59.59" E	-26° 08' 47.76" S



Figure 1.1 – Locality Plan

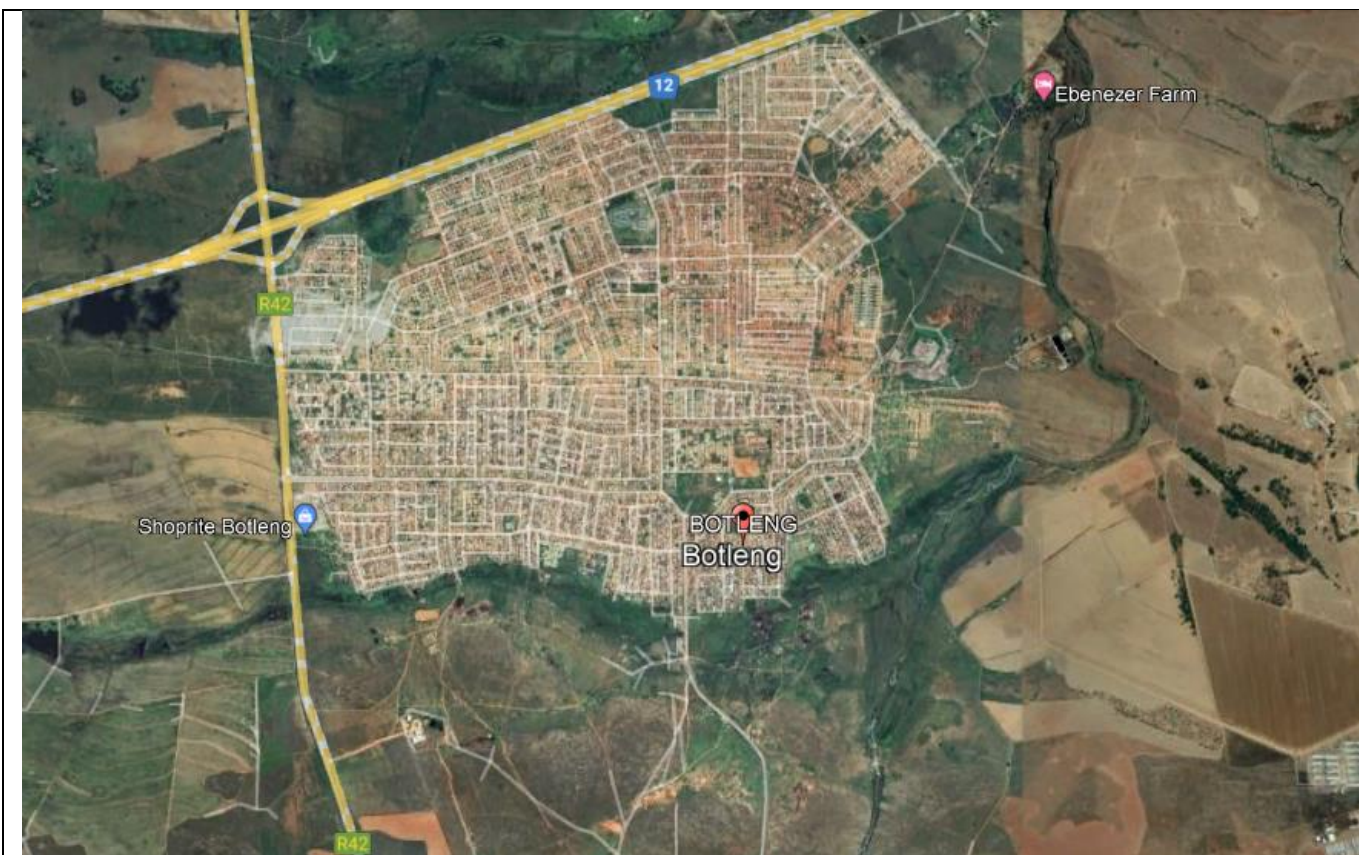


Figure 1.2 – Location for high mast lights

The Project Coordinates are as follows:

High Mast lights

	Ward	Area	Coordinates
1.	4	Extension 5 Clinic	S 26.10495° E 28.6943°
2.	4	Extension 6 Old Proper Clinic	S 26.10544° E 28.69899°
3.	4	Extension 4 Botleng Library	S 26.10495° E 28.6943°
4.	3	Extension 4 RDP Botleng	S 26.1004° E 28.669°
5.	3	Extension 4 RDP Botleng	S 26.10123° E 28.69092°
6.	3	Extension 5 RDP N12	S 26.09005° E 28.69007°
7.	1	Extension 1 Botleng Cemetery	S 26.1264° E 28.68613°
8.	5	Extension 3 Botleng	S 26.10365° E 28.6812°
9.	5	Extension 3 Botleng	S 26.10487° E 28.68314°
10.	5	Extension 3 Botleng	S 26.10576° E 28.68633°
11.	6	Delpark (Vukzenzile)	S 26.13677° E 28.70842°
12.	6	Delpark (Vukzenzile)	S 26.13655°



			E 28.70438°
13.	6	Delpark (Extension 2)	S 26.14272° E 28.69454°
14.	6	Delpark (Extension 2)	S 26.13924° E 28.69656°
15.	6	Delpark (Extension 2)	S 26.13719° E 28.69578°