

0.6MM KLIPLOK CHROMADEK
PROFILE ROOF SHEETING @ 12' ON
SIGATION ON 76X50MM S.A.
PINE PURLINS @ 900MM C/CB ON
PREFABRICATED TIMBER TRUSSES
TO ENGINEER'S DETAIL AND
SPECIFICATION

AIR BRICKS

BDE LINTOLS

BDE SILLS

NE1 NE1 NE1 NE1 NE1 NE1

1000 220 1600 110 220 110 220 2070 220 1000

9530

1000 220 2650 220 1940 220 2070 220 1000

1000 2375

1000 500 1500

1000 1500

RAMP MIN. FALL 1:12

1000 mm WIDE CONCRETE APRON SLAB PLACED WITH CONSTRUCTION JOINT AT 2500 MM INTERVALS.

PRE-MANUFACTURED CONCRETE WASH TROUGHS

NE1 NE1 NE1 NE1 NE1 NE1

D2 D2 D2

D1 D1 D1

G1 G1 G1

NE7 NE1 NE7

1 2 3

0.6MM KLIPLOCK CHROMADEL
PROFILE ROOF SHEETING @ 1'2" ON
BIBLATION ON 76X50MM S.A.
PINE PURLINS @ 900MM C/GS ON
PREFABRICATED TIMBER TRUSSES
TO ENGINEER'S DETAIL AND SPECIFICATION

FASCIA BOARD

FACEBRICK STRETCHER BOND

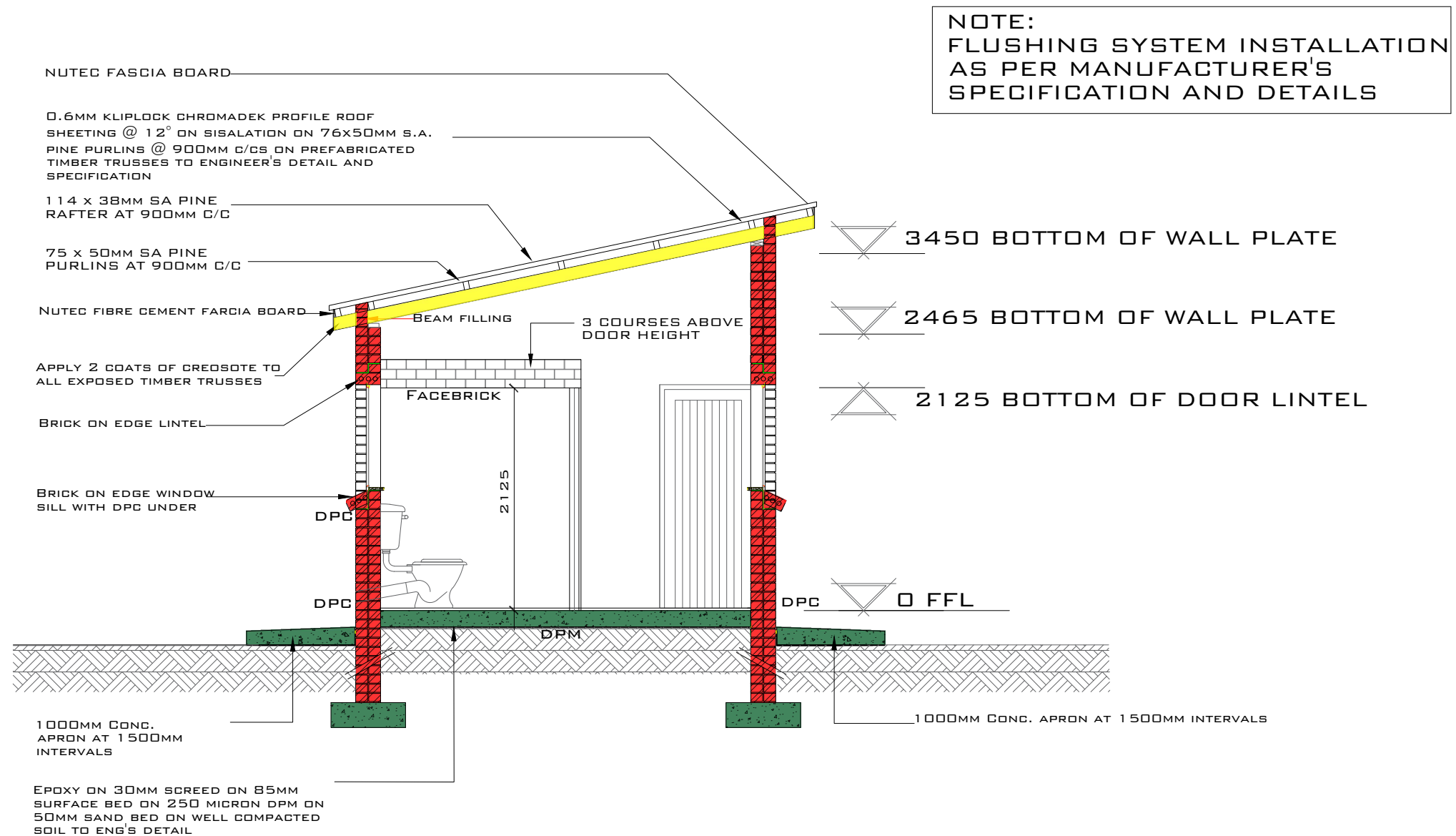
AIR BRICKS

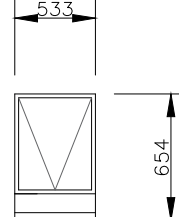
CONCRETE WHB

D1
G1

NGL

SIDE
SCALE 1:50



WINDOW SCHEDULE	
	
WINDOW NO.	NE 1
CATALOGUE	NE 1
FRAME	533 x 654MM HIGH STANDARD STEEL WINDOW FRAME
FRAME FINISH	SPOT PRINING DEFECTS IN PRE-PRIME SURFACE WITH ZINC CHROMATE PRIMER & APPLY ONE UNIVERSAL UNDER COAT & TWO COATS EPWP GOLDEN BROWN GLOSS ENAMEL PAINT ON STEEL
GLAZING	6.28MM OBFUSCURE SAFETY GLASS
NO. REQUIRED	7

CUBICLE DOOR		WINDOW SCHEDULE	
FRAME TYPE	SINGLE REBATE STEEL DOOR FRAME - SIZE 83x53mm (FRAME UNDERCUT TO 150mm)	WINDOW NO.	N2
FRAME FINISH	PRIME AND PAINT UNDERCOAT AND 2 COATS GLOSS ENAMEL - COLOUR TBC	CATALOGUE	NE7
DOOR LEAF	44mm FRAMED LEDGED EMBRACED DOOR SIZE 813x2032mm (DOOR RAISE BY 150mm TO TOP OF FRAME)	FRAME	1022 x 654mm HIGH STANDARD STEEL WINDOW FRAME
LEAF FINISH	UNDER COAT AND MINIMUM 2 COATS GLOSS ENAMEL - COLOUR TBC	FRAME FINISH	SPOT PRINING DEFECTS IN PRE-PRIME SURFACE WITH ZINC CHROMATE PRIMER & APPLY ONE UNIVERSAL UNDER COAT & TWO COATS EPWP GOLDEN BROWN GLOSS ENAMEL PAINT ON STEEL
LOCK	TOILET INDICATOR LOCK	GLAZING	6.28mm OBSCURE SAFETY GLASS
IRONMONGERY	100mm CHROME PLATED "D" TYPE HANDLE 3 BY SOLID BRACE HINGES		
NO. REQUIRED	3	NO. REQUIRED	2

ENTRANCE DOOR		DOOR SCHEDULE	
FRAME TYPE	SINGLE REBATE STEEL FRAME TO FIT 220MM WALL (D11)	DOOR NO.	SINGLE REBATE STEEL FRAME TO FIT 110MM WALL (D2)
FRAME FINISH	PRIME AND PAINT UNDERCOAT AND 2ND. FINISHING COATS IN GLOSS ENAMEL COLOUR TBC	CATALOGUE	PRIME AND PAINT UNDERCOAT AND 2ND. FINISHING COATS IN BROWN VANISH GLOSS ENAMEL
DOOR LEAF	44MM FRAMED LEDGED AND BRACED DOOR SIZE 813x2032mm INCLUDING EXTERNAL WEATHER BAR	DOOR LEAF	813 x 1914 x 44mm SEMI SOLID DOOR
LEAF FINISH	UNDER COAT AND MINIMUM 2 COATS GLOSS ENAMEL - COLOUR TBC	LEAF FINISH	3ND. EPWP GOLDEN BROWN HIGH GLOSS ENAMEL PAINT
LOCK	3 LEVER MORTICE LOCK SET	LOCK	2 LEVER MORTICE LOCK STANDARD AS PER MANUFACTURE WITH BARREL BOLT
IRONMONGERY	100MM BRACE CABIN HOOK	NO. REQUIRED	3
NO. REQUIRED	3		

1. ALL WORK SHALL BE DONE IN ACCORDANCE WITH SABS 0400/SANS 10400 REGULATIONS.
2. ALL DISCREPANCIES SHALL BE REPORTED TO THE ARCHITECT IMMEDIATELY.
3. DRAWINGS NOT TO BE SCALED USE DIMENSIONS GIVEN.
4. CHECK ALL DIMENSIONS AND LEVELS ON SITE BEFORE COMMENCEMENT OF WORKS.
5. ALL ENGINEERS AND SPECIALISTS DWGS SHALL TAKE PREFERENCE OVER ARCHITECT DWGS.
6. NO CONSTRUCTION MAY PROCEED ON SITE PRIOR TO THE APPROVAL OF DRAWINGS BY THE LOCAL AUTHORITY. ANY BUILDING WORK THAT COMMENCES PRIOR TO THE BUILDING PLAN APPROVAL IS COMPLETELY AT THE OWNER'S OWN RISK.
7. THE ARCHITECT MAY NOT BE HELD RESPONSIBLE FOR ANY LOSS OR DAMAGE WHATSOEVER THAT MAY RESULT FROM WORKS BEING DONE WITHOUT APPROVED BUILDING PLANS.
8. CONTRACTOR TO VERIFY ALL LEVELS, HEIGHTS AND DIMENSIONS ON SITE AND TO CHECK SAME AGAINST THE DRAWINGS BEFORE PUTTING ANY WORK IN HAND. LEVELS ARE APPROXIMATE AND MUST BE VERIFIED BY THE CONTRACTOR PRIOR TO PRICING AND CONSTRUCTION.
9. ALL BUILDING BY-LAWS, HEALTH AND FIRE REQUIREMENTS TO BE ADHERED TO.
10. ALL ELECTRICAL AND DRAINAGE WORKS TO BE EXECUTED BY REGISTERED TRADESMEN.
11. DEMOLITION MATERIAL TO BE REUSED AS BACKFILL TO NEW CONSTRUCTION AS PER ENGINEER SPEC.
12. THE DRAWINGS FALL UNDER COPYRIGHT AND MAY NOT BE COPIED OR REPRODUCED.

1. ALL WORK SHALL BE DONE IN ACCORDANCE WITH SABS 0400/SANS 10400 REGULATIONS.
2. EXISTING DRAINAGE TO BE COMPREHENDED AS PER EXISTING HOUSE PLANS. DRAINAGE RELOCATION AS PER NEW PROPOSED HOUSE CONSTRUCTION.

STAND/ ERF No.		
STAND AREA.	m ²	CO-ORDINATES.
EXISTING BUILDINGS TO BE DEMOLISHED		m ²
NEW BUILDING		m ²

REVISION		
No.	DESCRIPTION	DATE
1		
2		
3		



SCHOOL <div style="text-align: center;"> HOVHENI <u>PRIMARY SCHOOL</u> </div>		
DATE: 07 NOVEMBER 2022		
PR. ARCH. T. : MISS. FEYA K. NTLHOLA / 076 152 9760		
DWG DESCRIPTION.		
GR R ABLUTIONS		
SCALE. As Shown	PAPER: A1	
DRAWING NO. 1039-TMT-HOVHENI-ARC 1/4	Rev. 2	