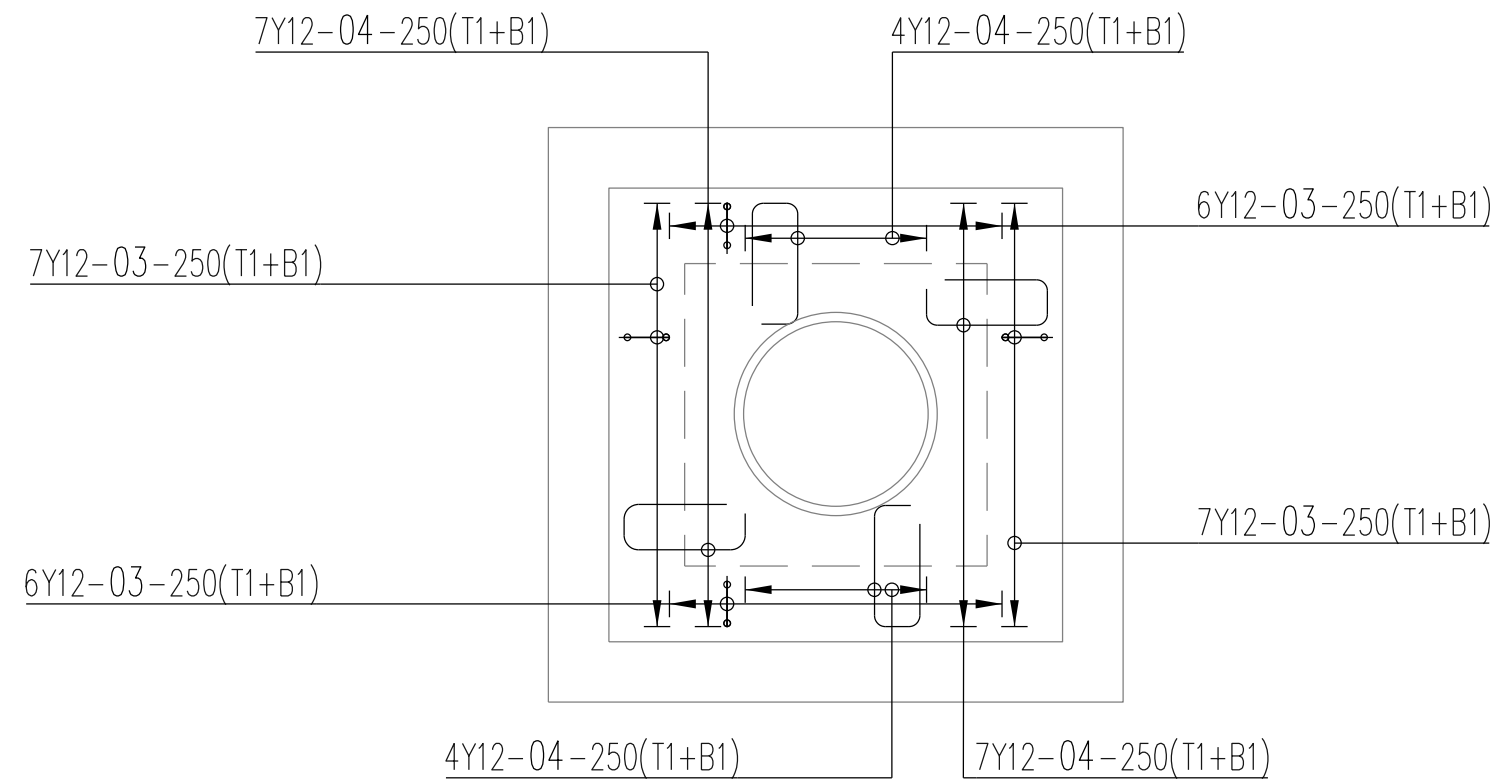
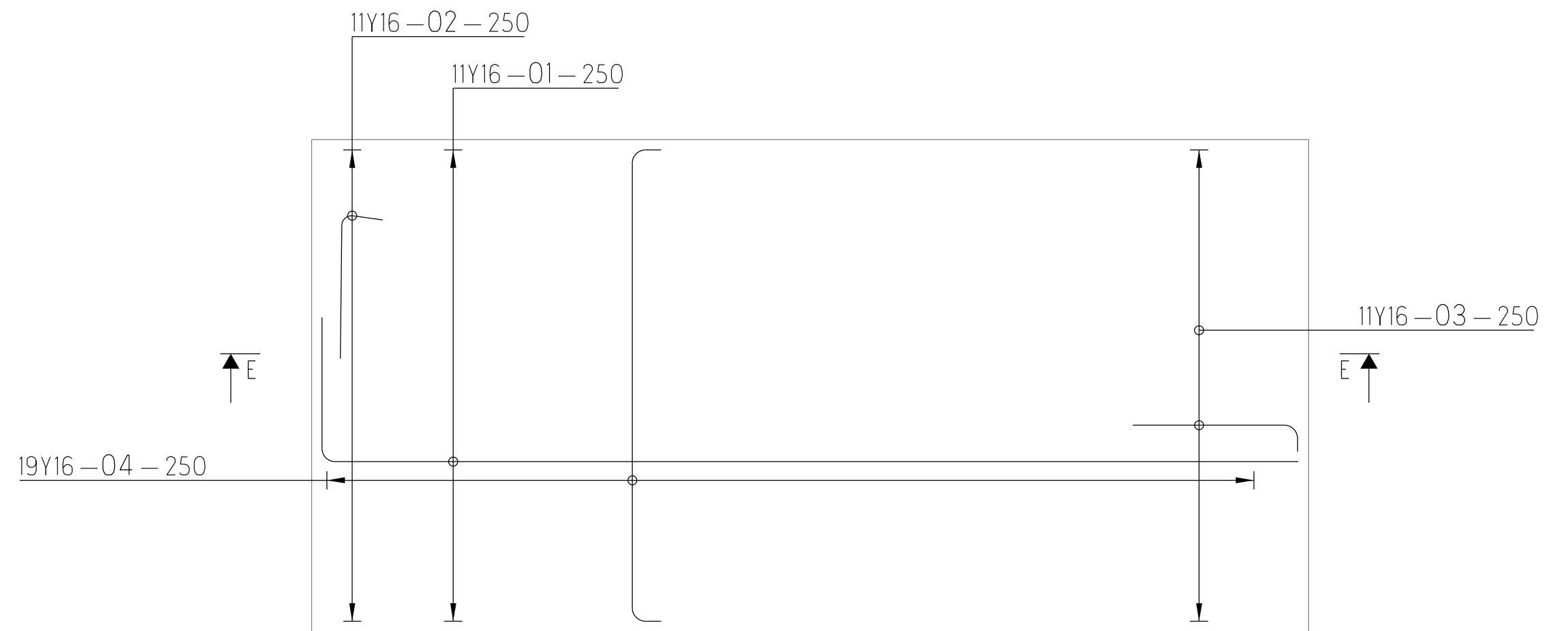


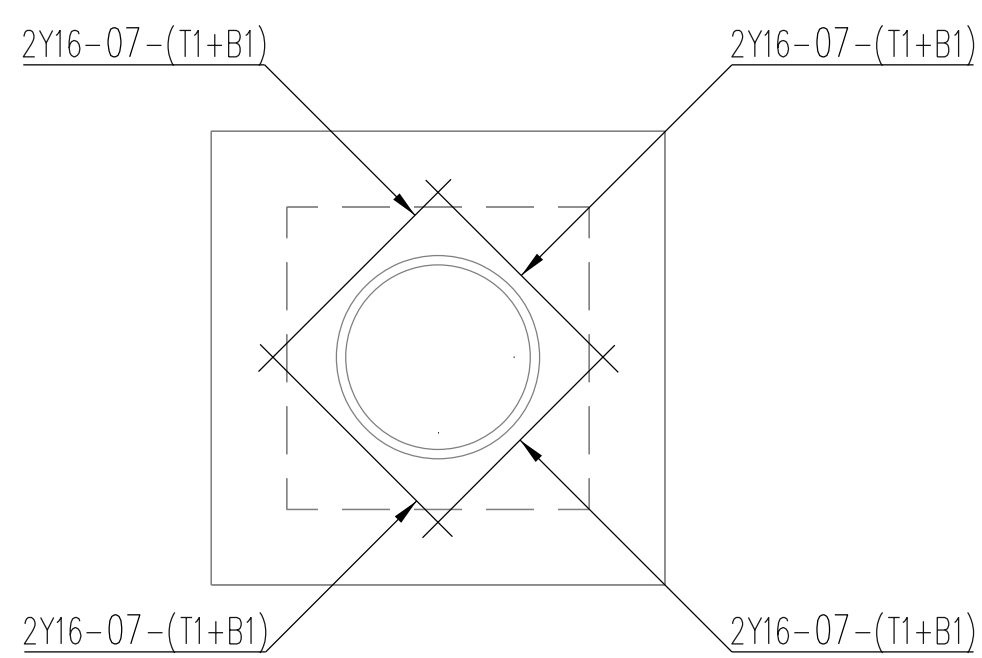
SUMP BASE REBAR PLAN VIEW
SCALE 1:25



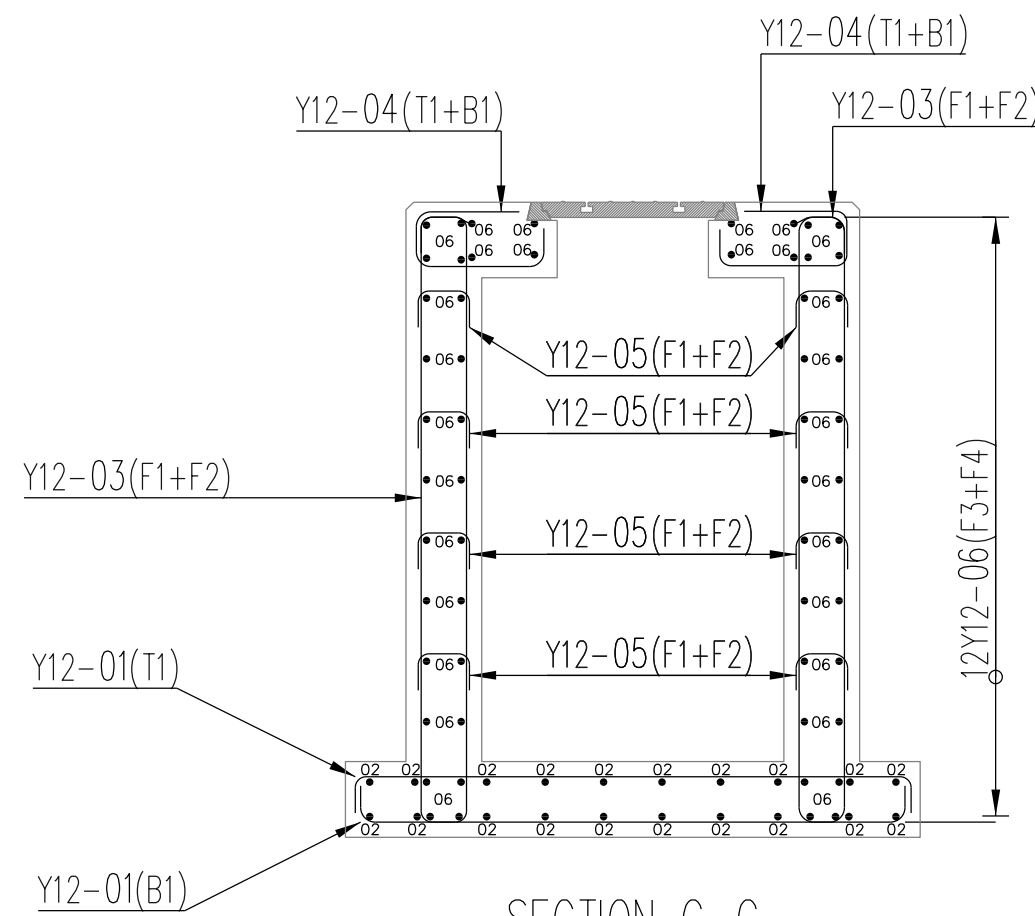
SUMP WALLS REBAR PLAN VIEW 1
SCALE 1:25



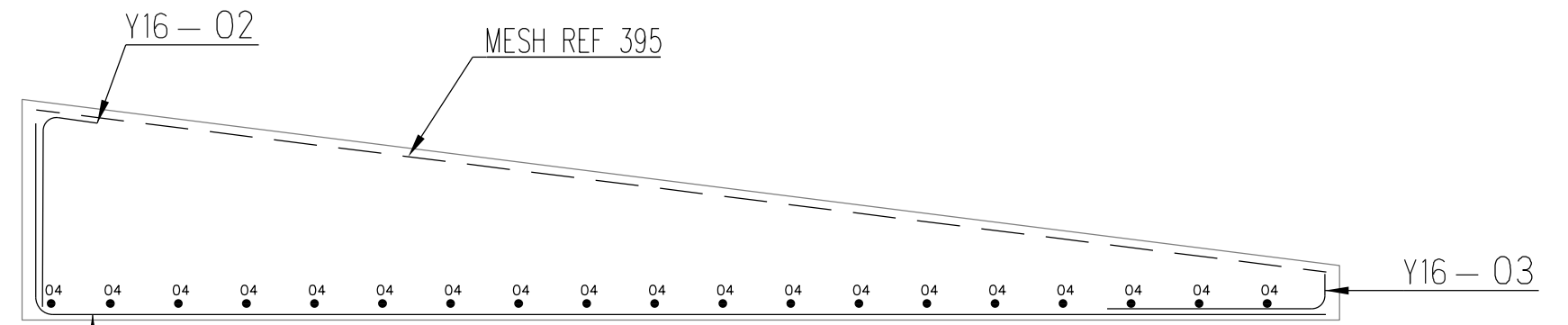
RAMP REINFORCEMENT
PLAN VIEW
SCALE 1:25



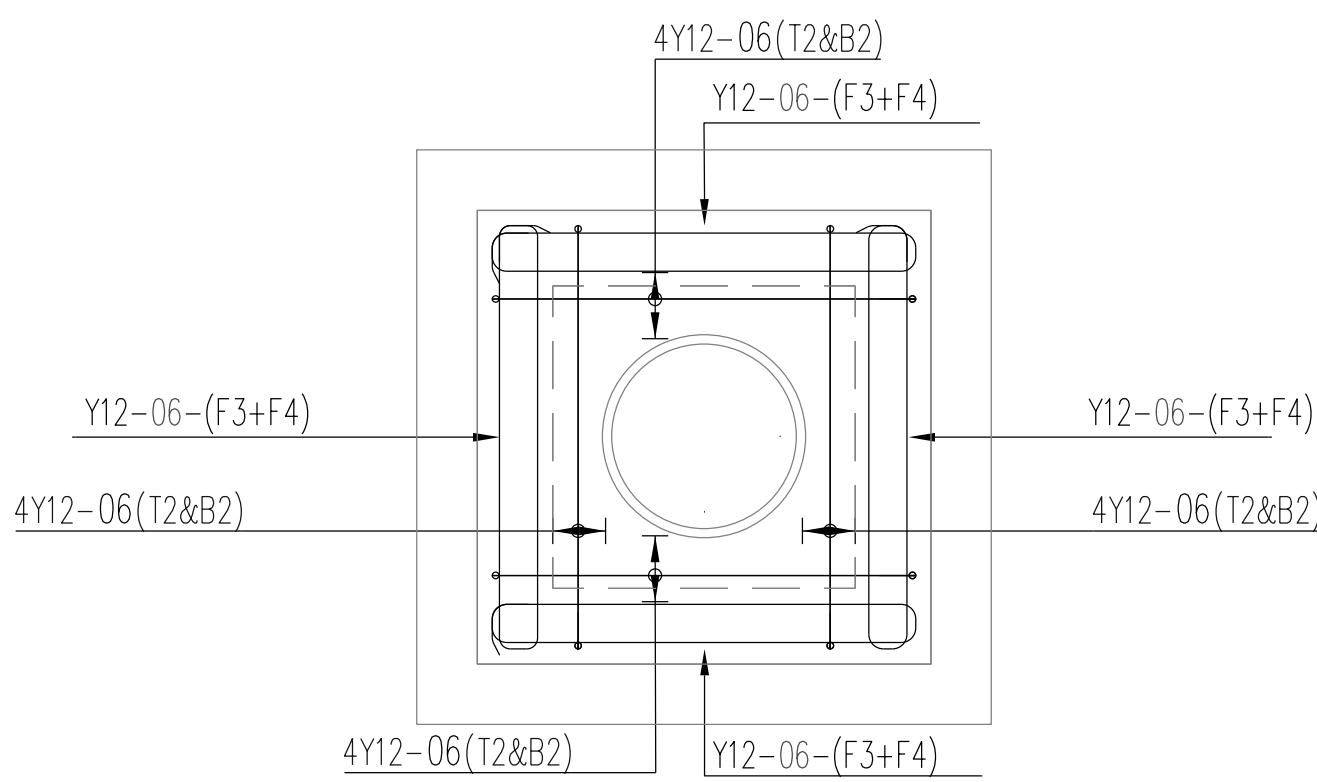
TRIMMER REBAR AT MANHOLE OPENINGS
PLAN VIEW 3
SCALE 1:25



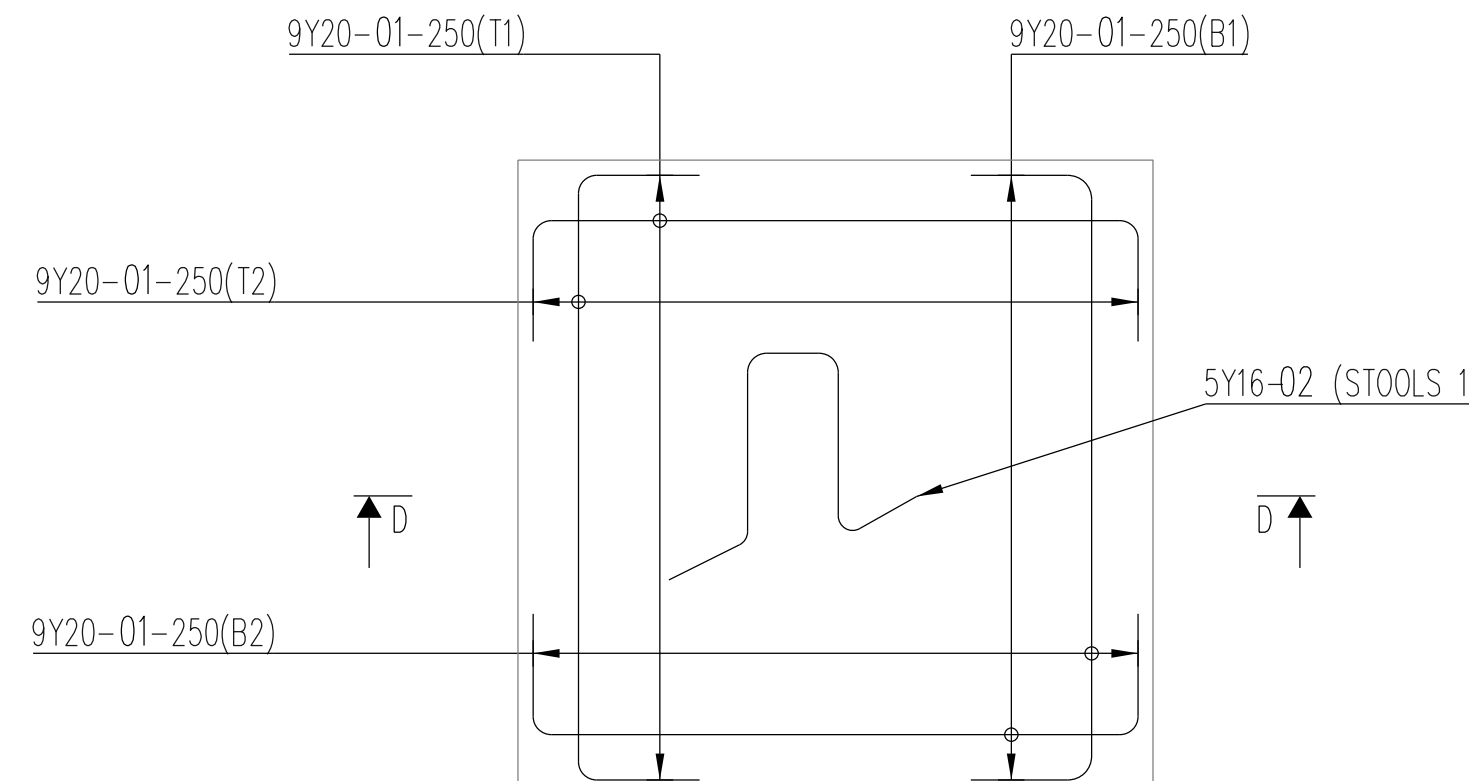
SECTION C-C
SCALE 1:25



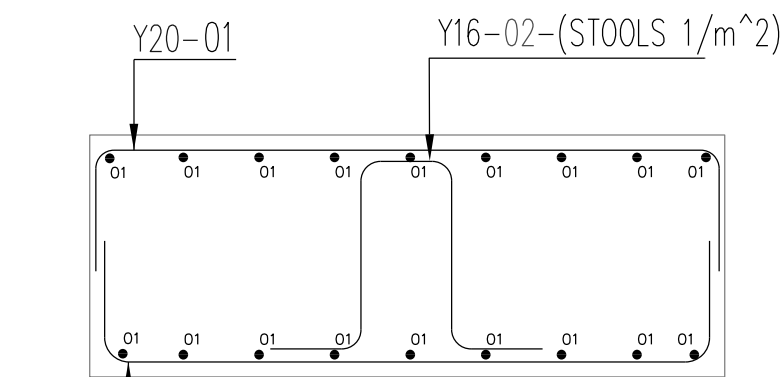
SECTION E-E
SCALE 1:25



SUMP WALLS REBAR PLAN VIEW 2
SCALE 1:25



PAD FOOTING REBAR PLAN VIEW 1
SCALE 1:25



SECTION D-D
SCALE 1:25

MEMBER	NO OF	NO BARS	DIA	CUT LENGTH	TOTAL	BAR MARK	SC	A	B	C	D	E/R	kg
RAMP	1	11	Y16	5400	11	01	37	700	4740				94
	1	11	Y16	750	11	02	99A	700	90	200			13
	1	11	Y16	900	11	03	37	120	800				16
	1	19	Y16	2550	19	04	35	2290					76

	6	8	10	12	16	20	25	32	40	TOTAL
R										
Y					199					199
TOTAL					199					199

MEMBER	NO OF	NO BARS	DIA	CUT LENGTH	TOTAL	BAR MARK	SC	A	B	C	D	E/R	kg
PAD FOOTING	6	36	Y20	2700	216	01	38	400	2000	400			1438
	6	5	Y16	2000	30	02	83	300	620	300	300		95

	6	8	10	12	16	20	25	32	40	TOTAL
R										
Y					95	1438				1533
TOTAL					95	1438				1533

MEMBER	NO OF	NO BARS	DIA	CUT LENGTH	TOTAL	BAR MARK	SC	A	B	C	D	E/R	kg
SUMP	1	18	Y12	2000	18	01	35	1800					32
	1	18	Y12	2000	18	02	35	1800					32
	1	26	Y12	4400	26	03	60	2000	150				102
	1	22	Y12	950	22	04	52	340	150	400	120		19
	1	26	Y12	350	26	05	35	150					8
	1	64	Y12	3150	64	06	60	1400	120				179
	1	8	Y16	900	8	07	20	900					11

	6	8	10	12	16	20	25	32	40	TOTAL
R										
Y					371	11				382
TOTAL					371	11				382

	6	8	10	12	16	20	25	32	40	TOTAL
R										
Y					371	305	1438			2114
TOTAL					371	305	1438			2114

FOR TENDER PURPOSES ONLY

NOTE:

- COVER TO REINFORCEMENT=50mm
- REINFORCEMENT SHALL BE IN ACCORDANCE WITH SANS 920:2011.
- REINFORCEMENT SHALL BE FABRICATED IN ACCORDANCE WITH SANS282:2011.
- ALL STEEL REINFORCEMENT SHALL BE HOT ROLLED HIGH TENSILE DEFORMED BARS, MINIMUM YIELD STRENGTH OF 450MPa.
- MINIMUM LAPPING OF REINFORCEMENT : 50 x BAR DIAMETER.

AUTHORISED FOR ESKOM BY: Z. NKOSI Pr.Eng No. 20100467	CLASSIFICATION
	PBS PATH
CHECKED BY: N. LUTHULI	APPROVED BY:
	Q. CAI Pr.Eng No. 960388
CREATED BY: S. GOVENDER	DATE: 07/02/2020
	SCALE: AS SHOWN
ESKOM HOLDINGS SOC LTD REG No 2002/019527/30	

KRIEL POWER STATION
STRUCTURAL STEEL DRAWING
WASTE OIL STORAGE FACILITY
REINFORCEMENT DETAILS AND
BENDING SCHEDULE