

C3. SCOPE OF WORK

1. DESCRIPTION OF THE WORKS

1.1 Employer's objectives

The employer's objective is to complete the construction of Mt Ayliff Multi-Purpose Centre and landscape the surrounding areas so that it is accessible and safe occupancy for its intended use.

1.2 Overview of the works

The Phase 5 of the project consists of the following:

Description	Scope
Repairs to existing Concrete palisade fence	100 m
Tiling of External Floors	180 m ²
Tiling of Internal Floors	200 m ²
Epoxy paint of Multi-purpose hall and Play Courts Markings	1000 m ²
Installation of goal posts, nets and net posts	Provisional
Cast Insitu Concrete Paving of Walkways	200 m ²
Concrete apron slabs	60 m ²
Concrete stormwater open channels	135 m
110mm diameter PVC connector sewer pipeline	1.00 km
1.5m wide swimming pool access ramp	50 m
Installation of steel structure of general internal grandstand	2 No. Off
Installation of steel structure of VIP internal grandstand	1. No. off
Minor earthworks and general site landscaping	1 500 m ²
Top soil and grassing	1 500 m ²

1.3 Extent of the works

The extent of works and the configuration of Multi-Purpose Centre has been presented in the Site Layout Drawing and building specific construction drawings, which are attached to this tender document.

1.4 Location of the works

Mt Ayliff Multi-Purpose Centre is situated in EmaXesibeni Town within the Umzimvubu Local Municipality at coordinates -30.8071833 ; 29.3731790 in Ward 28.

1.5 Temporary works

There are no temporary works envisaged by the employer. However, if the contractor feels the need for temporary works based on his/her construction methodology; all such works erected will be removed completely by the contractor upon completion of permanent works.

2. ENGINEERING

2.1 Design services and activities matrix

2.2 Employer's design

All the concrete paving, brickwork and associated foundations, grand stands steel structures were designed as per the drawings. All the designs to be used are a property of the employer.

2.3 Employer's design

The contractor will not be responsible for any design, unless he/she prefers alternative design of grand stand structure by which shop drawings shall be required to be submitted to the Engineer for approval.

2.4 Drawings

Tender drawings for all works are included in Part **C5** of this document.

2.5 Design Procedures

The contractor will not be responsible for any design. Special procedures or requirements i.e. environmental, record keeping, will be discussed with the appointed contractor on progress meetings.

3 PROCUREMENT

3.1 Preferential procurement procedures

The Bid Procedures will be as outlined in this document.

4. CONSTRUCTION

4.1 Reinstatement of services and structures damaged during construction

Any damage caused by the contractor to the existing services and structures, must be repaired by the contractor from his expense.

4.2 Site Establishment

4.3.1 Facilities provided by the contractor

The contractor is expected to establish a construction camp and office facility, for the fulfilment of the contract. Site establishment facilities to be removed after the completion of the project.

4.3.2 Site usage

The contractor must strictly use the working area provided or shown by the Principal Agent. The contractor and the principal agent must prepare the snag list before taking occupation on any facility.

4.3.3 Water for Construction Purposes

The contractor is expected to make means for the provision of water for construction purposes.

5. MANAGEMENT

5.1 Management of the Works

5.1.1 Planning and Programming

The contractor's construction programme should outline the following: resource allocation, time, cash flows, plant, start and finish date, critical path, float, which must be revealed to the Principal Agent for any decision making.

5.1.2 Quality Plans and Control

The contractor must provide the specified material and any changes to be consulted with the employer's agent. All relevant test and inspection to be done.

5.1.3 Recording of weather

The Contractor shall erect an effective rainfall gauge on the site and record the daily rainfall figures in a book. Such book shall be handed to the employer's representative for his signature no later than 12 days after rain that is considered to justify an extension of time occurs.

5.1.4 Format of communication

All formal communication from the relevant stakeholders should be communicated in writing i.e. site instruction etc. The contractor must provide the triple book as a site instruction book.

5.1.5 Management meetings

Monthly progress meetings with relevant stakeholders will be scheduled. Monthly Technical and site progress meetings will be held on Monthly basis, separated by two weeks.

5.1.6 Daily records

All daily activities (people employed, plant and equipment etc) to be recorded in the site diary.

5.1.7 Payment certificate

Payments certificate will be generated based on the actual site measurements. The contractor is expected to contact **Umzimvubu Local Municipality** there have been changes to the banking details.

5.1.8 Extension of Time Due To Disruption By Business Forums or Associations

There will be no extension of time on this contract due to delays caused by disruptions by business forums or any group of business organisations or associations that are forcefully demanding a stake or participation in this project except as provided for below.

Should the Contractor, due to the disruptions caused by business forums or any group of business organisations or associations, resulting in his inability to carry out the Works, not meet the rates of progress as per the programme, the Engineer shall determine the number of days lost due to the disruptions, and deduct same from the number of days of penalty which the Contractor shall pay to the Employer due to non-performance in terms of the contract.

Should the disruptions delay the Contractor's rate of progress on work programmed at the end of the contract, the provisions in the above paragraph shall still apply, but the employer shall have the right to discontinue the work in progress on the date that the contract expires, at his sole discretion, or allow the Contractor to complete the outstanding work after expiry date of contract within the period equal to the number of days lost due to disruptions in respect of the activities affected by the disruptions, as determined by the Engineer, without applying the penalty in terms of Clause 43.1 of Contract Data.

During the execution of the Works, The Engineer's Representative will certify a day lost due to disruptions only if less than 30% of the work force and plant on site could work during that specific working day.

6. OHSA 1993 HEALTH AND SAFETY SPECIFICATION

OHS 1 SCOPE

This specification covers the health and safety requirements to be met by the Contractor to ensure a continued safe and healthy environment for all workers, employees and subcontractors under his control and for all other persons entering the site of works.

This specification shall be read with the Occupational Health and Safety Act (Act No 85 and amendment Act No 181) 1993, and the corresponding Construction Regulations 2003, and all other safety codes and specifications referred to in the said Construction Regulations.

In terms of the OHSA Agreement in Section C1.5 of the Contract document, the status of the Contractor as mandatory to the Employer (client) is that of an employer in his own right, responsible to comply with all provisions of OHSA 1993 and the Construction Regulations 2003.

This specification and the Contractor's own Health and Safety Plan as well as the Construction Regulations 2003, shall be displayed on site or made available for inspection by all workers, employees, inspectors and any other persons entering the site of works.

The following aspects of this project carry the risk of possible injuries,

- People becoming complacent and not keeping an eye on the operation being conducted
- People standing out of view of the driver of a construction machine
- People "catching" a lift on the machine and falling under the machine after it hits a hump
- Trying to do a task with the machine for which it is not designed
- Poor visibility while performing tasks that generate excessive dust
- Failure to provide the pedestrians and traffic a safe passage away from the plant processing the layer works and surfacing operations.
- Risks of not wearing proper safety equipment when working with bitumen and cement.
- Failure to provide means of access for emergency vehicles
- Risks related to people smoking near potentially harmful gasses
- Failure to perform visual inspections on all surfacing equipment
- Non-conformance to specifications with regards to fitting all construction vehicles with reverse alarms
- Operation and maintenance on the site of heavy civil engineering plant such as excavators, bulldozers, front end loaders, tippers, TLBs, compaction equipment, rock breaking plant, water pumps, concrete mixers, ready mixed concrete trucks, batch plants, cranes, concrete pumps, compressors, pneumatic tools, generators, etc.
- Use on the site of power tools and hand tools.
- Handling of materials such as scaffolding, formwork, timber planks, steel wire, reinforcement, cement bags, concrete materials and hand stone.
- Storage and handling of flammable materials such as fuels, oils, adhesives, and painting and cleaning products including bituminous paint.
- Presence of open excavations for the manholes and storm water pipe trenches.
- Lifting and lowering of concrete pipes
- Possible need for boatswain's chairs Risks related to general safety and security on site.

Additional risks may arise from specific methods of construction selected by the Contractor which are not necessarily covered in the above.

OHS 2 DEFINITIONS

For the purpose of this contract the following shall apply:

- (a) **Employer**” where used in the contract documents and in this specification, means the Employer as defined in the General Conditions of Contract 2015 and it shall have the exact same meaning as “**client**” as defined in the Construction Regulations 2003. “**Employer**” and “**client**” are therefore interchangeable and shall be read in the context of the relevant document.
- (b) “**Contractor**” wherever used in the contract documents and in this specification, shall have the same meaning as “**Contractor**” as defined in the General Conditions of Contract 2015.

In this specification the terms “**principal contractor**” and “**contractor**” are replaced with “**Contractor**” and “**subcontractor**” respectively.

For the purpose of this contract the **Contractor** will, in terms of OHSA 1993, be the mandatary, without derogating from his status as an employer in his own right.

- (c) “**Engineer**” where used in this specification, means the Engineer as defined in the General Conditions of Contract 2015. In terms of the Construction Regulations the Engineer may act as agent on behalf of the Employer (the client as defined in the Construction Regulations).

OHS 3 TENDERS

This Health and Safety Specification forms an integral part of the Contract and Tenderers are required to use it during the tender phase for pricing the preparation of a project specific Health and Safety Plan prior to commencing any work and for pricing the costs of ensuring compliance thereto during construction. Tenderers must forward a copy of this Specification to all other persons or organisations that may be submitting prices to the Tenderer during the tender stage to enable them to include the cost of preparing their own Health and Safety Plan, relevant to their particular operation, and for compliance with the Health and Safety requirements during construction. Payment items are included in the ‘Schedule of Quantities’ for compliance with the ‘Occupational Health and Safety Act’ and with this Specification.

Tenderers are required to complete Form J, ‘Contractor’s Health and Safety Declaration’ of T2.2, ‘Returnable Schedules required for Tender Evaluation Purposes’.

Failure to submit the foregoing with his tender and/or to provide realistic rates for relevant payment items, will lead to the conclusion that the Contractor will not be able to carry out the work under the contract safely and in accordance with the Construction Regulations.

OHS4 NOTIFICATION OF COMMENCEMENT OF CONSTRUCTION WORK

After award of the contract, but before commencement of construction work, the Contractor shall, in terms of Regulation 3, notify the Provincial Director of the Department of Labour in writing if the following work is involved:

- (a) the demolition of structures and dismantling of fixed plant of height of 3,0m or more;
- (b) the use of explosives;
- (c) construction work that will exceed 30 days or 300 person-days;
- (d) excavation work deeper than 1,0m; or
- (e) working at a height greater than 3,0m above ground or landings.

The notification must be done in the form of the pro forma included as Annexure A to this Specification. A copy of the notification form must be kept on site, available for inspection by inspectors, Employer, Engineer, employees and persons on site.

OHS 5 HEALTH AND SAFETY PLAN

Before commencement of any construction work, the Contractor shall prepare a project specific Health and Safety Plan to comply with the requirements of Construction Regulation 4(1)(a) and in compliance with this Health and Safety Specification. This must include a risk assessment performed and recorded in writing by a competent person (refer to Regulation 7 of the Construction Regulations 2003).

The risk assessment shall identify and evaluate the risks and hazards that may be expected during the execution of the work under the contract, and it shall include a documented plan of safe work procedures to mitigate, reduce or control the risks and hazards identified.

The Health and Safety Plan shall be available on site for inspection by inspectors, Employer, Engineer, subcontractors, employees, trade unions and health and safety committee members, and must be monitored and reviewed periodically by the Contractor.

OHS 6 APPOINTMENT OF EMPLOYEES AND SUBCONTRACTORS

OHS 6.1 Health and Safety Plan

The Contractor shall appoint in writing his employees and any subcontractors to be employed on the contract, and he shall provide them with a copy of his documented Health and Safety Plan, or relevant sections thereof. The Contractor shall ensure that all subcontractors and employees are committed to the implementation of his Safety Plan.

OHS 6.2 Health and safety induction training

The Contractor shall ensure that all employees under his control, including subcontractors and their employees, undergo a health and safety induction training course by a competent person before commencement of construction work. No visitor or other person shall be allowed or permitted to enter the site of the works unless such person has undergone health and safety training pertaining to hazards prevalent on site.

The Contractor shall ensure that every employee on site shall at all times be in possession of proof of the health and safety induction training issued by a competent person prior to commencement of construction work.

OHS 7 APPOINTMENT OF SAFETY PERSONNEL

OHS 7.1 Construction Supervisor

The Contractor shall appoint a full-time **Construction Supervisor** with the duty of supervising the performance of the construction work.

He may also have to appoint one or more competent employees to assist the construction supervisor where justified by the scope and complexity of the works.

OHS 7.2 Construction safety officer

Taking into consideration the size of the project and the hazards or dangers that can be expected, the Contractor shall appoint in writing a full-time or part-time **Construction Safety Officer** if so decided by the Inspector of the Department of Labour. The Safety Officer shall have the necessary competence and resources to perform his duties diligently.

Provision shall be made by the Contractor in his rates, to cover the cost of this dedicated construction safety officer appointed after award of the contract.

OHS 7.3 Health and safety representatives

In terms of **Sections 17 and 18 of the Act (OHSA 1993)** the Contractor, being the Employer in terms of the Act for the execution of the contract, shall appoint a **health and safety representative** whenever he has more than 20 employees in his employment on the site of the works. The health and safety representative must be selected from employees who are employed in a full-time capacity at a specific workplace.

The number of health and safety representatives for a workplace shall be at least one for every 50 employees.

The function of health and safety representative(s) will be to review the effectiveness of health and safety measures, to identify potential hazards and major incidents, to examine causes of incidents (in collaboration with his employer, the Contractor), to investigate complaints by employees relating to health and safety at work, to make representations to the employer (Contractor) or inspector on general matters affecting the health and safety of employees, to inspect the workplace, plant, machinery, etc. on a regular basis, to participate in consultations with inspectors and to attend meetings of the health and safety committee.

OHS 7.4 Health and safety committee

In terms of **Section 19 of the Act (OHSA 1993)**, the Contractor (as employer) shall establish one or more **health and safety committee(s)** where there are two or more health and safety representatives at a workplace. The persons selected by the Contractor to serve on the committee shall be designated in writing.

The function of the health and safety committee shall be to hold meetings at regular intervals but at least once every three months, to review the health and safety measures on the contract, to discuss incidents related to health and safety with the Contractor and the inspector, to make recommendations regarding health and safety to the Contractor and to keep record of recommendations and reports made by the committee.

OHS 7.5 Competent persons

In accordance with the Construction Regulations the Contractor has to appoint in writing **competent persons** responsible for supervising construction work in each of the following work situations that may be expected on the site of the works.

- (a) Risk assessment and induction training as described in Regulation 7 of the Construction Regulations;
- (b) Fall protection as described in Regulation 8;
- (c) Formwork and support work as described in Regulation 10;
- (d) Excavation work as described in Regulation 11;
- (e) Demolition work as described in Regulation 12;
- (f) Scaffolding work as described in Regulation 14;
- (g) Suspended platform operations as described in Regulation 15;
- (h) Material hoists as described in Regulation 17;
- (i) Batch plant operations as described in Regulation 18;
- (j) Explosive powered tools as described in Regulation 19;
- (k) Cranes as described in Regulation 20;
- (l) Construction vehicle and mobile plant inspections on a daily basis by a competent person as described in Regulation 21(1);

- (m) Control of all temporary electrical installations on the construction site as described in Regulation 22;
- (n) Stacking and storage on construction sites as described in Regulation 26; and
- (o) Inspections of fire equipment as described in Regulation 27.

A competent person may be appointed for more than one part of the construction work with the understanding that the person must be suitably qualified and able to supervise at the same time the construction work on all the work situations for which he has been appointed.

The appointment of competent persons to supervise parts of the construction work does not relieve the Contractor from any of his responsibilities to comply with **all** requirements of the Construction Regulations.

OHS 8 RECORDS AND REGISTERS

In accordance with the Construction Regulations the Contractor is bound to keep records and registers related to health and safety on site for periodic inspection by inspectors, the Engineer, the Employer, trade union officials, subcontractors and employees. The following records and registers must be kept on site and shall be available for inspection at all times.

- (p) A copy of the OHSA 1993 Construction Regulations 2003;
- (q) A copy of this Health and Safety Specification;
- (r) A copy of the Contractor's Health and Safety Plan (Regulation 4);
- (s) A copy of the Notification of Construction Work (Regulation 3);
- (t) A health and safety file in terms of Regulation 5(7) with inputs by the Construction Safety Officer (Regulation 6(7));
- (u) A copy of the risk assessment described in Regulation 7;
- (v) A fall protection plan and the corresponding records of evaluation and training of employees working from elevated positions as described in Regulation 8;
- (w) Drawings pertaining to the design of structures (Regulation 9(3)) and formwork and support work structures (Regulation 10(d)) must be kept on site;
- (x) Pronouncement of the safety of excavations must be recorded in a register to be kept on site (Regulation 11(3)(h));
- (y) A copy of the certificate of the system design for suspended platforms (Regulation 15(3));
- (z) A notice must be affixed around the bases of the towers of material hoists to indicate the maximum mass load which may be carried at any one time by material hoists (Regulation 17(5));
- (aa) Maintenance records of material hoists and inspection results must be kept in a record book to be kept on site (Regulation 17(8));
- (bb) A record of any repairs to or maintenance of a batch plant must be kept on site (Regulation 18(9));
- (cc) A warning notice must be displayed in a conspicuous manner when and wherever an explosive powered tool is used (Regulation 19(2));
- (dd) A register for recording of findings by the competent person appointed to inspect construction vehicles and mobile plant (Regulation 21(1)(j)).

OHS 9 CONTRACTOR'S RESPONSIBILITIES

For this contract the Contractor will be the mandatary of the Employer (Client), as defined in the Act (OHSA 1993), which means that the Contractor has the status of employer in his own right in respect of the contract. The Contractor is therefore responsible for all the duties and obligations of an employer as set out in the Act (OHSA 1993) and the Construction Regulations 2003.

Before commencement of work under the contract, the Contractor shall enter into an agreement with the Employer (Client) in terms of C1.5 'Agreement in terms of Section 37(2) of the Occupational Health and Safety Act No. 85 of 1993', to confirm his status as mandatary (employer) for the contract under consideration.

The Contractor is advised in his own interest to make a careful study of the Act and the Construction Regulations as ignorance of the Act and the Regulations will not be accepted in any proceedings related to non-conformance to the Act and the Regulations.

OHS 10 MEASUREMENT AND PAYMENT

OHS 10.1 Principles

It is a condition of this contract that Contractors who submit tenders for this contract shall make provision in their tenders for the cost of all health and safety measures required during the construction process.

(a) Safety personnel

The Construction Supervisor, the Construction Safety Officer, Health and Safety Representatives, Health and Safety Committee and Competent Persons referred to in clause E7 paragraphs E7.1 to E7.5 above shall be members of the Contractor's personnel, and no additional payment will be made for the appointment of such safety personnel.

(b) Records and Registers

The keeping of health and safety-related records and registers as described in clause E8 above is regarded as a normal duty of the Contractor for which payment is deemed to be included in the Contractor's tendered rates and prices, and for which no additional payment will be considered except to the extent provided in item B13.06 of the Schedule of Quantities

ANNEXURE A (to H&S specification)

To : The Provincial Director, Department of Labour,

ANNEXURE A

OCCUPATIONAL HEALTH AND SAFETY ACT, 1993

Regulation 3 of the Construction Regulations, 2003

NOTIFICATION OF CONSTRUCTION WORK

1. (a) Name and postal address of principal contractor:
.....
- (b) Name and telephone number of principal contractor's contact person:
.....
2. Principal contractor's compensation registration number:
.....
3. (a) Name and postal address of client:
.....
.....
- (b) Name and telephone number of client's contact person or agent:
.....
4. (a) Name and postal address of designer(s) for the project:
.....
.....
- (b) Name and telephone number of designer's contact person:
.....
5. Name and telephone number of principal contractor's construction supervisor on site
appointed in terms of regulations 6(1):
.....

6. Name/s of principal contractor's subordinate supervisors on site appointed in terms of regulation 6(2):

.....
.....

7. Exact physical address of the construction site or site office:

.....
.....

8. Nature of the construction work:

.....
.....
.....

9. Expected commencement date:

.....

10. Expected completion date:

.....

11. Estimated maximum number of persons on the construction site:

.....

12. Planned number of contractors on the construction site accountable to principal contractor:

.....

13. Name(s) of contractors already chosen:

.....
.....
.....

ANNEXURE A - Continued

.....
Principal Contractor

.....
Date

.....
Client

.....
Date

- THIS DOCUMENT IS TO BE FORWARDED TO THE OFFICE OF THE DEPARTMENT OF LABOUR **PRIOR TO COMMENCEMENT** OF WORK ON SITE.
- **ALL PRINCIPAL CONTRACTORS** THAT QUALIFY TO NOTIFY MUST DO SO EVEN IF ANOTHER PRINCIPAL CONTRACTOR ON THE SAME SITE HAD DONE SO PRIOR TO THE COMMENCEMENT OF WORK.

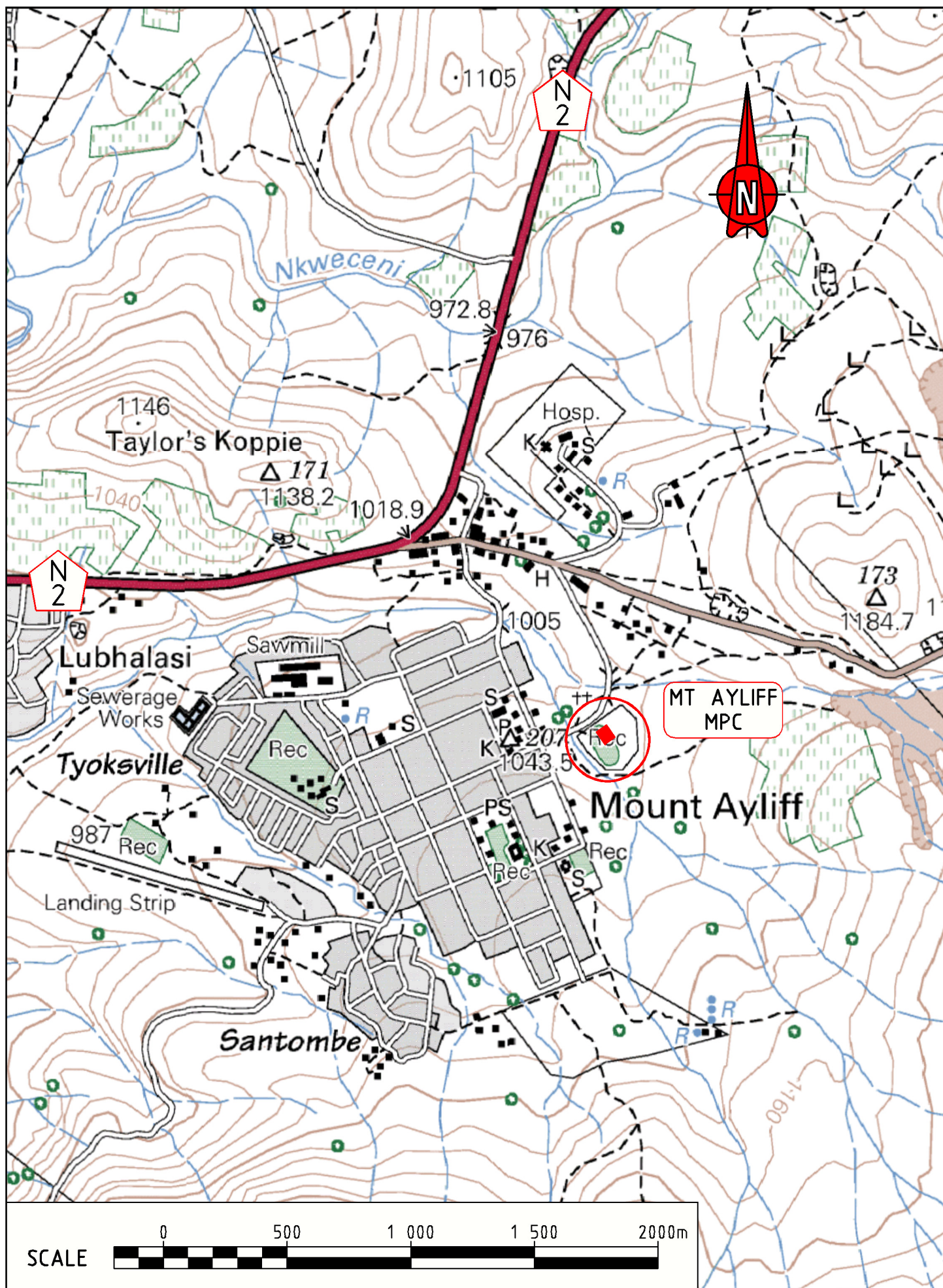
C4.SITE INFORMATION

C4.1 Locality Plan

C4.2 Photographic View of Existing Building and Site Condition

C4.3 Example of Contract Signboard Details

C4.1 Locality Plan



C4.2 Photographic View of Existing Building and Site Condition



Rear View of the MPC : Construction of ramp for disabled is required to provide access to the swimming. Construction of concrete paving of walkways, concrete drains and general landscaping around the building structure is required.



Side View of the MPC Building. Construction of concrete paving of walkways, concrete drains and general landscaping around the building structure is required.



Front View of the MPC Building. Construction of concrete drains and general landscaping around the building structure is required.



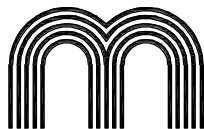




Side View of the MPC Building. Construction of concrete paving of walkways, concrete drains and general landscaping around the building structure is required

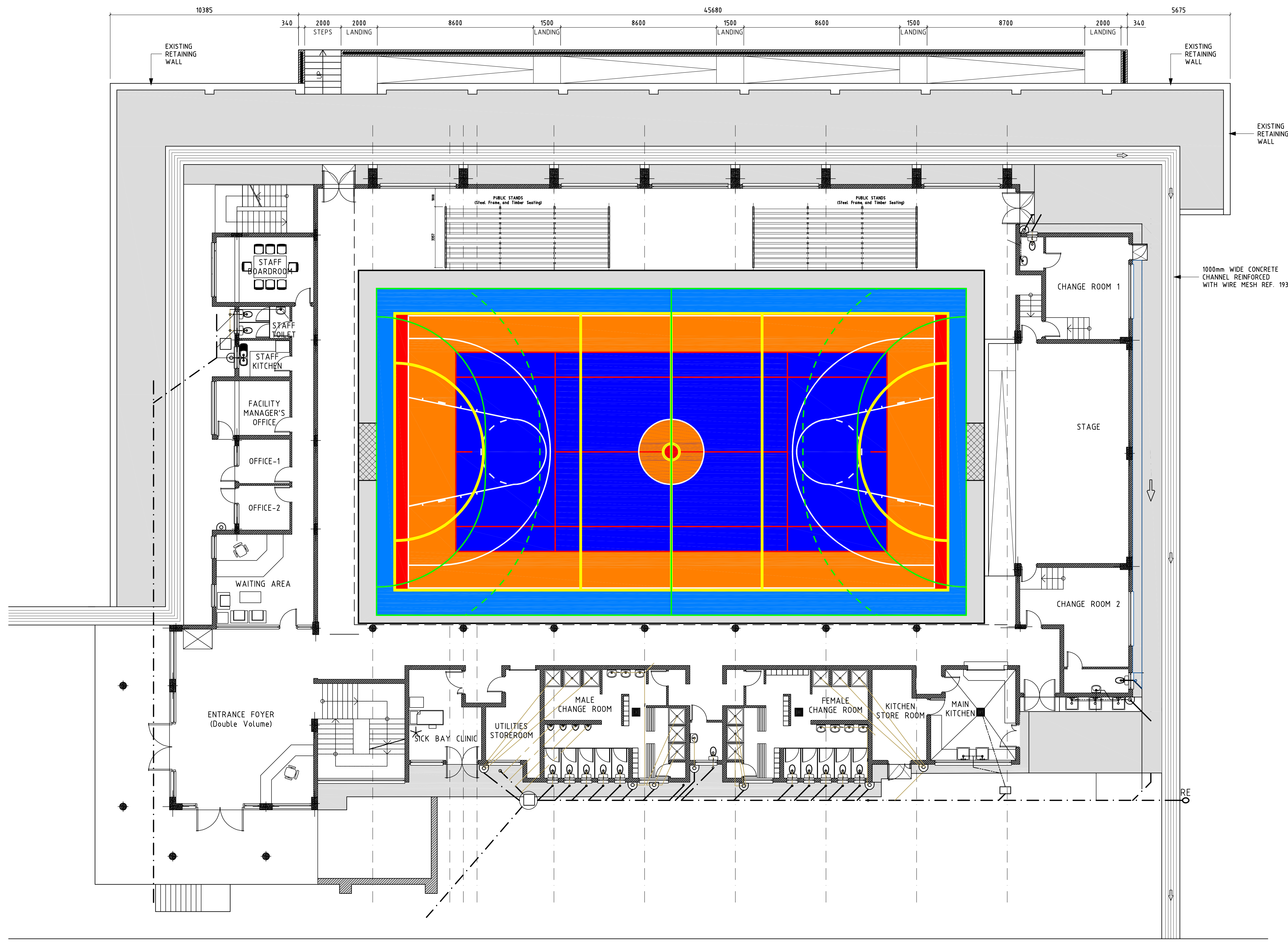


Side Front View of the MPC Building. Construction of concrete paving of walkways, concrete drains and general landscaping around the building structure is required

C4.3 Example of Contract Signboard Details

		3300				
		75	520	75	75	
		2430			75	
		25				
3255	25	<div data-bbox="308 544 507 719">  <p>UMZIMVUBU LOCAL MUNICIPALITY</p> </div> <div data-bbox="579 557 1437 680"> <p>MT AYLIFF MULTI-PURPOSE CENTRE - PHASE 5</p> <p>CONTRACT No. : UMZ/2022-23/INFRA/CAP/29</p> </div> <div data-bbox="303 743 1286 873"> <p>CLIENT:</p> <p>UMZIMVUBU LOCAL MUNICIPALITY</p> </div> <div data-bbox="308 927 528 1095">  </div> <div data-bbox="557 916 1318 1124"> <p>FUNDING AGENT:</p> <p>COGTA</p> <p>PROVINCE OF THE EASTERN CAPE</p> </div> <div data-bbox="303 1173 507 1301">  </div> <div data-bbox="557 1167 1390 1305"> <p>CONSULTING ENGINEERS:</p> <p>MATAYA SPECIALIST ENGINEERS</p> </div> <div data-bbox="303 1350 507 1476"> <p>(Logo)</p> </div> <div data-bbox="557 1346 1176 1485"> <p>CONTRACTOR:</p> <p>(NAME OF CONTRACTOR)</p> </div> <div data-bbox="308 1514 438 1680">  </div> <div data-bbox="458 1514 772 1680"> <p>public works & infrastructure</p> <p>Department: Public Works and Infrastructure REPUBLIC OF SOUTH AFRICA</p> </div> <div data-bbox="874 1518 1295 1684">  <p>EXPANDED PUBLIC WORKS PROGRAMME CONTRIBUTING TO A NATION AT WORK</p> </div>				
	75					
	1150					
	520					
	75					
	100					
	75					
	130					
	150					
	100					
	320					
	150					
	320					
	120					
	100					
150						
320						
120						
100						
320						
100						
445						
75						
25						

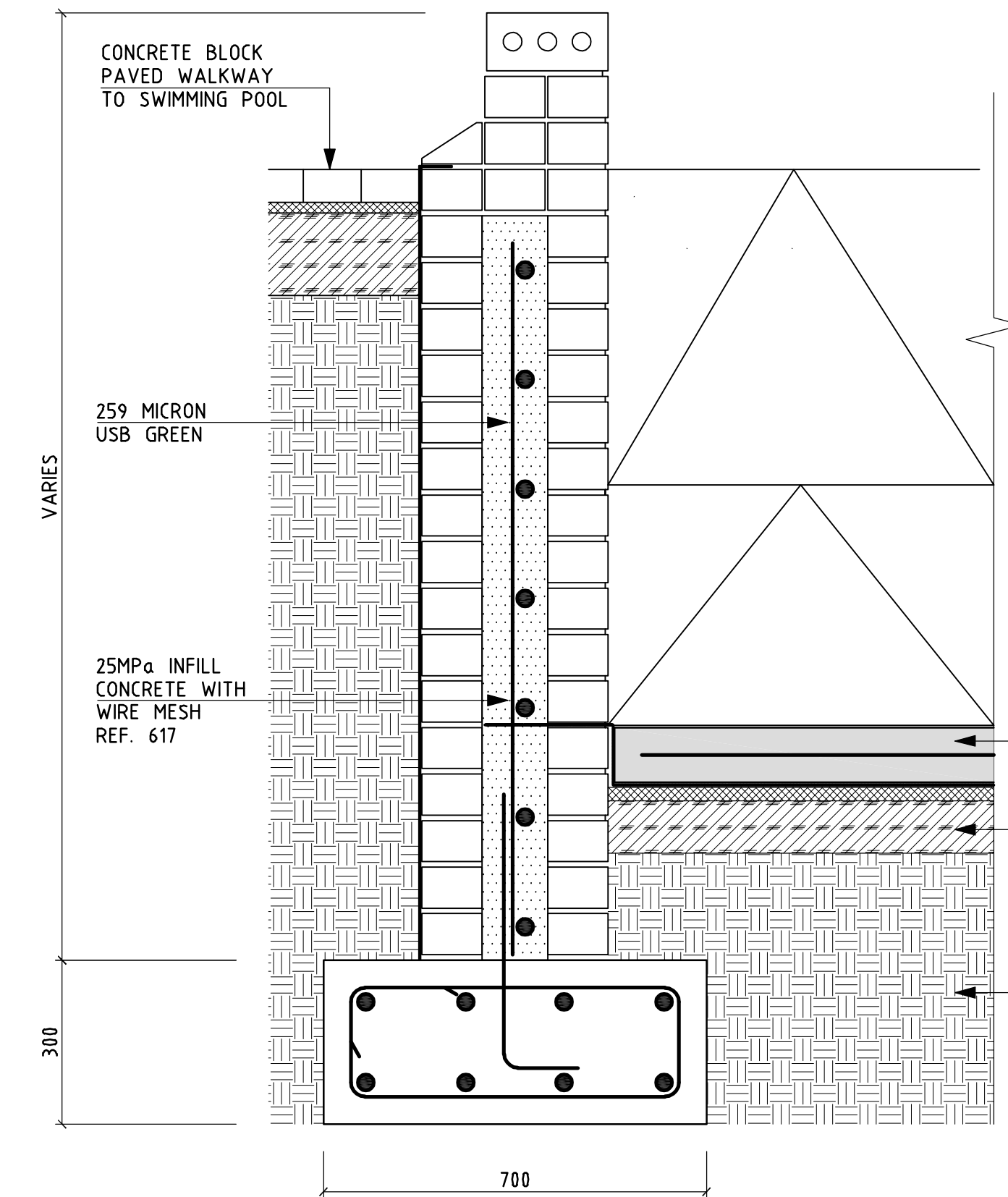
C3.DRAWINGS



CONCRETE BLOCK PAVING AND RAMPS - LAYOUT PLAN
SCALE 1:100

NOTES: WALL CONSTRUCTION PROCEDURE

FIX WALL REINFORCEMENT AND BUILD UP BRICKWORK MAX. 6 COURSES AT A TIME. ALLOW A MINIMUM PERIOD OF THREE DAYS AFTER CONSTRUCTION OF BRICKWORK THEN PLACE 25 MPa CONCRETE INFILL CONCRETE TO BE SLIGHTLY VIBRATED.



RAMP RETAINING WALL (TYPICAL)
SCALE 1:10

INFILL CONCRETE RETAINING WALL REINFORCEMENT			
TYPE/DIAM	SHAPE	TOTAL NO. OFF	TOTAL QUANTITY
Y12	600	225	180 kg
Y10	300	150	120 kg
Y12	VARIOUS		340 kg
WIRE MESH REF. 617		76 m ²	470 kg

100mm SURFACE ON 259 MICRON USB GREEN DPM OVER 20mm SAND BEDDING REINFORCED WITH WIRE MESH 193

150mm THICK IMPORTED G5 FILL MATERIAL COMPACTED TO 95% MOD AASHTO

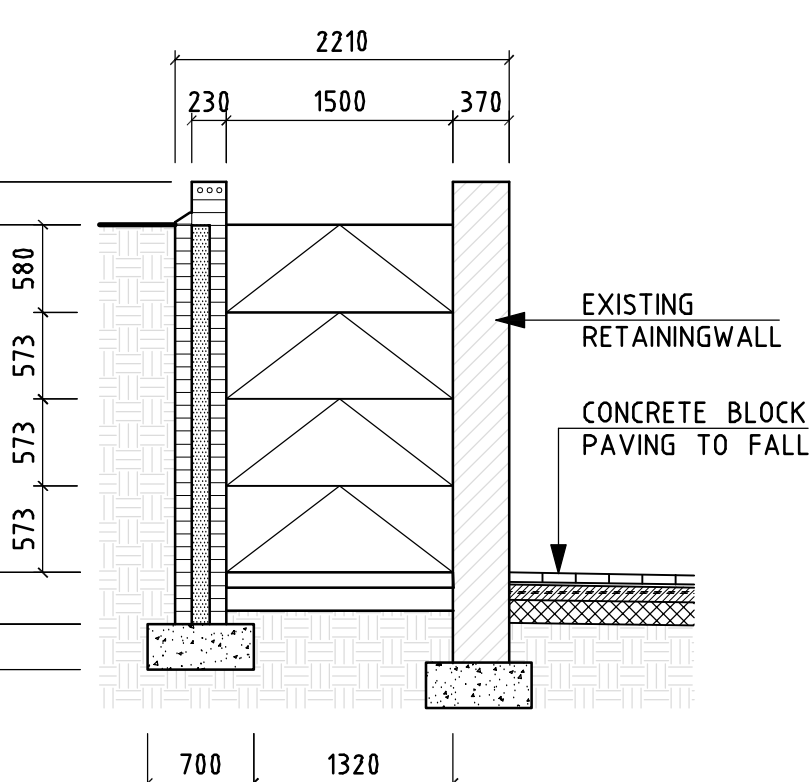
INSITU MATERIAL CUT TO SLOPE AND TO SUIT RAMP

CAST INSITU CONCRETE PAVED WALKWAYS: LAYER SPECIFICATION

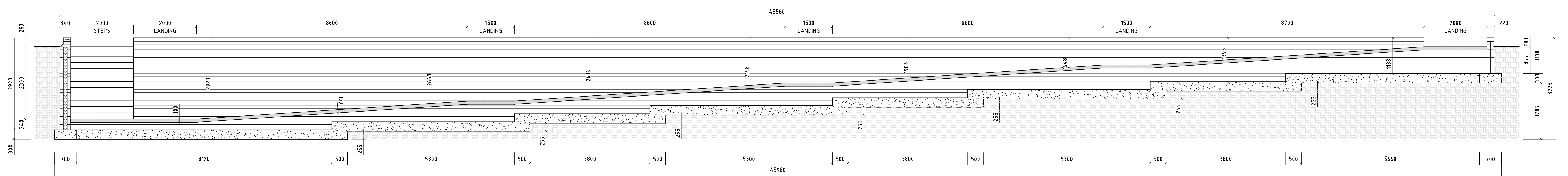
No.	DESCRIPTION	THICKNESS	COMPACTION	
1	20MPa CONCRETE REINFORCED WITH WIRE MESH REF. 193	100 mm	93% MOD ASSHTO	
2	ROADBED PREPARATION	150 mm	90% MOD ASSHTO	

BLOCK PAVED WALKWAYS: LAYER SPECIFICATION



No.	DESCRIPTION	THICKNESS	COMPACTION	
1	CONCRETE PAVING BLOCKS	60 mm	-	
2	SAND BEDDING	25 mm	-	
3	G2 MATERIAL FROM COMMERCIAL SOURCE	100 mm	93% MOD ASSHTO	
4	ROADBED PREPARATION	150 mm	90% MOD ASSHTO	



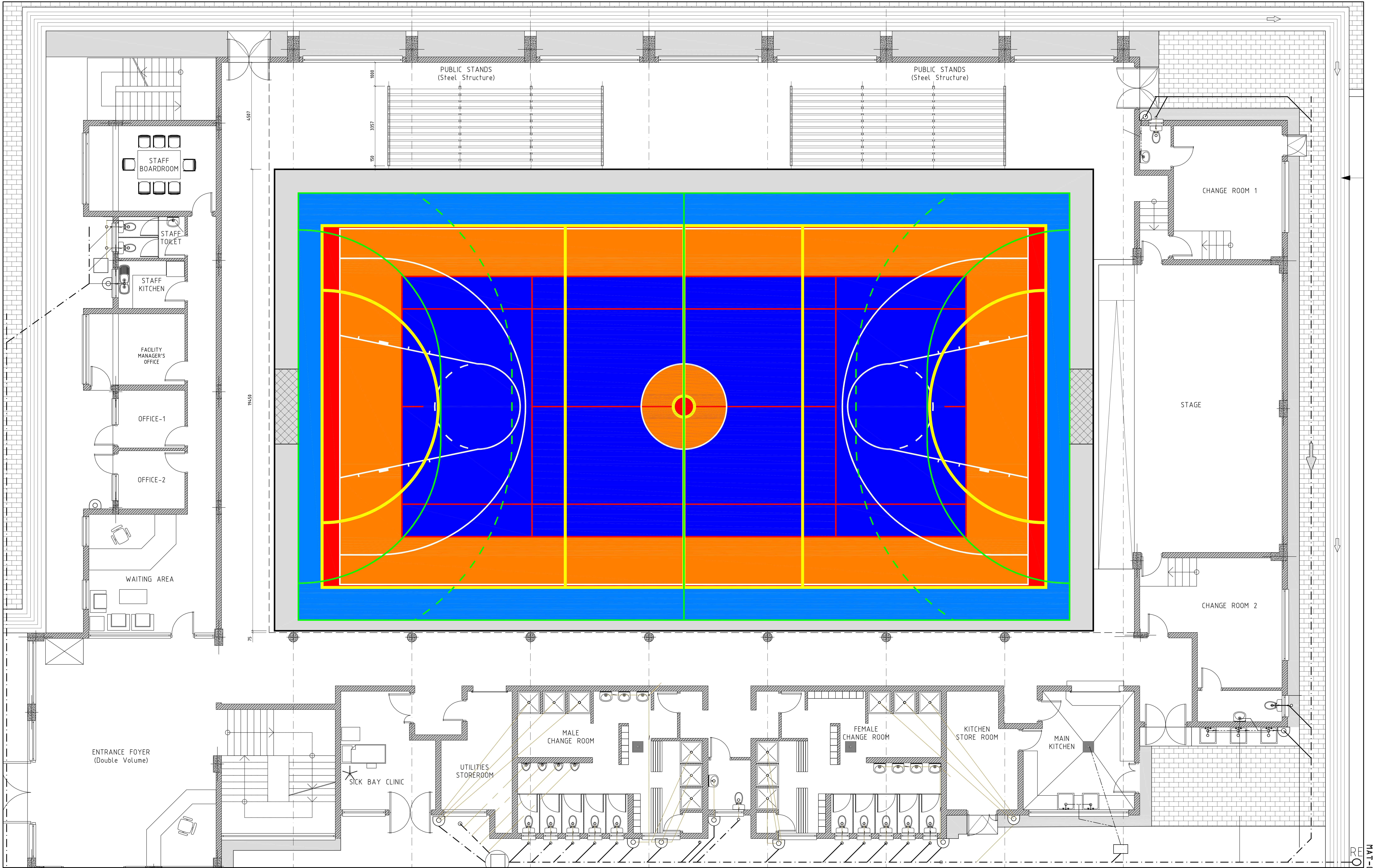
RAMP - CROSS SECTION
SCALE 1:50



RAMP - LONGITUDINAL SECTION
SCALE 1:50

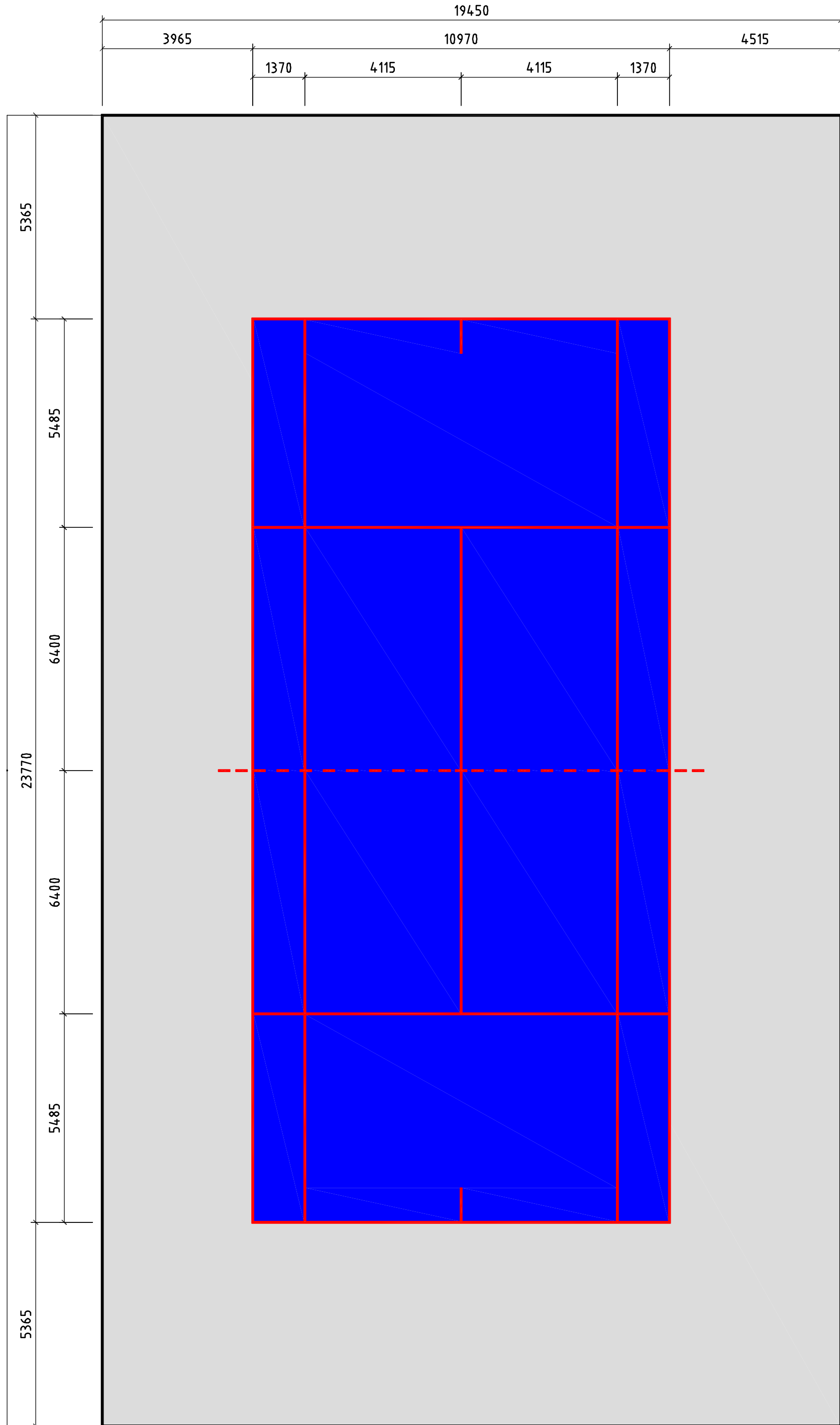
					LIST OF REFERENCE DRAWINGS		AS BUILT		Continued from:-		Designed by:-		EM CHIRWA Pr. Eng		CLIENT:		Designed by:-		PROJECT		CONTRACT No. UMZ/2022-23/INFRA/CAP/29		STAKED km DISTANCE		SHEET 1 OF 1		
							Supervising Engineer		Continued on:-		Checked by:-		EM CHIRWA Pr. Eng		<div> UMZIMVUBU LOCAL MUNICIPALITY</div> <div> MATAYA SPECIALIST ENGINEERS</div> <div>811 MAIN STREET MOUNT FRIERE 5090 TEL: 033 255 8500 FAX: 033 255 0167</div> <div>PRIVATE BAG X9020 KWAJACCA 5090 TEL: 033 255 8500 CELL: 082 714 4444</div> <div> Date</div>		CONSTRUCTION OF MT AYLIFF MPC - PHASE 5		-		PLAN No.:-						
					Date		Cross Section No.-		Drawn by:-		A. NYANGA		PORTION				CONCRETE BLOCK PAVING AND RAMPS		SCALE		AS SHOWN		MAT-036-C-001				
					Supervising Authority		Design Plan No.-		Checked by:-		EM CHIRWA Pr. Eng		Head Infrastructure				LAYOUT PLAN AND SECTIONS										
					DRAWING NO		DESCRIPTION		Survey Plan No.-		Date of approval:-		05-08-2022														
AMENDMENTS																											
T	05-08-2022	ISSUED FOR TENDER		E.M.C	E.M.C																						
Symbol	Date	Description	Checked	Signed																							

MAT-036-001 REV. A

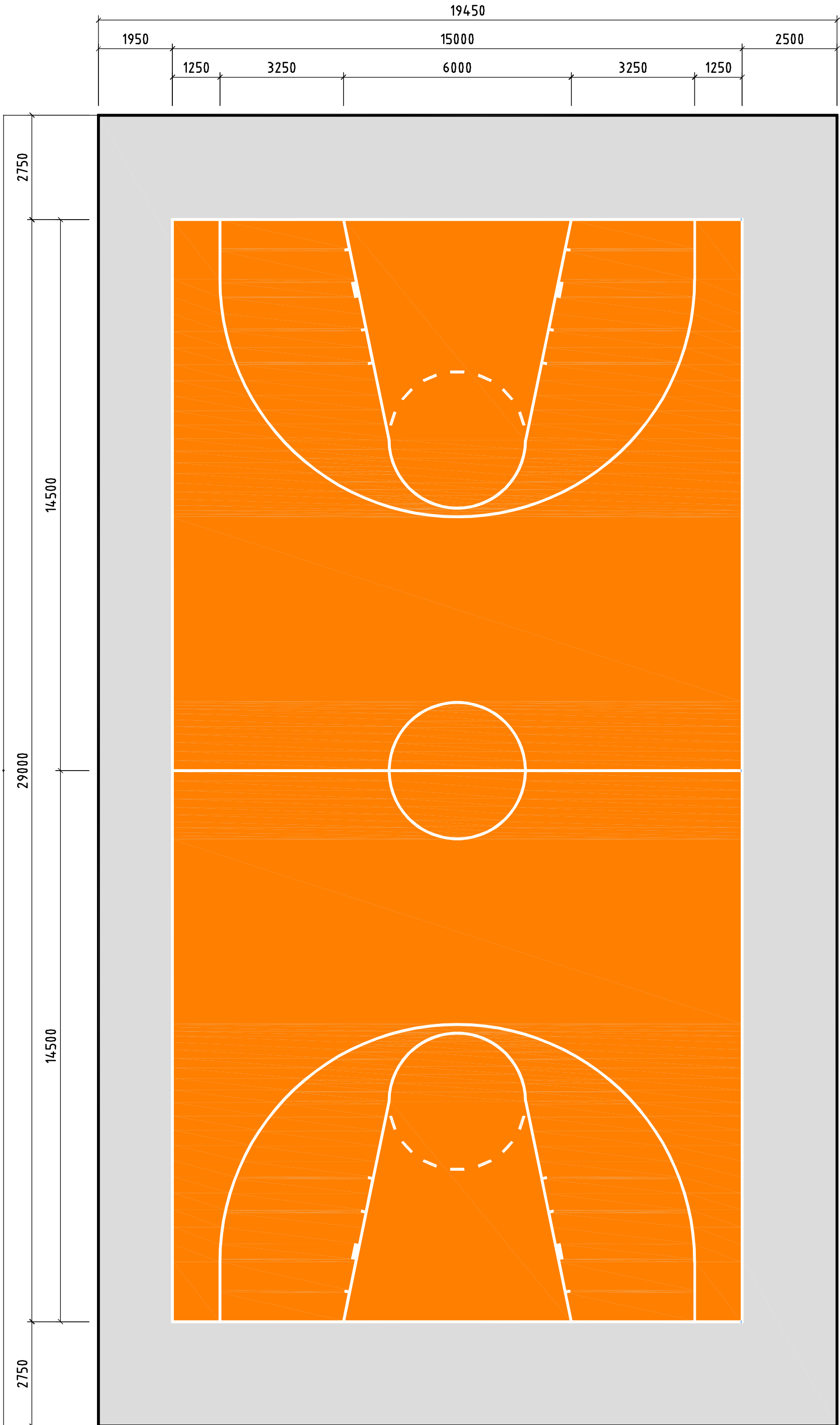


				LIST OF REFERENCE DRAWINGS		AS BUILT		Continued from:-		Designed by:-		CLIENT:		Designed by:-		PROJECT		CONTRACT No. UMZ/2022-23/INFRA/CAP/29		STAKED km DISTANCE		SHEET 1 OF 1 1	
								Continued on:-		Checked by:-		UMZIMVUBU LOCAL MUNICIPALITY PROVINCE OF THE EASTERN CAPE		M MATAYA SPECIALIST ENGINEERS 149 MURRAY ROAD HAYFIELD PETERMARITZBURG 3249 TEL: 039 324 1085 CELL: 082 731 4439		PMU Manager		CONSTRUCTION OF MT AYLIFF MPC - PHASE 5		-			
T 05-08-2022 ISSUED FOR TENDER				Description		Supervising Engineer		Date		A. NYANGA		UMZIMVUBU MUNICIPALITY PROVINCE OF THE EASTERN CAPE		05-08-2022		Head Infrastructure		PORTION		SCALE		PLAN No.:-	
Symbol Date				Checked Signed		Supervising Authority				EM CHIRWA Pr. Eng		PRIVATE BAG X9020 MOUNT FRERE 5200 FAX: 039 255 0167		05-08-2022				COMBI-COURTS LAYOUT PLAN		1 : 50		MAT-036-C-002	
AMENDMENTS						DRAWING NO DESCRIPTION				Survey Plan No.:-		Date of approval:-		05-08-2022									

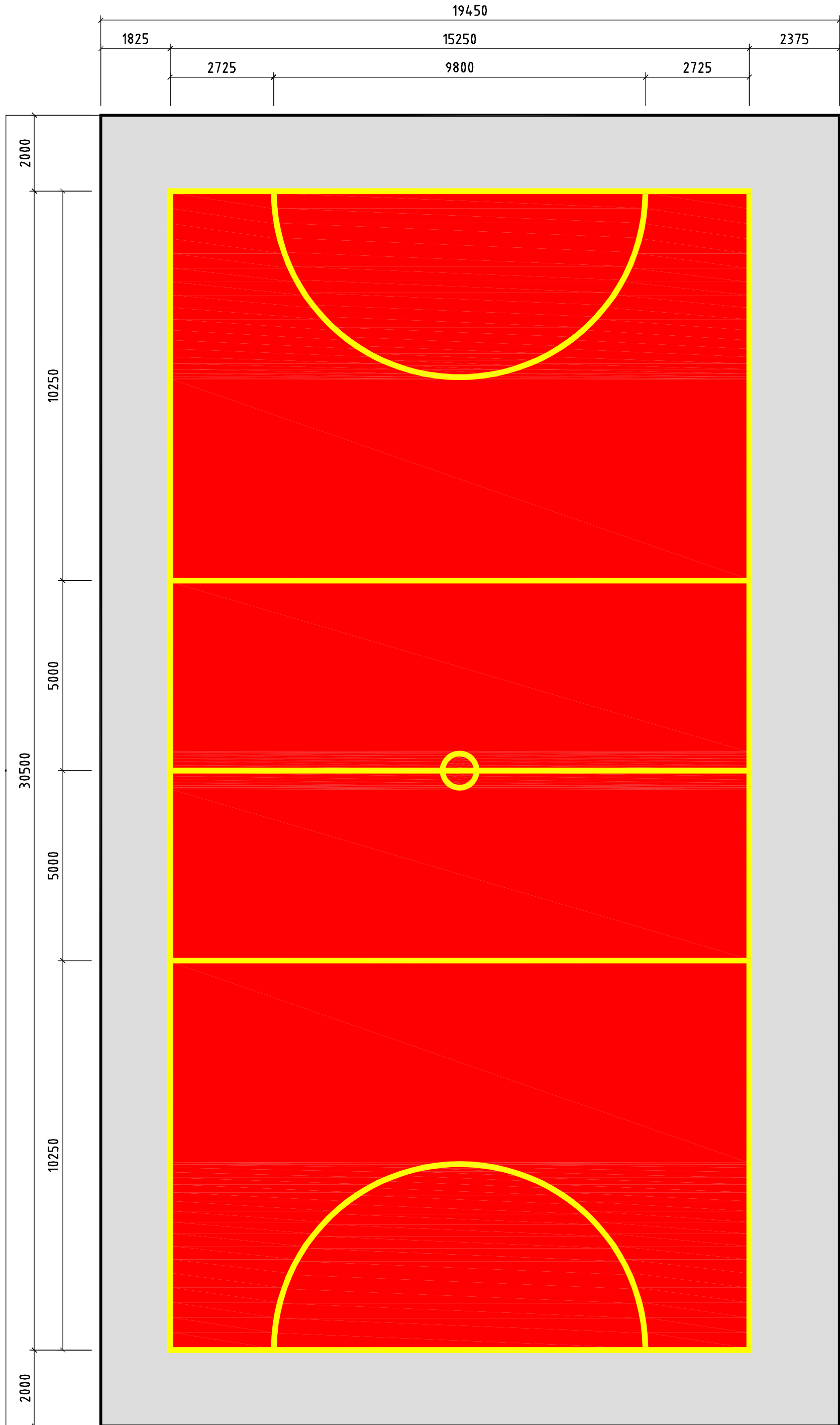
MAT-036-001 REV. A



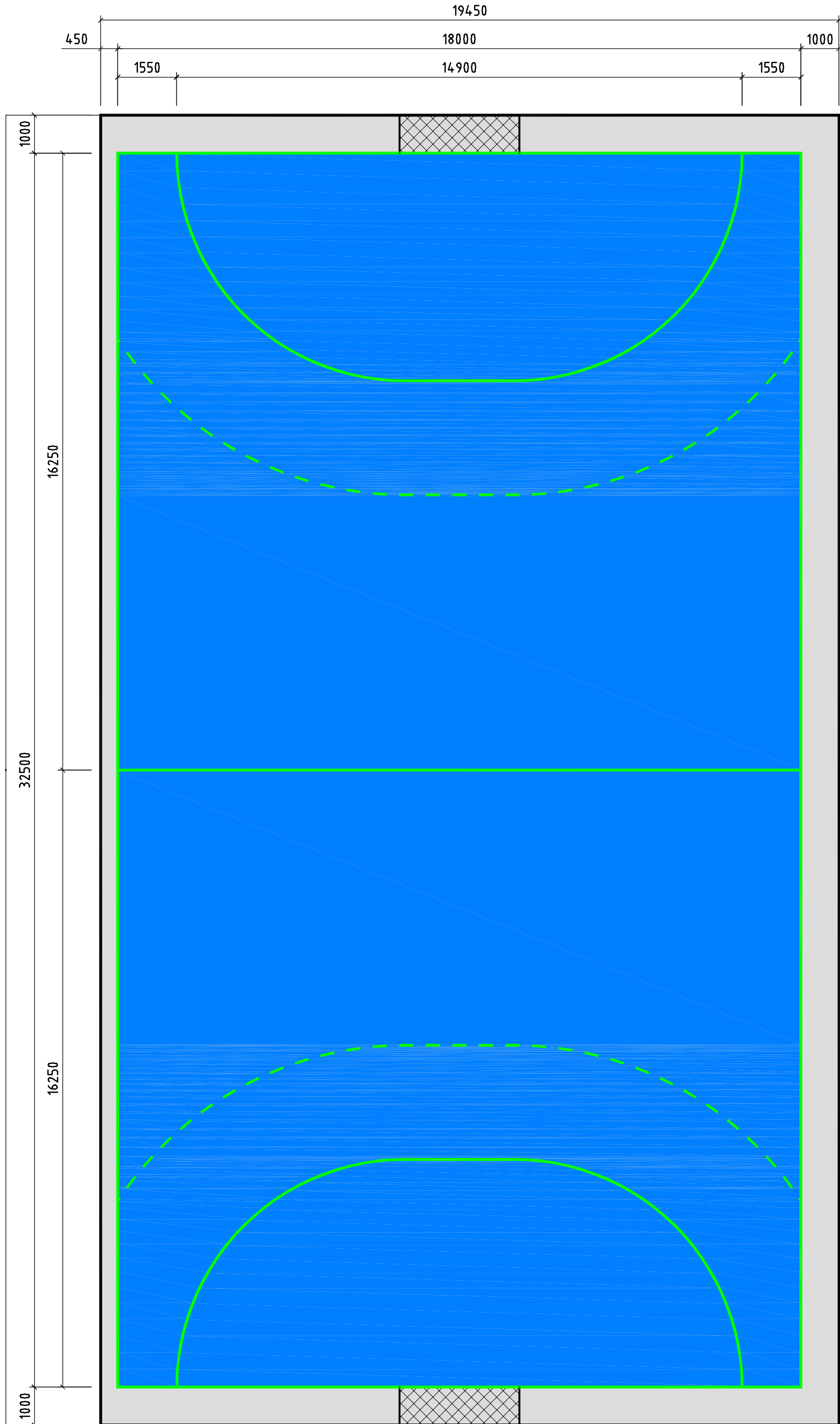
TENNIS COURT





BASKETBALL COURT

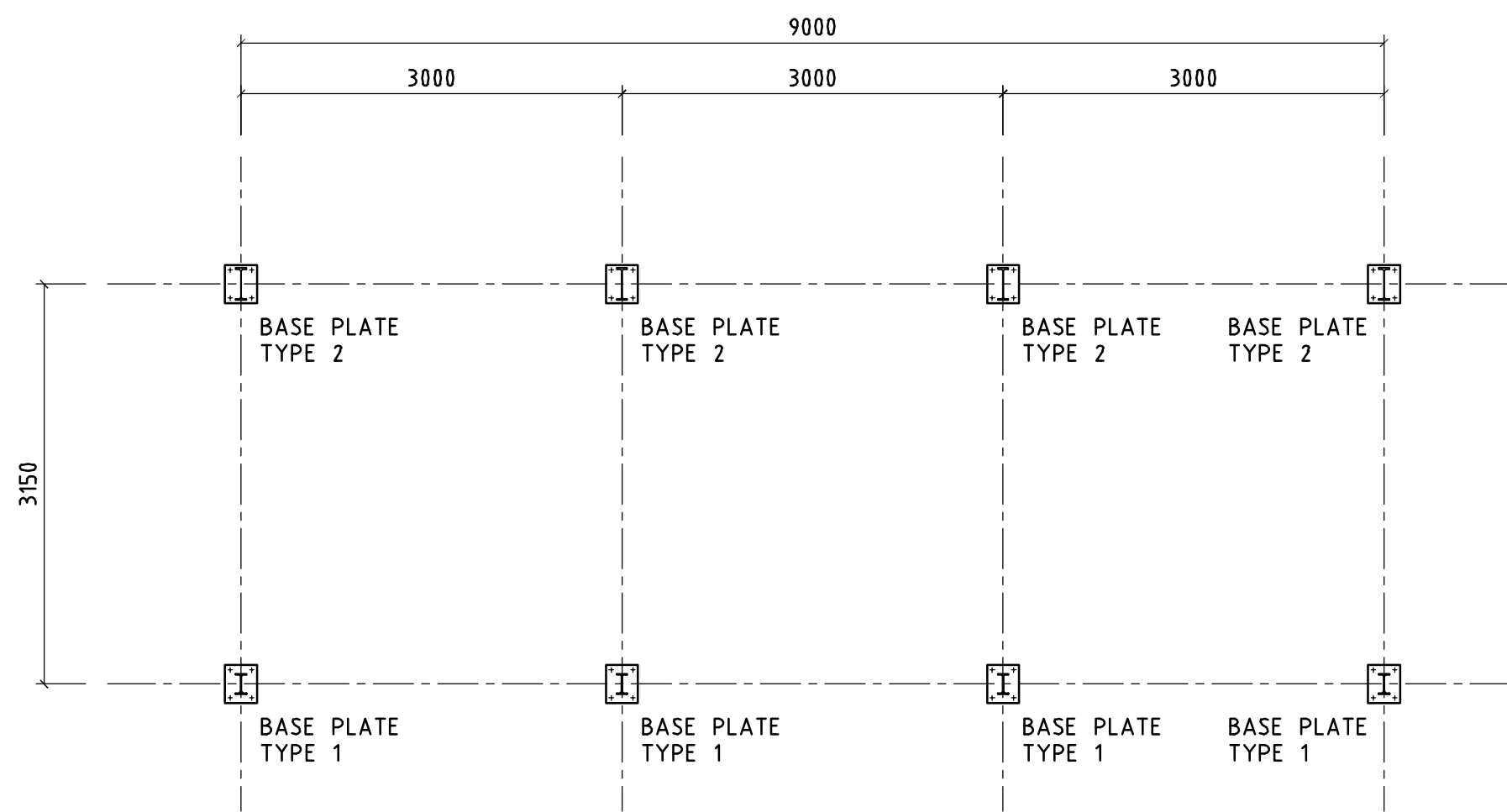


NETBALL COURT

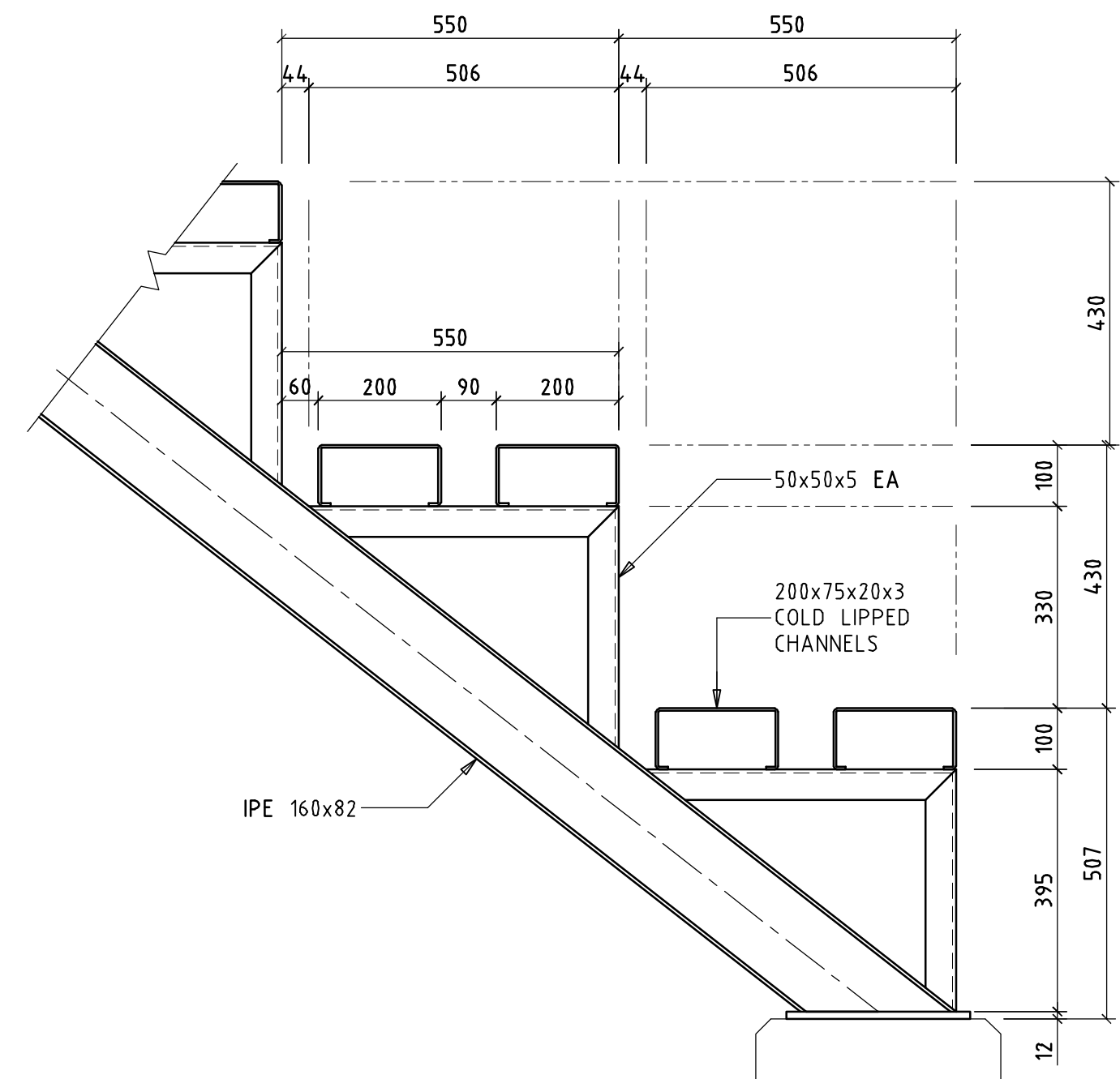


HANDBALL COURT

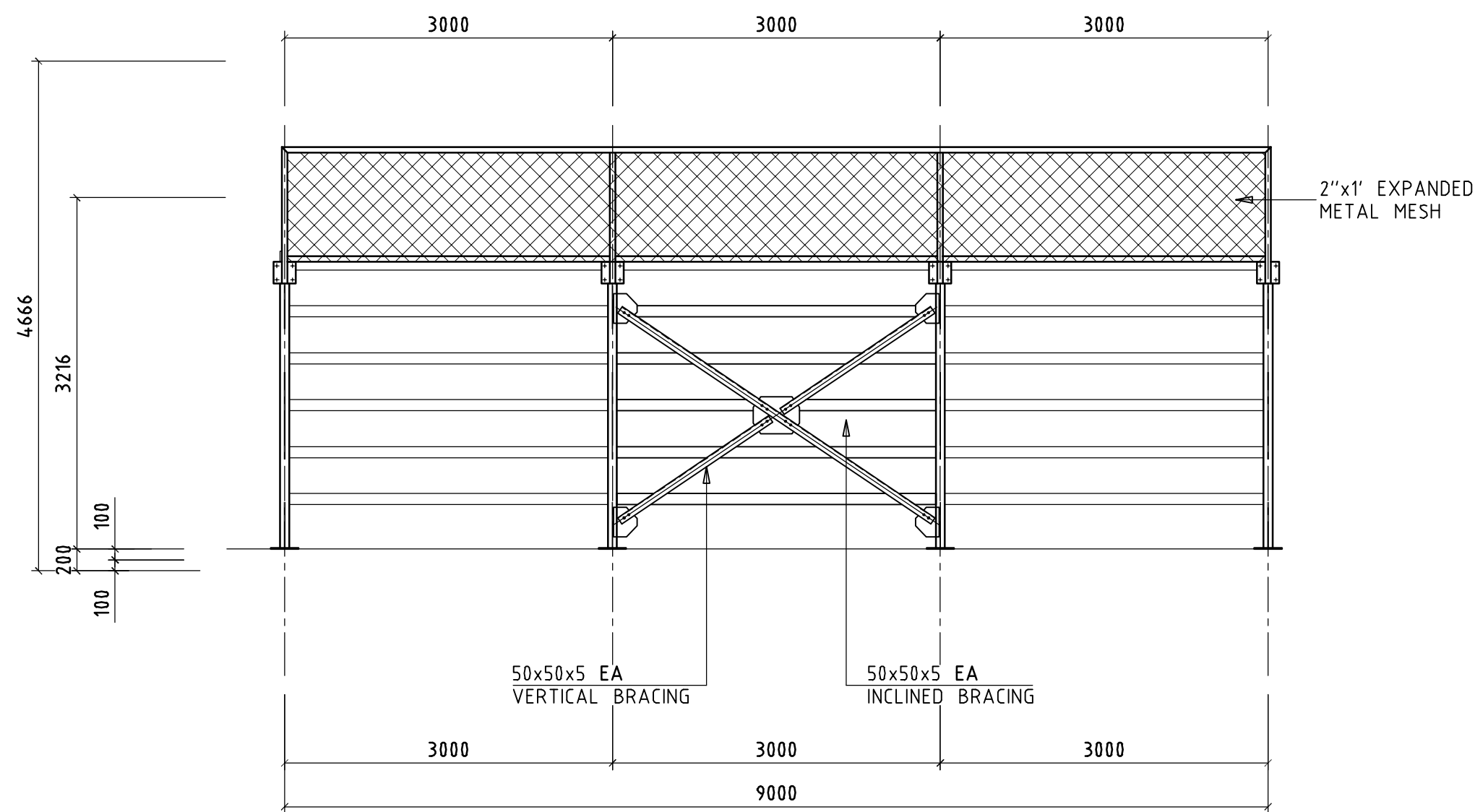
					LIST OF REFERENCE DRAWINGS		AS BUILT		Continued from:-	Designed by:-	EM CHIRWA Pr. Eng	<div>CLIENT:</div> <div></div> <div>UMZIMVUBU MUNICIPALITY</div> <div>PROVINCE OF THE EASTERN CAPE</div> <div>813 MAIN STREET</div> <div>KWABACA</div> <div>5300</div> <div>TEL: 039 255 8500</div> <div>PRIVATE BAG X9020</div> <div>MOUNT FRERE</div> <div>5300</div> <div>FAX: 039 255 0167</div>	Designed by:-	<div></div> <div>MATAYA</div> <div>SPECIALIST ENGINEERS</div> <div>149 MURRAY ROAD</div> <div>HAYFIELD</div> <div>PETERMARTZBURG</div> <div>3249</div> <div>TEL: 039 324 1085</div> <div>CELL: 082 734 4449</div>	<div>PMU Manager</div> <div>Head Infrastructure</div>	PROJECT	CONTRACT No. UMZ/2022-23/INFRA/CAP/29	STAKED km DISTANCE	SHEET 1 OF 1 1
							Supervising Engineer	Date	Continued on:-	Checked by:-	EM CHIRWA Pr. Eng		PORTION	CONSTRUCTION OF MT AYLIFF MPC - PHASE 5		-			
T	05-08-2022	ISSUED FOR TENDER	E.M.C	E.M.C					Cross Section No.-	Drawn by:-	A. NYANGA		TENNIS, BASKETBALL, NETBALL AND HANDBALL COURTS	LAYOUT PLAN AND COLOUR CODING		SCALE	1 : 100	PLAN No.-	MAT-036-C-003
Symbol	Date	Description	Checked	Signed			Supervising Authority		Design Plan No.-	Checked by:-	EM CHIRWA Pr. Eng								
AMENDMENTS					DRAWING NO	DESCRIPTION													



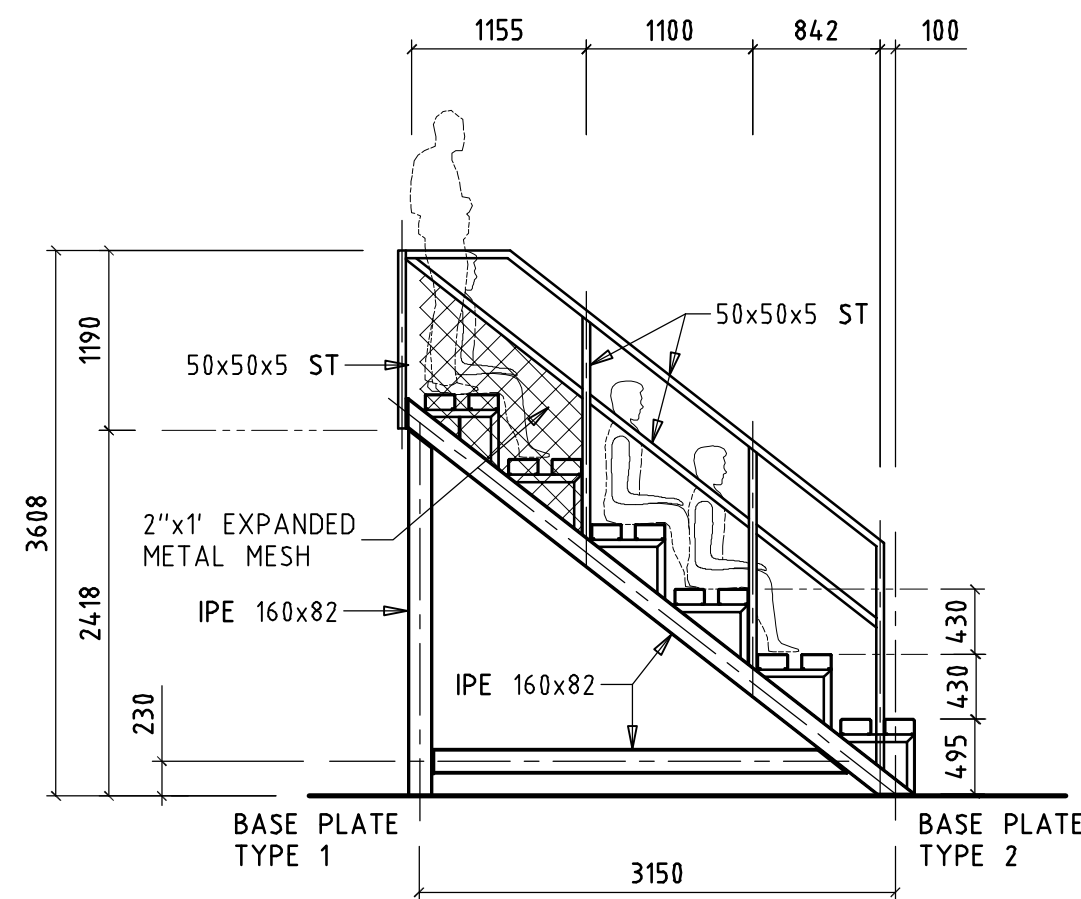
FLOOR PLAN
SCALE 1:50



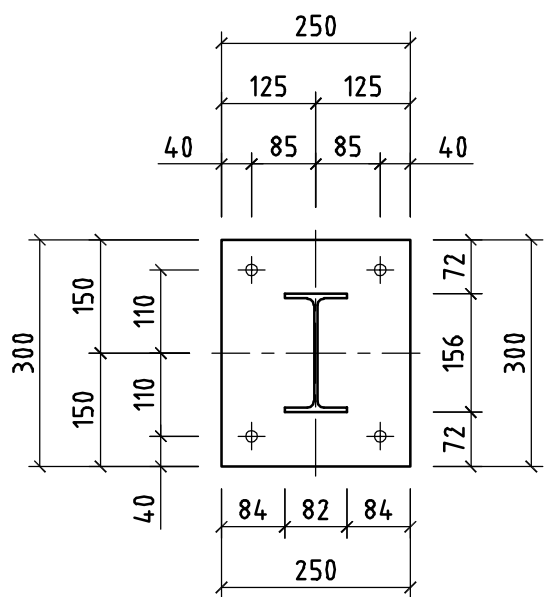
SEAT DETAIL
SCALE 1:10



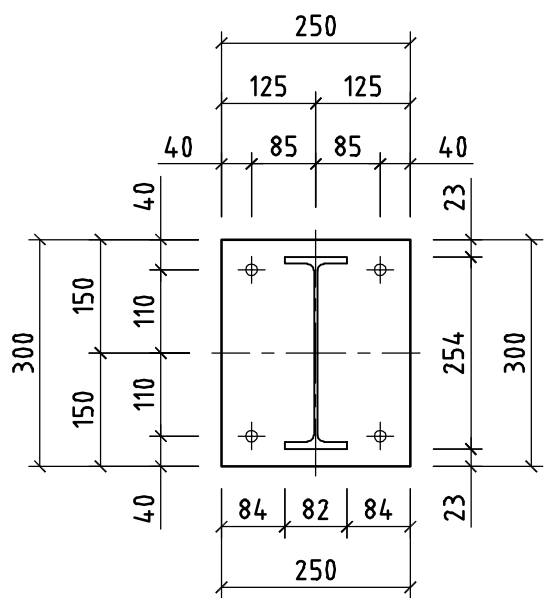
REAR ELEVATION
SCALE 1:50



SIDE ELEVATION
SCALE 1:50



BASE PLATE TYPE 1
SCALE 1:10




BASE PLATE TYPE 2
SCALE 1:10

T	25-08-2022	ISSUED FOR TENDER		E.M.C	
Symbol	Date	Description	Checked	Signed	
AMENDMENTS					

AS BUILT	
Supervising Engineer	Date
Supervising Authority	

Designed by:-	A. NYANGA
Checked by:-	E.M. CHIRWA
Drawn by:-	A. NYANGA
Checked by:-	E.M. CHIRWA
Date of approval:-	25-08-2022

CLIENT:	 UMZIMVUBU LOCAL MUNICIPALITY PROVINCE OF THE EASTERN CAPE
813 MAIN STREET KWABACA 5090 TEL: 039 255 8500	PRIVATE BAG X9020 MOUNT FRERE 5090 FAX: 039 255 0167

Designed by:-	 MATAYA SPECIALIST ENGINEERS
UNIT 48, BLOCK E 73 VILLIERS STREET CLARENDON 3201 TEL: 033 342 2059 CELL: 082 714 4400	25-08-2022 Date
Director	

PMU Manager	
Head: Infrastructure	

CONTRACT No. UMZ/2022-23/INFRA/CAP/29 MT AYLIFF MPC - PHASE 5	PORTION PUBLIC STANDS PLAN, ELEVATIONS AND DETAILS
--	--

STAKED km DISTANCE	SHEET:
-	1 OF 1
SCALE:	AS SHOWN
DRAWING NUMBER	MAT-036-S-201

MAT-036-S-201 REV. T