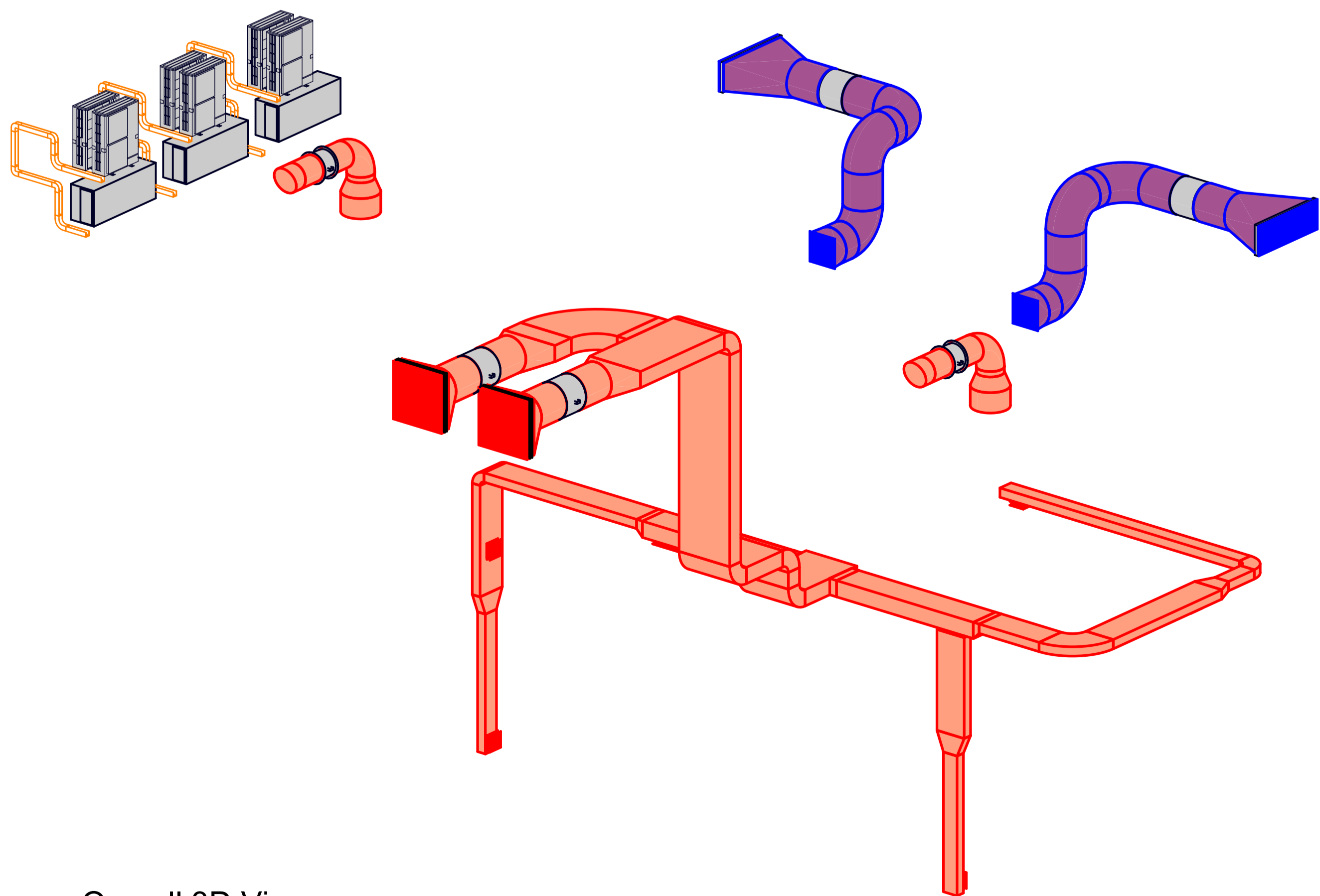
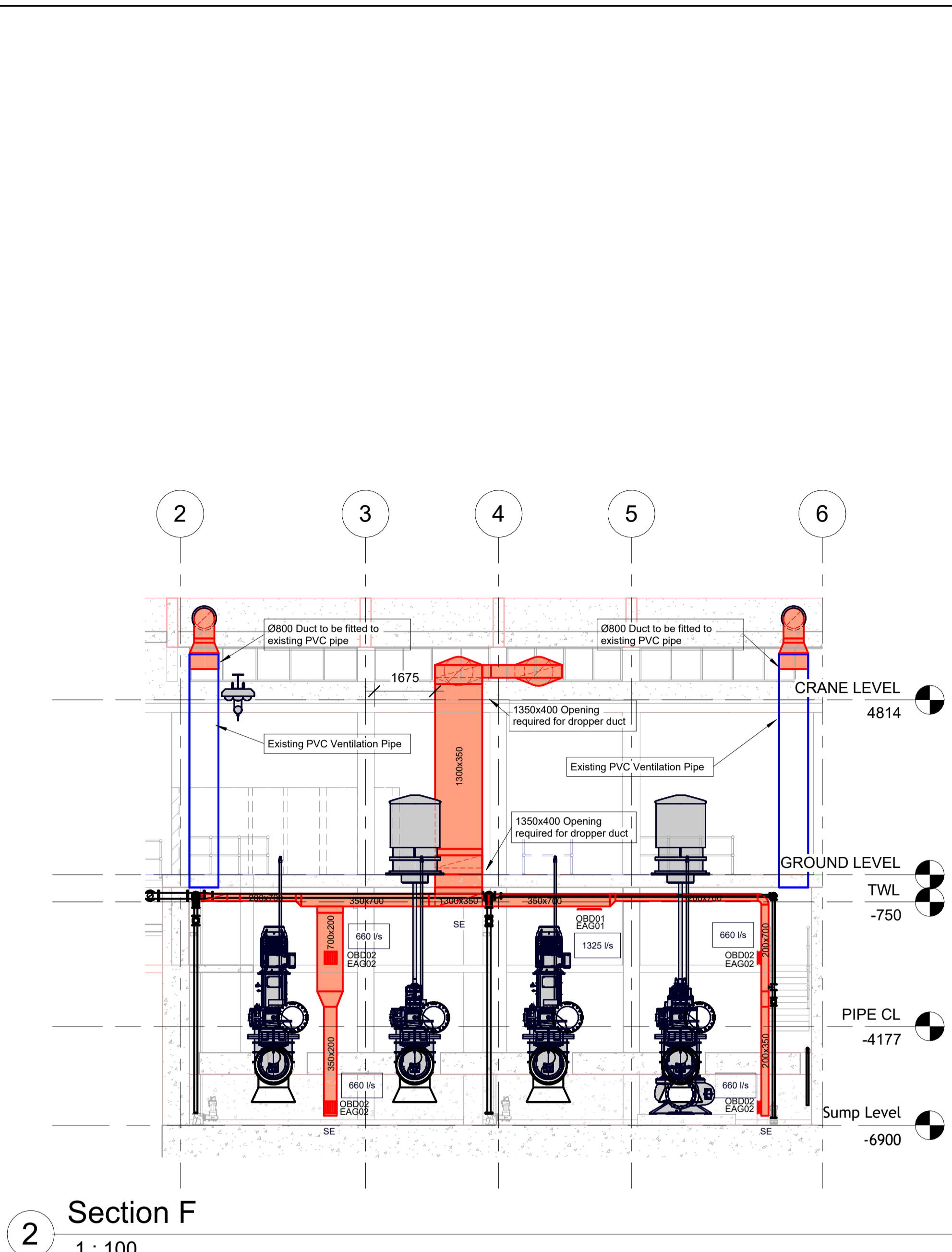


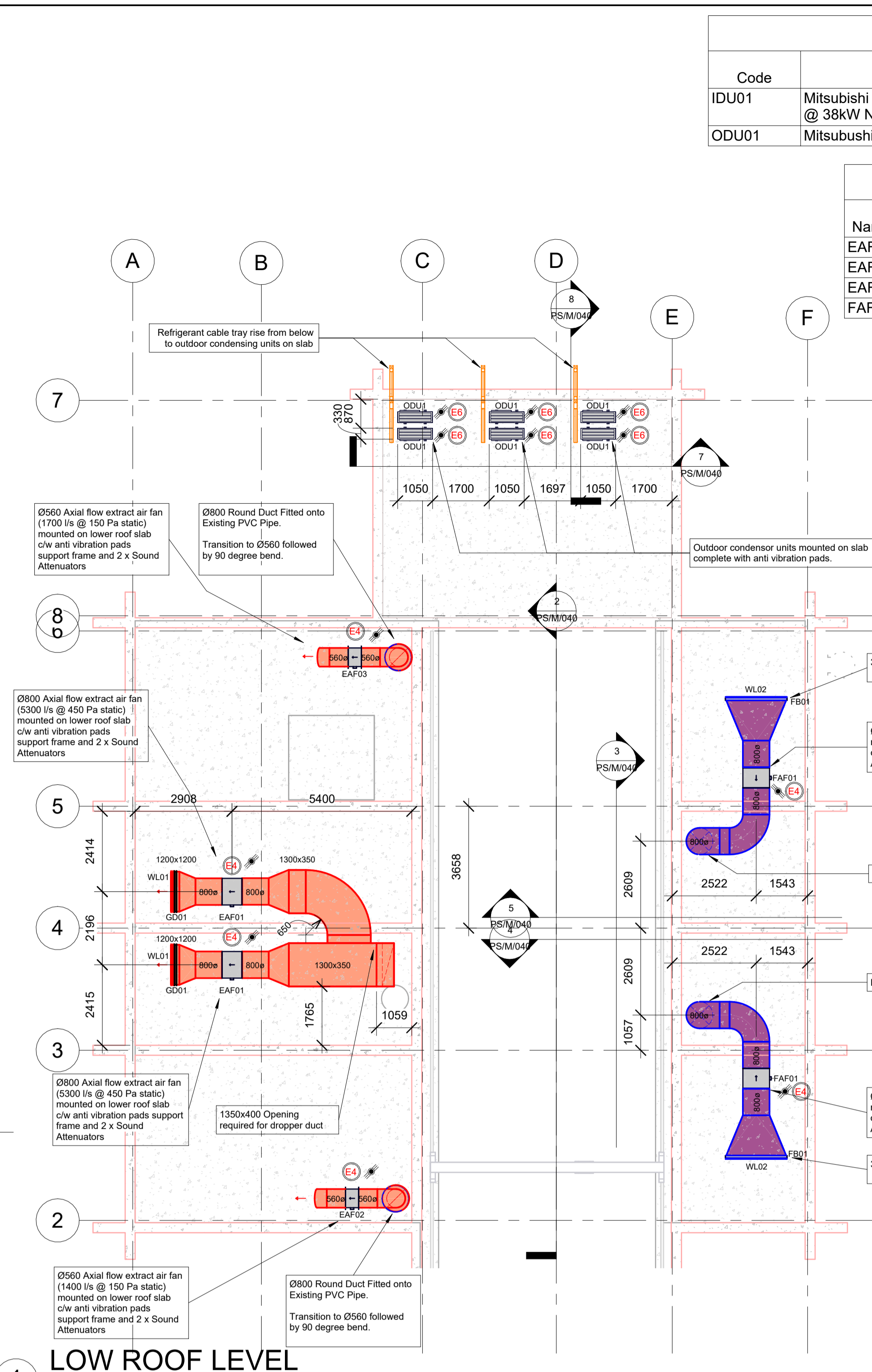
10 Pump Floor Plan View  
1 : 100



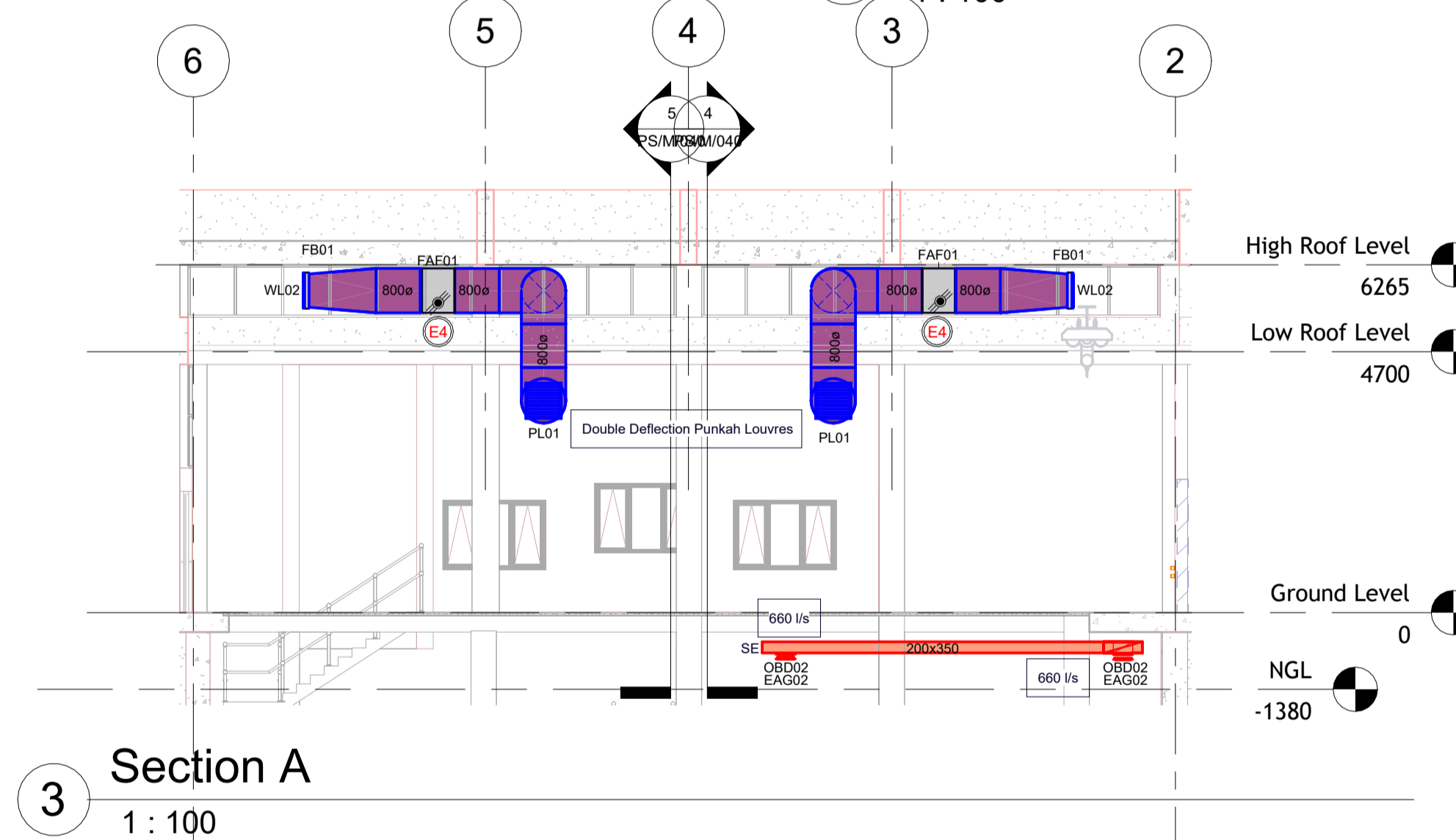
9 Overall 3D View  
1 : 100



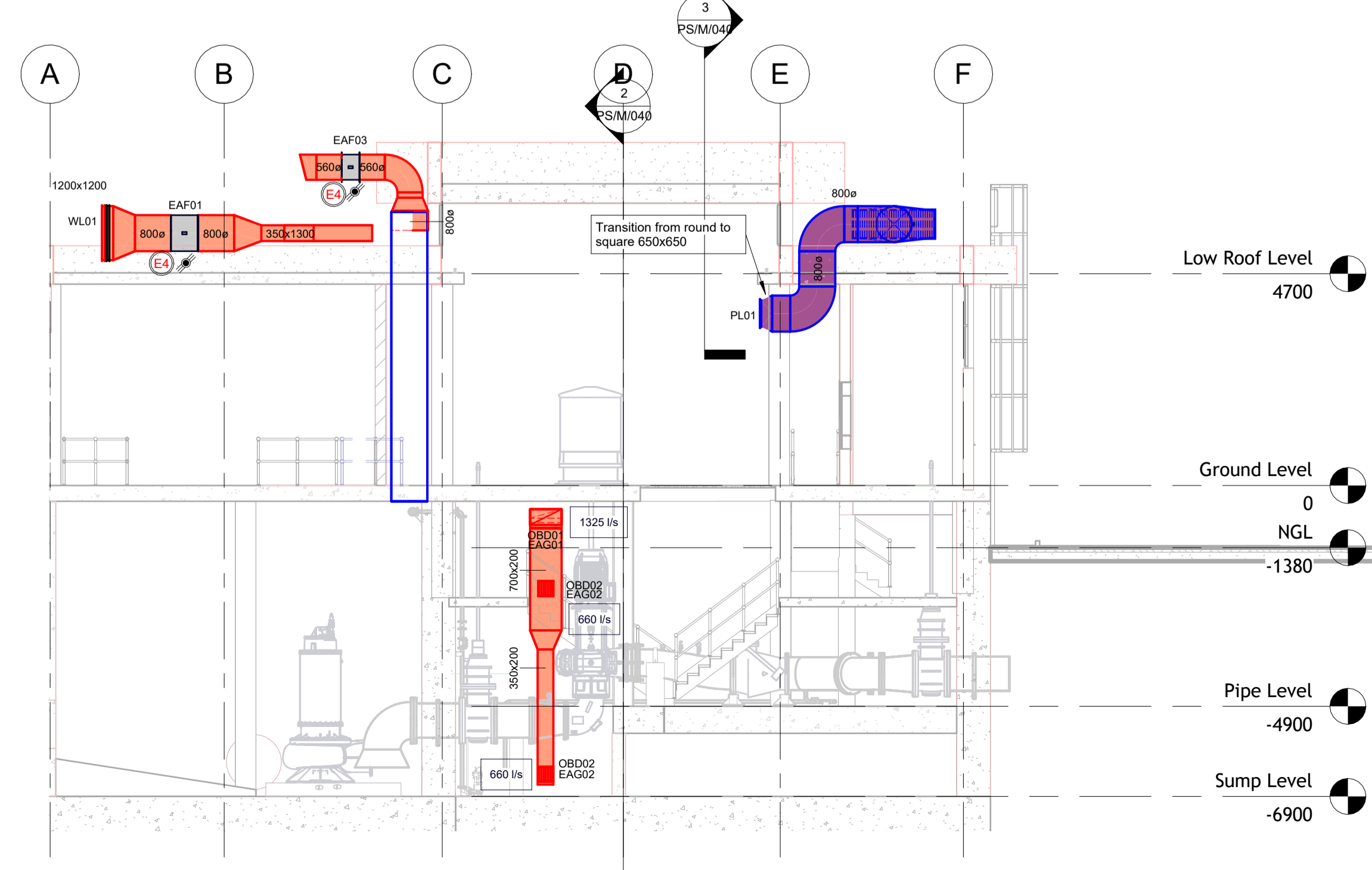
2 Section F  
1 : 100



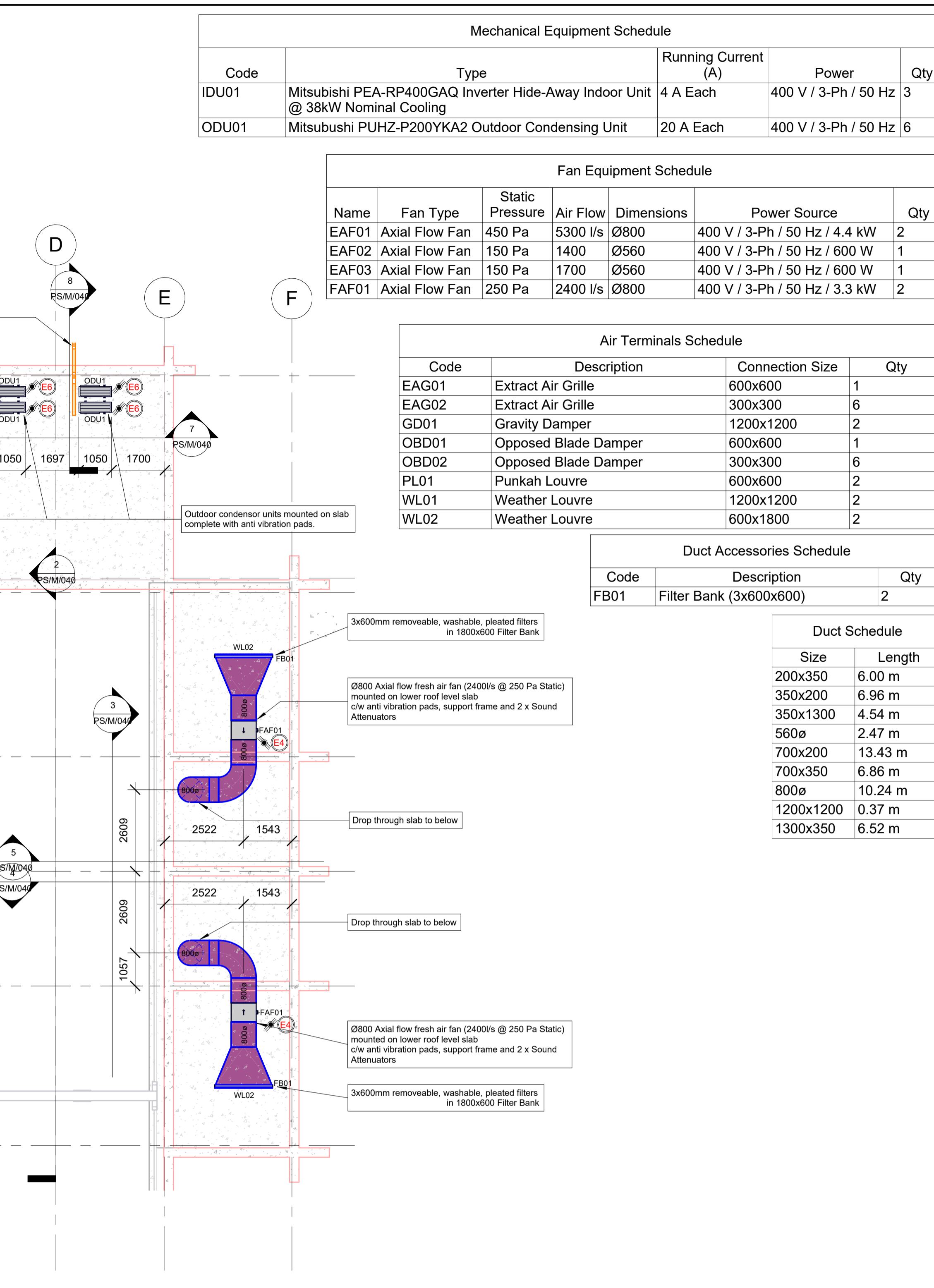
1 LOW ROOF LEVEL  
1 : 100



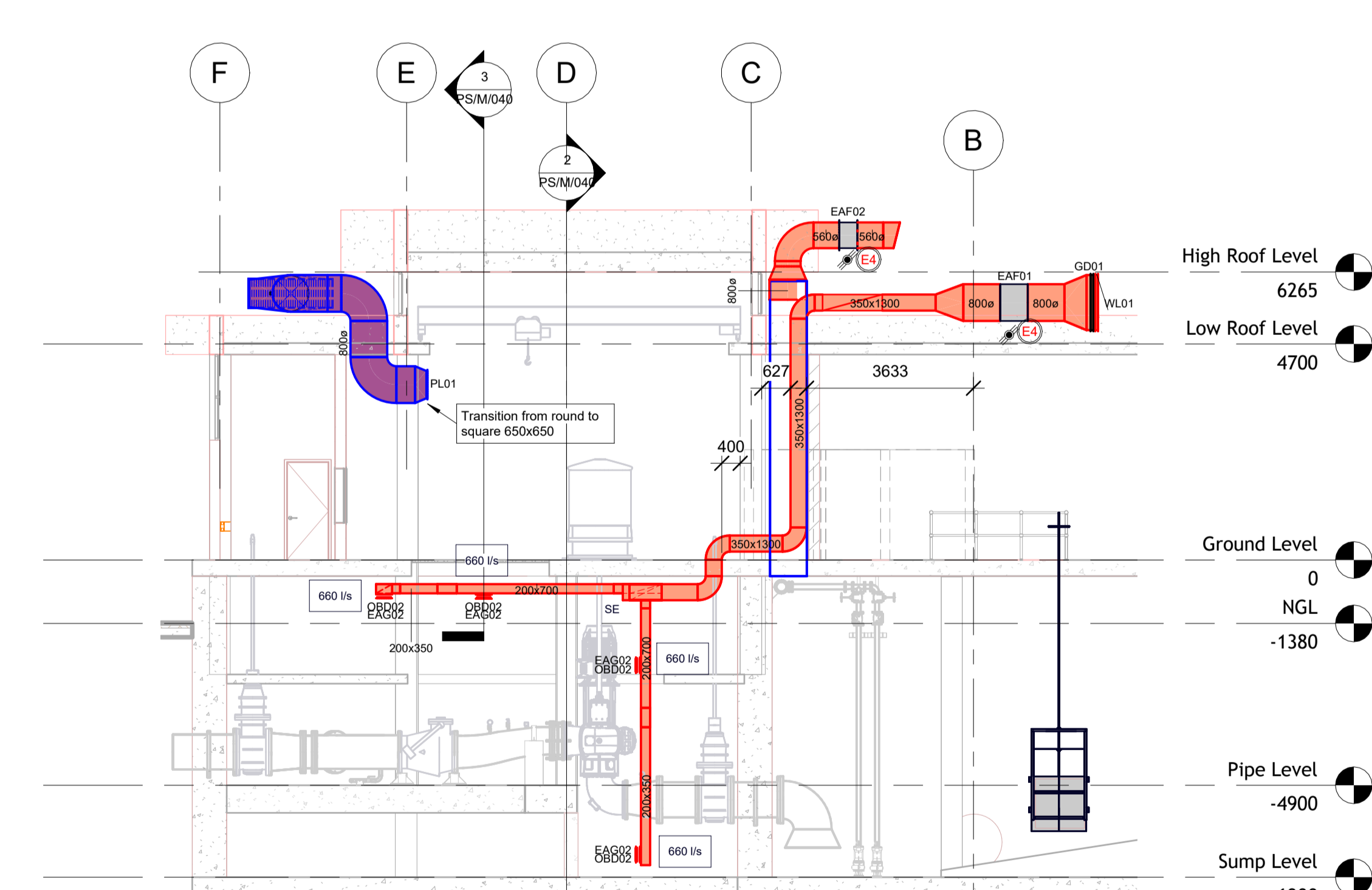
3 Section A  
1 : 100



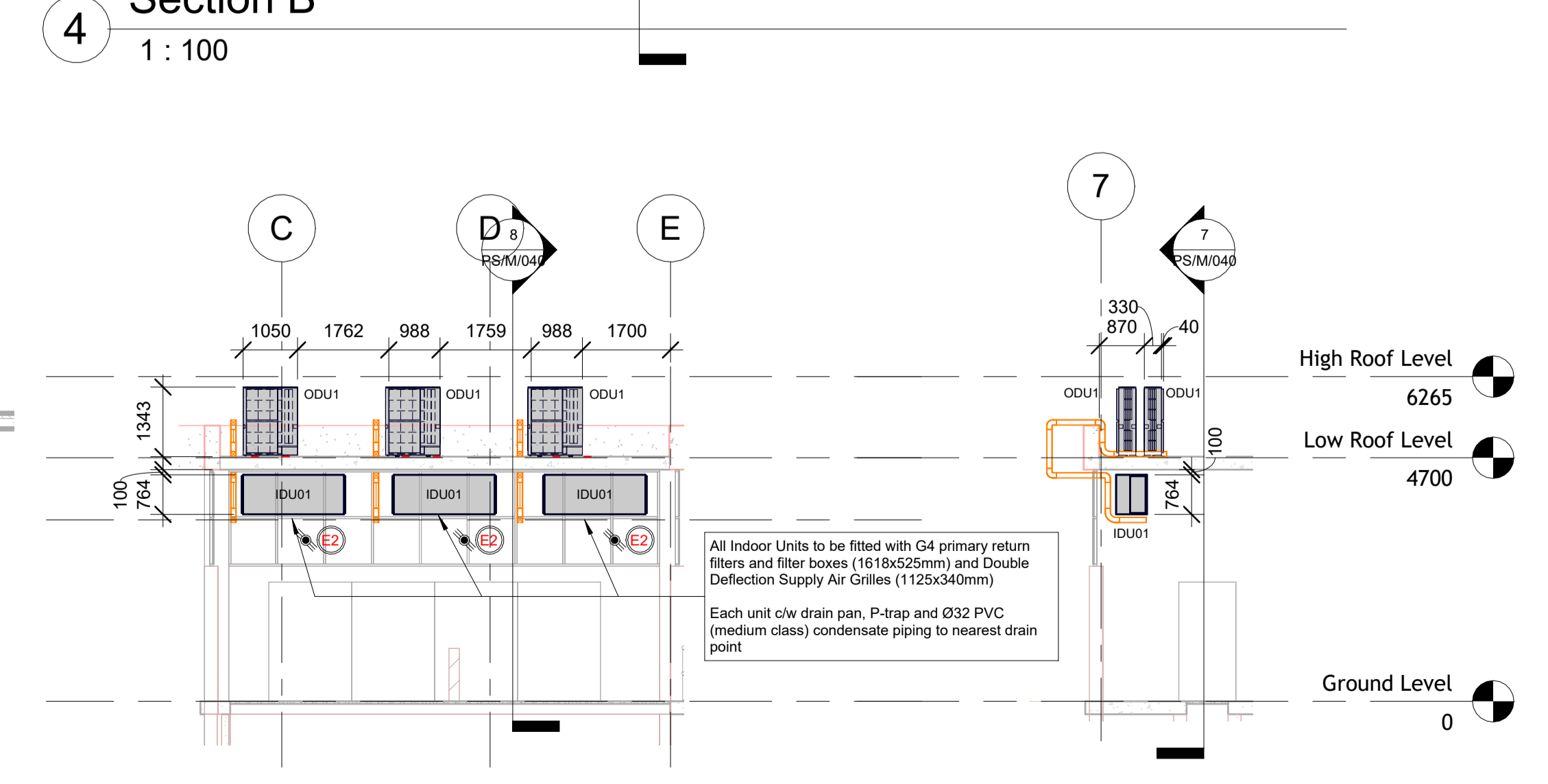
5 Section C  
1 : 100



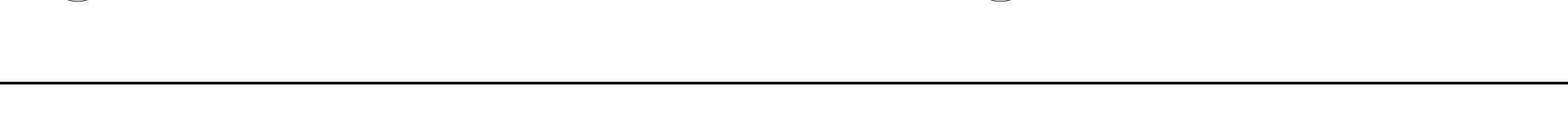
4 Section B  
1 : 100



7 Section D  
1 : 100



7 Section D  
1 : 100



7 Section D  
1 : 100

Mechanical Equipment Schedule				
Code	Type	Running Current (A)	Power	Qty
IDU01	Mitsubishi PEA-RP400GAQ Inverter Hide-Away Indoor Unit @ 38kW Nominal Cooling	4 A Each	400 V / 3-Ph / 50 Hz	3
ODU01	Mitsubishi PUHZ-P200YKA2 Outdoor Condensing Unit	20 A Each	400 V / 3-Ph / 50 Hz	6

Fan Equipment Schedule					
Name	Fan Type	Static Pressure	Air Flow	Dimensions	Power Source
EAF01	AXIAL Flow Fan	450 Pa	5300 l/s	Ø800	400 V / 3-Ph / 50 Hz / 4.4 kW
EAF02	AXIAL Flow Fan	150 Pa	1400	Ø560	400 V / 3-Ph / 50 Hz / 600 W
EAF03	AXIAL Flow Fan	150 Pa	1700	Ø560	400 V / 3-Ph / 50 Hz / 600 W
EAF04	AXIAL Flow Fan	250 Pa	2400 l/s	Ø800	400 V / 3-Ph / 50 Hz / 3.3 kW

Outdoor condensor units mounted on slab  
complete with anti vibration pads.

Air Terminals Schedule			
Code	Description	Connection Size	Qty
EAG01	Extract Air Grille	600x600	1
EAG02	Extract Air Grille	300x300	6
GD01	Gravity Damper	1200x1200	2
ODD01	Opposed Blade Damper	600x600	1
ODD02	Opposed Blade Damper	300x300	6
PL01	Punkah Louvre	600x600	2
WL01	Weather Louvre	1200x1200	2
WL02	Weather Louvre	600x1800	2

Duct Accessories Schedule		
Code	Description	Qty
FB01	Filter Bank (3x600x600)	2

The diagram shows a duct system layout with the following components and annotations:

- 300mmØ removable, washable, glazed filters in 1800x650 Filer Bank**: Located at the top left of the duct system.
- 2800 Axial flow fresh air fan (2400irs @ 250 Pa Static) mounted on lower roof level slab c/w anti vibration pads, support frame and 2 x Sound Attenuators**: Located in the middle of the duct system.
- Drop through slab to below**: Located at the bottom of the duct system.
- Dimensions and Labels**:
  - VL02**: Label for the top left section.
  - F01**: Label for the top right section.
  - 4**: Label for the middle section.
  - WAF01**: Label for the fan unit.
  - 2622**: Dimension for the bottom left section.
  - 1543**: Dimension for the bottom right section.

Duct Schedule	
Size	Length
200x350	6.00 m
350x200	9.96 m
350x1300	4.54 m
560ø	2.47 m
700x200	13.43 m
700x350	6.86 m
800ø	10.24 m
1200x1200	0.37 m
1300x350	6.52 m

DRAWING NUMBER  
7254/PS/M/040

REV  
E

CONSULTANT  
**IXengineers**  
Infrastructure Excellence  
Eastwood Office Park | 270 Lynnwood Service Road |  
Lynnwood Ridge | Pretoria | South Africa  
Tel: +27(0) 12 745 2000 | Fax: +27(0) 12 745 2001  
www.ixengineers.co.za

SUB-CONSULTANT

CONSULTING ENGINEER  
SIGNATURE: \_\_\_\_\_ PPR No: \_\_\_\_\_ DATE: 24/11/05

DESIGNED: \_\_\_\_\_ DRAWN: \_\_\_\_\_ CHECKED: \_\_\_\_\_  
SM SM WS

REVISION SCHEDULE  
E 24/11/05 Issued for Information SM WS  
D 24/10/08 Issued for Information SM WS  
C 24/09/10 Issued for Information SM WS  
B 24/08/07 Issued for Information RUP WS  
A 24/07/24 Issued for Information RUP WS  
No DATE DESCRIPTION DRW/CHK

FOR TENDER  
SCALE FOR REDUCED PLAN  
1X engineers retains the copyright in all intellectual property, including designs and/or documents prepared in terms of the appointment for the project covered by the appointment. The client may use the designs and/or documents for the sole purpose of their intended use on the project only subject to payment for the design having been received. Use for any other purpose, whether or not the design and/or documents have been paid for constitutes an infringement of copyright, and all rights are reserved.  
All dimensions must be verified on site before the works commence. Refer any discrepancies to the Engineer. Copyright reserved

LEGEND:  
- FRESH AIR (GREEN)  
- EXTRACT AIR (ORANGE)  
- SUPPLY AIR (BLUE)  
- DOOR GRILLE  
- SUPPLY AIR GRILLE  
- FILTER BANK  
- FAN (SEE DESCRIPTION IN SCHEDULE)  
- COYL  
- EXTRACT AIR DISC VALVE  
- SUPPLY AIR DISC VALVE  
- AC CASSETTE UNIT  
- SPLIT UNIT  
- WEATHER LOUVRE  
- DOOR CONDENSER UNIT  
- AC THERMOSTAT  
- AC CONTROL LINES  
- DENOTES REFRIGERANT PIPING  
- SINGLE PHASE ISOLATOR  
- THREE PHASE ISOLATOR

ELECTRICAL NOTES:  
(E1) - SINGLE PHASE ISOLATOR  
(E2) - THREE PHASE ISOLATOR  
(E3) - WEATHERPROOF SINGLE PHASE ISOLATOR  
(E4) - WEATHERPROOF THREE PHASE ISOLATOR  
(E5) - LOOKABLE WEATHERPROOF SINGLE PHASE ISOLATOR  
(E6) - LOOKABLE WEATHERPROOF THREE PHASE ISOLATOR  
(E7) - 5 AMP PLUG  
(E8) - THREE PHASE CONNECTOR TO THEATRE PLANT ROOM

CLIENT  
**WASTE AND SANITATION**  
STREKWINI MUNICIPALITY

SANITATION OPERATIONS: MECHANICAL AND ELECTRICAL BRANCH