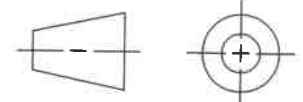
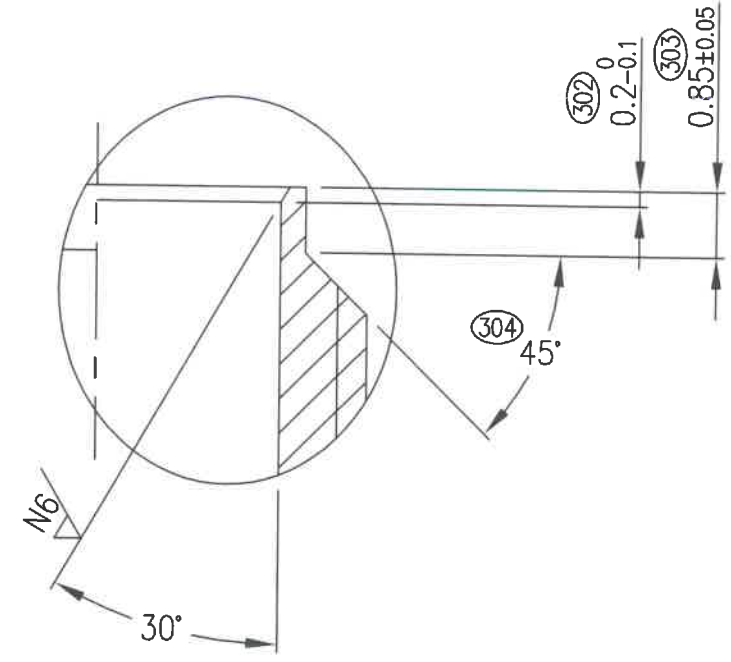
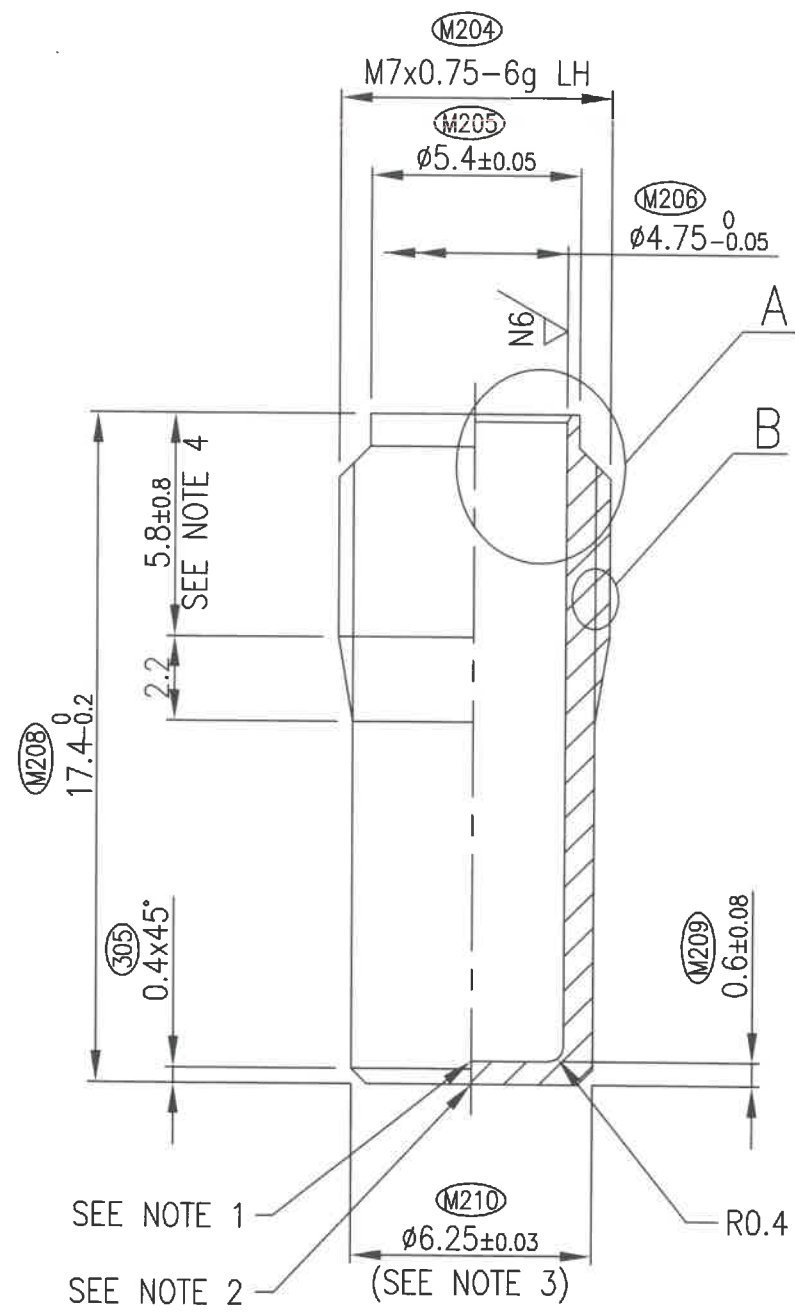


- NOTE:
- (301) 1. A SLIGHT DRILL POINT IS PERMITTED PROVIDED THE DIA. DOES NOT EXCEED 1mm AND THE DEPTH DOES NOT EXCEED 0.3mm.
 - (M201) 2. PERMITTED CUT-OFF PIP; LENGTH 0.08mm MAX. AND DIA. 0.16mm MAX.
 - (M202) 3. NO TRACES OF THREADING ON $\phi 6.25 \pm 0.03$.
 - 4. EFFICIENT THREADING 5.8mm MIN.
 - (M203) 5. EMPTY COMPONENT TO BE FREE FROM ANY LOOSE METAL PARTICLES.

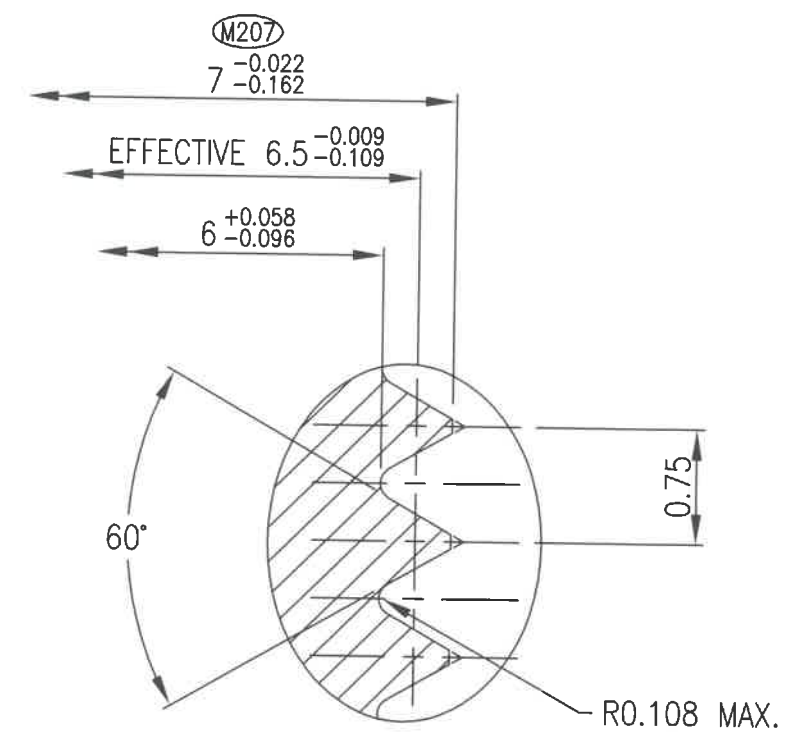
DO NOT SCALE
ALL DIMENSIONS ARE IN mm.



Should a Tenderer/Vendor not be able to meet the requirements of this document, it must be declared in writing to the Buying Manager at the time of tendering/receipt of an order.



ENLARGED DETAIL A



ENLARGED DETAIL B

(306) N8
(M211) [N6] [✓]

HRC

PRODUCT

JOB No. E2/118/96QF

MATERIAL STAINLESS STEEL TO SPEC. 7502104 (M101D)

MACHINE

DRAWN JVR 2007-01-26

CHECKED FJW 2007-02-07

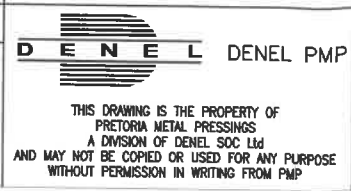
NEXT ASSY 03-1305-3171-00001

REPLACES DRG. No.

GENERAL TOLERANCES (UNLESS OTHERWISE STATED)

LENGTHS AND DIAMETERS								ANGLES		RADI				
0 TO 6	6 TO 30	30 TO 120	120 TO 315	315 TO 1000	1000 TO 2000	2000 TO 4000	4000 AND MORE	0° TO 30°	30° AND MORE	1 TO 6	6 TO 30	30 TO 100	100 TO 300	300 TO 1000
±0,1	±0,2	±0,3	±0,5	±0,8	±1,2	±2,0	±3,0	±30'	±1°	±0,5	±1,0	±1,5	±2,0	±3,0

ALL GEOMETRIC TOLERANCES TO BE WITHIN 0,1



FINALIZED

APPROVED MGV 2007-02-21

PROJECT LEADER

CODE No. 13070027308

SCREEN DRG. No.

CAD No. 00257300

TITLE BODY BOOSTER M506

DRG No. 03-1305-3171-00002

CLASSIFICATION OF CHARACTERISTICS ADDED SEE JOB No. E2/017/17MC		DETAILS	
JVR	DONE BY	17/07/11	DATE.
FJW	APP.	D	REV.