

THE SOUTH AFRICAN NATIONAL ROADS AGENCY SOC LIMITED

COMPULSORY TENDER CLARIFICATION MEETING

FOR

CONTRACT R.062-060-2021/1

**THE SPECIAL MAINTENANCE ON NATIONAL ROUTE
R62 SECTION 6 BETWEEN WC/EC BORDER AND
LOUTERWATER (KM 36.75 – KM 58.60).**

AGENDA

- INTRODUCTION OF PROJECT REPRESENTATIVES
- LOCALITY MAP
- BRIEFING ON TENDER AND CONTRACT DOCUMENTS
 - PART T1: TENDERING PROCEDURES
 - PART T2: RETURNABLE SCHEDULES
 - PART C1: AGREEMENTS AND CONTRACT DATA
 - PART C2: PRICING DATA
 - PART C3: SCOPE OF WORKS
 - PART C4: SITE INFORMATION
- QUESTIONS
- CLOSING

INTRODUCTION



PROJECT REPRESENTATIVES

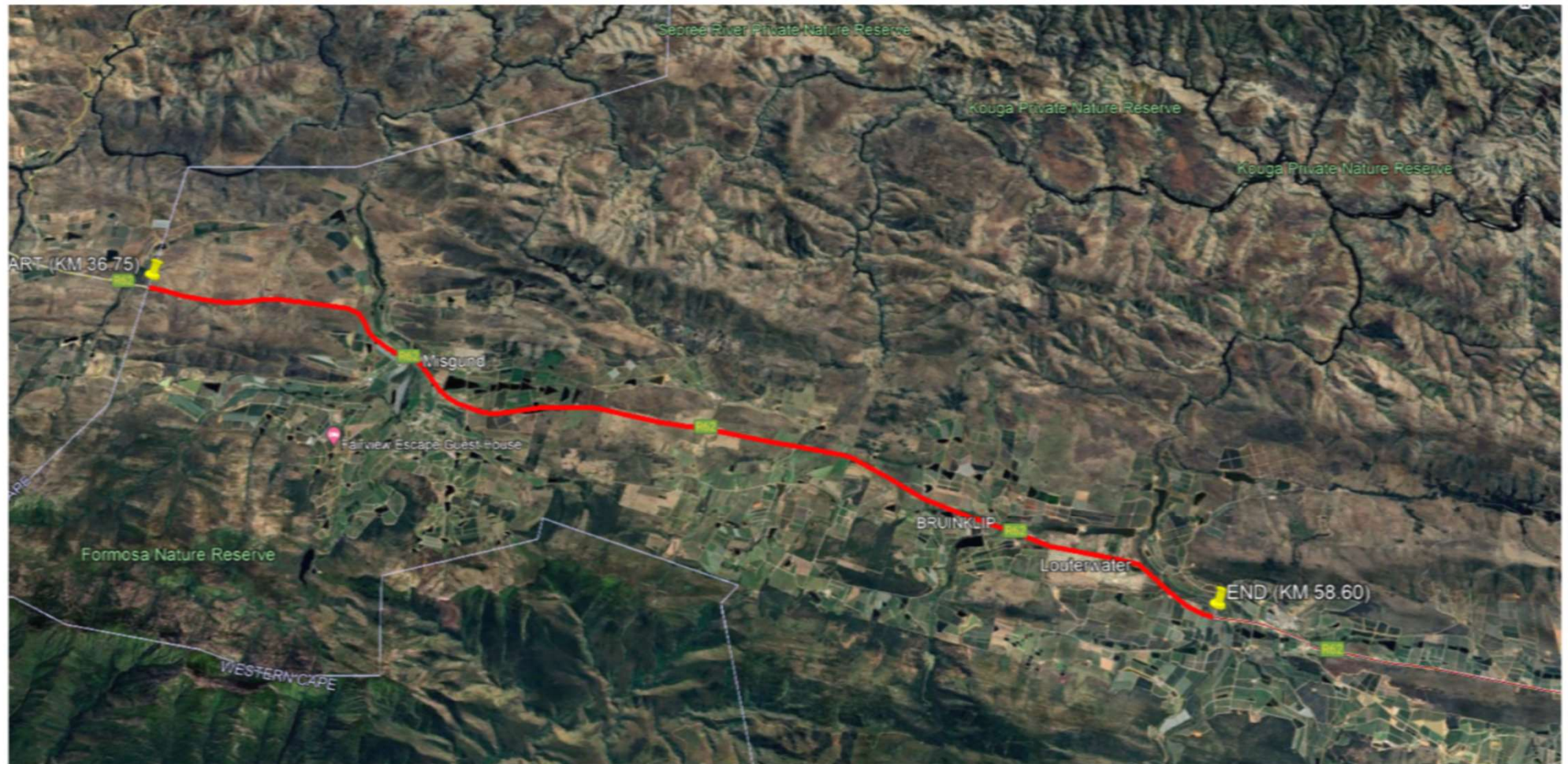
EMPLOYER (SANRAL)

CONSULTING ENGINEER

- Project Leader – TBA
- Contracts Engineer– TBA

IT SHOULD BE NOTED THAT IF THERE ANY DISCREPANCIES BETWEEN THIS PRESENTATION AND THE TENDER DOCUMENT – THE TENDER DOCUMENT TAKES PREFERENCE.

LOCALITY MAP



BRIEFING ON TENDER AND CONTRACT DOCUMENT



PART T1: TENDERING PROCEDURES

PART T2: RETURNABLE SCHEDULES

PART C1: AGREEMENTS AND CONTRACT DATA

PART C2: PRICING DATA

PART C3: SCOPE OF WORK

PART C4: SITE INFORMATION

PART T1: TENDERING PROCEDURES



The South African National Roads Agency SOC Limited (SANRAL) invites tenders for the special maintenance of National Route R62 Section 6 between Western Cape and Eastern Cape border and Louterwater (Km 36.75 - Km 58.60). This project is in the province of Eastern Cape in the district municipality of Sarah Baartman District Municipality local municipality of Kou-Kamma Local Municipality. The approximate duration is 18 months including 3 Months for the Mobilisation Period.

Tenderers should have a CIDB contractor grading designation of **9CE**, however tenderers attention is drawn **to clause C.2.1** of the Tender Data when submitting their tender.

Tenders from tenderers registered as potentially emerging enterprises but with a CIDB contractor grading designation lower than a contractor grading designation determined in accordance with the sum tendered, or a value determined in accordance with Regulation 25(7A) of the Construction Industry Development Regulations, will not be accepted.

PART T1: TENDERING PROCEDURES



T1.1 TENDER NOTICE AND INVITATION TO TENDER

- **TENDER DOCUMENTS**

- Available at no cost in electronic format on CD in MS Office ©2013 and Acrobat Adobe ©9.0.

- Tender documents are available at no cost in electronic format and can be downloaded from the SANRAL's website at the following link:
https://www.nra.co.za/sanral-tenders/status?region_id=national

- **TENDERER'S MEETING**

- **A compulsory tender briefing is applicable for grade 9 CE contractors.**
- **Completed and signed form A1.1 to submitted by 14th July 2023.**

PART T1: TENDERING PROCEDURES



- **COMPLETION AND DELIVERY OF TENDERS**
 - The closing time for receipt of tenders is at **11h00 on Friday, 11th August 2023.**
 - Physical address: **SANRAL Southern Region 20 Shoreward Drive, Bay West, Gqeberha**
- **IDENTIFICATION DETAILS:**
 - **Clearly mark :**
“FOR THE SPECIAL MAINTENANCE ON NATIONAL ROUTE R62 SECTION 6 BETWEEN WC/EC BORDER AND LOUWERWATER (KM 36.75 – KM 58.60).
- Tenders may only be submitted in the format as stated in the Tender Data.
- **Queries** relating to issues arising from these documents may be addressed to:

BIDDING PROCEDURE ENQUIRIES AND TECHNICAL ENQUIRIES

Contact person: Procurement Office

Tel No: 041 398 3200

E-mail: ProcurementSR3@sanral.co.za

PART T2: TENDERING PROCEDURES



T1.2 TENDER DATA

The **Conditions of Tender** are the standard conditions as contained in **Annexure C** of the
CIDB

**STANDARD FOR UNIFORMITY IN ENGINEERING AND CONSTRUCTION WORKS
CONTRACTS**

as per **Government Notice No. 423** published in **Government Gazette No. 42622 of 08**

AUGUST 2019 and as amended from time to time.

PART T2: TENDERING PROCEDURES



T1.2 TENDER DATA

Clause Number	Data
C.1.1 a)	The Employer is The South African National Road Agency SOC Limited (SANRAL). The Employer's domicilium citandi et executandi (permanent physical business address) is: 48 Tambotie Avenue Val De Grace, Pretoria, 0184
b)	The Employer's address for communication relating to this project is: The Regional Manager (Southern Region) The South African National Roads Agency SOC Ltd 20 Shoreward Drive Bay West Gqeberha 6025

PART T1: TENDERING PROCEDURES



T1.2 TENDER DATA

Clause Number	Data
C.1.2	<p>The tender documents issued by the Employer comprise:</p> <ul style="list-style-type: none">Part T1: Tendering Procedures<ul style="list-style-type: none">T1.1 Tender notice and invitation to tenderT1.2 Tender dataPart T2: Returnable Schedules<ul style="list-style-type: none">T2.1 List of returnable documentsT2.2 Returnable schedulesPart C1: Agreements and contract data<ul style="list-style-type: none">C1.1 Form of offer and acceptanceC1.2 Contract dataPart C2: Pricing data<ul style="list-style-type: none">C2.1 Pricing instructions (assumptions)C2.2 Pricing Schedules / Bills of QuantitiesPart C3: Scope of work<ul style="list-style-type: none">C3 Scope of workPart C4: Project Information<ul style="list-style-type: none">C4 Site InformationPart C5: Annexures

PART T1: TENDERING PROCEDURES



T1.2 TENDER DATA

Clause Number	Data
C.1.4	All communication to be done through the Employer's Procurement Office and may be contacted at ProcurementSR3@sanral.co.za

PART T1: TENDERING PROCEDURES



T1.2 TENDER DATA

Clause Number	Data
C.2	Tenderers Obligations
C.2.1	Eligibility
	Only those Tenderers who satisfy the following eligibility criteria are eligible to submit tenders:
	a) CIDB Registration (Form A12)

Failure to satisfy all the eligibility criteria will result in a non-eligible tender.

PART T1: TENDERING PROCEDURES



T1.2 TENDER DATA

Clause Number	Data
C.2	Tenderers Obligations
C.2.1	<p>Eligibility</p> <p>Only those Tenderers who satisfy the following eligibility criteria are eligible to submit tenders:</p> <p>a) CIDB Registration (Form A12)</p> <p>Only those tenderers who are registered with the CIDB, or are capable of being so prior to the evaluation of submissions, in a contractor grading designation equal to or higher than a contractor grading designation determined in accordance with the sum tendered, or a value determined in accordance with Regulation 25 (1B) or 25(7A) of the Construction Industry Development Regulations, for a 9CE class of construction work, are eligible to have their tenders evaluated.</p>

PART T1: TENDERING PROCEDURES



T1.2 TENDER DATA

Clause Number	Data
C.2	Tenderers Obligations
C.2.1	<p>Eligibility</p> <p>Only those Tenderers who satisfy the following eligibility criteria are eligible to submit tenders:</p> <p>a) CIDB Registration (Form A12)</p> <p>ii) Joint ventures are eligible to submit tenders provided that:</p> <p>a) every member of the joint venture is registered with the CIDB;</p>

PART T1: TENDERING PROCEDURES



T1.2 TENDER DATA

Clause Number	Data
C.2	Tenderers Obligations
C.2.1	<p>Eligibility</p> <p>Only those Tenderers who satisfy the following eligibility criteria are eligible to submit tenders:</p> <ul style="list-style-type: none">a) CIDB Registration (Form A12)ii) Joint ventures are eligible to submit tenders provided that:<ul style="list-style-type: none">b) the lead partner has a contractor grading designation in the 9 CE class of construction work; or not lower than one level below the required grading designation in the class of construction works under consideration and possess the required recognition status;

PART T1: TENDERING PROCEDURES



T1.2 TENDER DATA

Clause Number	Data
---------------	------

C.2	Tenderers Obligations
-----	-----------------------

C.2.1	Eligibility
-------	-------------

Only those Tenderers who satisfy the following eligibility criteria are eligible to submit tenders:

a) CIDB Registration (Form A12)

ii) Joint ventures are eligible to submit tenders provided that:

c) the combined contractor grading designation calculated in accordance with the Construction Industry Development Regulations is equal to or higher than a contractor grading designation determined in accordance with the sum tendered for a 9CE class of construction work or a value determined in accordance with Regulation 25 (1B) or 25(7A) of the Construction Industry Development Regulations.

PART T1: TENDERING PROCEDURES



T1.2 TENDER DATA

Clause Number	Data
C.2	Tenderers Obligations
C.2.1	Eligibility
	Only those Tenderers who satisfy the following eligibility criteria are eligible to submit tenders:
	a) CIDB Registration (Form A12)
	iii) Tenderers whose CIDB registration expires within the tender validity period, need to demonstrate that there is a reasonable chance of being registered in the appropriate grading designation during the tender evaluation period, by submitting a copy of their timely application for CIDB registration, with their tender submission.

PART T1: TENDERING PROCEDURES



T1.2 TENDER DATA

Clause Number	Data
C.2	Tenderers Obligations
C.2.1	Eligibility
	Only those Tenderers who satisfy the following eligibility criteria are eligible to submit tenders:
	a) CIDB Registration (Form A12)
	iv) Tenderers registered as potentially emerging enterprises but with a CIDB contractor grading designation lower than a contractor grading designation determined in accordance with the sum tendered, or a value determined in accordance with Regulation 25 (7A) of the Construction Industry Development Regulations, are not eligible to have their tenders evaluated.

PART T1: TENDERING PROCEDURES



T1.2 TENDER DATA

Clause Number	Data
C.2	Tenderers Obligations
C.2.2	Cost of Tendering Tender documents are available from SANRAL website at no cost.
C.2.6	Acknowledge Addenda Failure to apply instructions contained in addenda issued by the Employer will render a Tenderer's offer non-responsive in terms of Condition of Tender C.3.8. Test for Responsiveness.

COMPLETE AND RETURN FORM A1.1

PART T1: TENDERING PROCEDURES



T1.2 TENDER DATA

Clause Number	Data
C.2	Tenderers Obligations
C.2.8	Seek Clarification Request clarifications at least twelve (12) working days before the closing date.
C.2.9	Insurance No insurance is provided by the Employer.

PART T1: TENDERING PROCEDURES



T1.2 TENDER DATA

Clause Number	Data
C.2	Tenderers Obligations
C.2.10	Pricing the Tender Offer
C.2.10.3	The rates and prices shall be adjusted as specified in the Conditions of Contract, clause 13.8 – Adjustments for Changes in Costs.
C2.10.4	Tenderers are required to state the rates, amounts and currencies in Rand.
C.2.12	Alternative Tender Offers The application shall not be submitted later than 7 (seven) working days before the date of tender closing given in Tender Data, clause C.2.15, or as extended by an addendum sent to all Tenderers. Confirmation must have been provided by the Employer in writing.

PART T1: TENDERING PROCEDURES



T1.2 TENDER DATA

Clause Number	Data
C.2	Tenderers Obligations
C.2.13	Submitting a Tender Offer
C.2.13.2	The returnable documents shall be electronically completed in their entirety, submitted on the issued software format or fully compatible format, unless otherwise specified.

Option 1: Submission in the tender box

Submit the tender offer electronically on a flash drive.

(In the relevant MS Word 2013 and MS Excel 2013 format as issued, and not in .pdf format, except where so specified.)

PART T1: TENDERING PROCEDURES



T1.2 TENDER DATA

Clause Number	Data
C.2	Tenderers Obligations
C.2.13	Submitting a Tender Offer
C.2.13.5	Option 1: Submission in the tender box Only the following needs to be submitted: a) Main Tender Offer The following information to be submitted electronically on flash drive and marked Main Tender Offer followed by the “Tenderer name”, in the following order: - Form of Offer (signed and scanned as .pdf) - All returnable schedules and attachments and certificates specific to the tender (signed and scanned as .pdf) - Completed pricing schedule (scanned copy in .pdf and copy in Excel)

PART T1: TENDERING PROCEDURES



T1.2 TENDER DATA

Clause Number	Data
C.2	Tenderers Obligations
C.2.13	Submitting a Tender Offer
C.2.13.5	Option 1: Submission in the tender box Only the following needs to be submitted: b) For alternative offers the tenderer shall submit the following additional documentation, in an electronically on a separate flash drive marked Alternative followed by the "Tenderer name": <ul style="list-style-type: none">- Form of Offer (signed and scanned as .pdf and state "Alternative Form of Offer")- All returnable schedules and attachments and certificates applicable to the alternative offer (signed and scanned as .pdf)- Alternative Pricing Schedule (scanned copy in .pdf and copy in Excel)- Other relevant information.

PART T1: TENDERING PROCEDURES



T1.2 TENDER DATA

Clause Number	Data
C.2	Tenderers Obligations
C.2.13	Submitting a Tender Offer
C.2.13.5	Option 1: Submission in the tender box Only the following needs to be submitted: b) For alternative offers , the tenderer shall submit the following In the event of any discrepancy between the contents of the electronically priced schedule in Excel, and the electronically provided pricing schedule in .pdf format, the contents of the electronically pricing schedule in .pdf format shall be taken as the valid contents. For the information provided by the tenderer as part of his submission, e.g. rates, the electronically signed schedule in .pdf shall be taken as the valid submission. Submit the tender offer electronically on a flash drive in a sealed envelope marked with the tenderer's company name, the project number and description.

PART T1: TENDERING PROCEDURES



T1.2 TENDER DATA

Clause Number	Data
C.2	Tenderers Obligations
C.2.13	Submitting a Tender Offer
C.2.15.1	Option 1: Submission in the tender box

The Employer's address for delivery of tender offers and identification details to be shown on each tender offer package are:

Location of tender box: Reception

Physical address:

The South African National Roads SOC Ltd (Southern Region)
20 Shoreward Drive
Bay West
Gqeberah
6025

PART T1: TENDERING PROCEDURES



T1.2 TENDER DATA

Clause Number	Data
C.2	Tenderers Obligations
C.2.13	Submitting a Tender Offer
C.2.15.1	Option 1: Submission in the tender box

Identification details: Place the tender offer and flash drive in a package marked with the tenderer's company name, the project number and description:

CONTRACT R.062-070-2021/1

**THE SPECIAL MAINTENANCE ON NATIONAL ROUTE R62 SECTION 6
BETWEEN WC/EC BORDER AND LOUWERWATER (KM 36.75 – KM
58.60)**

Tenders must be submitted during hours (09:00 to 16:00) Monday to Friday at the Employer's address.

PART T1: TENDERING PROCEDURES



T1.2 TENDER DATA

Clause Number	Data
C.3	Employer's Undertakings
C3.4	Opening of Tender Submissions
C3.4.1	<p>The time for opening of the tender offer via live streaming or at Southern Region are:</p> <p>11h00 on Friday, 11th August 2023</p> <p>The link will be distributed in an addendum to all tenderers that have completed and returned Form A1.1</p> <p><u>Complete and return form A1.1</u></p>

PART T1: TENDERING PROCEDURES



T1.2 TENDER DATA

Clause Number	Data
C.3	Employer's Undertakings
C3.5	Two-envelope System

Clause C.3.5 is **not applicable**.

PART T1: TENDERING PROCEDURES



T1.2 TENDER DATA

Clause Number	Data
C.3	Employer's Undertakings
C3.8	Test for Responsiveness

- a) A **Substantially responsive tender** is a tender in which **all the material information** and documentation submitted at close of tender contains non-material and non-conformities to the bid specifications **but are not related to price**. **The correction** of any such documentation or information, or the condonement for the non-inclusion of any such document or information **may not** be prejudicial towards the offer and claimed preference of any responsive tender or be construed to **be giving an unfair advantage to any tender**.
- b) A **responsive tender** is also one that **conforms to all the terms, conditions, and scope of work of the tender documents, without material omissions**. The test for a material omission is the same as the test for a material deviation or qualification.

PART T1: TENDERING PROCEDURES



T1.2 TENDER DATA

Clause Number	Data
C.3	Employer's Undertakings
C3.11	<p>Evaluation of Tender Offers</p> <p>90/10 preference point system for acquisition of goods and services for Rand value above R 50 million will apply. A maximum of 10 points will be awarded for the B-BBEE status level of Contribution and 90 points shall be awarded for price.</p>

PART T1: TENDERING PROCEDURES



T1.2 TENDER DATA

Specific goals	Criteria	10 points		20 points	
		Point allocation	Max points	Point allocation	Max points
B-BBEE level scorecard of the tendering entity.	B-BBEE Level 1	1.00	1	2.00	2
	B-BBEE Level 2	0.90		1.80	
	B-BBEE Level 3	0.60		1.20	
	B-BBEE Level 4	0.50		1.0	
	B-BBEE Level 5	0.40		0.80	
	B-BBEE Level 6	0.30		0.60	
	B-BBEE Level 7	0.20		0.40	
	B-BBEE Level 8	0.10		0.20	
	Non-compliant contributor	0		0	

Specific goals	Criteria	10 points		20 points	
		Point allocation	Max points	Point allocation	Max points
Percentage Subcontracting to Targeted Enterprises	Min 40 % subcontracting	0	4	0	8
	>40 to < 45 % subcontracting	1		2	
	≥ 45 to < 50 % subcontracting	2		4	
*Percentage black ownership of the tendering entity.	< 51 % black ownership	0	5	0	10
	≥ 51 to < 70 % black ownership.	1		2	
	≥ 70 to < 100 % black ownership.	2		4	

PART T1: TENDERING PROCEDURES



T1.2 TENDER DATA

Clause Number	Data
C.3	Employer's Undertakings
C3.11	<p>Evaluation of Tender Offers</p> <p>The following formula will be used to calculate the points out of 90 for</p> <p>price: $P_s = 90(1 - (P_t - P_m) / P_m)$</p> <p>Where:</p> <p>$P_s$ is the points scored for price of tender under consideration. P_t is the price of the tender under consideration; and</p> <p>P_m is the price of the lowest acceptable tender.</p>

PART T1: TENDERING PROCEDURES



T1.2 TENDER DATA

Clause Number	Data
C.3	Employer's Undertakings
C3.11 (f)	Determine acceptability of preferred tenderer Price negotiations (a) If the price offered by a tenderer with the tender scoring the highest points is not market related, the Organ of state may not award the tender to that tenderer. PPPFA Sub-Regulation 6(9) and 7(9) (b) The Organs of state may- <ul style="list-style-type: none">i. Negotiate a market related price with the tender scoring the highest points or cancel the tender;ii. If the tenderer does not agree to a market related price, negotiate a market related price with the tenderer scoring the second highest points or cancel the tender;iii. If the tenderer scoring the second highest points does not agree to a market related price, negotiate with the third highest scoring tenderer or cancel the tender. (c) If a market related price is not agreed as envisaged in paragraph b(iii), the organ of state must cancel the tender.

PART T2: RETURNABLE SCHEDULES



T2.1 LIST OF RETURNABLE SCHEDULES

FORM NO / SBD NO	FORM DESCRIPTION	TICK IF COMPLETED
A1	CERTIFICATE CONFIRMING THAT THE TENDERER READ THE PRESENTATION BRIEFING	
A1.1	CERTIFICATE OF INTENTION TO SUBMIT A TENDER	
A2.1	CERTIFICATE OF AUTHORITY FOR SIGNATORY	
A2.2	DECLARATION OF TENDERER'S CURRENT STATUS OF ANY DEBT OUTSTANDING TO SANRAL	
A2.3	CERTIFICATE OF SINGLE TENDER SUBMISSION	
A2.4	CERTIFICATE OF FRONTING PRACTICES	
A2.5	DECLARATION OF DOMESTIC PROMINENT INFLUENTIAL PERSONS, FOREIGN PROMINENT PUBLIC OFFICIALS OR FOREIGN INFLUENTIAL NATIONALS (DPIPs, FPPOs OR FINs)	
A2.6	CERTIFICATE OF PERMISSION TO CONDUCT DUE DILIGENCE INVESTIGATION	
A3.1 / SBD4	BIDDER'S DISCLOSURE	
A3.2 / SBD9	CERTIFICATE OF INDEPENDENT TENDER	
A3.3 / SBD8	DECLARATION OF TENDERER'S PAST SUPPLY CHAIN MANAGEMENT PRACTICES	

PART T2: RETURNABLE SCHEDULES

T2.1 LIST OF RETURNABLE SCHEDULES

FORM NO / SBD NO	FORM DESCRIPTION	TICK IF COMPLETED
A3.4	REGISTRATION ON NATIONAL TREASURY CENTRAL SUPPLIER DATABASE	
A3.5/SBD6.2	DECLARATION CERTIFICATE FOR LOCAL PRODUCTION AND CONTENT FOR DESIGNATED SECTORS	
A3.6	LOCAL CONTENT DECLARATION: SUMMARY SCHEDULE	
A4	SCHEDULE OF DEVIATIONS OR QUALIFICATIONS BY TENDERER	
A5	SCHEDULE OF ADDENDA TO TENDER DOCUMENTS	
A6 / SBD2	CERTIFICATE OF TAX COMPLIANCE	
A7	CERTIFICATE OF INSURANCE COVER	
A8	TENDERER'S REGISTERED FINANCIAL SERVICE PROVIDER LETTER AND BANK DETAILS	
A9.1	SCHEDULE OF TENDER'S LITIGATION HISTORY	
A9.2	ENVIRONMENTAL, SOCIAL, HEALTH, AND SAFETY PERFORMANCE DECLARATION	
A10	SCHEDULE OF CURRENT COMMITMENTS	

PART T2: RETURNABLE SCHEDULES

T2.1 LIST OF RETURNABLE SCHEDULES

FORM NO / SBD NO	FORM DESCRIPTION	TICK IF COMPLETED
A11	CERTIFICATE OF COMPLIANCE WITH COMPENSATION FOR OCCUPATIONAL INJURIES AND DISEASES ACT, 1993 (ACT NO. 130 OF 1993)	
A12	CERTIFICATE OF REGISTRATION WITH CIDB	
A13	FORM SBD1 – INVITATION TO BID AND TERMS AND CONDITIONS FOR BIDDING	
B1	CONTRACTORS ESTABLISHMENT ON SITE	
B2	SCHEDULE OF SPECIAL MATERIALS	
C1.1	TENDERER'S B-BBEE VERIFICATION CERTIFICATE	
C1.2 / SBD6.1	PREFERENCE POINTS CLAIM FORM IN TERMS OF THE PREFERENTIAL PROCUREMENT REGULATIONS 2017	
C1.3	BLACK OWNERSHIP DECLARATION	
C1.4	SUB-CONTRACTING DECLARATION	
D1	SCHEDULE OF TENDERER'S PLANT AND EQUIPMENT	
D2	TENDERER'S METHOD STATEMENT	
D3	TENDERER'S ORGANISATION AND STAFFING	
D4.1	TENDERER'S KEY PERSONNEL EXPERIENCE (Contracts Director)	
D4.2	TENDERER'S KEY PERSONNEL EXPERIENCE (Contracts Manager)	
D4.3	TENDERER'S KEY PERSONNEL EXPERIENCE (Construction manager (Contractor's Representative))	

PART T2: RETURNABLE SCHEDULES



T2.1 LIST OF RETURNABLE SCHEDULES

D5.1	TENDERER'S EXPERIENCE BASED ON COMPLETED PROJECTS	
D5.2	TENDERER'S EXPERIENCE BASED ON PROJECTS IN PROGRESS	
D6	TENDERER'S INDICATIVE PROGRAMME	
D7	SCHEDULE OF ESTIMATED MONTHLY EXPENDITURE	
D8	SCHEDULE OF SUBCONTRACTORS	
D9	CORPORATE SOCIAL INVESTMENT	
C1.1.1 / SBD7	FORM OF OFFER	
C1.2.3	CONTRACT DATA – INFORMATION PROVIDED BY THE TENDERER	
C2.2 / SBD3	PRICING SCHEDULE	
C.2.3	SUMMARY OF PRICING SCHEDULE	

PART C1: AGREEMENT AND CONTRACT DATA



C1.2.1 CONDITIONS OF CONTRACT

The Conditions of Contract for Construction (**1999 edition**) published by the Federation Internationale des Ingenieurs-Conseils (**FIDIC**), as amended, shall apply to this contract.

PART C1: AGREEMENT AND CONTRACT DATA



C1.2.2 APPENDIX TO TENDER: CONTRACT DATA INFORMATION PROVIDED BY THE EMPLOYER

Notes to tenderer:

1. This form is the equivalent of the Appendix to Tender as defined in Sub-Clause 1.1.1.9 of the FIDIC Conditions of Contract.
2. Clause numbers (Cl. No.) refer to the FIDIC Conditions of Contract.
The prefix A refers to an amendment to these conditions.

<u>Item</u>	<u>Cl No</u>	<u>Data</u>
Employer	1.1.2.2	Means the South African National Roads Agency SOC Limited instituted in terms of the South African National Roads Agency Limited and National Roads Act (Act No. 7 of 1998) or a person delegated by the South African National Roads Agency SOC Limited to act on its behalf.

The Employer's address is:
The South African National Roads Agency SOC Limited
48 Tambotie Avenue
Val De Grace
Pretoria, 0184

PART C1: AGREEMENT AND CONTRACT DATA



C1.2.2 APPENDIX TO TENDER: CONTRACT DATA INFORMATION PROVIDED BY THE EMPLOYER

<u>Item</u>	<u>CI No</u>	<u>Data</u>
Engineer	1.1.2.4	TBA

The engineer's address to be used for this contract is:
TBA

Postal address:
TBA

Email address: **TBA**

PART C1: AGREEMENT AND CONTRACT DATA



C1.2.2 APPENDIX TO TENDER: CONTRACT DATA INFORMATION PROVIDED BY THE EMPLOYER

<u>Item</u>	<u>CI No</u>	<u>Data</u>
Time for Completion	1.1.3.3.	18 months maximum (including the contractor's holidays in December and January), of which 3 months maximum will be the Mobilisation Period .
Defects notification period	1.1.3.7	12 calendar months
Mobilisation Period	A1.1.3.10	3 months maximum commencing on the Commencement Date.
Electronic transmission system	1.3	Email

PART C1: AGREEMENT AND CONTRACT DATA



C1.2.2 APPENDIX TO TENDER: CONTRACT DATA INFORMATION PROVIDED BY THE EMPLOYER

<u>Item</u>	<u>CI No</u>	<u>Data</u>
Law and Language	1.4	The law governing this Contract is South African law and English shall be considered to be the Language of communication
Access to the site	A2.1	As stated in the Form of Acceptance
Performance Security	A4.2	One Performance Security totalling 10% of the Accepted Contract Amount (excluding VAT) are required

PART C1: AGREEMENT AND CONTRACT DATA

C1.2.2 APPENDIX TO TENDER: CONTRACT DATA INFORMATION PROVIDED BY THE EMPLOYER

<u>Item</u>	<u>CI No</u>	<u>Data</u>
Contractor's Representative	4.3	<p>A Contracts Manager shall be; the single point accountability and responsible for the management of the construction works and shall be registered with SACPCMP as PrCM or ECSA as PrEng or PrTechEng or PrTechni with minimum experience of 8 years.</p> <p>Where the powers of the Contracts Manager are delegated to the construction manager, the construction manager shall be registered with SACPCMP as PrCM or ECSA as PrEng or PrTechEng or PrTechni with minimum experience of 5 years.</p>
Subcontractors and suppliers	A4.4	<p>The percentage of the contract value that may be sublet is dependent on the Minimum Targeted Enterprise subletting targets and shall not exceed the Maximum Subcontracting allowed % as per the following table:</p>

Minimum Targeted Enterprise (TE) subletting (%)	Maximum Subcontracting allowed (%)
≤40	60
>40 to <45	65
≥45 to <50	70
≥50	80

PART C1: AGREEMENT AND CONTRACT DATA



C1.2.2 APPENDIX TO TENDER: CONTRACT DATA INFORMATION PROVIDED BY THE EMPLOYER

<u>Item</u>	<u>CI No</u>	<u>Data</u>
Rates of Wages and Conditions of Labour	A6.2	The Contractor and his Subcontractors shall be registered with the Bargaining Council for the Civil Engineering Industry (Government Notice R.490 – Part III contained in Government Gazette No. 37750) and rates for wages and conditions of labour agreed by the Bargaining Council for the Civil Engineering Industry shall apply to the Contractor and all his Subcontractors except where a specific industry publishes its own wage rates and conditions of labour.

PART C1: AGREEMENT AND CONTRACT DATA



C1.2.2 APPENDIX TO TENDER: CONTRACT DATA INFORMATION PROVIDED BY THE EMPLOYER

<u>Item</u>	<u>CI No</u>	<u>Data</u>
Special non-working hours/days	A6.5	<p>(a) All designated public holidays (including all foreseeable statutory declared election days).</p> <p>(b) The annual contractors shut-down period between December and January .</p> <p>(c) Day before Easter Weekend .</p> <p>(d) Day of State school term closure and the day prior State school term start.</p> <p>(e) Other non-working days and restricted working hours: as listed under Clause A8.3(i) and A8.3(m):.</p> <p>(f) Sundays</p> <p>(g) Between sunset and sunrise</p>

PART C1: AGREEMENT AND CONTRACT DATA



C1.2.2 APPENDIX TO TENDER: CONTRACT DATA INFORMATION PROVIDED BY THE EMPLOYER

<u>Item</u>	<u>CI No</u>	<u>Data</u>
Contractor's Personnel	A6.9	<p>The Contractor shall provide the key personnel (as indicated in form C1.2.3 - Appendix to Tender: Contract Data – Information Provided by the Tenderer).</p> <p>Where the key personnel are no longer available to undertake the necessary work after the award of the contract, the Contractor shall within a period of 14 working days replace the key personnel stated in the Appendix to Tender with personnel with equivalent competencies and subject to approval by the Employer. Such approval shall not be unreasonably withheld.</p>
Commencement Date	A8.1	As stated in the Form of Acceptance
Period in which Works must commence	A8.1	Not prior to the date of Access to Site and not later than 1 Month after the end of Mobilisation Period

PART C1: AGREEMENT AND CONTRACT DATA



C1.2.2 APPENDIX TO TENDER: CONTRACT DATA INFORMATION PROVIDED BY THE EMPLOYER

<u>Item</u>	<u>CI No</u>	<u>Data</u>
Programme submission	A8.3	One paper copy and one electronic copy
Date(s) of access	A8.3(b)	As per clause 2.1 Access to site
Special non-working days	A8.3(h)	As per clause 6.5 Working hours
Embargo hours and delays	A8.3(i)	Embargo period for seal work as defined in Part C3: Scope of Works, clause A10.1.3.2

PART C1: AGREEMENT AND CONTRACT DATA



C1.2.2 APPENDIX TO TENDER: CONTRACT DATA INFORMATION PROVIDED BY THE EMPLOYER

<u>Item</u>	<u>CI No</u>	<u>Data</u>
Restricted working conditions	A8.3m	Accommodation of traffic restrictions During the contractor's annual shutdown period between December and January , the contractor shall maintain two-way traffic within the contract limits.

PART C1: AGREEMENT AND CONTRACT DATA



C1.2.2 APPENDIX TO TENDER: CONTRACT DATA INFORMATION PROVIDED BY THE EMPLOYER

<u>Item</u>	<u>CI No</u>	<u>Data</u>
Extension of time for completion	A8.4	An exceptional adverse climatic condition shall be considered where the return period of the climatic condition exceed a return period of 1:10.
Delay damages	A8.7(a)	Delay Damages – R25 000 per calendar day

PART C1: AGREEMENT AND CONTRACT DATA



C1.2.2 APPENDIX TO TENDER: CONTRACT DATA INFORMATION PROVIDED BY THE EMPLOYER

CI No

A8.7(b)
)

Data

Other Non-compliance charges:

- i. **Non-compliance to requirements of clause A8.3(m) for Accommodation of traffic restrictions during contractors annual shutdown period , between December and January-R20 000 /day.**
- ii. **Accommodation of traffic non-compliance as specified in Part C3 clause A1.5.3.7**
 - (a) **Fixed Penalty – R20 000.00/occurrence**

PART C1: AGREEMENT AND CONTRACT DATA



C1.2.2 APPENDIX TO TENDER: CONTRACT DATA INFORMATION PROVIDED BY THE EMPLOYER

CI No

Data

A8.7(b)

Other Non-compliance charges:

(b) Time delay – R2 000.00/hour

iii) Overloading – 2 x Unit Rate of material hauled x overload factor x distance hauled as specified in Part C3 clause A1.7.7. The overload factor is the difference between the

Actual loaded vehicle mass and the Gross vehicle mass.

iv) Contract Participation Targets – Calculated as per D1003.05

v) Contract Skills Development Goal – Calculated as per D1010.05

vi) Subcontracting without disclosure or non-compliance to Subcontract agreement requirements – **up to 10% of the Contract Price**

vii) Layer irregularities

(i) Base-quantity/100m x unit rate x
payment adjustment factor

PART C1: AGREEMENT AND CONTRACT DATA



C1.2.2 APPENDIX TO TENDER: CONTRACT DATA INFORMATION PROVIDED BY THE EMPLOYER

<u>Item</u> Evaluation	<u>CI No</u>	<u>Data</u>
	A12.3	The term "fixed rate item" shall apply to all items of work listed in the Pricing Schedule (Including agreed items of work listed in Works Authorisations).
Provisional Sums	A 13.5	5 % mark-up to apply if no-mark-up is provided in the Pricing Schedule
Daywork allowances	A 13.6	Not required (Dayworks provided for in the pricing schedule)

PART C1: AGREEMENT AND CONTRACT DATA



C1.2.2 APPENDIX TO TENDER: CONTRACT DATA INFORMATION PROVIDED BY THE EMPLOYER

<u>Item</u>	<u>CI No</u>	<u>Data</u>
Special materials	A13.8	Bitumen binder extracted from petroleum based products and used on site. Including that used in asphalt, irrespective of whether it is produced and/or placed by the contractor or an approved sub-contractor
Adjustments for changes in cost	A 13.8	Roadworks x = 0.15 (a)=0.20 (b)=0.35 (c)=0.35 (d)=0.10 "L" is the consumer price index for the Eastern Cape Province

PART C1: AGREEMENT AND CONTRACT DATA



C1.2.2 APPENDIX TO TENDER: CONTRACT DATA INFORMATION PROVIDED BY THE EMPLOYER

<u>Item</u>	<u>CI No</u>	<u>Data</u>
Retention money:		
Percentage	A14.3(c)	10% of value of completed work
Limit	A14.3(c)	5% of the Accepted Contract Amount (Including VAT).
Guarantee	A14.3(c)	This will be considered provided that the tenderer submits his proposal as an alternative tender indicating what discount he proposes to give.
Minimum amount of interim payment certificate	A14.6	R2 000 000 excluding payments during the Mobilisation Period

PART C1: AGREEMENT AND CONTRACT DATA



C1.2.2 APPENDIX TO TENDER: CONTRACT DATA INFORMATION PROVIDED BY THE EMPLOYER

<u>Item</u>	<u>CI No</u>	<u>Data</u>
Minimum insurance cover for Injury to persons and Damage to Property	A18.3	R 20,000,000.00

PART C1: AGREEMENT AND CONTRACT DATA



C1.2.2 APPENDIX TO TENDER: CONTRACT DATA INFORMATION PROVIDED BY THE EMPLOYER

<u>Item</u>	<u>CI No</u>	<u>Data</u>
Appointment of DAB	A20.2	i) The DAB shall comprise of 1 Member and its appointment to be not later than 30 days after Access to Site, or in the event that a dispute arises prior to Access to Site, not later than 30 days after a dispute arises between the Parties

PART C3: PROJECT SPECIFICATION AMENDMENTS TO THE COTO STANDARD SPECIFICATIONS DATA



SECTION B3: SPECIFICATION DATA

<u>Section</u>	<u>CL No</u>	<u>SPECIFICATION DATA</u>
C	C1004 d)	DEO means: Designated Environmental Officer
D - Targeted Labour	D1002.01	For Targeted Labour: The PLC appointed for the project shall provide guidance regarding the target area for sourcing Labour.
D - CPG for Target Labour	D1003.04	
Target Groups:		
i) Youth		30% of targeted labour value
ii) Disability		0.3% of targeted labour value
iii) Women		30% of targeted labour value

PART C3: PROJECT SPECIFICATION AMENDMENTS TO THE COTO STANDARD SPECIFICATIONS DATA



SECTION B3: SPECIFICATION DATA

<u>Item</u>	<u>CI No</u>	<u>Data</u>
Contract Participation Goals (CPG)	D1003(d)	
Targeted Labour of which minimum contributions by		Minimum of 6 % of the Final Contract Value

PART C3: PROJECT SPECIFICATION AMENDMENTS TO THE COTO STANDARD SPECIFICATIONS DATA



SECTION B: SPECIFICATION DATA

<u>Section</u>	<u>CL No</u>	<u>SPECIFICATION DATA</u>
CPG for Targeted Enterprise	D1003.04	<p>Minimum of 6% of the Final Contract Value by the end of the contract to Targeted Labour</p> <p>Targeted Labour appointed for the Community Development work shall not contribute towards the CPG for Targeted Labour.</p> <p>The Final Contract Value is defined in clause D1003.04</p>

PART C3: PROJECT SPECIFICATION AMENDMENTS TO THE COTO STANDARD SPECIFICATIONS DATA



SECTION B: SPECIFICATION DATA

<u>Item</u>	<u>CI No</u>	<u>Data</u>
Contract Participation Goals (CPG)	D1003.04	
Targeted Enterprise		Minimum of (40 %) of the contract value to Targeted Enterprises
i) Targeted Enterprise with ≥51% ownership by Youth		Minimum of 5 % of the Final contract value
ii) Targeted Enterprise with ≥51% ownership by Women		Minimum of 5 % of the Final contract value
iii) Targeted Enterprise with ≥51% ownership by military veterans		Minimum of 1 % of the Final contract value

PART C3: PROJECT SPECIFICATION AMENDMENTS TO THE COTO STANDARD SPECIFICATIONS DATA



C1.2.2 APPENDIX TO TENDER: CONTRACT DATA INFORMATION PROVIDED BY THE EMPLOYER

<u>Item</u>	<u>CI No</u>	<u>Data</u>
Contract Participation Goals (CPG)	D1003(d)	
iv) Targeted Enterprise with ≥51% ownership by Differently abled persons		Minimum of 0.5 % of the Final contract value
v) Targeted Enterprise with CIDB 1 or 2 grading		Minimum of 5 % of the Final contract value
vi) Targeted Enterprise with CIDB 3 or 4 grading		Minimum of 5 % of the Final contract value

PART C4: SITE INFORMATION

Information Only: All data and descriptions contained in this section of the contract documents are given *for information purposes only* and cannot be interpreted as prescriptive or as an instruction despite the fact that the text may give the opposite perspective. If any conflict arises between the content of this section and other sections of the contract documents, the latter take precedence.

C4.1 DESCRIPTION OF THE WORKS



PART C4: SITE INFORMATION



Information Only: All data and descriptions contained in this section of the contract documents are given for information purposes only and cannot be interpreted as prescriptive or as an instruction despite the fact that the text may give the opposite perspective. If any conflict arises between the content of this section and other sections of the contract documents, the latter take precedence.

C4.1 DESCRIPTION OF THE WORKS

R62 is located in the Eastern Cape Province and falls under the Kou-Kamma Local Municipality, in the Sarah Baartman District. The project is 21.85 kilometers in length from the Western Cape border (km 36.75) to the Louterwater River (km 58.60). It is a single carriageway, with a total surface with between 6.6m and 6.8 and approximately 1.5m gravel shoulders. The current surfacing is a surfacing seal.

The objective is to rehabilitate the existing carriageway and prolong the life of the road way for a further 15 years, as the R62 is an important link road connecting two provinces and also an important agricultural route, provide access to numerous farms.

PART C4: SITE INFORMATION



C4.1.2 PAVEMENT DESIGN FOR ALL PARTS OF THE VARIOUS ROADS

Rehabilitation

Strengthening and maintenance works of this section will be in the form of:

- a) Drain clearing
- b) Base Repairs (BSM)
- c) Reseal
- d) Anti-erosion grass blocks

Seal surfacing:

Proposed

20mm/10mm Double

Seal

PART C4: SITE INFORMATION



C4.1.2 PAVEMENT DESIGN FOR ALL PARTS OF THE VARIOUS ROADS

Widening

The shoulders of the road will be widened. The widening will have a stepped pavement structure with a width of approximately 1000 mm at the subgrade and 600 mm for the surfacing. The depth ranges from 620 mm to 770 mm, depending on the adjacent road pavement layerworks. The details of the pavement structures is as per Drawing A1.

The scope entails:

- Clearing and grubbing of the widened area;
- Excavation of the in-situ material to a depth ranging from 620mm to 770 mm as indicated on Drawing A1;
- If moisture is detected at the bottom of the excavation, the material will be removed to a depth of 500 mm and replaced with rockfill;
- Construct a 150mm G7 subgrade layer;
- Construct a 300 mm G4 subbase layer;
- Construct a BSM1 base layer ranging in thickness from 150mm to 300mm. The BSM1 layer shall be recycled together with a portion of the existing pavement as shown on Drawing A2;
- Construct a 20/10 double seal.

PART C4: SITE INFORMATION



A) EXISTING PAVEMENT CONDITIONS

The width of the paved surface varies from 6.6m to 6.8m. There are no surfaced shoulders.

The thickness of the bituminous surfacing is variable ranging from 45 mm to 70 mm.

The material in the base layer consists of a, medium dense, gravelly sandstone ranging from G5 to G7 in quality, but mostly of G5 quality. The subbase is of a similar variable quality.

The subgrade consists of a gravelly sandstone and clayey sandy gravel with quality varying from G7 to G10.

PART C4: SITE INFORMATION



C4.1.2 COMMUNITY DEVELOPMENT WORK

work items have been identified as being suitable for execution by Targeted Enterprises:

- a) Erection and maintenance of the Contractor's camp site
- b) Clearing and grubbing.
- c) Provision of traffic control facilities.
- d) Management of traffic control facilities and traffic safety as part of the accommodation of traffic.
- e) Clearing of drains.
- f) Road markings.
- g) Site Security Services.
- h) Haulage of materials
- i) Supply of plant.
- j) Supply of fuel.
- k) Specialised subcontract work such as:
 - i) Crushing of materials.
 - ii) Earthworks, layerworks construction.

PART C4: SITE INFORMATION



C4.1.2 COMMUNITY DEVELOPMENT WORK

Work suitable for execution by CIDB CE1 and CE2 Targeted Enterprises includes:

- a) Clearing and grubbing.
- b) Clearing of drains.
- c) Site Security Services (consider Military Veterans if identified by Empowerment Impact Assessment).
- d) Suppliers (PPE, Plant small tools, bitumen, gravel etc.)
- e) Transportation of Labour (Local taxi associations)
- f) Any other work identified by the Employer to be executed in the Target Area.

PART C4: SITE INFORMATION



C4.1.4 MAINTENANCE WORKS

There is a current Routine Road Maintenance contract of SANRAL, executing maintenance tasks on the R62.

The details available for this contract are as follows:

Route Manager: Johan Nel - Q&A Consulting

Cell: 082 612 1980

PART C4: SITE INFORMATION



C4.3 CONSTRUCTION CONSIDERATIONS

SITE ESTABLISHMENT

The contractor is to make his own arrangements concerning the supply of electrical power and all other services. No direct payment will be made for the provision of electrical and other services. The cost thereof is deemed to be included in the rates and amounts tendered for the various items of work for which these services are required.

The contractor himself shall provide a suitable site for his camp and for accommodating his labourers.

QUESTIONS ?

Contact information



CONTACT NO. + 27 (41) 398 3200

EMAIL ProcurementSR3@sanral.co.za