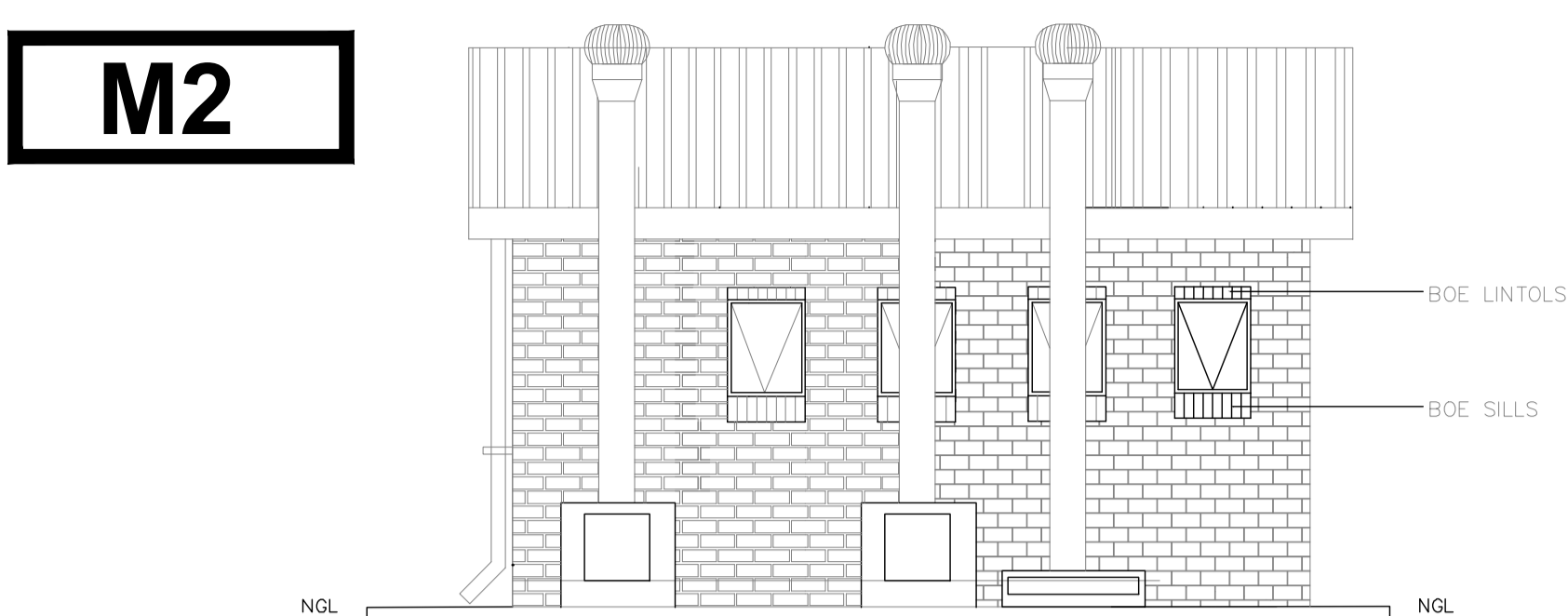


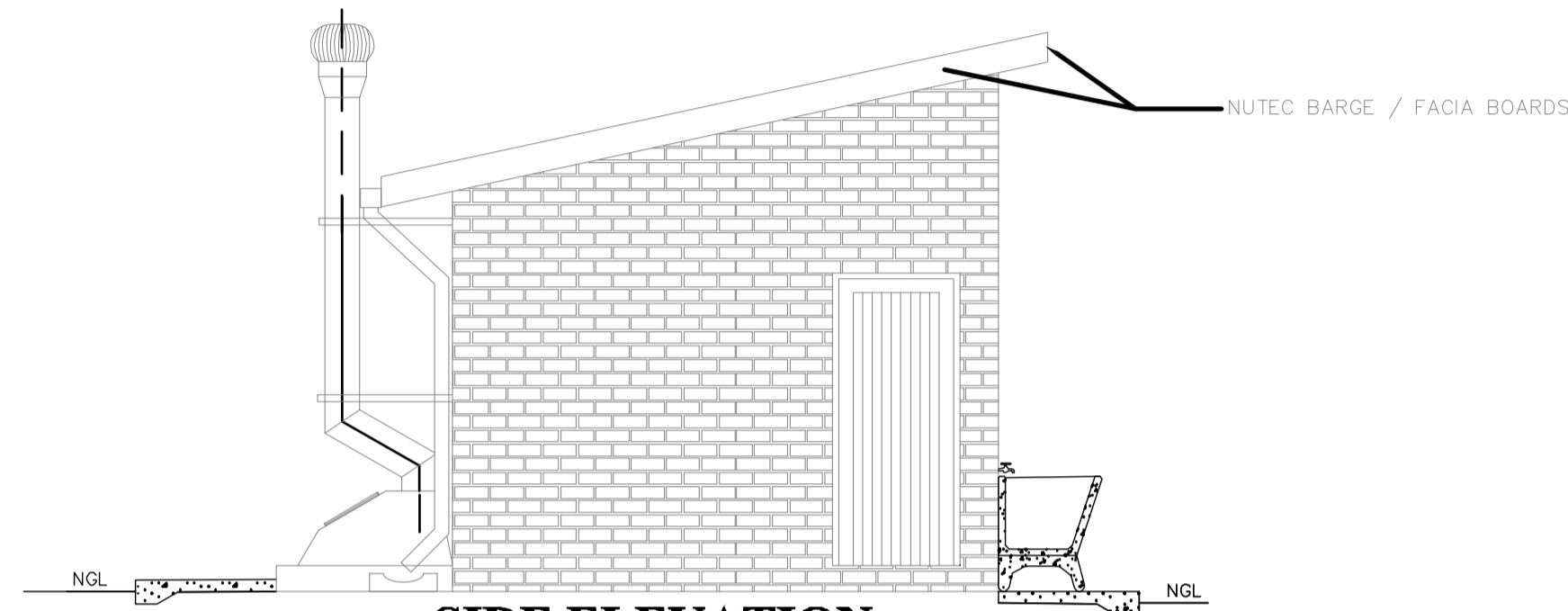
M2



BACK ELEVATION

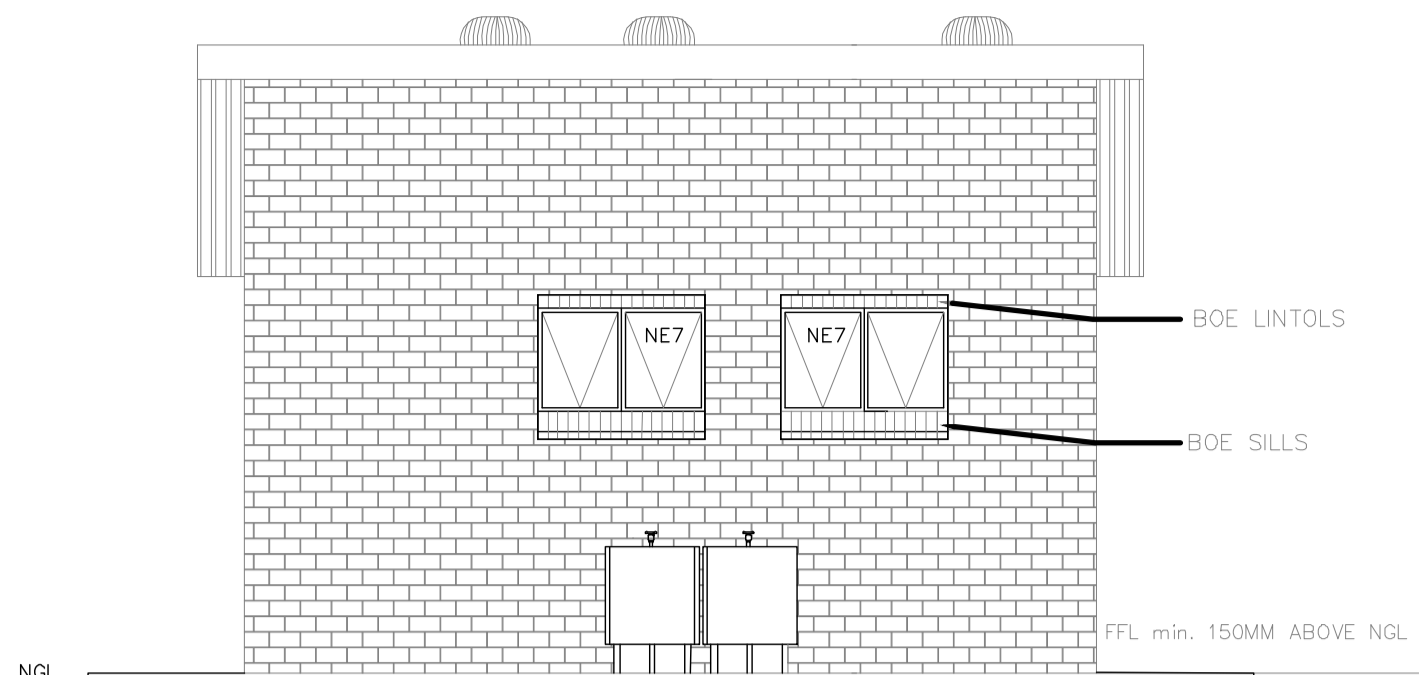
SCALE 1:150

NOTE:
ENVIRO LOO INSTALLATION
AS PER MANUFACTURER'S
SPECIFICATION AND DETAILS



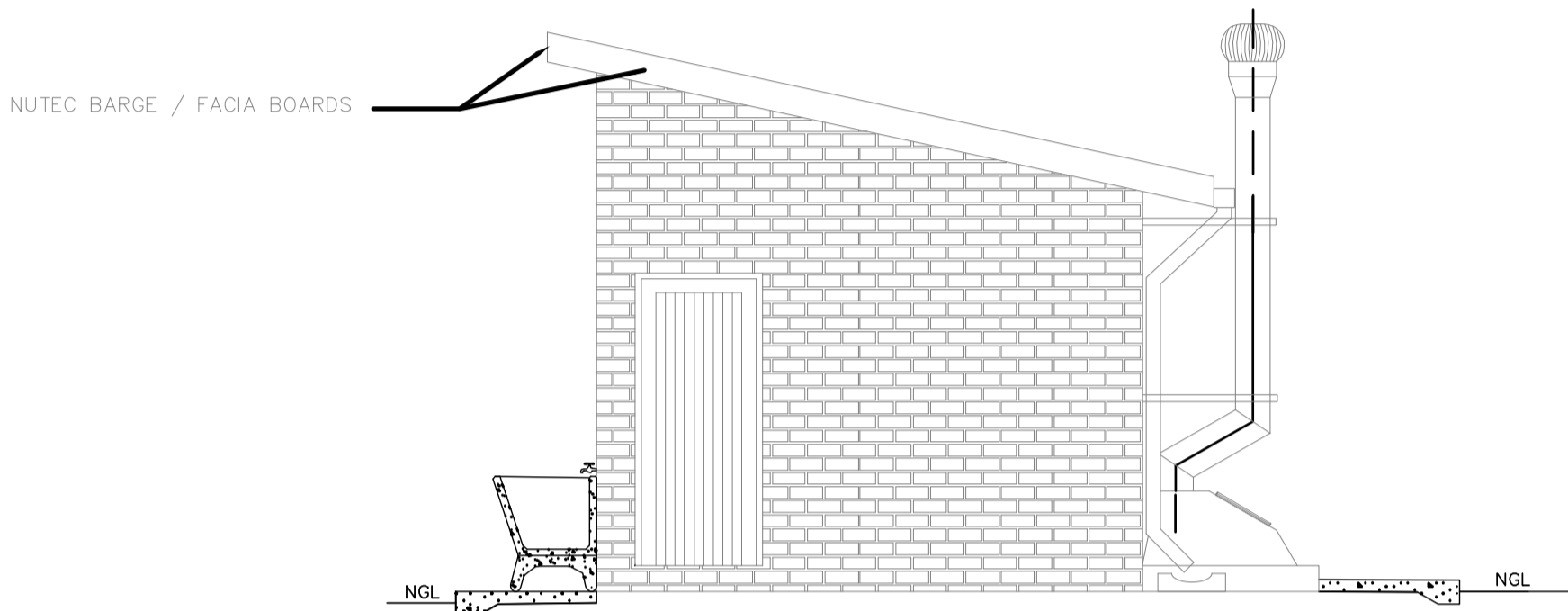
SIDE ELEVATION

SCALE 1:150



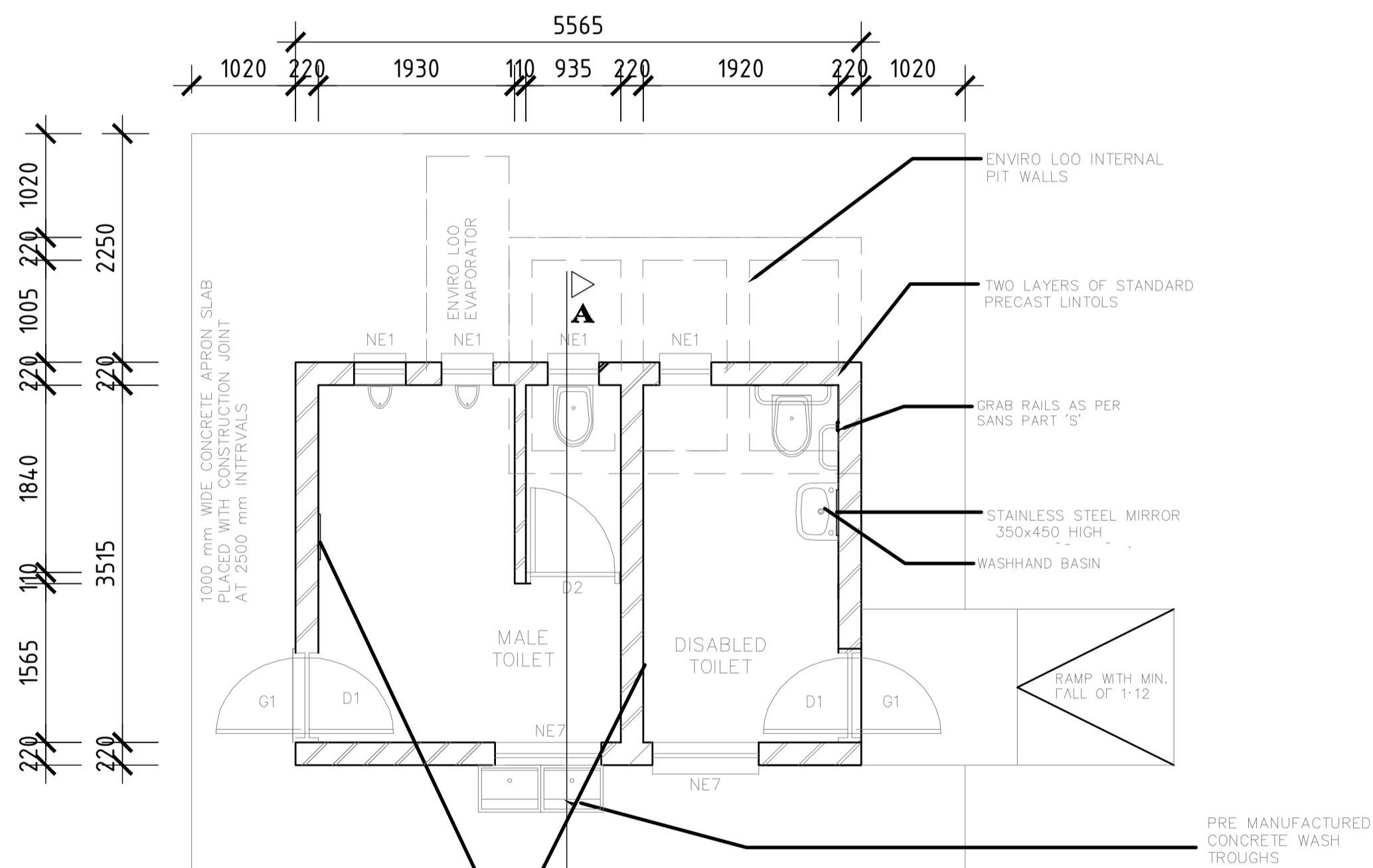
FRONT ELEVATION

SCALE 1:150



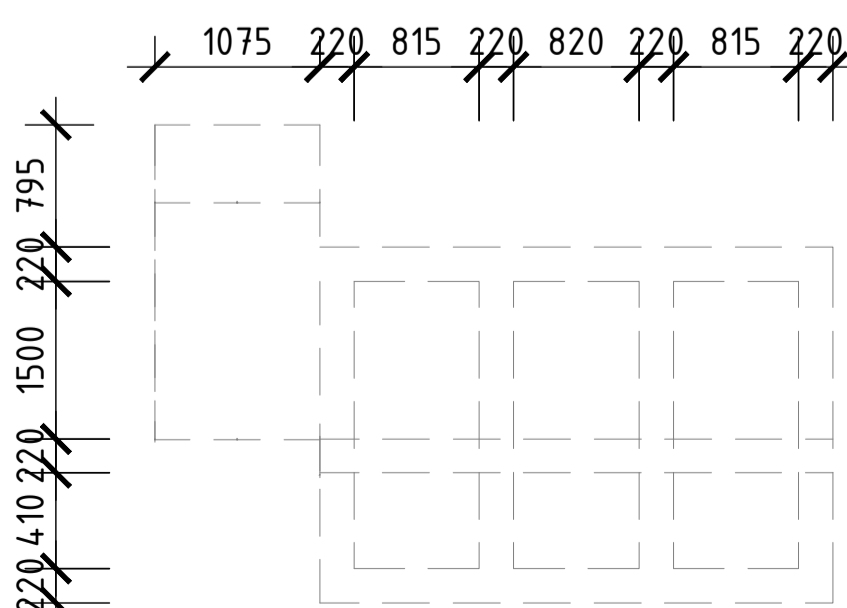
SIDE ELEVATION

SCALE 1:150



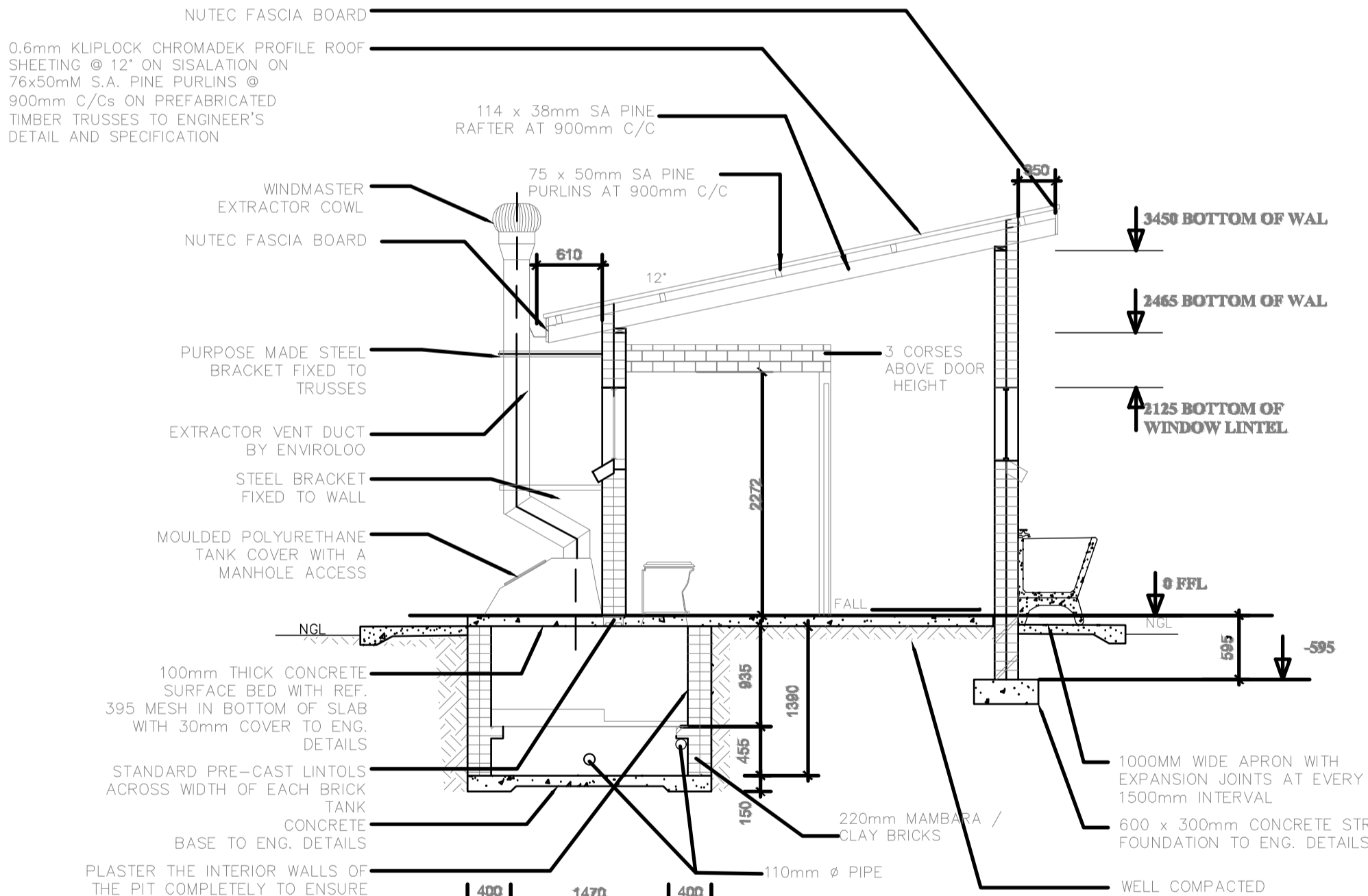
FLOOR PLAN

SCALE 1:150



TANK PLAN

SCALE 1:50



SECTION A-A

SCALE 1:150

GENERAL NOTES:

- ALL WORK TO BE CARRIED OUT IN ACCORDANCE WITH THE NATIONAL BUILDING REGULATION AND SABS 0400 OF 1990
- CONTRACTOR TO READ ONLY FIGURED DIMENSION
- CONTRACTOR TO VERIFY ALL DIMENSION ON SITE BEFORE COMMENCING WITH ANY WORK.

WINDOW SCHEDULE	
WINDOW NO.	N2
CATALOGUE	NE7
FRAME	1022 x 654mm HIGH STANDARD STEEL WINDOW FRAME
FRAME FINISH	SPOT PRIME DETECTS IN PRE-PRIME SURFACE WITH ZINC CHROMATE PRIMER & APPLY ONE UNIVERSAL UNDER COAT & TWO COATS EPWP GOLDEN BROWN GLOSS ENAMEL PAINT ON STEEL
GLAZING	6.38mm OBSCURE SAFETY GLASS
NO. REQUIRED	2

ENTRANCE DOOR	
FRAME TYPE	SINGLE REBATE STEEL FRAME TO FIT 220mm WALL (D1)
FRAME FINISH	PRIME AND PAINT UNDERCOAT AND 2 COATS GLOSS ENAMEL - COLOUR TBC
DOOR LEAF	4mm FRAMED LEDGED AND BRACED DOOR SIZE 813x2032mm INCLUDING EXTERNAL WEATHER BAR
LEAF FINISH	UNDER COAT AND MINIMUM 2 COATS GLOSS ENAMEL - COLOUR TBC
LOCK	1 LEVER MORTICE LOCK SET
IRONMONGERY	100mm BRACE CABIN HOOK

WINDOW SCHEDULE	
WINDOW NO.	N1
CATALOGUE	NE1
FRAME	533 x 654mm HIGH STANDARD STEEL WINDOW FRAME
FRAME FINISH	SPOT PRIME DETECTS IN PRE-PRIME SURFACE WITH ZINC CHROMATE PRIMER & APPLY ONE UNIVERSAL UNDER COAT & TWO COATS EPWP GOLDEN BROWN GLOSS ENAMEL PAINT ON STEEL
GLAZING	6.38mm OBSCURE SAFETY GLASS
NO. REQUIRED	4

CUBICLE DOOR	
FRAME TYPE	SINGLE REBATE STEEL DOOR FRAME - SIZE 813x53mm (FRAME UNDERCUT TO 150mm)
FRAME FINISH	PRIME AND PAINT UNDERCOAT AND 2 COATS GLOSS ENAMEL - COLOUR TBC
DOOR LEAF	4mm FRAMED LEDGED EMBRACED DOOR SIZE 813x2032mm (DOOR RAISE BY 150mm TO TOP OF FRAME)
LEAF FINISH	UNDER COAT AND MINIMUM 2 COATS GLOSS ENAMEL - COLOUR TBC
LOCK	INLET INDICATOR LOCK
IRONMONGERY	100mm CHROME PLATED "D" TYPE HANDLE 3 1/2" SOLID BRACE HINGES

BUGLAR DOOR	
TYPE	G1 2 OFF
POSITION	EXTERNAL TOILET BLOCK
DOOR TYPE	PURPOSE MADE SQUARE HOLLOW SECTION WILD STEEL SECURITY GATE
DOOR FINISH	1xCOAT ZINC CHROMATE PRIMER MINIMUM 2 x COATS GLOSS ENAMEL (EXTERNAL QUALITY)
FRAME	20x28x1.6mm M/S RECTANGULAR HOLLOW SECTION FRAME
FRAME FINISH	1xCOAT ZINC CHROMATE PRIMER MINIMUM 2 x COATS GLOSS ENAMEL (EXTERIOR QUALITY)
DOOR	18x28x1.6mm RECTANGULAR HOLLOW SECTION FRAME WITH 25x25x1.6 INTERLOCKERS AT 100mm CENTERS AT 45° ANGLE COLOUR TBC
IRONMONGERY	SECURITY DOUBLE THROW DEAD LOCK (NO LATCH)

NOTES AND SPECIFICATIONS:

- GENERAL
- Use dimensions provided and do not scale drawing.
 - All work to comply with SANS, PW371 and SABS.
 - All dimensions, levels and positions to be verified on site prior to construction.
 - All concrete work to be as per Engineer's details and specifications.
 - All pits to face North.
 - All brickwork have brickforce at every 2nd course in pit lining and 3rd course in superstructure.

PIT EXCAVATION

- All stages of pit excavation to be inspected and approved by Engineer and signed off.
- All pit lining to be inspected by EnviroLoo Services before slab casting.

COMPACTION OF SURFACES

All ground surfaces receiving concrete floors / slab should be compacted to 150mm layers 93% ModAASHTO density before casting concrete.

CONCRETE WORKS

- All concrete to be as per Engineer's details and specifications.
 - 25 MPa strength concrete to be used throughout construction.
- Trial Concrete Mixes: Proportions
- Concrete Strength at 28 Days 25Mpa:
- 1 : 2 : 2 (mix proportion by volume)
- 1 bag cement : 0.08m³ Sand : 0.09m³ Stone (Volume/Bag)
- 355 kg cement : 820 kg sand : 960 kg stone (Mass/m³)
- Pre-cast concrete lintels to be used as support under top slab of pit.
 - All concrete aprons to be 1000mm wide..

MORTAR

- Mixed proportions to be:
- 1 cement : 3 sand
- (i.e.1 bag cement : 3 wheelbarrows (37 litres) sand)

BRICKWORK

- Sub-structure
- All pit lining / foundation brickwork to be solid NFP clay brick.
 - All internal surface of pit lining to be pointed with two coats black epoxy point installing Enviro-Loo units.

Super-structure

- All external walls / partitions to be of clay face brick to SABS quality.
- All cubicle partition walls to be 3 courses above door height.
- All brickwork above door openings should have brickforce on every course at least 3 courses.
- Air bricks: Standard 230X152mm terra-cotta vermin proofed louvered air grating to be used above all window openings.

ROOF SHEETING

- 0.6mm Kliplock chromadek roof sheeting.

ROOF TIMBER / CEILING

- All roof timbers to be machined SABS treated wood with three coats of approved wood preservative.
- Timber connections (Hurricane Clips) are required all intercessions between timber rafters and purlins.
- Slatation is to be applied interval under all roof surfaces.

METALWORK

- All metalwork should be primed before installation.
- All steel window should have 6x20mm flat bar burglar proofing.

PLUMBING

- Double concrete wash trough to be used.
- All wash troughs should be connected to the school's water supply system and the waste water should be piped to a soakaway.
- The soakaway should be as per Engineer's detail and position to be determined on site.
- Only 20mm and galvanised pipework should be used as connection from wall to the discharge points.

GLAZING

- 6.38mm obscure safety glass
- Stainless steel mirrors size 350x450mm high.

PAINTING

- All pointwork to comply with SABS and PW371 specification.
- All steel window and door frames including doors and fascia / barge boards to be discharge points.

GENERAL NOTES:

- ALL DIMENSIONS AND LEVELS ARE TO BE VERIFIED ON SITE PRIOR TO COMMENCING SETTING OUT, WORKSHOP DRAWINGS OR CONSTRUCTION .
- FIGURED DIMENSIONS ONLY TO BE USED .
- DISCREPANCIES , ERRORS AND OMISSIONS ARE TO BE REPORTED TO ARCHITECTS IMMEDIATELY THEY BECOME EVIDENT .
- SHOP DRAWINGS TO BE SUBMITTED FOR APPROVAL PRIOR TO MANUFACTURE OR INSTALLATION .
- COPYRIGHT AND RIGHT OF REPRODUCTION OF THIS DRAWINGS OR ANY PORTION THEREOF IS RESERVED MIA ARCHITECTS .

Revisions During Construction

Rev # : Issue Date : Revision description : Sign :

Rev # : Issue Date : Revision description : Sign :

Rev # : Issue Date : Revision description : Sign :

Rev # : Issue Date : Revision description : Sign :

Rev # : Issue Date : Revision description : Sign :

Rev # : Issue Date : Revision description : Sign :

Rev # : Issue Date : Revision description : Sign :

Rev # : Issue Date : Revision description : Sign :

Rev # : Issue Date : Revision description : Sign :

Rev # : Issue Date : Revision description : Sign :

Rev # : Issue Date : Revision description : Sign :

Rev # : Issue Date : Revision description : Sign :

Rev # : Issue Date : Revision description : Sign :

Rev # : Issue Date : Revision description : Sign :

Rev # : Issue Date : Revision description : Sign :

Rev # : Issue Date : Revision description : Sign :

Rev # : Issue Date : Revision description : Sign :

Rev # : Issue Date : Revision description : Sign :

Rev # : Issue Date : Revision description : Sign :

Rev # : Issue Date : Revision description : Sign :

Rev # : Issue Date : Revision description : Sign :

Rev # : Issue Date : Revision description : Sign :

Rev # : Issue Date : Revision description : Sign :

Rev # : Issue Date : Revision description : Sign :

Rev # : Issue Date : Revision description : Sign :

Rev # : Issue Date : Revision description : Sign :

Rev # : Issue Date : Revision description : Sign :

Rev # : Issue Date : Revision description : Sign :

Rev # : Issue Date : Revision description : Sign :

Rev # : Issue Date : Revision description : Sign :

Rev # : Issue Date : Revision description : Sign :

Rev # : Issue Date : Revision description : Sign :

Rev # : Issue Date : Revision description : Sign :

Rev # : Issue Date : Revision description : Sign :

Rev # : Issue Date : Revision description : Sign :

Rev # : Issue Date : Revision description : Sign :

Rev # : Issue Date : Revision description : Sign :

Rev # : Issue Date : Revision description : Sign :

Rev # : Issue Date : Revision description : Sign :

Rev # : Issue Date : Revision description : Sign :

Rev # : Issue Date : Revision description : Sign :

Rev # : Issue Date : Revision description : Sign :

Rev # : Issue Date : Revision description : Sign :

Rev # : Issue Date : Revision description : Sign :

Rev # : Issue Date : Revision description : Sign :

Rev # : Issue Date : Revision description : Sign :

Rev # : Issue Date : Revision description : Sign :

Rev # : Issue Date : Revision description : Sign :

Rev # : Issue Date : Revision description : Sign :

Rev # : Issue Date : Revision description : Sign :

Rev # : Issue Date : Revision description : Sign :

Rev # : Issue Date : Revision description : Sign :

Rev # : Issue Date : Revision description : Sign :

Rev # : Issue Date : Revision description : Sign :

Rev # : Issue Date : Revision description : Sign :

Rev # : Issue Date : Revision description : Sign :

Rev # : Issue Date : Revision description : Sign :

Rev # : Issue Date : Revision description : Sign :

Rev # : Issue Date : Revision description : Sign :

Rev # : Issue Date : Revision description : Sign :

Rev # : Issue Date : Revision description : Sign :

Rev # : Issue Date : Revision description : Sign :

Rev # : Issue Date : Revision description : Sign :

Rev # : Issue Date : Revision description : Sign :

Rev # : Issue Date : Revision description : Sign :