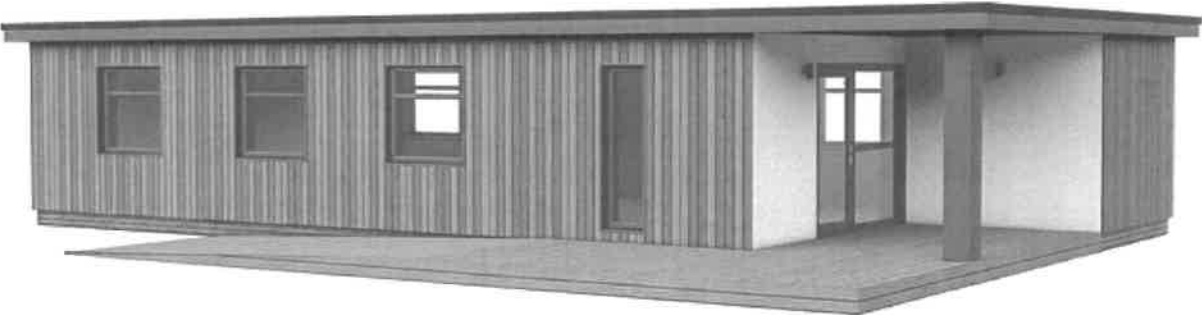
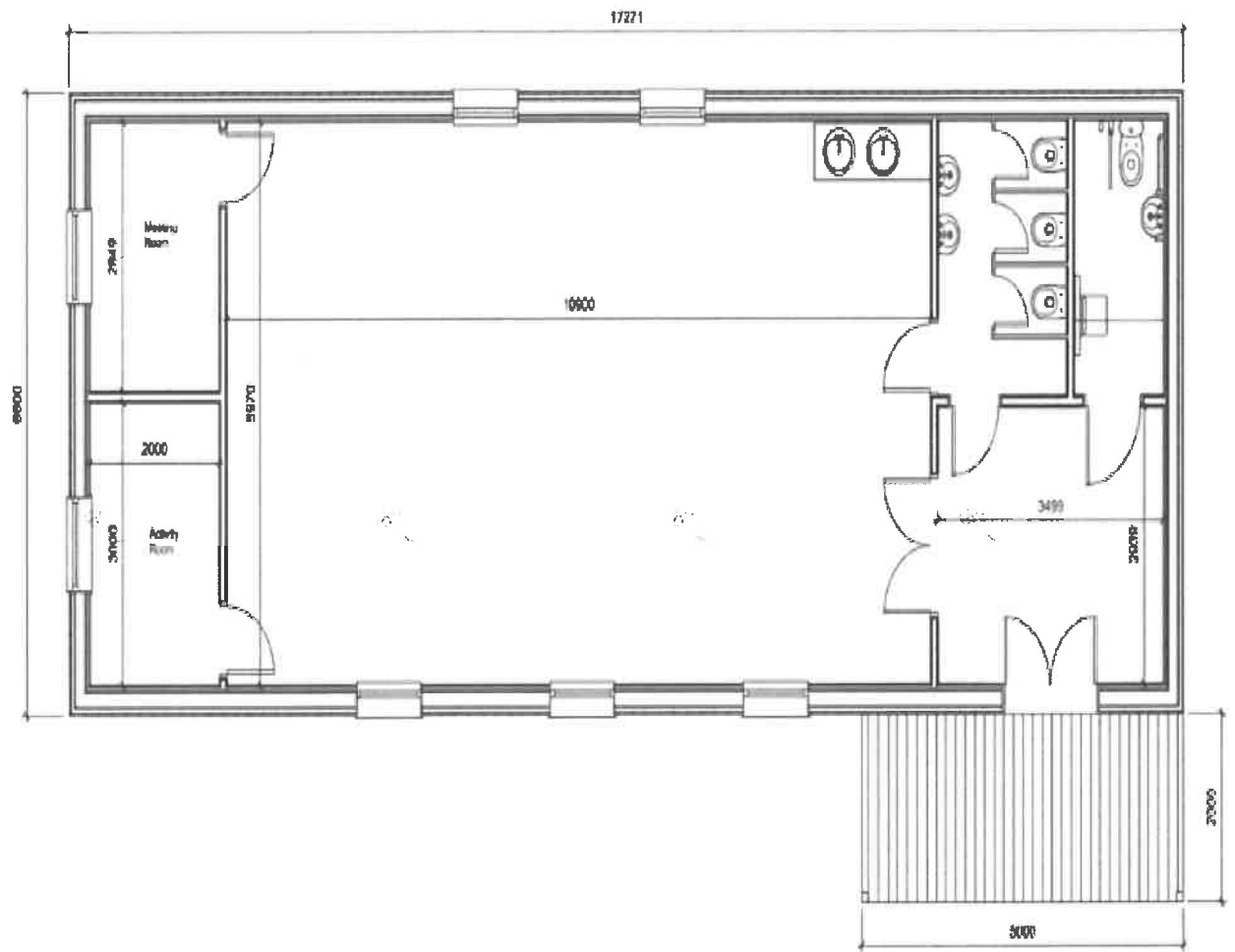


TOURISM PRACTICUM ROOM



FLOOR PLAN



Prepared by:

PM MTAMZELI: PROGRAM MANAGER; TOURISM

Specifications

A prefab classroom for 50 students in South Africa requires a modular unit of roughly 50-60 m², often designed as a 12m×3.5m or 7m×7m double-wide unit. Key specifications include insulated steel sandwich panels (50-100mm), aluminum windows, security doors, and electrical fittings, with built-in office and storage space partitioned within.

Recommended Specifications for 50-Student Unit

- **Main Classroom Area:** Standardized to accommodate 40–50 learners, fitted with whiteboards, pinboards, electrical points, and lighting.
- **Built-in Office:** Partitioned space for teachers, often including data points and extra electrical sockets. (3m x 3.5m)
- **Storage Unit:** Secure, lockable storage area for equipment. 3m x 2m
- **Optional Amenities:** Air conditioning, ceiling fans, blinds, and burglar bars.
- **Structure:** Heavy-duty Q235 steel frame (4mm), insulated with 50mm to 100mm EPS or Rockwool for heat/sound.
- **Interior Layout:** Partitioned area for an office (approx. 3m×3m) and storage shelving.
- **Flooring:** 18mm cement board with 1.8mm heavy-duty industrial vinyl.
- **Walls & Ceiling:** 0.5mm steel sheet, insulated panels. Peach
- **Windows & Doors:** Aluminum-framed, sliding windows (800mm×1100mm) with optional burglar bars. Security doors (900mm×2100mm).
- **Electrical:** DB board, 2-4 LED light fittings, 3-4 double plug sockets, 1 switch.
- **Foundation:** Placed on pre-cast concrete plinths (no traditional foundation required).
- **Optional Extras:** Air conditioning unit, insulation, ramp access, whiteboards.
- **Walls/Office:** Internal partitions can be added to create a dedicated office and storage area.
- **Storage:** Integrated shelving or custom-built storage cupboards in the office section.



Zone D. Gwadana Drive, Ezibeleni
Private Bag X7110, QUEENSTOWN
Tel: 047 873 8811

1. This Tender estimated value

2. EVALUATIONS METHODOLOGY

All bids received will be evaluated in the following phases:

- **Phase 1: Responsive Criteria**

The minimum requirements that must be satisfied or met by prospective bidders in order to pass to the next stage of the evaluations are:

- ▶ SARS Tax Pin
- ▶ CSD Registration summary
- ▶ Certified copy of CK or Registration Documents;
- ▶ Original or Certified copy of BBBEE Certification or affidavit
- ▶ Latest Municipal Account (to confirm address and existence of provider)
- ▶ Complete all Standard Bids Documents (SBD);

- **Phase 2: Functionality Criteria**

- ▶ A panel will evaluate all tenders received on the functionality criteria as reflected. The best proposals will be identified, based on the scores allocated with regards to functionality. A bidder that scores less than sixty (70%) in respect of "functionality" will be regarded as non-responsive and will be disqualified.
- ▶ For purposes of comparison and in order to ensure a meaningful evaluation, bidders are requested to furnish detailed information in substantiation of compliance to evaluation criteria.

Criteria	Weight
FINANCIAL STANDING: Audited Financial statements for the past 3 years.	10

A better future with **IKHALA**



50	<p>EXPERIENCE: The bidder must have performed or being appointed to do similar projects. Written signed contactable testimonials of completed projects.</p> <p>5 reference letters = 50 points 4 reference letters = 40 points 3 reference letters = 30 points 2 reference letters = 20 points 1 reference letters = 10 No letter submitted = 0 points</p> <p>10 points for each letter submitted. Submission of fraudulent letters will tantamount to disqualification.</p>
40	<p>METHODOLOGY: The bidder to submit a detailed proposal on the bidder to submit a detailed proposal catering methods of and timframes for ordering procedures, delivery procedures, returns</p>
100	<p>TOTAL</p> <p>involved and do oversight control these activities suppliers and project management, and how to procedure, logistical arrangements, time lines, returns</p>