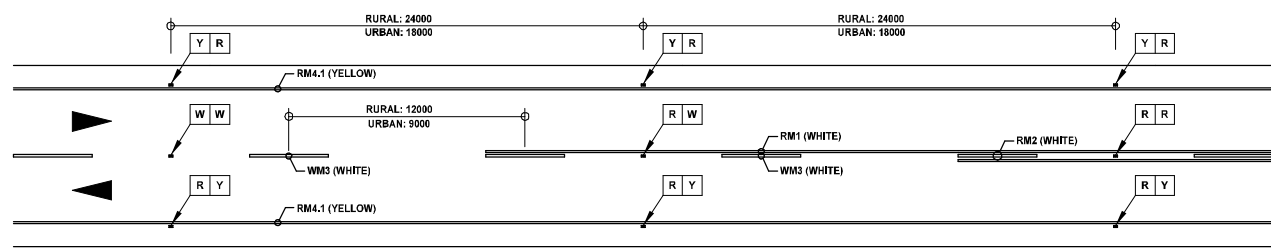


**TYPICAL ROAD MARKINGS AT JUNCTION AND POSITIONS OF ROAD SIGNS**

N.T.S.



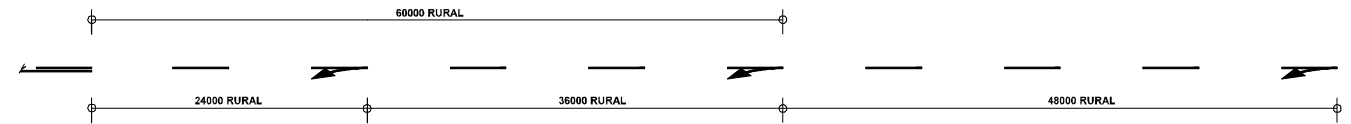
**NOTE:**  
80mm PREFERRED SEPARATION BETWEEN ROAD MARKINGS AND ROAD STUDS.

**COLOUR CODING:**

R	RED
Y	YELLOW
W	WHITE

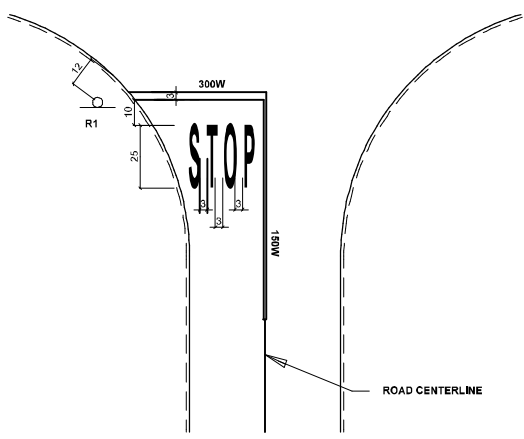
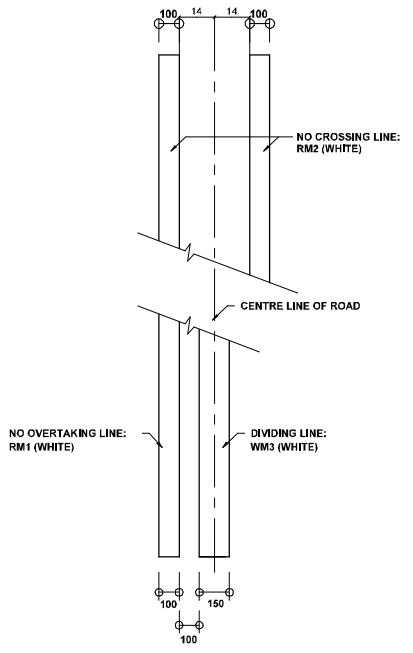
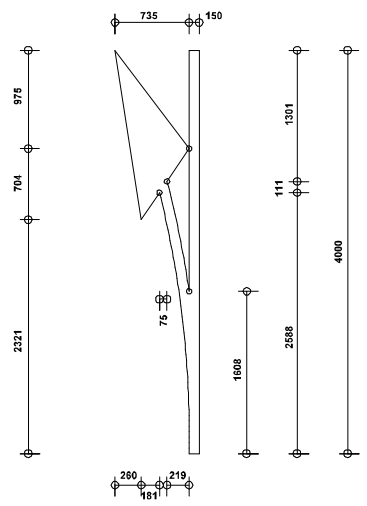
**TYPICAL ROADSTUD USE ON TWO-WAY ROADS**

N.T.S.



**NO OVERTAKING LINE AHEAD ARROWS WM8**

N.T.S.



**TYPICAL DETAIL OF STOP MARKING**

N.T.S.

**NOTES:**

1. ROADSTUDS MUST OF S99 TYPE OR SIMILAR APPROVED
2. ONLY APPROVED MACHINES MAY APPLY ROAD MARKING PAINT.
3. PAINT SHALL ONLY BE APPLIED TO SURFACES THAT ARE CLEAN, DRY AND COMPLETELY FREE FROM ANY SOIL, GREASE, OIL, ACID OR ANY OTHER MATERIAL WICH WILL BE DETRIMENTAL TO THE BOND BETWEEN PAINT AND SURFACE.
4. ROAD MARKING SHALL BE COMPLETED BEFORE A SECTION OF ROAD IS OPENED TO TRAFFIC.

No	DATE	REVISION	CONSUL	DIR

DESIGNED BY	WM
CHECKED BY	TN
DRAWN BY	WM
CHECKED BY	TN

<b>Kago Consulting Engineers</b>  P O BOX 2576 TZANEEN 0955 TEL : (015) 306 0014 FAX : (015) 307 4988 e-mail : kagocon@kago.co.za
--

<b>EPHRAIM MOGALE LOCAL MUNICIPALITY</b>  P O Box 111 Marble Hall 0450 Tel : 013 261 8400 Fax : 013 261 2985
--

MUN. MANAGER EMLM DATE
CONSULTING ENGINEER DATE

PROJECT No: EPML 8/3/427
DICHOEUNG INTERNAL STREET
ROAD MARKING DETAILS

AS BUILT PLAN	SHEET 1 OF 1
SCALE	AS SHOWN
CONSULTANTS DRAWING NUMBER	EMLM DRAWING NUMBER
KG2022/74/07	8/3/342/07

DRAWING NUMBER: KG2022/74/07