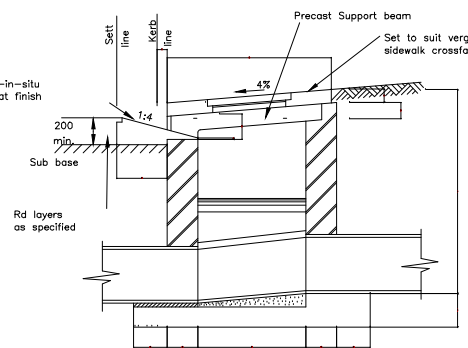


DETAIL OF CHANNEL SERRATIONS

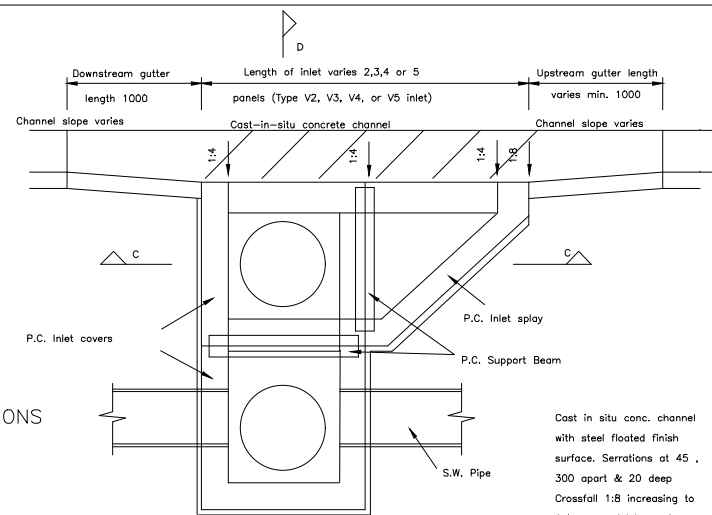


SECTION B-B

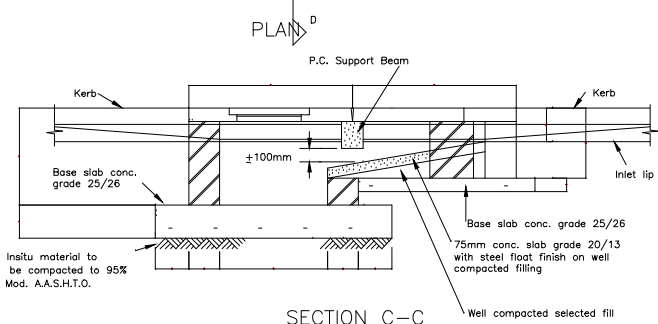
Note
This dimension varies between 420 to 640 depending on the number of bays

DETAIL OF SINGLE INLET TYPE " S "

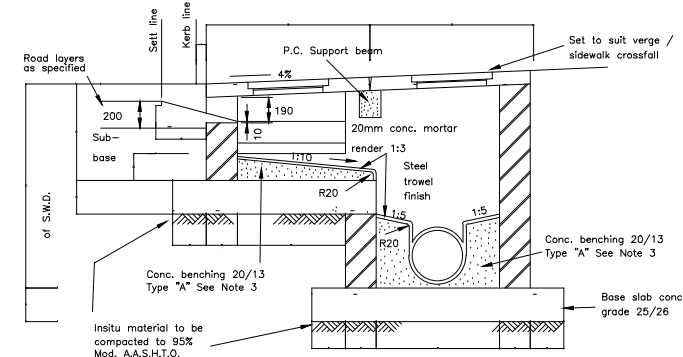
SCALE 1 : 25



Cast in situ conc. channel with steel floated finish surface. Serrations at 45° 300 apart & 20 deep
Crossfall 1:8 increasing to 1:4 across inlet opening



SECTION C-C



SECTION D-D

DETAILS OF INLETS TO SUIT S.W.D. IN VERGES TYPE " V "

SCALE 1 : 25

GENERAL NOTES :

- Catchpit face to be set back 75mm from kerb.
- 1.0m transition from kerb line to catchpit line.
- Type A benching to be used for S.W. inlets on continuous pipelines. For S.W. inlets located at the head of the pipeline, the benching need only be dished at a grade of 1:10 to the outlet.
- Max. depth of inlet after which a manhole type structure is to be detailed

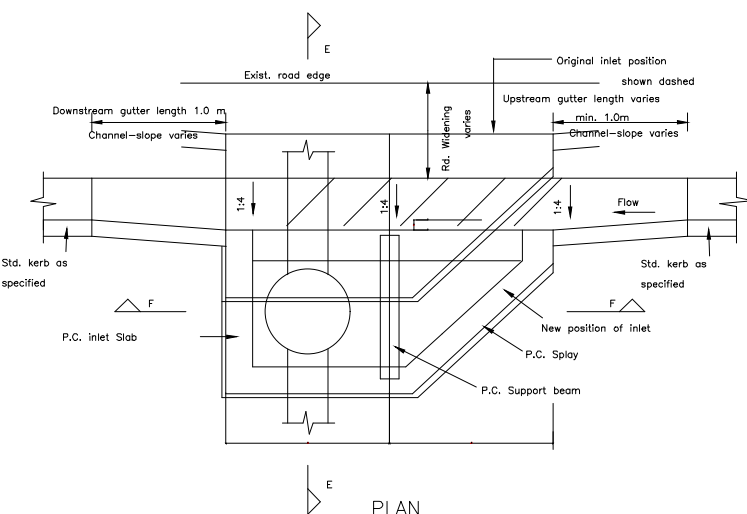
Inlet Type	Max. depth (FRL-Invert)
S	2.0
D	3.0

- The insitu ground must be compacted to 95% Mod. A.A.S.H.T.O. prior to the inlet base slab being cast. If this density cannot be obtained the insitu material must be removed to a depth of 300mm and replaced with a selected backfill.

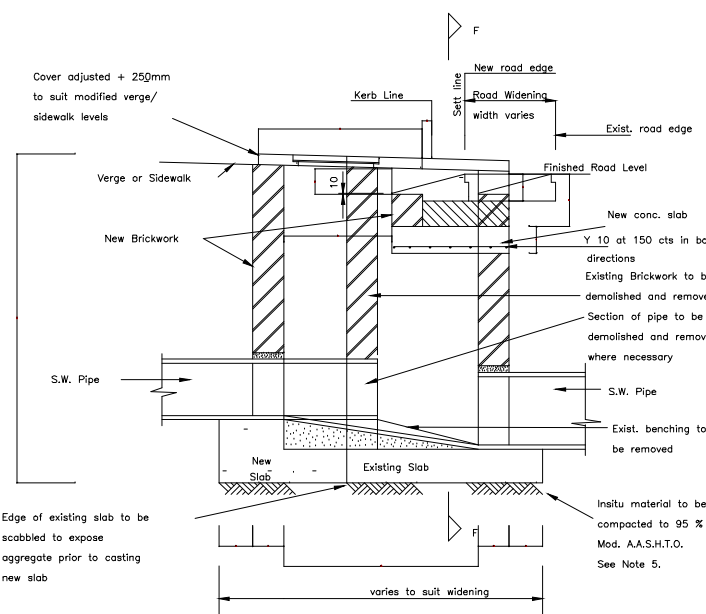
PRECAST CONC. UNIT	DWG. NO.
Inlet cover support beam	38854
Inlet slab	38854
Plain inlet slab	38854
Standard inlet splay	38854
Light duty M.H. cover	38853

- Gutter lengths:
In roads without full kerb and channel, minimum gutter lengths of 1.0m are to be provided on both upstream and downstream sides. Where additional upstream lengths are required this will be indicated on the road S.W. drawing.
Upstream gutter lengths shall not be less than the following:-

ROAD GRADE	UPSTREAM GUTTER LENGTH
0 - 2%	1m
2 - 4%	2m
4 - 6%	3m
6 - 8%	4m
> 8%	5m



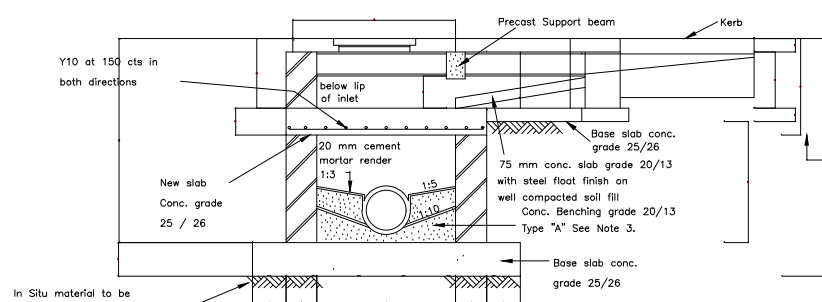
PLAN



SECTION E-E
DETAILS OF INLET / MANHOLE AFFECTED BY ROAD WIDENING


SCALE 1 : 25

Note :
Width of inlet as indicated on Section F-F will vary depending on type of inlet. The dimensions are to conform with the details shown on DWG. No. 38572 (N.B. TYPE S 2 shown)



SECTION F - F

GENERAL:

Revision	Date	Description
A	18.07.2022	ISSUED FOR APPROVAL
NOTE: No construction work to commence until land and servitude acquisitions have been completed		
Acquisitions completed		
Date	Engineer	
UNDERGROUND SERVICES CHECKED		
SERVICE	DATE	SIGNATURE
S.DRAWING		
SEWERS		
WATER MAINS		
G.P.A.CABLES		
ELECTRIC CABLES		
S.A.R. CABLES		
E.C. CABLES		
OR PIPE LINE		
NOTE: Only underground services affected by new construction work are shown. Care must be taken during construction for road foundations, benching etc., to avoid damage to underground services such as sewers, drains, cables, water mains and connections. Wherever possible these must be located before work proceeds.		
Contract No.	N/A	
 TRANSNET national ports authority		
STANDARD DRAWING		
STORMWATER INLET SPECIAL DETAILS		
DATE	2022-10-18	DR. DESIGN ENGINEER
SCALE	AS SHOWN	
DESIGNED BY	BY	DR. PORT ENGINEER
CHECKED BY	BY	
DRAWN BY	BY	DR. PLUM ENGINEER
CHECKED BY	BY	
PAPER SIZE	TRANSNET DRW. NO.	SHEET NO.
DH63T0302-002-00		
CONSULTANT / CONTRACTOR DRAW NO.		