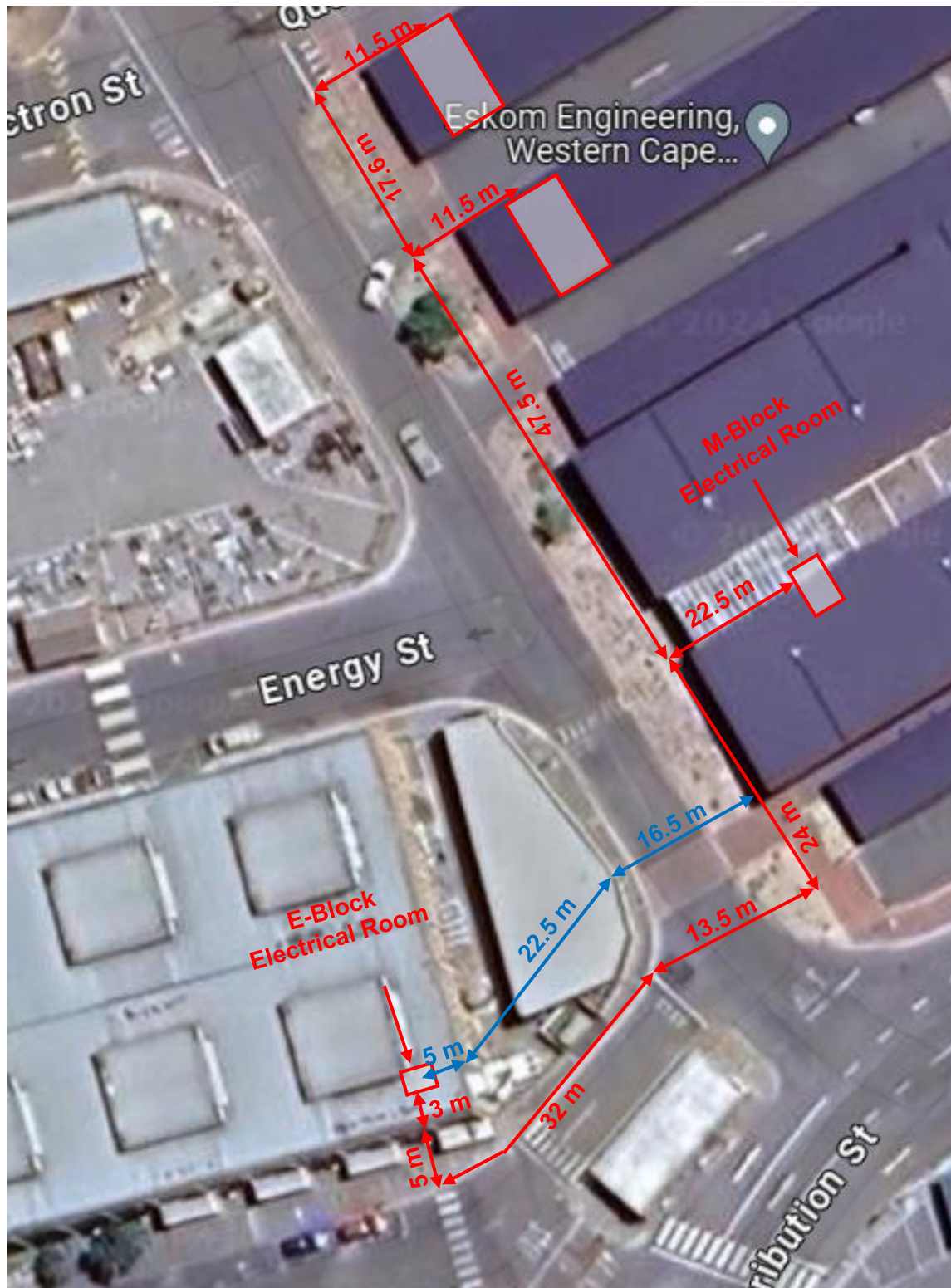


Cable lengths:



The Figure should be read together with Figure 4 in 34-127T: User Requirement Specification for a Microgrid at Eskom's Brackenfell Complex: M-Block Carports. It provides the approximate floor lengths from the proposed Inverter and Battery positions to the 2 building's Electrical Rooms. Tails and panel connections have not been added. The Blue is an alternative route to the E-block with paving that may make the trenching simpler.