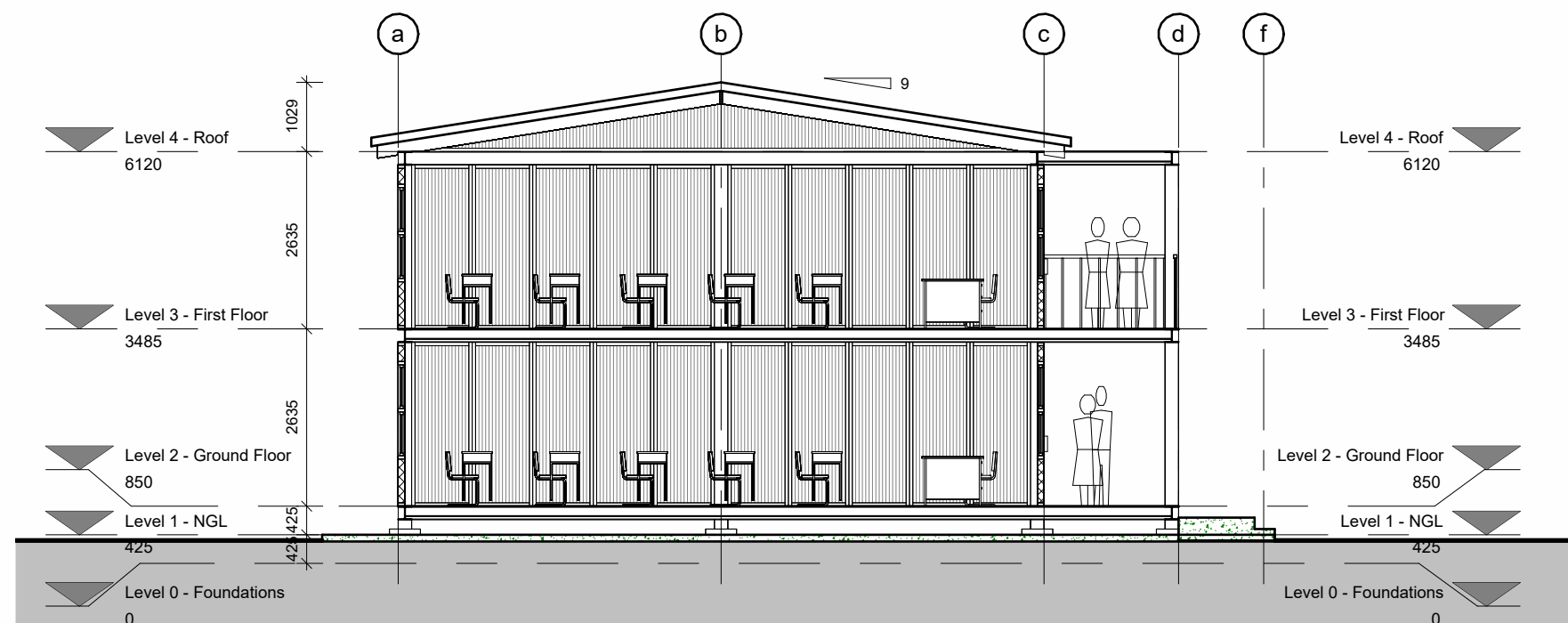
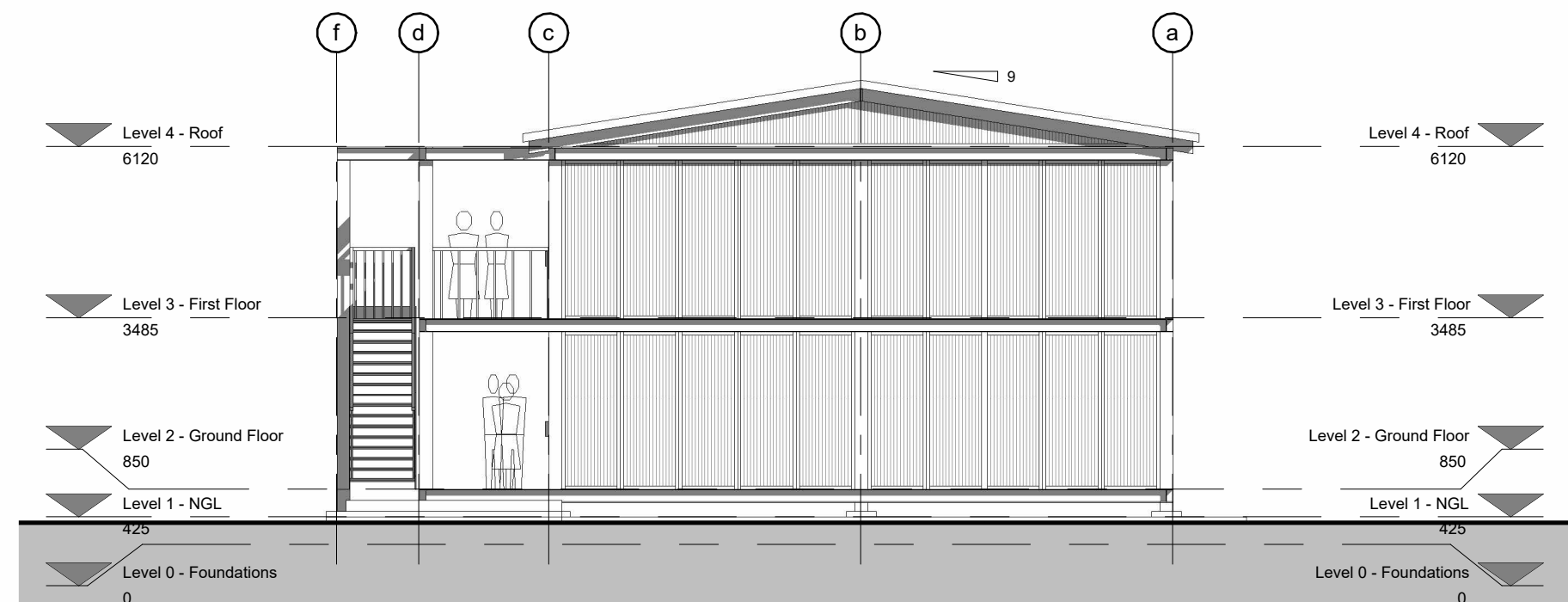


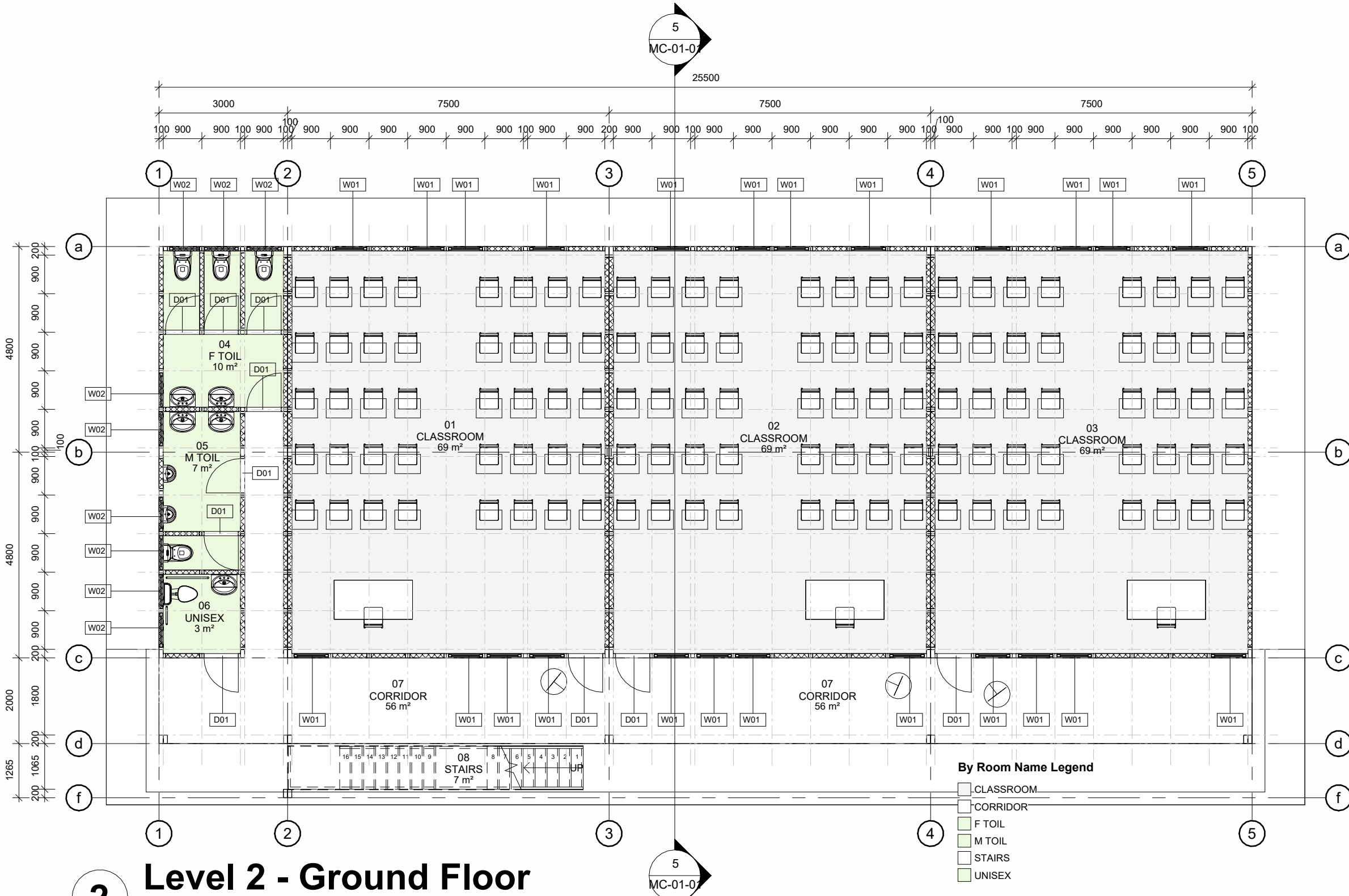
9 West
1 : 100



5 Section 1
1 : 100



8 East
1 : 100



2 Level 2 - Ground Floor
1 : 100



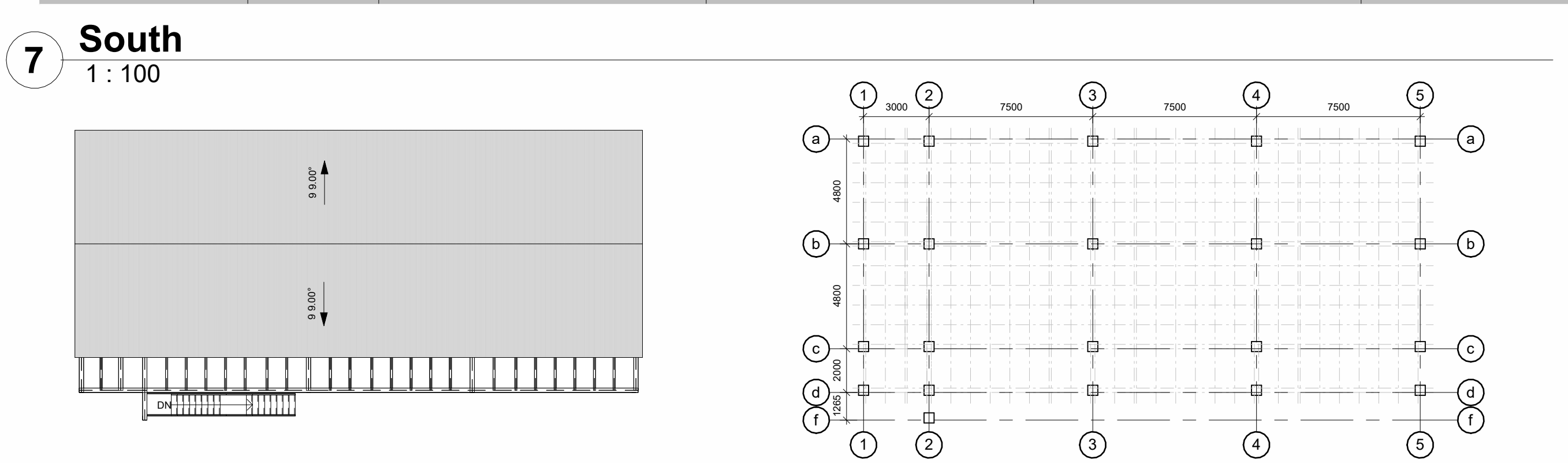
3 Level 3 - First Floor
1 : 100

- NOTES**
- MINIMUM SIZE OF EACH CLASSROOM NOT TO BE LESS THAN 7 METERS IN WIDTH AND 9 METERS IN LENGTH.
 - BIDDING ENTRY: OR JV PARTNER TO BE ACTIVELY REGISTERED WITH AGREEMENT SOUTH AFRICA.
 - A MEMBER OR DIRECTOR OF BIDDING COMPANY TO BE CURRENT AND ACTIVELY REGISTERED WITH ECSA AS A STRUCTURAL ENGINEER.
 - IT IS COMPULSORY FOR BIDDERS TO ATTACH TYPICAL AND RELEVANT TECHNICAL SPECIFICATIONS (I.E., FOUNDATIONS, FLOORS, WALLS, WINDOWS, CEILING, ROOFS, ETC.) AS PART OF THE BIDDING.
 - DOCUMENTATION FOR TECHNICAL EVALUATION.
 - TECHNICAL SPECIFICATIONS ON THE ROOF, WALLS, FLOOR AND FOUNDATION STRUCTURES TO BE AS PER THE SUPPLIERS' SPECIFICATIONS AND SUBJECT TO APPROVAL BY THE PRINCIPAL AGENT.
 - SHOP DRAWINGS FOR ALL SPECIALISTS WORKS TO BE APPROVED BY PRINCIPAL AGENT PRIOR TO INSTALLATION.
 - MANUFACTURE, SUPPLY AND INSTALL OF MOBILE CLASSROOM AND STEEL STRUCTURE AS PER PRINCIPAL AGENTS DRAWINGS BY SPECIALIST.
 - SUPPLIER TO PROVIDE ALL RELEVANT CERTIFICATIONS OF COMPLETION AND COMPLIANCE.
 - ALL UNISEX TOILETS TO COMPLY WITH SANS 10400 PART S. FACILITIES FOR PERSONS WITH DISABILITIES.
 - ALL TRADES AND TRADE NAMES MAY BE SUPPLIED AS PER THE ORIGINAL SPECIFICATIONS OR SIMILAR APPROVED BY THE PRINCIPAL AGENT.
 - SITE LAYOUT AS PER THE COLLEGE DIRECTIONS.
 - FIRE RATING AND INSULATION TO WALLS, FLOORS, ROOF, AND CEILINGS TO COMPLY WITH AGREEMENT SOUTH AFRICA AND SANS 10400 STANDARDS.
 - SOUND INSULATION ON WALLS AND FLOORS TO MEET CLASSROOM REQUIREMENTS AND APPROVED BY THE PRINCIPAL AGENT.
- ITEMS**
- Insulation on Walls, Floors and Roofs to comply with SANS 10400 and as approved by the Principal Agent.
 - 100mm x 100mm 16 A Combo Socket with 1 SA and Twin EURO Sockets COLOUR White (4 PER CLASSROOM).
 - Switch: 1 Lever, 1 Way 10 A 250 V COLOUR White (1 PER CLASSROOM).
 - PRILL LIGHT FITTINGS Open Channel wired for 2 x 24W T8 LED OR SIMILAR APPROVED (4 PER CLASSROOM).
 - Populated DB Surface by Specialist (1 PER CLASSROOM).
 - Doors to Match Exterior Panels of the Classrooms, COLOUR, White.
 - Manually operated 50mm standard light reduction, privacy and light control aluminium Venetian Blind with Classic string tape, size 900 x 1500mm, face fixed to walls controlled with hand operated lift and tilt cords. (8 PER CLASSROOM)
 - ASSA ABLOY Euro Profile narrow stile cylinder hook bolt lock case (Code: 424125NM) with Nickel Machined forend (1 PER CLASSROOM AND TOILET).
 - ASSA ABLOY PowerGrip swing door system installed in accordance with manufacturer's recommendations (1 PER CLASSROOM AND TOILET).
 - 1350 (H) x 900mm (W) TOP-HUNG ALUMINIUM WINDOW (Finish: Natural / Glass: Clear) by specialist (AS PER THE WINDOW SCHEDULE - IN CLASSROOMS).
 - 700 (H) x 900mm (W) TOP-HUNG ALUMINIUM WINDOW (Finish: Natural / Glass: Obscured) by specialist (AS PER THE WINDOW SCHEDULE - IN TOILETS).
 - POLYFLO 2mm thick CLASSIC MYSTIQUE PUR LIFELONG POLISH FREE HOMOGENEOUS VINYL FLOOR SHEETING Colour Quartz (Colour code: 1400), laid in neoprene contact adhesive spread with a roller on suitably prepared non-porous floor surfaces and rolled with 50kg articulated floor roller, all in accordance with manufacturer's recommendations (ALL AREAS).
 - Wall-Mount Window Vial 18000 BTU AIRCONDITIONING SYSTEM by Specialist (1 PER CLASSROOM).
 - FRANKE 1.2mm Grade 304 1810 STAINLESS STEEL HCL PEDESTAL WC pan (Code: 2540154), size 500 x 360 x 428mm high, exposed back entry flush valve (elsewhere specified) and 60mm flush pipe, bolted to floor with 6mm anchor bolts, compliant with SABS 1733:2002.
 - FRANKE 0.9mm Grade 304 1810 STAINLESS STEEL TU102 THROUGH URINAL (Code: 2540070), size 1830 x 320 x 800mm high, automatic flushing with built-in tipping tank and one 12mm adjustable drip cock, 40mm right hand waste outlet, bolted to wall with anchor bolts.
 - FRANKE CNTXPAR satin finished stainless steel parapet grab rail (Code: 2510012), size 300 x 96 x 300mm with Franke Fine Grip surface, plugged and screwed to the wall with stainless steel screws.
 - FRANKE CNTX708 satin finished stainless steel parapet grab rail (Code: 2510001), size 850 x 100 x 245mm with Franke Fine Grip surface, plugged and screwed to the wall with stainless steel screws.
 - FRANKE HF2400ND 1.2/1.5mm thick satin finished stainless steel automatic hands-free hand dryer (Code: 2500001), size 280 x 207 x 245mm high with 2 vandal proof lock screws and key wrench, plugged and screwed to the wall with stainless steel screws, 200 W motor connected to 230/240 volt power supply. With 5-year warranty.
 - FRANKE STRATOS STRX872 1.2/1.5mm thick satin finished stainless steel double toilet roll dispenser (Code: 2120044), size 156 x 141 x 303mm high for 2 rolls maximum 106mm diameter with spindle system and cylinder lock with standard Franke key, plugged and screwed to the wall with stainless steel screws.
 - FRANKE M600HDBmm MIRRORS (Code: 2120080), size 600 x 500mm high, concealed thief resistant fixings, plugged and screwed to the wall with stainless steel screws (1 PER TOILET).
 - FRANKE Chrome S200 soap dispenser (Code: 2120059), size 44mm diameter x 144 x 85mm high with a replaceable 1 litre polyethylene container (1 PER TOILET).
 - FRANKE 0.9mm Grade 304 1810 STAINLESS STEEL LULUX (Code: 2560001), size 600 x 500 x 257mm deep with pressed bowl size 525 x 425 x 207mm deep and 40mm waste outlet, Falcon galvanised mild steel bracket with 25mm square mild steel front leg (Code: 2120007) (Code: 2120003) bolted to wall with 6mm anchor bolts.
 - COBRA DEMAND PUSH BUTTON PILLAR TAP M42-102 CP (1 PER WASH-HAND BASIN).
 - PLUMLINE CLINIX PILLAR TAP CP COLD 15mm (1 PER UNISEX TOILET).
 - Carpet Pin Board (1200mm x 2400mm) (2 PER CLASSROOM).
 - Magnetic Pin Board (1200mm x 2400mm) (2 PER CLASSROOM).

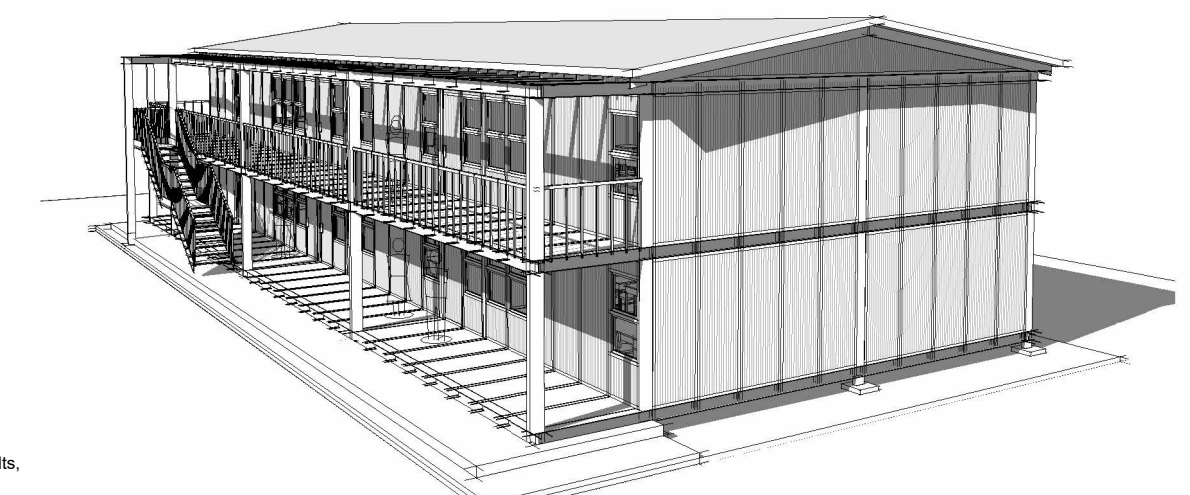
6 North
1 : 100



7 South
1 : 100



1 Level 0 - Foundations
1 : 200



12 3D View 1

ALL RIGHTS RESERVED. NO PART OF THIS DOCUMENT MAY BE REPRODUCED OR TRANSMITTED IN ANY FORM OR BY ANY MEANS, ELECTRONIC OR MECHANICAL, INCLUDING PHOTOCOPYING, RECORDING, OR BY ANY INFORMATION STORAGE AND RETRIEVAL SYSTEM.

Area Schedule (Gross Building)

Name	Area
GROUND FLOOR AREA	301 m ²
FIRST FLOOR AREA	301 m ²
Grand Total	603 m ²

Room Schedule

Number	Name	Area
01	CLASSROOM	69 m ²
02	CLASSROOM	69 m ²
03	CLASSROOM	69 m ²
04	F TOIL	10 m ²
05	M TOIL	7 m ²
06	UNISEX	3 m ²
07	CORRIDOR	56 m ²
08	STAIRS	7 m ²
11	CLASSROOM	69 m ²
12	CLASSROOM	69 m ²
13	CLASSROOM	69 m ²
14	F TOIL	7 m ²
15	M TOIL	7 m ²
16	UNISEX	3 m ²
17	CORRIDOR	56 m ²
18	STAIRS	7 m ²
Grand Rentable Total	18	576 m ²

ORBIT TVET COLLEGE

SUPPLY AND INSTALLATION OF SIX MOBILE CLASSROOMS AT ORBIT COLLEGE RUSTENBURG CAMPUS

ORBIT TVET CAMPUS RUSTENBURG

ARCHITECTURE

HPS

GPS ARCHITECTS

Reg. No. 2005/03208/23
gft@hpsarchitects.co.za
admin@hpsarchitects.co.za
GIFT PHALATSE SETSHEDI-Pr Arch 21208
072 720 4477

TENDER

SIX MOBILE CLASSROOMS

Project No: GPS-PRIO-2202 ORBIT RUSTENBURG MC
Scale: As indicated Sheet Size: A1
Date of Issue: 2022/09/11 10:22:51
Drawn By: GPS / BM / TM Checked By: GPS
MC-01-01