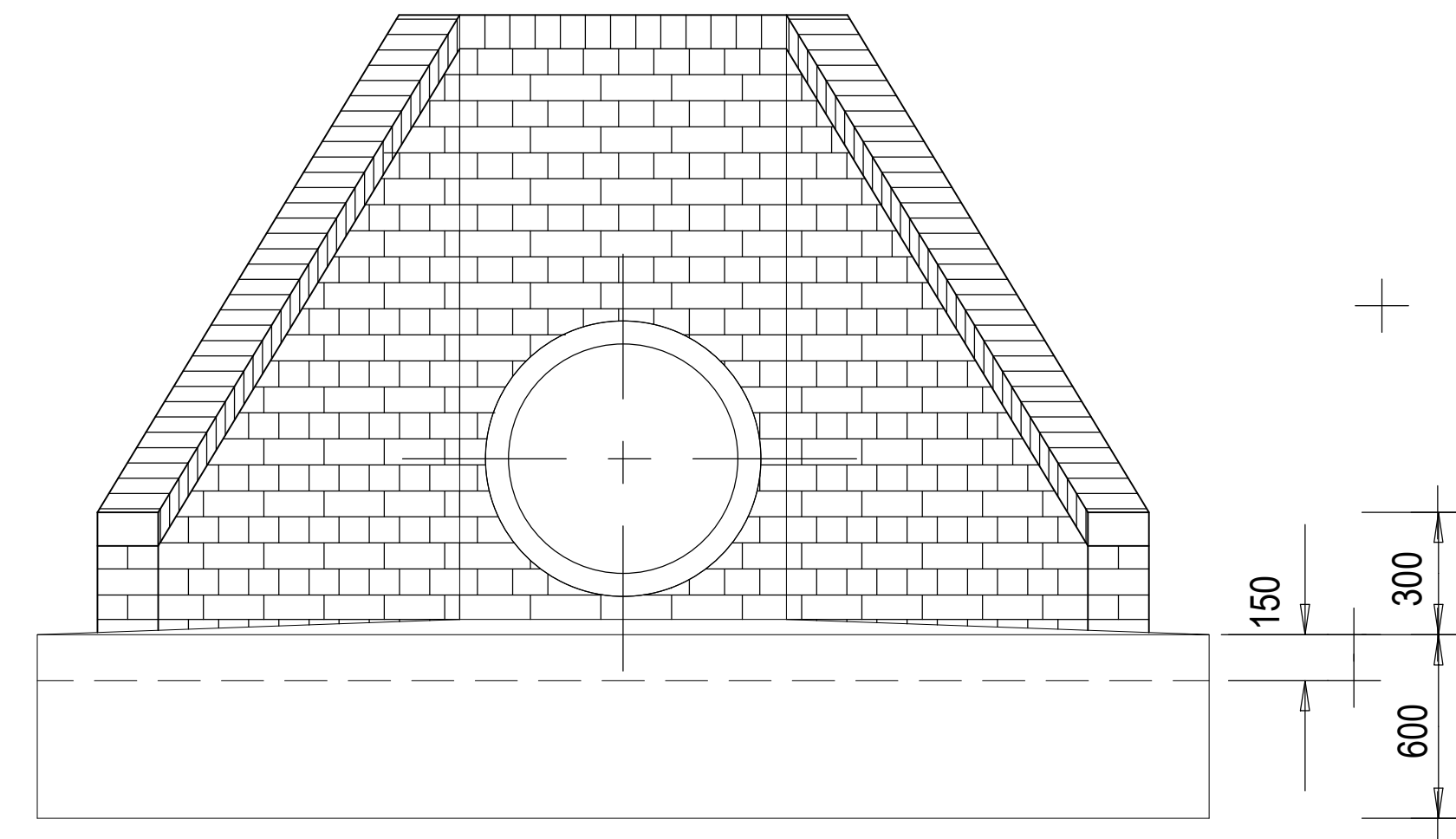


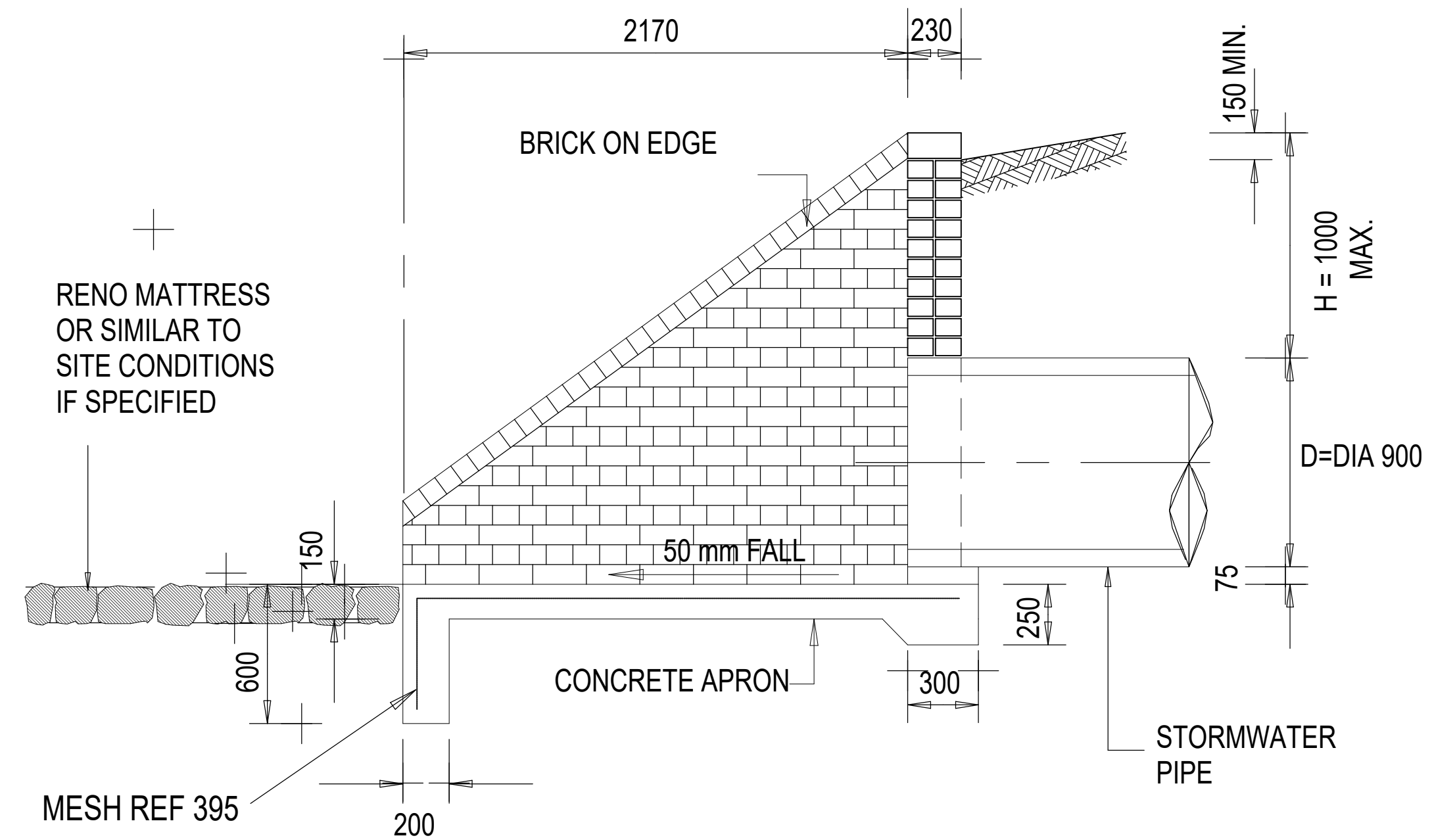
PLAN

NOTES

1. THE MATERIAL FOR A DEPTH OF 150mm UNDER THE APRON SLAB MUST BE COMPACTED TO A MINIMUM DENSITY OF 90 % OF THE MOD. AASHTO DENSITY.
2. ALL CONCRETE TO BE CLASS 25/19.
3. ENERGY BREAKERS MUST BE PROVIDED ACCORDING TO DRG KB019/JRA/GAU-RS/SD-S018 WHEN REQUIRED BY THE ENGINEER
4. ALL BRICKS TO BE OF QUALITY FBSE30 TO SABS 227-1986 WITH WATER ABSORTION <14% AND EFFLORESCENCE <10.
5. ALL BRICKWORK TO BE IN ENGLISH BOND.
6. NO PLASTERING OF BRICKWORK WILL BE ALLOWED.



FRONT ELEVATION



SECTION A-A

[illegible]