

Platform handrails

The ACC Fans walkway platform

ACC Fans blades

The ERI maintenance team works underneath the ACC fans walkway platform when performing the blade torque PM on the ACC fan blades.

The ERI team is currently using the anchor point for the walkway platform handrails as an anchor point for the lifeline that is used in conjunction with a safety harness as a fall arrest system.



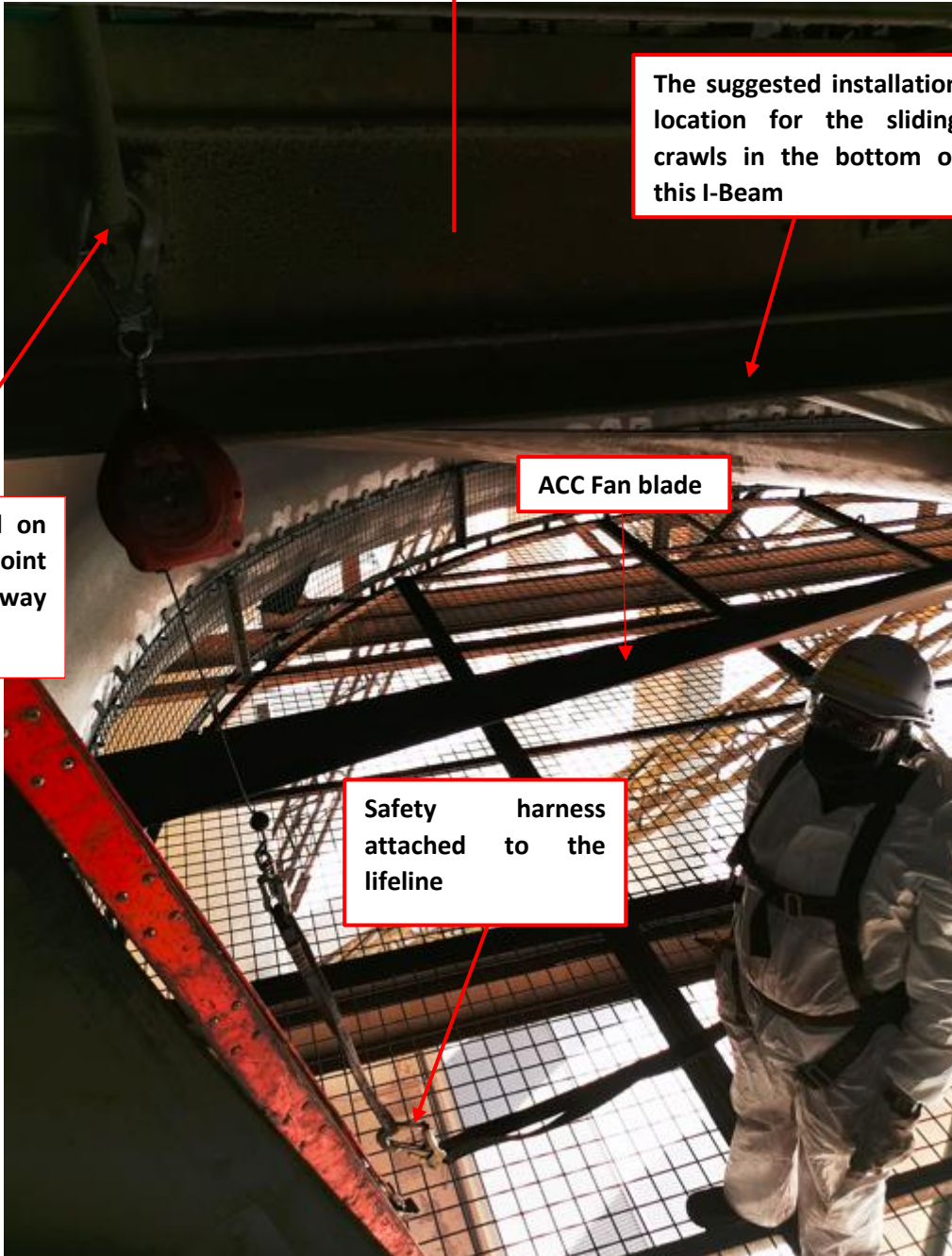
The ACC Fans walkway platform is above this I-beam

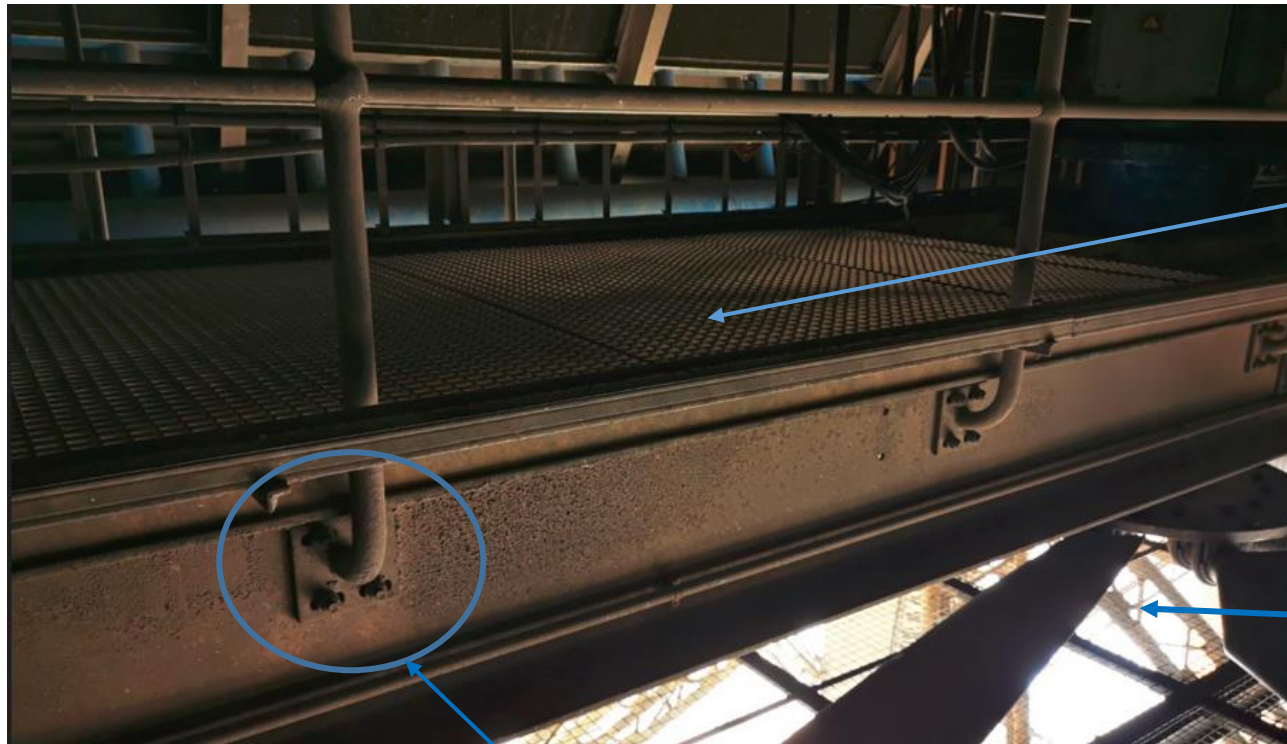
The suggested installation location for the sliding crawls in the bottom of this I-Beam

Lifeline anchored on the anchoring point for the ACC walkway platform.

ACC Fan blade

Safety harness attached to the lifeline





The ACC fans walkway

The work area

The current anchor point