

THIS DRAWING AND DESIGN ARE CONFIDENTIAL AND THE PROPERTY OF KANTEY & TEMPLER AND MAY NOT BE REPRODUCED OR PARTIALLY COPIED/REPRODUCED IN WHOLE OR IN PART WITHOUT THE WRITTEN PERMISSION OF KANTEY & TEMPLER.

GENERAL NOTES

- All materials and construction methods must comply with the National Building Regulations (act no.103 of 1977) including all amendments, as well as to all local Authority regulations that be finished and fixed strictly in accordance with the relevant manufacturer's specifications, unless explicitly specified differently.
- All dimensions must be verified on site. be pointed out to the engineer for correction or explanation prior to commencement of construction.
- Never scale from this or any other drawing.

CONTROL SCHEDULE			
ADMIN / APPARATUS BAY			
Ground Floor Area	511.18m²		
First Floor Area	233.38m²		
Total floor area	744.56m²		
GROUND CREW BUILDING			
Ground Floor Area	131.04m²		
WASH BAY			
Ground Floor Area	57.00m²		
TOTAL GROUND FLOOR AREA	892.20m²		
SITE AREA			
	8975.19m²		
SITE COVERAGE			
	11.90%		

No	DESCRIPTION	DRAWN	DATE	APP	
A	ISSUE FOR TENDER	TH	30-03-22	NA	
DESIGNED	T.H		30-Mar-22		
DRAWN	T.H		30-Mar-22		
PROJECT ENG.	C.G.A		30-Mar-22		
APPROVED	C.G.A		30-Mar-22		



KANTEY & TEMPLER

CONSULTING ENGINEERS

Engineering African Development

P O BOX 458 GEORGE SOUTH AFRICA 6530 TEL: +27 44 874 2177

CLIENT



PROJECT
NEW FIRE STATION FOR
GARDENROUTE DISTRICT
MUNICIPALITY
ERF 22494/22495
GEORGE

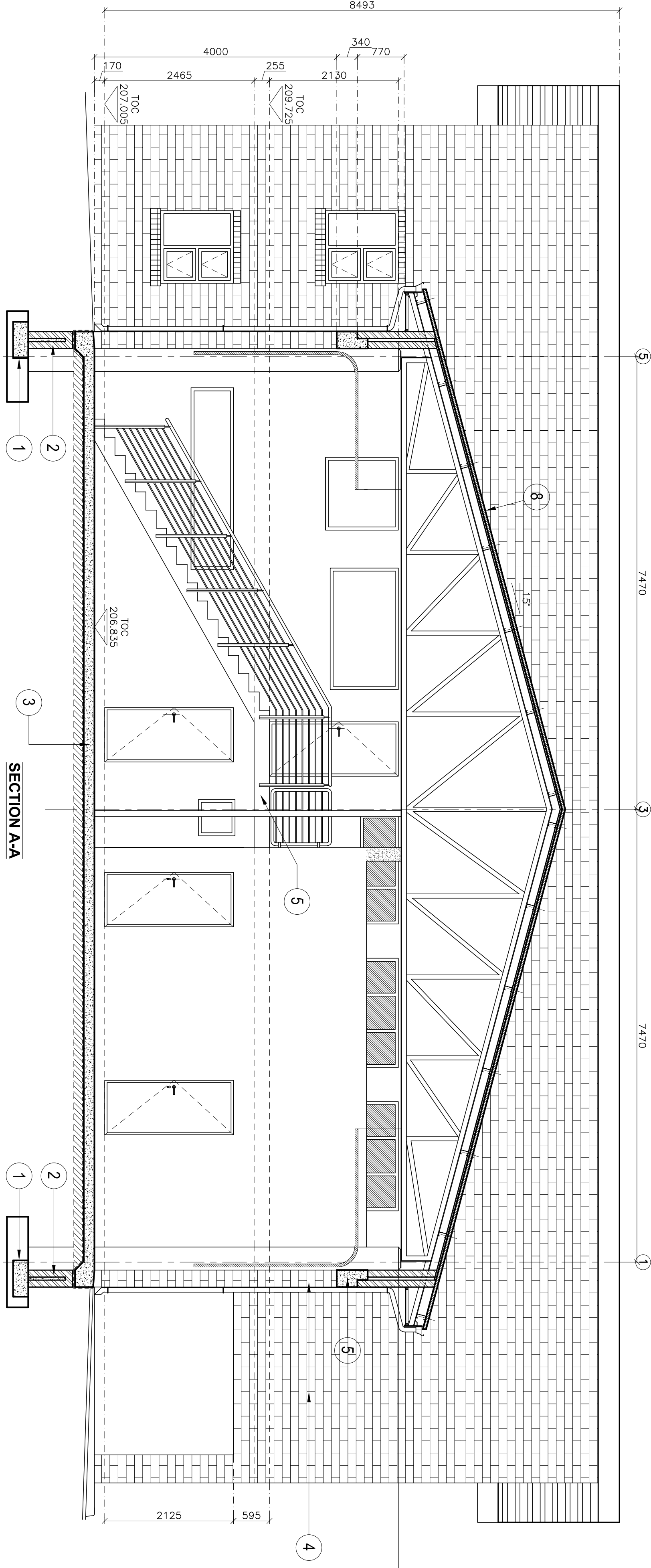
BUILDING SECTIONS

DRAW No: G5211BA-ARC-002

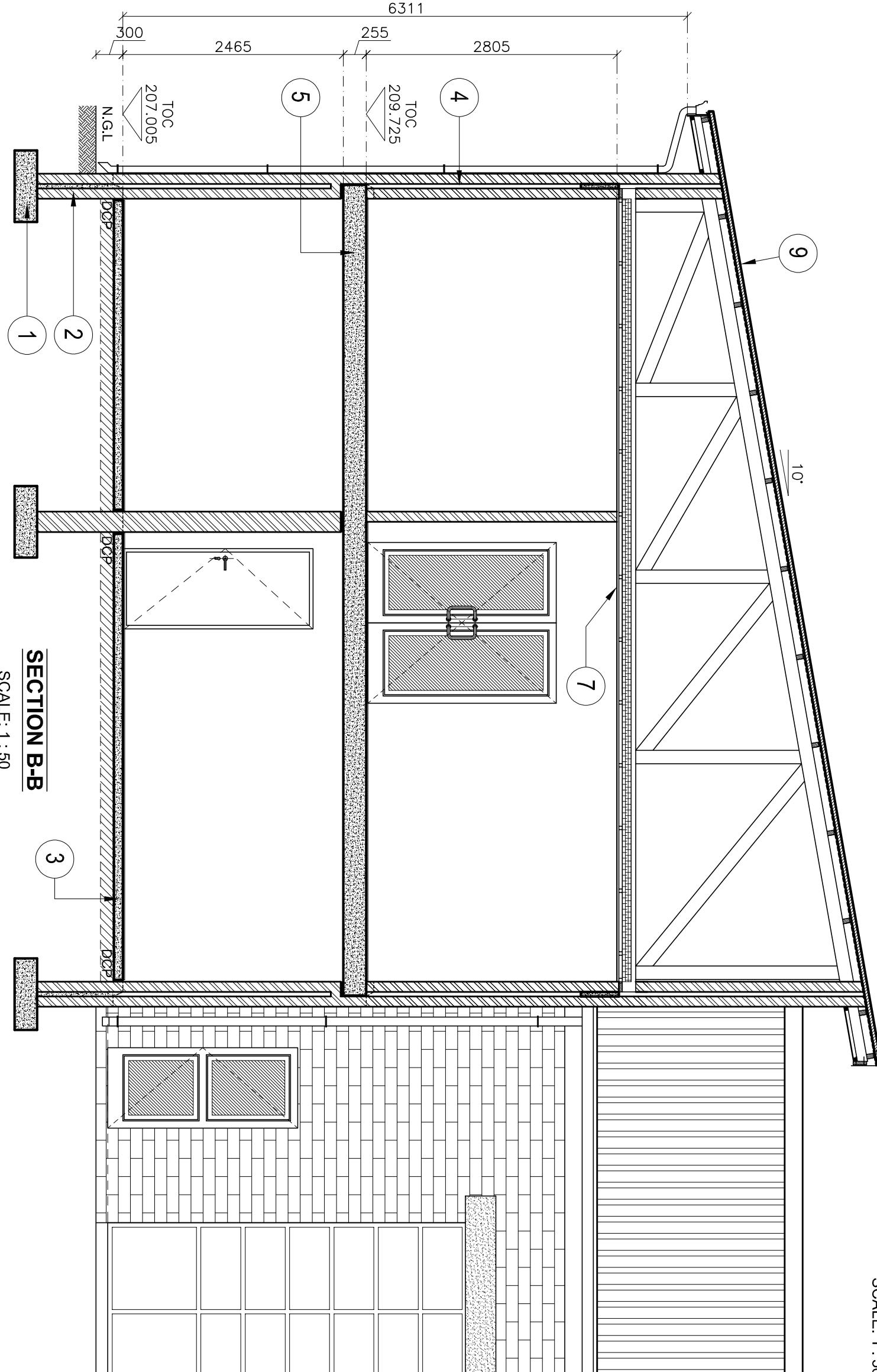
REV No A

SPECIFICATIONS

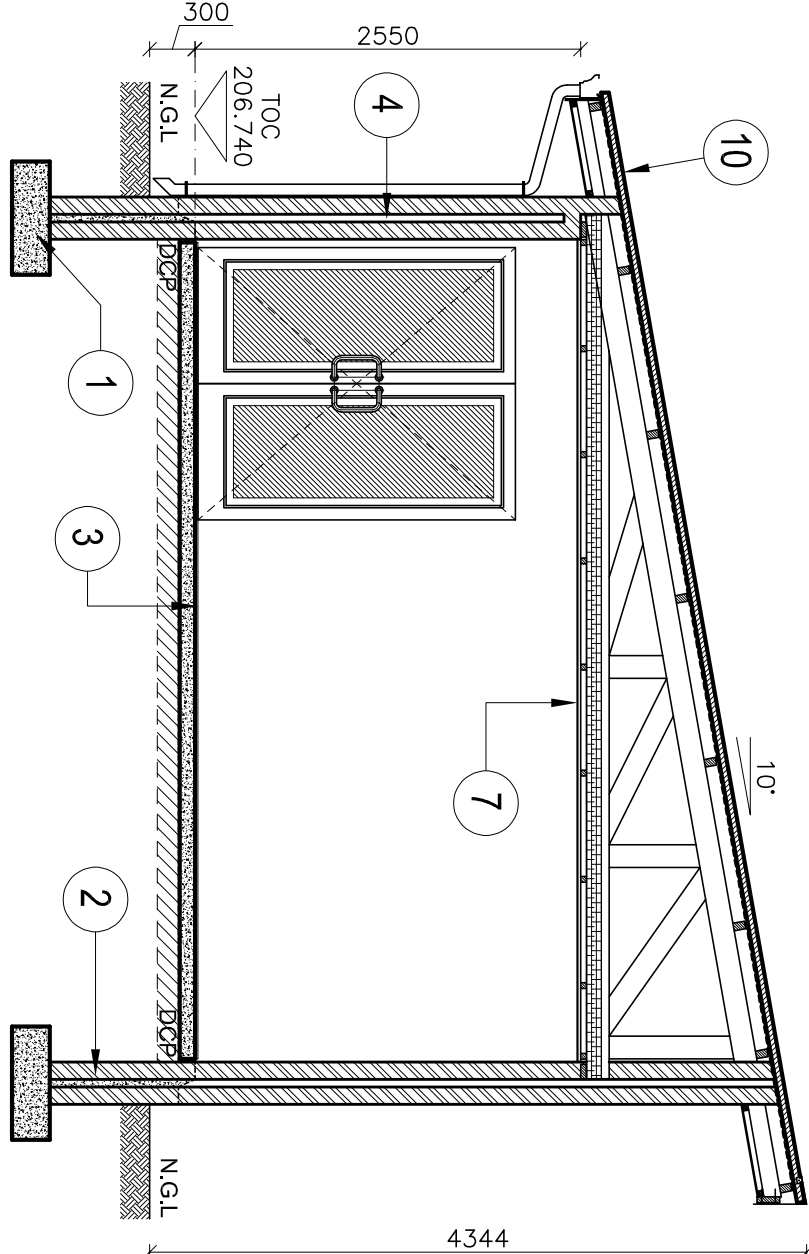
- FOUNDATIONS**
Reinforced concrete foundations as per engineer's specifications.
- FOUNDATION WALLS**
 - 280mm cavity wall with butterfly wall ties at a rate of 2.5m² and brickforce every coarse to surface bed level. External skin above natural ground level to be facebrick. Internal skin to be 21 MPa solid clay bricks and cavity filled with 20MPa concrete.
 - 220/110mm internal wall to be 14 MPa solid clay bricks with brickforce every coarse.
- SURFACE BEES**
Reinforced concrete surface beds placed on approved filling as per engineer's specifications. Finish to be laid on 35mm cement screed laid on surface beds. Finishes as per layout plans.
- WALLS**
 - 220mm cavity wall with butterfly wall ties at a rate of 2.5m² and brickforce every 4th coarse to lintle height after that every second coarse. Weepholes to be uniform and at 650mm centres. External skin to be facebrick. Internal skin to be 21 MPa solid clay bricks smooth plastered & painted.
 - 220/110mm internal wall to be 14 MPa solid clay bricks smooth plastered & painted.
- FIRST & SECOND FLOOR SLABS**
Reinforced concrete slabs and beams as per engineer's specifications. Finish to be laid on 35mm cement screed laid on reinforced concrete slabs. Finishes as per layout plans.
- STEEL COLUMNS**
Structural steel columns as per engineer's specifications.
- CEILINGS**
Flat 6.4 mm trihoboard skinned joints ceiling fixed to 38 x 38 mm branding at max. 400mm c/c fixed to underside of suspended tie beam hung from truss fixed with rinto cornice. 100mm Thick 'Isoborn' mineral wool insulation laid onto ceilings between trusses as per manufacturer's specs.
- APPARATUS BAY ROOF**
0.53mm AZ150 G550 'Klip-Lok 410' Zincalume ribbed steel sheets with a clean Coloprus® finish in approved standard colour to suit on one side and a standard backing coat to reverse side, fixed to timber purlins as per manufacturer's specifications. (Colour: Charcoal). Sisalation FR430 grade aluminium foil insulation sheeting fixed onto timber purlins with 150mm stapled laps and double-sided tape at edges where required as per manufacturer's specifications. Roof sheeting laid onto sisalation and fixed to 76 x 50mm grade 5 S.A. Pine timber purlins @ 1000mm centres max fixed to prefabricated roof trusses @ 1000mm max. Roof trusses to be fixed to brick wall with 38 x 1.2mm galv steel roof anchors built into brickwork six coarses down. Prefabricated trusses manufactured by specialist in accordance with SABS. 0162 0163.
- ADMIN ROOF**
0.53mm AZ150 G550 'Klip-Lok 410' Zincalume ribbed steel sheets with a clean Coloprus® finish in approved standard colour to suit on one side and a standard backing coat to reverse side, fixed to timber purlins as per manufacturer's specifications. (Colour: Charcoal). Sisalation FR430 grade aluminium foil insulation sheeting fixed onto timber purlins with 150mm stapled laps and double-sided tape at edges where required as per manufacturer's specifications. Roof sheeting laid onto sisalation and fixed to 76 x 50mm grade 5 S.A. Pine timber purlins @ 1000mm centres max fixed to prefabricated roof trusses @ 1000mm max. Roof trusses to be fixed to brick wall with 38 x 1.2mm galv steel roof anchors built into brickwork six coarses down. Prefabricated trusses manufactured by specialist in accordance with SABS. 0162 0163.
- GROUND CREW ROOF**
0.53mm AZ150 G550 'Klip-Lok 410' Zincalume ribbed steel sheets with a clean Coloprus® finish in approved standard colour to suit on one side and a standard backing coat to reverse side, fixed to timber purlins as per manufacturer's specifications. (Colour: Charcoal). Sisalation FR430 grade aluminium foil insulation sheeting fixed onto timber purlins with 150mm stapled laps and double-sided tape at edges where required as per manufacturer's specifications. Roof sheeting laid onto sisalation and fixed to 76 x 50mm grade 5 S.A. Pine timber purlins @ 1000mm centres max fixed to prefabricated roof trusses @ 1000mm max. Roof trusses to be fixed to brick wall with 38 x 1.2mm galv steel roof anchors built into brickwork six coarses down. Prefabricated trusses manufactured by specialist in accordance with SABS. 0162 0163.
- WASH BAY ROOF**
0.53mm AZ150 G550 'Klip-Lok 410' Zincalume ribbed steel sheets with a clean Coloprus® finish in approved standard colour to suit on one side and a standard backing coat to reverse side, fixed to new purlins as per manufacturer's specifications. (Colour: Charcoal). New steel purlins and rafters as per engineer's specifications.
- WINDOWS**
Standard anodised aluminium window frames as per WISPECO clip 44 or equal approved. Colour: Charcoal. Glass to be 1500 pascal win leading as per AAAMSA standards.
- CILLS**
Flush plaster and painted window cills internally. Face brick on edge externally.
- SEWERS**
Width of trench to be wide enough for workmen to work in comfortably. Continuous bedding to be selected granular, non cohesive material and compacted to a depth of min 100mm. The pipe must be back filled immediately after laying, leaving joints exposed for testing. UPVC pipes and fittings are manufactured to SABS No. 791-1986. UPVC pipes are designed for normal and heavy duty and jointing can be either solvent weld or rubber joint O-rings. All sewer pipes exiting building to be concealed in cavity walls an closed up. External sewer as per engineer's specifications.
- Electrical**
All electrical work as per Electrical Engineer's specifications.
- Mechanical / Fire**
All mechanical and fire work as per Mechanical Engineer's specifications.



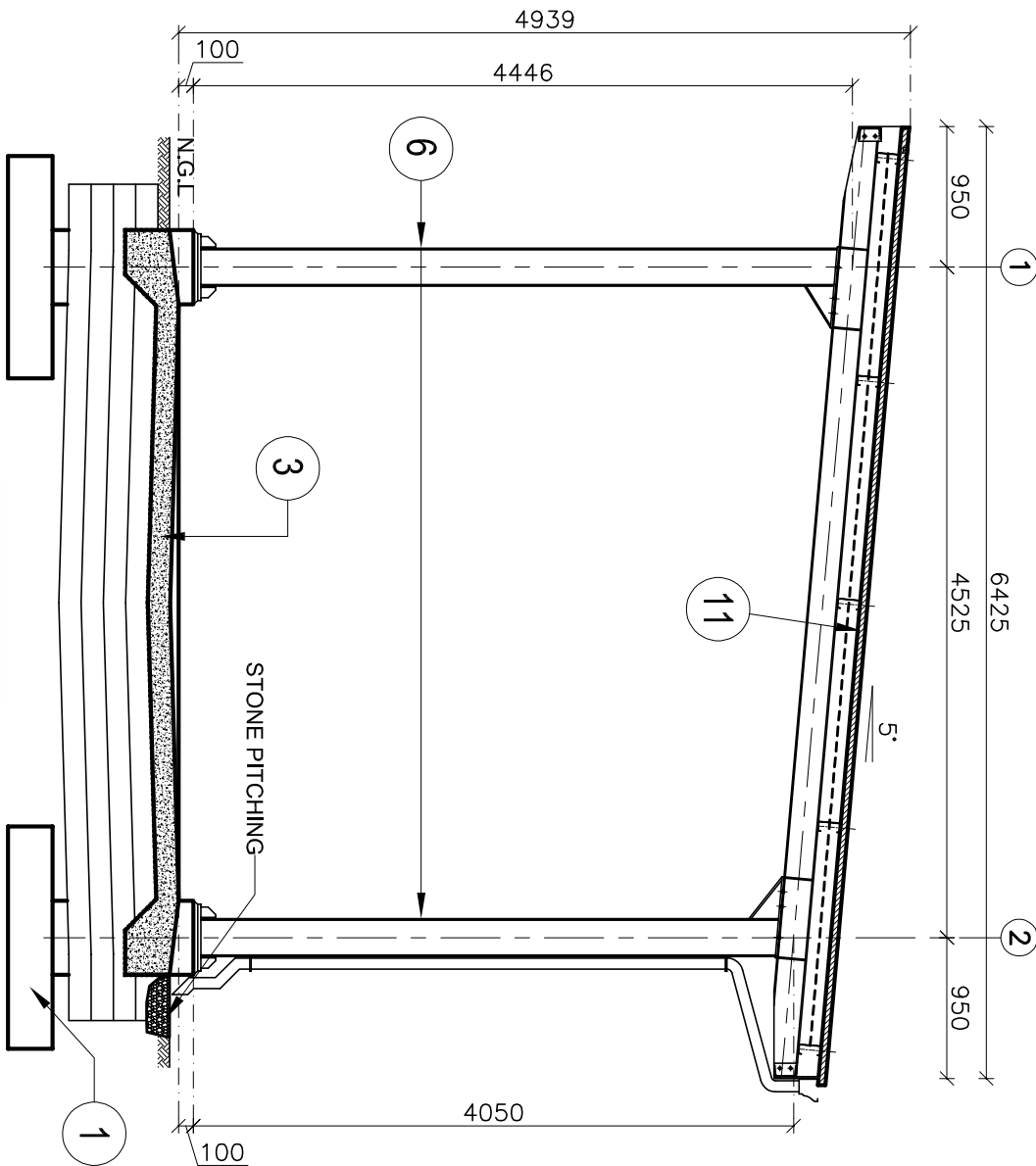
SECTION A-A
SCALE: 1 : 50



SECTION B-B
SCALE: 1 : 50



SECTION D-D
SCALE: 1 : 50



SECTION E-E
SCALE: 1 : 50