

eThekweni Municipality
CLEANSING & SOLID WASTE

DSW

REDUCED PLAN USE SCALE BELOW
0 10 20 30 40 50 60 70
70mm ON ORIGINAL PLAN

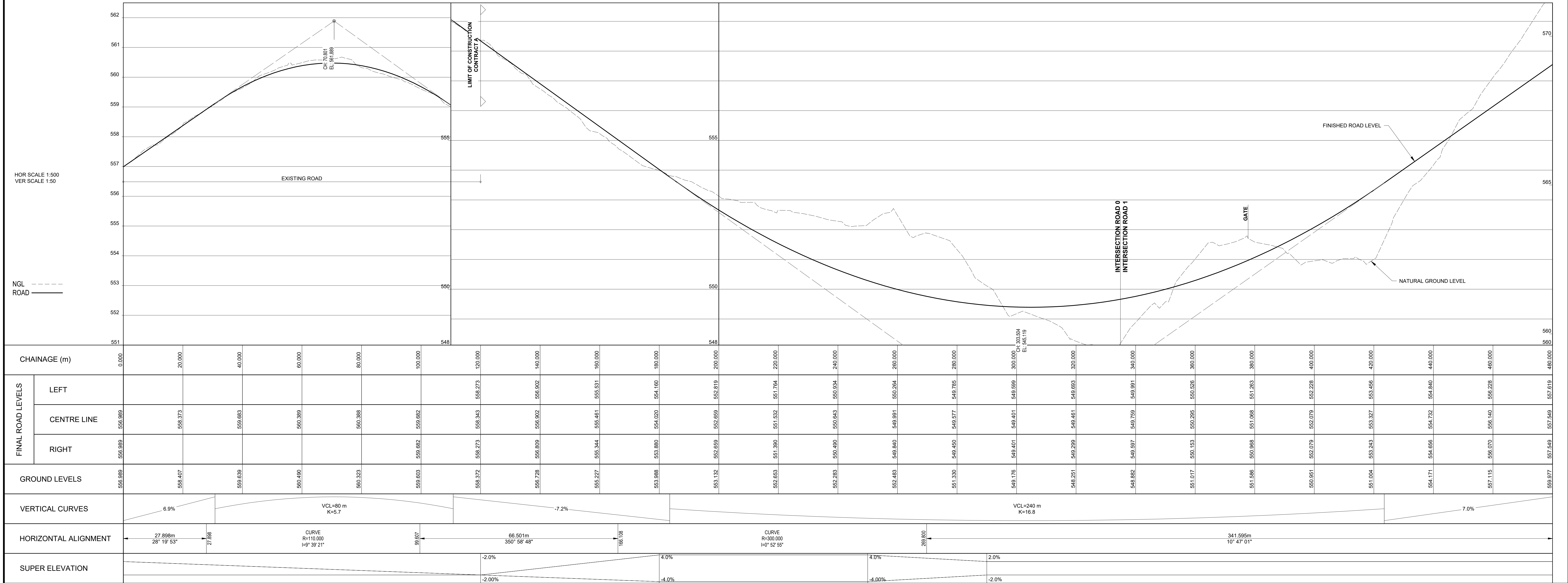
LEGEND
STORMWATER
CONTAMINATED STORMWATER
SEWER
DOMESTIC WATER
FIRE WATER
ELECTRICAL
TO BE CONSTRUCTED TO EARTHWORKS FORMATION LEVEL PLUS GRAVEL SURFACING WHERE INSTRUCTED BY ENGINEER
NOT TO BE CONSTRUCTED IN THIS CONTRACT
GRASSLANDS TO BE PRESERVED INTACT NOT TO BE ENCROACHED ON IN ANY WAY

NOTE:
AREAS NOT HATCHED TO BE CONSTRUCTED TO FINAL SURFACE AND FINISHES

Design Consultants
ix / Wilson & Pass Inc JV
ixengineers, Eastern Office Park 1, Protea House
270 Lynnwood Service Road | Lynnwood Ridge
Pretoria | 0081 | Tel: +27 12 765 2000
Local Manager Tel: +27 31 254 5700
www.ixengineers.co.za

ixengineers
Infrastructure Excellence
CK No. 2016/27514301
MULTIDISCIPLINARY CONSULTING ENGINEERS
Western Office Park | 21 The Boulevard | Westville | Durban | 3630
Tel: +27 31 254 5700 | Fax: 086 537 7553
www.ixengineers.co.za

Wilson & Pass Inc
P.O. Box 641 | Westville | 3630 | SA
enr@wp.co.za | www.wilsonandpass.co.za
Tel: +27 82 483 1127



0 2022/10/12 FOR TENDER

Revision	Date	Description
0	2022/10/12	FOR TENDER

NOTE: No construction work to commence until land and servitude acquisitions have been completed.
Acquisitions completed

NORTH POINT

UNDERGROUND SERVICES CHECKED
DATE: _____
SERVICE DATE SIGNATURE
S.W. DRAINS
SEWERS
WATER MAINS
S.P.O. CABLES
ELECTRIC CABLES
S.A.R. CABLES
E.S.C. CABLES
OIL PIPE LINE

NOTE:
Only underground services affected by new construction work are shown. Care must be taken during excavations for road foundations, trenches etc. to avoid damage to underground services such as sewers, drains, cables, water mains and connections. Whenever possible these must be located before work proceeds.

DATE: _____
L. Moodley
Deputy Head: Cleansing & Solid Waste - DSW

PSC 2015/010
Contract No.

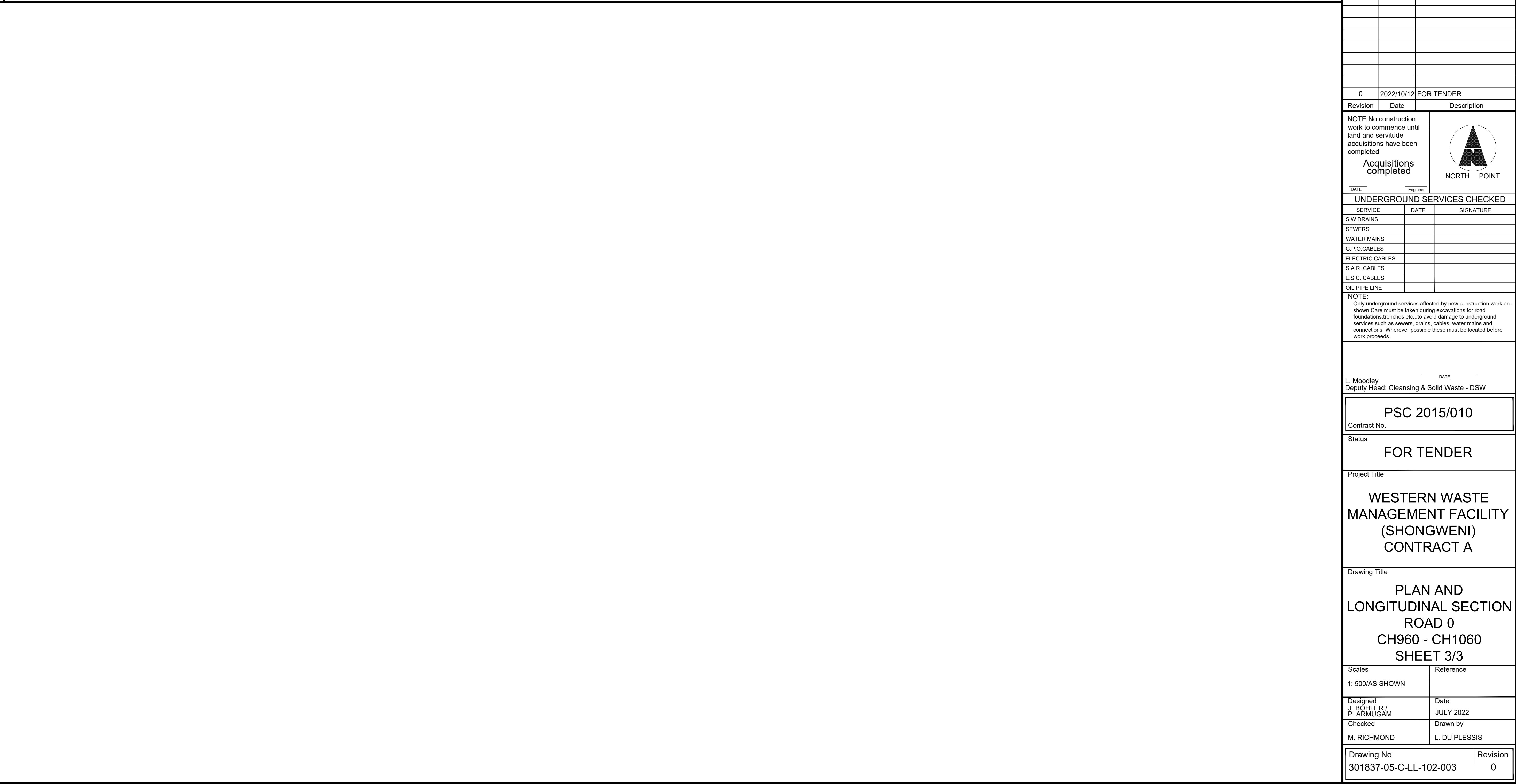
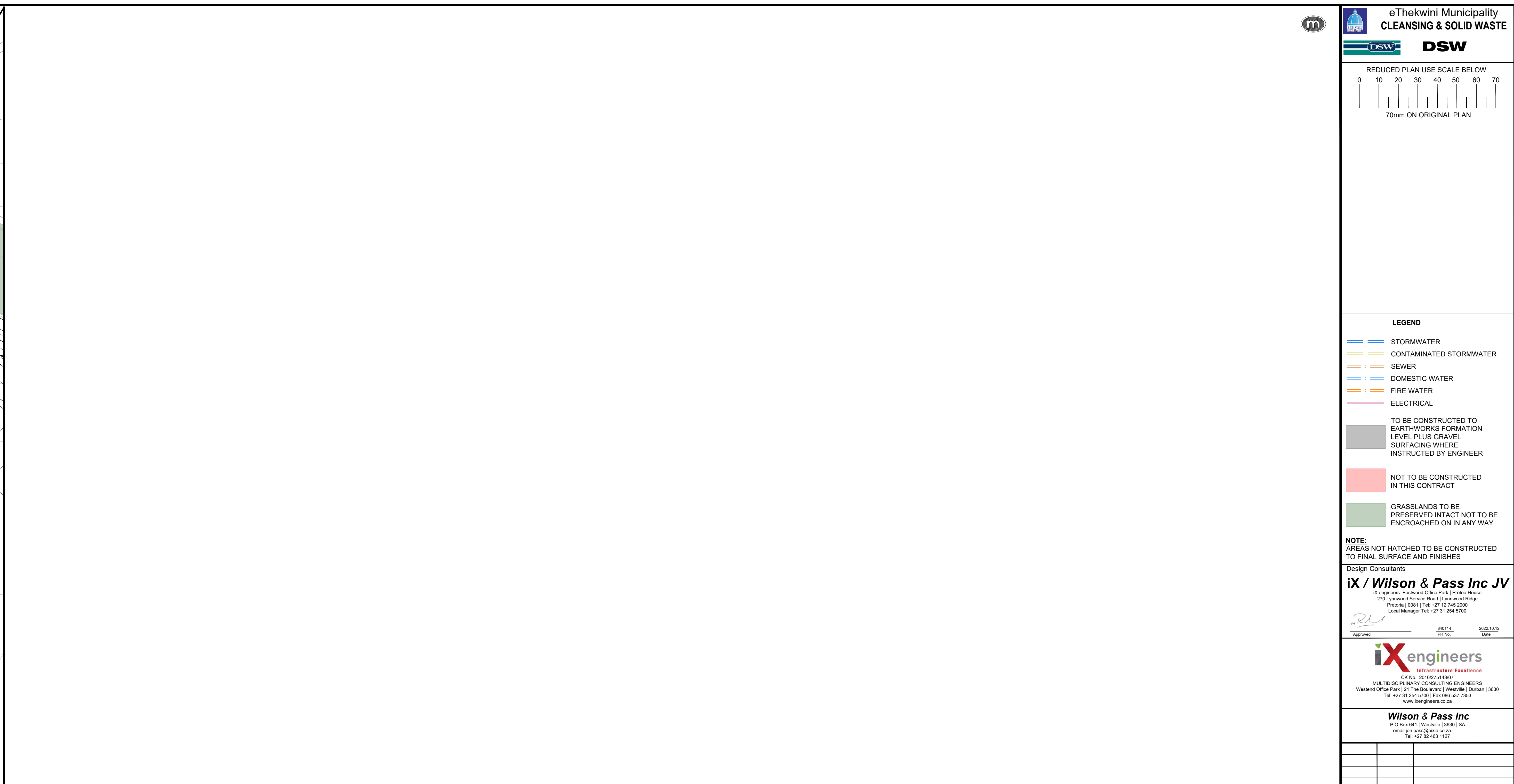
FOR TENDER

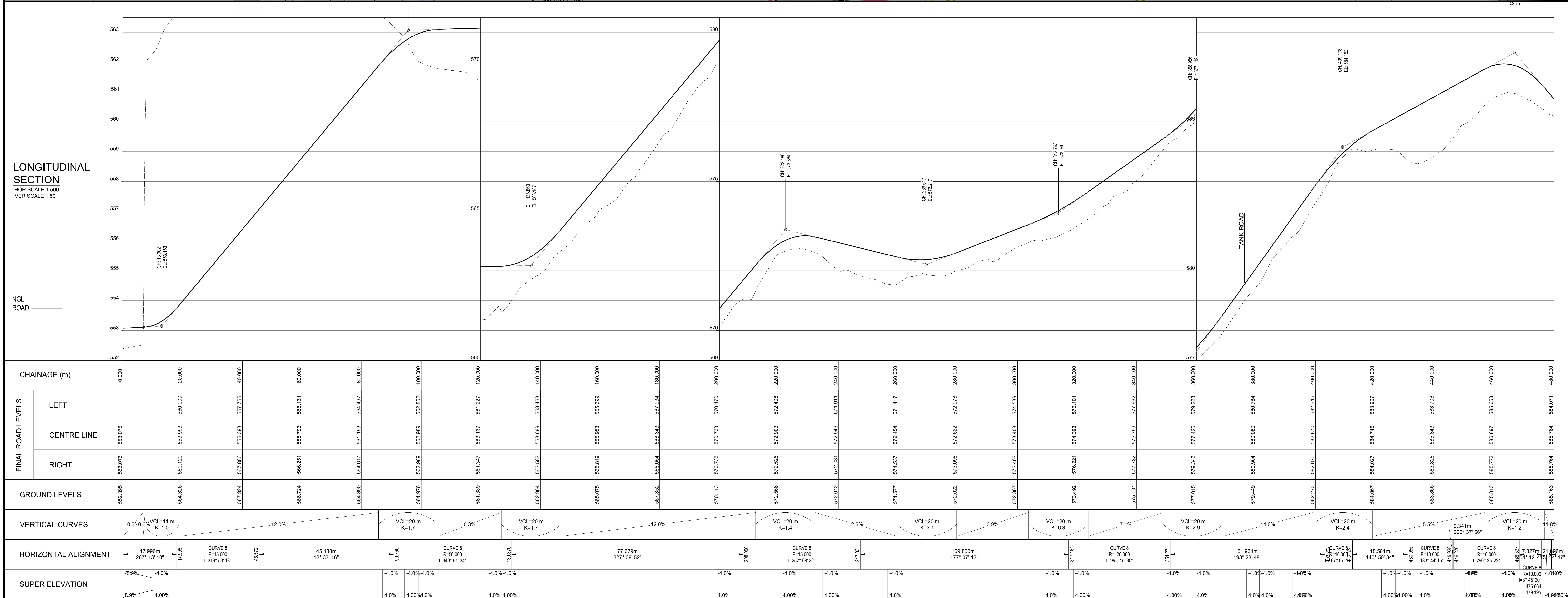
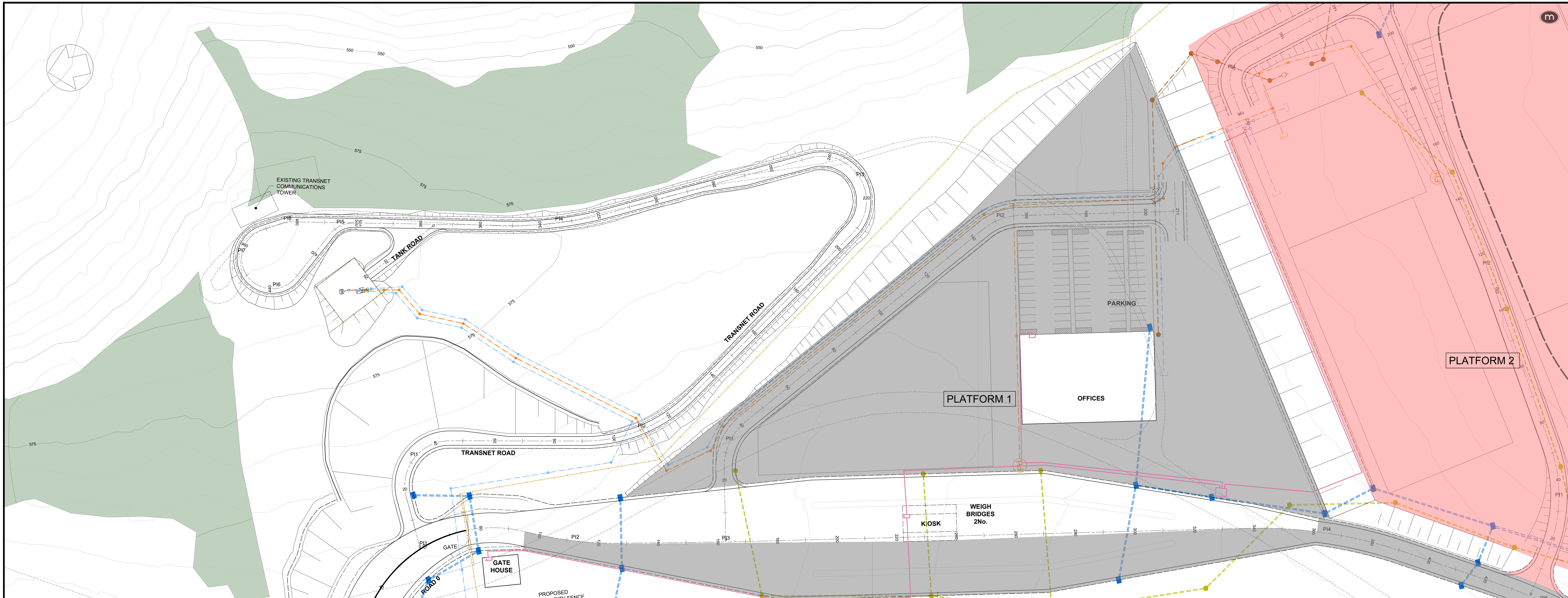
Project Title
WESTERN WASTE MANAGEMENT FACILITY (SHONGWENI) CONTRACT A

Drawing Title
PLAN AND LONGITUDINAL SECTION MR461 CH0 - CH480 SHEET 1/2

Scales
1: 500/AS SHOWN
Reference
Designed by: BOHLER / P. ARMUGAM
Checked by: M. RICHMOND
Date: 12 JUNE 2021
Drawn by: L. DU PLESSIS

Drawing No: 301837-05-C-LL-101-001
Revision: 0





eThekweni Municipality
CLEANSING & SOLID WASTE

DSW

REDUCED PLAN USE SCALE BELOW

0 10 20 30 40 50 60 70

70mm ON ORIGINAL PLAN

LEGEND

STORMWATER

CONTAMINATED STORMWATER

SEWER

DOMESTIC WATER

FIRE WATER

ELECTRICAL

TO BE CONSTRUCTED TO EARTHWORKS FORMATION LEVEL PLUS GRAVEL SURFACING WHERE INSTRUCTED BY ENGINEER

NOT TO BE CONSTRUCTED IN THIS CONTRACT

GRASSLANDS TO BE PRESERVED INTACT NOT TO BE ENCROACHED ON IN ANY WAY

NOTE:

AREAS NOT HATCHED TO BE CONSTRUCTED TO FINAL SURFACE AND FINISHES

Design Consultants

ix / Wilson & Pass Inc JV
ixengineers (Eastern Office Park) | Probe House
270 Lymington Avenue | Lymington Ridge
Durban 4013 | Tel: +27 31 254 5100 | Fax: +27 31 254 5101
Local Manager Tel: +27 31 254 5101

ixengineers
Infrastructure Excellence
MULTIDISCIPLINARY CONSULTING ENGINEERS
Western Office Park | 21 The Boulevard | Westville | Durban | 4013
Tel: +27 31 254 5100 | Fax: +27 31 254 5101
www.ixengineers.co.za

Wilson & Pass Inc
P.O. Box 641 | Westville | 4013 | SA
email: j.p@wilsonpass.co.za
Tel: +27 31 254 5101

0

2022/10/12

FOR TENDER

Revision

Date

Description

NOTE: No construction work to commence until land and servitude acquisitions have been completed

Acquisitions completed

UNDERGROUND SERVICES CHECKED

SERVICE	DATE	SIGNATURE
S.W. DRAINS		
SEWERS		
WATER MAINS		
S.P.O. CABLES		
ELECTRIC CABLES		
S.A.R. CABLES		
E.S.C. CABLES		
UL PIPE LINE		

NOTE:

Only underground services affected by new construction work are shown. Care must be taken during excavations for road foundations, trenches etc. to avoid damage to underground services such as sewers, drains, cables, water mains and connections. Whenever possible these must be located before work proceeds.

DATE

L. Moodley

Deputy Head: Cleansing & Solid Waste - DSW

PSC 2015/010

Contract No.

FOR TENDER

Project Title

WESTERN WASTE MANAGEMENT FACILITY (SHONGWENI) CONTRACT A

Drawing Title

**PLAN & LONGITUDINAL SECTIONS
TRANSNET ROAD
CH0 - CH480
SHEET 1/2**

Scales

1: 500/AS SHOWN

Reference

Date

July 2022

Designed

P. ARMUGAM

Checked

M. RICHMOND

Drawn by

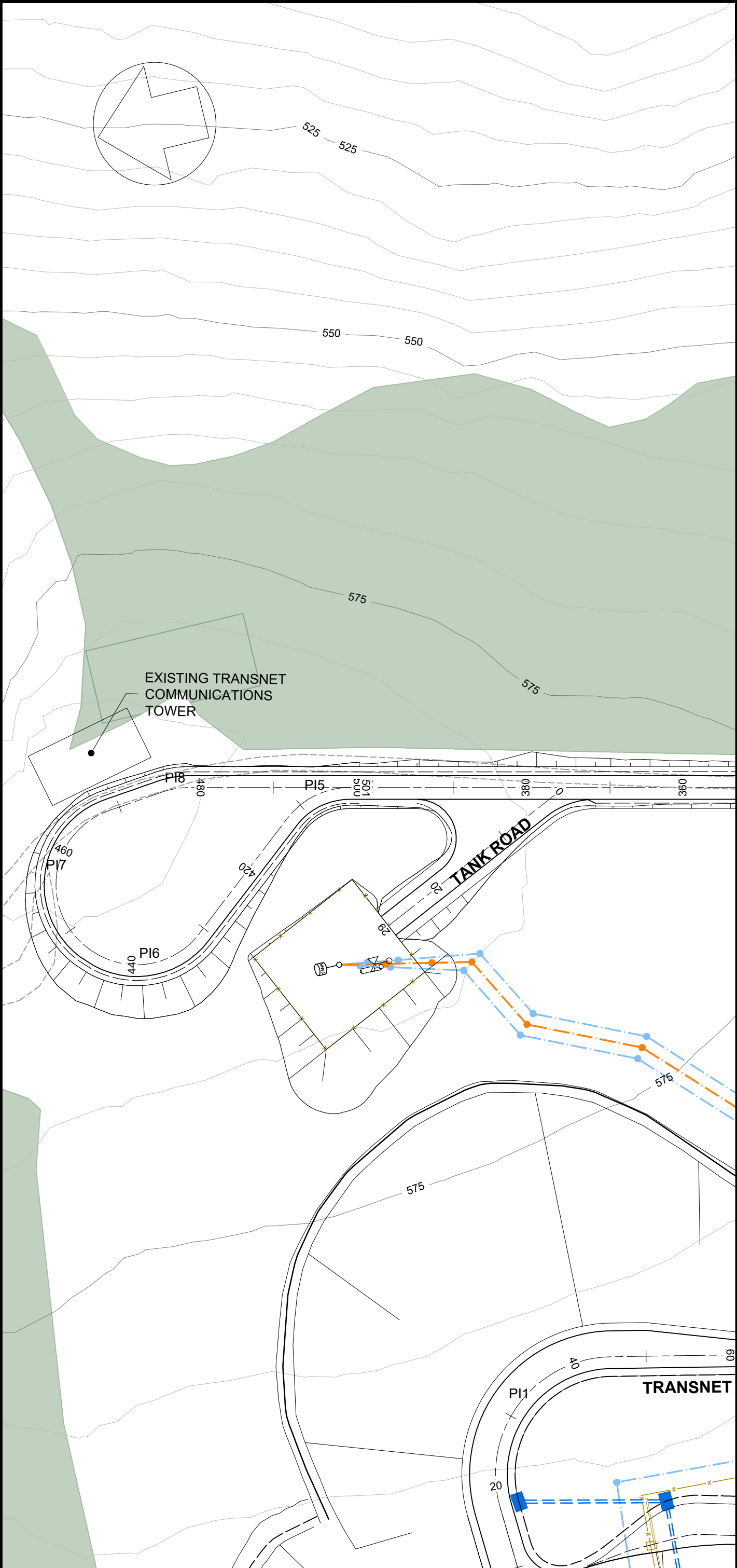
L. DU PLESSIS

Drawing No

301837-05-C-LL-104-001

Revision

0



LONGITUDINAL SECTION
HOR SCALE 1:500
VER SCALE 1:50

NGL - - - - -
ROAD - - - - -

CHAINAGE (m)			
FINAL ROAD LEVELS	LEFT	584.071	500.000
	CENTRE LINE	585.704	583.404
	RIGHT	587.731	582.276
		582.562	581.090
GROUND LEVELS		585.163	582.562
VERTICAL CURVES		-11.8%	
HORIZONTAL ALIGNMENT		21.896m 13° 24' 17"	
SUPER ELEVATION		+0.0%	

LONGITUDINAL SECTION
HOR SCALE 1:500
VER SCALE 1:50

NGL - - - - -
ROAD - - - - -

CHAINAGE (m)			
FINAL ROAD LEVELS	LEFT		20.000
	CENTRE LINE	579.487	582.341
	RIGHT		585.000
			582.527
GROUND LEVELS		579.487	581.312
VERTICAL CURVES		8.5% VCL=10 m K=1.0 18.2% VCL=10 m K=0.6 0.0%	
HORIZONTAL ALIGNMENT		28.527m 155° 13' 40"	
SUPER ELEVATION			

eThekweni Municipality
CLEANSING & SOLID WASTE

DSW

REDUCED PLAN USE SCALE BELOW

010203040506070

70mm ON ORIGINAL PLAN

LEGEND

STORMWATER

CONTAMINATED STORMWATER

SEWER

DOMESTIC WATER

FIRE WATER

ELECTRICAL

TO BE CONSTRUCTED TO EARTHWORKS FORMATION LEVEL PLUS GRAVEL SURFACING WHERE INSTRUCTED BY ENGINEER

NOT TO BE CONSTRUCTED IN THIS CONTRACT

GRASSLANDS TO BE PRESERVED INTACT NOT TO BE ENCROACHED ON IN ANY WAY

NOTE:

AREAS NOT HATCHED TO BE CONSTRUCTED TO FINAL SURFACE AND FINISHES

Design Consultants

ix / Wilson & Pass Inc JV

ixengineers

Wilson & Pass Inc

02022/10/12

FOR TENDER

Revision

Date

Description

NOTE: No construction work to commence until land and servitude acquisitions have been completed

Acquisitions completed

DATE

SIGNATURE

UNDERGROUND SERVICES CHECKED

SERVICE

DATE

SIGNATURE

SEWERS

WATER MAINS

S.P.O. CABLES

ELECTRIC CABLES

S.A.R. CABLES

E.S.C. CABLES

OIL PIPE LINE

NOTE:

Only underground services affected by new construction work are shown. Care must be taken during excavations for road foundations, trenches etc. to avoid damage to underground services such as sewers, drains, cables, water mains and connections. Whenever possible these must be located before work proceeds.

DATE

L. Moodley

Deputy Head: Cleansing & Solid Waste - DSW

Contract No.

PSC 2015/010

Status

FOR TENDER

Project Title

WESTERN WASTE MANAGEMENT FACILITY (SHONGWENI) CONTRACT A

Drawing Title

PLAN & LONGITUDINAL SECTIONS
TRANSNET ROAD
CH480 - CH501.09 & TANK
CH0 - CH16.469
SHEET 2/2

Scales

1: 500/AS SHOWN

Reference

Designed

J. BOKLER / P. ARMUGAM

Date

JULY 2022

Checked

M. RICHMOND

Drawn by

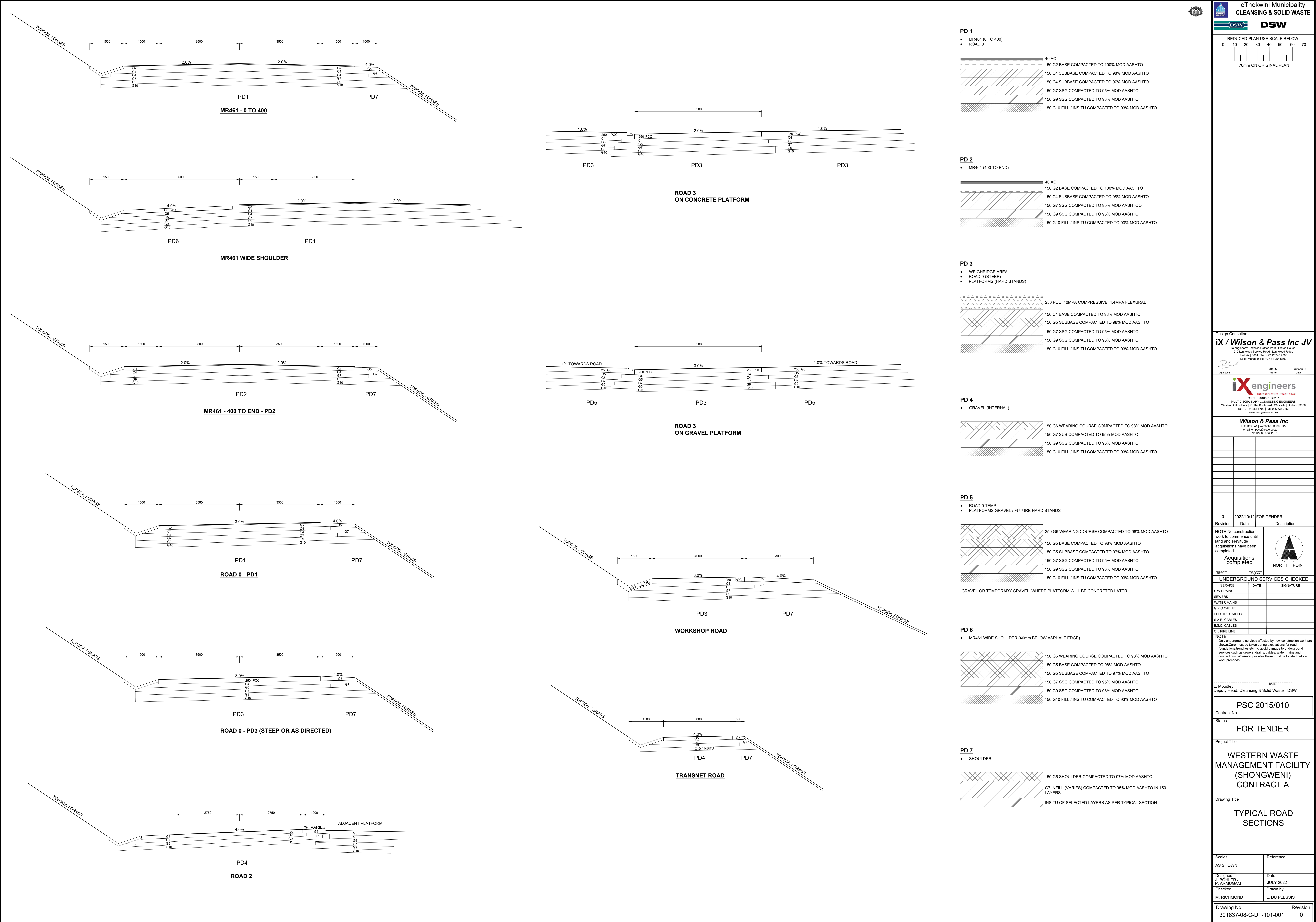
L. DU PLESSIS

Drawing No

301837-05-C-LL-104-002

Revision

0



eThekweni Municipality
CLEANSING & SOLID WASTE

DSW

REDUCED PLAN USE SCALE BELOW
0 10 20 30 40 50 60 70
70mm ON ORIGINAL PLAN

Design Consultants
ix / Wilson & Pass Inc JV
ix engineers, Eastern Office Park | Protea House
270 Lynnwood Service Road | Lynnwood Ridge
Pretoria | 0081 | Tel: +27 12 745 2000
Local Manager Tel: +27 31 254 5700

ix engineers
Infrastructure Excellence
CK No. 2016/27514307
MULTIDISCIPLINARY CONSULTING ENGINEERS
Western Office Park | 21 The Boulevard | Westville | Durban | 3630
Tel: +27 31 254 5700 | Fax: 086 537 7553
www.ixengineers.co.za

Wilson & Pass Inc
P.O. Box 641 | Westville | 3630 | SA
email: jpw@wilsonandpass.co.za
Tel: +27 82 463 1127

Revision	Date	Description
0	2022/10/12	FOR TENDER

NOTE: No construction work to commence until land and servitude acquisitions have been completed.

Acquisitions completed

DATE: 2022/10/12

SERVICE	DATE	SIGNATURE
S.W DRAINS		
SEWERS		
WATER MAINS		
S.P.O. CABLES		
ELECTRIC CABLES		
S.A.R. CABLES		
E.S.C. CABLES		
OIL PIPE LINE		

NOTE:
Only underground services affected by new construction work are shown. Care must be taken during excavations for road foundations, trenches etc. to avoid damage to underground services such as sewers, drains, cables, water mains and connections. Wherever possible these must be located before work proceeds.

DATE: _____
L. Moodley
Deputy Head: Cleansing & Solid Waste - DSW

PSC 2015/010
Contract No.

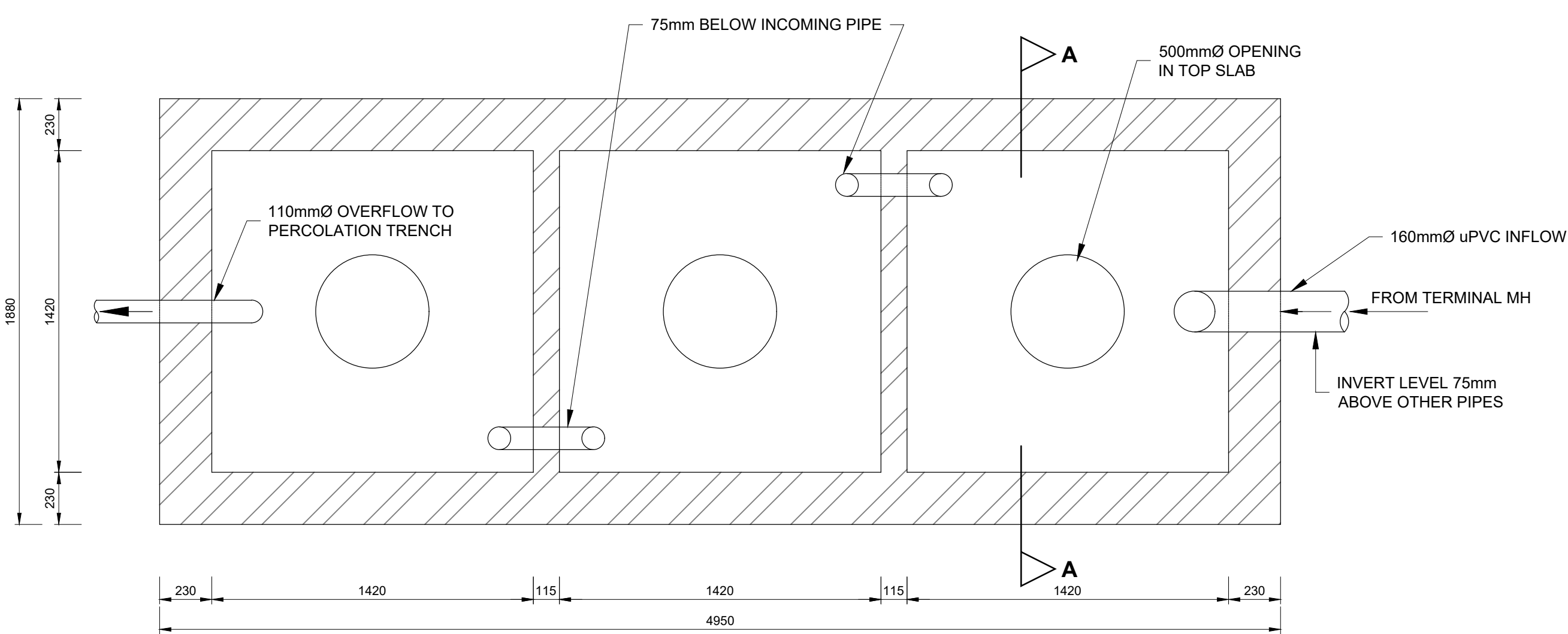
Status

Project Title
WESTERN WASTE MANAGEMENT FACILITY (SHONGWENI) CONTRACT A

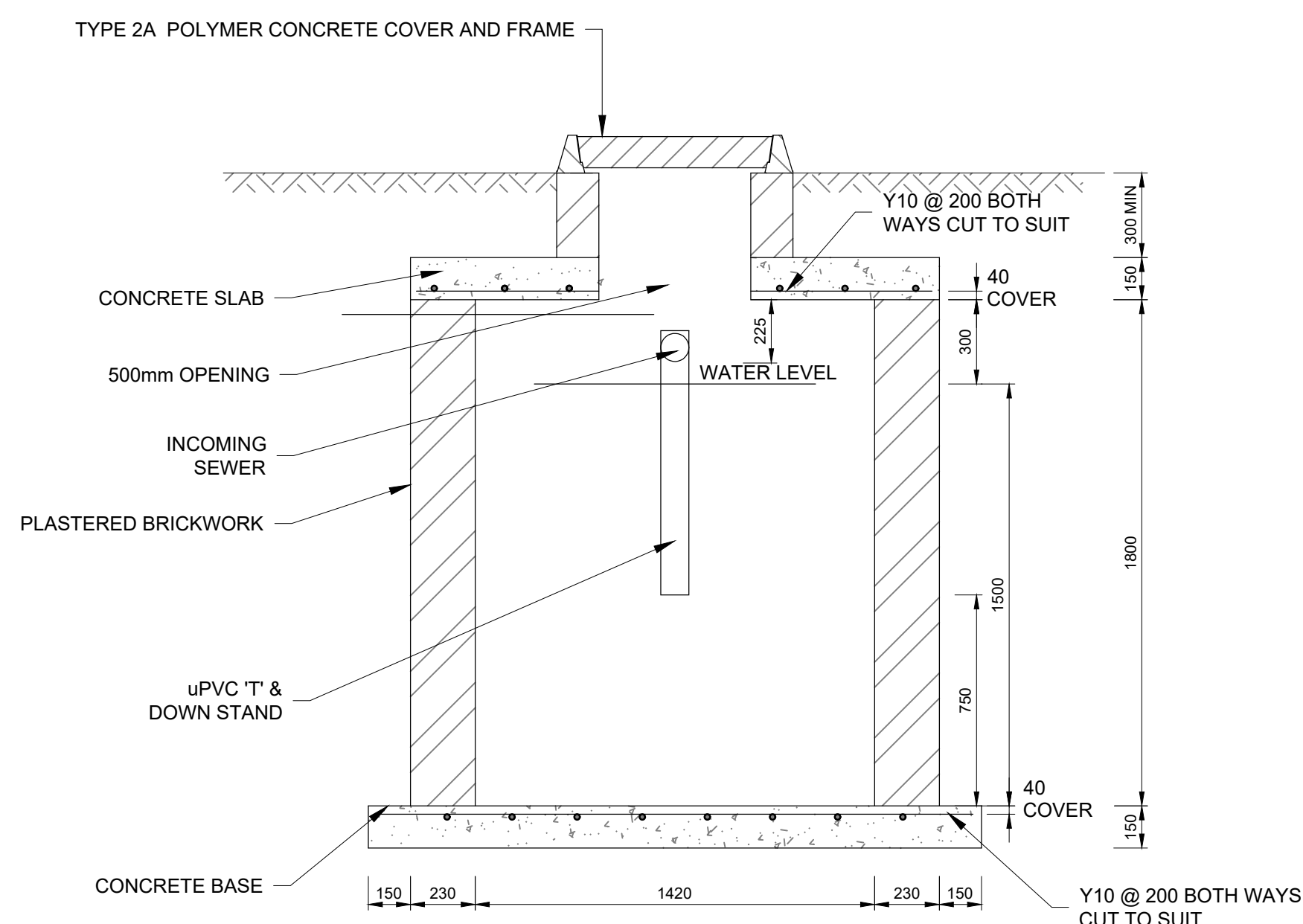
Drawing Title
TYPICAL ROAD SECTIONS

Scales	Reference
AS SHOWN	Date
Designed J. BOHLER / P. ARMUGAM	JULY 2022
Checked M. RICHMOND	Drawn by L. DU PLESSIS

Drawing No	Revision
301837-08-C-DT-101-001	0

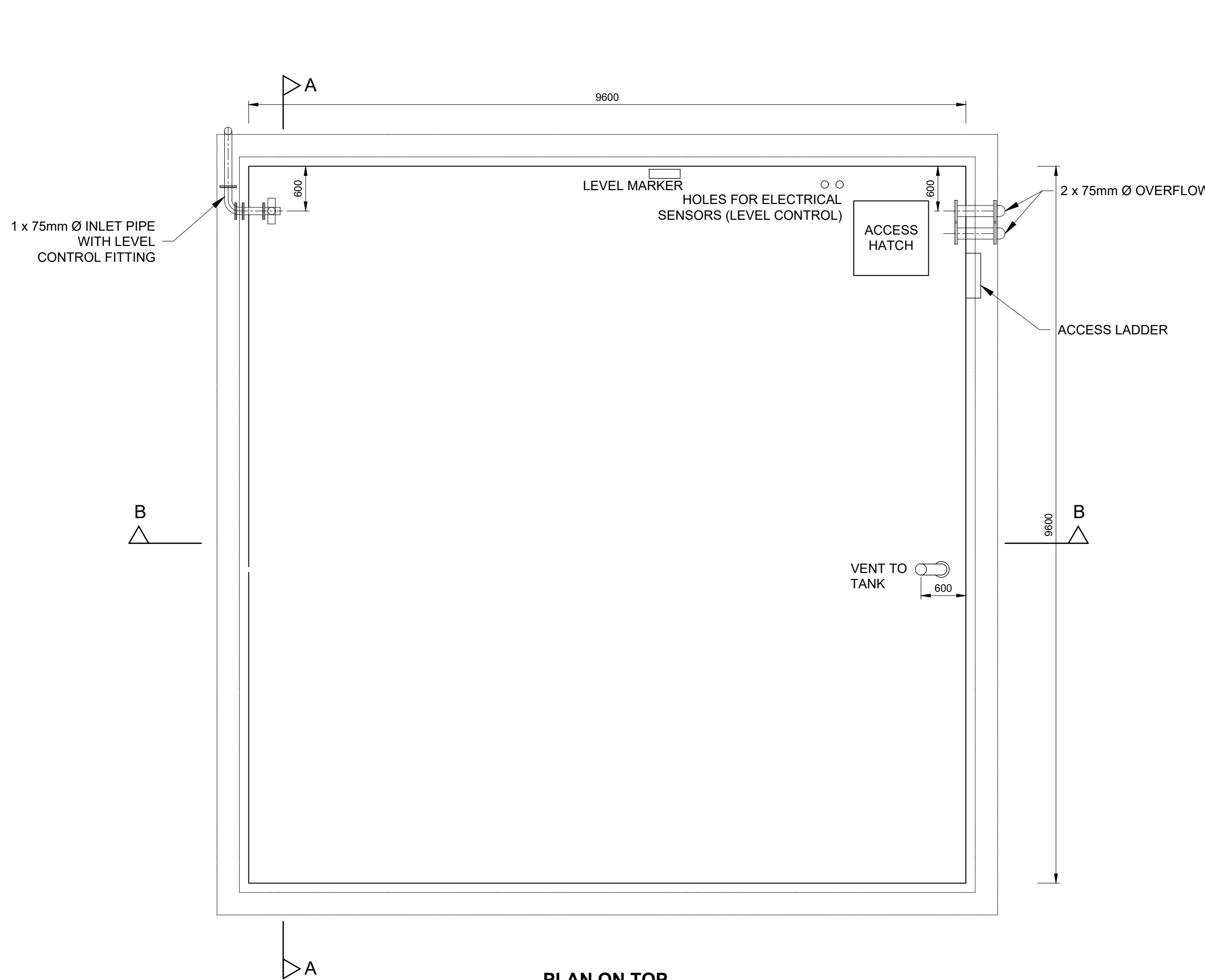


PLAN LAYOUT
SCALE 1:20

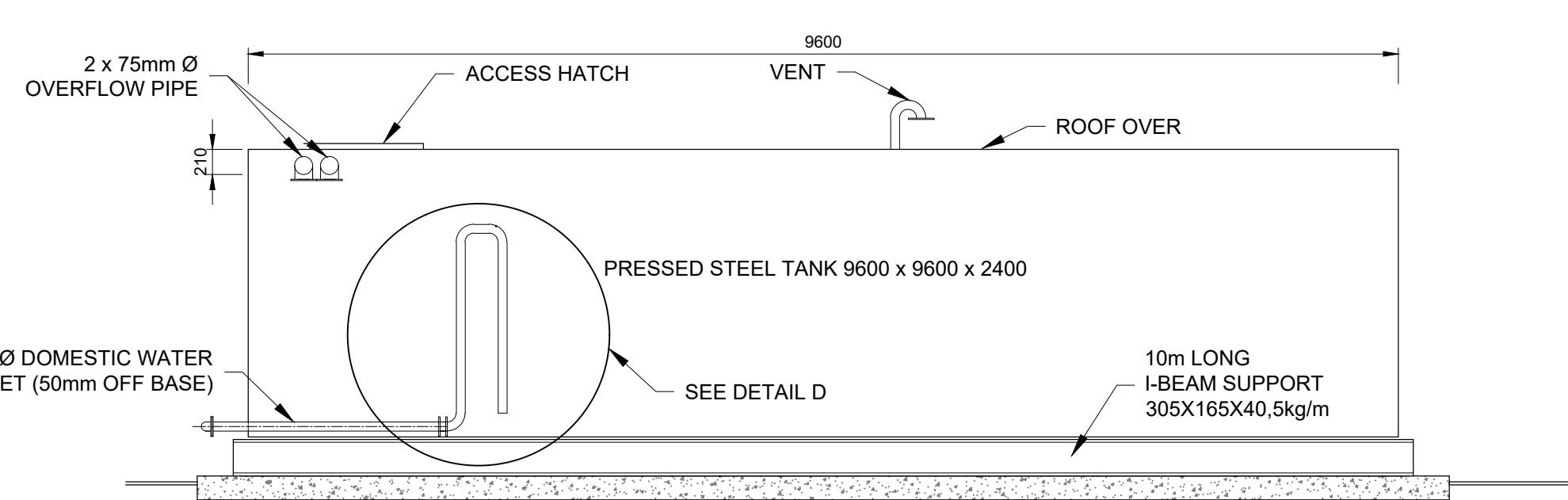


SECTION A - A
SCALE 1:20

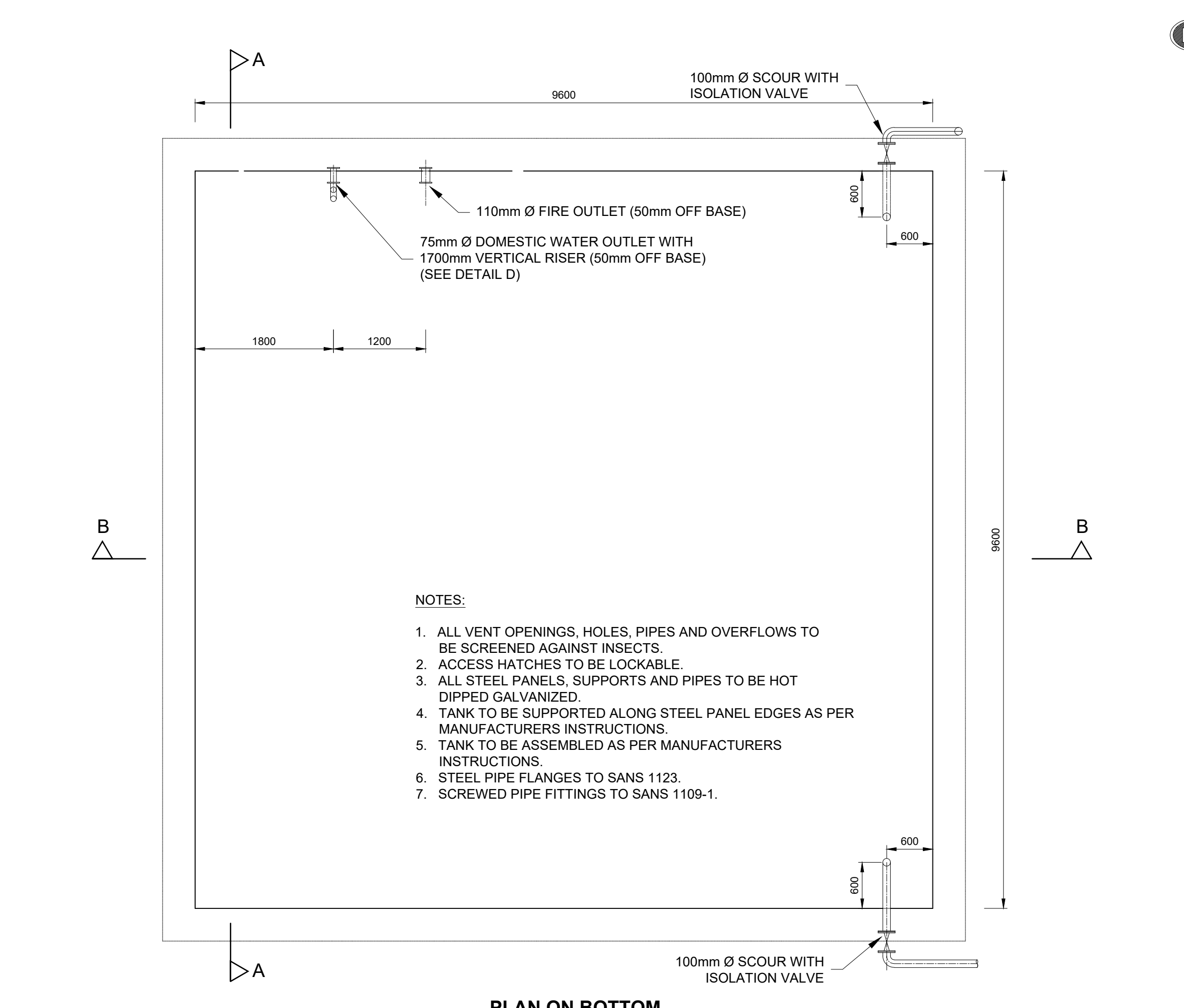
9000 LITRE CAPACITY SEPTIC TANK



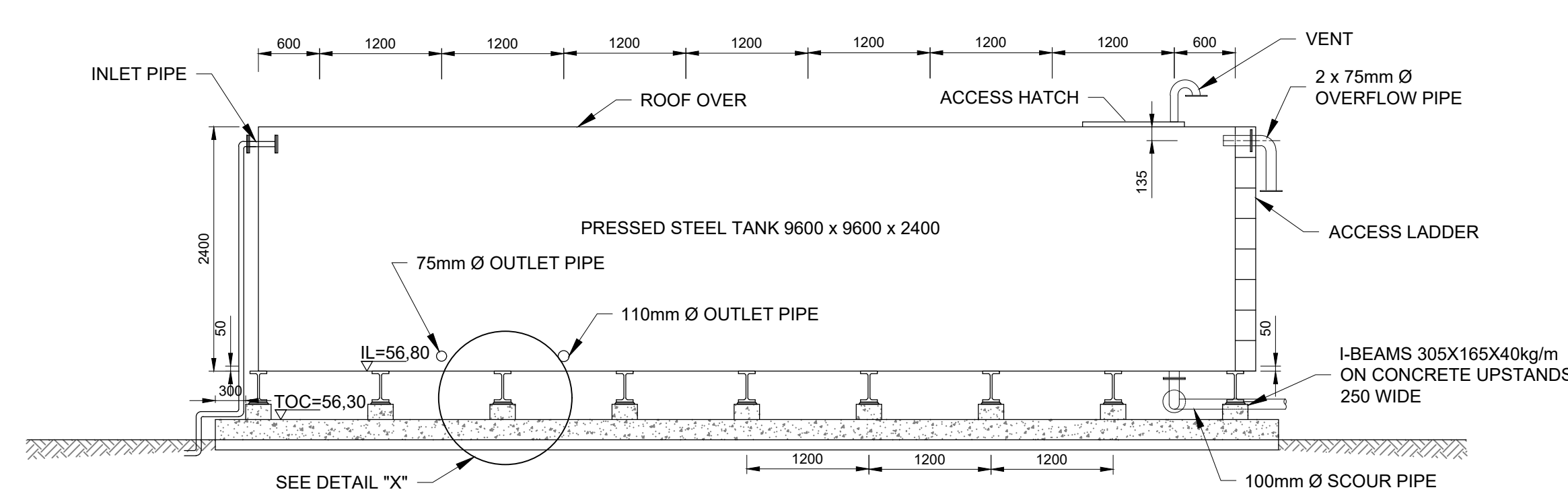
PLAN ON TOP
SCALE 1:50



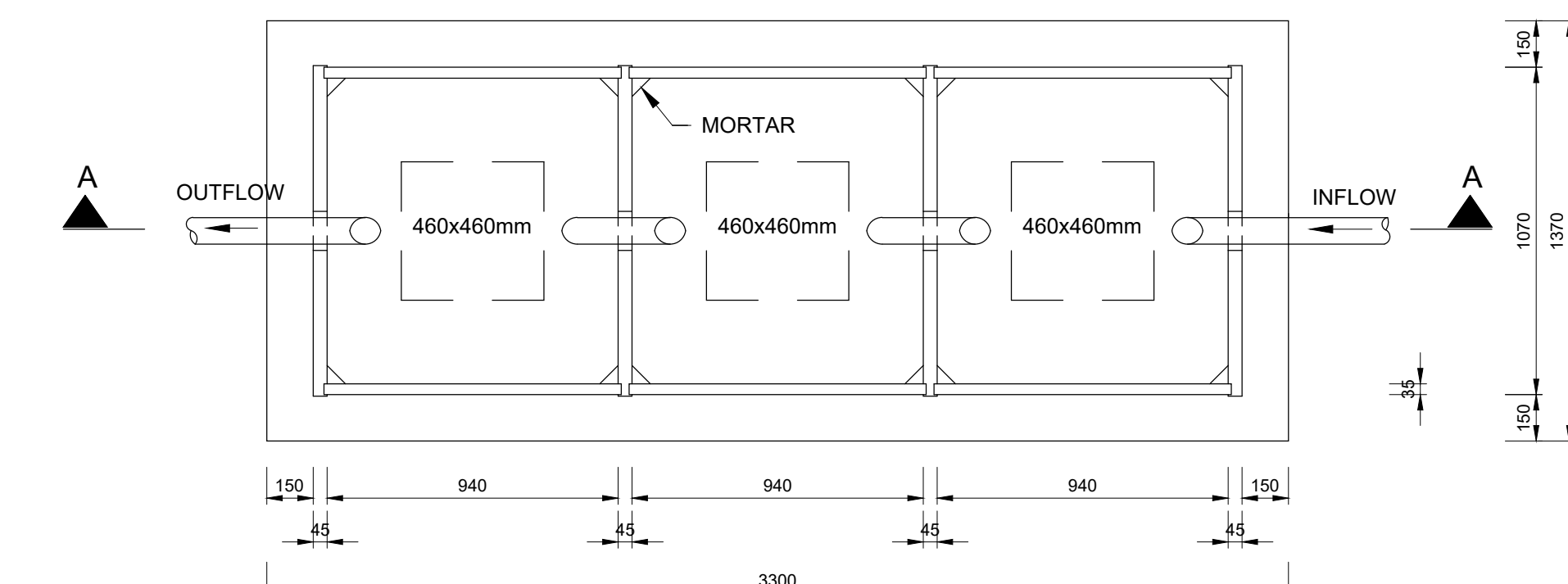
SECTION A - A
SCALE 1:50



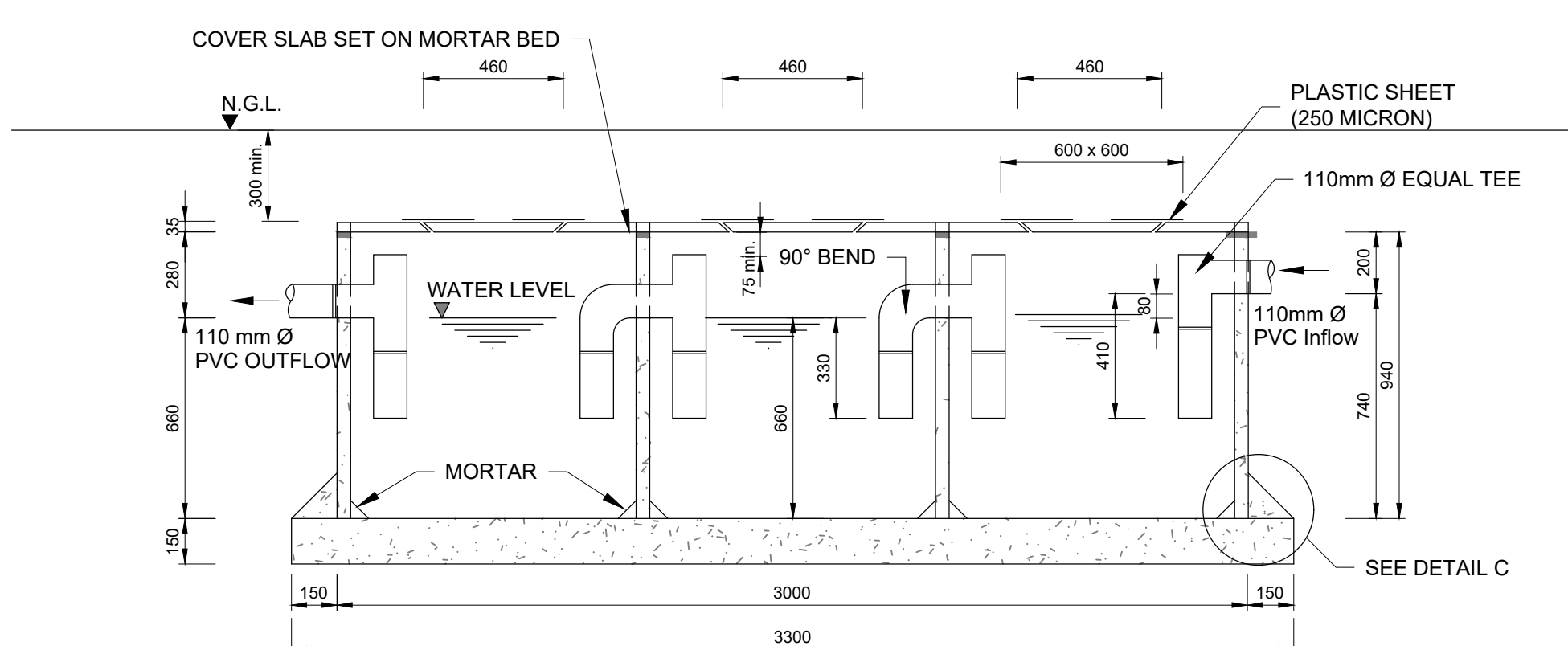
PLAN ON BOTTOM
SCALE 1:50



SECTION B - B
SCALE 1:50



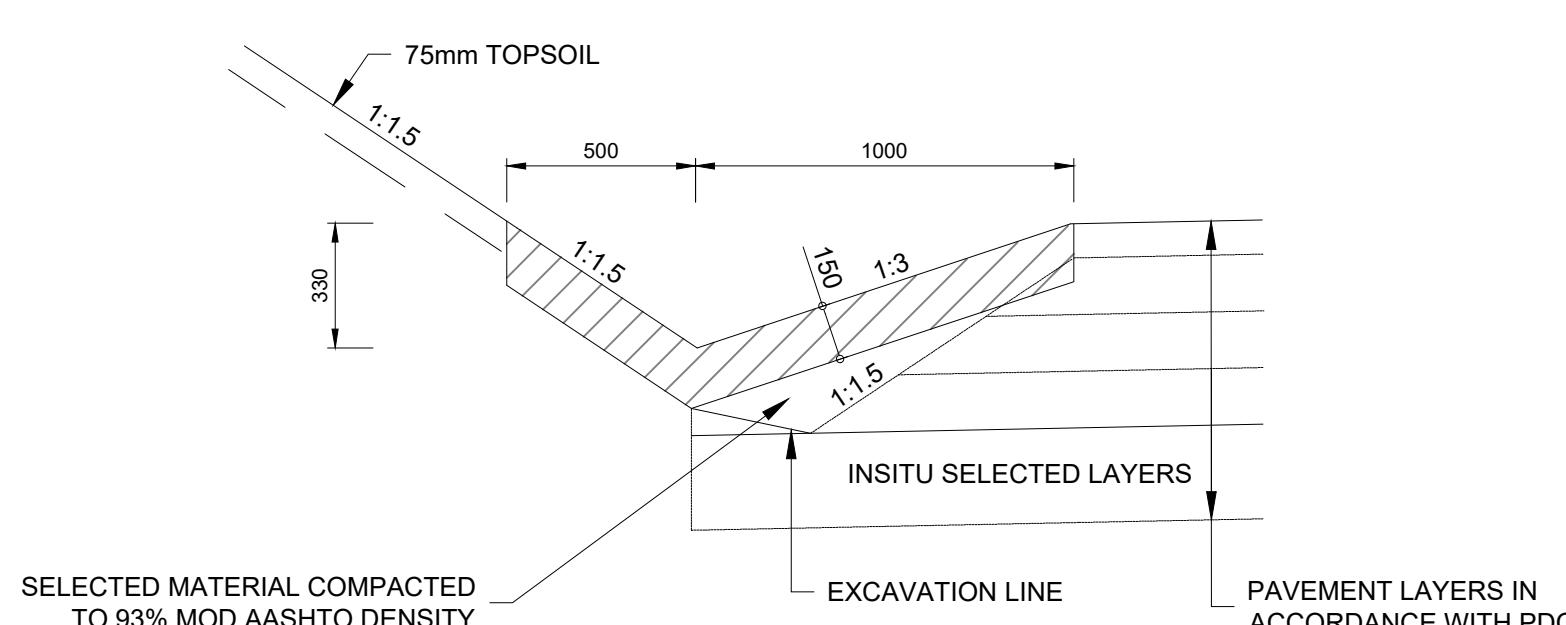
PLAN OF PRECAST CONCRETE SEPTIC TANK 1700 LITRE CAPACITY
SCALE 1:20



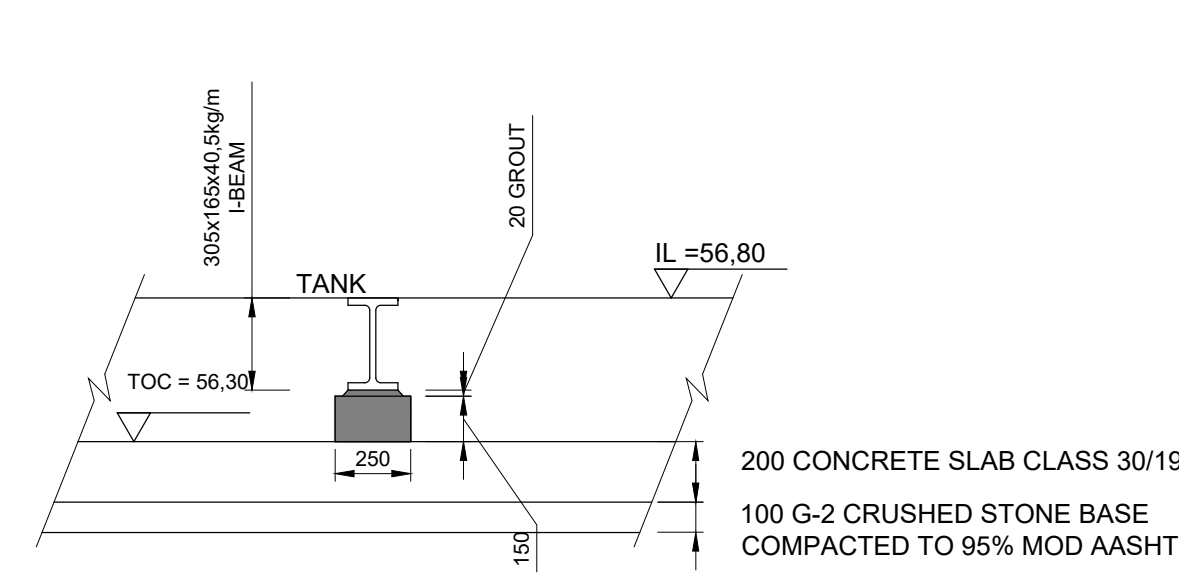
SECTION A - A
SCALE 1:20

- NOTES:
- SEPTIC TANK CONSISTS OF STANDARD PRECAST PANELS. SEE L.G. GREEN CATALOGUE - PRODUCT P106
 - ALL JOINTS TO BE SEALED USING MORTAR OR BITUMEN PLASTIC

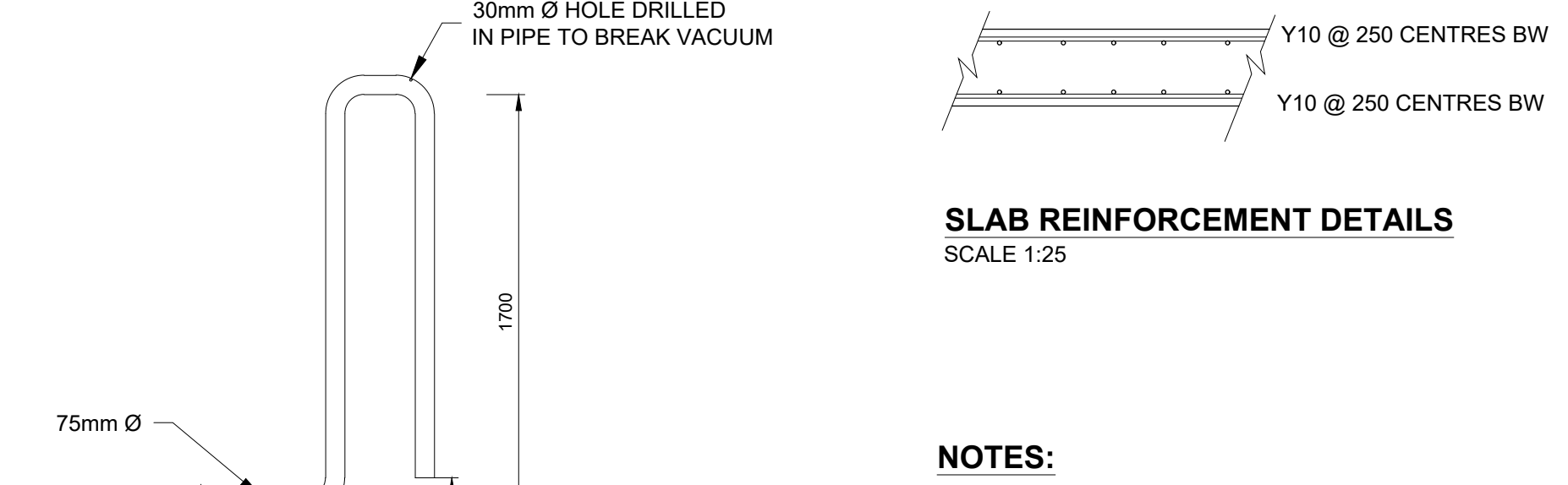
PRECAST CONCRETE SEPTIC TANK 1700 LITRE CAPACITY



SD 0601/2: GRASSED OR CONCRETE-LINED 1000 V-DRAIN
(NOTE: FOR USE WITH SUBSOIL DRAINS IN DEEP CUTTINGS)
SCALE 1:20

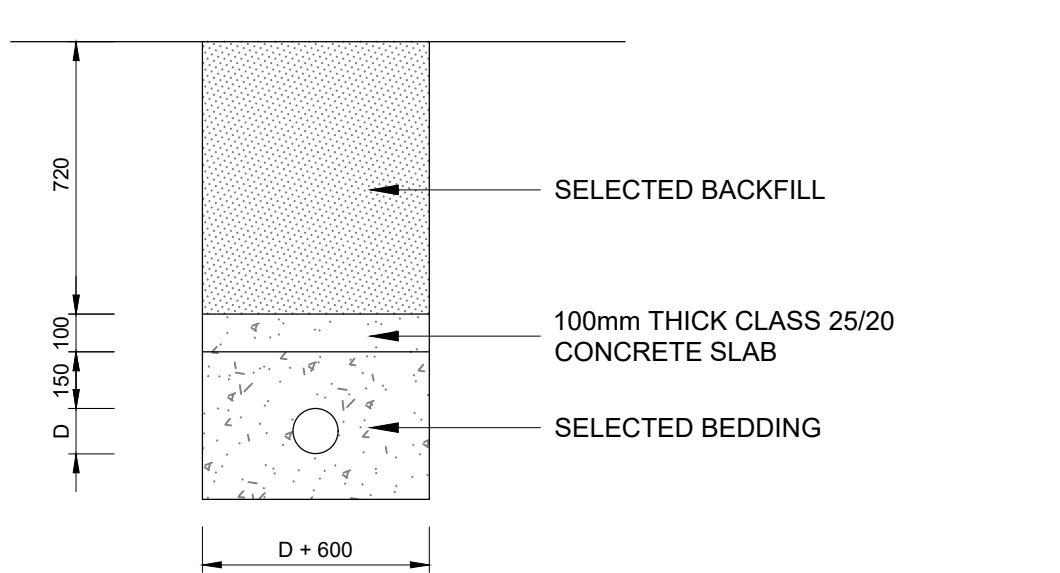


DETAIL "X" TANK SUPPORT BEAM AND SLAB
SCALE 1:25

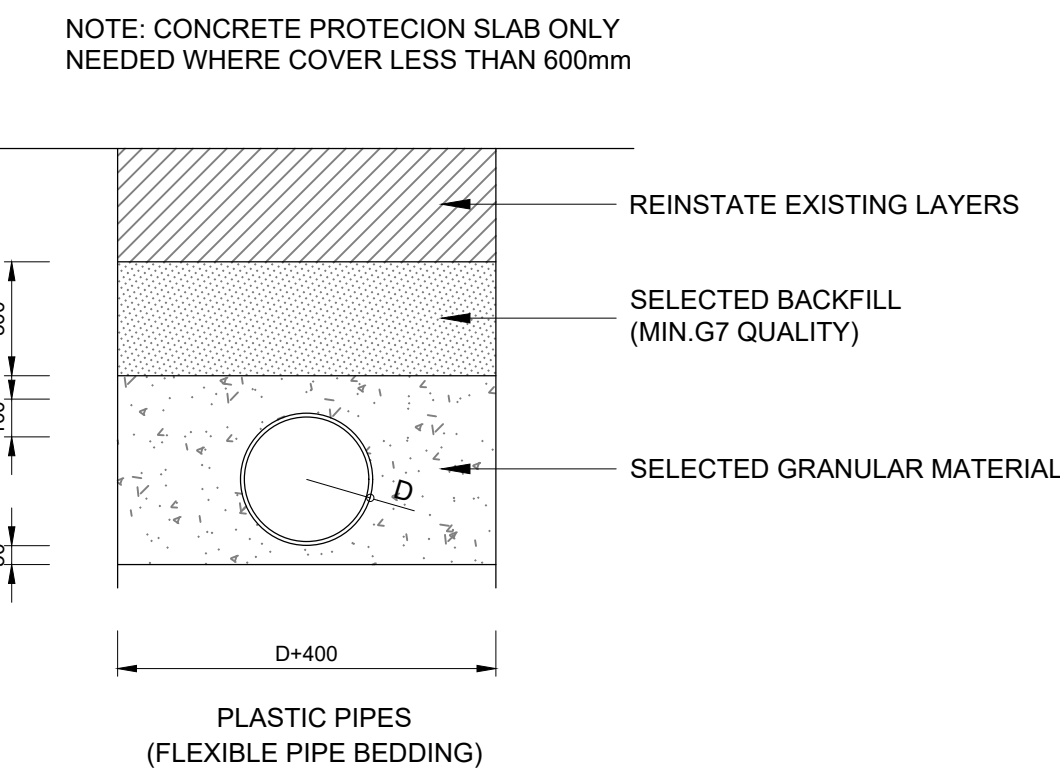


DETAIL D (DOMESTIC OUTLET)
SCALE 1:25

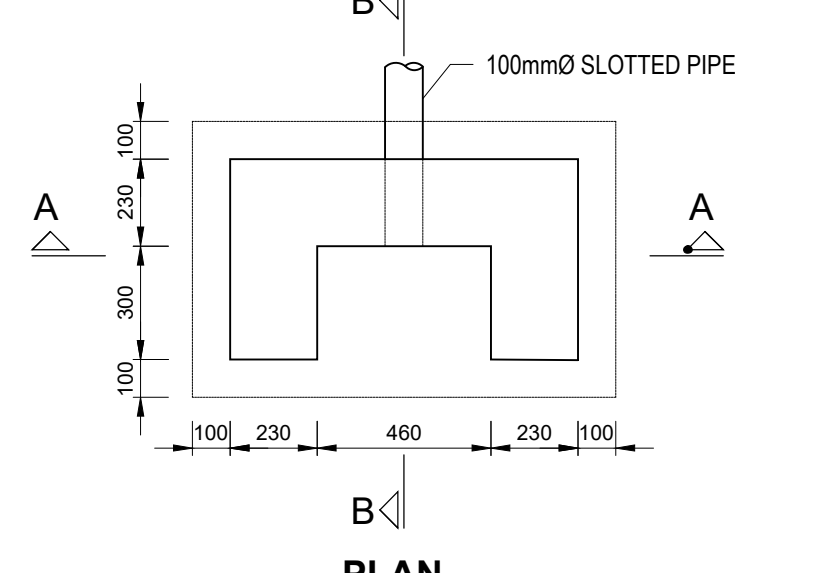
WATER STORAGE TANK DETAILS



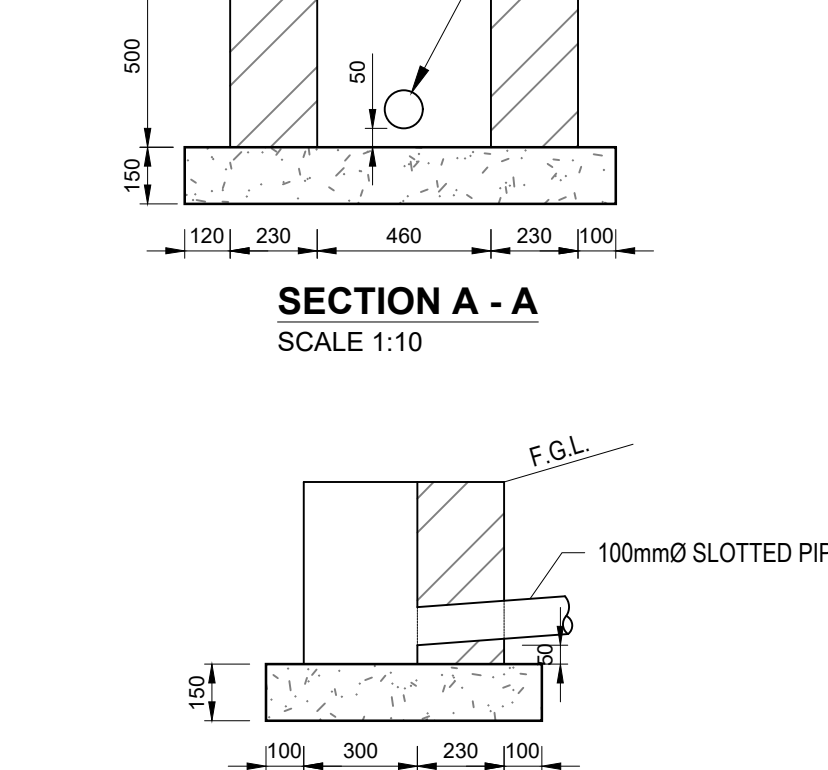
DETAIL OF PIPE PROTECTION
SCALE 1:20



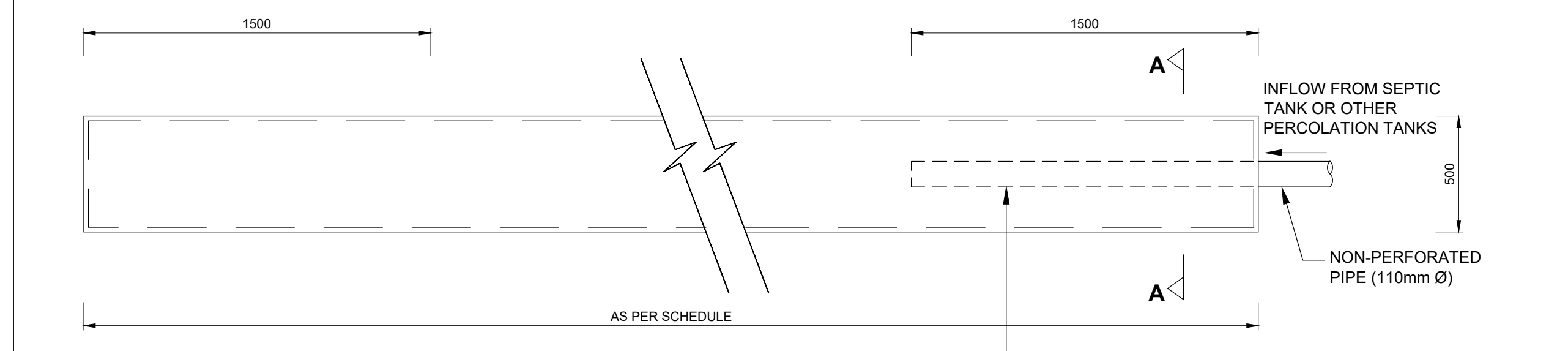
FLEXIBLE PIPE BEDDING AND BACKFILL
SCALE 1:20



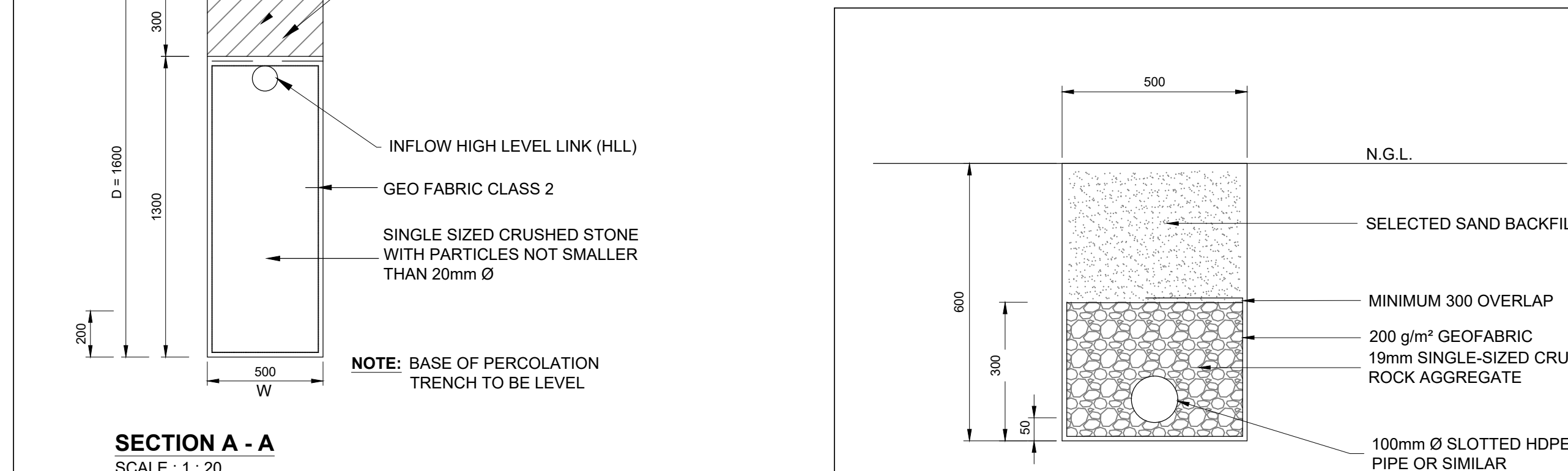
PLAN
SCALE 1:10



SECTION A - A
SCALE 1:10

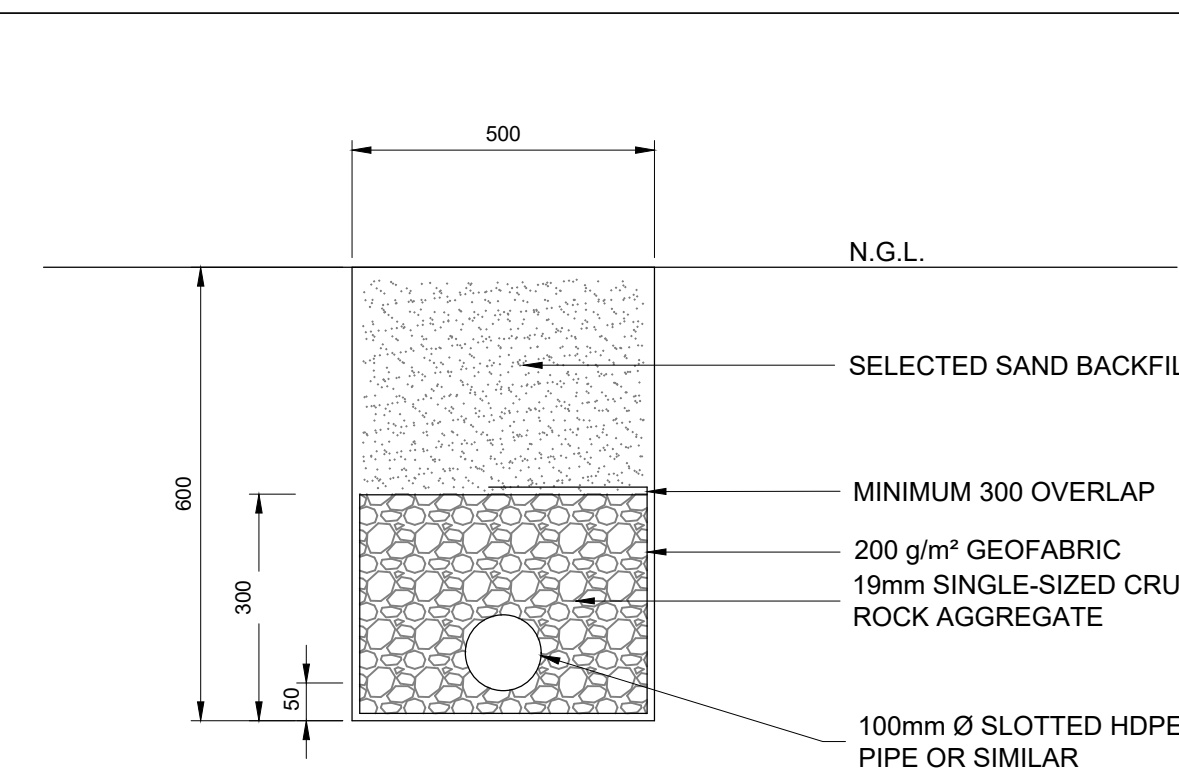


PLAN
SCALE 1:20



SECTION A - A
SCALE 1:20

TYPICAL SEWER DISPOSAL PERCOLATION TRENCH



SUBSOIL DRAIN
NOT TO SCALE

eThekweni Municipality
CLEANSING & SOLID WASTE

DSW

REDUCED PLAN USE SCALE BELOW

70mm ON ORIGINAL PLAN

Design Consultants

ix / Wilson & Pass Inc JV

ix engineers (Eastern Office Park) Private House
270 Lynwood Service Road | Lynwood Ridge
Durban | 4001 | Tel: +27 31 254 5700
Local Manager Tel: +27 31 254 5700

ix engineers
Infrastructure Excellence
MULTIDISCIPLINARY CONSULTING ENGINEERS
Western Office Park | 21 The Boulevard | Westville | Durban | 4001
Tel: +27 31 254 5700 Fax: 086 537 7155
www.ixengineers.co.za

Wilson & Pass Inc
P.O. Box 641 | Westville | 4001 | SA
email: j.p.wilson@wipass.co.za
Tel: +27 82 483 1127

Revision	Date	Description
0	2022/10/12	FOR TENDER

NOTE: No construction work to commence until land and servitude acquisitions have been completed

Acquisitions completed

DATE: 2022/10/12

UNDERGROUND SERVICES CHECKED

SERVICE	DATE	SIGNATURE
S.W DRAINS		
SEWERS		
WATER MAINS		
S.P.O. CABLES		
ELECTRIC CABLES		
S.A.R. CABLES		
E.S.C. CABLES		
OIL PIPE LINE		

NOTE: Only underground services affected by new construction work are shown. Care must be taken during excavations for road foundations, trenches etc. to avoid damage to underground services such as sewers, drains, cables, water mains and connections. Wherever possible these must be located before work proceeds.

DATE: 2022/10/12

L. Moodley
Deputy Head: Cleansing & Solid Waste - DSW

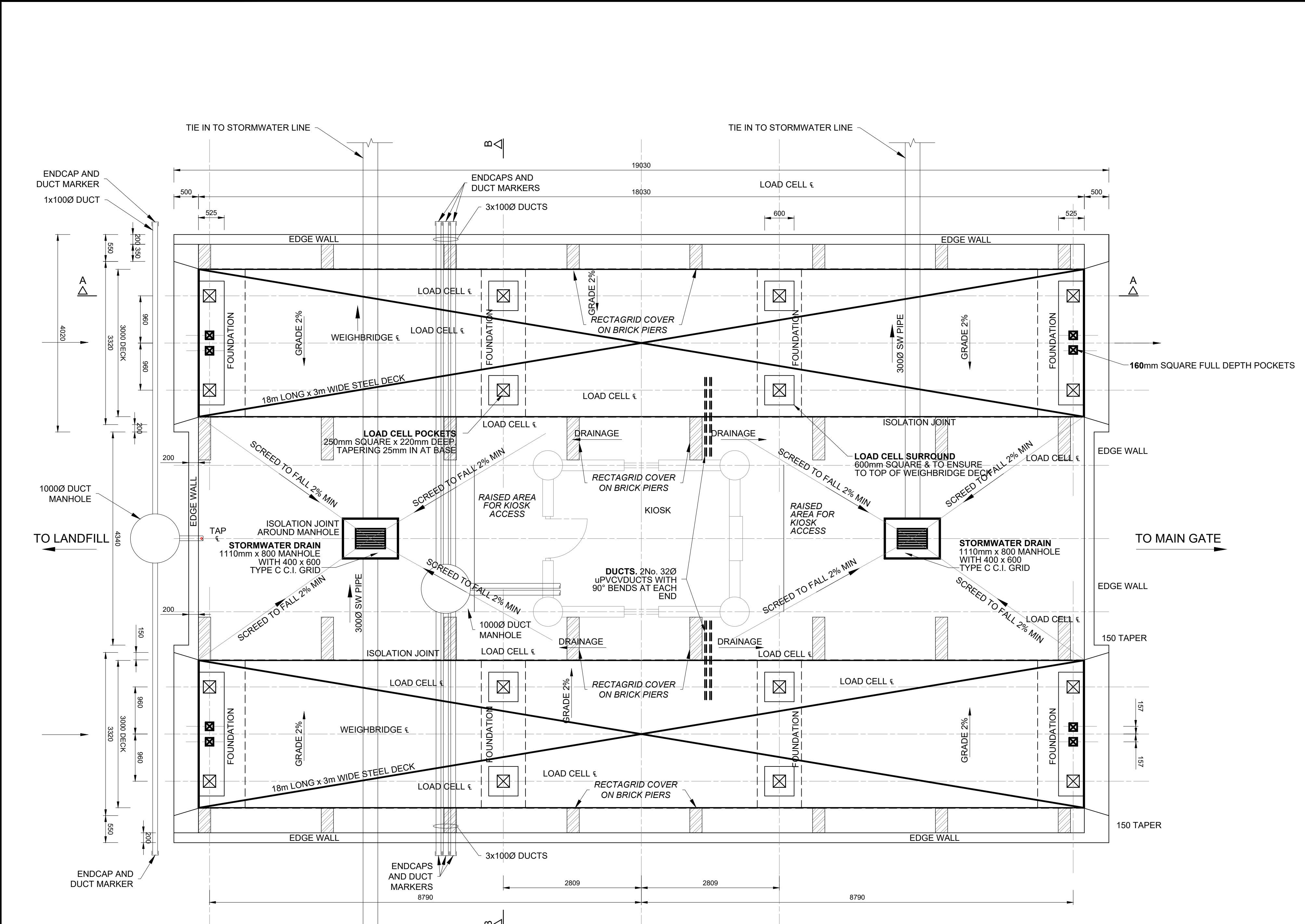
Contract No. **PSC 2015/010**

Status: **FOR TENDER**

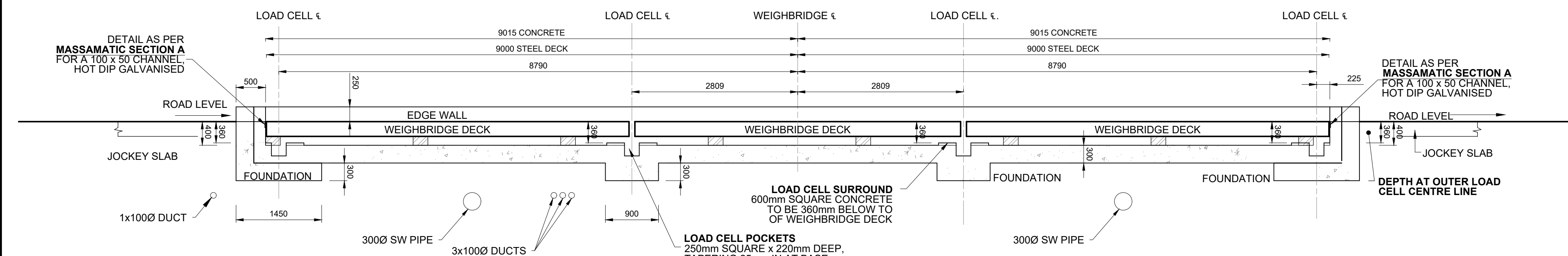
Project Title: **WESTERN WASTE MANAGEMENT FACILITY (SHONGWENI) CONTRACT A**

Drawing Title: **TYPICAL DETAILS**

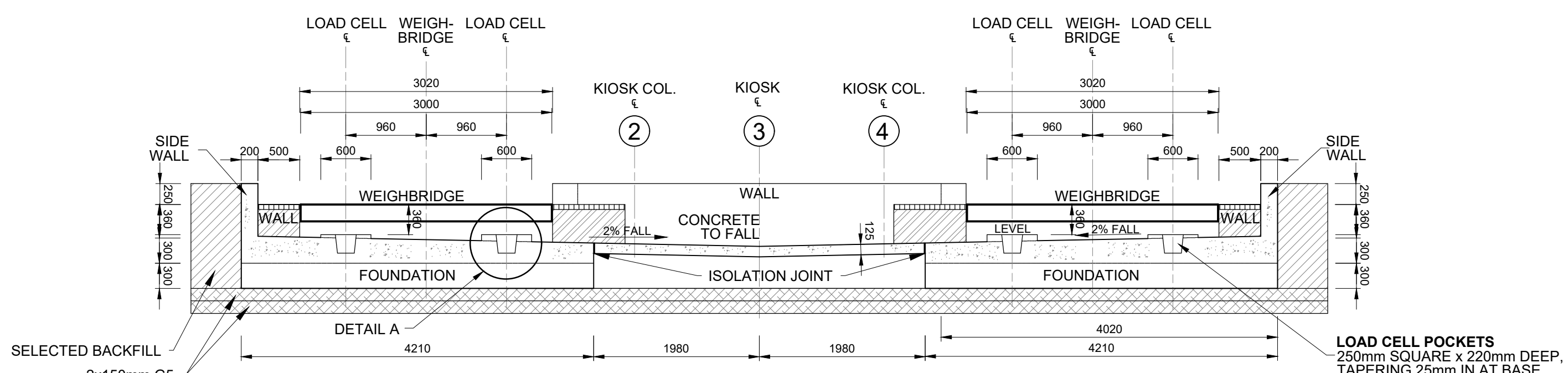
Scales	Reference
AS SHOWN	Date: JULY 2022
Designed: J. BOHLER / P. ARMUJAM	Drawn by: L. DU PLESSIS
Checked: M. RICHMOND	
Drawing No: 301837-08-C-DT-101-002	Revision: 0




PLAN OF WEIGHBRIDGE - CONCRETE
SCALE 1 : 50




SECTION A-A THROUGH WEIGHBRIDGE CONCRETE AT OUTER LOAD CELL POCKET
SCALE 1 : 50



TYPICAL SECTION B-B THROUGH WEIGHBRIDGE
SCALE 1 : 50



eThekweni Municipality
CLEANSING & SOLID WASTE



DSW

REDUCED PLAN USE SCALE BELOW

010203040506070

70mm ON ORIGINAL PLAN

Design Consultants

ix / Wilson & Pass Inc JV

ixengineers

Wilson & Pass Inc

02022/10/19

FOR TENDER

Revision

Date

Description

NOTE: No construction work to commence until land and servitude acquisitions have been completed

Acquisitions completed

DATE

SIGNATURE

UNDERGROUND SERVICES CHECKED

DATE

SIGNATURE

S.W. DRAINS

SEWERS

WATER MAINS

S.P.O. CABLES

ELECTRIC CABLES

S.A.R. CABLES

E.S.C. CABLES

OIL PIPE LINE

NOTE:

Only underground services affected by new construction work are shown. Care must be taken during excavations for road foundations, trenches etc. to avoid damage to underground services such as sewers, drains, cables, water mains and connections. Whenever possible these must be located before work proceeds.

DATE

SIGNATURE

L. Moodley

Deputy Head: Cleansing & Solid Waste - DSW

PSC 2015/010

Contract No.

FOR TENDER

Project Title

WESTERN WASTE MANAGEMENT FACILITY (SHONGWENI) CONTRACT A

Drawing Title

WEIGHBRIDGE DETAILS

Scales

AS SHOWN

Reference

DATE

OCTOBER 2022

Designed

J. BOKLER / P. ARMUGAM

Checked

M. RICHMOND

Drawn by

L. DU PLESSIS

Drawing No

301837-08-C-DT-102-001

Revision

0