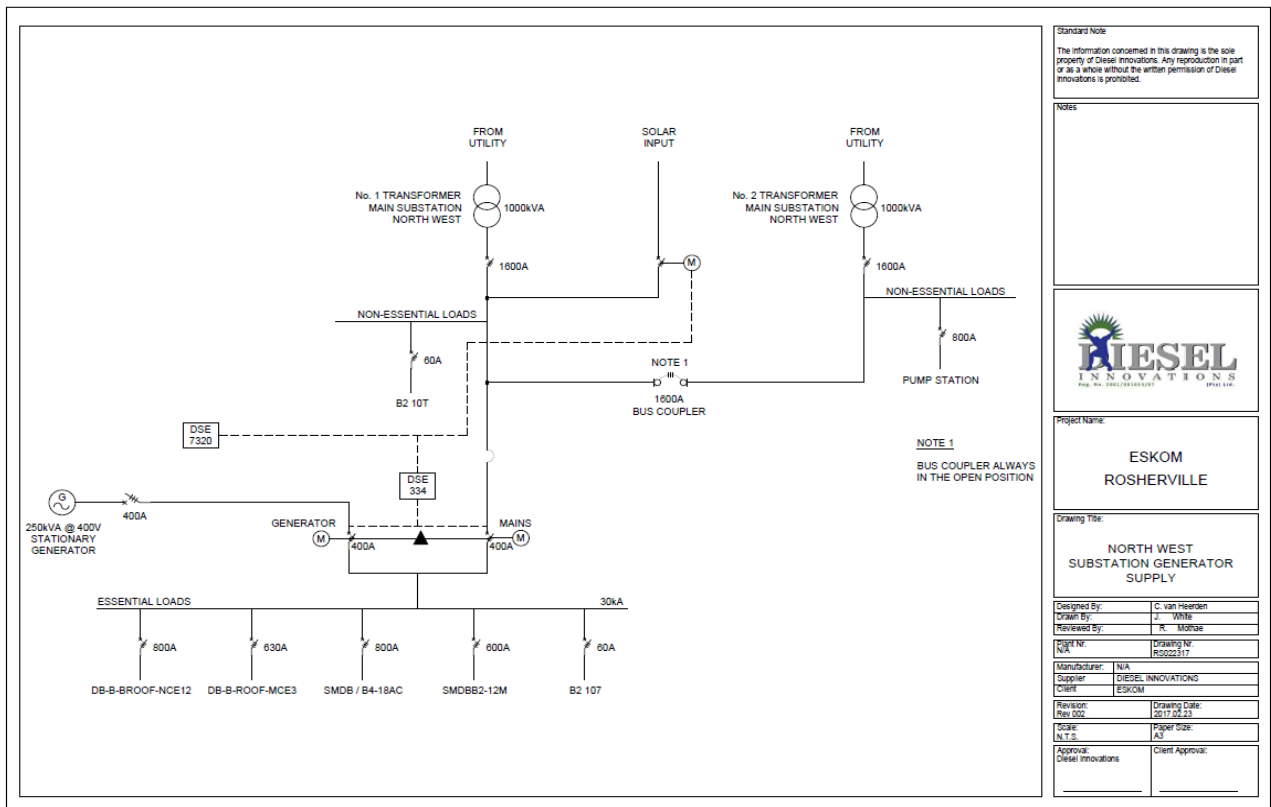


## RHF Bulk Power Supply Assessment

To be within the green energy ring it was planned that this supply would come from Northwest Sub – Essential loads

### 1. Reticulation



**Figure 1 : Single line Diagram for the NW Substation (Current Infrastructure)**

2. Switchgear General Arrangement (Situating where Figure 2 says other panels)



Figure 2 : GA , The intended bulk supply is in tier 4 (Bottom Left Tier)

3. Exploded view of the intended bulk supply (Figures 4a , 4b and 4c)



*Figure 3 a : Funtional Unit for Retrofitting MCCB for RHF Plant*



*Figure 3 b: Opened Functional Unit showing chassis plate for mounting MCCB*

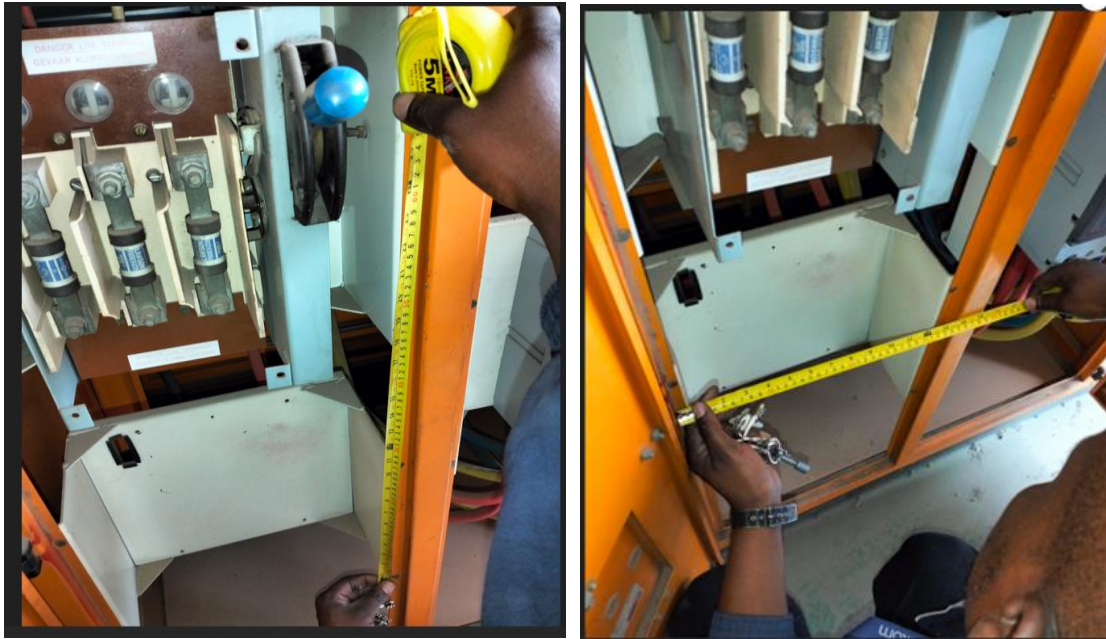


Figure 3 c: Intended spare unequipped functional unit.

#### 4. Busbar connections arrangements



Figure 4: Main Busbar Arrangements

NB : If more clarity is required , proper process to be followed to seek this as per Tender invitation.