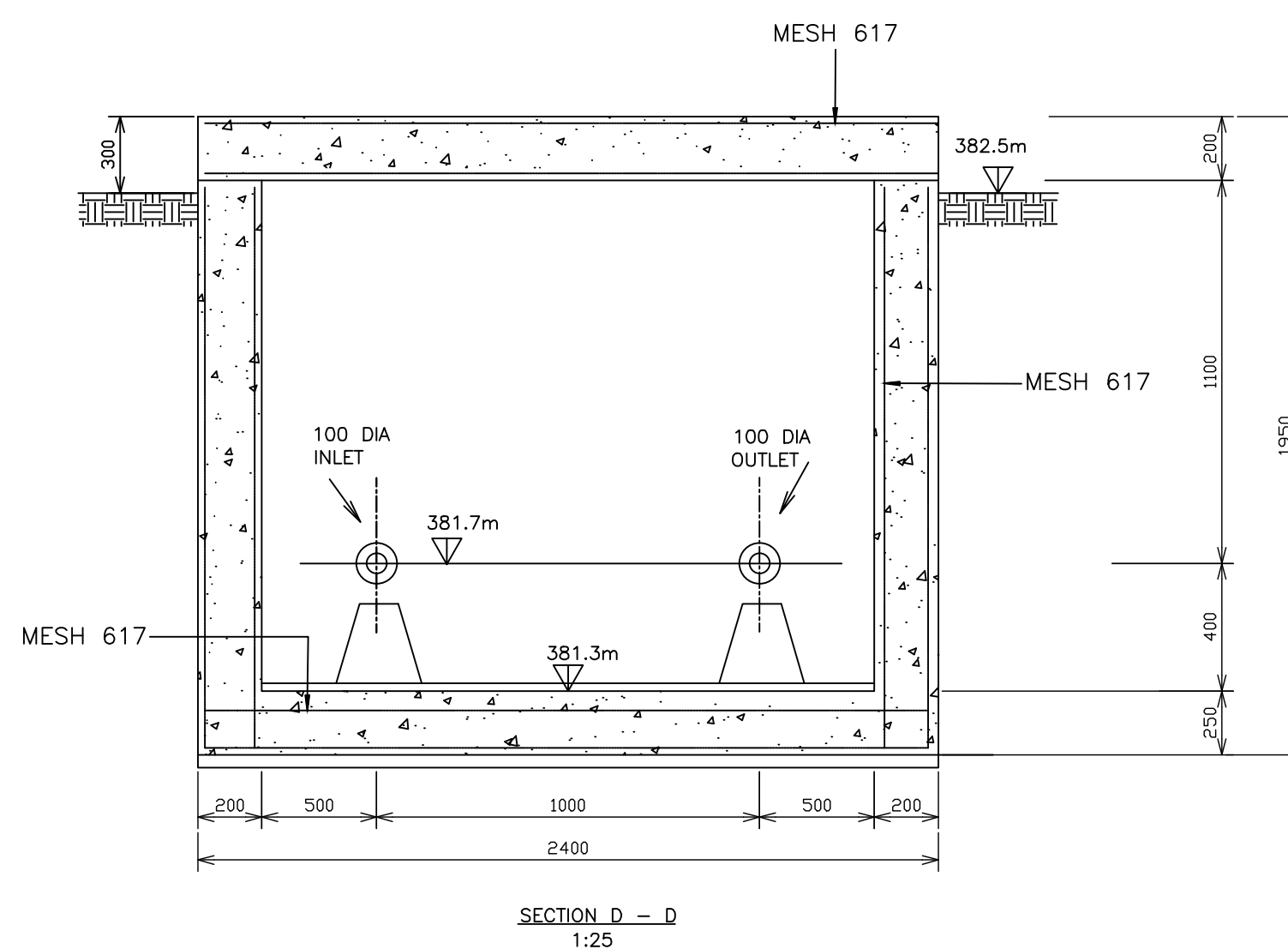
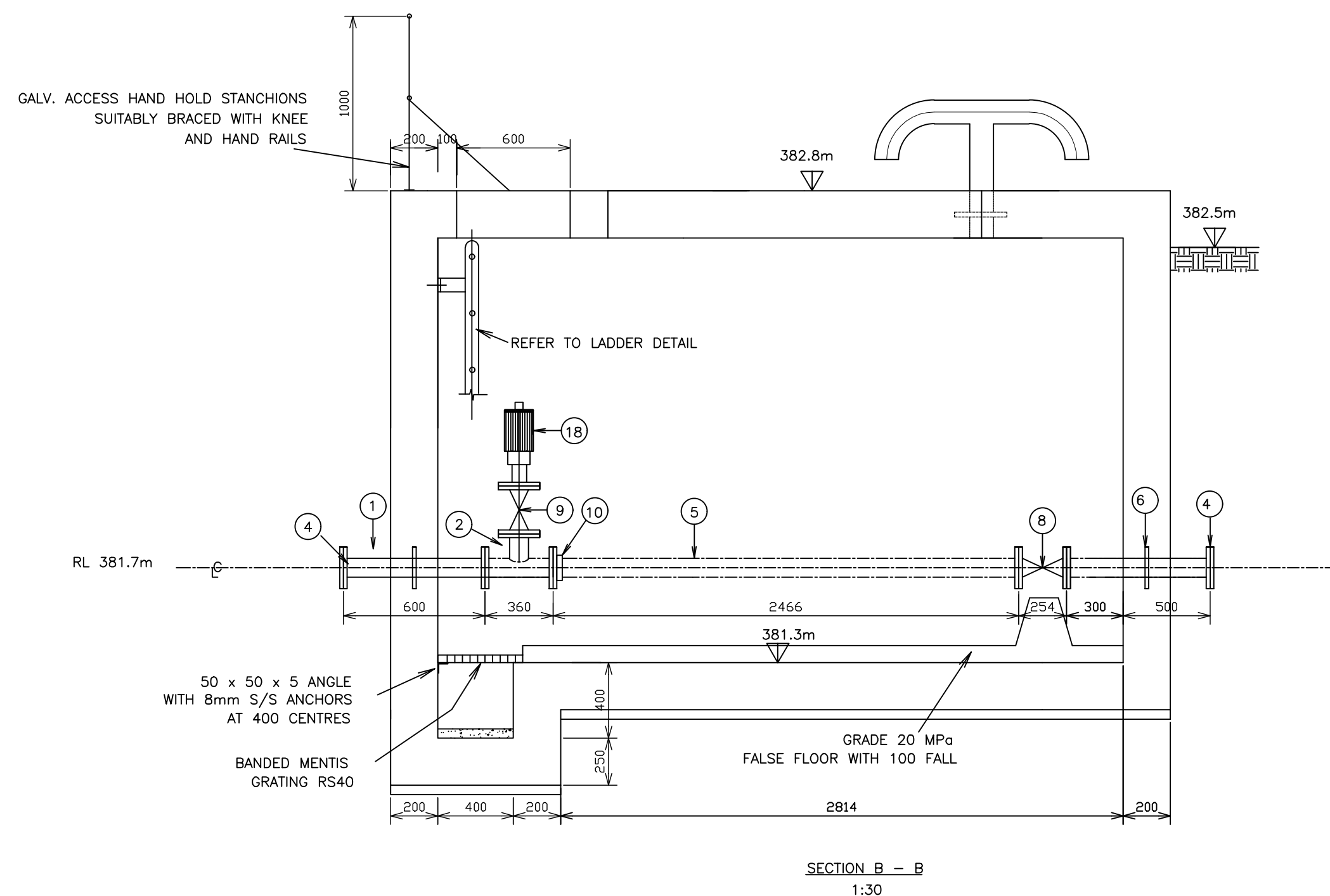
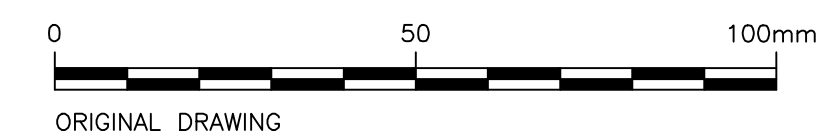


NOTE :
STRINGERS AND BRACKETS
TO BE 10 x 65 WITH 25 DIA.
MILD STEEL RUNGS
RUNGS ARE TO PASS THROUGH
STRINGERS AND ARE TO BE
WELDED TO STRINGERS
BOTH SIDES



SCHEDULE OF FITTINGS		
ITEM	DESCRIPTION	No. OF
1	100 Ø x 600mm LONG D/FL STAINLESS STEEL PIPE WITH CENTRAL PUDDLE	2
2	100 x 550 Ø STAINLESS STEEL ALL FLANGE TEE	2
3	100 x 100 Ø STAINLESS STEEL ALL FLANGE TEE	2
4	100 Ø BLANK FLANGE	4
5	100 Ø STAINLESS STEEL PIPE, FLANGED ONE SIDE, 2000mm LONG CUT TO SUIT ON SITE	1
6	100 Ø x 620mm LONG D/FL STAINLESS STEEL PIPE WITH CENTRAL PUDDLE	1
7	100 Ø STAINLESS STEEL PIPE, FLANGED BOTH ENDS (220mm LONG)	1
8	100 Ø ISOLATING VALVE WITH HANDWHEEL	2
9	50 Ø ISOLATING VALVE WITH HANDWHEEL	3
10	100 Ø VIKING JOHNSON COUPLING	2
11	100x50 Ø STAINLESS STEEL REDUCER, FLANGED BOTH ENDS (180 mm LONG)	2
12	50 Ø CAST IRON METER S&L WPD0150 T16 (250mm LONG)	1
13	100 x 100 Ø TEE, BARREL PE 900mm LONG CUT TO SUIT ON SITE	1
14	50 Ø VIKING JOHNSON COUPLING	1
15	50 Ø STAINLESS STEEL PIPE, FLANGED ONE END 900mm LONG CUT TO SUIT ON SITE	1
16	50 Ø CAST IRON TYPE Y-STRAINER FULL BORE ON T16 FLANGE(250mm LONG)	1
17	100 Ø STAINLESS STEEL PIPE, FLANGED BOTH ENDS (360mm LONG)	1
18	25 Ø VENT O MAT AIR VALVE	2
19	100 Ø x 800mm LONG D/FL STAINLESS STEEL PIPE WITH CENTRAL PUDDLE	1

NOTE
CONTRACTOR TO CONFIRM DIMENSIONS OF FITTINGS
WITH SUPPLIER TO ENSURE THEY FIT IN THE VALVE CHAMBER



DRAWING STATUS
ISSUED FOR TENDER

ORIGINAL SCALE
AS SHOWN ON A1

ALT. DWG. No. CONTRACT No.
SHT. No. OF PROJECT No.
J154

DRAWING No. J154-D04

REVISION
0

No.	PROJECT PLAN
1	P01 - PROJECT PLAN

ISSUED FOR TENDER	DATE	GM	SM
0	02/23	GM	SM

DESIGNED	B. MLALAZI
CHECKED	G. MLAMBO
DRAWN	B. MLALAZI
CHECKED	G. MLAMBO
PROJ. ENG.	S. MGUTSHINI

ZIYANDA consulting

TEL: (033) 346 0689
FAX: (033) 346 0692
E-mail: ziyanda@ziyandiconsulting.co.za

PO BOX 809
HILTON
PIETERMARITZBURG
3245

APPROVED :
S. MGUTSHINI
(PR ENG REG. No. 20040208)

CLIENT:

MHLATHUZE WATER

APPROVED :

IMPLEMENTING AGENT:

MHLATHUZE WATER

APPROVED :

PROJECT/DRAWING TITLE
MHLATHUZE WATER

WATER INTERVENTIONS FOR HOT SPOT AREAS
UMHLABUYALINGANA MUNICIPALITY

CONSTRUCTION OF 50 KL PREFABRICATED ELEVATED STEEL
RESERVOIRS, RETICULATION PIPELINES AND DRILLING, EQUIPPING AND
COMMISSIONING OF BOREHOLES AT EZINQENI AND THUNGWINI
SUBWARDS UNDER THE UMHLABUYALINGANA MUNICIPALITY
INLET AND OUTLET CHAMBER DETAILS