

ANNEXURE "B" - STATIONS CURRENT AND VANDALISED PICTURES

Redan.



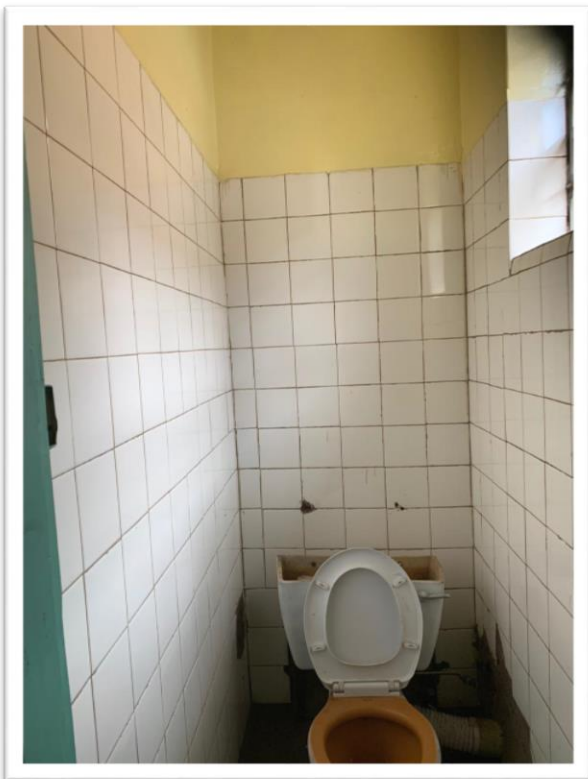
Physical deterioration of building due to vandalism and aging.



Uneven plaster and aging walls.



Damaged ceilings.



Missing cistern cover.



Functional obsolescence.



Burned building.



- Toilet block.



Burned building.



- Commuters waiting shelters.



Vandalized and burned shelters.



- Tuck shop.



Kookrus.





Vandalized Shelters.



Meyerton.



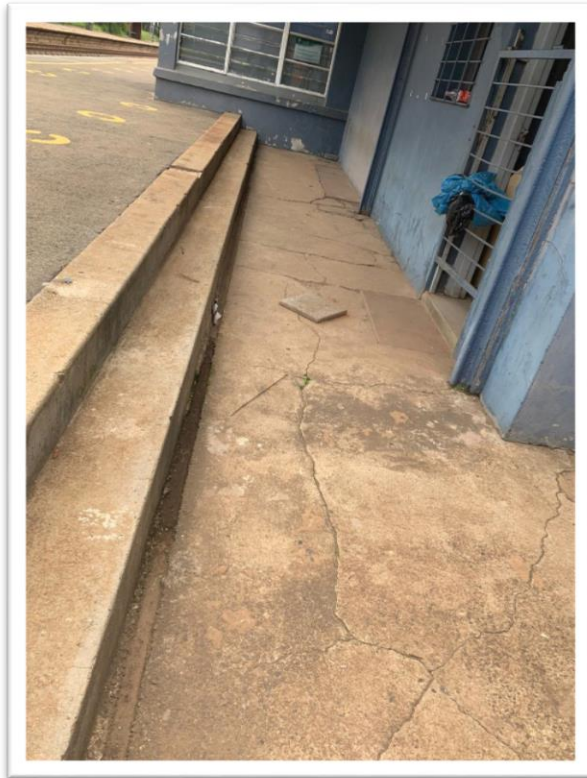
Aging paint on walls.



- **Unmarked building.**



Physical deterioration of building due to aging, storm damage, and vandalism.

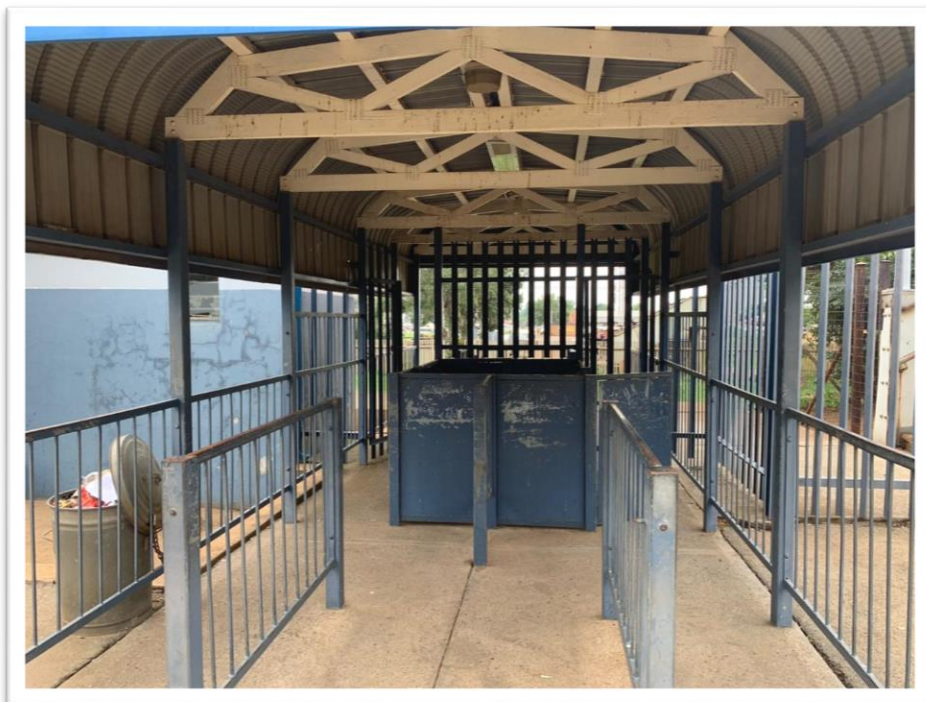


Physical deterioration of building.



Vandalized electrical fittings.

- Commuters' gates.



Aging paint on steel.

- Toilet block.

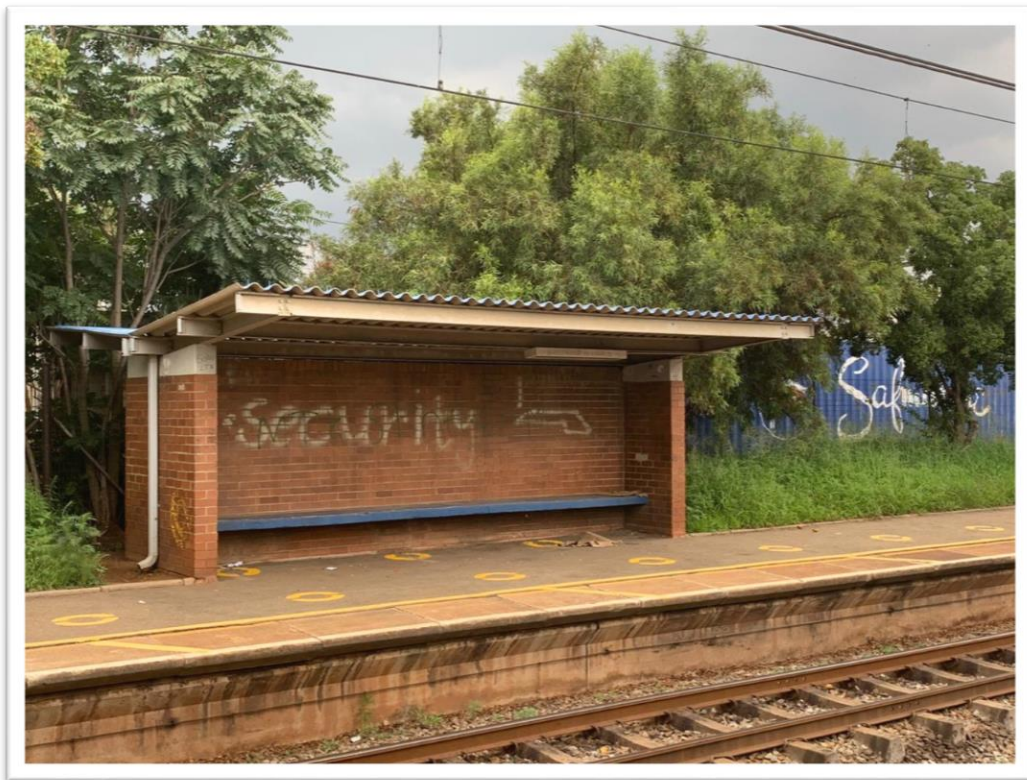


Vandalized Toilets.

- Commuters waiting shelters.



Paint peeling off walls.



Graffiti on walls.

Union



Rust spots on steel.



Broken window panes, and aging fascia boards.

- Toilet block.



Leaking toilet pipes.



The toilet blocks were locked on arrival, and it appears that they were recently renovated.

- Commuters waiting shelters.



Partly burned shelters.



Graffiti on walls.



The shelters are in a fairly good condition.

