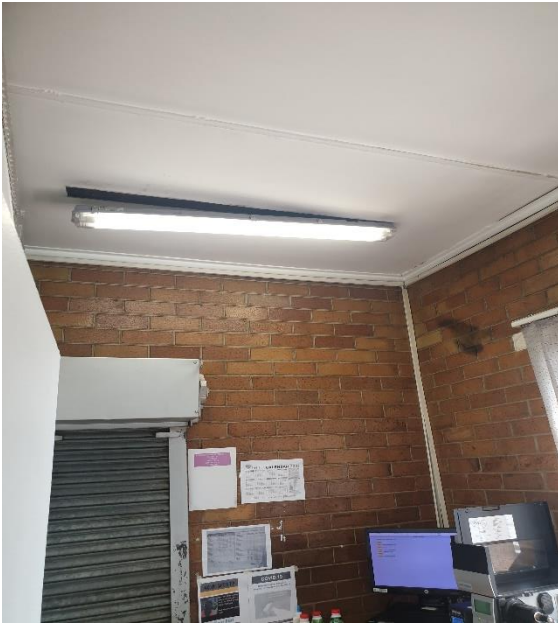




ANNEXURE A: PICTORIALS ISANDO



Pic 1. Ticket Booth Area



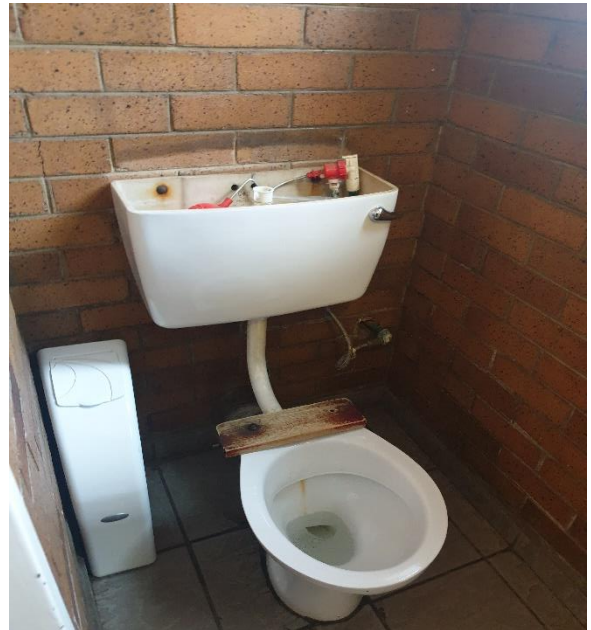
Pic 2. Ticket Office Server Area



Pic 3. Drainage from Ticket office Area



Pic 4. Ticket Office Kitchen Area



Pic 5. Kitchen Area Geyser



Pic 6. Ticket Office Staff Ablution



Figure S01: Platform Entrance Facility 01 – Poor maintenance of steel members and ageing of the facility but structurally sound. No structural defects observed.

Figure S02: Entrance Facility 02 – Structure appears stable but aluminium sheeting have minor rust and sagging.



Figure S13: Platform Shelters – white rust as surface zinc observed on aluminium roof sheeting



Figure S14: Platform Shelters - structurally sound



Figure S15: Bridges - fire damages on steel members and precast concrete slabs

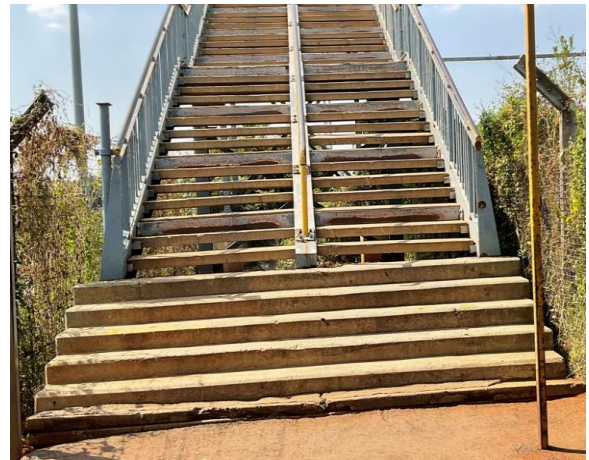


Figure S16: Bridge stairs – precast concrete members have cracks



Figure S13: Platform Shelters – white rust as surface zink observed on aluminium roof sheeting



Figure S14: Platform Shelters - structurally sound



Figure S19: Bridges Supports – Cracked concrete plinths



Figure S20: Bridges column supports – Concrete plinths and steel columns are structurally sound

ANNEXURE A: PICTORIALS Tembisa



Vandalised Benches



Rusted members and gutters on shelter



Damaged Polycarbonate Sheeting



Cumbersome TVP



Rusted Pedestrian Bridge

