



TENDER DOCUMENT

FOR

**The Maintenance of Alpha Passenger Loading
Bridges for a period of 6 months at the O.R Tambo
International Airport**

Tender Reference Number: ORT 69690

August 2022

Issued by
Airports Company South Africa
O. R. Tambo International Airport

Note:

Upon Acceptance of the Offer by the Employer, this Tender Document becomes the Contract Document, subsequent to which, all references to the term "Tenderer(s)" then become synonymous with the term "Contractor".

VOLUME 1

NAME OF TENDERER:



Contents	
The Contract	
Part C1: Agreement and Contract Data	
C1.1	Form of Offer and Acceptance
C1.2	Contract Data
C1.3	Occupational Health and Safety Agreement
C1.4	Forms of Securities
C1.5	Insurance Schedule
Part C2: Pricing data	
C2.1	Pricing Assumptions
C2.2	Price List
Part C3: Service Information	
Part C4: Site information	

C1.1 Form of Offer and Acceptance

Offer

The employer, identified in the acceptance signature block, wishes to enter into a contract for the

MAINTENANCE OF ALPHA APRON PASSENGER LOADING BRIDGES

The Contractor, identified in the offer signature block, has examined this document and addenda hereto as listed in the schedules, and by submitting this offer has accepted the conditions thereof.

By the representative of the Contractor, deemed to be duly authorised, signing this part of this form of offer and acceptance, the Contractor offers to perform all the obligations and liabilities of the Contractor under the contract including compliance with all its terms and conditions according to their true intent and meaning for an amount to be determined in accordance with the Conditions of Contract identified in the Contract Data.

The offered total of the Prices exclusive of VAT is	
Value Added Tax @ 15% is	
The total offered amount due inclusive of VAT is	
(in words)	

(The above amount should be calculated as per the guide provided in the Pricing Data [Subtotal F]. In the event of any conflict between the amount above and the Pricing Data [Subtotal F], the former shall prevail.)

for the Contractor

Signature Date

Name Capacity

(Name and address of organisation)

Name and signature
 of witness signature

This offer may be accepted by the employer by signing the acceptance part of this form of offer and acceptance and returning one copy of this document to the Bidder before the end of the period of validity stated in the tender data, whereupon the Bidder becomes the party named as the Contractor in the conditions of contract identified in the contract data.



Acceptance

By signing this part of this form of offer and acceptance, the employer identified below accepts the Contractor's offer. In consideration thereof, the employer shall pay the Contractor the amount due in accordance with the conditions of contract identified in the contract data. Acceptance of the Contractor's offer shall form an agreement between the employer and the Contractor upon the terms and conditions contained in this agreement and in the contract that is the subject of this agreement.

The terms of the contract, are contained in:

- Part C1: Agreements and contract data, (which includes this agreement)
 - Part C2: Pricing data and Price List
 - Part C3: Service information.
 - Part C4: Site information
- and schedules, drawings and documents or parts thereof where so indicated.

Deviations from and amendments to the documents listed in the tender data and any addenda thereto as listed in the tender schedules as well as any changes to the terms of the offer agreed by the Bidder and the employer during this process of offer and acceptance, are contained in the schedule of deviations attached to and forming part of this agreement. No amendments to or deviations from said documents are valid unless contained in this schedule.

The Contractor shall within two weeks after receiving a completed copy of this agreement, including the schedule of deviations (if any), contact the employer's agent (whose details are given in the contract data) to arrange the delivery of any bonds, guarantees, proof of insurance and any other documentation to be provided in terms of the conditions of contract identified in the contract data. Failure to fulfil any of these obligations in accordance with those terms shall constitute a repudiation of this agreement.

Notwithstanding anything contained herein, this agreement comes into effect on the date when the Bidder receives one fully completed original copy of this document, including the schedule of deviations (if any). Unless the Bidder (now Contractor) within five working days of the date of such receipt notifies the employer in writing of any reason why he cannot accept the contents of this agreement, this agreement shall constitute a binding contract between the parties.

for the Employer

Signature Date

Name Capacity

**Airports Company South Africa,
3rd Floor ACSA North Wing Offices
O R Tambo International Airport
Kempton Park
1627**

Name of
witness signature



Schedule of Deviations

1 Subject
Details
.....
.....
.....
2 Subject
Details
.....
.....
.....
3 Subject
Details
.....
.....
.....
4 Subject
Details
.....
.....
.....
5 Subject
Details
.....
.....

By the duly authorised representatives signing this agreement, the employer and the Contractor agree to and accept the foregoing schedule of deviations as the only deviations from and amendments to the documents listed in the tender data and addenda thereto as listed in the tender schedules, as well as any confirmation, clarification or changes to the terms of the offer agreed by the Bidder and the employer during this process of offer and acceptance.

It is expressly agreed that no other matter whether in writing, oral communication or implied during the period between the issue of the tender documents and the receipt by the Bidder of a completed signed copy of this Agreement shall have any meaning or effect in the contract between the parties arising from this agreement.

C1.2 Contract Data

Precedence in interpretation of the contract:

In the event of any ambiguity, inconsistency or conflict between the General Conditions of Contract, Special Conditions, Pricing Data, Service information, or other, the order of precedence shall be as follows:

Firstly, the Service information (C3) and Annexes thereto shall prevail;

Secondly the Contract Data (C1.2) and Conditions of Contract;

Thirdly the General Conditions of Contract;

Fourthly the Pricing data;

Lastly any schedules, drawings and other documents included with this agreement.

General Conditions of Contract

The General Conditions of Contract comprise the NEC3 Term Service Contract, April 2013, published by the NEC, and the following “Particular Conditions”, which include amendments and additions to such General Conditions.

The following Particular Conditions amplify the General Conditions of Contract and highlight areas in that document that require specific attention.

Wherein in the contract it is stated no contract data is required accordingly the *conditions of contract* remain unaltered as per NEC3 Term Service Contract, April 2013.

C1.2a - Data provided by the *Employer*

Clause	Statement	Data
1	General	
	The <i>conditions of contract</i> are the core clauses and the clauses for main Option:	
	dispute resolution Option:	A: Priced contract with price list W1: Dispute resolution procedure X1: Price Adjustment for inflation
	and secondary Options:	X2: Changes in the law X17: Low service damages X18: Limitation of Liability (as amended in Option Z) X19: Task Order X20: Key performance indicators Z: Additional conditions of contract
	of the NEC3 Term Service Contract (April 2013)	
10.1	The <i>Employer</i> is:	Airports Company South Africa SOC Limited (ACSA), Registration No 1993/004149/30, VAT no 4930138393, a juristic person incorporated in terms of the company laws of the Republic of South Africa
	Address	O. R. Tambo International Airport Private Bag X1 3rd Floor ACSA North Wing Offices OR Tambo International Airport 1627
	Tel No.	011 921 6911
10.1	The <i>Service Manager</i> is:	TBA
	Address	
	Tel No.	
	e-mail	
11.2(2)	The <i>Affected Property</i> is	O. R. Tambo International Airport

11.2(13)	The <i>service</i> is	The Maintenance of alpha apron passenger loading bridges, as more fully set out in section C3 <i>Service Information</i> .
11.2(14)	The following matters will be included in the Risk Register	<p>1 Risk of financial loss and/or injury of 3rd parties due to the proximity of the <i>service</i> (or of persons providing the <i>service</i>) to all airport users</p> <p>2 Risk of injury to contract personnel and all airport users due to lifting/moving of heavy objects</p> <p>3 Work in confined spaces</p> <p>4 Work with flammable and toxic gases</p> <p>5 Refer to Annexure E for more risks</p>
11.2(15)	The <i>Service Information</i> is in	Part C3: Employer's Service Information and all documents and drawings and other specifications to which it makes reference
12.2	The <i>law of the contract</i> is the law of	the Republic of South Africa
13.1	The <i>language of this contract</i> is	English
13.3	The <i>period for reply</i> is	3 working days
2	The Contractor's main responsibilities	Detailed in Part C3 (Service Information)
21.1	The <i>Contractor</i> submits a first plan for acceptance within	8 weeks of the Contract Date
3	Time	
30.1	The <i>starting date</i> is	Upon signing of the contract by ACSA
30.2	The <i>Service Period</i> is	Six (6) Months after signing of the contract by ACSA or when the amount in the Form of Offer has been expended, whichever occurs first
4	Testing and Defects	No data is required for this section of the <i>conditions of contract</i>
5	Payment	
50.1	The <i>assessment interval</i> is on the	between the 1 st and 15 th day of each successive month.
51.1	The <i>currency of this contract</i> is the	South African Rand (ZAR)
51.2	The period within which payments are made is	30 days

51.4	The <i>interest rate</i> is	<p>(i) 0.00 percent above the publicly quoted prime rate of interest charged by Nedbank Bank for amounts due in Rands and</p> <p>(ii) the LIBOR rate applicable at the time for amounts due in other currencies</p>
6	Compensation events	No data is required for this section of the <i>conditions of contract</i> .
7	Use of Equipment Plant and Materials	No data is required for this section of the <i>conditions of contract</i> .
8	Risks and insurance	
83.1	The <i>Employer</i> provides these insurances from the Insurance Table	<p>(i) Insurance against loss of or damage to the <i>services</i>, Plant and Materials comprising Contract Works Insurance, SASRIA Special Risks Insurance and Marine & Air Cargo insurance; and</p> <p>(ii) Insurance (Public Liability Insurance) against liability for loss or damage to property (except the <i>services</i>, Plant and Materials and Equipment) and liability for bodily injury to or death of a person (not an employee of the <i>Contractor</i>) caused by activity in connection with the contract;</p> <p>Note: The terms and other matters applicable to these insurances provided by the Employer (and to insurances generally) are detailed in the insurance schedule attached as section C1.5 to the <i>contract</i> ("the Insurance Schedule").</p>
83.1	The <i>Contractor</i> provides these additional insurances	<p>Professional Indemnity Insurance</p> <p>Note: The terms and other matters applicable to this insurance provided by the Employer are likewise detailed in section C1.5 to the <i>contract</i>.</p>
83.2	The minimum amounts of cover or minimum limits of indemnity required for the insurance table	Refer to section C1.5 Insurance Schedule
83.1	The <i>Employer</i> provides these insurances from the Insurance Table	Refer to section C1.5 Insurance Schedule
83.1	The <i>Employer</i> provides these additional insurances	Refer to section C1.5 Insurance Schedule
83.1	The minimum amount of cover for insurance against loss and damage caused by the <i>Contractor</i> to the <i>Employer's</i> property is	Refer to section C1.5 Insurance Schedule

83.1	The minimum amount of cover for loss of or damage to Plant and Materials provided by the <i>Employer</i> is:	Refer to section C1.5 Insurance Schedule
83.1	The minimum amount of cover for insurance in respect of loss of or damage to property (except the <i>Employer's</i> property, Plant and Materials and Equipment) and liability for bodily injury to or death of a person (not an employee of the <i>Contractor</i>) arising from or in connection with the <i>Contractor's</i> Providing the Service for any one event is:	Refer to section C1.5 Insurance Schedule
83.1	The minimum limit of indemnity for insurance in respect of death of or bodily injury to employees of the <i>Contractor</i> arising out of and in the course of their employment in connection with this contract for any one event is:	As prescribed by the Compensation for Occupational Injuries and Diseases Act No. 130 of 1993 and the <i>Contractor's</i> common law liability for people falling outside the scope of the Act with a limit of Indemnity of not less than R [•] ([•] Rands)
9	Termination	There is no reference to Contract Data in this section of the core clauses and terms in italics used in this section are identified elsewhere in this Contract Data.
10	Data for main Option clause	
A	Priced contract with price list	
20.5	The <i>Contractor</i> prepares forecasts of the final total of the Prices for the whole of the <i>service</i> at intervals no longer than	4 weeks.

11 Data for Option W1

W1.1	The <i>Adjudicator</i> is	The person appointed jointly by the parties from the list of adjudicators contained below
------	---------------------------	--

Name	Location	Contact details (phone & e mail)
Adv. Ghandi Badela	Gauteng	+27 11 282 3700 ghandi@badela.co.za
Mr. Errol Tate Pr. Eng.	Durban	+27 11 262 4001 Errol.tate@mweb.co.za
Adv. Saleem Ebrahim	Gauteng	+27 11 535-1800 salimebrahim@mweb.co.za
Mr. Sebe Msutwana Pr. Eng.	Gauteng	+27 11 442 8555 sebe@civilprojects.co.za
Mr. Sam Amod	Gauteng	sam@samamod.com

	Adv. Sias Ryneke SC	Gauteng	083 653 2281 reyneke@duma.nokwe.co.za
	Mr. Emeka Ogbugo (Quantity Surveyor)	Pretoria	+27 12 349 2027 emeka@gosiame.co.za
W1.2(3)	The <i>Adjudicator nominating body</i> is:	the Chairman of ICE-SA a joint Division of the South African Institution of Civil Engineering and the Institution of Civil Engineers (London) (see www.ice-sa.org.za) or its successor body	
W1.4(2)	The <i>tribunal</i> is:	arbitration	
W1.4(5)	The <i>arbitration procedure</i> is	the latest edition of Rules for the Conduct of Arbitrations published by The Association of Arbitrators (Southern Africa) or its successor body	
	The place where arbitration is to be held is	Johannesburg, South Africa	
	The person or organization who will choose an arbitrator	the Chairman for the time being or his nominee of the Association of Arbitrators (Southern Africa) or its successor body	
12	Data for secondary Option		
X1	Price Adjustment for inflation	The index referred to in this clause shall be deemed to refer to the CPI index on the <i>starting date</i> . Price adjustment for inflation shall only take place on contract anniversary	
X2	Changes in the law	No data is required for this secondary Option	
X17	Low service damages	As per the Service Information (C3) – Annex I section 6	
X17.1	The <i>service level table</i> is in	The Service Information, Annex I	
X18	Limitation of liability		
X18.1	The <i>Contractor's</i> liability to the <i>Employer</i> for indirect or consequential loss is limited to	Nil - Neither Party is liable to the other for any consequential or indirect loss, including but not limited to loss of profit, loss of income or loss of revenue	
X18.2	For any one event, the <i>Contractor's</i> liability to the <i>Employer</i> for loss of or damage to the <i>Employer's</i> property is limited to	The total of the Prices	
X18.3	The <i>Contractor's</i> liability for Defects due to his design of an item of Equipment is limited to	The total of the Prices	
X18.4	The <i>Contractor's</i> total liability to the <i>Employer</i> , for all matters arising under	The Contractor's total direct liability to the Employer for all matters arising under or	



or in connection with this contract, other than the excluded matters, is limited to

connection with this contract, other than the excluded matters, is limited to the total of the Prices and applies in contract, tort or delict and otherwise to the extent allowed under the law of the contract.

The excluded matters are amounts payable by the Contractor as stated in this contract for:

- **Loss of or damage to the Employer's property,**
 - **Defects liability,**
 - **Insurance liability to the extent of the Contractor's risks**
 - **death of or injury to a person;**
- infringement of an intellectual property right**

X18.5	The <i>end of liability date</i> is	52 weeks after the end of the service period.
X19	Task Order	
X19.5	The <i>Contractor</i> submits a Task Order programme to the <i>Service Manager</i> within	5 days of receiving the Task Order
X 20.1	The incentive schedule for Key Performance Indicators is in	- As per the Service Information (C3) – Annex I section 7 – N/A

Z(A): The Additional conditions of contract are: Z1-Z19

Amendments to the Core Clauses	
Z1	Interpretation of the law
Z1.1	Add to core clause 12.3: Any extension, concession, waiver, non-enforcement of any terms of the contract or relaxation of any action stated in this contract by the Parties, the <i>Service Manager</i> , the, or the <i>Adjudicator</i> does not constitute a waiver of rights, and does not give rise to an estoppel unless the Parties agree otherwise and confirm such agreement in writing.
Z2	Providing the Service: Delete core clause 20.1 and replace with the following:
Z2.1	The <i>Contractor</i> provides the <i>service</i> in accordance with the <i>Service Information</i> and warrants that the results of the <i>service</i> , when complete, shall be fit for their intended purpose.
Z3.	Other responsibilities: add the following at the end of core clause 27:
Z3.1	The <i>Contractor</i> shall have satisfied himself, prior to the <i>starting date</i> , as to the completeness, sufficiency and accuracy of all information and drawings provided to him as at the <i>starting date</i> .
Z3.2	The <i>Contractor</i> shall be responsible for the correct setting out or carrying out of the <i>service</i> in accordance with the original points, lines and levels stated in the <i>Service Information</i> or notified by the <i>Service Manager</i> . Any errors in the setting or carrying out of the <i>service</i> shall be rectified by the <i>Contractor</i> at the <i>Contractor's</i> own costs.
Z4.	Termination
Z4.1	Add the following to core clause 91.1, at the second main bullet, fourth sub-bullet point, after the words “assets or”: “business rescue proceedings are initiated or steps are taken to initiate business rescue proceedings”.
Z5.	Ambiguities and inconsistencies: Delete core clause 17 and replace with the following:
Z5.1	If there is any ambiguity or inconsistency in or between the documents which are part of this contract, the priority of the documents is in accordance with the following sequence: <ul style="list-style-type: none"> • The additional conditions of contract under these Z clauses • The conditions of contract and • The other documents.
Z5.2	The <i>Service Manager</i> or the <i>Contractor</i> notifies the other as soon as either becomes aware of any such ambiguity or inconsistency in or between the documents which are part of this contract. The <i>Service Manager</i> gives an instruction resolving the ambiguity or inconsistency. Notwithstanding any other provision of this contract, any such ambiguity, inconsistency and/or instruction does not automatically result in any increase to the Price List or any delay to the end of the service period.
Z6.	Payment: Add the following at the end of core clause 51:
51.5	The Employer does not pay interest to the Contractor on a late payment resulting from the Contractor's failure to provide the Employer with a correctly rendered VAT invoice within the period stated in clause 51.1 above.

51.5 The Employer is entitled to deduct from or set off against any money due to the Contractor

- any sum due to the Employer from the Contractor or
- any amount for which the Contractor is liable to pay to the Employer (whether liquidated or otherwise) arising under this contract.

Amendment to the Secondary Option Clauses

Z7. Changes in Law: Add the following clause to secondary option X2 as X2.2:

Z7.1 A change in law is defined as:

Z7.1.1 the adoption, enactment, promulgation, coming into effect, repeal, amendment, reinterpretation, change in application or other modification after the starting date of any law, excluding (i) the promulgation of any bill, unless such bill is enacted into the *law of the country*, and (ii) any such modification in law relating to any taxes, charges, imposts, duties, levies or deductions that are assessed in relation to a person's income;

Z7.1.2 any permit being terminated, withdrawn, amended, modified or replaced, other than (i) in accordance with the terms upon which it was originally granted, (ii) as a result of the failure by the *Contractor* to comply with any condition set out therein, or (iii) as a result of any act or omission of the *Contractor*, any Subcontractor or any affiliate to the *Contractor*.

Z8. Performance Bond: The following amendments are made to clause X13:

Z8.1. Amend the first sentence of clause X13.1 to read as follows: The *Contractor* gives the *Employer* an unconditional, on-demand performance bond, provided by a bank or insurer which the *Service Manager* has accepted in his or her discretion, for the amount stated in the Contract Data and in the form set out in Section C1.4 of this Contract Data.

Z8.2. Add the following new clause as Option X13.2: The *Contractor ensures* that the performance bond is valid and enforceable until the end of the *service period*. If the terms of the performance bond specify its expiry date and the end of the *service period* does not coincide with such expiry date, four weeks prior to the said expiry date, the *Contractor extends* the validity of the performance bond until the end of the *service period*. If the *Contractor fails* to so extend the validity of the performance bond, the *Employer may claim* the full amount of the performance bond and retain the proceeds as cash security

Z9. Limitation of liability: Insert the following new clause as Option X18.6:

Z8.1 The *Employer's liability* to the *Contractor* for the *Contractor's* indirect or consequential loss or damage of any kind is limited to R0.00.

Z8.2 Notwithstanding any other clause in this contract, any proceeds received from any insurances or any proceeds which would have been received from any insurances but for the conduct of the *Contractor* shall be excluded from the calculation of the limitations of liability listed in the contract.

Additional Z Clauses

Z10. Cession, delegation and assignment

Z10.1. The *Contractor* shall not cede, delegate or assign any of its rights or obligations to any person without the written consent of the *Employer*, which consent shall not be unreasonably withheld. This clause shall be binding on the liquidator/business rescue practitioner /trustee (whether provisional or final) of the *Contractor*.

- Z10.2.** The *Employer* may, on written notice to the *Contractor*, cede and delegate its rights and obligations under this contract to any person or entity.
- Z11. Joint and several liability**
- Z11.1.** If the *Contractor* constitutes a joint venture, consortium or other unincorporated grouping of two or more persons, these persons are deemed to be jointly and severally liable to the *Employer* for the performance of this Contract.
- Z11.2.** The *Contractor* shall, within 1 week of the starting date, notify the *Service Manager* and the *Employer* of the key person who has the authority to bind the *Contractor* on its behalf.
- Z11.3.** The *Contractor* does not materially alter the composition of the joint venture, consortium or other unincorporated grouping of two or more persons without prior written consent of the *Employer*.
- Z12. Ethics**
- Z12.1.** The *Contractor* undertakes:
- Z12.1.1.** not to give any offer, payment, consideration, or benefit of any kind, which constitutes or could be construed as an illegal or corrupt practice, either directly or indirectly, as an inducement or reward for the award or in execution of this contract;
- Z12.1.2.** to comply with all laws, regulations or policies relating to the prevention and combating of bribery, corruption and money laundering to which it or the *Employer* is subject, including but not limited to the Prevention and Combating of Corrupt Activities Act, 12 of 2004.
- Z12.2.** The *Contractor's* breach of this clause constitutes grounds for terminating the *Contractor's* obligation to provide the service in accordance with the procedures stated P2, P3 or P4 in core clause 92.2 or taking any other action as appropriate against the *Contractor* (including civil or criminal action). However, lawful inducements and rewards shall not constitute grounds for termination.
- Z12.3.** If the *Contractor* is found guilty by a competent court, administrative or regulatory body of participating in illegal or corrupt practices, including but not limited to the making of offers (directly or indirectly), payments, gifts, gratuities, commission or benefits of any kind, which are in any way whatsoever in connection with the contract with the *Employer*, the *Employer* shall be entitled to terminate the contract in accordance with the procedures stated in core clause 92.2, the amount due on termination is A1.
- Z13. Confidentiality**
- Z13.1.** All information obtained in terms of this contract or arising from the implementation of this contract shall be treated as confidential by the *Contractor* and shall not be used or divulged or published to any person not being a party to this contract, without the prior written consent of the *Service Manager*, whose consent shall not be unreasonably withheld.
- Z13.2.** If the *Contractor* is uncertain about whether any such information is confidential, it is to be regarded as such until otherwise notified by the *Service Manager*.
- Z13.3.** This undertaking shall not apply to –
- Z13.3.1.** information disclosed to the employees of the *Contractor* for the purposes of the implementation of this contract. The *Contractor* undertakes to ensure that its employees are aware of the confidential nature of the information so disclosed and that they comply with the provisions of this clause;
- Z13.3.2.** information which the *Contractor* is required by law to disclose, provided that the *Contractor* notifies the *Employer* prior to disclosure so as to enable the *Employer* to take the appropriate action to protect such information. The *Contractor* may disclose such information only to the extent required by law and shall use reasonable efforts to obtain assurances that confidential treatment will be afforded to the information so disclosed;

- Z13.3.3.** information which at the time of disclosure or thereafter, without default on the part of the *Contractor*, enters the public domain or to information which was already in the possession of the *Contractor* at the time of disclosure (evidenced by written records in existence at that time);
- Z13.4.** The taking of images (whether photographs, video footage or otherwise) of the *services* or *Affected Property* or any portion thereof, in the course of providing the *services* or at the end of the service period requires the prior written consent of the *Service Manager*. All rights in and to all such images vests exclusively in the *Employer*.
- Z13.5.** The *Contractor* ensures that all his Subcontractors abide by the undertakings in this clause.
- Z14. *Employer's Step-in rights***
- Z14.1.** If the *Contractor* defaults by failing to comply with its obligations in terms of this contract and fails to remedy such default within 4 weeks of the notification of the default by the *Service Manager*, the *Employer*, without prejudice to its other rights, powers and remedies under the contract, or at law may remedy the default either, itself or procure a third party (including any subcontractor or supplier of the *Contractor*) to do so on its behalf. The reasonable costs of the Employer exercising its step-in rights in respect of any subcontractor or supplier of the *Contractor* shall be borne by the *Contractor*.
- Z14.2.** The *Contractor* co-operates with the *Employer* and facilitates and permits the use of all required information, materials and other matter (including but not limited to documents and all other drawings, CAD materials, data, software, models, plans, designs, programs, diagrams, evaluations, materials, specifications, schedules, reports, calculations, manuals or other documents or recorded information (electronic or otherwise) which have been or are at any time prepared by or on behalf of the *Contractor* under the contract or otherwise for and/or in connection with the *works*) and generally does all things required by the *Service Manager* to achieve this end.
- Z15. *Liens and Encumbrances***
- Z15.1.** The *Contractor* keeps the Equipment used to provide the *service* free of all liens and other encumbrances at all times. The *Contractor*, vis-a-vis the *Employer*, waives all and any liens which he may from time to time have, or become entitled to over such Equipment and any part thereof and ensures that his Subcontractors similarly, vis-a-vis the *Employer*, waive all liens they may have or become entitled to over such Equipment from time to time
- Z16. *Intellectual Property***
- Z15.1** Intellectual Property ("IP") rights means all rights in and to any patent, design, copyright, trade mark, trade name, trade secret, other intellectual or industrial property rights, technical information and concepts, know-how, specifications, data, formulae, computer programs, memoranda, scripts, reports, manuals, diagrams, drawings, prototypes, drafts and any rights to them created during the performance of the service and include applications for and rights to obtain or use any such intellectual property whether under South African or foreign law.
- Z15.2** IP rights remain vested in the originator and shall not be used for any reason whatsoever other than carrying out the *service*.
- Z15.3** The *Contractor* gives the *Employer* an irrevocable, transferrable, non-exclusive, royalty free licence to use and copy all IP related to the *service* for the purposes of constructing, repairing, demolishing, operating and maintaining the *service* or *the Affected Property*.
- Z15.4** The written approval of the *Contractor* is to be obtained before the *Contractor's* IP made available to any third party which approval will not be unreasonably withheld or delayed. Prior to making any *Contractor's* IP available to any third party the *Employer* shall obtain a written confidentiality

undertaking from any such third party on terms no less onerous than the terms the *Employer* would use to protect its IP.

- Z15.5** The *Contractor* shall indemnify and hold the *Employer* harmless against and from any claim alleging an infringement of IP rights (“**the claim**”), which arises out of or in relation to:
- Z15.5.1** the *Contractor’s* service;
- Z15.5.2** the use of the *Contractor’s* Equipment, or
- Z15.5.3** the proper use of the *Affected Property* on which the service is provided.
- Z15.6** The *Employer* shall, at the request and cost of the *Contractor*, assist in contesting the claim and the *Contractor* may (at its cost) conduct negotiations for the settlement of the claim, and any litigation or arbitration which may arise from it.
- Z17. Dispute resolution: The following amendments are made to Option W1:**
- Z16.1 Under clause W1.3, in the fourth row of the first column of the adjudication table, the following words are added after the words “any other matter”:** “excluding disputes relating to termination of the contract”.
- Z16.2 The following clauses are added at the end of clause W1.3 as sub-clauses (12) and (13) respectively:**
- Z16.2.1** “The Adjudicator shall decide the dispute solely on the written submissions of the parties. No oral submissions shall be heard during adjudication.”
- Z16.2.2** “Disputes relating to or arising from termination of the Contract shall not be determined by an adjudicator. Any such dispute shall be referred directly to the tribunal in accordance with the procedures set out in clause W1.4.”
- Z17 Day:**
- Z17.1** Any reference to a day in terms of this contract shall be construed as a calendar day.
- Z18 Safety**
- Z18.1** The *Employer*, *Service Manager* or any of his nominated representatives may stop any unsafe *service*. The *Contractor* does not proceed with the relevant service until the safety violation is corrected. This instruction to stop or not to start the *service* is not a compensation event.
- Z18.2** As stipulated by section 37(2) of the Occupational Health and Safety Act No. 85 of 1993 (**OHS Act**) as amended the *Contractor* agrees to the following:
- Z18.2.1** As part of the contract the *Contractor* acknowledges that it is an *Employer* in its own right with duties as prescribed in the OHS Act, as amended and agrees to ensure that all work performed, or equipment and materials used, are in accordance with the provisions of the OHS Act.
- Z18.2.2** The *Contractor* furthermore agrees to comply with the requirements set forth by the *Service Manager* and agree to liaise with the *Employer* should the *Contractor*, for whatever reason, be unable to perform in terms of the clause Z18.



- Z18.3** The *Contractor* acknowledges that it is an *Employer* in its own right and is registered with duties as prescribed in the Compensation for Occupational Injuries & Diseases Act No. 130 of 1993.

C1.2 b - DATA PROVIDED BY THE *CONTRACTOR*

Clause	Statement	Data
10.1	The Contractor is (Name):	
	Company Registration Number	
	Company VAT Number	
	Address	
	Telephone no.	
	Fax No.	
11.2	The <i>working areas</i> are	See C3 'Service Information'
24.1	The <i>Contractor's Key people</i> are:	CV's to be appended to Resource Proposal (Annex F)
1	SITE MANAGER/TECHNICIAN	
	Name:	
	Qualifications relevant to this contract	
	Experience	
2	ARTISAN MECHANICAL	
	Name:	
	Qualifications relevant to this contract	



Experience

3

Name:

Qualifications relevant to this contract

Experience

4

Name:

Qualifications relevant to this contract

Experience

5

Name:

Qualifications relevant to this contract

Experience



Name:

Qualifications relevant to this contract

Experience

11.2 The following matters will be included in the Risk Register

1.

2.

3.

4.

5.

6.

C1.3 Occupational Health and Safety Agreement

OCCUPATIONAL HEALTH AND SAFETY AGREEMENT

AGREEMENT IN TERMS OF SECTION 37(2) OF THE OCCUPATIONAL HEALTH & SAFETY ACT (ACT 85 OF 1993) & CONSTRUCTION REGULATION 5.1(k)

OBJECTIVES

To assist Airport Company South Africa (ACSA) in order to comply with the requirements of:

1. The Occupational Health & Safety (Act 85 of 1993) and its regulations and
2. The Compensation for Occupational Injuries & Diseases Act (Act 130 of 1993) also known as the (COID Act).

To this end an Agreement must be concluded before any contractor/ subcontracted work may commence

The parties to this Agreement are:

Name of Organization: AIRPORTS COMPANY SOUTH AFRICA O R Tambo INTERNATIONAL AIRPORT
Physical Address: Airport Company South Africa OR Tambo International Airport ACSA Building, 4th Floor

Hereinafter referred to as “Client”

Name of organisation:
Physical Address:

Hereinafter referred to as “the Mandatary/ Principal Contractor”

MANDATORY'S MAIN SCOPE OF WORK

GENERAL INFORMATION FORMING PART OF THIS AGREEMENT

1. The Occupational Health & Safety Act comprises of SECTION 1-50 and all unrepealed REGULATIONS promulgated in terms of the former Machinery and Occupational Safety Act No.6 of 1983 as amended as well as other REGULATIONS which may be promulgated in terms of the Act and other relevant Acts pertaining to the job in hand.
2. "Mandatory" is defined as including as agent, a principal contractor or a contractor for work, but WITHOUT DEROGATING FROM HIS/HER STATUS IN HIS/HER RIGHT AS AN EMPLOYER or user of the plant
3. Section 37 of the Occupational Health & Safety Act potentially punishes Employers (PRINCIPAL CONTRACTOR) for unlawful acts or omissions of Mandatories (CONTRACTORS) save where a Written Agreement between the parties has been concluded containing arrangements and procedures to ensure compliance with the said Act BY THE MANDATARY.
4. All documents attached or refer to in the above Agreement form an integral part of the Agreement.
5. To perform in terms of this agreement Mandatories must be familiar and conversant with the relevant provisions of the Occupational Health & Safety Act 85 of 1993 (OHS Act) and applicable Regulations.
6. Mandatories who utilise the services of their own Mandatories (contractors) must conclude a similar Written Agreement with them.
7. Be advised that this Agreement places the onus on the Mandatory to contact the CLIENT in the event of inability to perform as per this Agreement.
8. This Agreement shall be binding for all work the Mandatory undertakes for the client.
9. All documentation according to the Safety checklist including a copy of the written Construction Manager appointment in terms of construction regulation 8, must be submitted 7 days before work commences.

THE UNDERTAKING

The Mandatory undertakes to comply with:

INSURANCE

1. The Mandatory warrants that all their employees and/or their contractor's employees if any are

covered in terms of the COID Act, which shall remain in force whilst any such employees are present on the Client's premises. A letter is required prior commencing any work on site confirming that the Principal contractor or contractor is in good standing with the Compensation Fund or Licensed Insurer.

2. The Mandatary warrants that they are in possession of the following insurance cover, which cover shall remain in force whilst they and /or their employees are present on the Client's premises, or which shall remain in force for that duration of their contractual relationship with the Client, whichever period is the longest.
 - a. Public Liability Insurance Cover as required by the Subcontract Agreement.
 - b. Any other Insurance cover that will adequately makes provision for any possible losses and/or claims arising from their and /or their Subcontractors and/or their respective employee's acts and/or omissions on the Client's premises.

COMPLIANCE WITH THE OCCUPATIONAL HEALTH & SAFETY ACT 85 OF 1993
--

The Mandatary undertakes to ensure that they and/or their subcontractors if any and/or their respective employees will at all times comply with the following conditions:

1. All work performed by the Mandatary on the Client's premises must be performed under the close supervision of the Mandatary's employees who are to be trained to understand the hazards associated with any work that the Mandatary performs on the Client's premises.
2. The Mandatary shall be assigned the responsibility in terms of Section 16(1) of the OHS Act 85 of 1993, if the Mandatary assigns any duty in terms of Section 16(2), a copy of such written assignment shall immediately be forwarded to the Client.
3. The Mandatary shall ensure that he/she familiarise himself/herself with the requirements of the OHS Act 85 of 1993 and that s/he and his/her employees and any of his subcontractors comply with the requirements.
4. The Mandatary shall ensure that a baseline risk assessment is performed by a competent person before commencement of any work in the Client's premises. A baseline risk assessment document will include identification of hazards and risk, analysis and evaluation of the risks and hazards identified, a documented plan and safe work procedures to mitigate, reduce or control the risks identified, and a monitoring and review plan of the risks and hazards.
5. The Mandatary shall appoint competent persons who shall be trained on any Occupational Health & Safety aspect pertaining to them or to the work that is to be performed.
6. The Mandatary shall ensure that discipline regarding Occupational Health & Safety shall be strictly enforced.
7. Any personal protective equipment required shall be issued by the Mandatary to his/her

employees and shall be worn at all times.

8. Written safe working practices/procedures and precautionary measures shall be made available and enforced and all employees shall be made conversant with the contents of these practises.
9. No unsafe equipment/machinery and/or articles shall be used by the Mandatary or contractor on the Client's premises.
10. All incidents/accidents referred to in OHSAct shall be reported by the Mandatary to the Provincial Director: Department of Labour as well as to the Client.
11. No use shall be made by the Mandatary and/or their employees and or their subcontractors of any of the Client's machinery/article/substance/plant/personal protective equipment without prior written approval.
12. The Mandatary shall ensure that work for which the issuing of permit is required shall not be performed prior to the obtaining of a duly completed approved permit.
13. The Mandatary shall ensure that no alcohol or any other intoxicating substance shall be allowed on the Client's premises. Anyone suspected to be under the influence of alcohol or any other intoxicating substance shall not be allowed on the premises. Anyone found on the premises suspected to be under the influence of alcohol or any other intoxicating substance shall be escorted off the said premises immediately.
14. Full participation by the Mandatary shall be given to the employees of the Client if and when they inquire into Occupational Health & Safety.

FURTHER UNDERTAKING

1. Only a duly authorised representative appointed in terms of Section 16.2 of the OHS Act is eligible to sign this agreement on behalf of the Mandatary. The signing power of this representative must be designated in writing by the Chief Executive Officer of the Mandatary. A copy of this letter must be made available to the Client.
2. The Mandatary confirms that he has been informed that he must report to the Client's management, in writing anything he/she deems to be unhealthy and /or unsafe. He has versed his employees in this regard.
3. The Mandatary warrants that he/she shall not endanger the health & safety of the Client's employees and other persons in any way whilst performing work on the Client's premises.
4. The Mandatary understands that no work may commence on the Client's premises until this procedure is duly completed, signed and received by the Client.
5. Non-compliance with any of the above clauses may lead to an immediate cancellation of the contract.



ACCEPTANCE BY MANDATARY

In terms of section 37(2) of the Occupational Health & Safety Act 85 of 1993 and section 5.1(k) of the Construction Regulations 2014,

Ia duly authorised 16.2 Appointee acting for and on behalf of(company name) undertake to ensure that the requirements and the provision of the OHS Act 85 of 1993 and its regulations are complied with.

Mandatory – WCA/ Federated Employers Mutual No.....

Expiry date

SIGNATURE ON BEHALF OF MANDATARY
(Warrant his authority to sign)

DATE

SIGNATURE ON BEHALF OF THE CLIENT
AIRPORT COMPANY SOUTH AFRICA

DATE

C1.4 Forms of Securities

No performance bond or parent company guarantee is required in this contract

C1.5 Insurance Schedule

Summary of Terms and other Matters Applicable to Employer Provided Insurance

Part 1:

Notes to Schedule:

- The provision of insurance by the *Employer* does not limit the obligations, liabilities or responsibilities of the *Contractor* under this contract in any way whatsoever (including but not limited to any requirement for the provision by the *Contractor* of any other insurances).
- Unless specifically otherwise stated, capitalised terms in this schedule (other than *Employer*, *Contractor* and *works* where written in italics) have the meaning assigned to them in the relevant policy of insurance.
- This Insurance Schedule is a generic term sheet generally applicable to the Employer's projects. In the circumstances:
 - If this Insurance Schedule reflects the amount of any cover provided by the *Employer* to be higher than the amount required in the Contract Data, the *Employer's* obligation under this Contract is limited to the lower amount; and
 - If this Insurance Schedule provides for any cover which is not stated to be provided by the *Employer* in the Contract Data, the *Employer's* obligation under this Contract is limited to the cover stated in the Contract Data.
- [The terms governing the Employer provided policies of insurance are the terms detailed in the policies themselves. This schedule is merely a summary of the key terms. It is the responsibility of the tenderer to obtain copies of the policies and satisfy itself of the actual terms as required by the tenderer.]

Part 2:

ACSA Maintenance Contracts Insurance Clause. Insurance Affected by the Employer.

Notwithstanding anything elsewhere contained in the Contract and without limiting the obligations liabilities or responsibilities of the Contractor in any way whatsoever (including but not limited to any requirement for the provision by the Contractor of any other insurances) the Employer shall effect and maintain as appropriate in the joint names of the Employer , Contractors and Sub-Contractors, Consultants and Sub-Consultants the following insurances which are subject to the terms, limits, exceptions and conditions of the Policy:

- a) **PUBLIC LIABILITY Insurance** – which will provide indemnity against the insured parties legal liability in the event of accidental death of or injury to third party persons and/or accidental loss of or damage to third party property arising directly from the execution of the contract with a limit of indemnity of **R 100 million** in respect of all claims arising from any one occurrence or series of occurrences consequent on or attributable to one source or original cause. The policy will be subject to a Deductible of **R25 000** for Property Damage claims only but **R250 000** where Loss or Damage involves Aircraft.
 - (i) The Employer shall pay any premium due in connection with the insurance affected by the Employer.
 - (ii) The Contractor shall not include any premium charges for this insurance except to the extent that he may deem necessary in his own interests to effect supplementary insurance to the insurance effected by the Employer. The Employer reserves the

right to call for full information regarding insurance costs included by the Contractor.

- (iii) Any further clarification of the scope of cover provided by the Policies arranged by the Employer should be obtained from the Employer.
- (iv) In the event of any occurrence which is likely to or could give rise to a claim under the insurances arranged by the Employer the Contractor shall:
 - (A) in addition to any statutory requirement or other requirements contained in the Contract immediately notify the Employer's Insurance Broker or the Insurers by telephone or telefax giving the circumstances nature and an estimate of the loss or damage or liability
 - (B) complete a Claims Advice Form available from the Insurance Brokers to whom the form must be returned without delay.
 - (C) negotiate the settlement of claims with the Insurers through the Employer's Insurance Brokers and shall when required to do so obtain the Employer's approval of such settlement.

The Employer and Insurers shall have the right to make all and any enquiries to the site of the Works or elsewhere as to the cause and results of any such occurrence and the Contractor shall co-operate in the carrying out of such enquiries.

- (v) The Contractor will be liable for the amount of the Deductible (First Amount Payable in respect of any claim made by or against the Contractor or Sub-Contractors under the insurances effected by the Employer.
Where more than one Contractor is involved in the same claim the Deductible will be borne in pro-rata amounts by each Contractor in proportion to the extent of each Contractor's admitted claim.
- (vi) Any amount which becomes payable to the Contractor or any of his Sub-Contractors as a result of a claim under the Contact Works Insurance shall if required by the Employer be paid net of the Deductible to the Employer who shall pay the Contractor from the proceeds of such payment upon rectification repair or reinstatement of the loss or damage but this provision shall not in any way affect the Contractor's obligations liabilities or responsibilities in terms of the Contract.
In respect of any amount which becomes payable as a result of a claim under any Public Liability Insurance the Contractor or his Sub-Contractors shall be required to pay the amount of the Deductible to the Insurer to facilitate settlement of such claim.

Insurance Affected by the Contractor.

Without in any way detracting from any requirements contained elsewhere in this contract the Contractor and Sub-Contractors shall where applicable, provide as a minimum the following:

- (a) **INSURANCE OF CONTRACTORS EQUIPMENT** (including tools offices and other temporary structures and contents) and other things (except those intended for incorporation into the Works) brought onto the Site for a sum sufficient to provide for their replacement.
- (b) Insurance in terms of the provisions of the Compensation for Occupational Injuries and Diseases Act No. 130 of 1993 as may be amended or in terms of any similar Workers Compensation and Unemployment Insurance enactment's in the Suppliers' or Sub Supplier's operational, manufacturing or assembly locations.
- (c) Motor Vehicle Liability Insurance comprising (as a minimum) "Balance of Third Party" Risks including Passenger Liability indemnity.
- (d) Public Liability Insurance for an amount sufficient to cover the Contractors obligations in terms of the Deductible of **R25 000** or **R250 000** as stated above.
 - i. The insurances to be provided by the Contractor and his Sub-Contractors shall:



- (A) be affected with Insurers and on terms approved by the Employer.
 - (B) be maintained in force for whatever period the perils to be insured by the Contractor are at risk (including any defects liability period during which the Contractor is responsible for the care of the Works)
 - (C) submit to the Employer the relevant Policy or Policies of Insurance or evidence acceptable to the Employer that such insurances have been affected.
- ii. In the event that the Contractor or his Sub-Contractor receives any notice of cancellation or restrictive modification to the insurance provided to them they shall immediately notify the Employer in writing of such cancellation or restriction and shall advise what action the Contractor or his Sub-Contractor will take to remedy such action.

If the Contractor fails to effect and keep in force the insurances referred to then the Employer may effect and keep in force any such insurances and pay such premium or premiums as may be necessary for that purpose and from time to time deduct the amount paid by the Employer from any monies due or which may become due to the Contractor or recover same as a debt from the Contractor.

Sub-Contractors

The Contractor shall:

- a) ensure that all potential and appointed Sub-Contractors are aware of the whole contents of this clause, and
- b) enforce the compliance by Sub-Contractors with this clause where applicable.”

C2.1 Pricing assumptions: Option A

The conditions of contract

How work is priced and assessed for payment

Clause 11 in NEC3 Term Service Contract, April 2013 (TSC3) core clauses and Option A states:

- | | | |
|-------------------------------------|------------|--|
| Identified and defined terms | 11
11.2 | (12) The Price List is the <i>price list</i> unless later changed in accordance with this contract.

(17) The Price for Services Provided to Date is the total of

the Price for each lump sum item in the Price List which the <i>Contractor</i> has completed and
where a quantity is stated for an item in the Price List, an amount calculated by multiplying the quantity which the <i>Contractor</i> has completed by the rate.

(19) The Prices are the amounts stated in the Price column of the Price List. Where a quantity is stated for an item in the Price List, the Price is calculated by multiplying the quantity by the rate. |
|-------------------------------------|------------|--|

This confirms that Option A is a priced contract where the Prices are derived from a list of items of service which can be priced as lump sums or as expected quantities of service multiplied by a rate or a mix of both. Where it is contemplated that the Price List represents the type of work, quantity and cost thereof which may or not be selected by the Employer, it is important to ensure that service items listed do not create liability on a daily basis if that is not the intention. For example, if the service is maintenance of an installation on an ad hoc or call-off basis which may require the Contractor to be on standby but not permanently on the Affected Property, avoid listing service items which may be treated as preliminary and general (P&Gs) items, whether fixed or time-related such as contractual requirements, establishing on site, offices, storage, ablutions, water supplies, power supply, telecommunications. The Price List should align with the intention of the contract and selection of Option X 19 should be considered. If the Contractor is required to price P&G items ensure that the tender, contract and Price List provides clearly that daily charges are applicable only as necessitated by the specific activity and authorised by the Service Manager. Particular care should be taken when utilising SANS 1200 as a guide for tenderers or for preparing templates for Price Lists in tenders. Avoid referring to the Price List as the Activity Schedule.

Function of the Price List

Clause 54.1 in Option A states: "Information in the Price List is not Service Information". This confirms that instructions to do work or how it is to be done are not included in the Price List but in the Service Information. This is further confirmed by Clause 20.1 which states, "The *Contractor* Provides the Service in accordance with the Service Information". Hence the *Contractor* does **not** Provide the Service in accordance with the Price List. The Price List is only a pricing document.

Link to the *Contractor's* plan

Clause 21.4 states "The *Contractor* provides information which shows how each item description on the Price List relates to the operations on each plan which he submits for acceptance". Hence when compiling the *price*

list, the tendering contractor needs to develop his first clause 21.2 plan in such a way that operations shown on it can be priced in the *price list* and result in a satisfactory cash flow in terms of clause 11.2(17).

Preparing the *price list*

It will be assumed that the tendering contractor has read Pages 14, 15 and 76 of the TSC3 Guidance Notes before preparing the *price list*. Items in the *price list* may have been inserted by the *Employer* and the tendering contractor should insert any additional items which he considers necessary. Whichever party provides the items in the *price list* the total of the Prices is assumed to be fully inclusive of everything necessary to Provide the Service as described at the time of entering into this contract.

1 As the *Contractor* has an obligation to correct Defects (core clause 42.1) and there is no compensation event for this unless the Defect was due to an *Employer's* risk, the lump sum Prices and rates must also include for the correction of Defects.

2 If the *Contractor* has decided not to identify a particular item in the *price list* at the time of tender the cost to the *Contractor* of doing the work must be included in, or spread across, the other Prices and rates in the *price list* in order to fulfil the obligation to complete the *service* for the tendered total of the Prices.

3 There is no adjustment to lump sum prices in the *price list* if the amount, or quantity, of work within that lump sum item of service later turns out to be different to that which the *Contractor* estimated at time of tender. The only basis for a change to the Prices is as a result of a compensation event. See Clause 60.1.

4 Hence the Prices and rates tendered by the *Contractor* in the *price list* are inclusive of everything necessary and incidental to Providing the Service in accordance with the Service Information, as it was at the time of tender, as well as correct any Defects not caused by an *Employer's* risk.

5 The *Contractor* does not have to allow in his Prices and rates for matters that may arise as a result of a compensation event. It should be noted that the list of compensation events includes those arising as a result of an *Employer's* risk event listed in core clause 80.1.

Format of the *price list*

(From page 76 of the TSC3 Guidance Notes)

Entries in the first four columns in the *price list* in section C2.2 are made either by the *Employer* or the tendering contractor.

If the *Contractor* is to be paid an amount for the item which is not adjusted if the quantity of work in the item changes, the tendering contractor enters the amount in the Price column only, the Unit, Expected Quantity and Rate columns being left blank.

If the *Contractor* is to be paid an amount for an item of work which is the rate for the work multiplied by the quantity completed, the tendering contractor enters the rate which is then multiplied by the Expected Quantity to produce the Price, which is also entered.

If the *Contractor* is to be paid a Price for an item proportional to the length of time for which a service is provided, a unit of time is stated in the Unit column and the expected length of time (as a quantity of the stated units of time) is stated in the Expected Quantity column.

C2.2 Price List

The following Activity Schedule is provided “as-is” for the benefit of the Bidder. ACSA (the Employer) cannot guarantee that it is complete in all respects. The Bidder is responsible for providing an Activity Schedule which is accurate, complete and in accordance with their proposal. Also, refer to C3 (Service information) for activities that need to be priced. Only items listed in this Activity Schedule may be billed to the Employer.

ACSA reserves the right to vary all the activities according to the rates given in this contract.

Table A: Activity Schedule Part 1 : Alpha PLBs

Item no.	Activity Description	Frequency	Quantity (per 6 months)	Amount (per single item)	Total (per 6 months)
Preliminary and General					
1	Airport permits and parking fees – provisional sum	Once off	1	R1 800.00	R1 800.00
2	Contract Management and administration	Monthly	6		
3	Insurance (ACSA required for this contract)	Monthly	6		
4	Store supervision and Monthly reports	Monthly	6		
5	PPE and Cell phone	Monthly	6		
Total Preliminary & General					R
Maintenance & Inspections					
6	Daily Inspections	Daily			
7	Monthly Inspections and Tests	Monthly			
8	Quarterly Preventative Maintenance	Quarterly			
9	Semi-Annual Preventative Maintenance	Six Monthly			
10	Annual Preventative Maintenance	Annually			
*Other					
11	Other1 specify:				
12	Other 2 specify:				
13	Other 3 specify:				
Total Maintenance & Inspections					
Total	Sub-total A (Total Preliminary & General + Total Maintenance & Inspections)				R

*The above activity schedule is minimum work required and the contractor as the subject expect matter on these services they are bidding for **shall fill in any other** activity with prices for “other” activities which they deem necessary to achieve the set out comes on availability ,reliability, maintainability, MTTR, MTBF, legislative and all other targets set in this contract. **Should an alternative not be presented, the offer will be deemed as the contractor’s optimal proposal for which they will be liable for.**

**All rates for all activities including diagnostic and repair shall include all required tools, software, hardware and consumables (including all applicable specialized tools and software, hardware and consumables) Onus is on the contractor to price correctly).

***It is noted that the required labour resources and skills for this contract is not prescribed in detail. The contractor is fully responsible to ensure that labour resources remain adequate and competent in order to maintain required service levels, system performance levels and according to all applicable laws and regulations. The Tenderer shall also ensure that all required maintenance is catered for as per the Original Equipment Manufacturer in the pricing above.

Labour rates and Mark-up

Any work not included under part 1 shall be deemed additional work or non-scheduled items and will be charged at the following rates:

Activity Schedule – part 2 (Labour rates and Mark-up - Breakdowns)

Any work not included under part 1 shall be deemed additional work or non-scheduled items and will be charged at the following rates:

*All rates to exclude vat. Subject to mutual agreement between ACSA and the Contractor, the number of staff allocated to the contract may be increased/decreased to cater for special needs that may arise from time to time.

Labour rates shall include all personnel insurance, holidays with pay, incentive bonuses.

Note: No labour shall be charged for travel or travelling. Labour time shall be calculated for the time spent on site.

Call out rate must include all required travelling and the **first hour on site**.

i) **LABOUR RATES: (to be filled in)**

Item	Description	Normal hours(R/hour)	After hours (R/hou	
			Saturday	Sunday/public holiday
1	Site Manager/Technician			
2	Assistant Mechanical			
3	Other specify:			
4	Other specify:			

Detail requirements regarding staff

The Contractor shall continuously ensure that all staff is suitable, able and competent for the duties required of them. Staff must have experience and applicable competencies as per OEM and all legislations in the maintenance Passenger Loading Bridges. The Contractor shall continuously ensure that all staff is knowledgeable on all equipment relating to the Passenger Loading Bridges.

Note the following minimum below as per standardised Mechanical resources per infrastructure:

Site supervisor	<ul style="list-style-type: none"> Instrumentation and control/Electrical/Millwright Trade test Any OHS Training certificate 	<ul style="list-style-type: none"> Min 3 years experience post trade test qualification 2 years supervisory Experience Min 2 years OHS experience
Technician	Electrical/Instrument and control trade test	<ul style="list-style-type: none"> Min 3 years experience post trade test qualification and at least 1 year must be in the maintenance of PLBs
Assistant Mechanical	N2 Mechanical	1 Year experience in maintenance of mechanical equipment

ii) **CALL OUT FEE + DIAGNOSTIC AND REPAIR RATES**

NOTE:

- All rates for all activities including diagnostic and repair shall include all required tools, software, hardware and consumables (including all applicable specialized tools and software, hardware and consumables) Onus is on the contractor to price correctly).
- All *call out* shall include all applicable travelling, all personnel insurance, holidays with pay, incentive bonuses etc. Labour laws and all applicable laws shall be followed by the contractor.
- Call outs are not chargeable during hours technician/artisan/assistants or any applicable resource are on site.
- Call outs are not chargeable during working hours' technician/ assistants are on site (08:00 – 17:00)
- The contractor will be compensated according to the contractor's repair rate provided in the below table B and it is subject to discussion with the service manager due to proven factors that are beyond the contractor's control (some of the internal and external factors are listed in Annex T) .
- Call-out remuneration is applicable to activities falling out of preventative maintenance activities that were supposed to be done by the contractor, thus ACSA will not pay for breakdown which are due to preventative maintenance negligence by the contractor.

Table B: Call outs + Labour

Description		Quantity	Call out fee- (Contractor to fill in)	Total/ 6 months (Contractor to fill in)		
Call Out						
*Call out Fee which includes first hour on site and travelling fee (after hours, weekends and holidays)		8	R	R		
Total call out fee				R		
Diagnostic with repairs table: (time below includes the total time to do diagnostics and repairs for each failure mode and completely resolve the issues leaving the infrastructure totally correctly functional. Note the rates must include all required tools, special tools, software and hardware require to completely resolve the failure)						
Item #	Call description	Estimated time to repair/reset	Budgeted Quantity	Contractor time to	Rate per hour (after	Total: qty X contractor time to

		(hrs.) as logged in the ACSA system		repair: (Contractor to fill in)	hours): (Contractor to fill in)	repair X rate (Contractor to fill in)
1	Auto Level Fault	1.2	2			
2	Damaged staircase ladder	2	1			
3	Damaged cable	720	0			
4	UPS battery fault	2	1			
5	Damaged GPU cable bracket	1.4	0			
6	GPU hoist fault	0.8	0			
7	GPU cable down	0.71	0			
8	PLB not parked	0.5	0			
9	Hoop switch fault	0.5	1			
10	Slope limit fault	0.33	0			
11	Service door not closed	0.36	0			
12	Service door window broken	2	1			
13	Swing Limit fault	1.54	1			
14	Faulty safety shoe	0.5	1			
15	Card reader faulty	1.1	1			
16	Power Related faults	2	1			
17	GPU power related fault	0.06	0			
18	Glass broken	1.66	0			
19	Docking / comms	0.5	1			
20	Aircraft wrong stop	0.2	0			
21	Emergency stop activated	0.4	1			
22	Inverter fault	0.6	1			
23	Ignition switch fault	1	1			
24	Air-condition unit fault	0.4	0			
25	Canopy limit fault	0.8	1			
26	Height sensor fault	1.35	1			
27	Camera frozen	0.45	0			
28	Computer fault	0.5	1			
29	Other: Unforeseen breakdown	2	1			
30	Other: Unforeseen breakdown	2	1			
31	Other: Unforeseen breakdown	2	1			
**Total Diagnostic and repairs					R	
Sub-total B (*Call out fee + **Diagnostic and repair)					R	

iii) SPARES and MARK -UP

***Spares** will be managed by the contractor using ACSA's manual inventory management system.

The manual inventory management system will include but not limited to;

- Conducting and submission of monthly and quarterly stock count to the Service Manager by the contractor,
- Keeping up-to-date inventory cards by the contractor,
- Management of spares movement by the contractor,
- Keeping an up-to-date inventory file (purchase order and request, work order, delivery note, stock count records, etc.).
- Ensure safety and security of the storeroom by the contractor as per space given to them.
- The space for spare storage shall be allocated by ACSA to the contractor and can be a shared space as per space availability.
- Management of inventory by the contractor as per ACSA inventory procedure

Spares:

Description	Total (excluding VAT)
Subtotal C- provisional sum for spares	<u>R 100 000-00</u>

Mark-up (third party procured items/services)

Bidder to complete

Value of Item or Services	**Mark-up (Contractor to fill in)	Spares amount for budget purposes *Z*
R0 - R2,000	%	R2 000.00
R2,001 - R5,000	%	R5 000.00
R5,001 - R10,000	%	R10 000.00
R10,001 - R50,000	%	R23 000.00

^bCost shall be net cost (excluding VAT) of parts delivered to site with all discounts deducted.

**The inserted amount *Z* are for budgeting purposes. The Total mark -up amount in the table is not guaranteed, but the mark-up will be applicable on third party quotations as per requirements of the system. Thus, the contractor will be held accountable to the mark-up filled in this table.*

***The mark-up will be applicable to the total of the third-party quotation not on a single line items in a quotation.*

Spares and sub – contractors work will be charged at cost plus mark-up. VAT shall not form part of mark-up calculations. Cost shall be net cost (excluding VAT) of parts supplied to site with all discounts deducted.

The spares list must be prepared based on tenderers best current spares prices (excl. VAT). The actual costs of spares will be reimbursed on submission of invoices and suppliers supporting documents.

Contract value

Below, the guide that must be used in estimating the contract value. This amount must be reported as the Contract Value in the corresponding schedules. Tenderers are reminded that this amount is for illustrative purposes only and that ACSA will not be under any obligation to expend the full or any portion



of this amount. Monthly contract expenditure will be strictly calculated according to the Activity Schedule as provided above.

Passenger loading bridges six (6) months maintenance expenditure:

Description	Total (excluding VAT)
Sub-total A (Total Preliminary & General + Total Maintenance & Inspections)	R
Sub-total B (*Call out fee + **Diagnostic and repairs)	R
Sub-total C (Spares provisional sum)	R 100 0000
*Total E- Total maintenance cost for <u>6 months</u>	R

Note:

***TOTAL- E** (i.e. Total maintenance cost for duration of the contract) must be carried to the form of offer and acceptance

The values in this table/contract are not guaranteed, payment will be done as per approved work/activity done and assessments in this contract.

C3 Service Information

DESCRIPTION OF THE WORKS

Employer's objectives

The objective is to maintain the serviceability of passenger loading bridges at OR Tambo International Airport in a sustainable manner at the lowest operating and maintenance costs while ensuring compliance to general safety and aviation related legislation.

The Contractor will maintain all passenger loading bridges at OR Tambo International Airport as minimum described in the Overview of the works below. The Contractor will be appointed directly by the Airports Company of South Africa.

Onus is on the contractor to provide assurance that competent persons would be carrying out all tasks in accordance with all the applicable standards, OEM requirements, procedures, regulations and legislative requirements. Note there are interfaces with the PLB card reader which are maintained by the ACSA_IT contractor.

Scope of work

Equipment Life Span

- ❖ The life span of the Alpha Apron passenger Loading bridges is 20 years (refer to **Annex C** for the list and life span)
- ❖ The list of equipment commissioning dates has been provided on **Annex B**.

OEM Requirements

The O.E.M recommended the below preventive maintenance for the Alpha apron passenger loading bridges:

- ❖ Quarterly maintenance
- ❖ Bi- annual maintenance
- ❖ Annual Maintenance

ACSA: O.R Tambo international Airport has since implemented daily inspections for the Alpha passenger loading bridges.

Condition of the plant

The maintenance history of the equipment has been logged with ACSA Integrated maintenance centre.

- ❖ The list breakdowns and faults experienced and the estimated time for repair on the Alpha Apron PLBs are listed on **Annexure H**.
- ❖ The preventative maintenance previously performed on the Alpha Apron PLBs are listed on **Annex F**, for the actual work orders with tasks, ACSA Integrated maintenance centre can be contacted to issue actual or, the below link can also be used to access these records:
https://airports-my.sharepoint.com/:f:/r/personal/busisiwe_mthimunya_airports_co_za/Documents/Lebogang/OLD?csf=1&web=1&e=Voaky6

- ❖ A sample of root cause analysis on the Alpha Apron PLBs has been attached on **Annex G**. Also, the root cause analysis must be performed, and the Root cause analysis form completed by the contractor and handed over to ACSA service manager after each breakdown.

Site Information

- ❖ The alpha apron passenger loading bridges are located at on the airside at ORT International Airport (refer to Annexure A for a full list of equipment).
- ❖ The airside layout and site information has been provided on **Annex D**.

Minimum work requirements and Legislations:

Maintenance of these alpha aprons shall as minimum conform to the following Procedure and or other legislative references (Gazetted Standards or OHS Regulations):

- ❖ Maintenance of Passenger Loading Bridges - IATA AHM 922
- ❖ ACSA maintenance procedure for Passenger loading Bridges - D080 029M as provided in **Annex N**.
- ❖ The preventative maintenance previously performed on the Alpha Apron PLBs are listed on **Annex F**, for the actual work orders, ACSA Integrated maintenance centre can be contacted OR the below link can also be used to access these records:
https://airports-my.sharepoint.com/:f:/r/personal/busisiwe_mthimunye_airports_co_za/Documents/Lebogang/OLD?csf=1&web=1&e=Voaky6

Note: above is the list of minimum regulations and legislative requirements that the contractor needs to adhere to as mandatory requirements (**work should be carried out by competent people as prescribed in the law and shall be auditable by the employer at any given time**)

Access to site

- ❖ Airside training and permit should be completed and issued before accessing airside and commencement of work.
- ❖ AVOP training and permit should be completed and issued before the commencement of work for personnel driving required to drive on airside.
- ❖ Permission must be obtained from ACSA operations and IMC before an equipment can handed over to the contractor for works and such arrangements must be done prior and timeously.

Site Restrictions

- ❖ Airside training and permit should be completed and issued before accessing airside and commencement of work.
- ❖ AVOP training and permit should be completed and issued before the commencement of work for personnel driving required to drive on airside
- ❖ The safety file should be completed and approved by the safety department before commencement of work. The safety file is a living document and must be continuously updated with all requirement as specified by law. Also, will be auditable from time to time.
- ❖ Personal Protective Equipment should be issued before the commencement of work.

Risk

There are some of the risks identified but not limited to the below and to **Annex E** list.

Current Guarantees and warranties to be maintained:

❖ Annex W - N/A

Extent of the works

The Contractor will be fully responsible for meeting all requirements in this document regarding the Works.

For each piece of equipment, all work will be carried out to standards as required by the Original Equipment Manufacturer (OEM) as well as any applicable governing law and/or regulations. Where OEM standards differ from those required by this document the more stringent requirement shall apply. The Contractor will be fully responsible for obtaining (and keeping up to date with) said requirements.

Where, such a need is mutually agreed between the Contractor and the Employer, the Employer shall put in place a "Hotline" (i.e. 24-hour telephonic support by product specialist) agreement with the relevant OEM. In this event the Contractor shall be responsible that such Hotline services are always operational and available, but all costs in this regard shall be carried by the Employer. The Contractor shall NOT add any mark-up to any Hotline related expenses. A "Hotline" agreement shall typically ensure that problems relating to system controls are promptly rectified. It is intended that Hotline agreements will be in place with OEMs for PLC related controls and computerised control systems.

The Contractor will be responsible for providing staff which are sufficiently skilled and qualified for successful execution of the works. The Contractor shall comply with the Minimum Staffing Schedule always – as stipulated in the Annexes. This may be amended by mutual arrangement between the Employer and the Contractor from time to time.

The Contractor shall always remain responsible to ensure that the on-site staff complement and maintenance regime is sufficient to maintain the service levels and system performance indicators as stipulated in the Annexes. Should the Contractor not be able to maintain adequate system performance indicators due to constraints caused by the Employer, it shall be timeously reported, in writing, to the Contract Manager. Refer to the Annexes for the required system performance indicators.

The Contractor will ensure that his/her staff complement is of a sufficient quantity to allow for uninterrupted supply of labour in the event of his/her staff taking sick leave, paid leave and will allow for all staff related eventualities.

The Contractor shall continuously ensure that all staff is suitable, able and competent for the duties required of them. The Contractor shall continuously ensure that all staff is knowledgeable and dependable in passenger loading bridges maintenance activities/procedures in the area. The Contractor shall further ensure that any staff member reasonably suspected of partaking in criminal activities is immediately removed from site and his permit returned to and/or cancelled at the ACSA Permit Office.

All work shall be performed within the required Response Times – as stipulated in the Annexes. Any breakdown impacting on operations shall be attended-to until restored to good reliable condition. No breakdown may be left unattended or incomplete for the next day or shift. All repair work shall carry a defect free be guaranteed for a period of 3 months after completion of work.

All work shall be charged according to the Activity Schedule. However, no labour shall be charged for any non-scheduled work, repair work or other work when carried out by a scheduled maintenance shift.

The Contractor will be responsible for keeping spares levels up to a sufficient quantity and standard as to comply with the requirements of this contract and will charge the Employer accordingly. All spares will be charged according to the Activity Schedule. The Contractor shall arrange for the spares room. The Contractor shall keep the spares room in a neat and clean state and an updated spares list will always be available on-site. Spares will be neatly arranged and easily locatable via an appropriate index on the spares list. Wherever practicable, a notice will be placed on the rack, next to the spare part, as to where the part is used in the installation. A resource will be dedicated to ensuring that spares are effectively managed and scrapped parts and waste removed from site. The space for spare storage shall be allocated by ACSA to the contractor and can be a shared space as per space availability.

The Contractor will be responsible for holding all tools and/or special equipment that might be required for the execution of the works, either on site or on their premises in order to comply with the Response Time requirements of this contract. Any exclusion to the above should be clearly communicated in the returnable schedules when submitting the tender.

The Contractor shall ensure that, unless a special arrangement is made with the Service Manager, all senior staff members and on-site support staff is always immediately reachable via cell phone.

The Contractor shall ensure that all maintenance staff are issued with uniforms that will comply with a minimum requirement as agreed with the Service Manager from time to time. Current airport requirements are safety shoes, track suit and a uniquely numbered reflective jacket (for easy identification via CCTV).

Location of the works

The Works are located at O. R. Tambo International Airport at various locations – mostly in controlled areas. It is crucial for the Contractor to note that O. R. Tambo International Airport is a National Key Point and governed as such.

PROCUREMENT

Preferential procurement procedures

Requirements

The Contractor will respect OEM warranties to the Employer always when procuring spare parts, products or 3rd party services. It will be the Contractor's sole responsibility to ensure that OEM warranty requirements are adhered to always.

Where Contractors use or quote on spare parts of a lower quality than recommended by the OEM, or parts not recommended by the OEM, this shall be clearly indicated to the Service Manager on the quotation. This also implies that the Contractor must build relationships with the various key OEM's.

The Contractor must adhere to all airport requirements regarding fire, health and safety when procuring replacement conveyor belts and/or other equipment or spares.

No casual labour (i.e. "off the street" labour) may be employed by the Contractor unless pre-arranged with the Employer. Whenever this is required, the Contractor shall come to a suitable arrangement with the Employer regarding sourcing and screening of such individuals.

Subcontracting

No part of this Contract may be subcontracted unless with written approval from the Employer. the Employer shall be under no obligation to grant such approval. Should any part of this Contract be subcontracted, the Contractor will be responsible for all Works (or failure to affect the Works) as if it was done so by the Contractor.

MANAGEMENT

Management of the works

Particular / generic specifications

All work shall conform to all relevant SANS standards, OHS ACT regulations and all other legislation that might be relevant to this Contract and the execution thereof.

All work shall be carried out in accordance with prevailing industry norms and best practice and will always comply with OEM requirements.

Planning and programming

All maintenance work shall be scheduled, and a roster presented to the Service Manager at the end of the preceding month. Work shall be scheduled in a manner as not to interfere with any normal airport operations.

Normal airport operational hours shall be **from 04:00 to 24:00** for every day of the year.

As a **minimum** requirement, the Contractor shall roster **scheduled** preventative maintenance activities.

Maintenance teams will attend to scheduled preventative maintenance, non-scheduled maintenance and breakdown maintenance. The Contractor must ensure that no scheduled maintenance work is carried over to the following week.

All Preventative Maintenance shall be scheduled, at least, to the requirements of the annexures (The Contractor must ensure that sufficient allowances for all these items are made with his/her pricing in the Activity Schedule.)

Methods and procedures

The Contractor must accept and respect the fact that the Airport is continuously undergoing construction and improvement and that a variety of stakeholders are involved in the Employer's business. Therefore, within reason and with prior arrangement with the Contractor, the Employer might require the following from time to time:

- Assisting with emergency repairs on
- Assisting with airport operations Re-scheduling of work to accommodate other contractors
- Allowing access and providing assistance to OEM suppliers to correct defects on equipment and/or systems
- Checking on other contractors in order to reduce risk to passenger loading bridges
- Pointing out services to consultants or other contractors
- Providing access to other contractors
- Attending co-ordination and planning meetings

- Removing rubble and/or equipment from site
- Training of ACSA operators and/or technicians
- Training of check-in of passenger loading bridges staff
- Providing of system data and/or statistics to ACSA
- Recommending improvements on maintenance procedures
- Recommending improvements on operational procedures
- Co-operating with ACSA Security relating to security issues
- Safe / legal disposal of used and irreparable spares

The Service Manager may instruct operational and works procedures to the Contractor as might be required from time to time. The Contractor will instruct his/her staff accordingly and implement measures to ensure that these procedures are strictly adhered to.

Quality plans and control

All work must be executed in accordance with prevailing industry norms and standards relating to quality. In this regard, the Contractor will be expected to draft quality plans for the Service Manager from time to time. Emphasis must be on improving system reliability and on ensuring that rostered maintenance work is indeed performed as and when required.

Environment

The Contractor will keep noise and dust levels to a minimum. At no time, shall his/her work result in nuisance, interference or danger to the public or any other person working at the Airport.

At no time, shall the Contractor:

- allow any pollutive or toxic substance to be released into the air or storm water systems
- interfere with, or put at risk, the functionality of any system or service
- cause a fire or safety hazard

Format of communications

Work instructions, daily check sheets, monthly maintenance reports, inventory reports, breakdown reports, exception reports, etc. will all be in a format as agreed with the Service Manager.

Key personnel

A schedule of key personnel to this Contract (as per the Schedules) will be provided to the Service Manager at commencement of this Contract. This will, as a minimum, include all persons from technician level to management level. For the full duration of this Contract, none of these persons will be replaced by a person of lesser ability or qualification. All on-site staff leaves shall be reported and agreed with the Service Manager.

Management meetings

The Contractor will be expected to attend meetings relating to maintenance, operations, contract management and other issues that may arise from time to time. As far as is practicable, the Contractor will make all required persons available for these meetings. The Contractor shall not submit claims for payment for staff attending any of these meetings.

Electronic payments

The Contractor should arrange with the Employer's finance department for making all payments electronically.

Daily records

The Contractor shall keep accurate daily records of staff attendance, maintenance work, safety inspections and exception reports. Records shall be available for scrutiny by the Service Manager at any time. All records shall be in a format as agreed with the Service Manager.

Monthly reports

When invoicing, the Contractor shall ensure that all required reports for the corresponding month are attached to the monthly invoice. This will include monthly reports on but not limited to:

1. system availability (averaged per week)
2. maintenance work (including % of scheduled maintenance work completed)
3. daily checks performed
4. maintenance plan for the next month
5. the latest spares inventory
6. Assets register up to date including equipment data
7. Root cause analysis records
8. Safety/Environmental or legislative issues and compliance
9. Outstanding maintenance issues

The Contractor shall keep copies of all reports and records for at least 3 years. All reports shall be in a format as agreed with the Service Manager from time to time.

Permits

The Contractor shall not be compensated for costs relating to the Employer's required permits, or for labour/time spent in obtaining it. An allowance must be made in the Activity Schedule in this regard.

The Contractor must ensure that he/she is, always, familiar with the Employer's safety and security requirements relating to permits for no work to be delayed as a result thereof. This will include the permit application process.

Note that (within reason) the Contractor will have no claim against the Employer if a permit request is refused.

The following table is not all inclusive, but is provided for illustration purposes:

Permit	Required by/for	Department
AVOP – Airside Vehicle Operator permit	All drivers of vehicles on airside	ACSA Safety
Airside Vehicle Permit	All vehicles that enter airside	ACSA Safety
Basement Parking permit	All vehicles allowed to enter the delivery basement	ACSA Parking
Personal permit	All persons employed on the airport	ACSA Security

Cell phone permit	All persons taking cell phones to airside	ACSA Security
Lap top permit	All persons taking lap top computers to airside	ACSA Security
Camera permit	All persons taking cameras or camera equipment to airside	ACSA Security
Hot Works Permit	All welding and/metal cutting work	ACSA Safety

Proof of having attended the airside induction training course is required for all personal permit applications. Persons applying for an AVOP must provide proof of having attended an AVOP course. Fees are levied for these courses. Fees are further levied for all permit renewals and refresher courses - where applicable.

Proof of compliance with the law

The Service Manager may at any time request from the Contractor reasonable proof that the Contractor is in compliance with a law or regulation.

Health and safety

Health and safety requirements and procedures

The Service Manager shall be entitled to fine the Contractor low service damages for each non-conformance to Health and Safety matters. This shall not transfer any of the Contractor's responsibilities in this regard to the Employer by any means.

The Contractor shall be fully responsible for compliance to the Occupational Health and Safety Act for all persons, equipment and installations relating to this Contract. The Contractor is expected to sign the undertaking in this regard as attached in the annexes.

It shall be the Contractor's responsibility to ensure that all relevant labour and safety legislation is adhered to in rostering staff.

All persons on company premises shall obey all health and safety rules, procedures and practices. NO SMOKING signs and the prohibition of the carrying of smoking materials in designated areas shall always be obeyed. A copy of the Safety Rules booklet is available on request from the ACSA Safety Department.

All the applicable requirements of the Occupational Health and Safety Act (1993) and Regulations and any amendments thereto, shall be met. Where the OHS Act prescribes certification of competency of persons performing certain tasks, proof of such certification shall be provided to the Service Manager.

The Contractor's Workmen's Compensation fees must be up to date. A copy of the Contractor's WCA registration shall be produced on request.

The following areas in the company are declared as "HOT WORKS PERMIT" areas:

All airside areas

All basement areas

All areas accessible to the public

All enclosed areas

The terminal building

Any process in the above-mentioned areas involving open flames, sparks, or heat shall be authorised by the issue of a permit to work - obtainable from the ACSA Safety department. Any work done under the protection of a permit to work shall be in strict compliance with every prescription regarding the permit.

Safety equipment shall be used where applicable (e.g. safety, goggles, boots, harness, etc.) The Contractor, at his/her own expense shall provide such equipment, for his/her employees. The Contractor shall apply the necessary discipline and control to ensure compliance by his workers.

All Contractors must ensure that his/her employees are familiar with the existing emergency procedures and must co-operate in any drills or exercises, which might be held. Emergency / fire equipment and extinguishers shall not be obstructed at any time

No person shall perform an unsafe / unhygienic act or operation whilst on Company premises.

No unsafe/dangerous equipment or tools may be brought onto or used on Company premises. The Company reserves the right to inspect all equipment/tools at any time and to prevent/prohibit their use, without any low service damages to the Company and without affecting the terms of the Contract in any way.

The Company reserves the right to act in any way to ensure the safety/security of any persons, equipment or goods on its premises and will not be liable for any costs or loss evoked by the action. This includes the right to search all vehicles and persons entering, leaving or on the premises and to inspect any parcel, package, handbag and pockets. Persons who are not willing to permit such searches may not bring any such items or vehicles onto the premises.

The Contractor shall maintain good housekeeping standards in the area where he is working for the duration of the contract.

At no time, must the Contractor interfere with, or put at risk, the functionality of any Sprinklers and/or fire prevention system. Care must also be taken to prevent fire hazards.

The Contractor is required to issue all staff with standard uniforms. This shall as a minimum include steel-tipped safety shoes/boots, overalls (clearly marked with Contractor's company logo) and numbered reflective jackets (also clearly marked with Contractor's company logo, the team members unique personnel number in a font size to be instructed by the Service Manager). All costs relating to uniforms shall be for the Contractor's account.

Cell phones and two-way radios

Use of cell phones on airside is **not** permitted unless the user is in possession of an appropriate Airport permit for the device. Cell phone permit issuing authority lies with the ACSA Security department.

The Contractor will **not** be allowed to use two-way radios at the Airport unless these radios are of the type, model and frequency range as approved by the ACSA IT department.

Protection of the public

The Contractor shall take special care in order not to harm or endanger the public in any way. Work shall be sufficiently hoarded and guarded to safeguard children and the general public from injury relating to machinery, work or other.

Barricades and lighting

Where hoarding, barricades or lighting is required in the execution of the Works, the Contractor shall provide same at his/her own expense. Hoarding, barricades and lighting shall comply with industry

accepted norms and standards and may not be used for purposes of advertising or any other purpose than safeguarding the Works.

Enterprise and Supplier Development Initiatives

It is a requirement of this project that the successful tenderer enters into a contract (either through partnership, joint ventures or sub-contractors) with Targeted Enterprise(s) as defined in the Contract Data to perform a minimum of Thirty percent (30%) of the tendered contract value.

Tenderers must state transformation deliverables that are both achievable and measurable as the successful tenderer will be required to issue comprehensive monthly reports in response to this tender requirement. The monthly report will be assessed by ACSA's Internal Transformation Committee, which is accountable for implementation of ACSA's Transformation initiatives.

C3.2.1 Definition of a Targeted Enterprise

A registered built environment professional firm contracted (either by Joint Venture, partnership or sub-contracting) by the tenderer to perform a specified percentage of work stated in the Contract Data under the guidance of the tenderer and which complies with the following:

- a) does not share equity holding with the tenderer; and
- b) is registered in terms of the Company's Act, 2008 (Act No. 71 of 2008) or Close Corporation Act, 1984 (Act No. 69 of 1984); and
- c) is registered with the South African Revenue Service; and
- d) is at least an Exempted Micro Enterprise (EME) with a B-BBEE Status of "Level One Contributor", as defined in the Amended Codes of Good Practice for measuring Broad-based Black Economic Empowerment (published in Government Gazette No. 36928 on 11 October 2013) or?
- e) is at least a Qualifying Small Enterprise (QSE) with a B-BBEE Status of "Level One Contributor", as defined in the Amended Codes of Good Practice for measuring Broad-based Black Economic Empowerment (published in Government Gazette No. 36928 on 11 October 2013).
- f) has entered into a written relationship agreement of co-operation and assistance with the tenderer for the duration of the contract.

C3.2.2 Participation of Targeted Enterprise(s)

The involvement of Targeted Enterprise(s) in the project management, manufacturing and testing is a mechanism to broaden the economic share of the national spend on engineering services and a means to hasten and improve the transfer of technical skills.

The percentage specified for Targeted Enterprise shall be applicable to the management, manufacturing and testing aspects of the project.

C3.2.3 Transformation monthly reporting

The tenderer shall report monthly and provide the following documents:

- The skill development or transferred during the month in question and
- The progress of the targeted enterprises skill development.
- Proof of payment to the target enterprise

C3.2.4 Sanctions for non-compliance with the transformation proposal

In the event that the tenderer does not meet the specified target of work value to the Targeted Enterprise, ACSA shall levy a low service damages. The low service damages payable is 50% of the value by which the cumulative value of the payments to the Targeted Enterprise fails to meet the specified percentage. The Targeted Enterprise(s) shall not be allowed to sub-contract any work that forms part of the specified participation percentage.

ANNEXES to C3 (Service information)

Title	Annex number	Applicable or N/A
Schedule of Equipment	Annex A	Applicable
Equipment commissioning dates	Annex B	Applicable
Equipment life span	Annex C	Applicable
Site information	Annex D	Applicable
Risk assessment	Annex E	Applicable
Previous completed PMs	Annex F	Applicable
Root cause analysis	Annex G	Applicable
Estimated times for breakdowns/faults	Annex H	Applicable
Service Level Agreement	Annex I	Applicable
OHS Act Appointment by Contractor	Annex J	Applicable
Minimum Maintenance Programme	Annex K	Applicable
Environmental Terms and Conditions	Annex L	Applicable
Maintenance of Passenger loading Bridges Spares List	Annex M	Applicable
ACSA maintenance procedure for Passenger loading Bridges - D080 029M	Annex N	Applicable
Passenger loading bridges – standard operating procedure	Annex O	Applicable
Maintenance of Passenger Loading Bridges – Electrical lockout procedure	Annex P	Applicable
O.R. Tambo International Airport – operating instruction for PLBs	Annex Q	Applicable
Passenger Loading Bridges - Fire Emergency procedure	Annex R	Applicable
IMCC procedure	Annex S	Applicable
Internal and external factors outside the contractor's control	Annex T	Applicable
ACSA Mechanical Standardised Minimum: legal requirements and minimum competency requirements	Annex U	Applicable
ACSA Inventory management procedure	Annex V	Applicable
Guarantees and warranties to be maintained	Annex W	N/A

ANNEX A**SCHEDULE OF EQUIPMENT**

Item	Item Description				Location
	Passenger Loading Bridges Number	Manufacturer	Make	Model	
A4	A	JBT-Aerotech-Jetway	Apron Drive	AT3-52/100-125R, SN32573	Alpha Apron
	B	JBT-Aerotech-Jetway	Apron Drive	AT3-58/116-123R, SN32578	Alpha Apron
A5		JBT-Aerotech-Jetway	Apron Drive	AT3-58/116-125R, SN32579	Alpha Apron
A6	A	JBT-Aerotech-Jetway	Apron Drive	AT3-47/85-125R, SN32567	Alpha Apron
	B	JBT-Aerotech-Jetway	Apron Drive	AT3-52/100-125R, SN32574	Alpha Apron
A7		JBT-Aerotech-Jetway	Apron Drive	AT3-52/100-125R, SN32575	Alpha Apron
A8	A	JBT-Aerotech-Jetway	Apron Drive	AT3-47/185-125R, SN32568	Alpha Apron
	B	JBT-Aerotech-Jetway	Apron Drive	AT3-52/100-125R, SN32576	Alpha Apron

A9		JBT-Aerotech-Jetway	Apron Drive	AT3-47/85-125R, SN32569	Alpha Apron
A10		JBT-Aerotech-Jetway	Apron Drive	AT3-47/85-125R, SN32570	Alpha Apron
A11		JBT-Aerotech-Jetway	Apron Drive	AT3-52/100-125R, SN32570	Alpha Apron
A12		JBT-Aerotech-Jetway	Apron Drive	AT3-47/85-125R, SN32571	Alpha Apron
A13		JBT-Aerotech-Jetway	Apron Drive	AT3-47/85-125R, SN32572	Alpha Apron

ANNEX B**Equipment Commissioning Dates**

	A13	A12	A11	A10	A9	A8A/B	A7	A6A/B	A5	A4A/B
Mar-15		17-Mar								
Apr-15	24-Apr									
May-15			22-May							
Jun-15				03-Jul						
Jul-15					30-Jul					
Aug-15										
Sep-15						23-Sep				
Oct-15									22-Oct	
Nov-15										
Dec-15										10-Dec
Jan-16										
Feb-16							04-Feb			
Mar-16								31-Mar		
Apr-16										
May-16										
Jun-16										

ANNEX C**Equipment Life Span**

Passenger Loading Bridges Number		Location	Life Span
A4	A	Alpha Apron	20 years
	B	Alpha Apron	20 years
A5		Alpha Apron	20 years
A6	A	Alpha Apron	20 years
	B	Alpha Apron	20 years
A7		Alpha Apron	20 years
A8	A	Alpha Apron	20 years
	B	Alpha Apron	20 years
A9		Alpha Apron	20 years
A10		Alpha Apron	20 years
A11		Alpha Apron	20 years
A12		Alpha Apron	20 years
A13		Alpha Apron	20 years

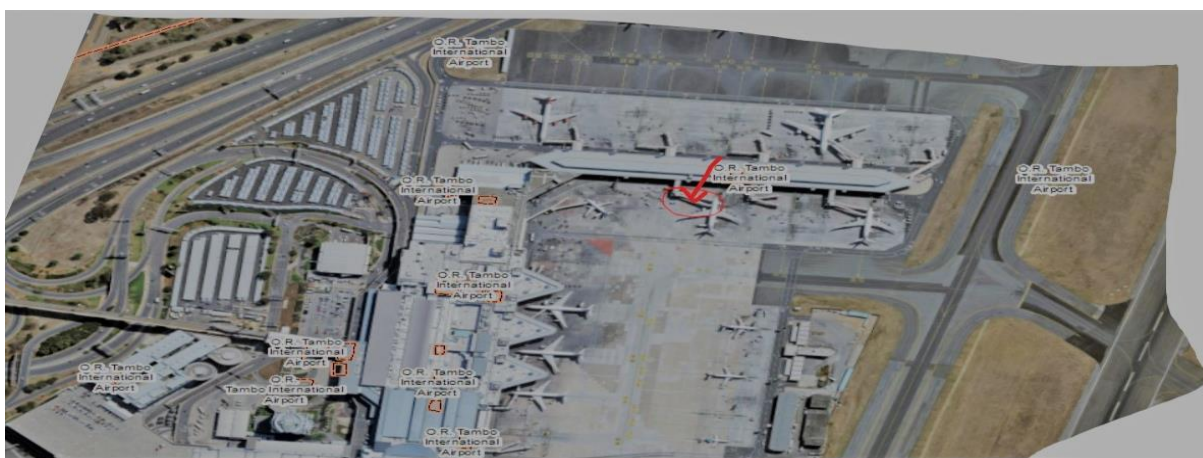


ANNEX D**Site Information****Description**

The services are situated on the airside of O. R. Tambo International Airport, the services taking place on the aprons within the boundary limits of the O. R. Tambo International Airport.

General Site Conditions

Temperature (Min - Max)	6°C to 40°C
Relative Humidity	15% to 60%
Wind	28m/s
Height above Sea Level	1,680 m
Slope (Existing/Modified)	Level
Seismic	N/A



ANNEX E**Risk assessment****OHS Risks**

#	Department	Tenant / Sub-department	Activity / Task / Service	Risk Name	Risk Description	Control Measure Name	Control Measure Description
1	Operations: M&E	Mechanical	Maintenance of PLBs	Occupational injuries	Working on heights	Fall protection plan	Fall arrest system (safety harness used for working on height above 2 meter).
2	Operations: M&E	Mechanical	Maintenance of PLBs	Fire hazard, fatalities	Combustion due hydraulic oil heating up	SWP	Remove all flammable material (papers, plastic etc.) around the oil tank area
3	Operations: M&E	Mechanical	Maintenance of PLBs	Injuries, fatalities.	Oil spillage	Procedure	ARFF department on standby if required. Contractor to have a spill containment kit to contain the spill, while ARFF is contacted through the IMCC.
4	Operations: M&E	Mechanical	Maintenance of PLBs	Occupational injury	Flying Objects	Procedure	Eye protection must be worn (Wear of Safety Glasses). Record of receiving PPE is to be kept on file,
5	Operations: M&E	Mechanical	Maintenance of PLBs	Fire hazard, injuries, fatalities.	Hot work conducted such as grinding, welding	Procedure	Hot work permit be issued prior commencement of work. Fire equipment to be serviceable.
6	Operations: M&E	Mechanical	Maintenance of PLBs	Occupational injury	Tripping Hazard	Procedure	Demarcate Working Area
7	Operations: M&E	Mechanical	Maintenance of PLBs	Injury due to Unsafe lifting equipment	Scissor lift not safe	Annual load test	Annual load test
8	Operations: M&E	Mechanical	Maintenance of PLBs	Hearing loss	Noise generated from the aircraft	Training	Ear protection must be worn. Record of receiving PPE is to be kept on file Airside Induction Training is mandatory prior to receiving a permit to work at the airport. Refresher training is provided every 2 years thereafter.

9	Operations: M&E	Mechanical	Maintenance of PLBs	Aircraft damage, fatalities	persons and vehicle in the airside	Training	On the job training is performed after Airside Induction Training is received.
10	Operations: M&E	Mechanical	Maintenance of PLBs	Aircraft damage, fatalities	Moving Machinery	Training, Procedure	Airside Induction Training is mandatory prior to receiving a permit to work at the airport. Refresher training is provided every 2 years thereafter.
11	Operations: M&E	Mechanical	Maintenance of PLBs	Occupational injuries	Hand Injury	Training, Procedure	Hand protection must be worn (gloves). Record of receiving PPE is to be kept on file. Airside Induction Training is mandatory prior to receiving a permit to work at the airport. Refresher training is provided every 2 years thereafter.
12	Operations: M&E	Mechanical	Maintenance of PLBs	FOD injected by aircraft, property damage, injuries	Vehicle and tools on at Aprons	Procedure	Area Demarcation during work where applicable and All tools & demarcation to be removed after work
14	Operations: M&E	Mechanical	Transportation at Airside	Property damage, vehicle damage, injuries	Driving of vehicles at airside	SWP	AVOP training should be done by drivers with valid driver's license. Vehicles should be deemed serviceable or roadworthy by safety department.

Administrative Risks

Risk Number	Risk Description and Mitigations
1	Safety File not being 100% compliant or safety/environmental infringement could lead to the contractor being taken off site
2	Expired COIDA letter; contractor will be taken off site.
3	Insufficient resources on site to perform the work required roster; low service damages will be levied and failing rehabilitation, the contract will be terminated as specified in this contract.
4	Failure to annually present a compliant Tax Clearance Certificate which is considered a material breach of the conditions of this Contract

5	Not meeting set availability target; low service damages will be levied and failing rehabilitation, the contract will be terminated as specified in this contract
6	Not meeting set MTTR target; low service damages will be levied and failing rehabilitation, the contract will be terminated as specified in this contract.
7	Spares list not being updated could lead to extended equipment down times; low service damages will be levied, and failing rehabilitation, the contract will be terminated as specified in this contract.
8	Root cause analysis not performed could lead to repeated equipment failures; low service damages will be levied and failing rehabilitation, the contract will be terminated as specified in this contract
10	Failure to annually present compliant BEE certificate which is considered a material breach of the conditions of this Contract
11	Contract value being expended before contract expiry date; contract will be terminated
12	Contractor not giving documentation for work assessments and payment on time; Contractor will not be paid on time
13	Updated and compliant safety file regarding Covid 19 PPE and risk assessment, as per OHS and regulation. Low service damages will be levied, and failing rehabilitation, the contract will be terminated as specified in this contract
14	Any change in the law that is reinforced as per clause X2(Changes in the law)



ANNEX F**Previously completed P. Ms**



The list of preventative maintenance previously performed with activities on the Alpha Apron PLBs are listed below for the actual work orders, ACSA Integrated maintenance centre can be contacted to issue or, the below link can also be used to access these records:

https://airports-my.sharepoint.com/:f:/r/personal/busisiwe_mthimunya_airports_co_za/Documents/Lebogang/OLD?csf=1&web=1&e=Voaky6

	A13	A12	A11	A10	A9	A8A/B	A7	A6A/B	A5	A4A/B
Year 2016										
Quarterly maintenance	342454	342454; 386979	361244	367966; 370047	374438	352077/80; 386977/8	342441; 379484	354442/3; 386641/39	356742	367985/6
Bi- annual maintenance	375232	323271	324712	323277			361091	370951/1522		342452/0
Annual Maintenance				354595	356742	369555/844			375231	384443/4
Year 2017										
Quarterly maintenance	394649; 428351	448631	400441;4 34164	440194	415825; 445566	451386/7	448668	423545/6; 462068/9	393875; 428961	440708/9
Bi- annual maintenance	445576	433390	451394	459908	394660	420420/1	529590	440719/20		421878/9
Annual Maintenance		371492		427826	428348	434157/8	398590		446288	461206/9
Year 2018										
Quarterly maintenance	467671; 511034	502555; 534013	478823; 519121	491391	498561; 529511	536769/70	501392; 528226	541031/2	467689	489519/20 ; 524792/3
Bi- annual maintenance	526215	517256	535656	541031/2	469065	522289/90	520124	524129/30	496222	505894
Annual Maintenance	478876	478901	5503120	505874	511929		478873	489514/5	534013	543831/30
Year 2019										
Quarterly maintenance	547763; 589018	627431	601655; 555602	562502; 606342	619611; 570373	576803/4;6 27428/9	580416; 6300073	587078/9; 637849/8	551568	565525/4; 615105/6
Bi- annual maintenance	589018	601675	627441	637837	550624	605346/7	605354	609181/2	571773	588386/4
Annual Maintenance	568180	555602; 576791	576805	585225	596114		559336	564232/4		637888/91
Year 2020										
Quarterly maintenance	642074		647133	659648			693834	693835/6	693825	662256/7
Bi- annual maintenance					642082					638124/6
Annual Maintenance		647119; 64733				647116/7	648963	659662/3		

ANNEX G**Root cause analysis**

Root cause analysis must be done for each failure and the form is per below must be handed over after closing any works.

ORTIA ME Root Cause Analysis Sheet								
Function failure (Which function was no longer execute) The bridge could not drive due to torn wheel.		Alpha 12 passenger loading bridge was not moving due to wheel puncher		Date: 2 December 18	Time of incident:	Reported by/Operator: MCS. Tsholele		
Asset class: AIRBRIDGE - APRON DRIVE Dept: Mech		Asset Description: ALB A12		Total downtime: 26 hours		Warning signs before the breakdown: NO WARNING SIGNS		
Repaired by: E. Opperman		Repair time: 3 hrs		Waiting time: 22-23hrs		Sketch the working principles and the failure mode (Event which caused functional failure) Include pictures of the brackets.77 in position		
Description of fault finding and repair (what was done to fix the machine/equipment and start operations) The wheel rubber tore off.				 				
Part/s/component/s replaced: 1. Bearings 2. Wheel		Work order/Work Request WO 542949		Failure mode (Event which caused functional failure) Torn wheel rubber				
Why1 Was rubber torn 1. Shear forces	Why2 Shear force 1. Driven over an object 2. Driven with high speed	Why3 out of life expectancy/age was reached 1. Rushing to dock the A/C	Why4 Replacement cycle/not replaced in cycle 1. Operator not at the loading bridge in time	Why5	Counter measures: 1. Operation's procedure to be reinforced 2. wheel inspections to be included in the preventive maintenance	Category <input checked="" type="checkbox"/> Man <input checked="" type="checkbox"/> Machine <input type="checkbox"/> Method <input type="checkbox"/> Material <input type="checkbox"/> Environment	Who 	Date complete

ORTIA ME Root Cause Analysis Sheet								
Function failure (Which Function was no longer execute) Passenger loading bridge cannot extend or retract			Alpha 32 passenger loading bridge was not moving due to wheel puncher			Date: Monday, 20 May 2019	Time of incident: 09:00	Reported by/Operator: SAC / Lennora
Asset class: AIRBRIDGE - APRON DRIVE		Asset Description: ALB A32B		Total downtime: 11 Days		Warning signs before the breakdown: ALB struggles to move and is shuffling forward and backwards.		
Dept: Mech		Repair time: 1.4 hrs		Waiting time: 100 Days		Sketch the working principles and the failure mode (Event which caused functional failure)		
Repaired by: M. Lennora								
Description of fault finding and repair (what was done to fix the machine/equipment and start operations) Steel wire rope was replaced, set new limits and guide bearings was adjusted.								
Part/s/component/s replaced: 1. Steel wire rope 2. Bearing roller adjustment			Work order/Work Request: WOB A03955			Failure mode (Event which caused functional failure) Steel wire rope damaged		
Why1: Note the steel wire rope damaged (reason of cable encounter)	Why2: Cable Tension (reason of bearings between tunnels)	Why3: Out of the expectancy (age was stretched visual inspection to be done prior to use)	Why4: Replacement cycle (not replaced in cycle) bearing roller adjustments	Why5:	Counter measures: 1. Operation's procedure to be followed 2. Steel wire rope tension to be included in inspections 3. Keep spare steel wire rope in stock	Category: <input checked="" type="checkbox"/> Man <input checked="" type="checkbox"/> Machine <input type="checkbox"/> Method <input type="checkbox"/> Material <input type="checkbox"/> Environment	Who:	Date complete:

ORTIA ME Root Cause Analysis Sheet								
Function failure (Which function was no longer execute) The handrail was not turning/moving			Bridge had an auto level failure. Cylinder were leaking internally			Date: 09/06/2019	Time of incident: 16h30	Reported by/Operator: SAC
Asset class: AIRBRIDGE - APRON DRIVE		Asset Description: ALB A33		Total downtime: 240h hours		Warning signs before the breakdown: Auto level failure		
Dept: Mech		Repair time: complete 08-10-2019		Waiting time: 2150 hrs		Sketch the working principles and the failure mode (Event which caused functional failure) Include pictures of the brackets 77 in position		
Repaired by: E. Opperman								
Description of fault finding and repair (what was done to fix the machine/equipment and start operations) Hyd cylinders were leaking internally								
Part/s/component/s replaced: Hyd cylinders repaired, flush hyd system, new hyd filter			Work order/Work Request: WOB D00388			Failure mode (Event which caused functional failure) Hyd cylinders leaking through		
Why1: did it lower by itself? 1. Internal seals were leaking through	Why2: seals collapse 1. Hydraulic seals collapse	Why3:	Why4:	Why5:	Counter measures: 1. Do more regular test on bridge cylinders	Category: <input checked="" type="checkbox"/> Man <input checked="" type="checkbox"/> Machine <input type="checkbox"/> Method <input type="checkbox"/> Material <input type="checkbox"/> Environment	Who:	Date complete:



ANNEX H**Estimated times for breakdowns/faults**

Item #	Call description	Estimated time to repair (hrs.) from the ACSA system as per Annexure H for information only
1	Auto Level Fault	1.2
2	Damaged staircase ladder	2
3	Damaged cable	720
4	UPS battery fault	2
5	Damaged GPU cable bracket	1.4
6	GPU hoist fault	0.8
7	GPU cable down	0.71
8	PLB not parked	0.5
9	Hoop switch fault	0.5
10	Slope limit fault	0.33
11	Service door not closed	0.36
12	Service door window broken	2
13	Swing Limit fault	1.54
14	Faulty safety shoe	0.5
15	Card reader faulty	1.1
16	Power Related faults	2
17	GPU power related fault	0.06
18	Glass broken	1.66
19	Docking / comms	0.5
20	Aircraft wrong stop	0.2
21	Emergency stop activated	0.4
22	Inverter fault	0.6
23	Ignition switch fault	1
24	Air-condition unit fault	0.4
25	Canopy limit fault	0.8
26	Height sensor fault	1.35
27	Camera frozen	0.45

28	Damaged Hydraulic cylinder	192
29	Computer fault	0.5
30	Damaged teel cable/rope	5
31	Communication cables faulty	4
32	Dirty fan	0.7
33	Column faulty	0.6
34	Driver guidance screen not working	2.5
35	Canopy rope damaged	1.8
36	Canopy ribbon damaged	3
37	Loose power cables	4
38	damaged cable wires	720
39	Camera and network cable damage	6
40	ultrasonic sensor	2.5
41	circuit breaker damaged	1.5
42	power supply damaged	1.2
43	robot buttons broken	1.8
44	control board damaged	5
45	stabilizer motor damaged	2
46	hydraulic fluid is low	1.2
47	hydraulic power coupling damaged	2.3
48	oil dirty	2.7
49	Filter blocked	2
50	Hose leaking	3
51	No flow	6
52	Check valve faulty	3
53	No pressure/low pressure	5
54	Damaged check valves	3
55	missing floods lights	1.0
56	damaged power pack	336
57	pump failure	4
58	Pump seals worn	3
59	Pump vibration	3

60	Pump over heating	3.5
61	Bearings are broken	3
62	pump motor trip	5
63	Stuck curtain inside Rotunda	8
64	Damaged collusion sensors	2
65	Damaged ignition switch	1.5
66	Damaged slope limit	2
67	Safety shoe worn out	2.8
68	broken bumper limit head spring	1.4
69	safety shoe cable damaged	2
70	Door lock broken	1.8
71	lock nut sensor	2.4
72	noisecon damaged	
73	Springs collapsed	2
74	Castor wheels damaged	5
75	Aircon temperature check	1.5
76	Stuck on the aircraft or parking	2
77	Card reader override	1
78	Bumper limit faulty	2
79	Canopy cushion faulty	3.5
80	Canopy guide strap	1.5
81	Canopy not extending	1.2
82	Canopy not retracting	1.2
83	E stop activated	0.45
84	Hydraulic system fault	5
85	Lights not working	0.8
86	Structural damage	336
87	Tunnel leaking	5
88	Other:	2

ANNEX I**Service Level Agreement****1. Performance objectives**

Normal airport operational hours shall be **from 04:00 to 24:00** for every day of the year but will be confirmed/amended by the Service Manager from time to time. Down-time of alpha apron loading bridges for routine maintenance shall be arranged with the Airport Management Centre three months in advance to suit airport operations. The Contractor must allow for sufficient after-hours work in order for scheduled work not to interfere with airport operations

Minimum Staffing Schedule

The Contractor must maintain the following minimum staff available at all times and should price accordingly but not limited to the listed resources:

Skill	Days per week	Hours
Site Manager/Technician	7	Mon-Fri (08:00-17:00) and whenever deemed necessary by the Employer
Artisan Mechanical	7	Mon-Fri (08:00-17:00) and whenever deemed necessary by the Employer

* The Contractor must maintain at all times the above **minimum** staff and should price accordingly but not limited to the listed resources.

The Contractor must have additional resources available to attend to lengthy breakdowns or breakdowns of a specialised nature.

It shall be the Contractor's responsibility to ensure that all relevant labour and safety legislation is adhered to in scheduling staff.

The Contractor shall schedule staff to complete the preventative maintenance schedule accordingly. The Tenderer must ensure that sufficient allowance for all these items is made for in his/her pricing in the Activity Schedule.

2. Availability, mean time before failure, mean time to repair and callout response times

The Contractor must comply with the following minimum system performance benchmarks:

The Period of review shall be Monthly.

ACSA has authority to give the contractor the call-out, the authority will be from both IMC and Service Manager

Service Level table

The following service levels are the minimum acceptable service levels for this contract.

Item	Benchmark*
Alpha loading bridges Overall System - Availability	Availability must be a minimum of 99.5% per month.
Alpha loading bridges Overall System - MTTR of less than	2 Hrs.
Alpha loading bridges Overall System – MTBF of greater than	48 Hrs.
% of planned maintenance completed per month	100%
Response time for call outs (after working hours, weekend and holidays)	60 minutes on land side and on the airside (The response time is calculated from the time the contractor receives a call/missed call/voice mail etc. from IMC and sometimes from service manager)
Closure of Planned Maintenance (PM) Work Orders (WO) (Planned by ACSA)	All PM WO shall be closed with 6 working days from date of issuing to contractor – (Issued by ACSA either by mail or manual collection)
Closure of Corrective Maintenance (CM) Work Orders (WO)	All CM WO shall be closed with 1 working day from date of issuing to contractor–(Issued by ACSA either by mail or manual collection)

The PMs' and work Orders' are not closed until all works have been correctly completed and the correct completed documents have been sent to both the IMC and the Service Manager.

** Availability, MTTR and MTBF as defined in the IMC procedure.

3. Emergency Response time

ACSA deems an emergency as a situation caused by unforeseen circumstance. This is only instances where:

- ❖ Delaying to source the required goods,
- ❖ Works or services will result in Loss of life or injury,
- ❖ Reputational harm,
- ❖ Financial losses,
- ❖ Legal consequences,
- ❖ Interruption of essential or
- ❖ Business services and
- ❖ Any other relevant consideration

Below are some of the emergencies identified but not limited to the below list and also the emergency response times:

Item Description	Response Time
In a case where the passenger loading bridge is lowered, Stuck, safety emergency devices activated.	30 minutes during normal working hours (The response time is calculated from the time the contractor receives a call/missed call/voice mail etc. from IMC and sometimes from service manager)

In a case where the passenger loading bridge is lowered, Stuck, safety emergency devices activated.	45 minutes after hours, weekend and holiday (The response time is calculated from the time the contractor receives a call/missed call/voice mail etc. from IMC and sometimes from service manager)
---	---

4. Guarantees

The defect free period is defined as that period following completion of the work where no defect directly associated with the Contractors workmanship is detected.

Defect free liability period – preventative maintenance	The defect free period will be no less than the interval between preventative maintenance intervals.
Defect free liability period – corrective or breakdown maintenance	The defect free period will be no less than 90 days.
Defect free liability period – project work	The defect free period will be no less than 12 months.

There are no current (the time of this bid) warranties and guarantees on the infrastructure to be maintained by the contractor.

5. Assessments and Reviews

- Monthly assessment/review shall be done according to this NEC contract.
- Safety issues and file reviewed quarterly or as per Safety department frequency.
- Contract shall be Audited and Assessed the from time to time.
- The contractor will be assessed and scored quarterly also through the ACSA supplier development system or any other ACSA system.

6. Low service damages

Notification of Low service damages

The Service Manager will notify the contractor in writing of any Low service damages.

The Service Manager will also notify the contractor of any claims directed and incurred by ACSA as a result of the contractor failure of duties, **this will be for the account of the Contractor**.

The sources of the information shall be all reports and Audit reports which the infrastructure is subjected to(e.g. any authorised ACSA employees and any internal and external audits).

ACSA must notify the contractor in writing of its intention to claim a Low service damages within 30 days of an event or ACSA will lose its right to claim the Low service damages. Should ACSA not claim a Low service damages for an event it shall not be interpreted that the level of performance is acceptable or that ACSA shall not be entitled to claim Low service damages for similar future events. Under no circumstances shall a Low service damages be regarded as the only action ACSA may take against the Contractor or the only amount it may claim from the Contractor.

Low service damages tables

Progressive Punitive low service agreement which are entirely the contractor's fault shall be applied as below:

Item No.	Achieved Overall System Availability per Month	Low service damages amount
1	99.5%	100% Full fixed cost billed, minus any other low service damages included in this contract.
2	99.499% - 97.00%	10% reduction of monthly maintenance & inspection costs minus any other low service damages included in this contract.
3	96.99% - 95.00%	15% reduction of monthly maintenance & inspection costs minus any other low service damages included in this contract.
4	94.99% - 93.00%	20% reduction of monthly maintenance & inspection costs minus any other low service damages included in this contract.
5	92.99% - 91.00%	25% reduction of monthly maintenance & inspection costs minus any other low service damages included in this contract.

***Any availability less than 91% for six consecutive months (which is the entirely the contractor's fault) will lead to contract termination.**

Item Description	Low service damages amount
Not meeting system MTTR of less than 2Hrs.	R10 000/month
Not meet system MTBF of greater than 48 Hrs	R10 000/month
Not maintaining the required minimum on-site staff requirements.	R2 000.00/position/day
Noncompliance to the Response time for call outs (after working hours, weekend, and holidays) as stipulated in the Service Level and this contract.	R2 000.00/event
Noncompliance of emergency response times as stipulated in the Service Level and this contract.	R2 000.00/event
Occupational health and safety act 85 of 1993 (Non-compliance with the OHS Act and its associated regulations (for example: leaving moving machinery exposed)	R2 000.00/event
Less than 100% of planned maintenance (PMs) completed per month (unless the delay in repair was agreed to by the Service Manager or his/her duly authorized representative or unless the required spares are not available to complete the work). <i>Note: The PMs' and Work Orders' are not closed until all works have been correctly completed and the correct completed documents have been sent to both the IMC and the Service Manage.</i>	R4 000/month
Not turning PO into completed works / completion certificate on agreed times lines as stated in Risk register	R4 000.00 / per PO / month
Other occupational health and safety act 85 of 1993 which are criminal offences according to the OHS act	Termination
3 Months Consecutive (monthly on contract period) occupational health and safety act 85 of 1993 of the same offence/class	Termination

Discretionary annual contractor's performance review/assessment will be performed to consider the renewal of contract. Should the contractor's performance deemed below satisfactory the contract will not be renewed upon contract anniversary, therefore the contract will be terminated.

Item Description	Response Time	
In a case where the passenger loading bridge is lowered, Stuck, safety emergency devices activated.	30 minutes during normal	R1 000.00/event
In a case where the passenger loading bridge is lowered, Stuck, safety emergency devices activated.	45 minutes after hours	R1 000.00/event

Continuous Improvement Program and the Computerized Maintenance Management System

It is hereby required that the Contractor ensures that a continuous improvement program is in place. For example, the criteria below may be used but not only limited to the items mentioned below.

1. An improvement in the availability of systems
2. An improvement on the minimization of spares holding (for example by increasing Mean Time to Failure of components)
3. Etc.

As mentioned above this list is not comprehensive and it is only used for illustrative purposes. Upon implementation of the contract the Employer and the Contractor shall agree targets for the continuous improvement program.

It is important to note that continuous improvement will only apply to those items that meet minimum benchmarks. Continuous improvement initiatives shall be reviewed every quarter or when deemed necessary by the Employer or the Contractor.

The Contractor shall take all reasonable actions to ensure that they facilitate successful implementation and execution of the CMMS. The Contractor shall before each anniversary date of the Contract investigate available CMMS data and report if savings can be achieved on the Contract for the next year. This may also include savings on the Contract monthly maintenance amount.

7. Internal and external factors

A list of some of the internal and external factors which may affect equipment SLAs / availability and are beyond the contractor's control are listed in **Annex T**. In such an event the contractor will



not pay for low services damages which were caused by factors which were proven to be beyond the contractor's control.

MAINTENANCE RECORD SHEETS

When maintenance is performed, record sheets must be completed and signed off by both the Technician and an ACSA representative.

These record sheets must be stored for the duration of the contract and should be available for inspection at any time. **The lack of complete history files will result in immediate cancellation of the contract.**

All record sheets, job cards, history reports etc. will stay the property of ACSA and should be available on request. At the end of the contract period a complete set of documentation must be handed over to ACSA.

The contractor shall further provide copies of these record sheets to the ACSA contract manager by the fifth day of every month. **No money will be paid out if record sheets are not handed in.**



ANNEX J

**OCCUPATIONAL HEALTH AND SAFETY AGREEMENT
IN TERMS OF SECTION 37(2) OF THE OCCUPATIONAL HEALTH & SAFETY ACT (ACT 85 OF
1993) & CONSTRUCTION REGULATION 5.1(k)**

This form is in C1.3 in this contract and must be filled in by the contractor

ANNEX K**Minimum Maintenance Programme**

The Tenderer shall include a suggested maintenance programme that must attempt to cover all requirements under this contract. The below list should be used as a minimum. The responsibility lies with the contractor in ensuring compliance to OEM instructions

Item number	Description	Frequency
1	Daily PLB inspections (Contractor inspection sheet)	Daily (By contractor)
2	Lighting inside the tunnel to be checked and failed lights should be replaced	Weekly (By contractor)
3	PLC health checks and checking that activities are logged accordingly to happen.	Monthly (By contractor)
4	IMC interface health check to happen with the BMS contractor	Monthly (By contractor)
5	Permit reader health check to be done.	Monthly (By contractor)
6	Test for back-up power.	Monthly (By ACSA Electrical Maintenance)
7	Cleaning of the bridge where the rollers of the telescopic sections move.	Monthly (By contractor)
8	Cleaning of glazing must also be part of scope as may require scaffolding on the outside or skyjack.	Monthly (By contractor)
9	Check for damaged ceiling panels and replace the damaged ceiling panels	Monthly (By contractor)
10		
11	Drive the bridge to all limits to detect any operational problems	Quarterly (By contractor)
12	Manipulate the following switches by hand to ensure they are working correctly. <ul style="list-style-type: none"> • Rotunda rotation • Slope limits 	Quarterly (By contractor)
4	Check Cab rotation <ul style="list-style-type: none"> • Rotate the cab full right and left, operation be smooth. 	Quarterly (By contractor)
5	Check Canopy closure operation NOTE: When checking the canopy do not place the place the bridge against an aircraft <ul style="list-style-type: none"> • Left side raise – The motor will stop running when the canopy is full up • Right side raise – The motor will stop running when the canopy is full up 	Quarterly (By contractor)

	<ul style="list-style-type: none"> • Lower the canopy either side, a few centimetres. The canopy down message will appear and the bridge will not drive forward. • Left side down - extend the curtain until the clutch is engaged (indicated by a clicking sound) • Right side down - extend the curtain until the clutch is engaged (indicated by a clicking sound) 	
6	Horizontal Drive <ul style="list-style-type: none"> • Drive the bridge full forward- the slow down circuit will activate about 1 metre before full extend position is reached, and the bridge will stop before reaching the mechanical stops • Drive the bridge in full reverse – the slow down circuit will activate about 1 metre before full retract is reached and the bridge will stop before reaching the mechanical stops • Ensure that the travel warning bell is ringing whenever the bridge is moving • Rotate the horizontal drive to drive to its left and right limits. Drive unit should stop at the present limits. 	Quarterly (By contractor)
7	Vertical drive <ul style="list-style-type: none"> • Raise and lower the bridge - operation should be smooth • Raise and lower the bridge to its lower and upper limits. The bridge should stop at the present heights • Inspect vertical lift column chain coupling 	Quarterly (By contractor)
8	Vertical lift column fault limit switches NOTE: Check only one switch at a time <ul style="list-style-type: none"> • Remove limit switch and manually trip while a second person attempts to raise or lower the bridge. If the bridge rises or lowers, limit switch must be replaced • Repeat this procedure on the limit switch 	Quarterly (By contract)
9	Inspect the operator console <ul style="list-style-type: none"> • Check for moisture, rust and debris • Check all printed circuit boards, wire connection and other components for secure mounting • Check for any evidence of arcing pitting signalling loose connections • Check indicator lights, meters and wiring in general 	Quarterly (By contractor)
10	Check rotunda access panel and hold down clamps for secure mounting	Quarterly (By contractor)
11	Observe the cable carrier system while retracting and extending the bridge to ensure the system does not bind	Quarterly (By contractor)

12	Check rotunda access panel and hold down clamps for secure mounting	Quarterly (By contractor)
13	Check cab side curtains for tightness and adjust if necessary	Quarterly (By contractor)
14	Check the following electrical cables for deteriorating and general condition <ul style="list-style-type: none"> Exposed cables under tunnels Exposed cables under cab Cables from Rotunda to tunnel A 	Quarterly (By contractor)
15	Check equalising cable and adjust if necessary <ul style="list-style-type: none"> Check cable clamps on clamping ring make sure clamps and cables are secured 	Quarterly (By contractor)
16	Auto level <ul style="list-style-type: none"> Check set screws holding the wheel to limit switch they should tight Check wheel for wear, flat spots, shiny spots and deterioration. Replace if necessary Turn the wheel by hand in both directions ensuring freedom of operating and positive return to neutral Check locknut on auto level arm are tight NOTE: turning the wheel approximately 15 degrees in either direction will engage the limit switch	Quarterly (By contractor)
17	<ul style="list-style-type: none"> Check the arm, it should move freely in both directions Check the auto level travel limits with the arm extended and the bridge in "AUTO LEVEL" mode Turn and hold the wheel by hand by hand stimulate the aircraft rising, about 4 seconds will pass before the warning light and bell come on. Reset the auto-levelling system and check the down travel by turning and holding the wheel in the opposite direction. About 4 seconds will pass before the warning light and bell come on. 	Quarterly (By contractor)
18	Lubrication Vertical column ball screw assembly through the oil	Quarterly (By Contractor)
19	Thoroughly wash bridge exterior	Quarterly (By contractor)
20	Check tyre for general condition	Quarterly (By contractor)
21	Raise and lower the bridge – operation should be smooth Raise and lower the bridge to upper and lower limits. The bridge should stop at the present heights	Quarterly (By contractor)
22	Remove the limit switch and manually tip while a second person attempts to raise or lower the bridge. If the bridge lowers and raises. The limit switch must be replaced	Quarterly (By contractor)

	Repeat procedure on the other hand.	
23	Check fire extinguisher is in place and serviced	Quarterly (By contractor)

Item	Description	Frequency
1	Drive the bridge to all limits to detect any operational problems	Semi-annually (By contractor)
2	Manipulate the following switches by hand to ensure they are working correctly. <ul style="list-style-type: none"> • Rotunda rotation • Slope limits 	Semi-annually (By contractor)
3	Check Cab rotation <ul style="list-style-type: none"> • Check the tie rods on top of the bubble for cracks in the threads • With an observer on the roof, watch the pivot bracket as the cab rotates, making sure that the rods do not bend near the pivot bracket. Pivot bracket must rotate freely. • Rotate the cab full right and left, operation be smooth. 	Semi-annually (By contractor)
4	Check Canopy closure operation NOTE: When checking the canopy do not place the place the bridge against an aircraft <ul style="list-style-type: none"> • Left side raise – The motor will stop running when the canopy is full up • Right side raise – The motor will stop running when the canopy is full up • Lower the canopy either side, a few centimetres. The canopy down message will appear and the bridge will not drive forward. • Left side down - extend the curtain until the clutch is engaged (indicated by a clicking sound) • Right side down - extend the curtain until the clutch is engaged (indicated by a clicking sound) 	Semi-annually (By contractor)
5	Horizontal Drive <ul style="list-style-type: none"> • Drive the bridge full forward- the slow down circuit will activate about 1 metre before full extend position is reached, and the bridge will stop before reaching the mechanical stops • Drive the bridge in full reverse – the slow down circuit will activate about 1 metre before full retract is reached and the bridge will stop before reaching the mechanical stops 	Semi-annually (By contractor)

	<ul style="list-style-type: none"> • Ensure that the travel warning bell is ringing whenever the bridge is moving • Rotate the horizontal drive to drive to its left and right limits. Drive unit should stop at the present limits. 	
6	Vertical drive <ul style="list-style-type: none"> • Raise and lower the bridge - operation should be smooth • Raise and lower the bridge to its lower and upper limits. The bridge should stop at the present heights • Inspect vertical lift column chain coupling 	Semi-annually (By contractor)
7	Vertical lift column fault limit switches NOTE: Check only one switch at a time <ul style="list-style-type: none"> • Remove limit switch and manually trip while a second person attempts to raise or lower the bridge. If the bridge rises or lowers, limit switch must be replaced • Repeat this procedure on the limit switch 	Semi-annually (By contractor)
8	Inspect the operator console <ul style="list-style-type: none"> • Check for moisture, rust and debris • Check all printed circuit boards, wire connection and other components for secure mounting • Check for any evidence of arcing pitting signalling loose connections • Check indicator lights, meters and wiring in general 	Semi-annually (By contractor)
9	Check rotunda access panel and hold down clamps for secure mounting	Semi-annually (By contractor)
10	Observe the cable carrier system while retracting and extending the bridge to ensure the system does not bind	Semi-annually (By contractor)
11	Check rotunda side curtains for tightness and adjust if necessary	Semi-annually (By contractor)
12	Check cab side curtains for tightness and adjust if necessary	Semi-annually (By contractor)
13	Check the following electrical cables for deteriorating and general condition <ul style="list-style-type: none"> • Exposed cables under tunnels • Exposed cables under cab • Cables from Rotunda to tunnel A 	Semi-annually (By contractor)
14	Check equalising cable and adjust if necessary Check cable clamps on clamping ring make sure clamps and cables are secured	Semi-annually (By contractor)
15	Auto level <ul style="list-style-type: none"> • Check set screws holding the wheel to limit switch they should tight • Check wheel for wear, flat spots, shiny spots and deterioration. Replace if necessary 	Semi-annually (By contractor)

	<ul style="list-style-type: none"> • Turn the wheel by hand in both directions ensuring freedom of operating and positive return to neutral • Check locknut on auto level arm are tight <p>NOTE: turning the wheel approximately 15 degrees in either direction will engage the limit switch</p>	
16	<ul style="list-style-type: none"> • Check the arm, it should move freely in both directions • Check the auto level travel limits with the arm extended and the bridge in "AUTO LEVEL" mode • Turn and hold the wheel by hand by hand stimulate the aircraft rising, about 4 seconds will pass before the warning light and bell come on. • Reset the auto-levelling system and check the down travel by turning and holding the wheel in the opposite direction. About 4 seconds will pass before the warning light and bell come on. 	Semi-annually (By contractor)
17	<p>Lubrication</p> <ul style="list-style-type: none"> • Vertical column ball screw assembly through the oil • Rotunda column and flange and sleeve bearing with lube • Bearing lift column with lube • Cab canopy mechanical parts with lube <ul style="list-style-type: none"> ○ Actuator pivot point ○ Lower actuator arm pivot point ○ Lower actuator arm bushings ○ Pivot block ○ Lower hinges • Wheel Carriage and swivel column <ul style="list-style-type: none"> ○ Drive chains with lube ○ Turret bearing with lube ○ Bushings and trunnion pin with lube • Cable lift arm hinges with lube • Cab rotation parts with lube spec <ul style="list-style-type: none"> ○ Drive chain ○ Sprocket shafts 	Semi-annually (By contractor)
18	After lubrication operate the bridge to all limits to distribute lubrication	Semi-annually (By contractor)
19	Check rotunda floor alignment	Semi-annually (By contractor)
20	Check drain sprouts in tunnel floor gutters. Make certain they are not clogged with debris.	Semi-annually (By contractor)
21	Check general conditions of tyres	Semi-annually (By contractor)
22	<p>Check the following weather seals for general condition</p> <ul style="list-style-type: none"> • Rotunda to building 	Semi-annually (By contractor)

	<ul style="list-style-type: none"> • Splice seals if necessary 	
23	Thoroughly wash the bridge exterior	Semi-annually (By contractor)
24	Inspect the exterior paint for chips, cracks and rust. Touch up if necessary.	Semi-annually (By contractor)
25	Check tunnel roller tracking and adjust if necessary	Semi-annually (By contractor)
26	Check all tunnel roller adjusting bolts for tightness	Semi-annually (By contractor)
27	Check the following mounting bolts for tightness <ul style="list-style-type: none"> • Horizontal drive • Vertical lift column • Landing 	Semi-annually (By contractor)

1	GPU cable hoists which are at the PLB's requirement for annual load testing by Lifting Machinery Inspector and issuing of a load test certificate	Annually (By contractor)
---	---	--------------------------

ANNEX L (Contractor to fill in)

ACSA SERVICE & MAINTENANCE CONTRACTORS
ENVIRONMENTAL TERMS AND CONDITIONS TO COMMENCE WORK - EMS 048

The following Environmental Terms and Conditions shall be strictly adhered to by all contractors when conducting works for the Employer. The Employer shall audit Contractor activities, products and services on an ad hoc basis to ensure compliance to these environmental conditions. Any pollution clean-up costs shall be borne by the Contractor.

ISSUE	REQUIREMENT
Environmental Policy	ACSA's (the Employer's) Environmental Policy shall be communicated, comprehended and implemented by all appointed Contractor staff.
Storm water, Soil and Groundwater Pollution	<ul style="list-style-type: none"> No solid or liquid material may be permitted to contaminate or potentially contaminate storm water, soil or groundwater resources. Any pollution that risks contamination of these resources must be cleaned-up immediately. Spills must be reported to the Employer immediately. Contractors shall supply their own suitable clean-up materials where required. Washing, maintenance and refuelling of equipment shall only be allowed in designated service areas on the Employer property. It is the Contractor's responsibility to determine the location of these areas. No leaking equipment or vehicles shall be permitted on the airport.
Air Pollution	<ul style="list-style-type: none"> Dust: Dust resulting from work activities that could cause a nuisance to employees or the public shall be kept to a minimum. Odours and emissions: All practical measures shall be taken to reduce unpleasant odours and emissions generated from work related activities. Fires: No open fires shall be permitted on site.
Noise Pollution	<ul style="list-style-type: none"> All reasonable measures shall be taken to minimize noise generated on site due to work operations. The Contractor shall comply with the applicable regulations regarding noise.
Waste Management	<ul style="list-style-type: none"> Waste shall be separated as general or hazardous waste. General and hazardous waste shall be disposed of appropriately at a permitted landfill site should recycling or re-use of waste not be feasible. Under no circumstances shall solid or liquid waste be dumped, buried or burnt. Contractors shall maintain a tidy, litter free environment always in their work area. Contractors must keep on file:

	<ol style="list-style-type: none"> 1. The name of the contracting waste company 2. Waste disposal site used 3. Monthly reports on quantities – separated into general, hazardous and recycled 4. Maintained file of all Waste Manifest Documents and Certificates of Safe Disposal 5. Copy of waste permit for disposal site <p>This information must be available during audits and inspections.</p>
Handling & Storage of Hazardous Chemical Substances (HCS)	<ul style="list-style-type: none"> • All HCS shall be clearly labelled, stored and handled in accordance to Materials Safety Data Sheets. • Materials Safety Data Sheets shall be stored with all HCS. • All spillages of HCS must be cleaned-up immediately and disposed of as hazardous waste. (HCS spillages must be reported to the Employer immediately). • All contractors shall be adequately informed with regards to the handling and storage of hazardous substances. • Contractors shall comply with all relevant national, regional and local legislation regarding the transport, storage, use and disposal of hazardous substances.
Water and Energy Consumption	the Employer promotes the conservation of water and energy resources. The Contractor shall identify and manage those work activities that may result in water and energy wastage.
Training & Awareness	The conditions outlined in this permit shall be communicated to all contractors and their employees prior to commencing works at the airport.

Low Service Damages

Low service damages shall be imposed by the Employer on Contractors who are found to be infringing these requirements and/or legislation. The Contractor shall be advised in writing of the nature of the infringement and the amount of the low service damages to be imposed. The Contractor shall take the necessary steps (e.g. training/remediation) to prevent a recurrence of the infringement and shall advise the Employer accordingly. The Contractor is also advised that the imposition of low service damages does not replace any legal proceedings the Council, authorities, landowners and/or members of the public may institute against the Contractor.

Low service damages shall be between R 200.00 and R 20,000.00, depending upon the severity of the infringement. The decision on how much low service damages to impose will be made by ACSA's (the Employer) Airport Environmental Management Representative in consultation with the Airport Manager or his/her designate and will be final. In addition to the low service damages, the Contractor shall be required to make good any damage caused due to the infringement at his/her own expense.



I, _____ (name & surname) of

_____ (company) agree to the
above conditions and acknowledge the Employer's right to impose low service damages should I or any
of my employees or sub-contractors fail to comply with these conditions.

Signed: _____ on this date: _____ (dd/mm/yyyy)

at: _____ (airport name).

ANNEX MMaintenance of Passenger loading Bridges Spares List

Bin Location	Spare Part Description	JBT part number	Max Qty
A01.1	Engine laser sensor kit	2965059.01	4
A02.1	Circuit Breaker Schneider OSMC32N3D16	3719262 CH	1
A02.2	Contacto r Schneider LCID40ABD	3726240 CH	2
A02.3	Contacto r Schneider LCID09BDC	3613730 CH	2
A02.4	Contacto r Schneider LCID12BDC	3726243 CH	2
A02.5	Contacto r Schneider LCID32BDC	2962182 CH	2
A02.6	Contacto r Schneider LRD22C		2
A02.7	Contacto r Eaton DILM 12-10		1
A03.1	Circuit breaker Eaton FAZ-DO, 5/2	3659021 CH	1
A03.2	Circuit breaker Schneider OSMC 65H1D10	2962183 CH	1
A03.3	Circuit breaker Schneider OSMC 32N1D16	3659018 CH	1
A03.4	Circuit breaker Schneider OSMC 65H3D20	2962180 CH	1
A03.5	Circuit breaker Schneider OSMC 32N1D20	3659019 CH	1
A03.6	Circuit breaker Schneider IC 65HD25A	4142641 CH	1
A03.7	Circuit breaker Schneider OSMC 65H3D32	2962182 CH	1
A03.8	Circuit breaker Schneider OSMC 65H3D40		2
A03.9	Circuit breaker Schneider NSC 100S60A	3649958 CH	1
A03.10	Circuit breaker Schneider NSC 100S100A	3727789 CH	1
A04.1	Aux Contact Schneider LADN 11C		2
A04.2	Aux Contact Schneider LADN 40	3726244 CH	1
A04.3	Aux Contact Schneider LADN 22C	3726243 CH	1
A04.4	Resistors 3W 1000 OHM	3623739	3
A04.5	Resistors brakes	4570480	1
A04.6	Joystick traction Dual	3705071	1

A04.7	Cable sensor 15m	EVM 019	2
A05.1	Relay Carlo Givazzi RG Solid state switch	3643395	2
A05.2	Ultra sonic sensor Pepperl + Fuchs UC 4000-L2-I-V-15	3729846	2
A05.3	Sensor Sick DL60-P111B Tunnel length	3713235	2
A05.4	Sensor Sick UM30-21411	3718248	2
A05.5	Proximity switch TelemechaniqueXS1 N18PC 410D f/door	3710789	2
A05.6	Proximity switch TelemechaniqueXS1 N18PP 349D	3720223	2
A06.1	Beckhoff PLC CX2100-004 + CX 2020-0121	3726236	2
A06.2	Beckhoff memory cards CX 2900-0030		13
A06.3	Ignition switch D10 key - 10250ED1083-Eaton	4141614	2
A07.1	Module Beckhoff input digital KL 1408		4
A07.2	Module Beckhoff output KL 2408		2
A07.3	Module Beckhoff KL 2612		1
A07.4	Module Beckhoff KL 2712		1
A07.5	Module Beckhoff KL 2722		2
A07.6	Module Beckhoff KL 3458		3
A07.7	Module Beckhoff KL 4424		1
A07.8	Module Beckhoff KL 9010		1
A07.9	Module Beckhoff KL 9190		1
A08.1	Potentiometer 632243-10 Rev B	3705081	1
A08.2	Potentiometer 632243-1 Rev B	3705080	3
A08.3	Bell 240v Federal signs	3642384	1
A08.4	Bell gong plate gray Federal signs	3613462	1
A09.1	Emergency stop Schneider ZBE 101+ ZBE 102		1
A09.2	Pushbutton blue Schneider ZBE101 + ZBE 102		1
A09.3	Pushbutton twist ZBB 101 -2 OFF hoist		1
A09.4	Pushbutton red Schneider ZBE 102		2
A09.5	Pushbutton UP/DOWN Schneider ZB4BW7A9	4140412CH	1

A09.6	Pushbutton Cab Schneider		1
A09.7	Contact Blocks Schneider ZB4BW0B53/ ZBE 101 - 2OFF		2
A09.8	Emergency stop Schneider ZB4 Twist		1
A09.9	Relay Schneider 14 pin glass RXM 24V	3706542 CH	1
A09.10	Contact blocks schneider ZB4BZ105 - NC/NO		1
A09.11	Contact blocks Eaton M22K01 - NC		1
A10.1	Pushbutton Green Schneider ZBE 101/ ZBE 102		1
A10.2	Buzzer 24v	3659844	2
A10.3	Fan 220 v	3702316 CH	1
A10.4	Switch lights 2 way DS 3201	3719082	1
A10.5	Telephone plug plates		4
A10.6	Ethernet switch HA-VIS e CON 2000		6
A10.7	Globes 12v - 20w -30 degree	3644512	10
A10.8	Day/ night Sensor Spectra LS 20		3
A11.01	Cab rollers	3676017	6
A11.02	Guide block rollers tunnel		2
A11.03	Pulley rollers Pins/ clips/clips		12
A11.04	Link chain 80 Double	3672936	9
A11.05	Link chain half 80 double		1
A12.01	Wire rope 78ft	7672784	1
A12.02	Wire rope 94ft	7672784	1
A12.03	Wire rope 105ft	7672784	1
A13.01	Wire rope 108ft	7672784	1
A13.02	Pulley wire rope	3612252	1
B01.1	Ceiling panels white 2m		30
B01.1	Ceiling panels securing black strip 2 m		30
B02.1	Door closer Sargent M310513-01	3691223	2
B02.2	Resistors inverters 250 ohm 225W	4140141	6
B03.1	Power supply Camera 12v - 2A		6
B03.2	Power supply Puls ML50.102 - 12V	3708724	1

B03.3	Power supply Meanwell SDR 240-24/Puls CS10.241-24V	3718287 CH	3
B04.1	Battery back up lights I320 STD DL	4080172	2
B04.2	Door latch I 555-626	3659081	1
B04.3	Door switch Eaton 10316H1028	4140220	4
B04.4	Magnetic door locks M32 12/24V	3728293	2
B05.1	Limit switch Honeywell LSQYPB2B325	4100211	2
B05.2	Limit switch arm Honeywell LSZ52C	4100046	3
B05.3	Limit switch arm Honeywell LSZ54	4100048	1
B05.4	Limit switch arm long Honeywell LSZ54N	4100071	2
B05.5	Limit switch Honeywell LSQYPB1A326	4100212	1
B05.6	Limit switch Honeywell LSQYMB2D324	4100210	1
B06.1	Bearing roller ABC Smith bearing PCR-3-1/2-6	3732018	4
B06.2	Bearing roller AXIS CF 2S SPEC	3734936	7
B06.3	Bearing roller Turner SBFT 206 20 SPEC 1 1/4 SHAFT	3671206	4
B06.4	Bearing roller Shuster 6WY 20D X ,625ID - 3671012	3734937	12
B07.1	Washer 7/8	5150030	2
B07.2	Washer 1 3/8	5150034	2
B07.3	Pin	3007607	4
B07.4	Nut 7/8 - 14 hex	5150020	2
B07.5	Nut 1 3/8 - 12 hex	5150027	2
B07.6	Roller cab without bearing	2001251-1	2
B07.7	Roller cab with bearings	2001251-601	7
B08.1	Door stop service door Rokwood US 26D/626	8023467	3
B08.2	Lockset door	3711973	2
B09.1	Hyd pump power pack GHP 2-A-D-30	2138323-07	1
B09.2	Black curtain brackets	3716450	20
B09.3	Tank level indicators	2138323 26	4
B10.1	Valve directional vickers DG4V-3-OC-VHH-60	2138323 14	2
B10.2	Gauge pressure valve KF-L8/14E	2138323 06	2

B10.3	Fitting kit small		4
B10.4	Fitting kit medium		4
B10.5	Fitting kit large		4
B10.6	Coupling Rotex 38/GG 25/92	2138323-	1
B10.7	Valve fast down Sun DFD A8DN	3723741	1
B10.8	Valve counterbalance Sun CWCGLGN - 360 BAR	3721476	2
B10.9	Valve Sun 8FDA8DN		2
B10.10	Seal tank	2138323 31	14
B11.01	GPU cable hangers	3689234	10
B12.01	Castor wheel	3676001 CH	1
B12.02	Bracket rollers	8007240	1
B12.03	Bracket rollers	9600635	1
B12.04	Bracket rollers	8007250	1
B13.01	Bracket rollers / roller unit body	2128517	1
B13.02	Bracket rollers	2129898	1
B13.03	Bracket cab roof rods		1
B13.04	Bracket rollers / roller casting body	2130142	1
C02.1	Safety shoe	4142538	1
C02.2	Safety shoe plug	4160258	2
C02.3	Auto level wheel	2001940-500	1
C02.4	Limit switch with cable	4100214	2
C02.5	Limit switch with cable	4100215	1
C02.6	Limit switch with cable	4100218	1
C03.1	Cab sprocket/ potentiometer kit	2135912	1
C04.1	Safety strip bogey wheels	3631796	3
C04.2	Safety strip hyd tank	3731803	2
C05.1	Inverter Schneider ATV 312HU 55N4	3719275	2
C05.2	Hoist cable drum	2101696	1
C06.1	Lights operating red flashing Q125LF-CE		4
C06.2	Transformer	4141972	1
C06.3	Lights obstruction top red Nanhua LED (1 used A5)(3)	8022839 CH	2

C07.1	UPS 1000A - ATA	3708717 CH	2
C08.1	Motor cab	3648674	1
C08.2	Seal rubber cab	2003964	1
C08.3	Motor cable hoist	3650123	1
D02.1	Screen Elo ET 1537L-7CWA-1LNPB-G	3727758	1
D03.1	Screen Elo power supply E 558862		0
D05.1	Hydraulic hoses small		2
D05.2	Hydraulic hoses medium		2
D05.3	Hydraulic hoses large		2
D06.1	Cushion cab	2139488	2
D07.1	Chain guard upper	2137906	1
D07.2	Chain guard lower	3615692	1
D08.1	Chain bogey drive ANSI 80- 2R	3679249	6
Floor 1	Motor traction drive	3702913	2
Floor 2	Motor power pack ABB M2QA.132M4A-B35	2138323.04	1
Floor 3	Hydraulic tank	2138323.01	1
Floor 4	Hydraulic cylinder	2137699 CH	1
Floor 5	Windows tunnel small - A	3728471.01	1
Floor 6	Windows tunnel small - B	3728471.02	1
Floor 7	Windows tunnel small - C	3728471.03	1



ANNEX N

ACSA maintenance procedure for Passenger loading Bridges - D080 029M

- Available upon request from the ACSA service manager



ANNEX O

Passenger loading bridges – standard operating procedure

Available upon Request from the ACSA service manager



ANNEX P

Maintenance of Passenger Loading Bridges – Electrical lockout procedure

Available upon Request from the ACSA service manager



ANNEX Q

O.R. Tambo International Airport – operating instruction for PLBs

Available upon Request from the ACSA service manager



ANNEX R

Passenger Loading Bridges - Fire Emergency procedure

Available upon Request from the ACSA service manager



ANNEX S

ACSA IMC procedure for call out and work orders

Available upon Request from the ACSA service manager

ANNEX TInternal and external factors

Below is a list of internal and external factors which may affect equipment availability and are beyond the contractor's control:

	Type	Comment
External resources	Utilities •Water •Electricity •Gas •IT Support and other interfaces outside the contractor battery limit	-No impact to reliability/Maintainability. -It Impact on availability from operations view
External causes	•Outside Operating conditions/parameters •Operator fault/incorrect operation, consider shifting the risk to the Service provider by giving him responsibility to support Operations/Operators •Damage by others(users and Third parties) i.e. Elevator doors •Incorrect use •Foreign material is system	-No impact to reliability/Maintainability. -Impact on availability from operations view This are some of the occurrences that may not be considered the Normal Operating conditions
Other	•Lack of information/Drawings •Lack of access due to no fault of the contractor after they have requested access timeously •Equipment's under Projects •Other factors that can be proven that was beyond the contractor's fault	
Spares	Availability of spares (if the spares are not under the control of the Service provider to the limit of the budget)	-Affect Maintainability

	<p>Typically: It is the responsibility of the Client to ensure adequate administration and re-order spares timely, It is the responsibility of the service provider to ensure that the stores administration is done and minimum stock levels are adhered to, the request to buy spare are replenished are done on time intime</p>	<p>No impact on service provider.</p> <p>The Risk is not sitting with a single owner</p>
--	--	--

ANNEX U**ACSA Mechanical Standardised Minimum: legal requirements and minimum competency requirements**

PLB-charlie	Key	• Maintenance of Passenger Loading Bridges • IATA AHM 922			Maintenance reports as per procedure	DIW/6MY/2Y/4Y	Site supervisor	• Instrumentation and control/Electrical/Millwright Trade test • Any OHS Training certificate	• Min 3 years experience post trade test qualification • 2 years supervisory Experience • Min 2 years OHS experience	• CIDB registration in category ME • Entity performing any electrical works to be registered with Department of Labour as an Electrical Contractor • Entity performing load testing of PLB Hoists to be registered with Department of Labour as a Lifting Machinery Entity
					IATA AHM 922 Compliance records	Monthly	Artisan Mechanical	Fiting/Millwright trade test	• Min 3 years experience post trade test qualification and at least 1 year must be in the maintenance of PLBs	
					Certificate of Compliance for an Electrical Installation	• Before bridge is used for first time • After Modifications	Technician	Electrical/Instrument and control trade test	• Min 3 years experience post trade test qualification and at least 1 year must be in the maintenance of PLBs	
								Assistant Mechanical	N2 Mechanical	
PLB-Alpha								Assistant Technician	N2 Electrical/Instrument and control	1 year experience in maintenance of electrical and control systems
								Lifting Machinery Inspector (Ad hoc)	Registration with ECSA as a Lifting Machinery Inspector	Minimum 1 year experience post registration with ECSA as a Lifting Machinery Inspector
PLB - Echo										
			DO80 028M	06 March 2013						



ANNEX V

ACSA Inventory procedure

Available upon Request from the ACSA service manager



ANNEX W

Current Guarantee and Warrantee

N/A