

LIST OF DRAWINGS

2426 - G01 : SITE LAY-OUT PLAN

2426 - G02 : ADMINISTRATION BLOCK (WET)

- PLAN, SECTIONS AND ELEVATIONS

2426 - G03 : ADMINISTRATION BLOCK (WET)

- PLAN, SECTIONS AND SCHEDULES

2426 - G04 : ADMINISTRATION BLOCK (WET)

- LAY-OUT OF RAFT FOUNDATIONS

2426 - G05 : STANDARD SINGLE CLASSROOM

- PLAN, ELEVATIONS AND FOUNDATIONS

2426 - G06 : STANDARD SINGLE CLASSROOM

- ELEVATIONS AND SCHEDULES

2426 - G07 : ABLUTION BLOCKS

- LAY-OUT PLANS AND SECTION A-A

2426 - G08 : ABLUTION BLOCKS

- ELEVATIONS

2426 - G09 : ABLUTION BLOCKS

- LAY-OUT OF RAFT FOUNDATIONS

2426 - G10 : CONCRETE DETAILS OF 50 CUBIC
METRE SEPTIC TANK

	ENERGY DEMAND			
	DESCRIPTION	QUANTITY	POWER (W)	TOTAL POWER (W)
ADMIN BLOCK	F2 (1200 x 2TUBE OPEN CHANEL)	27	2 x 28	1512
	F2VP (1200 x 2TUBE VAPOUR PROOF)	0	2 x 28	0
	BH (CEILING MOUNTED BULK HEAD)	19	1 x 18	342
	WMBH (WALL MOUNTED BULK HEAD)	10	2 x 13	260
	GRAND TOTAL POWER (W)			2114
CLASSROOMS	F2 (1200 x 2TUBE OPEN CHANEL)	4	2 x 28	224
	F2VP (1200 x 2TUBE VAPOUR PROOF)	0	2 x 28	0
	BH (CEILING MOUNTED BULK HEAD)	0	1 x 18	0
	WMBH (WALL MOUNTED BULK HEAD)	0	2 x 13	0
	GRAND TOTAL POWER (W)			224



LOCALITY PLANTS.

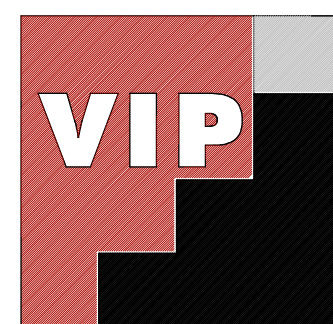
ADMINISTRATION BLOCK:	300 msq
CLASSROOMS:	50 msq
TOTAL:	350 msq
ERF AREA:	9543.266 msq
COVERAGE:	3.668 %

CLIENT : ESCOM



	3	
NO	REVISIONS	DATE

SKAAL
SCALE 1:500



PRETORIA
2nd Floor, Building 88A, Pony Street
Tijger Vallei Office Park
P.O.Box 11211, Silver Lakes 0054
Tel: +27 (0) 12 809 0010
Fax: +27 (0) 12 809 1435
E-Mail: pretoria@vipconsulting.co.za

OTHER OFFICES:
BENONI

VIP CONSULTING ENGINEERS (Pty) Ltd
Consulting Civil and Structural Engineers
Reg No 97/05698/07

PROJEK
PROJECT

KWAZULU NATAL PROVINCE
MHLWAZINI HIGH SCHOOL

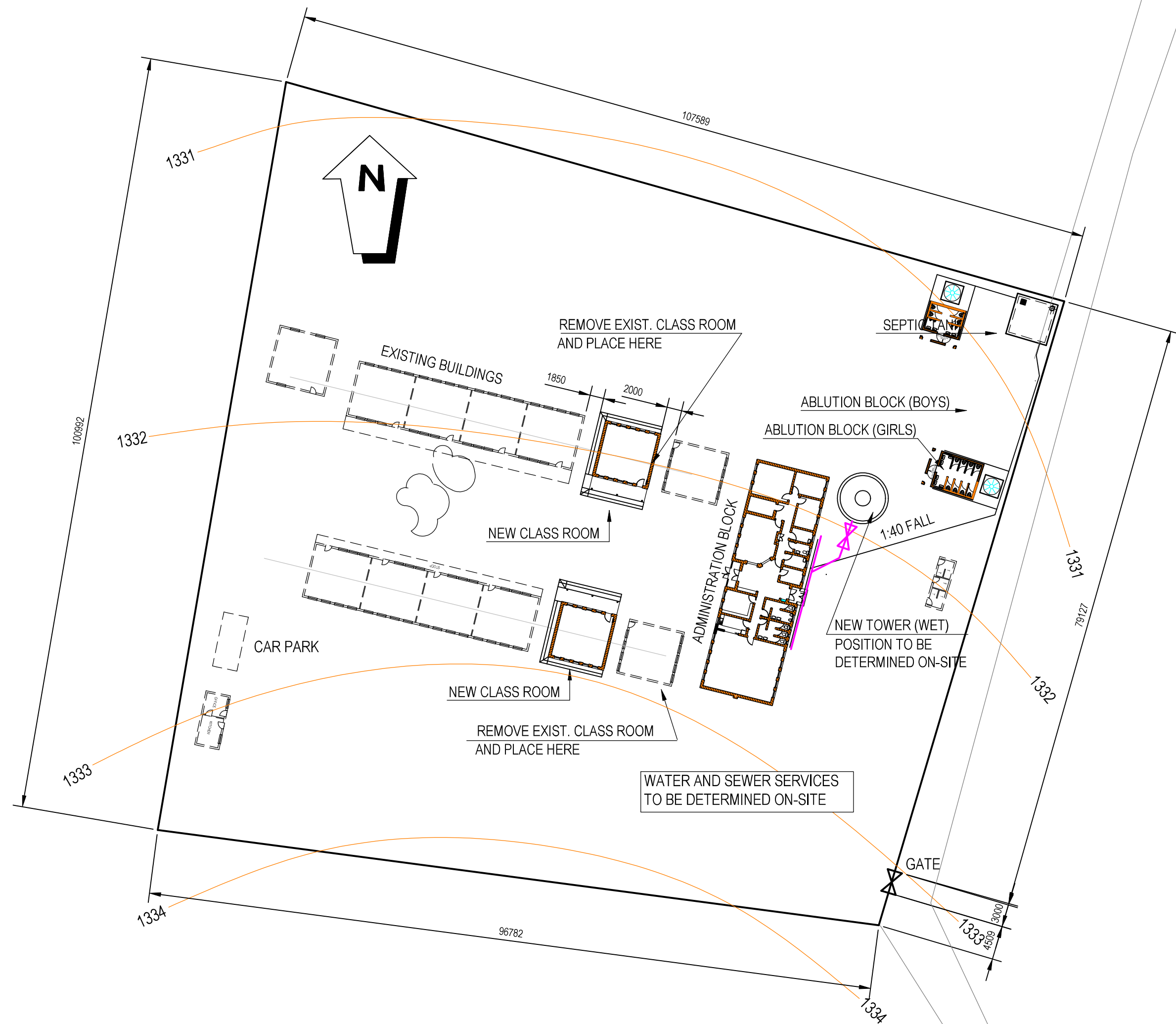
DIENSDetail
SERVICE Detail

SITE LAY-OUT PLAN

VERWYSINGS NOMMER
REFERENCE NUMBER

F:\Projects\2401-2450 DRAWINGS

OPGEMEET SURVEYED	ONTWERP DESIGNED	GETEKEN DRAWN J.J.S
NAGESIEN CHECKED F.P.	DATUM DATE MARCH 2015	
ING. TEKENINGNOMMER ENG. DRAWING NUMBER 2426 - G01		GETAL VELLE No. SHEETS



Banking

ZUKI M. QINA
YYYY-MM-DD
STRUCTURAL TECHNOLOGIST
(PrTechni 201630024)