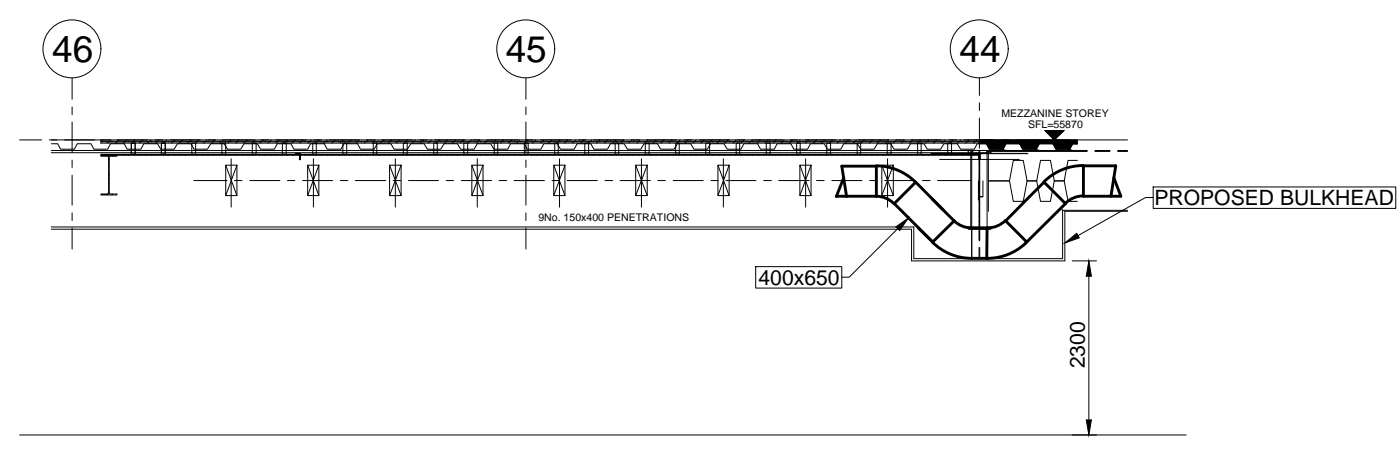


SECTION AA
Scale 1:100



DETAIL:1
Scale 1:100

1. SHEET METAL DUCTING MUST BE GALVANISED MILD STEEL, WITH MEZZ-FLANGES. ALL HVAC EQUIPMENT TO BE ADEQUATELY SUPPORTED AT REGULAR INTERVALS WITH SUITABLE THREADED ROD AND ANGLE BAR AS PER SABS 0193
 2. ALL DUCTWORK JOINTS MUST BE PROPERLY SEALED AND AIRTIGHT.
 3. ALL DOORS TO TOILETS WITH MECHANICAL VENTILATION TO BE UNDERCUT MINIMUM 20mm.
 4. THE HVAC CONTRACTOR TO WIRE BETWEEN THE HVAC EQUIPMENT AND HVAC DB OR ISOLATOR.
 5. ALL ARTIFICIAL VENTILATION SYSTEMS MUST NOT EMIT A NOISE LEVEL OF WHICH CAUSE THE AMBIENT NOISE LEVEL TO EXCEED 50DBA MEASURED AT THE BOUNDARY OF PROPERTY.
 6. ALL EQUIPMENT MUST BE MOUNTED ON ANTI-VIBRATION MOUNTINGS.
 7. AC UNITS FINAL POSITIONS TO BE INSTALLED TO ARCHITECT'S DIMENSIONS AS PART OF CO-ORDINATION.
 8. ACCESS HATCHES POSITIONS TO ARCHITECT'S CO-ORDINATED CEILING LAYOUT.
 9. FINAL DIFFUSER POSITIONS AS PER ARCHITECT'S CO-ORDINATED CEILING LAYOUT - COLOUR TO ARCHITECT'S SPECIFICATION.
 10. FINAL WEATHER LOUVRE POSITIONS AS PER ARCHITECT'S ELEVATION DRAWINGS COLOUR TO ARCHITECT'S SPECIFICATION.
 11. ALL FIRE DAMPERS MUST BE 350mm LONG ELECTROVENT OR EQUAL AND APPROVED.
 12. ALL WASHABLE FILTERS MUST BE INSTALLED WITH PLEATS IN THE VERTICAL.
 14. SOUND ATTENUATORS MUST HAVE AIR GAPS WITH LENGTHS AS INDICATED.
 15. ALL GRILLES & WEATHER LOUVRE SIZES...INDICATED AS CLEAR OPENING SIZE....
- NOTES TO BUILDER:
1. BUILDER TO PROVIDE PENETRATIONS THROUGH CONCRETE SLABS & BRICK WALLS FOR HVAC EQUIPMENT AND MAKE GOOD AFTER INSTALLATION OF HVAC EQUIPMENT.
 2. FIRE STOPPING & SEALING OF ALL DUCT & PIPE ENTRIES TO ARCHITECT'S DETAIL.
 3. ALL WEATHER LOUVRE PENETRATIONS THROUGH WALLS MUST BE COMPLETE WITH 25mm TIMBER FRAME FOR THE SCREW FIXING OF WEATHER LOUVRES & GRILLES.
 4. DOOR GRILLES - 500x300 (UNLESS NOTED OTHERWISE) SUPPLIED BY AIR-CONDITIONING CONTRACTOR AND CUT AND FITTED - BY BUILDER.
- NOTES TO ELECTRICAL CONTRACTOR:
1. PROVIDE POWER SUPPLY TO ALL HVAC DB'S & ISOLATORS AS INDICATED ON DRAWING COMPLETE WITH CONDUITS, DRAW-WIRES & JUNCTION BOXES.
 2. ELECTRICAL POWER SUPPLIES & ISOLATORS TO BE PROVIDED WITHIN A METER OF HVAC EQUIPMENT.
 3. ISOLATORS TO FAN COIL UNITS AND FANS TO BE IN CEILING SPACE WITHIN A METER OF HVAC EQUIPMENT.
- TO PLUMBING SUB-CONTRACTOR:
1. PLUMBER TO PROVIDE TRAPS IN CEILING CONNECTED TO SEWER SYSTEM FOR CONDENSATE DRAINS - REFER TO DETAIL.
 2. CONDENSATE DRAINS FROM AC UNITS TO A TRAP IN CEILING BY AC CONTRACTOR
 3. CONDENSATE DRAIN PIPES TO FOLLOW THE SHORTEST POSSIBLE ROUTE AS DETERMINED ON SITE. ACCEPTABLE FALL 1:80 MIN AND SIZES TO BE AS SHOWN ON PLAN LAYOUT.

SYMBOL LEGEND	
	ISOLATOR AND ELECTRICAL SUPPLY: 380 VOLT/ 3-PHASE.
	INDICATED D/B BOARD.
	ELECTRICAL POWER SUPPLY: 220V/SINGLE PHASE.
	DOORS TO BE UNDERCUT BY 20mm.
	MAINS WATER SUPPLY: WITH GATE VALVE-SIZE AS NOTED
	DRAIN: NB 100, CONNECTED INTO SEWER SYSTEM.
	FIRE DAMPER - MOTORISED SPRING RETURN
	UNINSULATED DUCTING
	INTERNALLY INSULATED DUCTING
	EXTERNALLY LAGGED DUCTING
	REMOTE ON/OFF SWITCH - 100 x100 WALL BOX WITH 25mm CONDUIT INTO CEILING VOID.
	BMS TEMPERATURE SENSOR
	THERMOSTAT (MASTER DIFFUSER)



PROJECT:

INTERNATIONAL DEPARTURE TERMINAL
CENTRAL BUSINESS LOUNGE
SECOND FLOOR PLAN HVAC LAYOUT

DRAWING:

AIRVENT
CENTRAL PLANT SOLUTIONS

9 TEE AVE STR BRACKENFELL
PO Box 6807
Wageningen 7500
Fax: 021 9816295
TEL: 021 981 6299
johan@airventcape.co.za
peter@airventcape.co.za

DWG NO: CBL-18-07-30-1
REV NO: AS BUILT

SCALE: 1:100 A1
DATE:18-11-21

APPROVED BY:
APPROVAL DATE:

DRAWN BY:MCL
DESIGN BY:

AV DRAWING STATUS

FIRST ISSUE

REV

GENERAL NOTES:

1. THESE DRAWINGS ARE TO BE READ IN CONJUNCTION WITH ALL THE RELEVANT CONSULTANTS' DRAWINGS. ALL DIMENSIONS ARE TO BE READ AND NOT TO BE SCALED. ANY DISCREPANCIES ARE TO BE REPORTED TO THE PRINCIPAL AGENT

2. THESE DRAWINGS ENJOY A COPYRIGHT WHICH VESTS IN AIRVENT. UNLESS OTHERWISE AGREED IN WRITING, THESE DRAWINGS MAY NOT BE REPRODUCED OR TRANSMITTED IN ANY FORM OR BY ANY MEANS WHATSOEVER TO ANY PERSON WITHOUT THE WRITTEN PERMISSION OF THE COPYRIGHT HOLDER