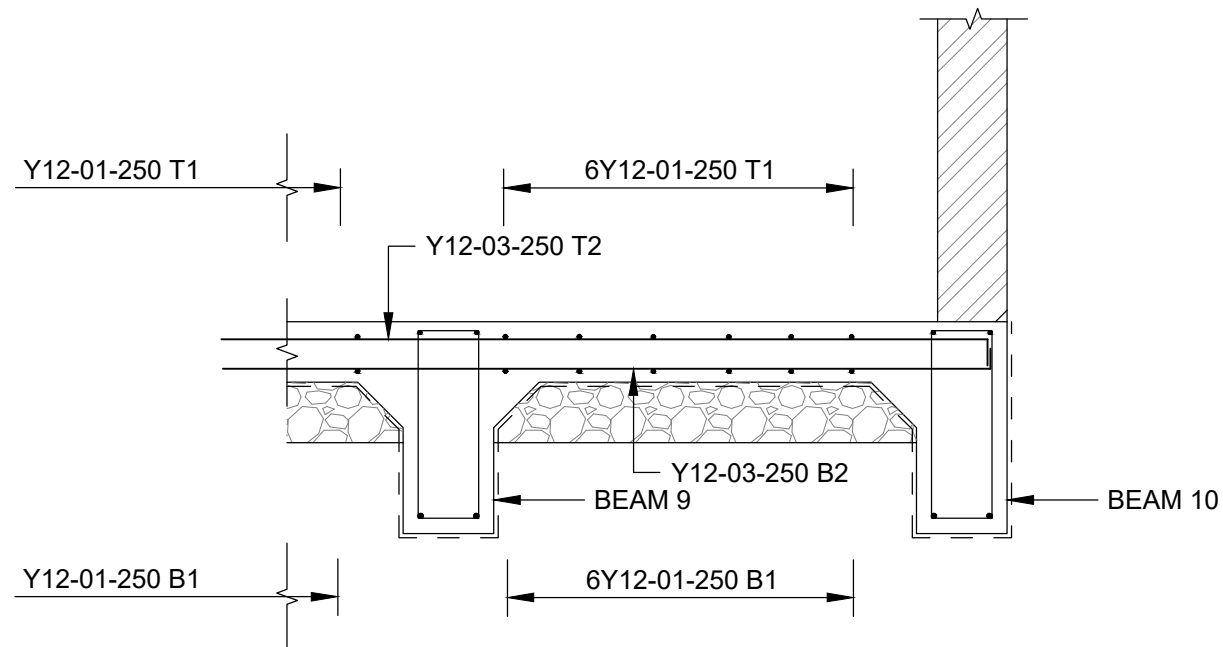


FINANCE BLOCK FOUNDATION REINFORCEMENT LAYOUT
SCALE 1:50



SECTION A-A
SCALE 1:25

MEMBER	No. Off	REINFORCEMENT						BENDING DIMENSIONS					
		Type	Mark	No in Each	Total No.	Length mm	Shape Code	A mm	B mm	C mm	D mm	E/R mm	
200mm THICK RC FLOOR SLAB	1	Y12	01	72	72	8390	37	140	8275				
		Y12	02	6	6	3640	38	140	3415	140			
		Y12	03	96	96	5350	38	130	5145	130			
		Y12	04	24	24	6210	38	130	6010	130			
		Y10	ST1	106	106	820	83	250	85	250	250		
BEAM 1 (700Dx 300W)	1	Y12	05	4	4	7490	37	150	7365				
		Y16	06	4	4	7630	37	200	7465				
		R10	SA1	56	56	1730	60	600	200				
BEAM 2 (700Dx 300W)	1	Y12	07	2	2	6205	38	150	5965	150			
		Y16	08	2	2	6285	38	200	5965	200			
		R10	SA1	23	23	1730	60	600	200				
BEAMS 3, 4 & 5 (700Dx 300W)	3	Y12	09	2	6	5350	38	150	5105	150			
		Y16	10	2	6	5430	38	200	5105	200			
		R10	SA1	20	60	1730	60	600	200				
BEAM 6 (700Dx 300W)	1	Y12	11	2	2	6680	38	150	6440	150			
		Y16	12	2	2	6760	38	200	6440	200			
		R10	SA1	25	25	1730	60	600	200				
BEAM 7 (700Dx 300W)	1	Y12	13	2	2	3620	38	150	3375	150			
		Y16	14	2	2	3700	38	200	3375	200			
		R10	SA1	13	13	1730	60	600	200				
BEAM 8 (700Dx 300W)	1	Y12	15	2	2	12980	38	150	12735	150			
		Y16	16	2	2	13060	38	200	12735	200			
		R10	SA1	50	50	1730	60	600	200				
BEAMS 9 & 10 (700Dx 300W)	2	Y12	17	4	8	8380	37	150	8255				
		Y16	18	4	8	8520	37	200	8355				
		R10	SA1	64	128	1730	60	600	200				

GENERAL NOTES

- All work to be in accordance with the NATIONAL BUILDING REGULATIONS and STANDARDS ACT No. 103 of 1977
- All drawings to be read in conjunction with the Architect's relevant drawings.
- All dimensions to be checked on site and any discrepancies to be reported before construction commences.
- No concrete to be poured without the Engineer's consent.
- No structural alterations to be made without amended drawings
- TD = To detail, INV = Inverted, TAD = To arch. detail
- Sleeves and ducts must be provided for all pipes and services.

NOTES ON FOUNDATION CONSTRUCTION

- Foundations are subject to alterations as excavations proceed.
- No foundations are to be cast until excavations have been approved.
- A 50mm thick blinding layer of 1:3:6 conc. to be cast in all foundations excavated. This 50mm thick layer is not included in the thickness of foundations shown on drawing.

NOTES ON R.C. CONSTRUCTION

- The Contractor is to maintain the reinforcing steel in the correct position.
- Minimum cover to steel reinforcing: Beams: 30mm Columns: 40mm Foundations: 50mm
- Concrete or Tile spacer blocks to be used to maintain adequate cover.
- The contractor is to arrange for cube crushing tests to be as and when requested by the engineer.
- Breaks in concrete are only to be made where approved by the engineer.

- Beam depth given first and includes slab thickness.
- Concrete works cube strength is at 28 days to be as follows: Foundations, Beams & Slabs, Pile Caps, Columns: 30 MPa, unless stated otherwise on the R.C. drawing.
- All concrete to be machine mixed, vibrated and damp cured.
- Reinforcement is listed elsewhere on bending schedules.
- All reinforcement must be inspected by the engineer prior to pouring concrete.

ISSUED FOR TENDER

DRAWING REFERENCE

TITLE

NOTES

REVISIONS

CLIENT
**SOUTH AFRICAN
POLICE SERVICE**



Thekwini Geocivils cc T/A
TGC Engineers
Geotechnical & Civil Engineers
Waste Disposal Consultants • Project Managers

Suite 6
4 The Crescent
Westway Office Park
Westville
3611
Telephone 265-1777



P.O. Box 446
PAVILION
3611
Telefax 265-2727
E-mail: tgc@tgoengineers.co.za

PROJECT

**NEW SAPS
IKAGENG POLICE STATION:
NORTH WEST**

TITLE

**FINANCE BLOCK
FOUNDATION REINFORCEMENT
LAYOUT AND DETAILS**

CONSULTING ENGINEER

DESIGNED : M.S.M

SIGNATURE:.....

DRAWN : R.M.Y

PR. NO.:.....

CHECKED : M.S.M

DATE:.....

SCALE : AS SHOWN

DATE : MAY 2024

REFERENCE NO.

51660

FIGURE NO.

136

REVISION

A

CAD FILE:

S/.....