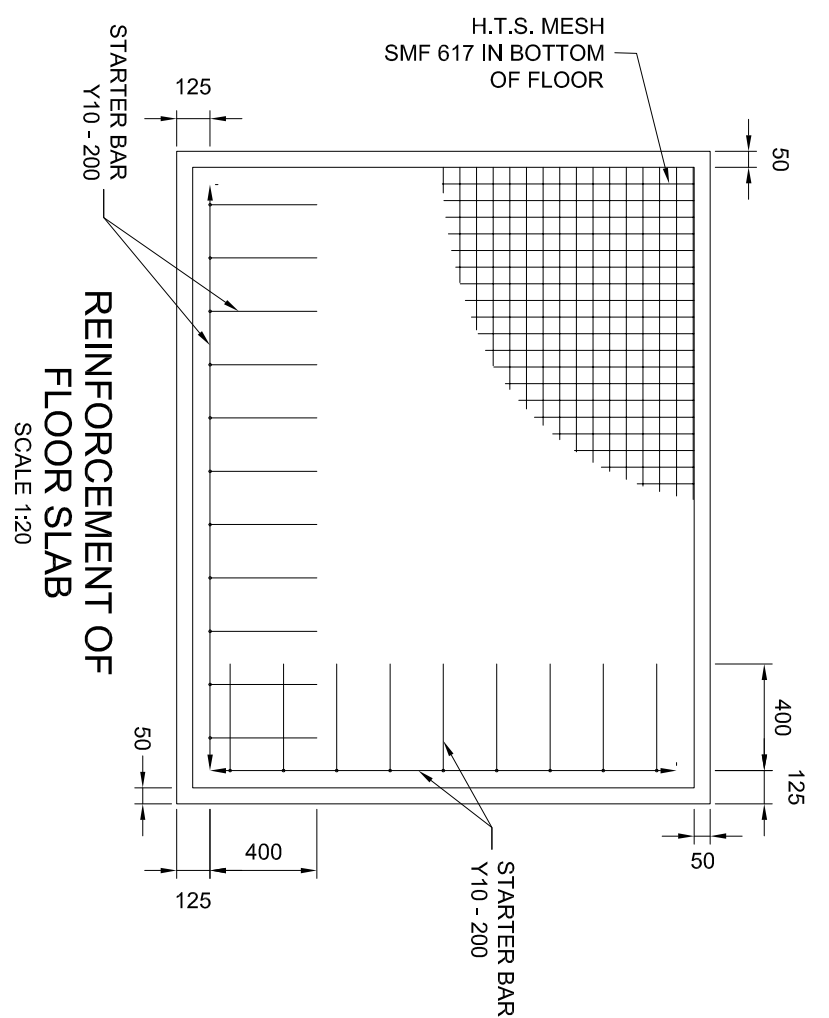
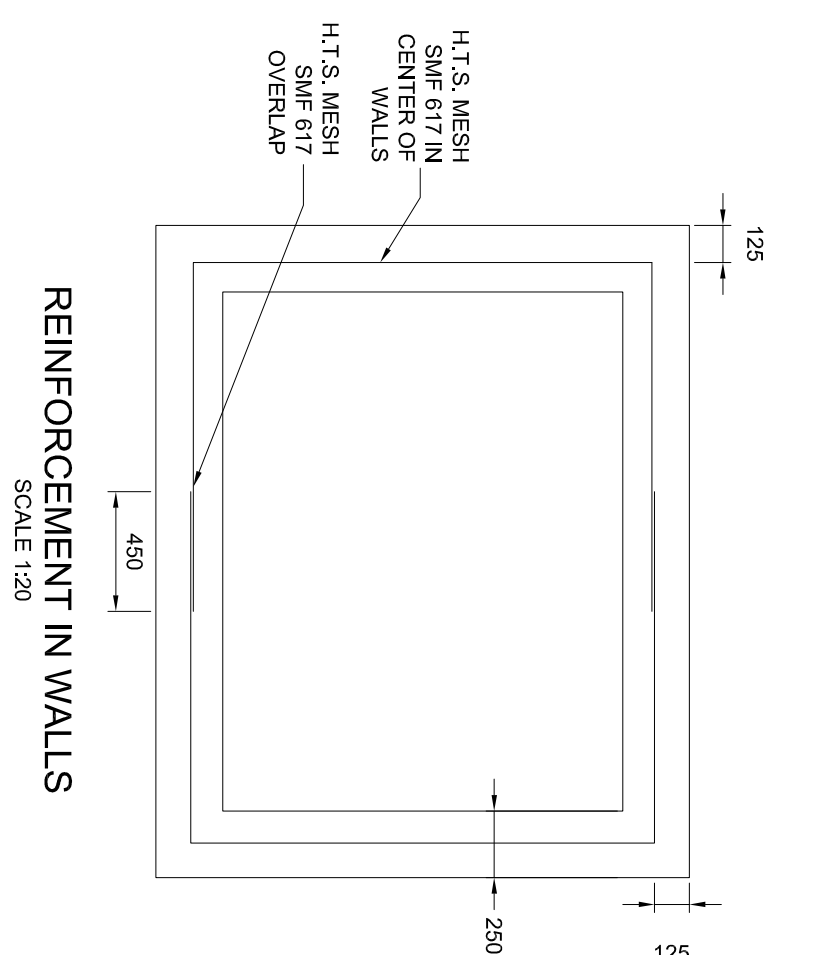
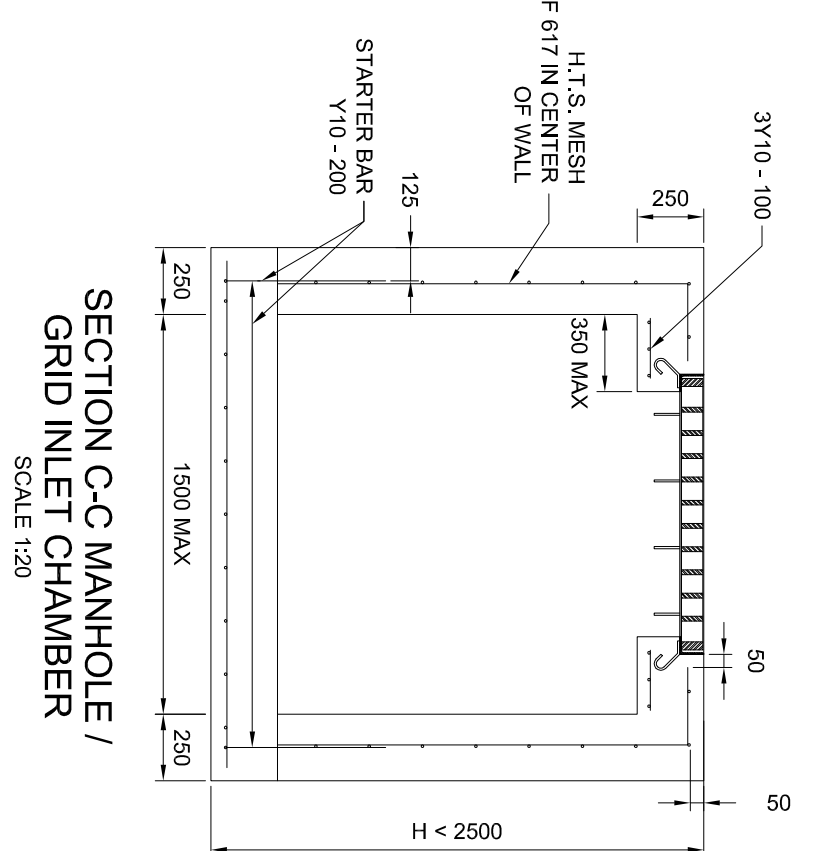
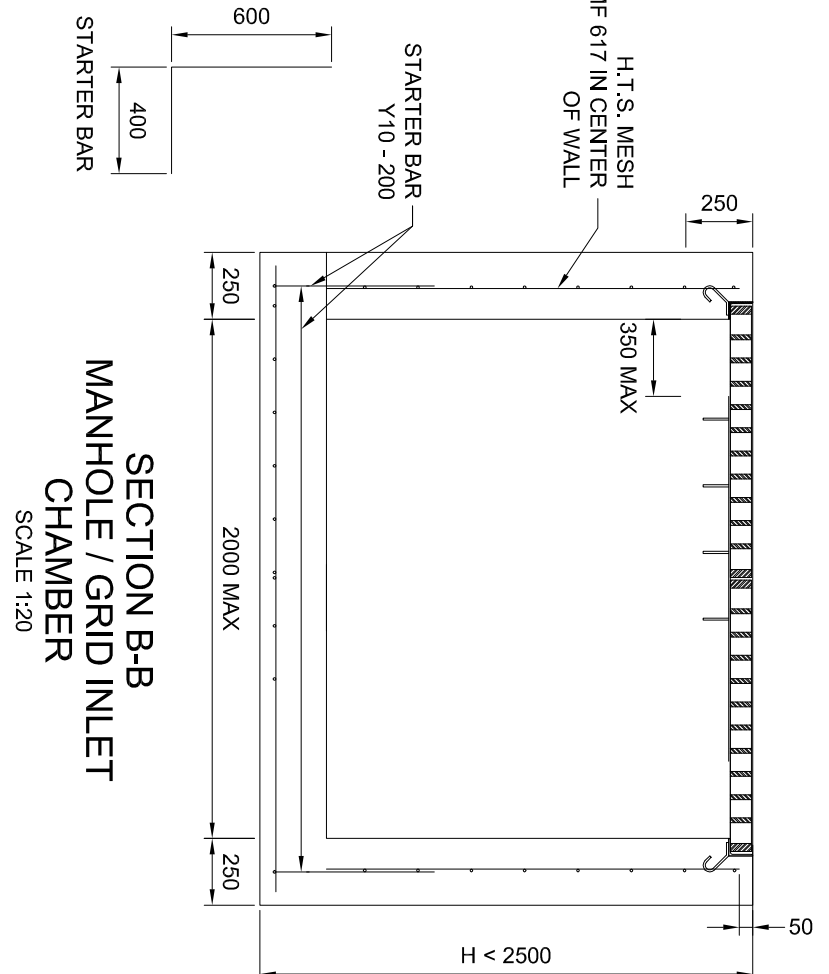
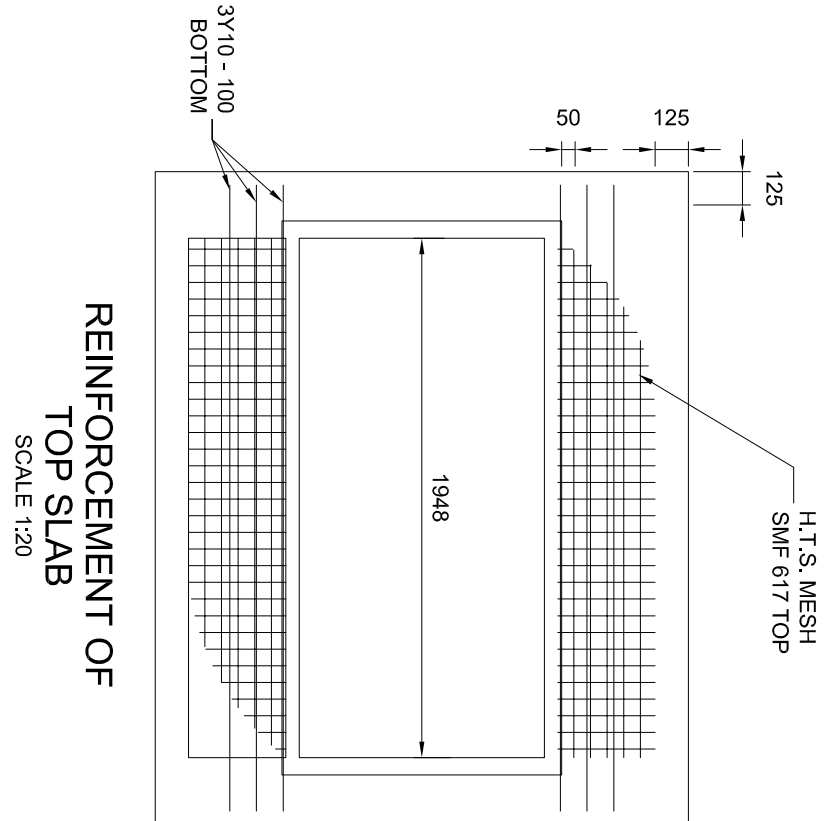
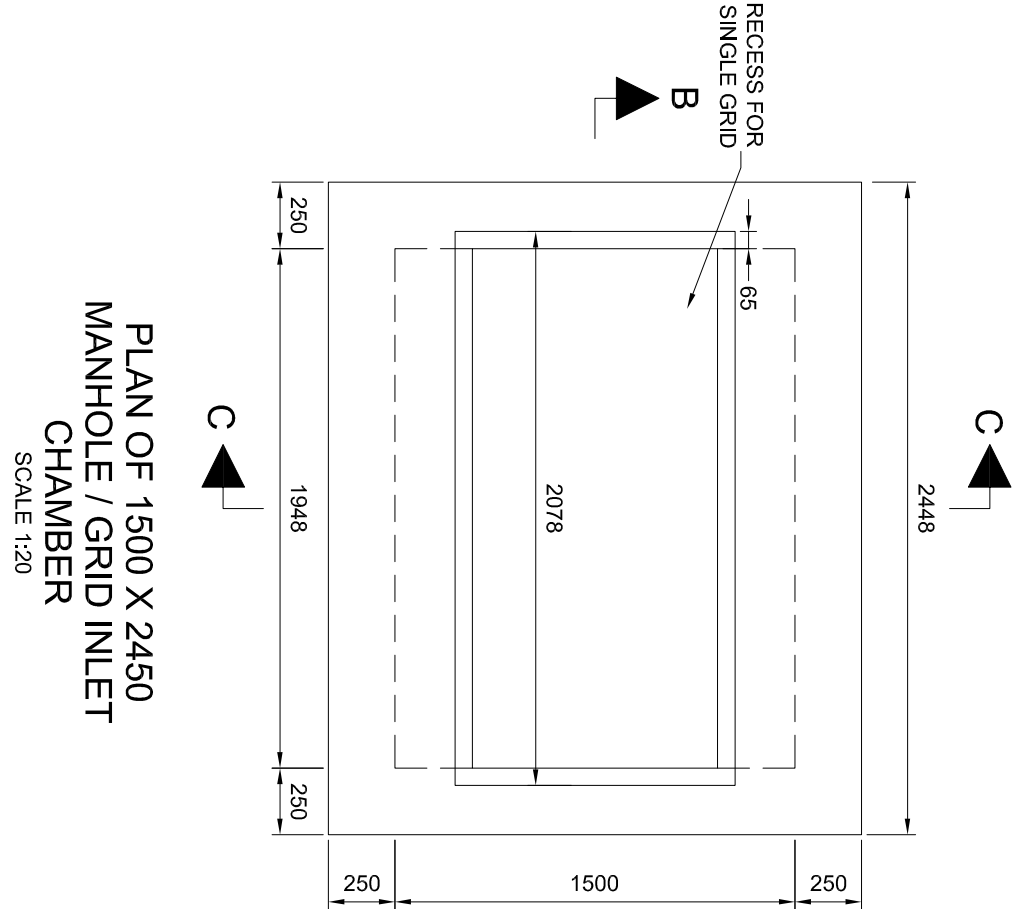
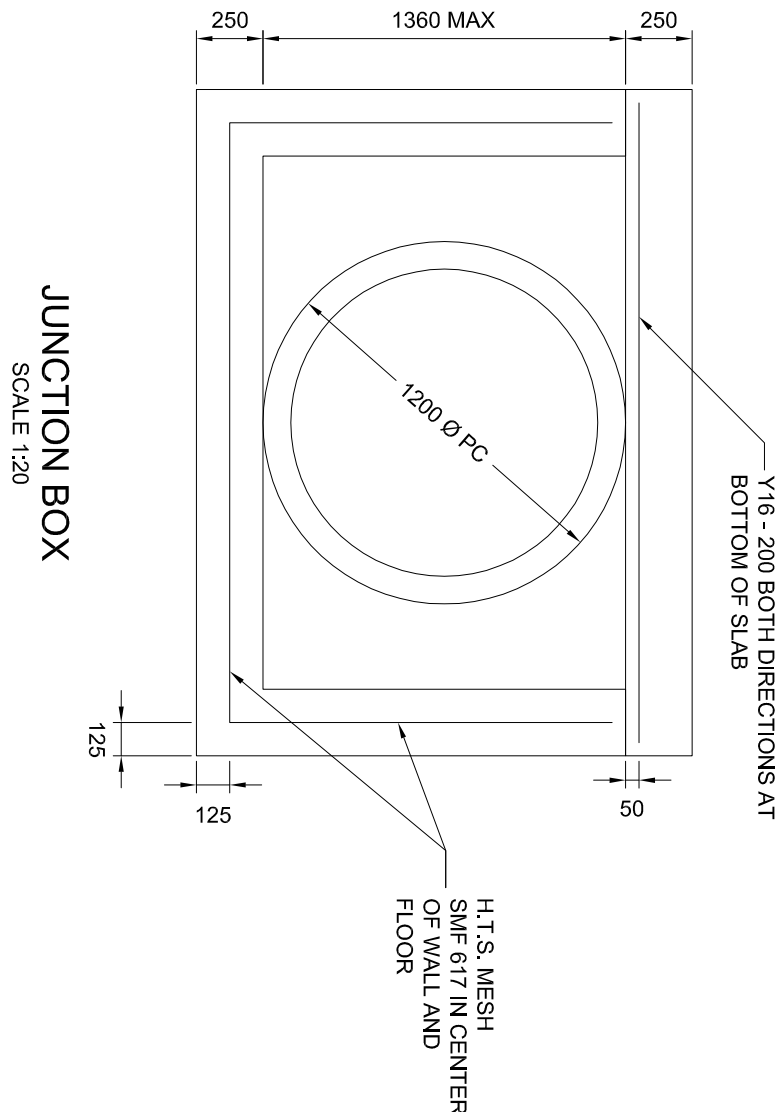
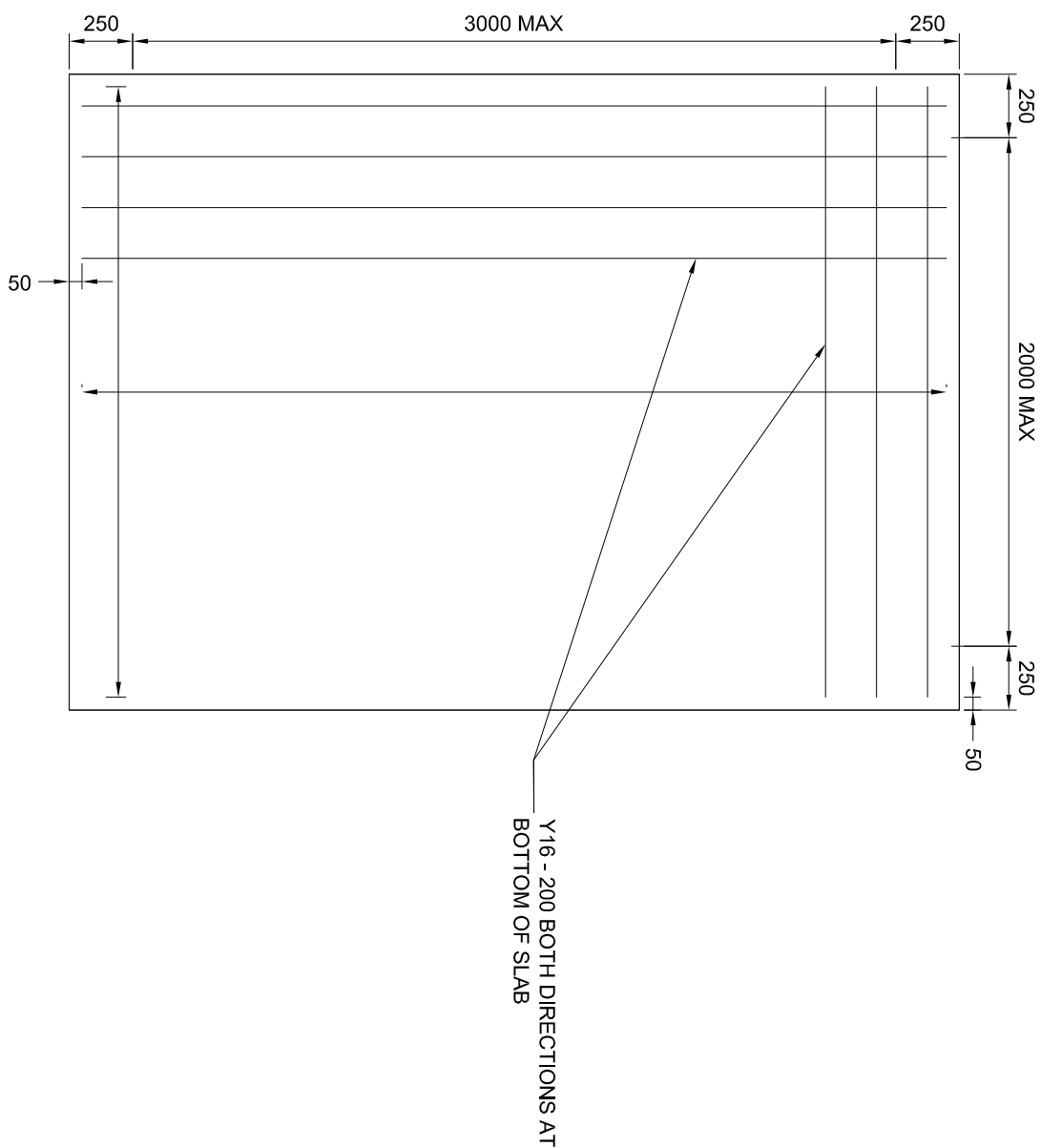


REINFORCEMENT DETAIL FOR SINGLE GRID MANHOLES / CHAMBERS WITH MAXIMUM INTERNAL DIMENSIONS OF 1500 X 1500



REINFORCEMENT DETAIL FOR SINGLE DOUBLE MANHOLES / CHAMBERS WITH MAXIMUM INTERNAL DIMENSIONS OF 1500 X 2000



NOTE:
1. MINIMUM CONCRETE COVER TO MAIN REINFORCEMENT IS 50mm
2. CONCRETE (CAST IN SITU) GRID INLET CHAMBERS BENCHING : CLASS 15/19

COPYRIGHT RESERVED

ON RECEIPT OF REVISED DRAWING, DESTROY PREVIOUS DRAWING

NOTES

ISSUED FOR TENDER

LEGEND

CLIENT:

CITY OF

MBOMBELA

THE ULTIMATE ENVIRONMENT

MBOMBELA LOCAL MUNICIPALITY

HEAD OFFICE

P.O BOX 48

MBOMBELA, 1201

TEL NO.: (013) 799 4111

FAX NO.: (013) 799 2030

MBOMBELA LOCAL MUNICIPALITY

HEAD OFFICE

P.O BOX 48

MBOMBELA, 1201

TEL NO.: (013) 799 4111

FAX NO.: (013) 799 2030

PROJECT TITLE:

CONSTRUCTION OF KAMADAKWA RING ROAD

DRAWING TITLE:

REINFORCEMENT OF MANHOLE, GRID INLET CHAMBERS AND JUNCTION BOX SLABS

DESIGNED:

P TSHABALALA

CHECKED:

F BURGER

DRAWN:

R VAN ZYL

SIGN:

SCALE:

FEBRUARY 2023

DATE:

AS SHOWN

DRAWING NO:

NKP/0432, DR17

CONTRACT NO:

AS SHOWN

REVISION: