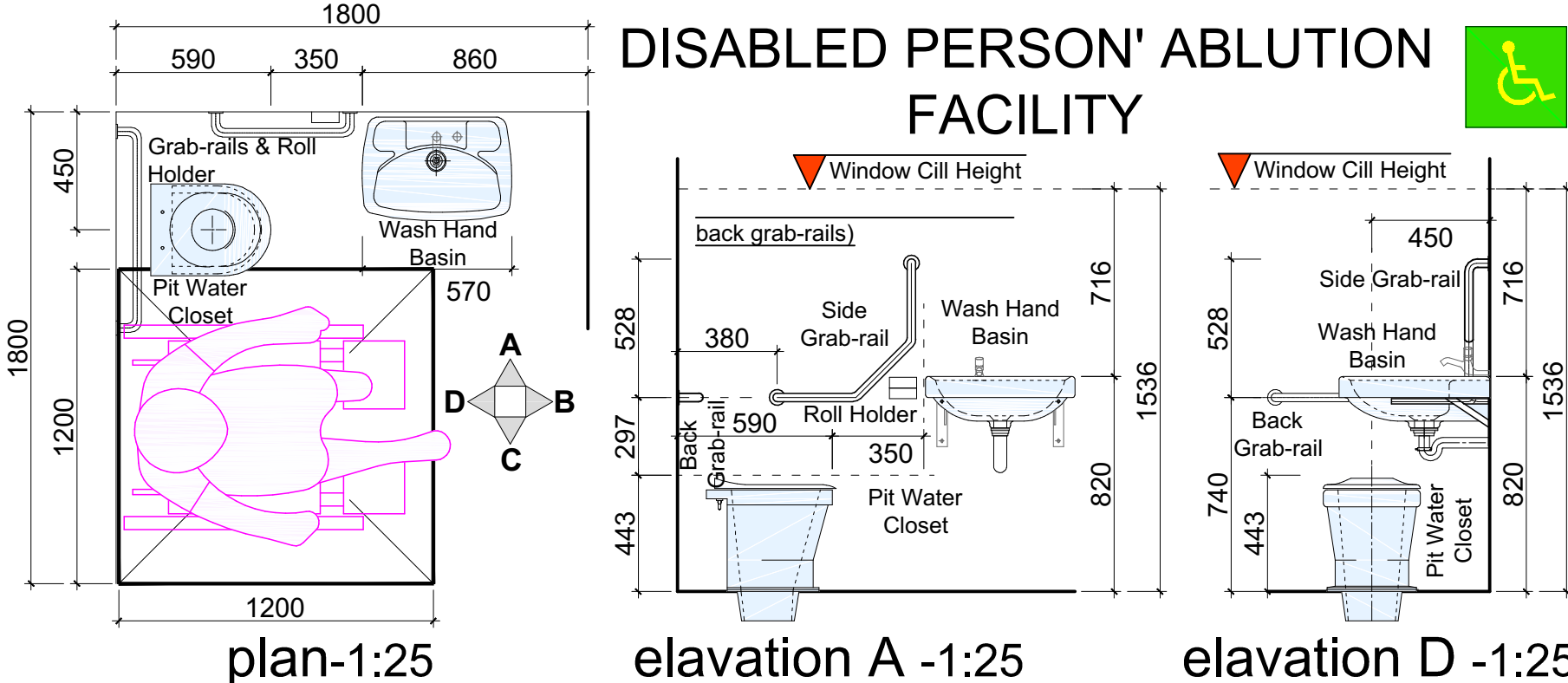
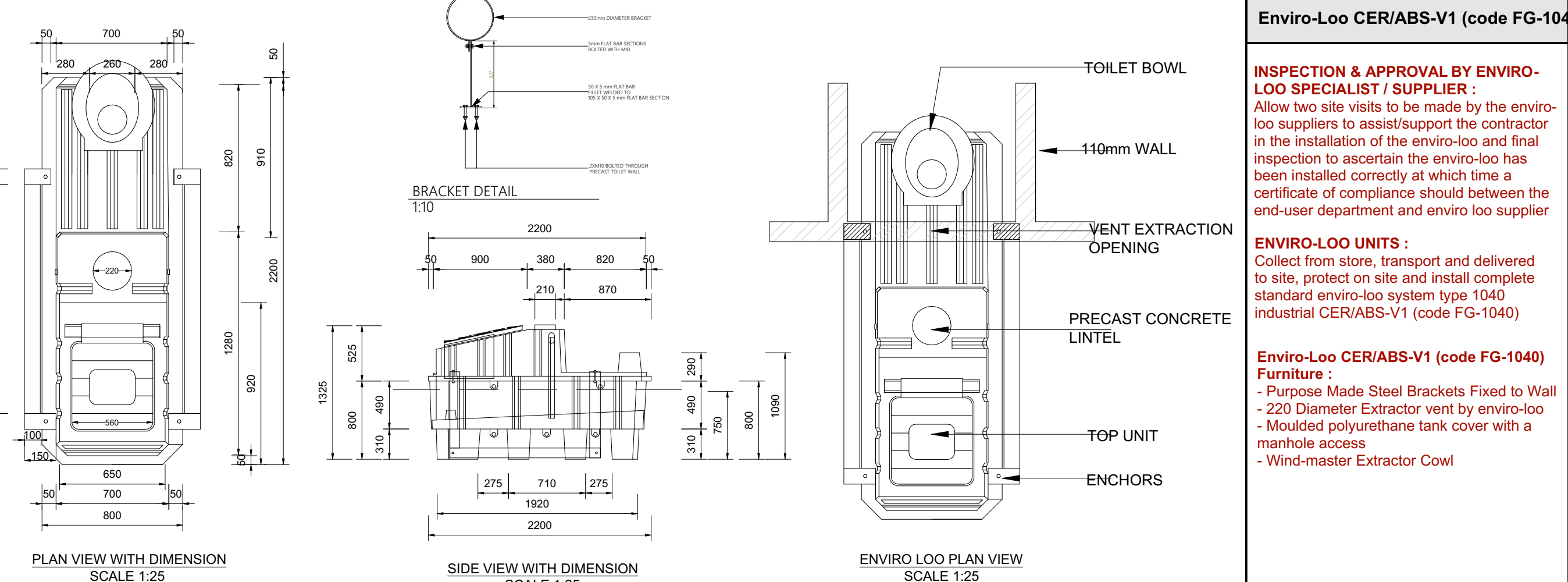
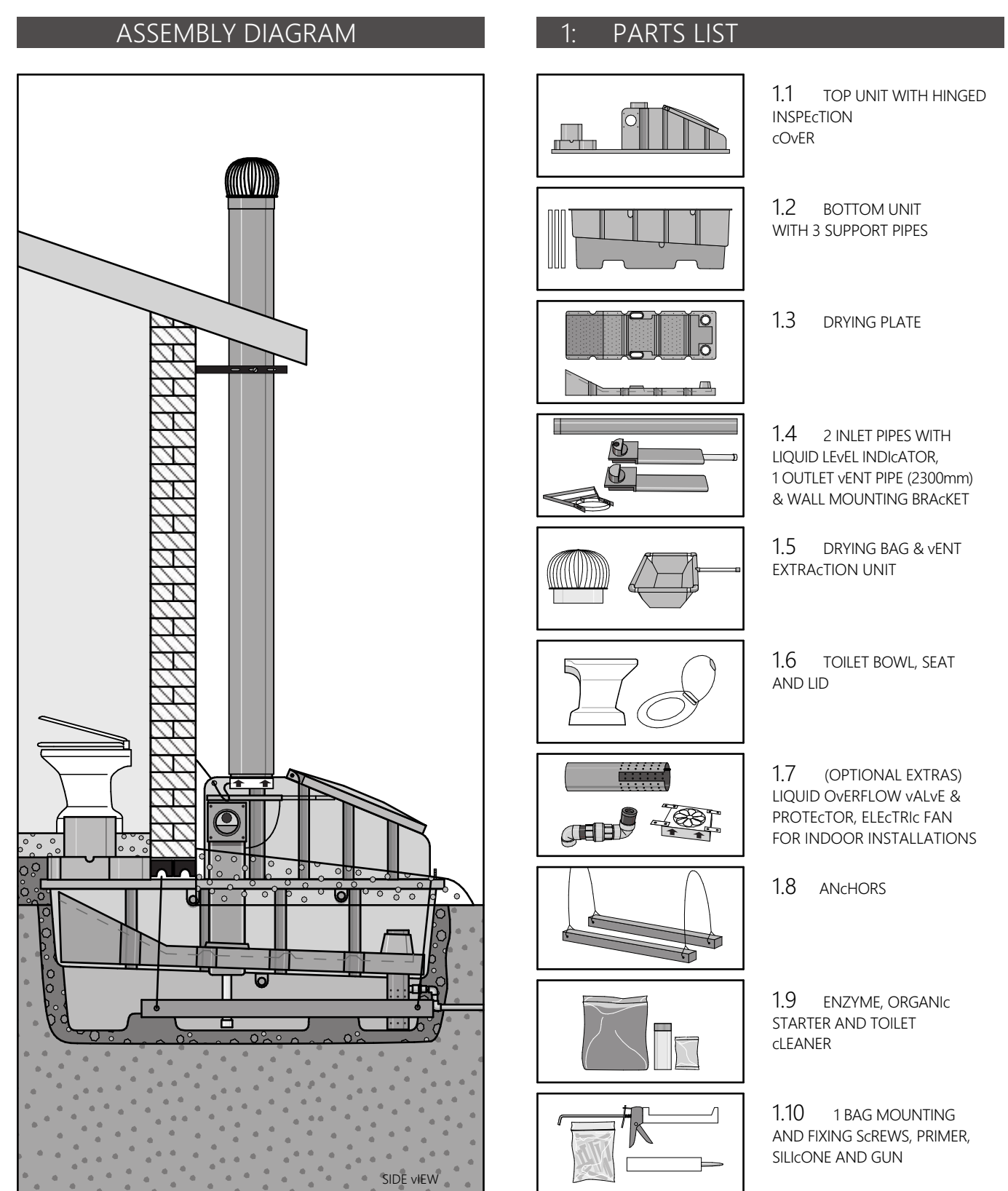


SANITARY SCHEDULE / BLOCK		
ITEM	DESCRIPTION	QUANTITY
Toilet Roll Holder	"Blivest" Stainless: Height: 385 mm Depth: 140 mm Width: 135 mm metallic lookable Toilet Roll Holder from Classic White Range. Durable and vandal proof with anti-theft bracket available.	07
S soap Dispenser	"Blivest" Stainless: Height: 310 mm Depth: 105 mm Width: 165 mm Lookable Soap Dispenser in Classic White Range	02
Paper Towel Dispens	"Blivest" Stainless: Height: 334mm Depth: 164mm Width: 236mm Lookable Paper Towel Cabinet Compact Manual Classic White Range	03
Waste Bin	"Blivest" Stainless: Height: 622mm Depth: 165mm Width: 565mm Wall mounted Bin Stainless Steel Range	02
Sho Bin	"Blivest" Stainless: Capacity: 20 litres Height: 600 mm Width: 420 mm Sho Bin Stainless Steel Range	02
Grat Rails	Code KB26, 300 x 300 x 300 x 500mm Stainless steel 600 sq no grab rail fixed in position Code KB18, 800 long x 50mm Projecting stainless steel straight grab rail fixed in position	02
Mirrors	Stainless steel or equal approved mirror size 300 x 400mm glued to wall with chrome plated screws	02

FINISHES SCHEDULE / BLOCK		
ITEM	DESCRIPTION	QTY
Primary Floor Finish	40mm Unfilled Grano scraded. Granolithic mix coat surface beds, composed of 1 part Surebond Cement (Cem: CEM I 42.5N) 2 parts sand and 1 part Grano coarse aggregate finished with a steel trowel finish. Grano is indicated to be chosen. Grano to be manufactured in accordance with SANS 50117-1 2017 trowel grano finish with a 100 mm grain monolithic upstanding against a stone skirting	
Skirting	150 mm grain monolithic upstanding rope skirting, moulded with special tool	
Final Floor Dressing	Fluorox HT Self levelling epoxy resin concrete screeding compound, with Matt self coat finish. Colour: Stone All surfaces to be clean, dry, balance and dust free with a maximum moisture content of 5%. Prime surface with one coat Polyurethane Solvent Free Epoxy Primer and Basen coat and apply over coating time of 24 hours. Apply one coat Light Stone Fluorox HT to a minimum trench thickness with a maximum over coating time of 48 hours.	
Internal Wall Footbri	Footbri: Cookbook FBX matt brick facing brick (To Match Existing School) pointing with 10 x 9mm recessed joints - in English bond complying with SANS 2001 - CEM1 - Construction works, masonry facing	
Internal Wall Parnt	Clean down with spirits of salts solution and apply two coats silicone-based brick dressing on:	
Ceiling	NO CEILING - CARBONUMUL WOOD PRESERVER All exposed external structural timber to be treated with two coats carbonumul wood preservative and two coats carbonumul applied to the internal overhanging roof member sections before the application of roof sheets.	
Wall Tiles	150X150 Essence White Gloss (WG-I-4) Glossy white wall tile, fitted to plaster (eslender) with tiles and approved tile adhesive applied and pointed with white cement to (slab)-beds laid in 2 Lines above wall	

DOOR SCHEDULE	DOOR 1		DOOR 2		DOOR 3		GATE 01		
	Elevation 1:100		Elevation 1:100		Elevation 1:100		Elevation 1:100		
Item 1	Door Location	EXTERNAL ABILUTION DOORS	QUANTITY X 2	ALL INTERNAL TOILET OUTLETS DOOR	QUANTITY X 08	PARAPINGG TOILET DOOR	QUANTITY X 06	ENTRANCE GATE	QUANTITY X 02
Item 2	Door Description	815mm x 2025mm x 46mm thick heavy duty Salagra Black (1) Single layer water resistant vinyl, 2. Strong hardwood under door filled to comply with SABS 545 x 1 pre-pressed steel frame. All painted in accordance with Architect's colour schedule.		815mm x 2025mm x 46mm thick heavy duty EXTERIOR QUALITY hardwood under door filled to comply with SABS 545 x 1 pre-pressed steel frame. All painted in accordance with Architect's colour schedule.		815mm x 2025mm x 46mm thick heavy duty Salagra Black (1) Single layer water resistant vinyl, 2. Strong hardwood under door filled to comply with SABS 545 x 1 pre-pressed steel frame. All painted in accordance with Architect's colour schedule.		Pre-treated mild steel gate consisting of 10x10mm mild steel bars spaced at 100mm centres at 45° angle, colour to architect's specification, to comply with SABS 681, grade 1, and finish with two (2) coats alkylde egg shell paint to comply with SABS 630.	
Item 3	Frame	Standard 1.6mm in pre-painted Galvalume mild steel door frame with profile 115mm x 2025mm x 46mm. It comply with SABS 681, grade 1, and finish with two (2) coats alkylde egg shell paint to comply with SABS 630, type 1.		Standard 1.6mm mild steel double rebate pre-painted metal frame (115mm x 2025mm x 46mm) comply with SABS 681, grade 1, and finish with two (2) coats alkylde egg shell paint to comply with SABS 630, type 1.		Standard 1.6mm mild steel double rebate pre-painted metal frame (115mm x 2025mm x 46mm) comply with SABS 681, grade 1, and finish with two (2) coats alkylde egg shell paint to comply with SABS 630, type 1.		50 X 50mm in mm square tube welded to form frame.	
Item 4	Frame Finish	Washable enamel paint finish complying with SABS 723 for primer, SABS881 for undercoat and SABS 630 type 2 for finish coat. Colour to architect's approval.		Washable enamel paint finish complying with SABS 723 for primer, SABS881 for undercoat and SABS 630 type 2 for finish coat. Colour to architect's approval.		Washable enamel paint finish complying with SABS 723 for primer, SABS881 for undercoat and SABS 630 type 2 for finish coat. Colour to architect's approval.		X'teel Zinc Chromate primer 2.80x grey enamel (isobutyl quality)	
Item 5	Door Finish	Prime with wood primer to comply with SABS, type 2. Paint one (1) Universal under coat to comply with SABS 681, grade 1, and finish with two (2) coats alkylde egg shell paint to comply with SABS 630, type 1. Colour to architect's approval.		Prime with wood primer to comply with SABS, type 2. Paint one (1) Universal under coat to comply with SABS 681, grade 1, and finish with two (2) coats alkylde egg shell paint to comply with SABS 630, type 1. Colour to architect's approval.		Prime with wood primer to comply with SABS, type 2. Paint one (1) Universal under coat to comply with SABS 681, grade 1, and finish with two (2) coats alkylde egg shell paint to comply with SABS 630, type 1. Colour to architect's approval.		Prime with wood primer to comply with SABS, type 2. Paint one (1) Universal under coat to comply with SABS 681, grade 1, and finish with two (2) coats alkylde egg shell paint to comply with SABS 630, type 1. Colour to architect's approval.	
Item 6	Fan Light	NONE		NONE		NONE		NONE	
Item 7	Ironmongery	75mm Four lever security lockset with satin chrome/brunze. Door stop - polished brass floor mounted. AL052-2145 100 x 150mm metal engraved aluminium indicator plate with engraved female symbol		Asia Alloy Union Satin Chrome Indicator Bat 3C Plead PRP 75mm Four lever security lockset with satin chrome/brunze. Door stop - polished brass Wd mounted.		ASDA Alloy UNICORND RASO CLAMP EN 3-6 DA SL UNION L2115-7858R EffPro Cylinrod Cade Lock with Roller Latch UNION 2565AS Padlock Handle Indictor Bat AS UNION 25555MD Single Cylinder Profile MD Lock SL PHD-CF-300-225 58 BT Hinges with Flange Bat Flange 300mm Centre 22mm Diameter		Prime with wood primer to comply with SABS, type 2. Paint one (1) Universal under coat to comply with SABS 681, grade 1, and finish with two (2) coats alkylde egg shell paint to comply with SABS 630, type 1. Colour to architect's approval.	
Item 8	Hinges	3 no. stainless steel medium duty butt hinges.		3 no. stainless steel medium duty butt hinges.		3 SP-OF-HINGE HEAVY DUTY HINGES BY OTHER MANUFACTURERS		3 SP-OF-HINGE HEAVY DUTY HINGES BY OTHER MANUFACTURERS	

PLUMBING SCHEDULE / BLOCK		
ITEM	DESCRIPTION	QUANTITY
Wash Urn/ Urinal	LAVATERALLWUNG BOWL URINAL PRODUCT CODE 70542/70542T DESCRIPTION: Wash Urinal/ Urinal with ceramic bowl with top inlet (code 70542B) and back inlet (code 70542T). Overall size 600 x 385 x 380 mm. Top inlet fittings (code 70542T) and back inlet fittings (code 70542C) include a 18 mm x 1/2" demical grating, a spigard (with a 20 mm diameter thread), and two brackets. No Trap Req	00
Standard Toilet Seat	Atlas Plastic "WIP 200 PEDESTAL (Granite Color) 280mm x 466mm - 518 mm complete with over lock, to be plugged into CER/ABBS-V1 (code FQ-1040) System	07
Junior Toilet Seat	Atlas Plastic "RAMBI LONG DROW Junior Pan (Granite Color) 282mm x 301mm x 300 mm complete with over lock, to be plugged into: Envo-Loo CER/ ABBS-V1 (code FQ-1040) System	02
Jojo Tank Tap	Jojo Plastic Water Tank 20mm Heavy Duty PVC Tummy Tap A Reducer kit, including extension pipe where required	02
Peraplegic Tap	Cobra Taps (T & Mores) COB-55/56-1 Medical Wash Basin Taps - Pillar Taps Chromobronze Offset, Square type, 1/4" jaw ceramic disc; Blue, Indigo, 1/8" BSP MI SANS 222 TYPE 1; 200mm x 100mm x 100mm. Ideal for medical, kitchen and installations.	04
Standard Taps	CORBA Wall Mounted 85mm popper Commercial /dear for BID Taps - CHROME Vented, Colours (SKU: FSBANTAP) 100mm x 100mm with 1.5m 1/2" male inlet. Diameter 30mm Top to Deck Height: 240mm. including all Plumbing, valves and fittings.	04
Troughs & Drainage	1665 mm x 650 mm x 9mm outdoor commercial Linen Concrete Wash Trough Drainage (1055mm) SABS Approved	03
Wash Hand Basin	Granite colour: Christy Linenwash basin 570 x 400 x 245mm with one tap hole, with moulded in soap holder, with splashback. Sample to be approved by Architect	03

[illegible]