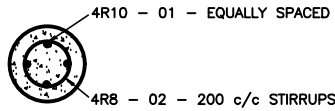


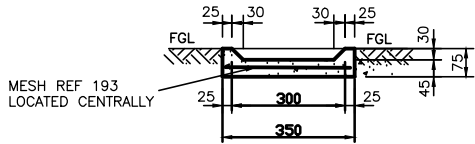
NOTE :

1. STANDPIPE POSITION TO BE JOINTLY DETERMINED BY PROJECT STEERING COMMITTEE ,  
SOCIAL CONSULTANT AND ENGINEER ON SITE.
2. STANDPIPE ORIENTATION TO BE DETERMINED BY ENGINEER ON SITE TO SUIT  
DRAINAGE OF INSTALLATION.
3. ALL SHARP EXPOSED CONCRETE EDGES TO BE CHAMFERED 20mm x 20mm

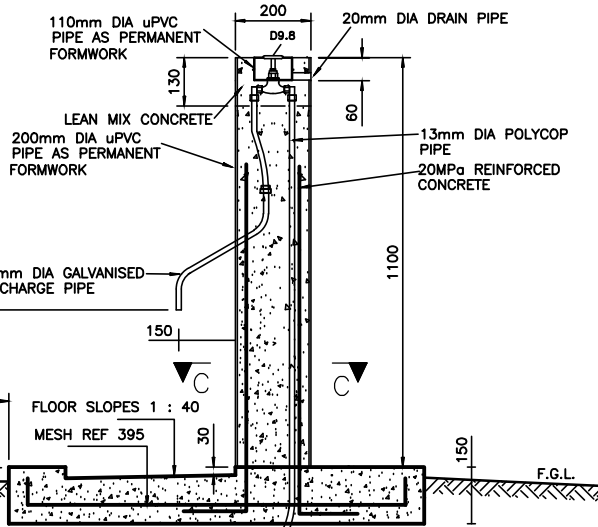
ITEM No.	DESCRIPTION	No. OFF
D.9.1	15mm MALE / FEMALE BALLSTOP VALVE 1200kpa	1
D.9.2	15mm MALE IRON / FEMALE COPPER COUPLING	2
D.9.3	15mm FEMALE / FEMALE BALLSTOP VALVE 1200kpa	1
D.9.4	15mm THREADED FEMALE STRAINER	1
D.9.5	15mm GALV. IRON MALE NIPPLE	2
D.9.6	15mm THREADED PRESSURE REDUCING VALVE WITH ADJUSTABLE DOWNSTREAM PRESSURE SETTING 400 – 1200kpa	1
D.9.7	15mm x ½" COPPER TO FEMALE IRON COUPLER	1
D.9.8	15mm BRASS MALE BIP COCK CODE 121 – COBRA TYPE	1
D.9.9	15mm MALE KENT FLOW METER	1



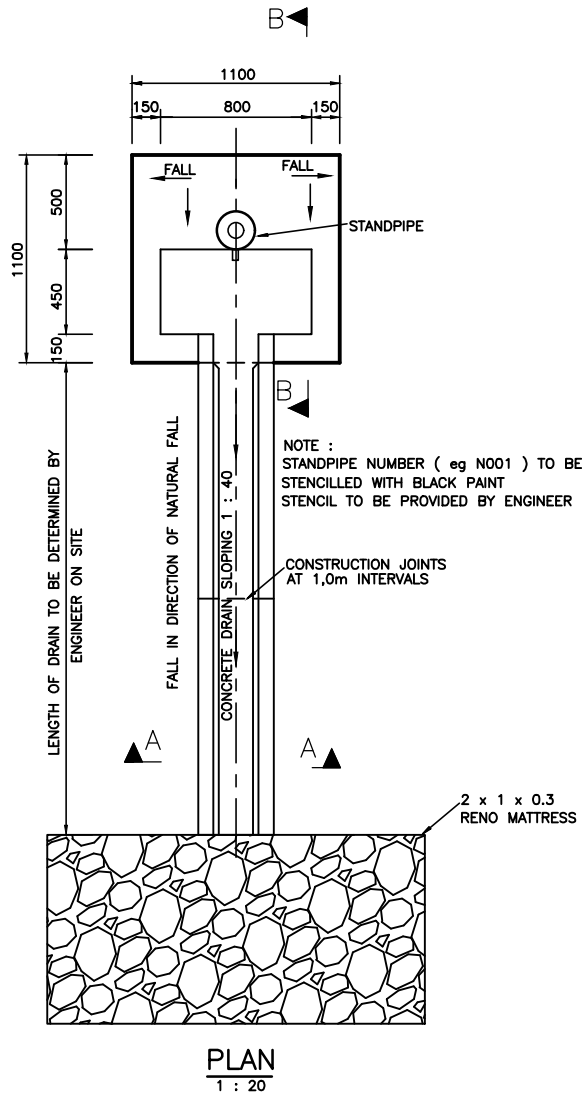
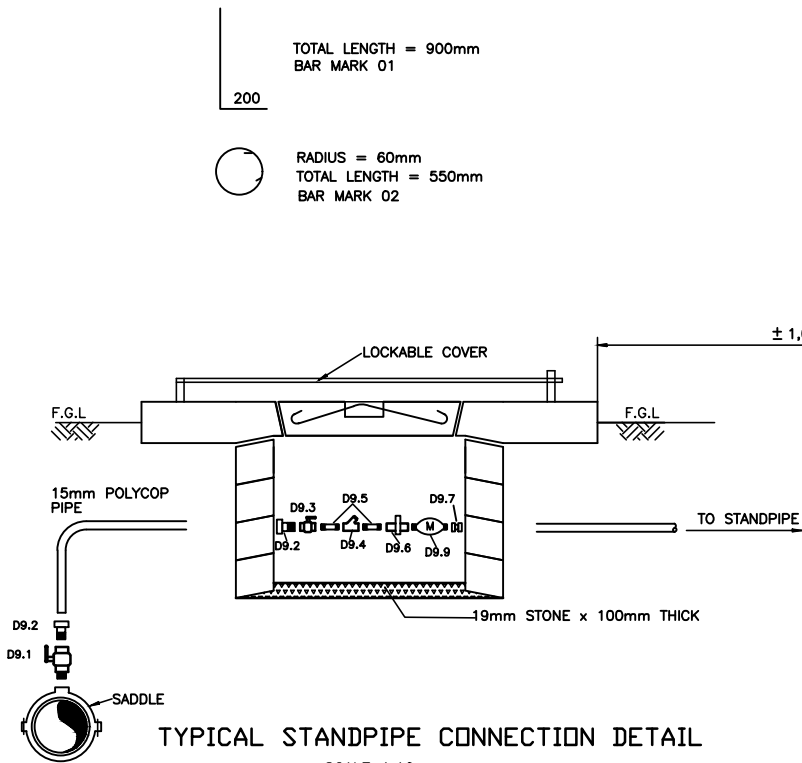
SECTION C - C  
SCALE 1:10



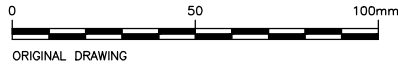
SECTION A - A  
SCALE 1:10



SECTION B - B  
SCALE 1:10



PLAN  
1 : 20



DRAWING STATUS  
ISSUED FOR CONSTRUCTION

ORIGINAL SCALE  
AS SHOWN ON A1

ALT. DWG. No.	CONTRACT No.
	MW/BBB
SHT. No.	PROJECT No.
	J154

DRAWING No.	REVISION
J154-D06	0

No.	REFERENCE DRAWINGS

0	ISSUED FOR TENDER	02/23	GM	SM
1	REVISIONS	DATE	CHKD	APPRV
	ONLY REVISIONS MARKED THUS ARE VALID			

DESIGNED	G. MLAMBO
CHECKED	B. MLALAZI
DRAWN	T. MAZIBUKO
CHECKED	G. MLAMBO
PROJ. ENG.	G. MLAMBO

TEL: (033) 346 0689  
FAX: (033) 346 0692  
E-mail: ziyanda@ziyandaconsulting.co.za

APPROVED :  
S. MGUTSHINI  
(PR ENG REG. No. 20040208)

PO BOX 809  
HILTON  
PIETERMARITZBURG  
3245

CLIENT:

APPROVED :

IMPLEMENTING AGENT:

APPROVED :

PROJECT/DRAWING TITLE MHLATHUZE WATER  
WATER INTERVENTIONS FOR HOT SPOT AREAS  
UMHLABUYALINGANA MUNICIPALITY  
CONSTRUCTION OF 50-150KL PREFABRICATED ELEVATED STEEL  
RESERVOIRS, BULK AND RETICULATION PIPELINES AND BOREHOLE  
DRILLING IN WARDS 2, 5 AND 6 UNDER THE UMHLABUYALINGANA  
MUNICIPALITY  
STANDPIPE DETAILS