



PIKITUP JOHANNESBURG SOC LIMITED

REQUEST FOR INFORMATION FROM RESPONDENTS ON THE DEVELOPMENT AND OPERATIONS OF WASTE TRANSFER, LONG-HAUL AND DISPOSAL AT LEGALLY COMPLIANT LANDFILLS IN LINE WITH PIKITUP'S WASTE MANAGEMENT AND MINIMIZATION STRATEGY

REFERENCE NO: RFI/001/2022

CLOSING DATE: 11 JULY 2022

CLOSING TIME: 11:00AM

VENDOR NAME:

Technical queries:

Technical queries relating this RFI must be e-mailed to samumkhize@pikitup.co.za

Note:

- No information or briefing session will be held for this RFI.
- Queries should be e-mailed no later than 5 July 2022.
- All correspondence relating to this RFI must quote the relevant RFI reference number.

Technical / Scope Related Queries:

Technical contact person: Samukelisiwe Mkhize

E-mail: samumkhize@pikitup.co.za

RFI responses:

RFI responses must be e-mailed to mornekoortzen@pikitup.co.za before the closing date and time as specified above.

The reference # and the respondent's company name must be specified in the e-mail subject.

(i.e. RFI/001/2022 – ABC Industries Pty Ltd)

E-mail responses to the RFI should be limited to a maximum file size of 10MB per e-mail

RFI Responses:

SCM contact person: Morne Koortzen

E-mail: mornekoortzen@pikitup.co.za

TABLE OF CONTENTS

RESPONDENT INFORMATION	ANNEXURE 1
CONDITIONS OF RFI	ANNEXURE 2
RFI SCOPE	ANNEXURE 3

ANNEXURE 1

RESPONDENT INFORMATION

RESPONDENT INFORMATION

YOU ARE HEREBY INVITED TO PROVIDE INFORMATION TO PIKITUP JOHANNESBURG SOC LIMITED AS PER THE SCOPE OF THIS RFI

NOTE:

- RFI RESPONSES MUST BE IN ELECTRONIC FORMAT, AND RESPONSES MUST BE E-MAILED PRIOR TO THE CLOSING TIME ON THE CLOSING DATE.
- NO LATE RESPONSES (I.E. AFTER THE CLOSING TIME AND DATE) WILL BE CONSIDERED.
- RFI RESPONSES MUST BE LIMITED TO A MAXIMUM FILE SIZE OF 10 MEGABITES (MB) PER E-MAIL.
- PIKITUP WILL CONFIRM RECEIPT OF E-MAIL RESPONSES WITHIN 24 HOURS OF RFI CLOSING DATE AND TIME

RESPONDENT INFORMATION

NAME OF COMPANY				
COMPANY REGISTRATION NUMBER				
STREET ADDRESS				
CONTACT PERSON				
DESIGNATION				
TELEPHONE NUMBER	CODE		NUMBER	
CELLPHONE NUMBER				
E-MAIL ADDRESS				
B-BBEE STATUS LEVEL (I.E. 1 - 9)				
NATIONAL TREASURY CENTRAL SUPPLIER DATABASE	CSD No:			

SIGNATURE:

CAPACITY UNDER WHICH THIS DOCUMENT IS SIGNED:

DATE:

ANNEXURE 2

TERMS AND CONDITIONS OF THE REQUEST FOR INFORMATION (RFI)

TERMS AND CONDITIONS OF REQUEST FOR INFORMATION (RFI)

Timelines for RFI activities

- RFI Advertise date – 10 June 2022
- RFI Last date / deadline for questions – **5 July 2022** at close of business day
- RFI Closing date for responses – **11 July 2022 at 11:00am**

Clarifications and enquiries

- Formal enquiries and clarifications with respect to this RFI should be submitted to the Pikitup Official(s) as indicated on the cover page of this RFI

Technical queries relating to this RFI must:

- Be e-mailed to samumkhize@pikitup.co.za
- Be e-mailed no later than 5 July 2022. Queries received after the deadline will not be considered.
- Specify the RFI reference number (i.e. RFI/001/2022) in the subject of the e-mail.

Responses to the RFI must:

- Be e-mailed to mornekoortzen@pikitup.co.za
- Be e-mailed no later than 11:00am on 11 July 2022.
- Specify the RFI reference # (i.e. RFI/001/2022) and the responding company name in the subject of the e-mail.

The following terms and conditions are applicable to this RFI

- The purpose of this Request for information (RFI) to gather information for the works/goods/services as stated in the scope of this document.
- This RFI is a stand-alone information-gathering and market-testing exercise, intended to inform and assist Pikitup with research, planning and development.
- No obligation or commitment on the part of either the respondent or Pikitup as a result of this RFI
- Where cost estimates are provided, the information could be used for planning or budget purposes
- Respondents should ensure that the response is structured in a logical manner giving clarity on the sections in the technical information and scope.
- The information provided must be presented in a format that corresponds to and reference to sections outlined within this RFI.
- Any irregularities or lack of clarity in the RFI should be brought to Pikitup's attention as soon as possible to enable Pikitup to respond accordingly to prospective respondents.
- Responses to this RFI will be kept confidential and not be available for public knowledge
- Pikitup may use the information from this RFI to advance business strategy, identify future projects, develop tender (RFP) specifications / terms of reference, budget planning and / or any other purpose that might be deemed fit
- The RFI process will not lead to an award and does not constitute a procurement commitment.
- Pikitup reserves the right to use the information from this RFI or to stop this process.
- Pikitup reserves the right to engage with respondent(s) after the RFI closing date to obtain clarity or additional information relating their RFI response(s).

I the undersigned, (Name and Surname),
are being the duly authorised undersigned representative of the responding organisation and I
acknowledge the RFI terms and conditions.

AUTHORISED SIGNATURE :

CAPACITY OF SIGNATORY :

RESPONDENT COMPANY NAME :

DATE :

RFI/001/2022 - REQUEST FOR INFORMATION FROM RESPONDENTS ON THE DEVELOPMENT AND OPERATIONS OF
WASTE TRANSFER, LONG-HAUL AND DISPOSAL AT LEGALLY COMPLIANT LANDFILLS IN LINE WITH PIKITUP'S WASTE
MANAGEMENT AND MINIMIZATION STRATEGY

ANNEXURE 3.

RFI SCOPE

SPECIFICATION: REQUEST FOR INFORMATION FROM RESPONDENTS ON THE DEVELOPMENT AND OPERATIONS OF WASTE TRANSFER, LONG-HAUL AND DISPOSAL AT LEGALLY COMPLIANT LANDFILLS IN LINE WITH PIKITUP'S WASTE MANAGEMENT AND MINIMIZATION STRATEGY.

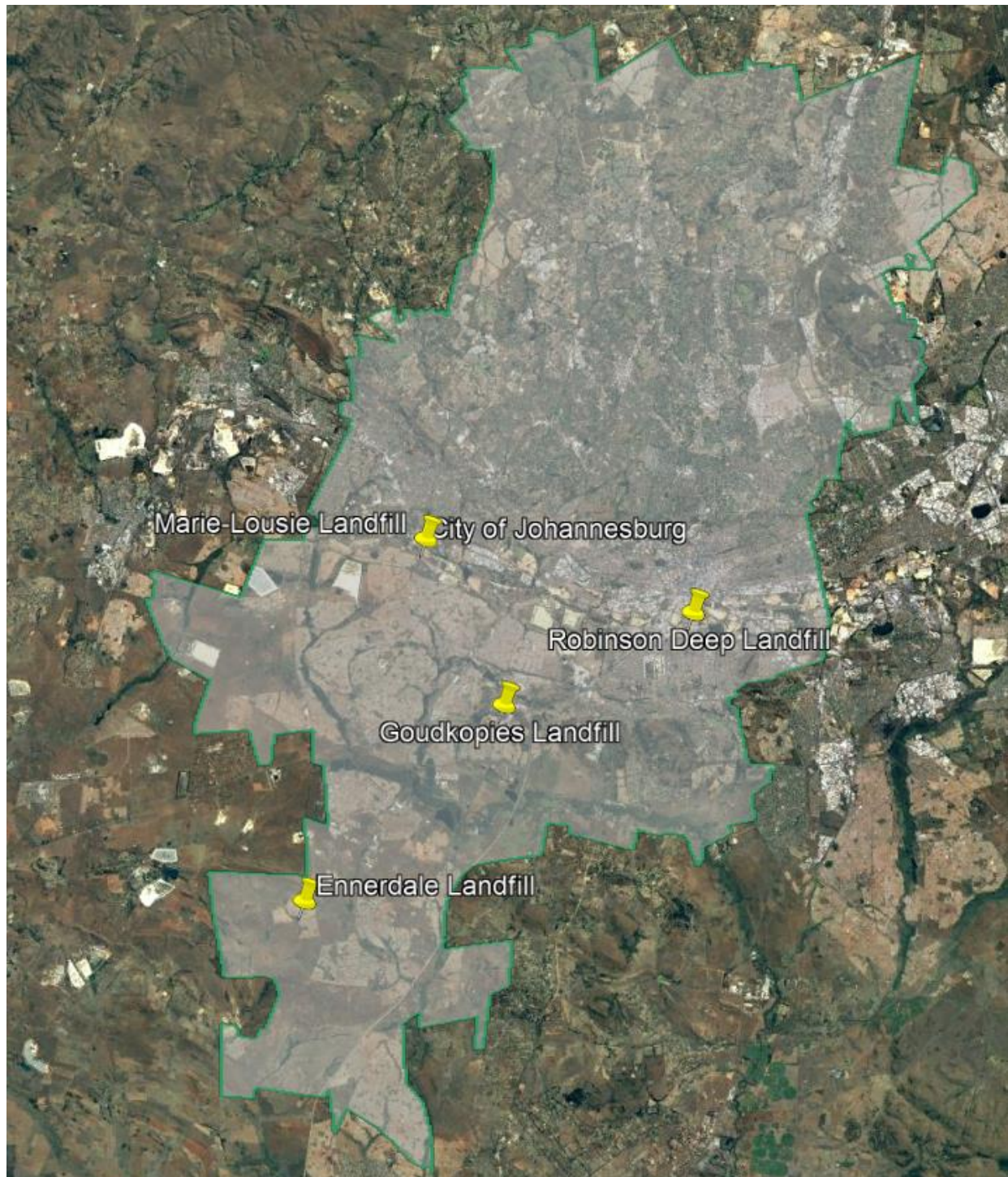
1. BACKGROUND

Pikitup Johannesburg (SOC) Limited ('Pikitup' or 'the Company') was established in 2001 as an independent municipal entity, wholly owned by the City of Johannesburg, to serve and provide waste management services for the Johannesburg area. Pikitup provides two categories of services, viz. council services and commercial services, as summarized in the table below:

Council services CoJ mandated services	Commercial services
<ul style="list-style-type: none"> ▪ Collection and disposal of domestic waste; ▪ Street cleaning in the Inner City, Central Business District areas, Outer City and Hostels – the activity ranges from litter picking, street sweeping and lane flushing; ▪ Management and distribution of litter bins; ▪ Collection of illegally dumped waste; ▪ Collection and disposal of animal carcasses found in public places; ▪ Operation of garden sites; ▪ Operation and management of landfill sites; ▪ Cleaning of informal settlements; ▪ Recycling activities. 	<ul style="list-style-type: none"> ▪ Bulk collection services; ▪ Dailies – collection of putrescible food waste; ▪ General business waste; ▪ Services for special events; ▪ Private waste management operators and members of the public pay disposal fees for waste disposal at Pikitup's landfill sites

Pikitup executes its mandate to the City and its residents through twelve depots, and four waste disposal facilities (landfill sites) viz. Marie Louise, Robinson Deep, Goudkoppies and Ennerdale, and a network of more than forty garden sites/drop-off facilities that receive and store green waste and various other types of recyclable/disposable general waste. The locations of the four waste disposal facilities are shown in Figure 1 below.

Figure 1: Location of operational Pikitup waste disposal facilities in the City of Johannesburg



The strategic focus adopted by Pikitup is first and foremost to encourage waste prevention and minimisation that is integrated with a community-driven approach. This is in line with the National Waste Management Strategy (NWMS), The City of Johannesburg (CoJ) Integrated Waste Management Plan (IWMP), and Growth and Development Strategy (GDS) 2040.

Pikitup's primary mandate is to provide sustainable integrated waste management services to all residential (formal and informal areas) and businesses in the CoJ. The mandate also includes the provision of services to ensure the overall cleanliness of the City's streets, open spaces, and public areas.

The entity continues to put effort into implementing waste minimisation projects to divert waste from landfills - including diversion of general household waste, green/garden waste as well as construction and demolition waste. However, the estimated diversion through these programmes is less than 10% of the waste handled by Pikitup, resulting in large amounts of residual waste being collected and transported to the landfills.

The remaining available airspace (disposal capacity) at the CoJ's landfills is limited, with two operational landfills (Marie Louise and Robinson Deep) expected to reach full capacity imminently (Marie Louise in Q1 2023 and Robinson Deep in mid-2024).

In order to maintain the required levels and standards of waste management services rendered to residents and businesses in the CoJ, it is Pikitup's intention to develop waste transfer stations (WTSs) at the Marie Louise and Robinson Deep waste disposal facilities within the next 10-28 months, and possibly also at a third site in the CoJ. It is proposed that these WTSs accept and manage all waste categories currently disposed at the respective landfills, in the quantities (tonnages) as set out in Table 1 below. Note that these tonnages are indicative only and actual tonnages could vary between 25% higher, and 25% lower, than the indicative tonnages.

Table 1: Indicative monthly and weekly waste tonnages at Marie Louise and Robinson Deep WTSs¹

Source	RCR (compacted general waste)	Uncompacted waste (domestic, commercial & industrial)	Illegal dumping wastes	Construction rubble (clean & mixed)	Greens waste	Totals
Marie Louise						
Pikitup	16,400t	2,000t	9,300t	0t	800t	28,500t
Other	0t	1,900t	0t	2,400t	900t	5,200t
Totals (monthly)	16,400t	3,900t	9,300t	2,400t	1,700t	33,700t
Totals (weekly)	3,800t	900t	2,100t	600t	400t	7,800t
Robinson Deep						
Pikitup	8,200t	1,700t	200t	0t	4,700t	14,800t
Other	0t	23,000t	0t	1,000t	3,300t	27,300t
Totals (monthly)	8,200t	24,700t	200t	1,000t	8,000t	42,100t
Totals (weekly)	1,900t	5,700t	0t	200t	1,800t	9,600t

The main purpose of Request of Information (RFI) is to identify opportunities for the design, construction, and operation of the WTS including the transfer of waste, long-haul of waste and final disposal of waste. Key aspects that need to be considered for the RFI are as follows:

- Design and construction of WTS;
- Classification of waste, storage, and transportation to relevant facilities;
- Key equipment and technologies for operation of the WTS;
- Operations and maintenance of WTS;
- Key vehicles for transportation of disposed and diverted waste;
- Final disposal or off take facilities.

2. PURPOSE OF THE REQUEST OF INFORMATION (RFI)

Transfer stations are commonly used as multi-purpose facilities that include storage of recyclable materials, waste collection depots and in some cases collection points for organic materials destined for composting sites. A variety of issues must be considered during the planning phases of a solid waste transfer station, such as environmental, social, and economic.

This RFI has been prepared for the following purposes:

- a) To assess market interest, as well as seek further information from organisations (including joint ventures) that can provide the services required by Pikitup, as set out herein;

¹ These estimates are as at August 2021 and are subject to revision.

- b) To assess the short-, medium- and long-term availability of *legally compliant (Class B) landfill airspace* in Gauteng, as well as within a financially viable long-haul distance from the proposed Pikitup waste transfer facilities in Gauteng.
- c) To assess the short-, medium- and long-term availability of legally compliant drop-off facilities for recyclable waste.
- d) To establish if there are any needs from the proponents for additional infrastructure/plant to be provided by Pikitup for the execution of the work, keeping in mind that one of the main objectives is for proponents to supply, operate and maintain all moveable assets required for the transfer and long haul of waste.
- e) To establish if there is any interest from proponents for alternative business models - other than the standard 3-year contracts awarded for the outsourcing of municipal services. Although this will require that the necessary legal processes be followed by Pikitup, this may include longer-term contracts (say 5-year), Public-Private Partnerships (PPP), etc.

The technology proposed in the RFI should be:

- a) Relatively simple to implement in Johannesburg / South Africa;
- b) Comply to South African environmental regulations and to the CoJ Waste By-laws;
- c) Support the empowerment of local communities (i.e. local economic development) through job creation, skills development, and enterprise development. Also includes waste picker empowerment.
- d) Have no undesirable effect on the environment (e.g. climate change, environmental pollution, etc.).
- e) Respondents should note that one of the key objectives of this RFI is to identify proposed waste solutions that, if implemented, would translate into significant cost savings/new revenue stream for PIKITUP.

3. INFORMATION REQUIRED

Method statements are hereby requested from qualified waste management Respondents (including joint-ventures) ('Respondents') to provide information on the following items:

3.1 Proposed high-level design and structure proposal including but not limited to:

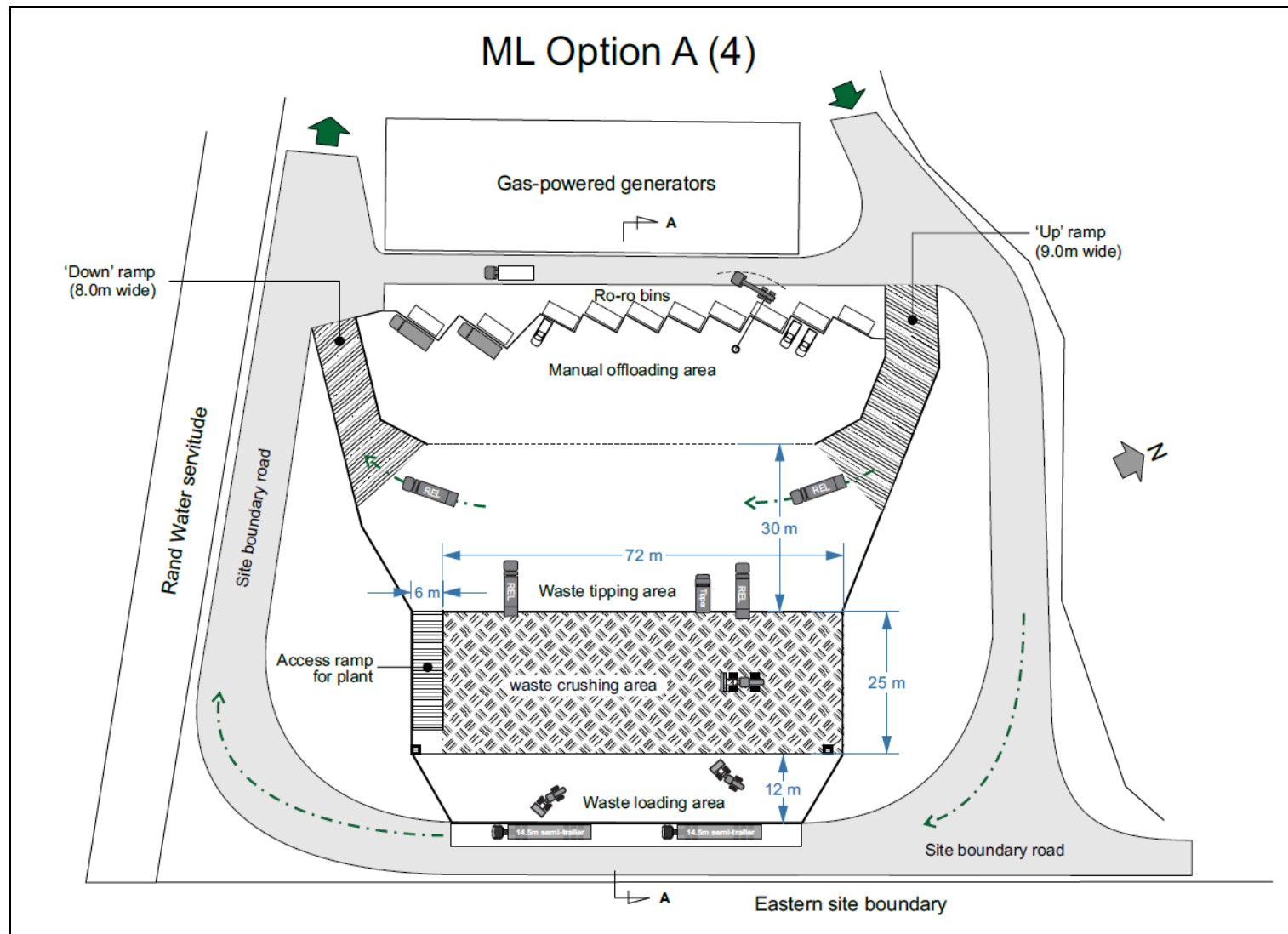
- a) A detailed evaluation of future needs based on waste volumes (Table 1), a typical planning horizon for transfer stations are 20 to 30 years;
- b) Establishing appropriate zoning setbacks or potential future development on adjacent property.
- c) The design criteria for longevity of the facility and its components, allowing for planned expansion. The WTS should typically include the following features:
 - A primary building/warehouse: Including tipping floor, sorting areas, conveyer belts, bailer machines etc. Including space for future expansion of the primary building;

- A holding area: for inspection of incoming loads and holding inappropriate waste loads or materials for removal;
- Road network: including entrance and exit points for waste arriving and departing.
- Buffer areas: open space landscaping, trees, berms etc. in efforts to reduce impacts/nuisance on the community;
- Weighbridge area: where incoming and outgoing loads are weighed;
- Recyclable materials storage area: where recyclable material bales are stored for transportation to their destinations;
- Residual waste storage area: where the receptacles/skip bins for residual waste to be taken to landfill are stored;
- Pikitup's intention is to divert dry recyclable waste, green waste and clean construction and demolition waste coming into the WTS;
- It is necessary to have a clear understanding of where the materials collected at the facility will be transferred to;
- Provision should be made for stockpiling and temporary storage of all waste in the WTS in the event of interruptions in the transfer and long-haul of waste.

Manual offloading area (MOA)

It is envisaged that there will be two components to the WTS, a mechanical discharge area and manual offloading area' (MOA). Waste requiring manual offloading from small or large vehicles, including construction and demolition waste, greens waste, etc. will be directed to the separate 'manual offloading area', where it will be offloaded from vehicles directly into roll-on roll-off (ro-ro) containers, skips or similar bulk containers. Waste from large vehicles may be manually offloaded from where it will be loaded by means of a front-end loader into bulk long-haul containers. A high-level design of the envisaged WTS reflects in the figure below and is to be utilised as guidance by Respondents. It is envisaged that the bulk WTS facility will be suitably covered / roofed to minimise the effect of rain, wind etc. on the temporary storage and transfer of waste.

Figure 1: Concept layout of WTS



3.2 All aspects of the operation of the WTSs

Respondents must compile a high-level operation plan including but not limited to:

- a) Access control measures and movement of vehicles in WTS;
- b) Transferring of all incoming waste form to suitable long-haul vehicles at a rate that ensures that all waste received (see Table 1) at the bulk WTS and at the manual offloading area is transferred and removed from the site over a 48-hour cycle;
- c) Operation and maintenance plan including all vehicles, mobile plant, and equipment (including bulk containers) required for the transfer of residual and recyclable waste;
- d) Proposed plan should ensure that any tracked vehicles, landfill compactors, etc. are moved and operated in a way that causes minimum damage to roadways, ramps, and other hard surfaces. Such plant must be 'walked' into position on the crushing/shredding pad over old tyres, timber poles/planks, conveyor belting, etc.;
- e) Personnel required for effective functioning of the WTSs including but not limited to supervisors, drivers, plant operators, weighbridge operators, clerks, 'spotters' (to direct incoming trucks), general workers;
- f) Proposed activities to maximise diversion of builder's rubble, dry and green waste. This may entail crushing and screening of construction and demolition waste (C&DW); shredding and composting of greens waste; recovery of source separated recyclables from the general (household) waste stream. (Note that there are limitations in respect of the extent that such related services can be accommodated on CoJ land at or near the WTS sites, amongst others due to space limitations.)
- g) Proposed plan for waste picker activity integration.

3.3 All aspects of waste long-haul and final disposal/off-take.

Respondents must compile a high-level long-haul plan including but not limited to:

- a) Suitable types and numbers of open long-haul vehicles (including bulk containers where applicable) of a suitable size for effective transport of all disposal or diverted waste;
- b) Required personnel for long-hauling;
- c) Proposed destination landfill(s) to be utilised for final disposal, suitably licensed by the relevant regulating authorities;
- d) Destination drop off facilities or processing facilities for recyclable waste (dry, green and builder's rubble);
- e) Maintaining accurate records of all types and tonnages of waste disposed, as recorded at weighbridges located at the destination landfill(s) for comparison with tonnages recorded at the TS weighbridge.

4 RESPONSE FORMAT

This RFI aims to assess market interest and readiness to provide *legally compliant* general waste transfer, waste long-haul and waste disposal services to Pikitup. Respondents are required to provide sufficiently detailed responses demonstrating a clear understanding of the requirements of the project as per the RFI. Pikitup would prefer responses from companies or Joint Ventures which encompass all required services (design, construct, operate, transfer, long-haul and disposal). However, if Respondents feel that they can only provide a portion of the service to Pikitup, this should be clearly detailed. Respondents are requested to include as a minimum the following in their responses:

4.1 Cover Page

The cover page must clearly indicate the RFI reference number, RFI description and the Respondent's name, contact person and contact details.

4.2 Index Page

An Index Page must be included that clearly lists the various sections of the document for ease of reference.

4.3 Understanding of the project brief

Respondents are to provide a brief description, clearly indicating the Respondent's understanding of the RFI, and the proven competence of the Respondent to provide the necessary services.

4.4 Company profile and experience

Respondents to provide details on company registration. In the case of a Joint Venture, details for all partners are to be provided. Respondents to provide supporting documentation, including a company profile (or profiles in cases where the Respondent is a Joint Venture) with project references demonstrating the rendering of the same or similar services to public or private waste generators in South, or Southern Africa should be appended.

4.5 The proposed solutions

Respondents are requested to submit responses in accordance with the following structure.

Component	Respondent's information	
	Proposed Marie Louise WTS	Proposed Robinson Deep WTS
a) High level design and proposed physical features of WTS	<ul style="list-style-type: none"> Design criteria as per requirements stated in 3.1 above. 	<ul style="list-style-type: none"> Design criteria as per requirements stated in 3.1 above
b) Operation of waste transfer station; including manual offloaded vehicles and public drop-off facility,	<ul style="list-style-type: none"> High-level operational plan as per 3.2 requirements. Type (make and model) of proposed machinery. Type (make, model, year & bucket capacity) and number of wheeled-loaders proposed Are the wheeled-loaders described above already owned by Respondent, or will they be purchased / leased specifically for this purpose? Type (make, model, year & mass/weight) and number of bulldozers / small waste compactors proposed Are the bulldozers / waste compactors described above already owned by Respondent, or will they be purchased / leased specifically for this purpose? Type (make, model, year & capacity) of equipment required for cleaning operations Type and number of bulk waste containers proposed for waste disposed at manual off-loading and public drop-off facilities Anticipated personnel complement per operational shift, by category 	<ul style="list-style-type: none"> High-level operational plan as per 3.2 requirements. Type (make and model) of proposed machinery. Type (make, model, year & bucket capacity) and number of wheeled-loaders proposed Are the wheeled-loaders described above already owned by Respondent, or will they be purchased / leased specifically for this purpose? Type (make, model, year & mass/weight) and number of bulldozers / small waste compactors proposed Are the bulldozers / waste compactors described above already owned by Respondent, or will they be purchased / leased specifically for this purpose? Type (make, model, year & capacity) of equipment required for cleaning operations Type and number of bulk waste containers proposed for waste disposed at manual off-loading and public drop-off facilities Anticipated personnel complement per operational shift, by category
c) Long-haul of waste to destination landfill/alternative landfill	<ul style="list-style-type: none"> High-level operational plan as per 3.3 above. Type, capacity (volume & mass) and number of vehicles/combinations proposed for waste long-haul Are the above vehicles already owned by Respondent, or will they be purchased/leased specifically for this purpose? Earliest date of potential 	<ul style="list-style-type: none"> High-level operational plan as per 3.3 above. Type, capacity (volume & mass) and number of vehicles/combinations proposed for waste long-haul Are the above vehicles already owned by Respondent, or will they be purchased/leased specifically for this purpose? Earliest date of potential commencement of rendering of

	commencement of rendering of service	service
d) Destination Class B landfill; and alternative Class B landfill	<ul style="list-style-type: none"> Name, location, classification, and ownership of proposed destination landfill; and alternative landfill Proposed legal relationship between waste transporter and landfill owner (if not the same party) Available airspace at the above landfills at the date of response Are landfills operational at the date of response? If not, when are they due to become operational? What proportion (if any) of available airspace is already contractually committed to other municipal/private entities? (Table 2 below to be completed.) Are landfills legally compliant / will landfills be legally compliant in all respects at the date of receiving waste from Pikitup? 	<ul style="list-style-type: none"> Name, location, classification, and ownership of proposed destination landfill; and alternative landfill Available airspace at the above landfills at the date of response Are landfills operational at the date of response? If not, when are they due to become operational? What proportion (if any) of available airspace is already contractually committed to other municipal/private entities? (Table 2 below to be completed.) What are the landfill classifications? Are landfills legally compliant / will landfills be legally compliant at date of operation?
e) Destination drop off facilities for diverted waste	<ul style="list-style-type: none"> Name, location, classification, and ownership of proposed drop off facilities. Proposed legal relationship between waste transporter and drop-off facility owner (if not the same party) Are the drop-off facilities legally compliant in all respects at the date of receiving waste from Pikitup? Proposed waste stream and tonnages to be diverted at the drop-off facility. Proposed frequency of dropping off waste stream. 	<ul style="list-style-type: none"> Name, location, classification, and ownership of proposed drop off facilities. Proposed legal relationship between waste transporter and drop-off facility owner (if not the same party) Are the drop-off facilities legally compliant in all respects at the date of receiving waste from Pikitup? Proposed waste stream and tonnages to be diverted at the drop-off facility. Proposed frequency of dropping off waste stream.
f) Waste not to be accepted	<ul style="list-style-type: none"> List any general waste categories expected not to be accepted at the WTS, and identified landfills drop-off facilities. 	<ul style="list-style-type: none"> List any general waste categories expected not to be accepted at the WTS, identified landfills drop-off facilities.

g) Proposed days and hours of operation (Note: waste is currently accepted at the landfills on weekdays and Saturdays; Pikitup landfills currently operate on all public holidays <u>except</u> Good Friday, Christmas Day and 1 and 2 January)	<ul style="list-style-type: none"> Proposed hours of operation of WTS and long-haul fleet (distinguish between waste receiving, waste transfer and housekeeping) Proposed days of operation (for e.g. weekdays only, weekdays + Saturdays, seven days per week)? 	<ul style="list-style-type: none"> Proposed hours of operation of WTS and long-haul fleet (distinguish between waste receiving, waste transfer and housekeeping) Proposed days of operation (for e.g. weekdays only, weekdays + Saturdays, seven days per week)?
h) General conditions	<ul style="list-style-type: none"> State of readiness to provide the required transfer and long-haul services at the Marie-Louise and Robinson Deep WTSs, by or before Q1 2023 and by or before mid-2024, respectively). Respondents to also indicate if services can be provided at an earlier date or if they can be phased in, and if so, by when and in what manner phasing will be done; Preference on type of contract (short term (3-years), longer-term (specify period), PPP, etc.) Preferred basis of measurement and remuneration for services rendered, viz. (i) unitary rate per tonne for all waste types, or (ii) differentiated rates per tonne for different waste types (Respondent to specify proposed categories) 	<ul style="list-style-type: none"> State of readiness to provide the required transfer and long-haul services at the Marie-Louise and Robinson Deep WTSs, by or before Q1 2023 and by or before mid-2024, respectively). Respondents to also indicate if services can be provided at an earlier date or if they can be phased in, and if so, by when and in what manner phasing will be done; Preference on type of contract (short term (3-years), longer-term (specify period), PPP, etc.) Preferred basis of measurement and remuneration for services rendered, viz. (i) unitary rate per tonne for all waste types, or (ii) differentiated rates per tonne for different waste types (Respondent to specify proposed categories)
i) Other services offered by Respondent	<ul style="list-style-type: none"> Please list the type of service(s) offered, and where service(s) will be carried out Would additional working space and/or fixed infrastructure/plant be required at the WTS site? If so, please elaborate. Are similar services, as listed above, already being rendered to public/private waste generators? If so, please provide the service description and reference details in the supporting documentation. If applicable, what percentage of the waste stream(s) can realistically be diverted from the 	<ul style="list-style-type: none"> Please list the type of service(s) offered, and where service(s) will be carried out Would working space and/or fixed infrastructure/plant be required at the WTS site? If so, please elaborate. Are services listed above already being rendered to public/private waste generators? If so, please provide details in the supporting documentation. If applicable, what percentage of the waste stream(s) can realistically be diverted from landfills through the use/application of the services?

	nominated landfill through use/application of the services?	
j) Additional infrastructure	<ul style="list-style-type: none"> Any additional infrastructure required must be listed 	<ul style="list-style-type: none"> Any additional infrastructure required must be listed
k) High-level financial analysis	<p>The financial analysis should include but not necessarily be limited to the following:</p> <ul style="list-style-type: none"> Detailed design and construction of WTS Operation and Maintenance of Transfer Station (labour, plant and equipment etc.) Waste Long-Haul Costs (labour, trucks and equipment etc.) <ul style="list-style-type: none"> Waste Disposal Costs (also indicate proposed landfill for disposal) Waste diversion costs 	<p>The financial analysis should include but not necessarily be limited to the following:</p> <ul style="list-style-type: none"> Detailed design and construction of WTS Operation and Maintenance of Transfer Station (labour, plant, and equipment etc.) Waste Long-Haul Costs (labour, trucks, and equipment etc.) <ul style="list-style-type: none"> Waste Disposal Costs (also indicate proposed landfill for disposal) Waste diversion costs

Note: Respondents should indicate whether they are responding in full or only partially to Pikitup's requirements as set out in the table above.

5 NOTICE AND DISCLAIMER

- 5.1. This REQUEST OF INFORMATION (RFI) document and any of its parts, as well as any information, advice or data subsequently provided to the Respondent, whether orally or in writing, by or on behalf of PIKITUP Johannesburg SOC Limited, shall be subject to the terms and conditions set out in the RFI or any other specific agreement entered into by the Respondent and PIKITUP.
- 5.2. Upon having access to and receiving any or all of the information contained herein or submitted in writing, the Respondent agrees to comply with all the terms and conditions contained herein.
- 5.3. Each Respondent must make its own independent assessment and investigation of the information contained herein and should not rely on any statement or on the significance, adequacy or accuracy of any information contained in this RFI.
- 5.4. The information contained herein does not purport to contain all of the data that a Respondent may deem necessary to provide its response.
- 5.5. PIKITUP makes no representation or warranty as to the accuracy, completeness, reliability, and timelines of any information contained in this RFI.
- 5.6. PIKITUP shall incur no liability for any statements, opinions, information or matters, expressed or implied, arising out of, contained in or derived from, or any omission from, the information contained in this RFI except in so far as liability under any statute cannot be excluded.
- 5.7. PIKITUP will not be responsible for, nor will it pay for, any costs, expenses or losses which may be incurred by a Respondent or its representatives in conducting their review and evaluation of this RFI.
- 5.8. PIKITUP may, at its absolute discretion, update, amend or supplement the information contained in this RFI.
- 5.9. Neither PIKITUP or the Respondents shall without each other's prior written consent, make use of any document or information originating from either party and used in this RFI except for purposes relating to this RFI. All documents exchanged by the parties and their contents remain the property of that party and shall not be transferred and/or shared with any other third party.