



SOUTH AFRICAN AIRWAYS

A STAR ALLIANCE MEMBER ™

PREMIUM AND BUSINESS CLASS

GLASSWARE

1) Scope

This specification covers the material and design of glassware for South African Airways In-flight Services.

South African Airways operates domestic, regional and international destinations, where glassware is used on board our flights to service our customers.

2) Definitions and Abbreviations

For the purpose of this specification, the following definitions shall apply:

- Acceptable: acceptable to the South African Airways
- Food grade products: Products that do not contain dyes or other chemical compounds that are deemed harmful for human consumption.

3) Items Included in Scope

No	Type
	IN-FLIGHT
1.	Premium Class Flute Glass
2.	Premium Class Goblet
3.	Premium Class Wine Glass
4.	Premium Class Liqueur Glass
5.	Business Class Wine Glass
6.	Business Class Rummer Glass

4) Materials

No materials will be supplied by South African Airways. All materials must be food grade and suitable for industrial catering purposes.

5) Workmanship

Each item shall be:

- Of uniform and acceptable make, colour and finish,
- Dishwasher safe

Shall be free from defects that:

- Affect their appearance
- Affect their serviceability (or both)

6) Design Overview

The products must be designed to perform in a busy catering environment.

The product must have resistance to ensure that the product can withstand at least 5000 dishwasher cycles, product must be designed to fit easily into the dishwasher.

SAA logo to be embossed underneath the bottom of the glass.

7) Material Specification Overview

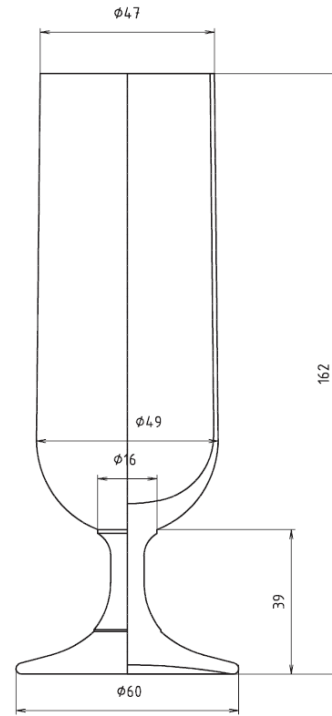
The composition of the glassware must make the glass durable, clear, and easy to work with while being strong enough for everyday use in hospitality settings.

The glass rim must be extra tempered to avoid chipping.

The composition of the current glassware is as follows:

Oxide	Percentage in Glass	Simplified Explanation
SiO ₂	72.34%	Silica – The main component of glass, giving it strength and transparency.
Na ₂ O	10.65%	Sodium Oxide – Makes the glass easier to melt and work with.
K ₂ O	4.82%	Potassium Oxide – Similar to sodium oxide, but helps make the glass more durable.
CaO	6.28%	Calcium Oxide – Adds strength and helps make the glass less prone to breaking.
BaO	4.88%	Barium Oxide – Helps with the clarity and brilliance of the glass.

ITEM 1 - Product Name: Premium Class Flute Glass



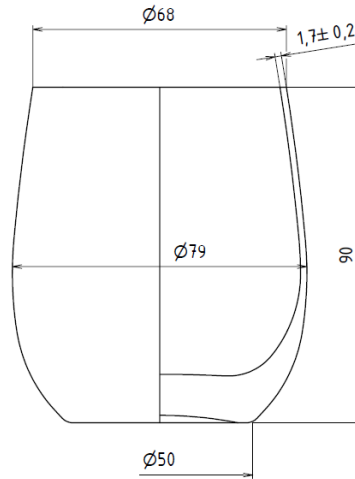
Item Code: SA 1215

Dimensions

Weight:	0.150kg
Height	162mm
Width	47mm top/60mm bottom
Volume	170 ml

The size of the glass is critical

ITEM 2 - Product Name: Premium Class Goblet

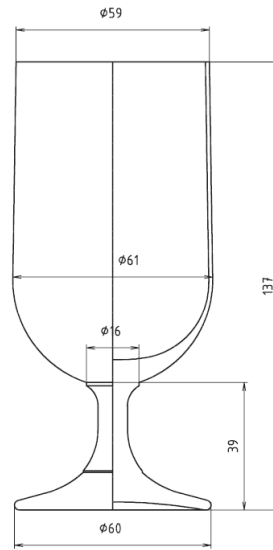


Item Code: SA 1191 Dimensions

Weight:	0.260kg
Height	90 mm
Width	68mm top/50 mm bottom
Volume	250 ml

The size of the glass is critical.

ITEM 3 - Product Name: Premium Class Wine Glass

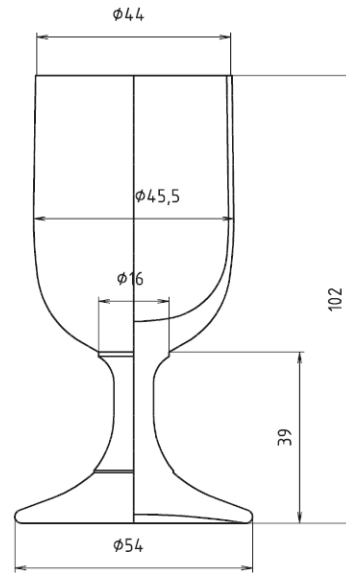


Item Code: SA 1214
Dimensions

Weight:	0.155kg
Height	137mm
Width	59mm top/60mm bottom
Volume	200 ml

The size of the glass is critical.

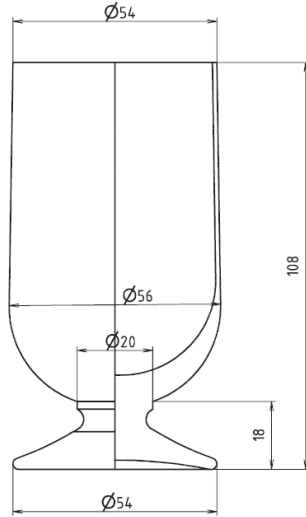
ITEM 4 - Product Name: Premium Class Liqueur Glass



Item Code: SA 1216 Dimensions

Weight:	0.080kg
Height	55mm
Width	44mm top/ 54mm bottom
Volume	75ml
The size of the glass is critical	

ITEM 5 - Product Name: Business Class Wine Glass

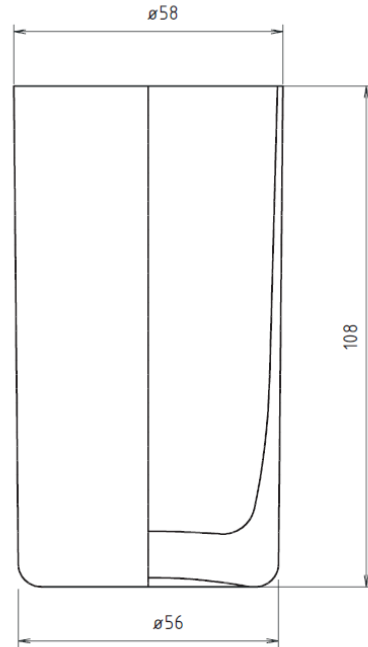


Item Code: SA 1189
Dimensions

Weight:	0.12 kg
Height	108mm
Width	54mm top/56 mm bottom
Volume	150ml

The size of the glass is critical.

ITEM 6 - Product Name: Business Class Rummer Glass



Item Code : SA 1193
Dimensions

Weight:	0.210kg
Width	58mm top/56mm bottom
Height	108mm
Volume:	190 ml

The size of the glass is critical.