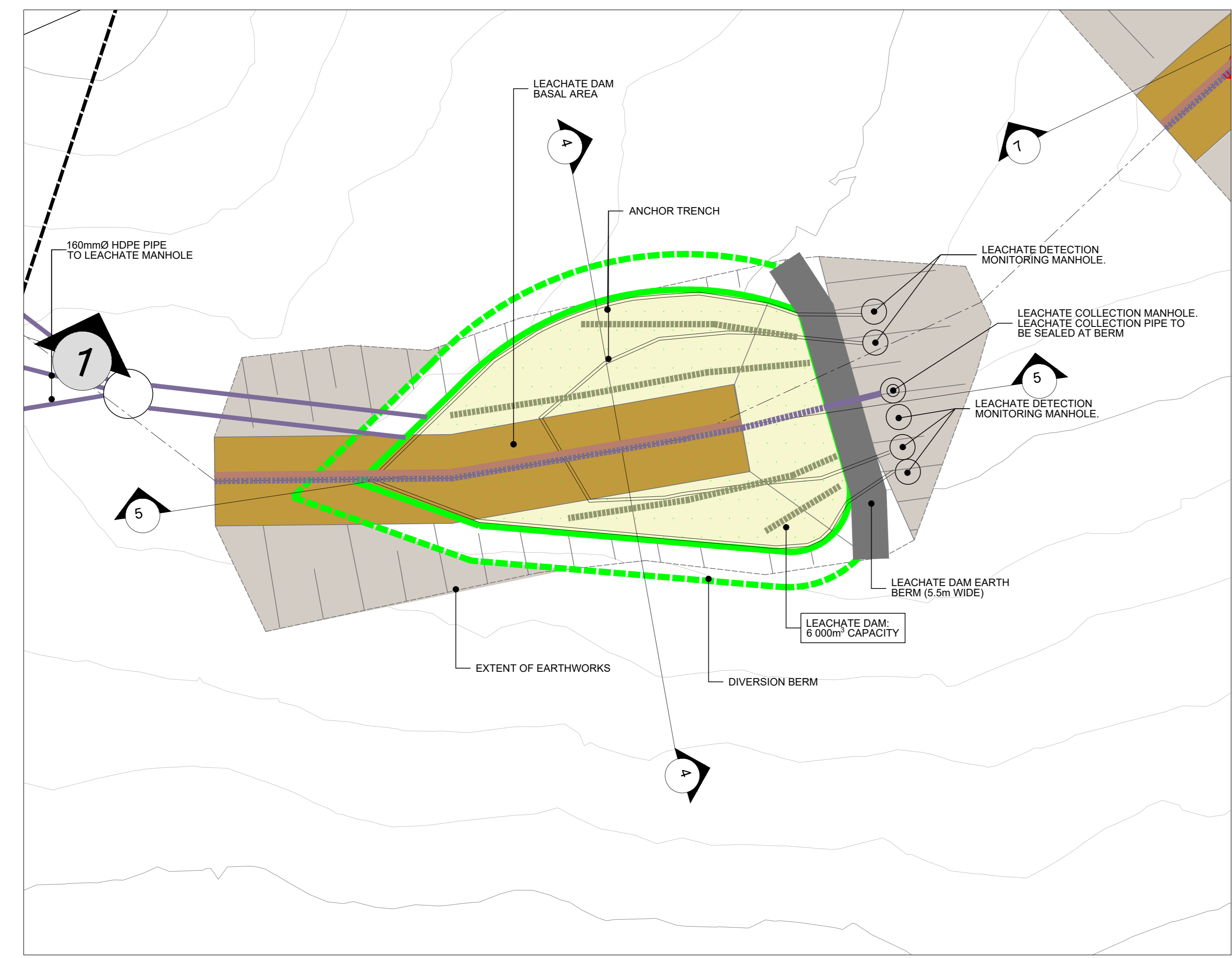
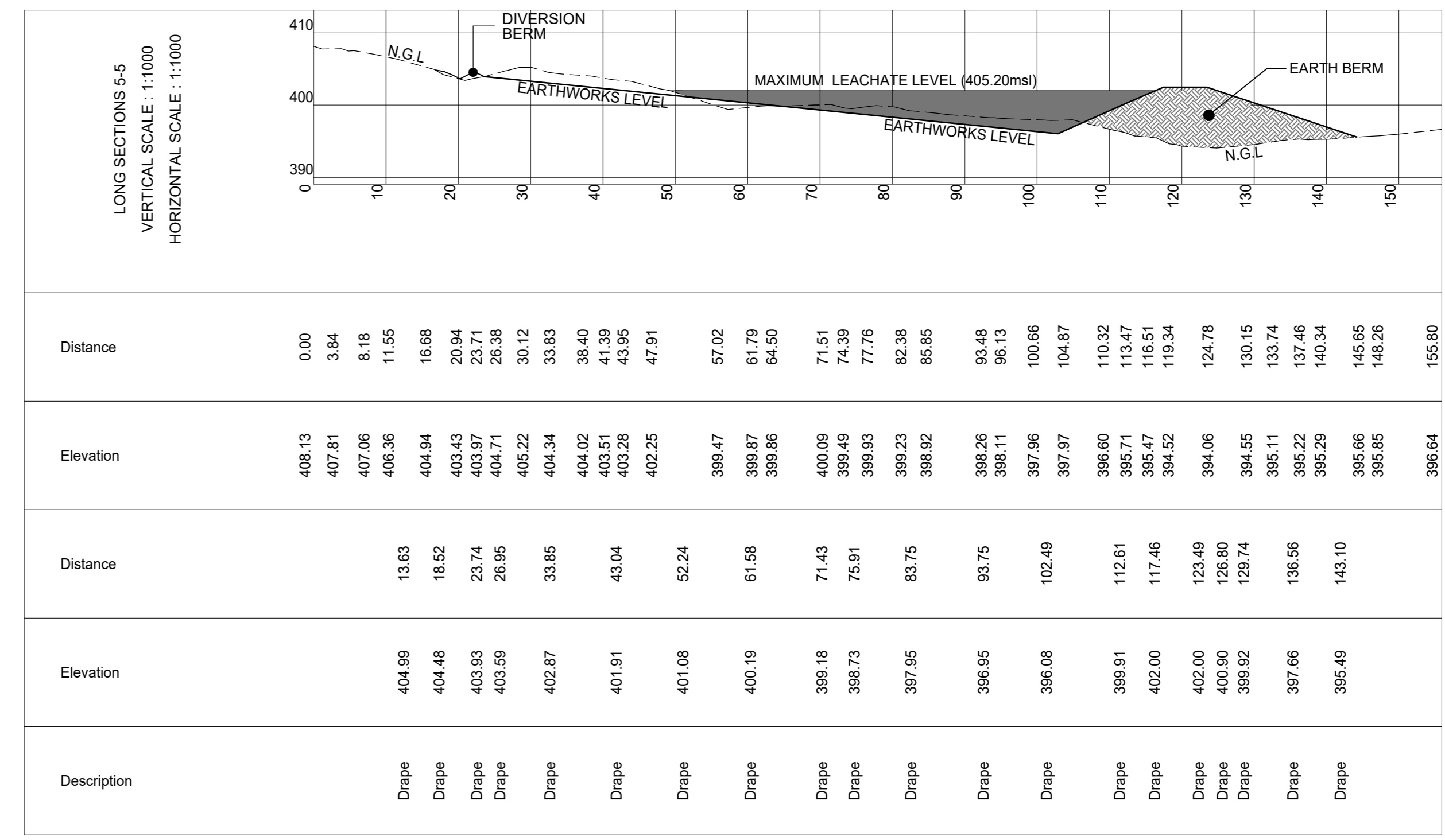


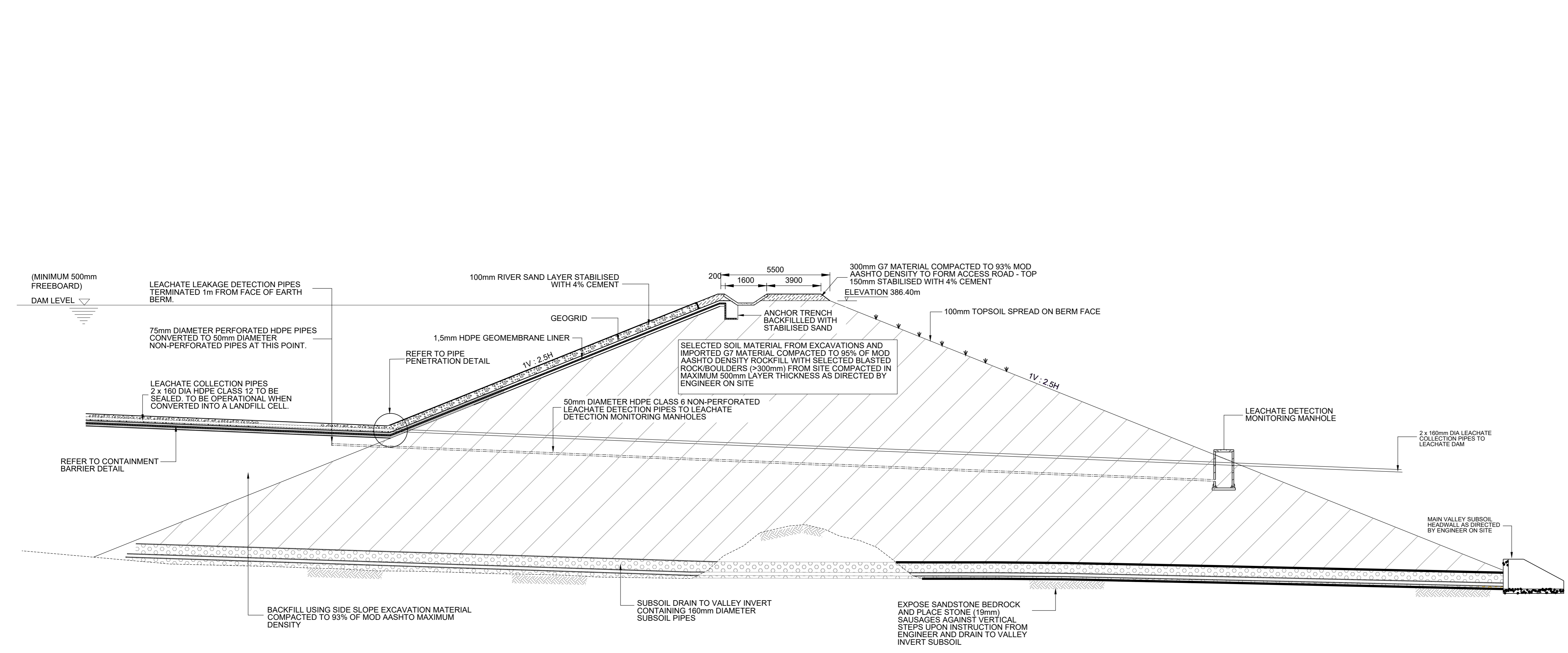
- EARTHWORKS NOTES:**
- 1.1 FINISHED BULK EARTHWORKS SHALL BE SMOOTH AND FREE FROM PROTRUSIONS THAT COULD PUNCTURE THE GEOMEMBRANE LINER. ALL EARTHWORKS SHALL BE APPROVED BY THE ENGINEER BEFORE ANY GEOSYNTHETICS ARE LAID.
 - 1.2 BASE PREPARATION SHALL INCLUDE SCARIFYING AND COMPACTING IN-SITU MATERIAL TO 93% OF MOD - AASHTO MAXIMUM DENSITY.
 - 1.3 UNLESS OTHERWISE SPECIFIED ELSEWHERE, ALL EMBANKMENT FILL MATERIAL SHALL BE SOIL MATERIAL CLASSIFYING AS G9 COMPACTED TO 93% OF MOD - AASHTO MAXIMUM DENSITY IN LAYERS NOT EXCEEDING 150mm THICK.
 - 1.4 ALL TYPE 2 GEOSYNTHETICS ANCHOR TRENCHES SHALL BE BACKFILLED AS SHOWN.
 - 1.5 ALL PROTECTION LAYERS ON TOP OF BERMS AND IN DRAINS SHALL BE STABILISED SAND.
- GEOSYNTHETICS NOTES:**
- 2.1 THE GEOMEMBRANE TO BE CLEAN AND DRY BEFORE SEAMING COMMENCES.
 - 2.2 TRIAL SEAM TO BE DONE BEFORE THE MAJOR WORKS COMMENCE TO CHECK THE CALIBRATION OF THE EQUIPMENT.



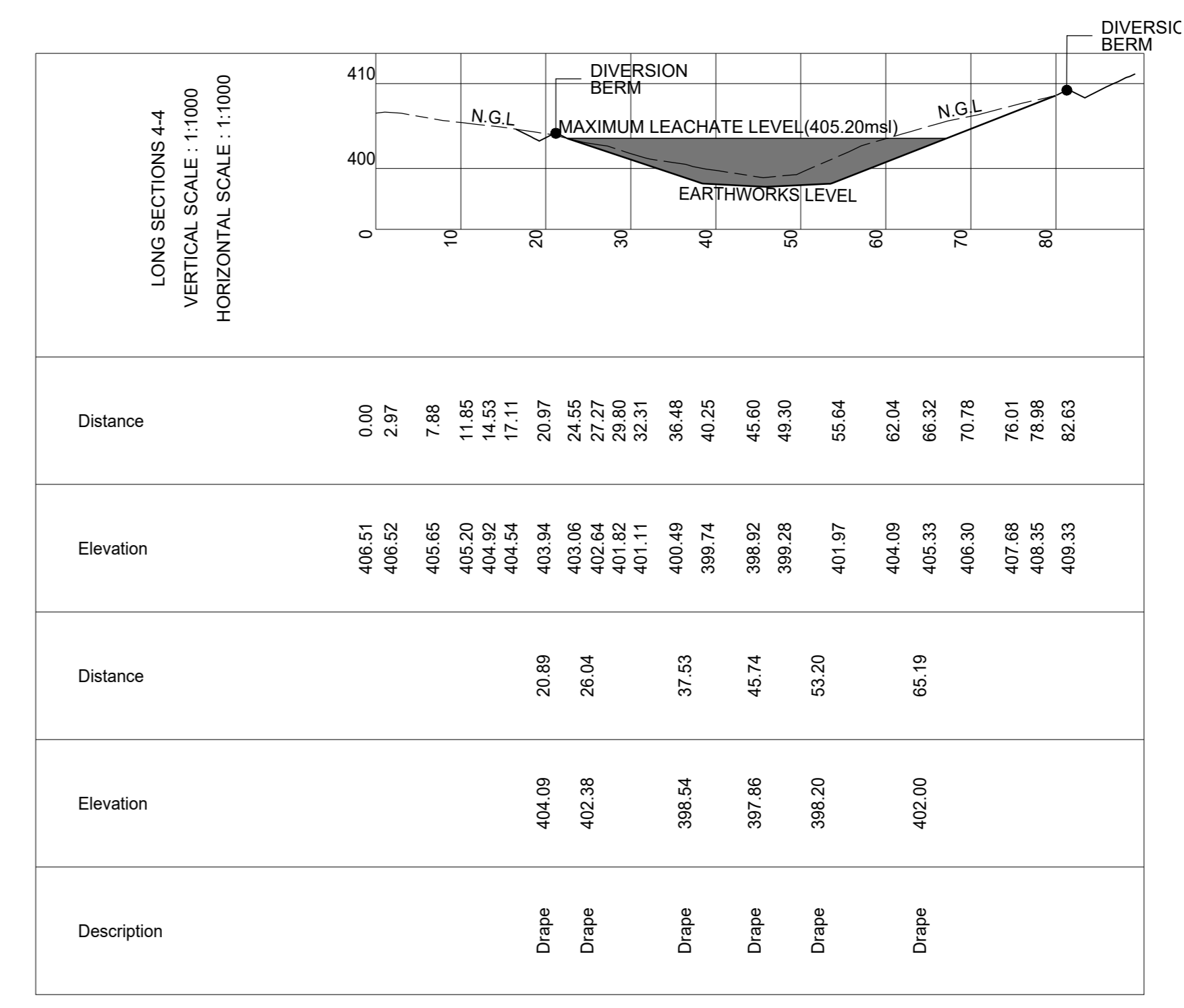
PROPOSED LEACHATE DAM LAYOUT
SCALE 1:500



LONG SECTION 5-5



LEACHATE DAM: TYPICAL EARTH BERM AND PIPEWORK DETAILS
FOR PIPE, MANHOLE AND HEADWALL CONFIGURATION AND LAYOUT, REFER TO TYPICAL DETAILS DRAWINGS NOT TO SCALE



LONG SECTION 4-4

Design Consultants
iX / Wilson & Pass Inc JV
iX engineers
Wilson & Pass Inc

Revision	Date	Description
B	27/10/2023	FOR TENDER ONLY
A	03/06/2023	FOR APPROVAL

Service	Date	Signature
S.W. DRAINS		
SEWERS		
WATER MAINS		
CLP/D CABLES		
ELECTRIC CABLES		
S.A.R. CABLES		
E.S.C. CABLES		
CAL PIPE LINE		

Contract No. **6W-30109**
Status **FOR TENDER**
Project Title **WWMF Contract B - Landfill Cell 1, Lined Dams and Platforms Construction**

Scale	Reference
AS SHOWN	
Designed	Date
N. DOOKHUIJ, PASS	06/03/2023
Checked	Drawn by
M. RICHMOND	L. DU PLESSIS
Drawing No	Revision
301837-02-WS-LA-001-004	B