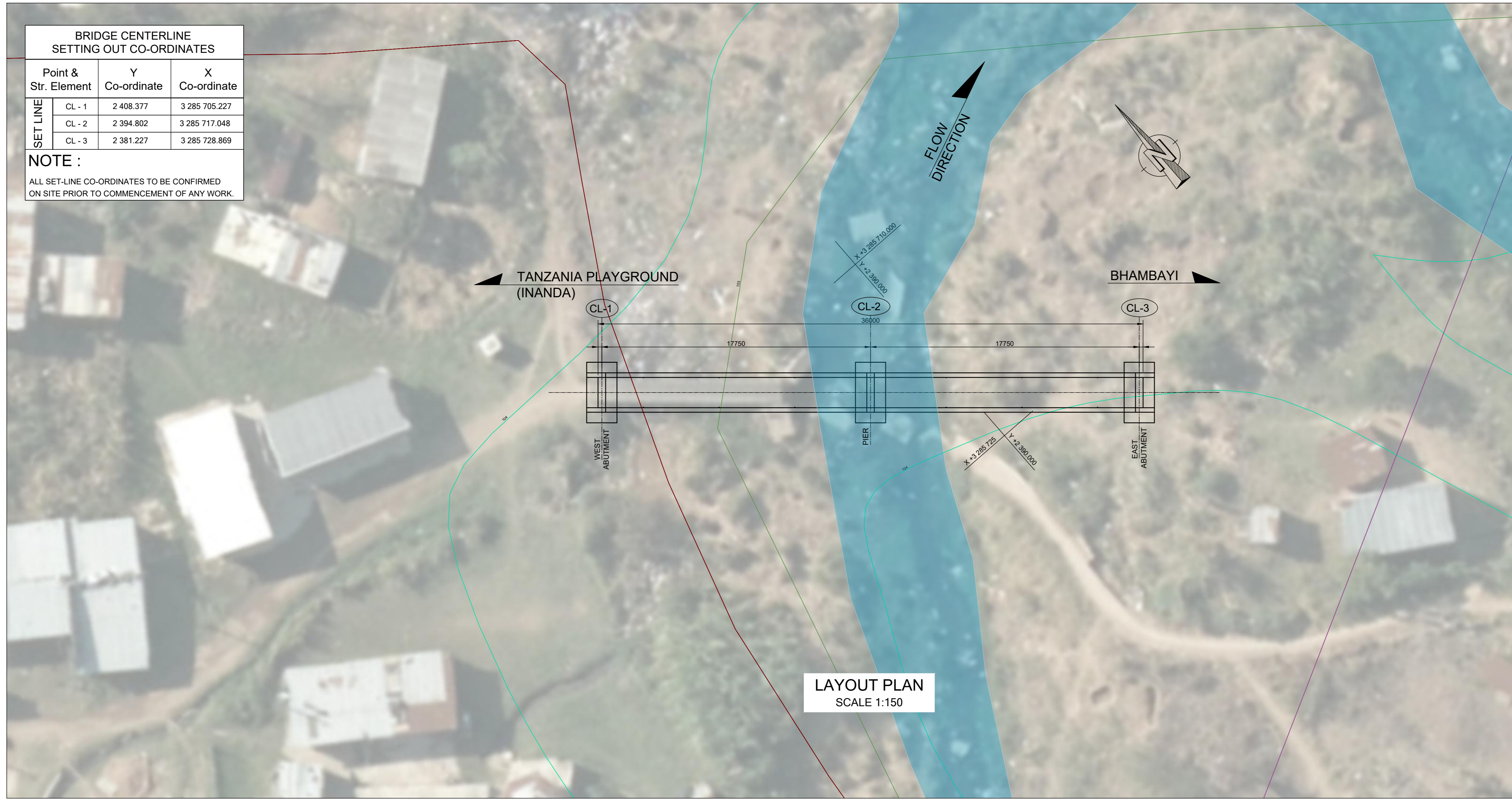
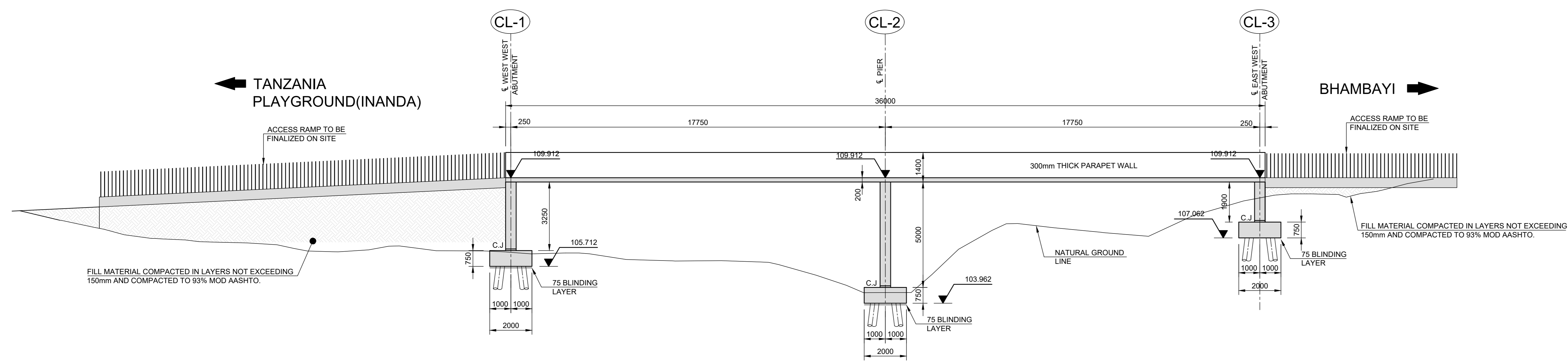
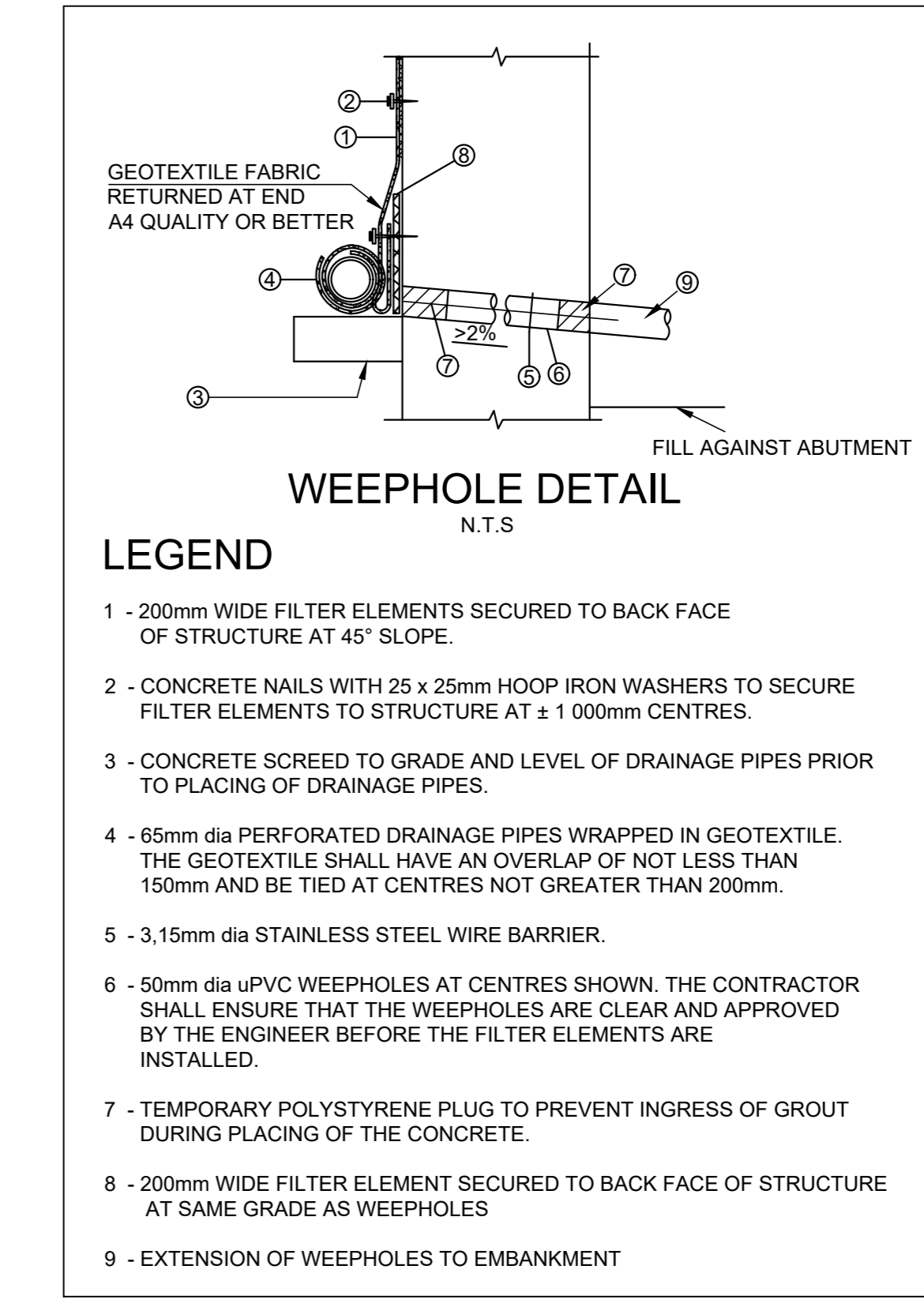
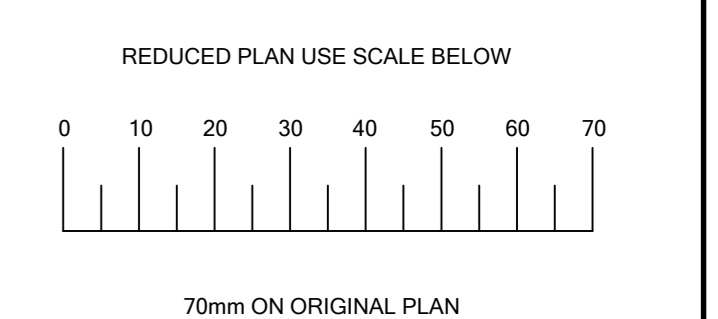


ALL DIMENSIONS TO BE CHECKED ON SITE PRIOR TO THE COMMENCEMENT OF ANY WORK.
 ANY DISCREPANCIES TO BE REPORTED TO THE ENGINEER IMMEDIATELY.
 THIS DRAWING IS TO BE READ IN CONJUNCTION WITH ALL RELATED STRUCTURAL DRAWINGS.



NOTES:

- GENERAL BRIDGE NOTES**
 DESCRIPTION - THE BRIDGE IS A SINGLE SPAN CONVENTIONALLY REINFORCED CONCRETE U-BEAM INTEGRAL WITH ABUTMENTS.
 DESIGN METHOD - LIMIT STATE
 DESIGN CODE - TMH7 PART 3
- MATERIAL STRENGTHS & STRESSES**

CONCRETE:	CLASS(MPa/mm)
BLINDING	- 15/19
PILING	- 30/19
FOUNDATIONS	- 30/19
ABUTMENTS & PIERS	- 30/19
DECK	- 30/19

REINFORCEMENT:	
MILD STEEL	- 250 MPa
HIGH-YIELD-STRESS STEEL	- 450 MPa
- SUBSTRUCTURE**
 a) FOUNDATIONS
 FOUNDING DEPTHS TO BE DETERMINED ON SITE. FOUNDATIONS ARE TO BE SECURED WITH 4000 CFA PILES. ALL WORK TO BE IN ACCORDANCE TO ENGINEERS SPECIFICATION AND APPROVAL.
 b) CONCRETE COVER
 CAST AGAINST EARTH - 40mm
 FOUNDATIONS (SHUTTERED) - 40mm
 FOUNDATIONS (UNDERNEATH) - 75mm
 EXPOSED SURFACES - 40mm
 c) CHAMFERS TO ALL EXPOSED SHARP CORNERS 25 x 25mm

V1	20/04/2026	FOR TENDER PURPOSES
Revision	Date	Description
		NOTE: No construction work to commence until land and servitude acquisitions have been completed.
Acquisitions completed:		
Date	Engineer	
UNDERGROUND SERVICES CHECKED		
SERVICE	DATE	SIGNATURE
S.VV DRAINS		
SEWERS		
WATER MAINS		
G.P.O CABLES		
ELECTRIC CABLES		
T.A.R. CABLES		
E.S.C. CABLES		
OIL PIPE LINE		
NOTE: Only underground services affected by new construction work are shown. Care must be taken during excavations for road foundations, trenches etc. to avoid damage to underground services such as sewers, mains, cables, water mains and connections. Wherever possible these must be located before work proceeds.		
Contract No.	1R - 35357	
Project Title	CONSTRUCTION OF 36m RC PEDESTRIAN BRIDGE IN ZAMBIA AREA, AMAOTI WARD 57	
Drawing Title	GENERAL ARRANGEMENT	
Scales:	AS SHOWN	Date: 20/04/2026
Designed:	M. GUMEDE	Checked:
Drawn:	N. MNENGELA	Surveyed:
Manager:	Structures P.G. Fenton	
Deputy Director:	Roads Provision S. Masondo	
T. ZULU	ACTING DIRECTOR:RIM	
Drawing No.	-----	Sheet of Rev. V1

FOR TENDER