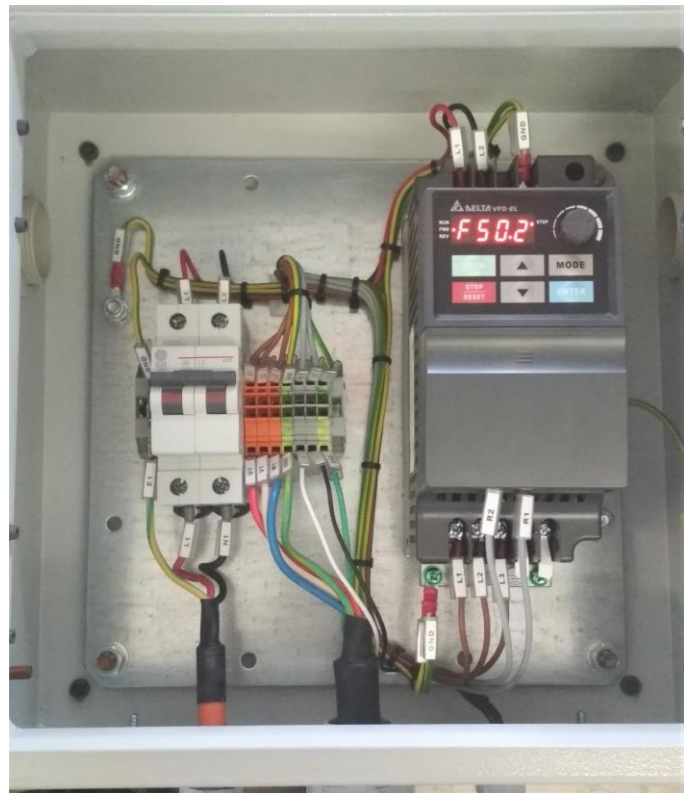


A3



NOTES:

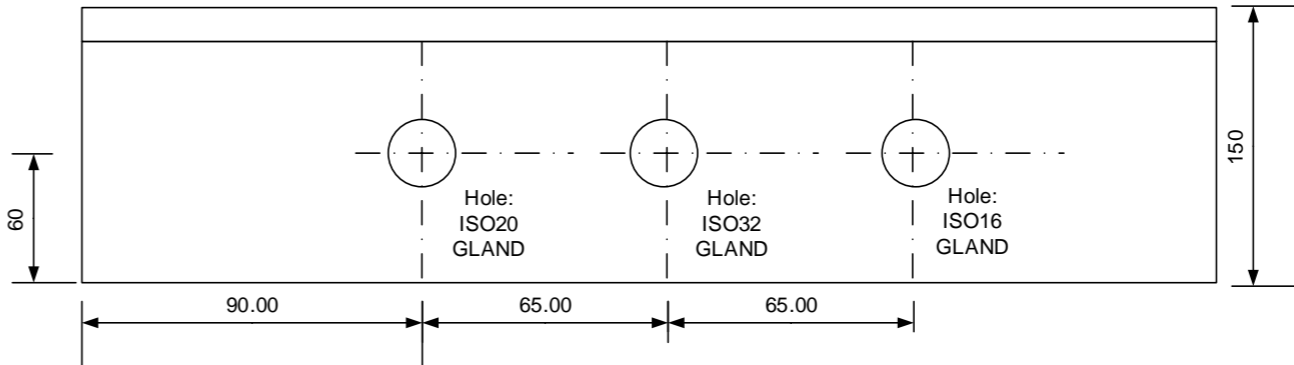
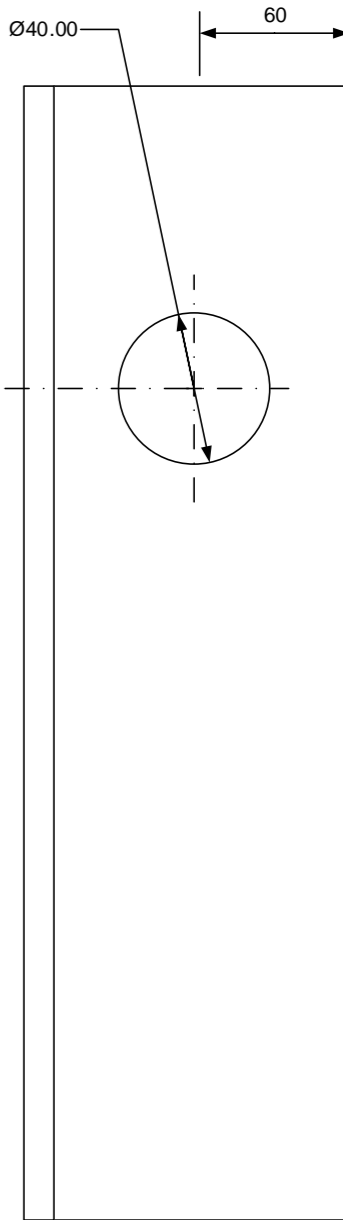
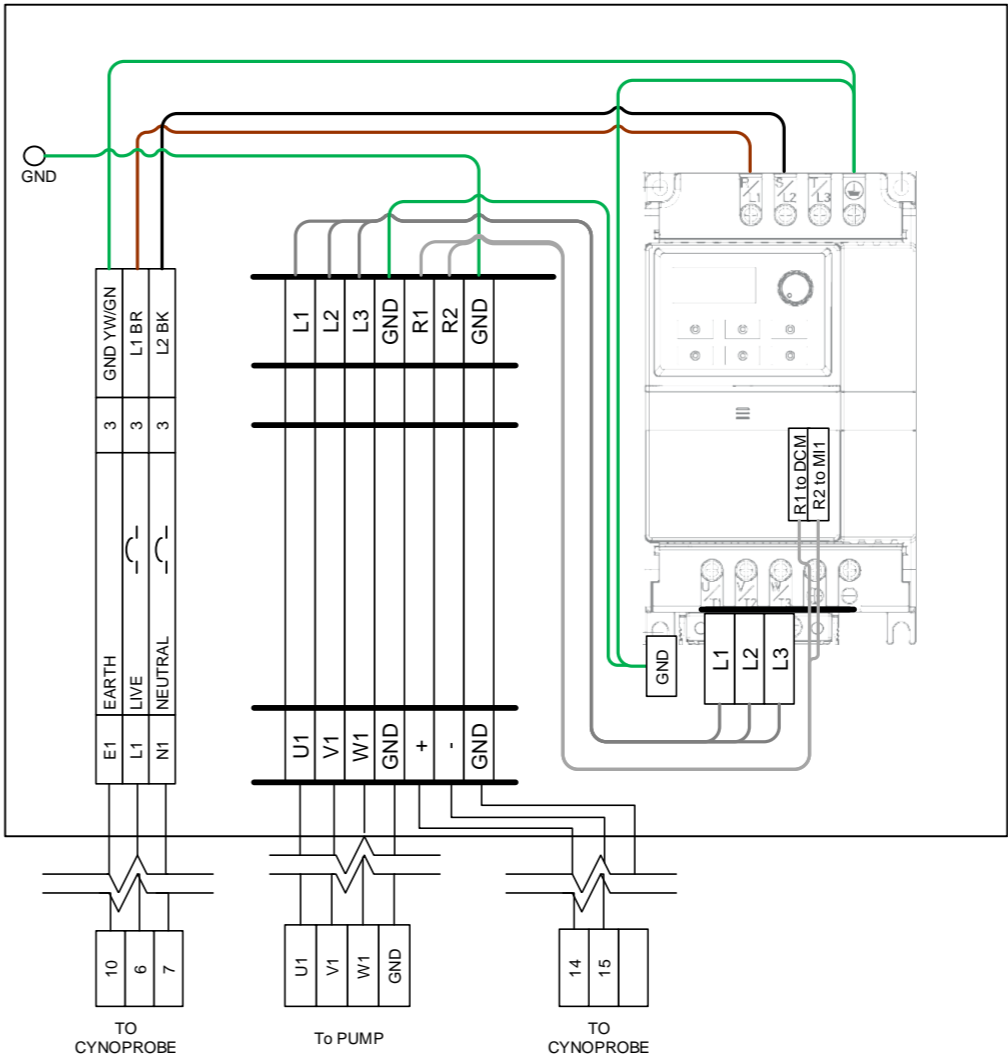
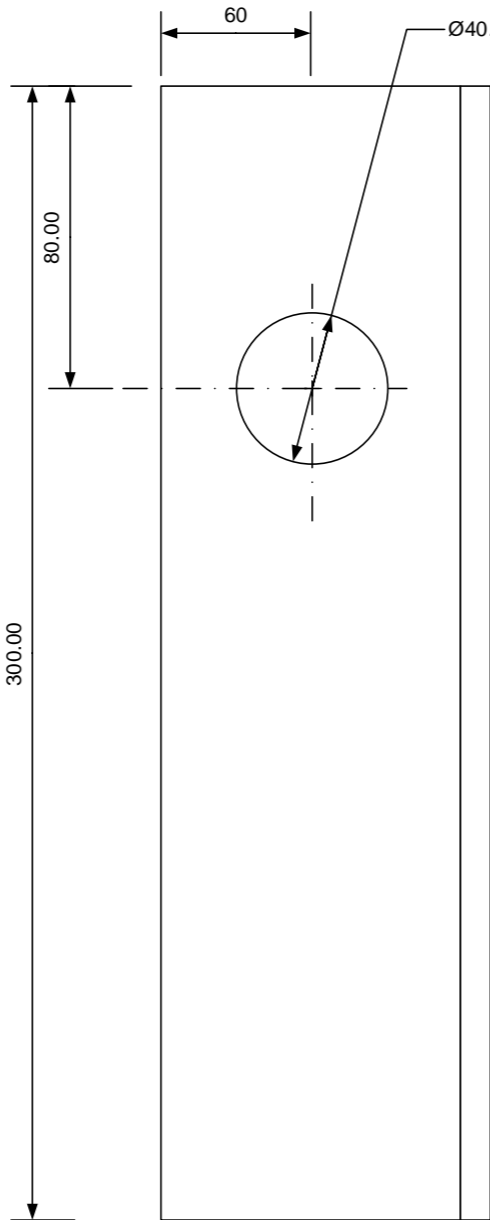
- 1. ROUNDED EDGES (NOT SHARP)
- 3. CYNOPROBE WIRE: 1.5M, 60MM STRIPPED FROM BOTH ENDS, FERRULES ON ALL ENDS.
- 4. DIN RAIL 135MM ALUMINIUM
- 5. NOT TO SCALE

Parts List:

1. Box – Galvanised steel, epoxy coated – recommended sizes in drawing

2. VSD (one of the following – on order)  
ABB: ACS55-01E-02A2-1  
ABB: ACS55-01E-02A2-2

3. Breaker (32A)  
(terminals, wiring, glands by supplier)



4			
3			
2			
1			
0	ISSUED FOR APPROVAL & COMMENTS	2020/02/09	NA
REV	DESCRIPTION	DATE	BY
REVISIONS			

THIS DRAWING IS CONFIDENTIAL AND IS THE PROPERTY OF MINTEK. IT MAY NOT BE USED IN THE MANUFACTURE, DESIGN OR INSTALLATION WITHOUT THE WRITTEN PERMISSION OF MINTEK.

VSD BOX - CYNOPROBE V3.5



**MINTEK**

PRIVATE BAG X3015 RANDBURG 2125  
GAUTENG SOUTH AFRICA +27 11 709 4111

SIZE	FSCM NO	DWG NO	REV
SCALE	1:1	MAC-CYNV3-E-VSD Box-R1	1
SHEET		1 OF 1	