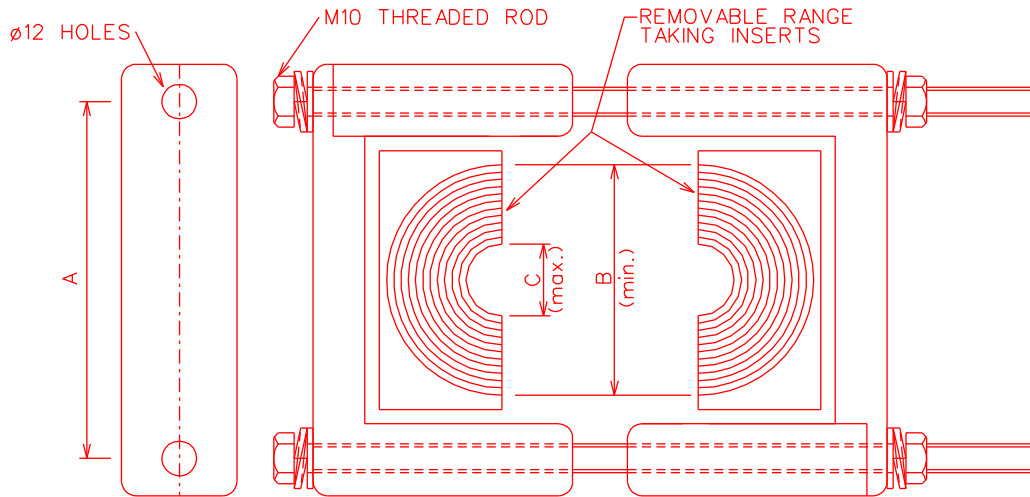


TOP VIEW



SIDE VIEW


FRONT VIEW

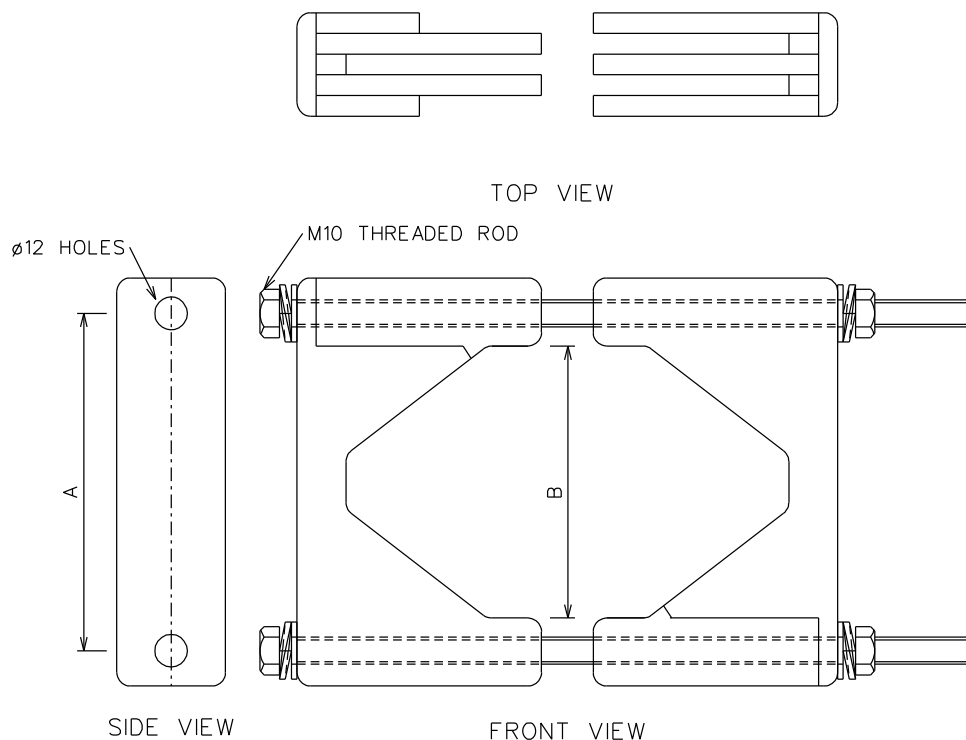
CLAMP RANGE mm	A	B	C
25-55	70 - 110	55	24

SAP MATERIAL No.:	0256030
SHORT DESCRIPTION:	CLAMP,CABLE 25-55 DIA POLYPROP BLK D8019


TECH. DESCRIPTION:

CABLE CLAMP \* MATERIAL : POLYPROPYLENE \* COLOUR : BLACK \*  
 FABRICATED IN TWO SECTIONS TO FIT 25-55mm DIA. CABLE \*  
 FITTED WITH REMOVABLE EPDM RUBBER RANGE-TAKING (PEELABLE) INSERTS \*  
 BOLTED TOGETHER \*  
 COMPLETE WITH STAINLESS STEEL :  
 2 x THREADED RODS M10 x 220mm LONG,  
 4 x M10 FLAT ROUND WASHERS,  
 2 x HEXAGON NUTS AND 4 x SPRING WASHERS \*  
 CLAMP TO BE UV STABLE, FIRE AND OIL RESISTANT \*  
 ESKOM DRAWING No. D-DT-8019 \*


5	SAP 0186889 MOVED TO SHEET 4 AND 25-50 SINGLE CABLE CLAMP ADDED			P.A.T.	B. MWAREHWA	R. KELLY	30.05.2011	
4	SHORT DESCRIPTIONS CORRECTED			N.M.	P.A.T.	P.A.T.	04.02.2009	
3	LOGO CHANGED AS PER NEW CORPORATE ID			PBM	P.A.V.	P.A.V.	12.11.04	
2	50-75 DOUBLE CABLE CLAMP ADDED			P.A.V.	G.WHYTE	A. BEKKER	25.03.02	
REV	REVISION DESCRIPTION			BY	CHKD	AUTH	DATE	REF. DWGS
AUTH:	P. CROWDY	DATE:	03.12.1999	SCALE NTS		 <b>D-DT-8019</b>	SAP No:	
CHKD:	G. WHYTE	DATE:	03.12.1999	CAD REF:			0256030	
				SERIES 8000				
DRAWN:	P. A. VERMAAK	DATE:	06.10.1999	FILE No:			SET	SHEET
				8019		5	1	5

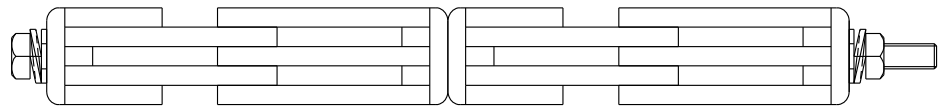


CLAMP	A	B
50-75	90 - 130	75
75-100	110 - 150	100

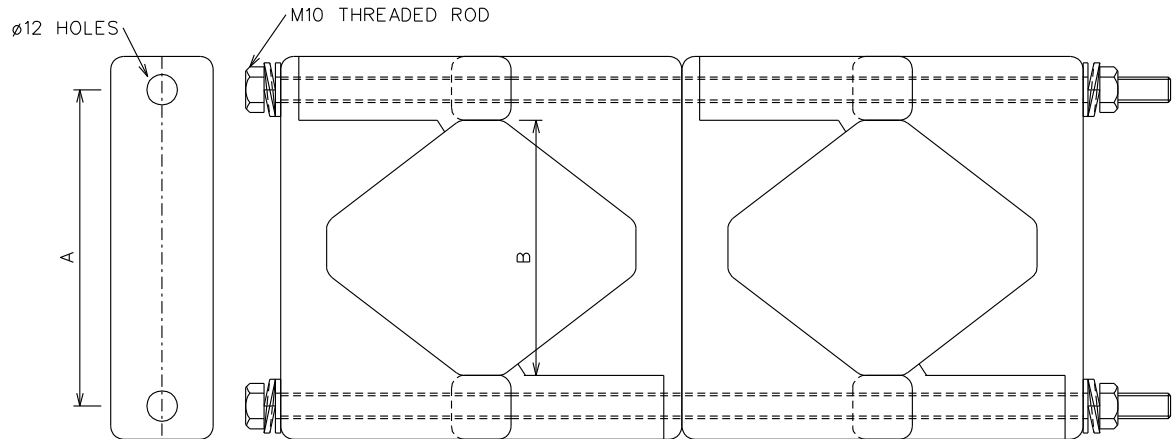
ITEM		:- CLAMP,CABLE POLYPROPYLENE BLACK						
MATERIAL SPECIFICATION		:-						
CORROSION SPECIFICATION		:-						
STANDARD SPECIFICATION		:-						
ESKOM SPECIFICATION		:- D-DT-8019						
TEST & CERTIFICATION REQUIREMENTS :-								
INSPECTION		Yes	No	ESKOM RELEASE NOTE		Yes	No	
IDENTIFICATION:- INDELIBLE MANUFACTURES TRADEMARK & PART No. ON ALL ITEMS								
5	SAP 0186889 MOVED TO SHEET 4 AND 25-50 SINGLE CABLE CLAMP ADDED			P.A.T.	B. MWAREHWA	R. KELLY	30.05.2011	
4	SHORT DESCRIPTIONS CORRECTED			N.M.	P.A.T.	P.A.T.	04.02.2009	
3	LOGO CHANGED AS PER NEW CORPORATE ID			PBM	P.A.V.	P.A.V.	12.11.04	
2	50-75 DOUBLE CABLE CLAMP ADDED			P.A.V.	G.WHYTE	A. BEKKER	25.03.02	
REV	REVISION DESCRIPTION			BY	CHKD	AUTH	DATE	
AUTH:		P. CROWDY	DATE:	03.12.1999	 <b>D-DT-8019</b>		SAP No:	
CHKD:		G. WHYTE	DATE:	03.12.1999			0175928	
							0175929	
							SET	SHEET
DRAWN:		P. A. VERMAAK	DATE:	06.10.1999			5	2
								5

## SPEC SHEET

SAP MATERIAL No.:		0175928								
SHORT DESCRIPTION:		CLAMP,CABLE 50-75 DIA POLYPROP BLK D8019								
TECH. DESCRIPTION:										
CABLE CLAMP * MATERIAL : POLYPROPYLENE * COLOUR : BLACK * FABRICATED IN TWO SECTIONS TO FIT 50-75mm DIA. CABLE * BOLTED TOGETHER * COMPLETE WITH STAINLESS STEEL : 2 x THREADED RODS M10 x 220mm LONG, 4 x M10 FLAT ROUND WASHERS, 2 x HEXAGON NUTS AND 4 x SPRING WASHERS * CLAMP TO BE UV STABLE, FIRE AND OIL RESISTANT * ESKOM DRAWING No. D-DT-8019 *										
SAP MATERIAL No.:		0175929								
SHORT DESCRIPTION:		CLAMP,CABLE 75-100 DIA POLYPROP BLK D8019								
TECH. DESCRIPTION:										
CABLE CLAMP * MATERIAL : POLYPROPYLENE * COLOUR : BLACK * FABRICATED IN TWO SECTIONS TO FIT 75-100mm DIA. CABLE * BOLTED TOGETHER * COMPLETE WITH STAINLESS STEEL : 2 x THREADED RODS M10 x 220mm LONG, 4 x M10 FLAT ROUND WASHERS, 2 x HEXAGON NUTS AND 4 x SPRING WASHERS * CLAMP TO BE UV STABLE, FIRE AND OIL RESISTANT * ESKOM DRAWING No. D-DT-8019 *										
5	SAP 0186889 MOVED TO SHEET 4 AND 25-50 SINGLE CABLE CLAMP ADDED			P.A.T.	B. MWAREHWA	R. KELLY	30.05.2011			
4	SHORT DESCRIPTIONS CORRECTED			N.M.	P.A.T.	P.A.T.	04.02.2009			
3	LOGO CHANGED AS PER NEW CORPORATE ID			PBM	P.A.V.	P.A.V.	12.11.04			
2	50-75 DOUBLE CABLE CLAMP ADDED			P.A.V.	G.WHYTE	A. BEKKER	25.03.02			
REV	REVISION DESCRIPTION			BY	CHKD	AUTH	DATE	REF. DWGS		
AUTH:	P. CROWDY	DATE:	03.12.1999	SCALE NTS				SAP No:		
CHKD:	G. WHYTE	DATE:	03.12.1999	CAD REF:				0175928		
				SERIES 8000				SET	SHEET	REV
DRAWN:	P. A. VERMAAK	DATE:	06.10.1999	FILE No: 8019		D-DT-8019		5	3	5



TOP VIEW




SIDE VIEW

FRONT VIEW


CLAMP	A	B
50-75	90 - 130	75
75-100	110 - 150	100

SAP MATERIAL No.:	0187691
SHORT DESCRIPTION:	CLAMP CABLE DBL 50-75 P/PROP BLK D8019

TECH. DESCRIPTION:  
 DOUBLE CABLE CLAMP \* MATERIAL : POLYPROPYLENE \* COLOUR : BLACK \*  
 FABRICATED IN TWO SECTIONS TO FIT 50-75mm DIA. CABLE \*  
 BOLTED TOGETHER \*  
 COMPLETE WITH STAINLESS STEEL :  
 2 x THREADED RODS M10 x 380mm LONG,  
 4 x M10 FLAT ROUND WASHERS,  
 2 x HEXAGON NUTS AND 4 x SPRING WASHERS \*  
**CLAMP TO BE UV STABLE, FIRE AND OIL RESISTANT \***  
 ESKOM DRAWING No. D-DT-8019 \* S \*

5	SAP 0186889 MOVED TO SHEET 4 AND 25-50 SINGLE CABLE CLAMP ADDED			P.A.T.	B. MWAREHWA	R. KELLY	30.05.2011		
4	SHORT DESCRIPTIONS CORRECTED			N.M.	P.A.T.	P.A.T.	04.02.2009		
3	LOGO CHANGED AS PER NEW CORPORATE ID			PBM	P.A.V.	P.A.V.	12.11.04		
2	50-75 DOUBLE CABLE CLAMP ADDED			P.A.V.	G.WHYTE	A. BEKKER	25.03.02		
REV	REVISION DESCRIPTION			BY	CHKD	AUTH	DATE	REF. DWGS	
AUTH:	P. CROWDY	DATE:	03.12.1999	SCALE NTS	 <b>D-DT-8019</b>		SAP No:		
CHKD:	G. WHYTE	DATE:	03.12.1999	CAD REF:			0187691		
				SERIES 8000			SET	SHEET	REV
DRAWN:	P. A. VERMAAK	DATE:	06.10.1999	FILE No: 8019			5	4	5

## SPEC SHEET

SAP MATERIAL No.:	0186889								
SHORT DESCRIPTION:	CLAMP,CABLE DBL 75-100 P/PROP BLK D8019								
TECH. DESCRIPTION:									
<p>DOUBLE CABLE CLAMP * MATERIAL : POLYPROPYLENE * COLOUR : BLACK *</p> <p>FABRICATED IN TWO SECTIONS TO FIT 75-100mm DIA. CABLE *</p> <p>BOLTED TOGETHER *</p> <p>COMPLETE WITH STAINLESS STEEL :</p> <p>2 x THREADED RODS M10 x 380mm LONG,</p> <p>4 x M10 FLAT ROUND WASHERS,</p> <p>2 x HEXAGON NUTS AND 4 x SPRING WASHERS *</p> <p><b>CLAMP TO BE UV STABLE, FIRE AND OIL RESISTANT *</b></p> <p>ESKOM DRAWING No. D-DT-8019 * S *</p>									
5	SAP 0186889 MOVED TO SHEET 4 AND 25-50 SINGLE CABLE CLAMP ADDED			P.A.T.	B. MWAREHWA	R. KELLY	30.05.2011		
4	SHORT DESCRIPTIONS CORRECTED			N.M.	P.A.T.	P.A.T.	04.02.2009		
3	LOGO CHANGED AS PER NEW CORPORATE ID			PBM	P.A.V.	P.A.V.	12.11.04		
2	50-75 DOUBLE CABLE CLAMP ADDED			P.A.V.	G.WHYTE	A. BEKKER	25.03.02		
REV	REVISION DESCRIPTION			BY	CHKD	AUTH	DATE	REF. DWGS	
AUTH:	P. CROWDY	DATE:	03.12.1999	SCALE			SAP No:		
CHKD:	G. WHYTE	DATE:	03.12.1999	NTS			0186889		
				CAD REF:					
				SERIES 8000	<b>D-DT-8019</b>		SET	SHEET	REV
				FILE No:					
DRAWN:	P. A. VERMAAK	DATE:	06.10.1999	8019			<b>5</b>	<b>5</b>	<b>5</b>